



DRILL STEM TEST REPORT

Prepared For: **F.G.Holl Company L.L.C.**

9431 East Central Suite 100
Wichita ,Kansas 67206-2563

ATTN: Rene Husted

G.B.F #1-12

12-19s-14w Barton

Start Date: 2015.05.08 @ 08:50:00

End Date: 2015.05.08 @ 12:58:00

Job Ticket #: 01036 DST #: 6

Eagle Testers
1309 Patton Road Great Bend, Kansas 67530
620-791-7394

Printed: 2015.05.08 @ 14:10:26



DRILL STEM TEST REPORT

F.G.Holl Company L.L.C.

12-19s-14w Barton

9431 East Central Suite 100
Wichita ,Kansas 67206-2563

G.B.F #1-12

Job Ticket: 01036

DST#: 6

ATTN: Rene Husted

Test Start: 2015.05.08 @ 08:50:00

GENERAL INFORMATION:

Formation: **Arbuckle**

Deviated: No Whipstock: ft (KB)

Time Tool Opened: 10:08:30

Time Test Ended: 12:58:00

Test Type: Conventional Bottom Hole (Initial)

Tester: Gene Budig

Unit No: 1

Interval: **3517.00 ft (KB) To 3535.00 ft (KB) (TVD)**

Reference Elevations: 1886.00 ft (KB)

Total Depth: 3535.00 ft (KB) (TVD)

1878.00 ft (CF)

Hole Diameter: 788.00 inches Hole Condition: Fair

KB to GR/CF: 8.00 ft

Serial #: **9139** Outside

Press@RunDepth: 36.77 psia @ 3530.00 ft (KB)

Capacity: 5000.00 psia

Start Date: 2015.05.08

End Date: 2015.05.08

Last Calib.: 2015.05.08

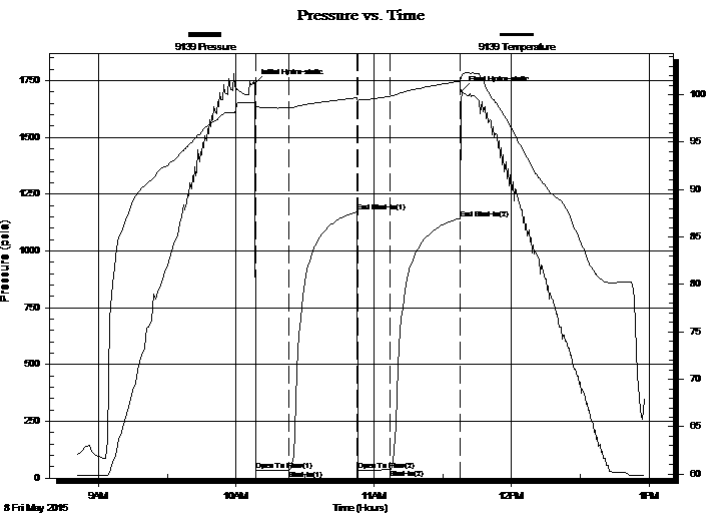
Start Time: 08:50:00

End Time: 12:58:00

Time On Btm: 2015.05.08 @ 10:08:00

Time Off Btm: 2015.05.08 @ 11:38:30

TEST COMMENT: 1st Opening 15 Minutes-very weak surface blow for 7 minutes and died
1st Shut-In 30 Minutes
2nd Opening 15 Minutes noblow
2nd Shut-In 30- Minutes



PRESSURE SUMMARY

Time (Min.)	Pressure (psia)	Temp (deg F)	Annotation
0	1737.12	99.22	Initial Hydro-static
1	32.88	98.73	Open To Flow (1)
15	34.54	98.63	Shut-In(1)
45	1170.81	99.70	End Shut-In(1)
45	34.95	99.23	Open To Flow (2)
59	36.77	99.84	Shut-In(2)
90	1143.56	101.43	End Shut-In(2)
91	1704.10	102.08	Final Hydro-static

Recovery

Length (ft)	Description	Volume (bbl)
5.00	Very slighty oil cut mud	0.07

Gas Rates

Choke (inches)	Pressure (psia)	Gas Rate (Mcf/d)



DRILL STEM TEST REPORT

F.G.Holl Company L.L.C.

12-19s-14w Barton

9431 East Central Suite 100
Wichita ,Kansas 67206-2563

G.B.F #1-12

Job Ticket: 01036

DST#: 6

ATTN: Rene Husted

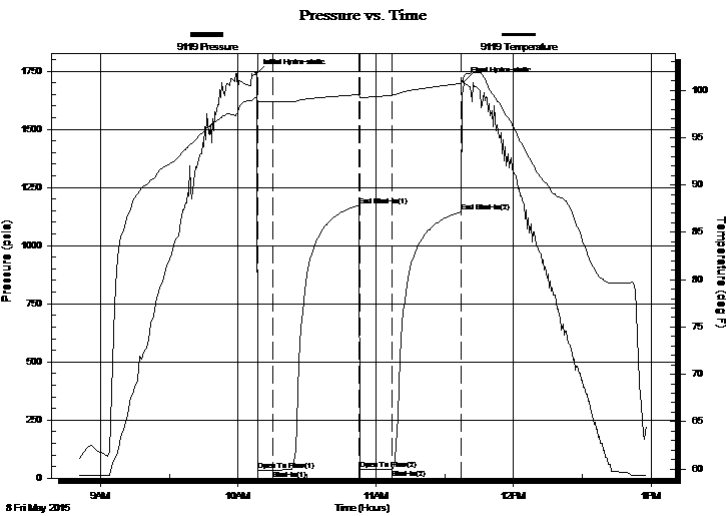
Test Start: 2015.05.08 @ 08:50:00

GENERAL INFORMATION:

Formation: **Arbuckle**
 Deviated: No Whipstock: ft (KB)
 Time Tool Opened: 10:08:30
 Time Test Ended: 12:58:00
 Interval: **3517.00 ft (KB) To 3535.00 ft (KB) (TVD)**
 Total Depth: 3535.00 ft (KB) (TVD)
 Hole Diameter: 788.00 inches Hole Condition: Fair
 Test Type: Conventional Bottom Hole (Initial)
 Tester: Gene Budig
 Unit No: 1
 Reference Elevations: 1886.00 ft (KB)
 1878.00 ft (CF)
 KB to GR/CF: 8.00 ft

Serial #: 9119 Inside
 Press@RunDepth: 1143.70 psia @ 3530.00 ft (KB) Capacity: 5000.00 psia
 Start Date: 2015.05.08 End Date: 2015.05.08 Last Calib.: 2015.05.08
 Start Time: 08:50:00 End Time: 12:58:00 Time On Btm: 2015.05.08 @ 10:08:00
 Time Off Btm: 2015.05.08 @ 11:38:30

TEST COMMENT: 1st Opening 15 Minutes-very weak surface blow for 7 minutes and died
 1st Shut-In 30 Minutes
 2nd Opening 15 Minutes noblow
 2nd Shut-In 30- Minutes



PRESSURE SUMMARY

Time (Min.)	Pressure (psia)	Temp (deg F)	Annotation
0	1740.94	99.25	Initial Hydro-static
1	34.10	98.82	Open To Flow (1)
7	34.96	98.78	Shut-In(1)
45	1172.38	99.55	End Shut-In(1)
45	36.09	99.21	Open To Flow (2)
59	37.90	99.47	Shut-In(2)
89	1143.70	100.71	End Shut-In(2)
91	1704.62	101.54	Final Hydro-static

Recovery

Length (ft)	Description	Volume (bbl)
5.00	Very slighty oil cut muid	0.07

Gas Rates

Choke (inches)	Pressure (psia)	Gas Rate (Mcf/d)



DRILL STEM TEST REPORT

TOOL DIAGRAM

F.G.Holl Company L.L.C.

12-19s-14w Barton

9431 East Central Suite 100
Wichita ,Kamsas 67206-2563

G.B.F #1-12

Job Ticket: 01036

DST#: 6

ATTN: Rene Husted

Test Start: 2015.05.08 @ 08:50:00

Tool Information

Drill Pipe:	Length: 3496.00 ft	Diameter: 3.80 inches	Volume: 49.04 bbl	Tool Weight:	2000.00 lb
Heavy Wt. Pipe:	Length: 0.00 ft	Diameter: inches	Volume: 0.00 bbl	Weight set on Packer:	20000.00 lb
Drill Collar:	Length: 0.00 ft	Diameter: 2.25 inches	Volume: 0.00 bbl	Weight to Pull Loose:	lb
			Total Volume: 49.04 bbl	Tool Chased	0.00 ft
Drill Pipe Above KB:	8.00 ft			String Weight: Initial	61000.00 lb
Depth to Top Packer:	3517.00 ft			Final	61000.00 lb
Depth to Bottom Packer:	ft				
Interval between Packers:	18.00 ft				
Tool Length:	47.00 ft				
Number of Packers:	2	Diameter: 6.75 inches			

Tool Comments:

Tool Description

Tool Description	Length (ft)	Serial No.	Position	Depth (ft)	Accum. Lengths
Shut In Tool	5.00			3493.00	
Hydraulic tool	5.00			3498.00	
Jars	7.00			3505.00	
Safety Joint	2.00		Fluid	3507.00	
Top Packer	5.00			3512.00	
Packer	5.00			3517.00	29.00 Bottom Of Top Packer
Anchor	13.00			3530.00	
Recorder	0.00	9119	Inside	3530.00	
Recorder	0.00	9139	Outside	3530.00	
Bullnose	5.00			3535.00	18.00 Anchor Tool
Total Tool Length:	47.00				



DRILL STEM TEST REPORT

FLUID SUMMARY

F.G.Holl Company L.L.C.

12-19s-14w Barton

9431 East Central Suite 100
Wichita ,Kansas 67206-2563

G.B.F #1-12

Job Ticket: 01036

DST#: 6

ATTN: Rene Husted

Test Start: 2015.05.08 @ 08:50:00

Mud and Cushion Information

Mud Type: Gel Chem
Mud Weight: 9.00 lb/gal
Viscosity: 49.00 sec/qt
Water Loss: 7.20 in³
Resistivity: ohm.m
Salinity: 4400.00 ppm
Filter Cake: 1.00 inches

Cushion Type:
Cushion Length: ft
Cushion Volume: bbl
Gas Cushion Type:
Gas Cushion Pressure: psia

Oil API: deg API
Water Salinity: ppm

Recovery Information

Recovery Table

Length ft	Description	Volume bbl
5.00	Very slightly oil cut mud	0.070

Total Length: 5.00 ft Total Volume: 0.070 bbl

Num Fluid Samples: 0

Num Gas Bombs: 0

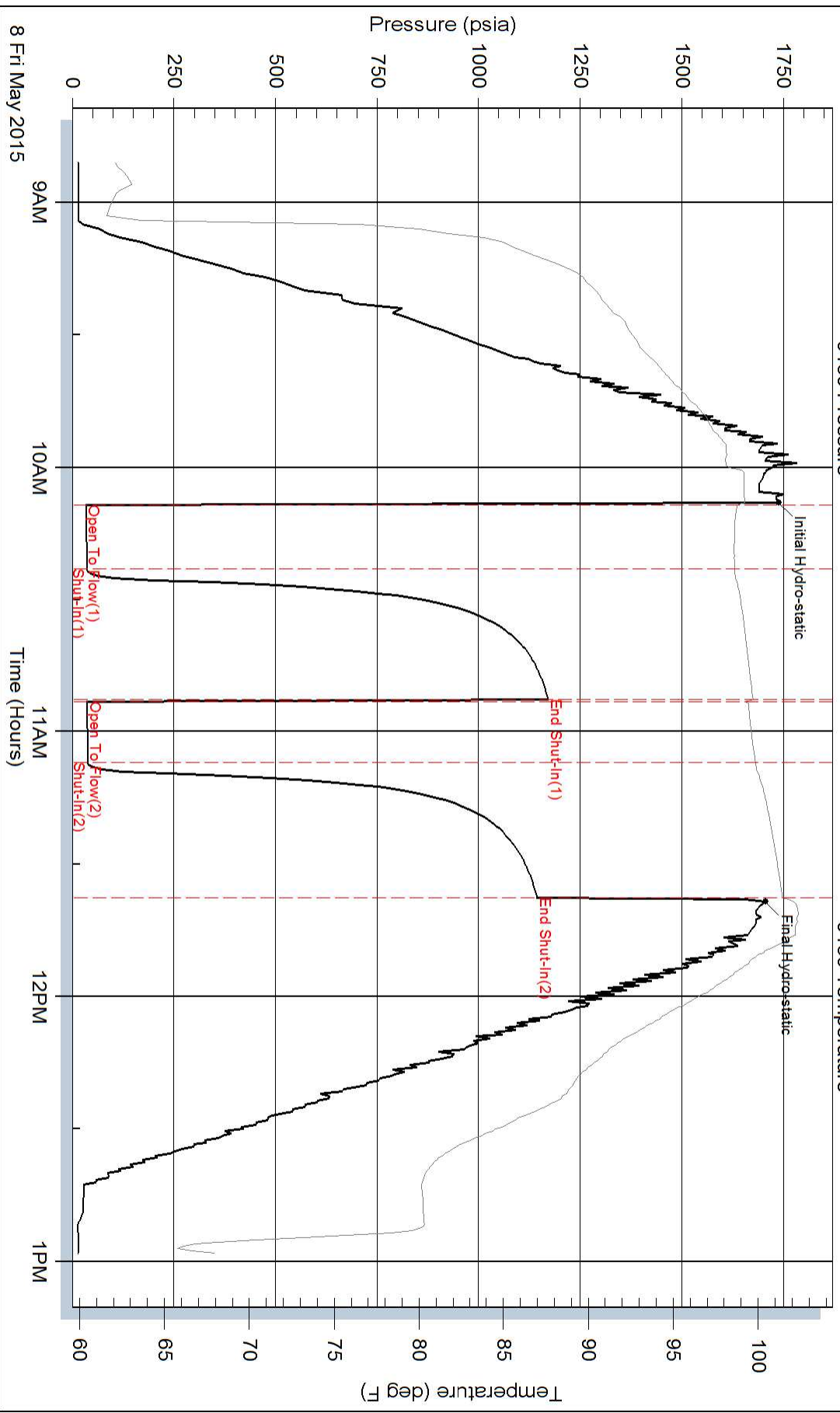
Serial #:

Laboratory Name:

Laboratory Location:

Recovery Comments:

Pressure vs. Time



Pressure vs. Time

