



**TRILOBITE
TESTING, INC**

DRILL STEM TEST REPORT

Vincent Oil Corporation

21-28S-23W Ford

155 N Market Ste 700
Wichita, KS 67202

Malone 5-21

Job Ticket: 59753

DST#: 4

ATTN: Ken LeBlanc

Test Start: 2015.02.16 @ 19:55:46

GENERAL INFORMATION:

Formation: **Mississippi**

Deviated: No Whipstock: ft (KB)

Time Tool Opened: 22:16:31

Time Test Ended: 09:11:46

Test Type: Conventional Bottom Hole (Reset)

Tester: Leal Cason

Unit No: 74

Interval: 5120.00 ft (KB) To 5130.00 ft (KB) (TVD)

Reference Elevations: 2444.00 ft (KB)

Total Depth: 5130.00 ft (KB) (TVD)

2432.00 ft (CF)

Hole Diameter: 7.88 inches Hole Condition: Good

KB to GR/CF: 12.00 ft

Serial #: 6798

Inside

Press@RunDepth: 117.88 psig @ 5121.00 ft (KB)

Capacity: 8000.00 psig

Start Date: 2015.02.16

End Date:

2015.02.17

Last Calib.:

2015.02.17

Start Time: 19:55:47

End Time:

09:11:46

Time On Btm:

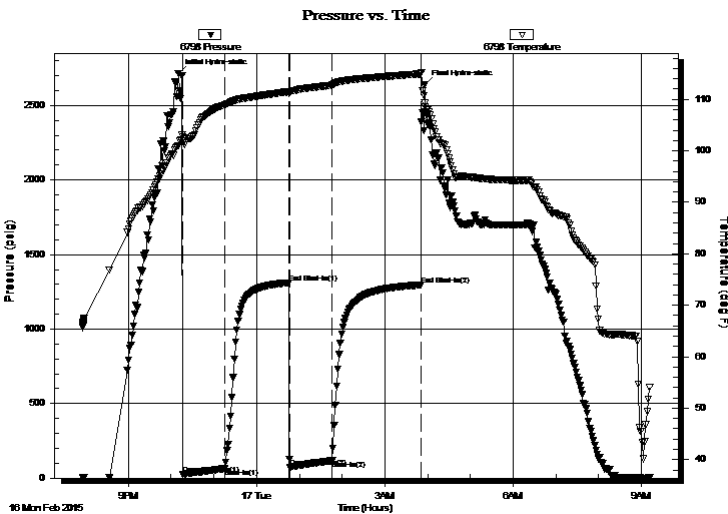
2015.02.16 @ 22:10:01

Time Off Btm:

2015.02.17 @ 03:55:46

TEST COMMENT: IF: Weak Blow , BOB in 26 minutes
IS: No Blow Back
FF: Strong Blow , BOB in 1 minute
FS: 3 inch Blow Back

PRESSURE SUMMARY



Time (Min.)	Pressure (psig)	Temp (deg F)	Annotation
0	2715.92	101.00	Initial Hydro-static
7	23.45	102.69	Open To Flow (1)
66	64.06	108.91	Shut-In(1)
156	1311.20	111.47	End Shut-In(1)
157	69.97	111.38	Open To Flow (2)
216	117.88	112.73	Shut-In(2)
341	1296.74	114.94	End Shut-In(2)
346	2640.83	109.28	Final Hydro-static

Recovery

Length (ft)	Description	Volume (bbl)
0.00	4556 GIP	0.00
62.00	GSY OMCW 20%G 2%O 24%M 54%W	0.87
174.00	GSY MWCO 24%G 14%M 30%W 32%O	2.44

Gas Rates

	Choke (inches)	Pressure (psig)	Gas Rate (Mcf/d)

* Recovery from multiple tests



**TRILOBITE
TESTING, INC**

DRILL STEM TEST REPORT

FLUID SUMMARY

Vincent Oil Corporation

21-28S-23W Ford

155 N Market Ste 700
Wichita, KS 67202

Malone 5-21

Job Ticket: 59753

DST#: 4

ATTN: Ken LeBlanc

Test Start: 2015.02.16 @ 19:55:46

Mud and Cushion Information

Mud Type: Gel Chem

Cushion Type:

Oil API:

deg API

Mud Weight: 9.00 lb/gal

Cushion Length:

ft

Water Salinity:

60000 ppm

Viscosity: 48.00 sec/qt

Cushion Volume:

bbbl

Water Loss: 8.77 in³

Gas Cushion Type:

Resistivity: ohm.m

Gas Cushion Pressure:

psig

Salinity: 9000.00 ppm

Filter Cake: 0.02 inches

Recovery Information

Recovery Table

Length ft	Description	Volume bbbl
0.00	4556 GIP	0.000
62.00	GSY OMCW 20%G 2%O 24%M 54%W	0.870
174.00	GSY MWCO 24%G 14%M 30%W 32%O	2.441

Total Length: 236.00 ft Total Volume: 3.311 bbl

Num Fluid Samples: 0

Num Gas Bombs: 0

Serial #:

Laboratory Name:

Laboratory Location:

Recovery Comments: RW w as .25@ 36 degrees

