



DRILL STEM TEST REPORT

Prepared For: **Palmer Oil, Inc.**

3118 N. Cummings Rd.
Garden City, KS 67846

ATTN: Luke Thompson

Rozelle #1-3

1-34s-33w Seward,KS

Start Date: 2015.04.17 @ 09:35:00

End Date: 2015.04.17 @ 19:48:30

Job Ticket #: 58810 DST #: 1

Trilobite Testing, Inc
1515 Commerce Parkway Hays, KS 67601
ph: 785-625-4778 fax: 785-625-5620

Printed: 2015.04.27 @ 09:53:37

Palmer Oil, Inc. 1-34s-33w Seward,KS Rozelle #1-3 DST # 1 Lansing 2015.04.17



**TRILOBITE
TESTING, INC**

DRILL STEM TEST REPORT

Palmer Oil, Inc.

1-34s-33w Seward,KS

3118 N. Cummings Rd.
Garden City, KS 67846

Rozelle #1-3

Job Ticket: 58810

DST#: 1

ATTN: Luke Thompson

Test Start: 2015.04.17 @ 09:35:00

GENERAL INFORMATION:

Formation: **Lansing**

Deviated: No Whipstock: ft (KB)

Time Tool Opened: 13:50:30

Time Test Ended: 19:48:30

Test Type: Conventional Bottom Hole (Initial)

Tester: Cornelio Landa III

Unit No: 67

Interval: 4950.00 ft (KB) To 5019.00 ft (KB) (TVD)

Reference Elevations: 2824.00 ft (KB)

Total Depth: 5019.00 ft (KB) (TVD)

2813.00 ft (CF)

Hole Diameter: 7.88 inches Hole Condition: Good

KB to GR/CF: 11.00 ft

Serial #: 8968 Outside

Press@RunDepth: 417.00 psig @ 4952.00 ft (KB)

Capacity: 8000.00 psig

Start Date: 2015.04.17 End Date: 2015.04.17

Last Calib.: 2015.04.17

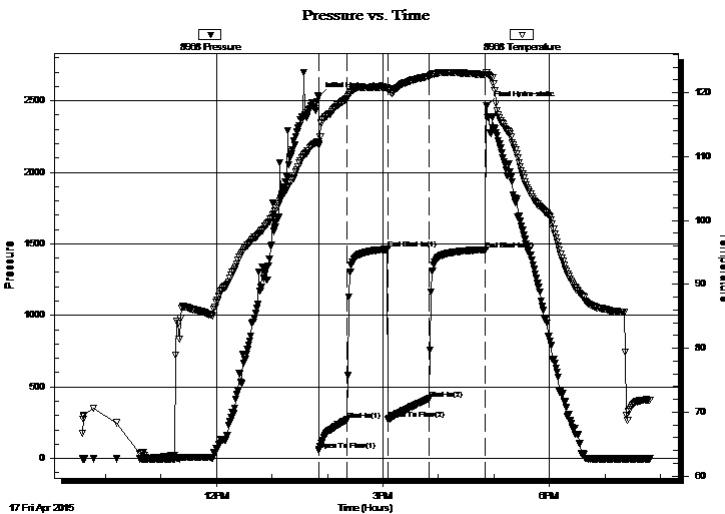
Start Time: 09:35:05 End Time: 19:48:30

Time On Btm: 2015.04.17 @ 13:50:00

Time Off Btm: 2015.04.17 @ 16:52:00

TEST COMMENT: IF: BOB.in 8 min. 15 seconds
IS: Bled off in 2 min.- No return
FF: BOB in 15 min.
FS: Bled off in 3 min.- No return

PRESSURE SUMMARY



Time (Min.)	Pressure (psig)	Temp (deg F)	Annotation
0	2527.71	112.32	Initial Hydro-static
1	58.31	111.76	Open To Flow (1)
31	267.62	119.01	Shut-In(1)
75	1462.78	120.79	End Shut-In(1)
76	273.65	120.49	Open To Flow (2)
120	417.00	122.55	Shut-In(2)
181	1459.80	122.79	End Shut-In(2)
182	2466.74	123.07	Final Hydro-static

Recovery

Length (ft)	Description	Volume (bbl)
693.00	G & Mcw 2g 20m 78w	7.53
240.00	Mcw 5m 95w	3.37

Gas Rates

	Choke (inches)	Pressure (psig)	Gas Rate (Mcf/d)



**TRILOBITE
TESTING, INC.**

DRILL STEM TEST REPORT

TOOL DIAGRAM

Palmer Oil, Inc.

1-34s-33w Seward,KS

3118 N. Cummings Rd.
Garden City, KS 67846

Rozelle #1-3

Job Ticket: 58810

DST#: 1

ATTN: Luke Thompson

Test Start: 2015.04.17 @ 09:35:00

Tool Information

Drill Pipe:	Length: 4705.00 ft	Diameter: 3.80 inches	Volume: 66.00 bbl	Tool Weight: 2500.00 lb
Heavy Wt. Pipe:	Length: 0.00 ft	Diameter: 0.00 inches	Volume: 0.00 bbl	Weight set on Packer: 28000.00 lb
Drill Collar:	Length: 240.00 ft	Diameter: 2.25 inches	Volume: 1.18 bbl	Weight to Pull Loose: 10000.00 lb
			<u>Total Volume: 67.18 bbl</u>	Tool Chased 0.00 ft
Drill Pipe Above KB:	22.00 ft			String Weight: Initial 74000.00 lb
Depth to Top Packer:	4950.00 ft			Final 76000.00 lb
Depth to Bottom Packer:	ft			
Interval between Packers:	69.00 ft			
Tool Length:	96.00 ft			
Number of Packers:	2	Diameter: 6.75 inches		

Tool Comments:

Tool Description

Tool Description	Length (ft)	Serial No.	Position	Depth (ft)	Accum. Lengths
Change Over Sub	1.00			4924.00	
Shut In Tool	5.00			4929.00	
Hydraulic tool	5.00			4934.00	
Jars	5.00			4939.00	
Safety Joint	2.00			4941.00	
Packer	5.00			4946.00	27.00 Bottom Of Top Packer
Packer	4.00			4950.00	
Stubb	1.00			4951.00	
Change Over Sub	1.00			4952.00	
Recorder	0.00	8356	Inside	4952.00	
Recorder	0.00	8968	Outside	4952.00	
Drill Pipe	63.00			5015.00	
Change Over Sub	1.00			5016.00	
Bullnose	3.00			5019.00	69.00 Bottom Packers & Anchor

Total Tool Length: 96.00



**TRILOBITE
TESTING, INC**

DRILL STEM TEST REPORT

FLUID SUMMARY

Palmer Oil, Inc.

1-34s-33w Seward,KS

3118 N. Cummings Rd.
Garden City, KS 67846

Rozelle #1-3

Job Ticket: 58810

DST#: 1

ATTN: Luke Thompson

Test Start: 2015.04.17 @ 09:35:00

Mud and Cushion Information

Mud Type: Gel Chem

Cushion Type:

Oil API:

deg API

Mud Weight: 9.00 lb/gal

Cushion Length:

ft

Water Salinity:

6750 ppm

Viscosity: 47.00 sec/qt

Cushion Volume:

bbbl

Water Loss: 7.16 in³

Gas Cushion Type:

Resistivity: 0.00 ohm.m

Gas Cushion Pressure:

psig

Salinity: 1400.00 ppm

Filter Cake: 1.00 inches

Recovery Information

Recovery Table

Length ft	Description	Volume bbbl
693.00	G & Mcw 2g 20m 78w	7.535
240.00	Mcw 5m 95w	3.367

Total Length: 933.00 ft Total Volume: 10.902 bbl

Num Fluid Samples: 0

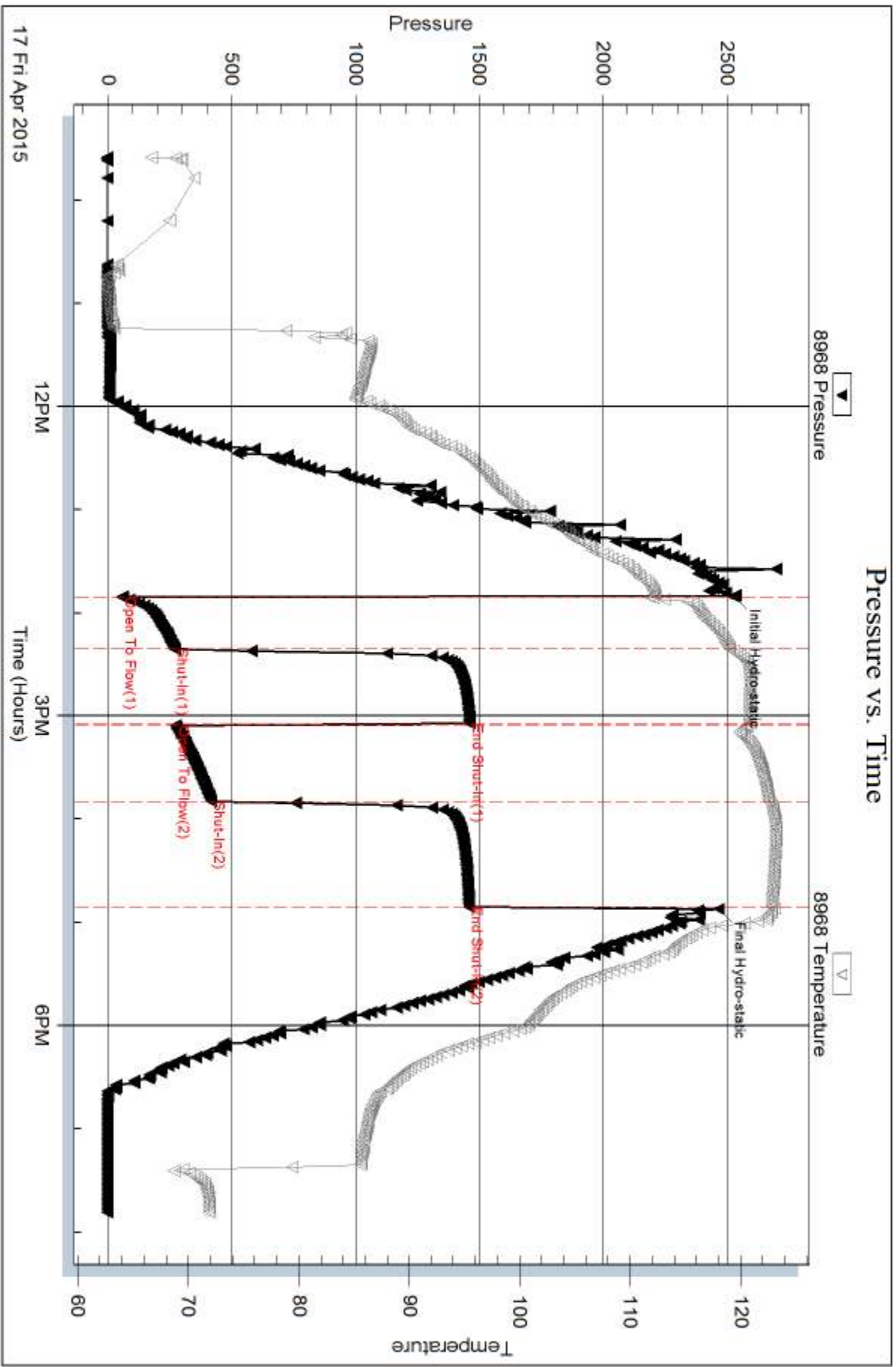
Num Gas Bombs: 0

Serial #:

Laboratory Name:

Laboratory Location:

Recovery Comments:



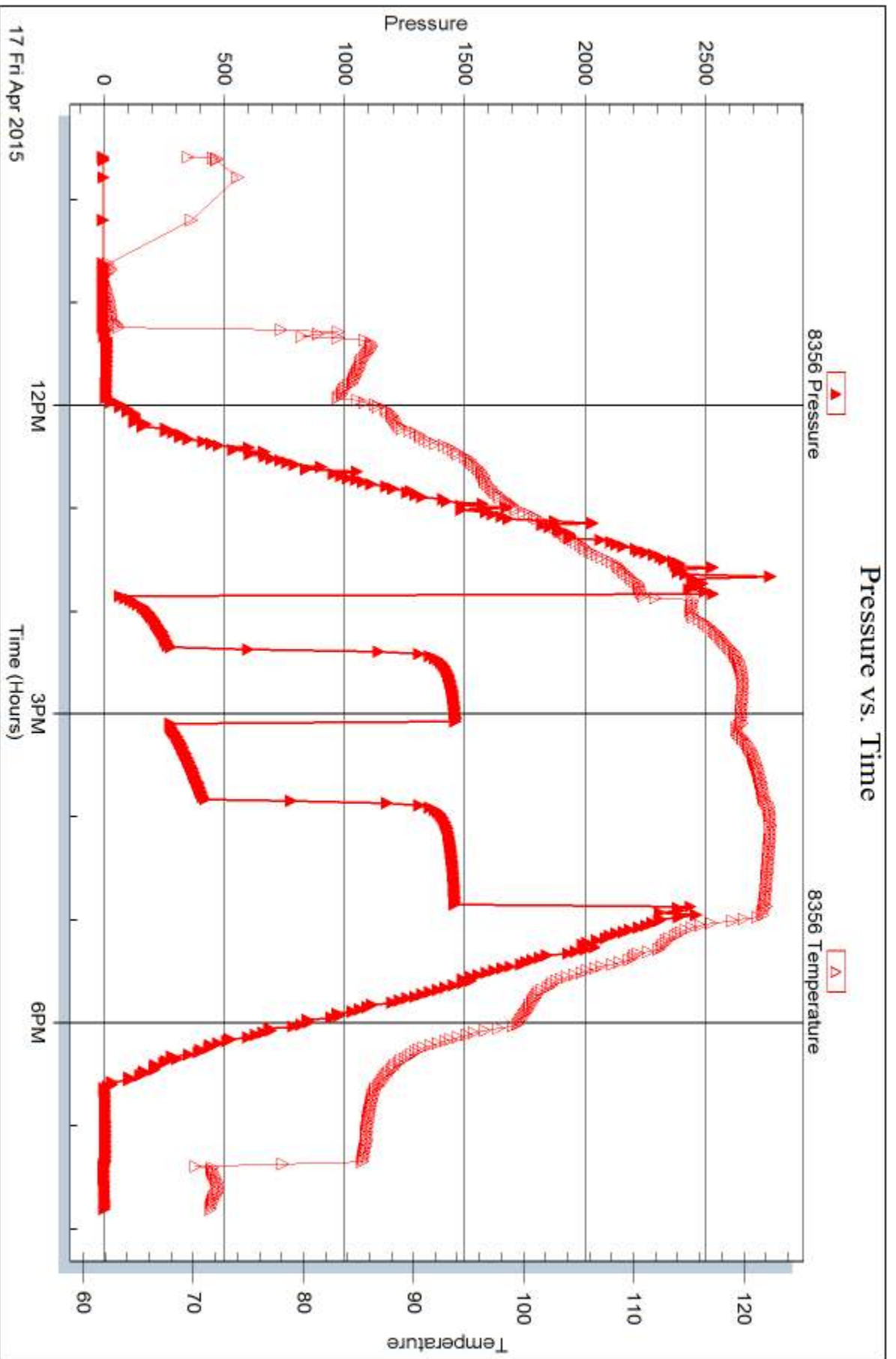
Serial #: 8356

Inside

Palmer Oil, Inc.

Rozelle #1-3

DST Test Number: 1





DRILL STEM TEST REPORT

Prepared For: **Palmer Oil, Inc.**

3118 N. Cummings RD.
Garden City, KS 67846

ATTN: Luke Thompson

Rozelle #1-3

1-34s-33w-Seward,KS

Start Date: 2015.04.18 @ 16:20:00

End Date: 2015.04.19 @ 01:08:15

Job Ticket #: 58811 DST #: 2

Trilobite Testing, Inc
1515 Commerce Parkway Hays, KS 67601
ph: 785-625-4778 fax: 785-625-5620

Printed: 2015.04.27 @ 09:40:00

Palmer Oil, Inc. 1-34s-33w-Seward,KS Rozelle #1-3 DST # 2 Marmaton 2015.04.18



TRILOBITE TESTING, INC

DRILL STEM TEST REPORT

Palmer Oil, Inc.

1-34s-33w-Seward,KS

3118 N. Cummings RD.
Garden City, KS 67846

Rozelle #1-3

Job Ticket: 58811

DST#: 2

ATTN: Luke Thompson

Test Start: 2015.04.18 @ 16:20:00

GENERAL INFORMATION:

Formation: **Marmaton**

Deviated: No Whipstock: ft (KB)

Time Tool Opened: 18:25:00

Time Test Ended: 01:08:15

Test Type: Conventional Bottom Hole (Reset)

Tester: Cornelio Landa III

Unit No: 67

Interval: 5075.00 ft (KB) To 5175.00 ft (KB) (TVD)

Reference Elevations: 2824.00 ft (KB)

Total Depth: 5019.00 ft (KB) (TVD)

2813.00 ft (CF)

Hole Diameter: 7.88 inches Hole Condition: Good

KB to GR/CF: 11.00 ft

Serial #: 8968 Outside

Press@RunDepth: 799.36 psig @ 5078.00 ft (KB)

Capacity: 8000.00 psig

Start Date: 2015.04.18

End Date:

2015.04.19

Last Calib.:

2015.04.19

Start Time: 16:20:05

End Time:

01:08:15

Time On Btm:

2015.04.18 @ 18:24:45

Time Off Btm:

2015.04.18 @ 21:15:00

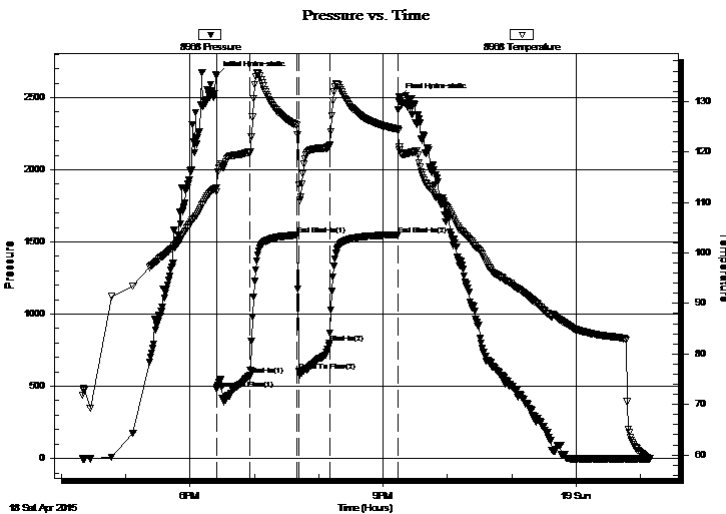
TEST COMMENT: IF: BOB in 1 min. GTS in 8 min.-Gauged gas-Took gas sample-See gas chart

IS: Bled off in 45 min.

FF: BOB in 30 seconds.- Fluid to surface in 27 min.-Gauged gas

FS: Bled off in 60 min.

PRESSURE SUMMARY



Time (Min.)	Pressure (psig)	Temp (deg F)	Annotation
0	2653.42	112.95	Initial Hydro-static
1	478.29	112.14	Open To Flow (1)
32	574.13	119.95	Shut-In(1)
75	1548.27	125.22	End Shut-In(1)
77	605.09	113.55	Open To Flow (2)
106	799.36	121.29	Shut-In(2)
169	1551.05	124.49	End Shut-In(2)
171	2502.51	120.98	Final Hydro-static

Recovery

Length (ft)	Description	Volume (bbl)
240.00	W 100w	1.18
315.00	Gw 30g 70w	4.42
189.00	Ocm & G 10o 40m 50g	2.65
189.00	Ocm & G 2o 35m 63g	2.65
315.00	Gm 15g 85m	4.42

* Recovery from multiple tests

Gas Rates

	Choke (inches)	Pressure (psig)	Gas Rate (Mcf/d)
First Gas Rate	0.75	13.00	427.98
Last Gas Rate	0.75	19.00	521.70
Max. Gas Rate	0.75	19.00	521.70



**TRILOBITE
TESTING, INC.**

DRILL STEM TEST REPORT

TOOL DIAGRAM

Palmer Oil, Inc.

1-34s-33w-Seward,KS

3118 N. Cummings RD.
Garden City, KS 67846

Rozelle #1-3

Job Ticket: 58811

DST#: 2

ATTN: Luke Thompson

Test Start: 2015.04.18 @ 16:20:00

Tool Information

Drill Pipe:	Length: 4828.00 ft	Diameter: 3.80 inches	Volume: 67.72 bbl	Tool Weight: 2500.00 lb
Heavy Wt. Pipe:	Length: 0.00 ft	Diameter: 0.00 inches	Volume: 0.00 bbl	Weight set on Packer: 28000.00 lb
Drill Collar:	Length: 240.00 ft	Diameter: 2.25 inches	Volume: 1.18 bbl	Weight to Pull Loose: 10000.00 lb
			<u>Total Volume: 68.90 bbl</u>	Tool Chased 0.00 ft
Drill Pipe Above KB:	20.00 ft			String Weight: Initial 72000.00 lb
Depth to Top Packer:	5075.00 ft			Final 74000.00 lb
Depth to Bottom Packer:	ft			
Interval between Packers:	100.00 ft			
Tool Length:	127.00 ft			
Number of Packers:	2	Diameter: 6.75 inches		

Tool Comments:

Tool Description

Tool Description	Length (ft)	Serial No.	Position	Depth (ft)	Accum. Lengths
Change Over Sub	1.00			5049.00	
Shut In Tool	5.00			5054.00	
Hydraulic tool	5.00			5059.00	
Jars	5.00			5064.00	
Safety Joint	2.00			5066.00	
Packer	5.00			5071.00	27.00 Bottom Of Top Packer
Packer	4.00			5075.00	
Stubb	1.00			5076.00	
Perforations	1.00			5077.00	
Change Over Sub	1.00			5078.00	
Recorder	0.00	8356	Inside	5078.00	
Recorder	0.00	8968	Outside	5078.00	
Drill Pipe	63.00			5141.00	
Change Over Sub	1.00			5142.00	
Perforations	30.00			5172.00	
Bullnose	3.00			5175.00	100.00 Bottom Packers & Anchor
Total Tool Length:	127.00				



**TRILOBITE
TESTING, INC**

DRILL STEM TEST REPORT

FLUID SUMMARY

Palmer Oil, Inc.

1-34s-33w-Seward,KS

3118 N. Cummings RD.
Garden City, KS 67846

Rozelle #1-3

Job Ticket: 58811

DST#: 2

ATTN: Luke Thompson

Test Start: 2015.04.18 @ 16:20:00

Mud and Cushion Information

Mud Type: Gel Chem

Cushion Type:

Oil API:

deg API

Mud Weight: 10.00 lb/gal

Cushion Length:

ft

Water Salinity:

20000 ppm

Viscosity: 58.00 sec/qt

Cushion Volume:

bbbl

Water Loss: 9.62 in³

Gas Cushion Type:

Resistivity: 0.00 ohm.m

Gas Cushion Pressure:

psig

Salinity: 2000.00 ppm

Filter Cake: 1.00 inches

Recovery Information

Recovery Table

Length ft	Description	Volume bbl
240.00	W 100w	1.180
315.00	Gw 30g 70w	4.419
189.00	Ocm & G 10o 40m 50g	2.651
189.00	Ocm & G 2o 35m 63g	2.651
315.00	Gm 15g 85m	4.419

Total Length: 1248.00 ft

Total Volume: 15.320 bbl

Num Fluid Samples: 0

Num Gas Bombs: 0

Serial #:

Laboratory Name:

Laboratory Location:

Recovery Comments:



**TRILOBITE
TESTING, INC.**

DRILL STEM TEST REPORT

GAS RATES

Palmer Oil, Inc.

1-34s-33w-Seward,KS

3118 N. Cummings RD.
Garden City, KS 67846

Rozelle #1-3

Job Ticket: 58811

DST#: 2

ATTN: Luke Thompson

Test Start: 2015.04.18 @ 16:20:00

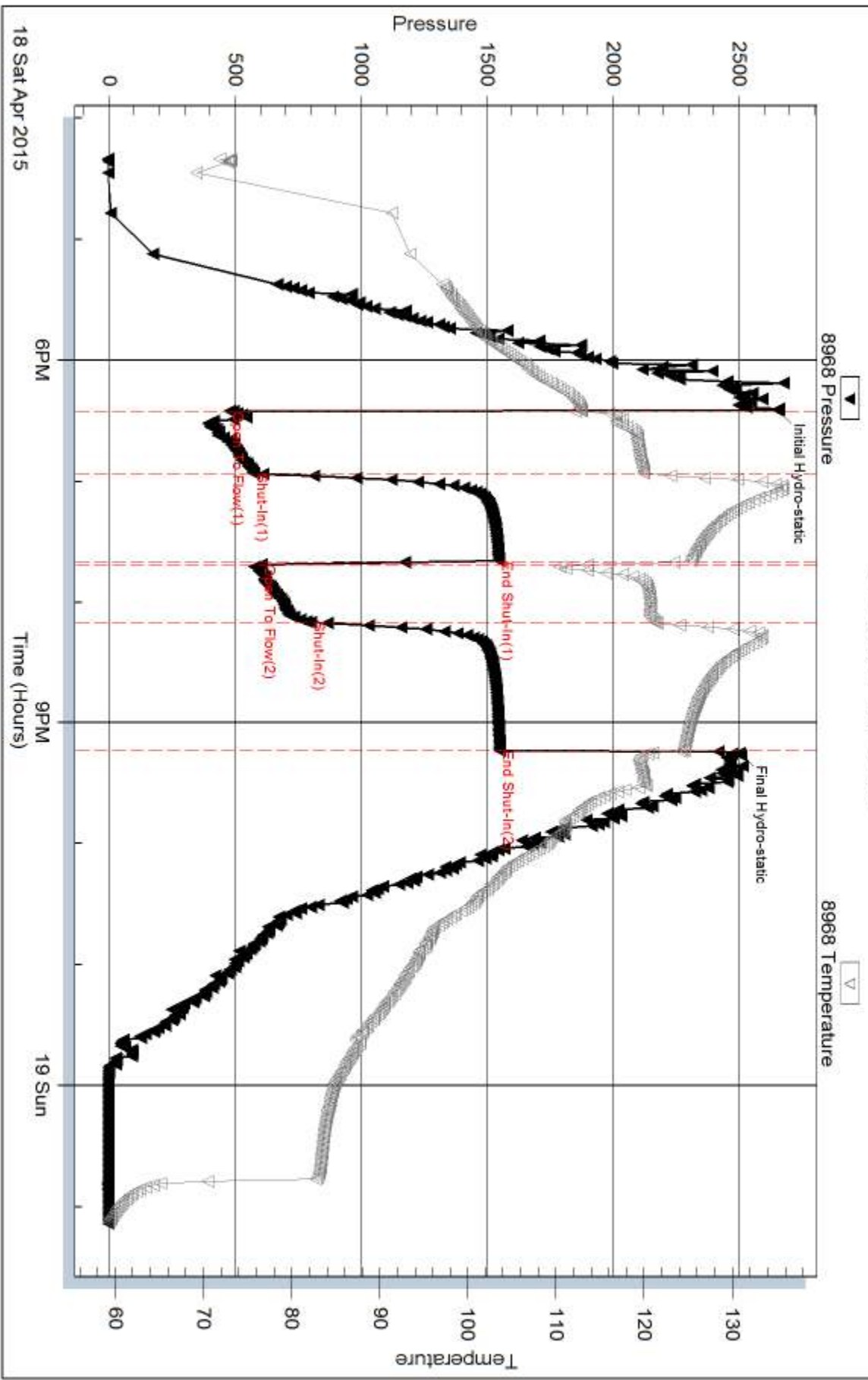
Gas Rates Information

Temperature: 59 (deg F)
Relative Density: 0.65
Z Factor: 0.8

Gas Rates Table

Flow Period	Elapsed Time	Choke (inches)	Pressure (psig)	Gas Rate (Mcf/d)
1	10	0.75	13.00	427.98
1	20	0.75	15.00	459.22
1	30	0.75	15.00	459.22
2	10	0.75	14.00	443.60
2	20	0.75	16.00	474.84
2	30	0.75	19.00	521.70

Pressure vs. Time





DRILL STEM TEST REPORT

Prepared For: **Palmer Oil, Inc.**

3118 N. Cummings Rd.
Garden City, KS 67846

ATTN: Luke Thompson

Rozelle #1-3

1-34s-33w Seward,KS

Start Date: 2015.04.22 @ 19:01:00

End Date: 2015.04.23 @ 01:35:30

Job Ticket #: 58812 DST #: 3

Trilobite Testing, Inc
1515 Commerce Parkway Hays, KS 67601
ph: 785-625-4778 fax: 785-625-5620

Printed: 2015.04.27 @ 09:52:55



TRILOBITE TESTING, INC

DRILL STEM TEST REPORT

Palmer Oil, Inc.

1-34s-33w Seward,KS

3118 N. Cummings Rd.
Garden City, KS 67846

Rozelle #1-3

Job Ticket: 58812

DST#: 3

ATTN: Luke Thompson

Test Start: 2015.04.22 @ 19:01:00

GENERAL INFORMATION:

Formation: **Chester**

Deviated: No Whipstock: ft (KB)

Time Tool Opened: 21:54:45

Time Test Ended: 01:35:30

Test Type: Conventional Bottom Hole (Reset)

Tester: Cornelio Landa III

Unit No: 67

Interval: 6146.00 ft (KB) To 6200.00 ft (KB) (TVD)

Reference Elevations: 2824.00 ft (KB)

Total Depth: 6200.00 ft (KB) (TVD)

2813.00 ft (CF)

Hole Diameter: 7.88 inches Hole Condition: Good

KB to GR/CF: 11.00 ft

Serial #: 8968 Outside

Press@RunDepth: 27.73 psig @ 6148.00 ft (KB)

Capacity: 8000.00 psig

Start Date: 2015.04.22

End Date:

2015.04.23

Last Calib.:

2015.04.23

Start Time:

19:01:05

End Time:

01:35:29

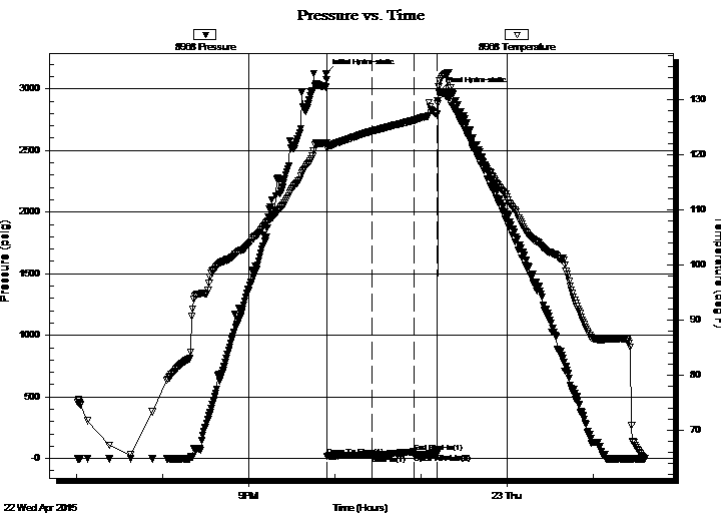
Time On Btm:

2015.04.22 @ 21:54:00

Time Off Btm:

2015.04.22 @ 23:12:15

TEST COMMENT: IF: Weak surface blow -Built to 1/4". blow -Died in 8 min.-Blew a second time-1/4" -Died @ 20 min. into
IS: No return
FF: No blow -Flushed tool-Good surge-Pulled test



PRESSURE SUMMARY

Time (Min.)	Pressure (psig)	Temp (deg F)	Annotation
0	3127.49	122.04	Initial Hydro-static
1	20.57	121.16	Open To Flow (1)
32	27.73	124.20	Shut-In(1)
61	53.27	126.13	End Shut-In(1)
62	31.35	126.20	Open To Flow (2)
78	39.15	127.32	Shut-In(2)
79	2974.77	132.30	Final Hydro-static

Recovery

Length (ft)	Description	Volume (bbl)
5.00	Mud 100m	0.02

* Recovery from multiple tests

Gas Rates

	Choke (inches)	Pressure (psig)	Gas Rate (Mcf/d)



**TRILOBITE
TESTING, INC**

DRILL STEM TEST REPORT

TOOL DIAGRAM

Palmer Oil, Inc.

1-34s-33w Seward,KS

3118 N. Cummings Rd.
Garden City, KS 67846

Rozelle #1-3

Job Ticket: 58812

DST#: 3

ATTN: Luke Thompson

Test Start: 2015.04.22 @ 19:01:00

Tool Information

Drill Pipe:	Length: 5894.00 ft	Diameter: 3.80 inches	Volume: 82.68 bbl	Tool Weight: 2500.00 lb
Heavy Wt. Pipe:	Length: 0.00 ft	Diameter: 0.00 inches	Volume: 0.00 bbl	Weight set on Packer: 27000.00 lb
Drill Collar:	Length: 240.00 ft	Diameter: 2.25 inches	Volume: 1.18 bbl	Weight to Pull Loose: 10000.00 lb
			<u>Total Volume: 83.86 bbl</u>	Tool Chased 0.00 ft
Drill Pipe Above KB:	15.00 ft			String Weight: Initial 82000.00 lb
Depth to Top Packer:	6146.00 ft			Final 82000.00 lb
Depth to Bottom Packer:	ft			
Interval between Packers:	54.00 ft			
Tool Length:	81.00 ft			
Number of Packers:	2	Diameter: 6.75 inches		

Tool Comments:

Tool Description

Length (ft) Serial No. Position Depth (ft) Accum. Lengths

Tool Description	Length (ft)	Serial No.	Position	Depth (ft)	Accum. Lengths
Change Over Sub	1.00			6120.00	
Shut In Tool	5.00			6125.00	
Hydraulic tool	5.00			6130.00	
Jars	5.00			6135.00	
Safety Joint	2.00			6137.00	
Packer	5.00			6142.00	27.00 Bottom Of Top Packer
Packer	4.00			6146.00	
Stubb	1.00			6147.00	
Change Over Sub	1.00			6148.00	
Recorder	0.00	8356	Inside	6148.00	
Recorder	0.00	8968	Outside	6148.00	
Drill Pipe	31.00			6179.00	
Change Over Sub	1.00			6180.00	
Perforations	17.00			6197.00	
Bullnose	3.00			6200.00	54.00 Bottom Packers & Anchor

Total Tool Length: 81.00



**TRILOBITE
TESTING, INC**

DRILL STEM TEST REPORT

FLUID SUMMARY

Palmer Oil, Inc.

1-34s-33w Seward,KS

3118 N. Cummings Rd.
Garden City, KS 67846

Rozelle #1-3

Job Ticket: 58812

DST#: 3

ATTN: Luke Thompson

Test Start: 2015.04.22 @ 19:01:00

Mud and Cushion Information

Mud Type: Gel Chem

Cushion Type:

Oil API:

deg API

Mud Weight: 10.00 lb/gal

Cushion Length:

ft

Water Salinity:

ppm

Viscosity: 50.00 sec/qt

Cushion Volume:

bbbl

Water Loss: 9.17 in³

Gas Cushion Type:

Resistivity: 0.00 ohm.m

Gas Cushion Pressure:

psig

Salinity: 1200.00 ppm

Filter Cake: 1.00 inches

Recovery Information

Recovery Table

Length ft	Description	Volume bbl
5.00	Mud 100m	0.025

Total Length: 5.00 ft Total Volume: 0.025 bbl

Num Fluid Samples: 0

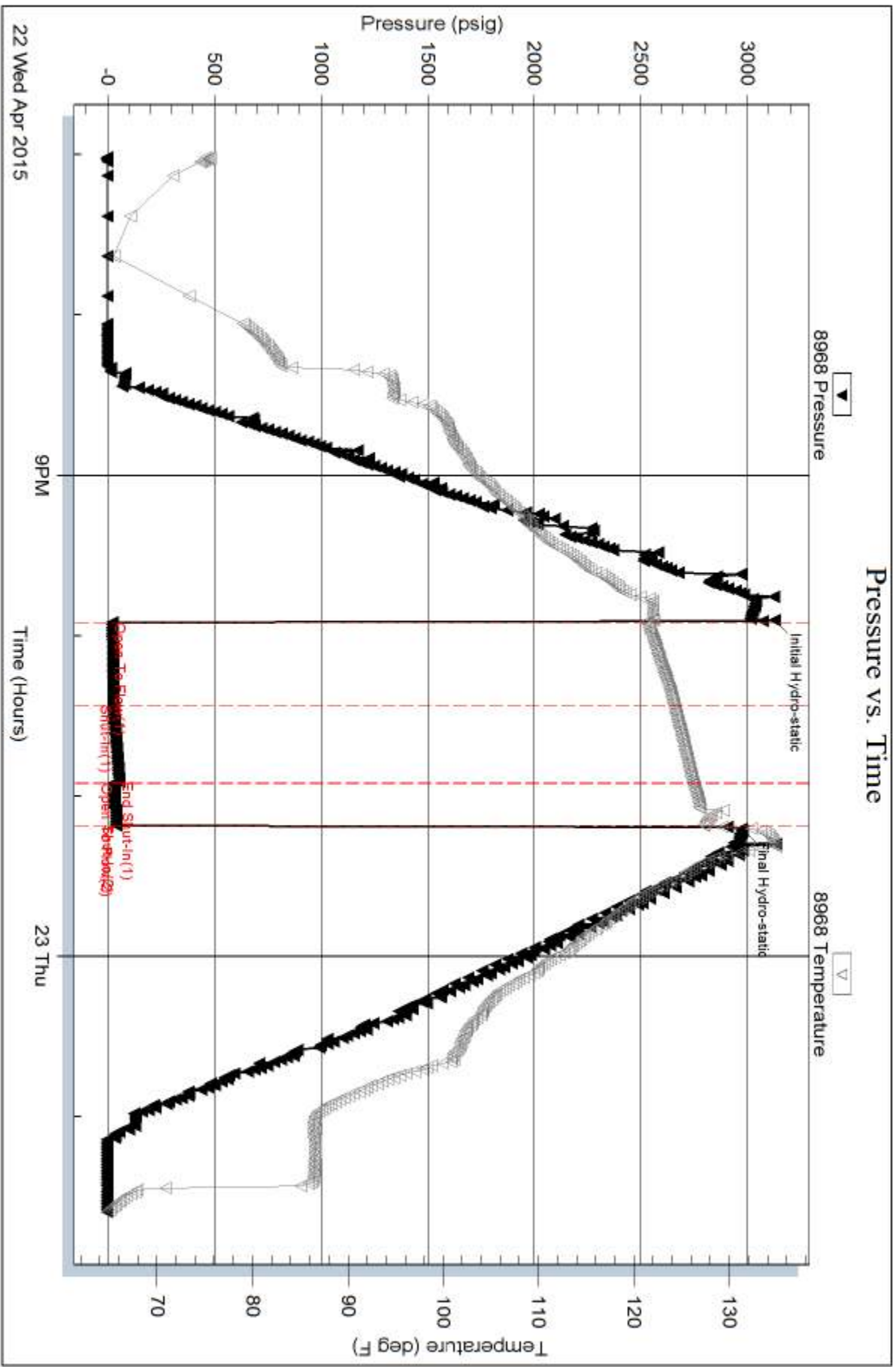
Num Gas Bombs: 0

Serial #:

Laboratory Name:

Laboratory Location:

Recovery Comments:



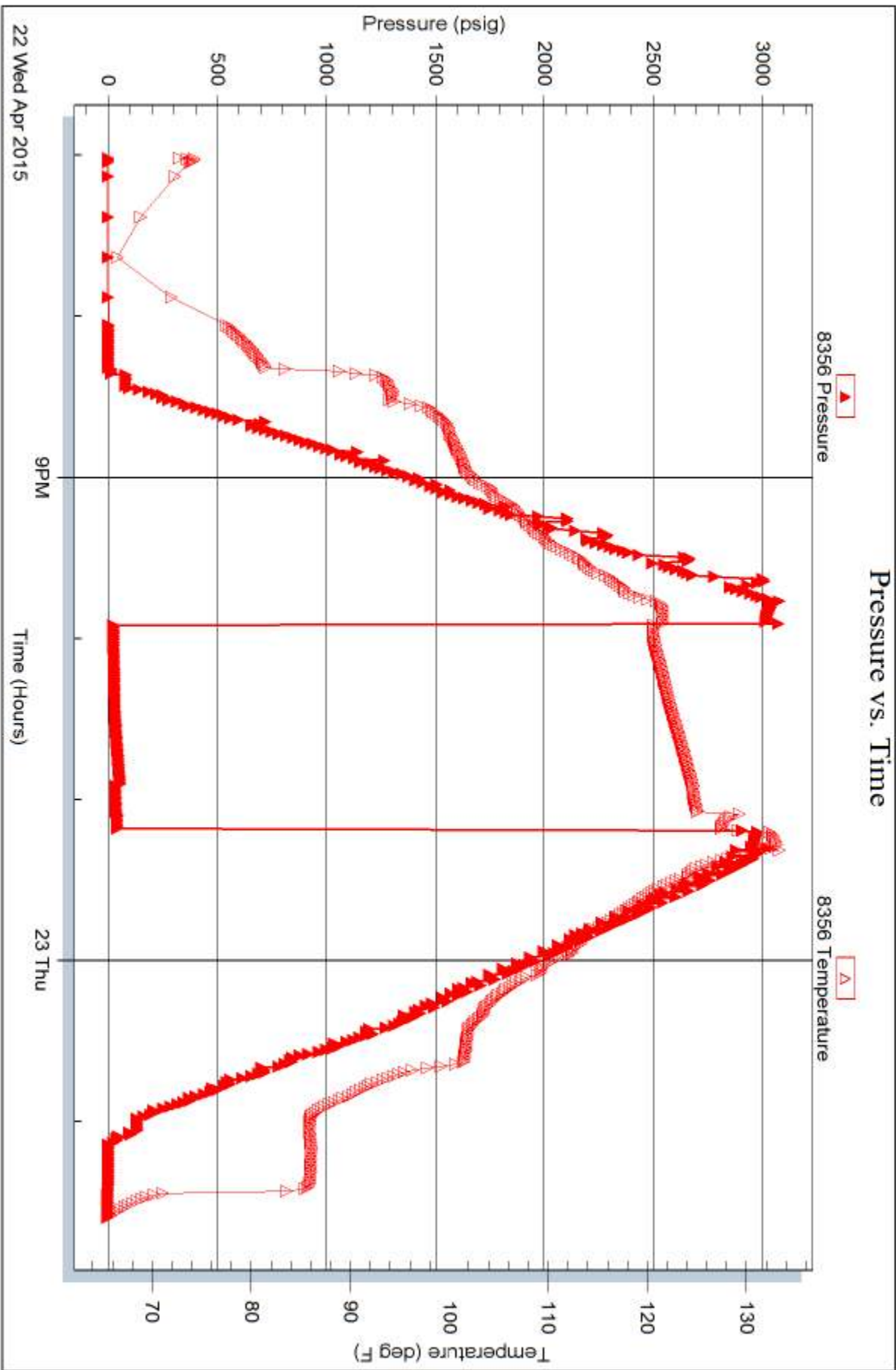
Serial #: 8356

Inside

Palmer Oil, Inc.

Rozelle #1-3

DST Test Number: 3



Trilobite Testing, Inc

Ref. No: 58812

Printed: 2015.04.27 @ 09:52:57



TRILOBITE TESTING INC.

1515 Commerce Parkway • Hays, Kansas 67601

Test Ticket

NO. 58810

Well Name & No. Rozelle #1-3 Test No. 1 Date 4-17-15
 Company Palmer Oil, Inc. Elevation 2824 KB 2813 GL
 Address 3118 N. Cummings Rd. - Garden City 67846
 Co. Rep / Geo. Luke Thompson Rig Duke #5
 Location: Sec. 1 Twp. 34-S Rge. 33-W Co. Seward State Ks

Interval Tested 4950-5019 Zone Tested Lansing
 Anchor Length 69' Drill Pipe Run 4705' Mud Wt. 9.2
 Top Packer Depth 4946 Drill Collars Run 240 Vis 47
 Bottom Packer Depth 4950 Wt. Pipe Run Ø WL 7.6
 Total Depth 5019 Chlorides 1400 ppm System LCM #3

Blow Description IF: B.O.B. in 8 min. 15 seconds
ISI: Bled off in 2 min - No Return
FF: B.O.B. in 15 min.

FSI: Bled off in 5 min. - No Return

Rec	Feet of	%gas	%oil	%water	%mud
<u>693</u>	<u>Ø ↓ MCW</u>	<u>2</u>	<u>78</u>	<u>20</u>	<u>20</u>
<u>240</u>	<u>MCW</u>		<u>95</u>	<u>5</u>	<u>5</u>
Rec	Feet of	%gas	%oil	%water	%mud
Rec	Feet of	%gas	%oil	%water	%mud
Rec	Feet of	%gas	%oil	%water	%mud

Rec Total 933 BHT Gravity — API RW .850 @ 71 ° F Chlorides 6750 ppm

(A) Initial Hydrostatic	<u>2528</u>	<input checked="" type="checkbox"/> Test	<u>1250</u>	T-On Location	<u>09:35</u>
(B) First Initial Flow	<u>58</u>	<input checked="" type="checkbox"/> Jars	<u>250</u>	T-Started	<u>09:35</u>
(C) First Final Flow	<u>267</u>	<input checked="" type="checkbox"/> Safety Joint	<u>75</u>	T-Open	<u>13:50</u>
(D) Initial Shut-In	<u>1463</u>	<input checked="" type="checkbox"/> Circ Sub	<u>NIC</u>	T-Pulled	<u>16:50</u>
(E) Second Initial Flow	<u>274</u>	<input type="checkbox"/> Hourly Standby		T-Out	<u>19:48</u>
(F) Second Final Flow	<u>417</u>	<input checked="" type="checkbox"/> Mileage	<u>80 RIT 80</u>	Comments	
(G) Final Shut-In	<u>1460</u>	<input type="checkbox"/> Sampler			
(H) Final Hydrostatic	<u>2467</u>	<input type="checkbox"/> Straddle			

Initial Open 30
 Initial Shut-In 45
 Final Flow 45
 Final Shut-In 60

Ruined Shale Packer
 Ruined Packer
 Extra Copies

Sub Total 0
 Total 1655
 MP/DST Disc't

Sub Total 1655

Approved By _____ Our Representative C. B. ...

Trilobite Testing Inc. shall not be liable for damaged of any kind of the property or personnel of the one for whom a test is made, or for any loss suffered or sustained, directly or indirectly, through the use of its equipment, or its statements or opinion concerning the results of any test, tools lost or damaged in the hole shall be paid for at cost by the party for whom the test is made.



TRILOBITE TESTING INC.

1515 Commerce Parkway • Hays, Kansas 67601

Test Ticket

NO. 58811

Well Name & No. Rozelle #1-3 Test No. 2 Date 4-18-15
 Company Palmer Oil, Inc. Elevation 2824 KB 2813 GL
 Address 3118 N. Cummings Rd. - Garden City, KS 67846
 Co. Rep / Geo. Lyke Thompson Rig Duke #5
 Location: Sec. 1 Twp. 34-5 Rge. 33-W Co. Seward State KS

Interval Tested 5075-5175 Zone Tested Marmaton
 Anchor Length 100' Drill Pipe Run 4828' Mud Wt. 9.6
 Top Packer Depth 5071 Drill Collars Run 240 Vis 58
 Bottom Packer Depth 5075 Wt. Pipe Run Ø WL 9.6
 Total Depth 5175 Chlorides 2000 ppm System LCM #2

Blow Description IF: Bob in 1 min - Gaged gas - Took gas sample - see gas chart
ISF: Bled off in 45 min. | G.T.S in 8 min. IF
FF: Bob. in 30 seconds - Fluid to surface in 27 min - G.T.S 1 min - Gaged Gas
FSF: Bled off 60 min.

Rec	Feet of	%gas	%oil	%water	%mud
<u>315</u>	<u>GM</u>	<u>15</u>	<u>Ø</u>	<u>85</u>	<u>Ø</u>
<u>189</u>	<u>OCM + G</u>	<u>63</u>	<u>2</u>	<u>35</u>	<u>Ø</u>
<u>189</u>	<u>OCM + G</u>	<u>50</u>	<u>10</u>	<u>40</u>	<u>Ø</u>
<u>315</u>	<u>GW</u>	<u>30</u>	<u>Ø</u>	<u>70</u>	<u>Ø</u>
<u>240</u>	<u>Water</u>	<u>Ø</u>	<u>Ø</u>	<u>100</u>	<u>Ø</u>

Rec Total 1248 BHT 121 Gravity — API RW 550 @ 42 °F Chlorides 200,000 ppm

- (A) Initial Hydrostatic 2653
- (B) First Initial Flow 478
- (C) First Final Flow 574
- (D) Initial Shut-In 1548
- (E) Second Initial Flow 605
- (F) Second Final Flow 799
- (G) Final Shut-In 1551
- (H) Final Hydrostatic 2503

- Test 1250
 - Jars 250
 - Safety Joint 75
 - Circ Sub 50
 - Hourly Standby
 - Mileage 80
 - Sampler
 - Straddle
 - Shale Packer
 - Extra Packer
 - Extra Recorder
 - Day Standby
 - Accessibility
- Sub Total 1705

T-On Location 16:20
 T-Started 16:20
 T-Open 18:25
 T-Pulled 21:10
 T-Out 108

Comments Geo Said Time on Bank 24:30

- Ruined Shale Packer
- Ruined Packer
- Extra Copies

Sub Total 0
 Total 1705
 MP/DST Disc't

Initial Open 30
 Initial Shut-In 45
 Final Flow 30
 Final Shut-In 60

Approved By _____ Our Representative [Signature]

Trilobite Testing Inc. shall not be liable for damaged of any kind of the property or personnel of the one for whom a test is made, or for any loss suffered or sustained, directly or indirectly, through the use of its equipment, or its statements or opinion concerning the results of any test, tools lost or damaged in the hole shall be paid for at cost by the party for whom the test is made.



TRILOBITE TESTING INC.

1515 Commerce Parkway • Hays, Kansas 67601

Test Ticket

NO. 58812

Well Name & No. Rozelle #1-3 Test No. 3 Date 4-22-15
 Company Palmer Oil, Inc Elevation 2824 KB 2813 GL
 Address 3115 N. Cummings Rd. Garden City, KS 67844
 Co. Rep / Geo. Leke Thompson Rig Duke #5
 Location: Sec. 1 Twp. 34-S Rge. 33W Co. Seward State KS

Interval Tested 6146-6200 Zone Tested Chester
 Anchor Length 54' Drill Pipe Run 5894' Mud Wt. 9.5
 Top Packer Depth 6142 Drill Collars Run 240 Vis 50
 Bottom Packer Depth 6144 Wt. Pipe Run 6 WL 9.2
 Total Depth 6200 Chlorides 1200 ppm System LCM #6

Blow Description IF: Weak surface blow - Built to 1/4 on Pipe in 8 min - Blow as second time - Weak K surface blow
FF: NO Return Built to 1/8 - Died @ 20 min into open
FF: NO blow. Flushed tool - Good surge - pulled test

KST:

Rec	Feet of	%gas	%oil	%water	%mud
<u>5</u>	<u>Mud</u>				<u>100%</u>

Rec Total 5 BHT 132 Gravity _____ API RW _____ @ _____ ° F Chlorides _____ ppm

(A) Initial Hydrostatic <u>3127</u>	<input checked="" type="checkbox"/> Test <u>1350</u>	T-On Location <u>19:00</u>
(B) First Initial Flow <u>21</u>	<input checked="" type="checkbox"/> Jars <u>250</u>	T-Started <u>19:01</u>
(C) First Final Flow <u>28</u>	<input checked="" type="checkbox"/> Safety Joint <u>75</u>	T-Open <u>21:54</u>
(D) Initial Shut-In <u>53</u>	<input checked="" type="checkbox"/> Circ Sub <u>N/C</u>	T-Pulled <u>23:09 23:09</u>
(E) Second Initial Flow <u>31</u>	<input checked="" type="checkbox"/> Hourly Standby <u>6 hrs + 2 Days</u>	T-Out <u>01:35</u>
(F) Second Final Flow <u>39</u>	<input checked="" type="checkbox"/> Mileage <u>80</u> <u>last test on 4-15-15</u>	Comments _____
(G) Final Shut-In <u>-</u>	<input type="checkbox"/> Sampler _____	
(H) Final Hydrostatic <u>2975</u>	<input type="checkbox"/> Straddle _____	<input type="checkbox"/> Ruined Shale Packer _____
	<input type="checkbox"/> Shale Packer _____	<input type="checkbox"/> Ruined Packer _____
Initial Open <u>30</u>	<input type="checkbox"/> Extra Packer _____	<input type="checkbox"/> Extra Copies _____
Initial Shut-In <u>30</u>	<input type="checkbox"/> Extra Recorder _____	Sub Total <u>1791.67</u>
Final Flow <u>15</u>	<input checked="" type="checkbox"/> Day Standby <u>2 days 6 hrs</u>	Total <u>7:30 - 7:45 made up tool</u>
Final Shut-In <u>pull</u>	<input type="checkbox"/> Accessibility <u>1.5d 53.75h</u>	MP/DST Disc't <u>7:45 - 8:15</u>
	Sub Total <u>1755</u>	<u>Waiting on Rig</u>
		<u>30 minutes</u>

Approved By _____ Our Representative _____
 Trilobite Testing Inc. shall not be liable for damaged of any kind of the property or personnel of the one for whom a test is made, or for any loss suffered or sustained, directly or indirectly, through the use of its equipment, or its statements or opinion concerning the results of any test, tools lost or damaged in the hole shall be paid for at cost by the party for whom the test is made.