

DIAMOND TESTING, LLC
P.O. Box 157
HOISINGTON, KANSAS 67544
(620) 653-7550 • (800) 542-7313
stolsv3dst1

Company Bird Dog Oil, LLC Lease & Well No. Stoltenberg-Svoboda No. 3-17
Elevation 1895 KB Formation Lansing/Kansas City "H-J" Effective Pay _____ Ft. Ticket No. K189
Date 10-26-14 Sec. 17 Twp. 16S Range 10W County Ellsworth State Kansas
Test Approved By Adam Nighswonger Diamond Representative Jason McLemore

Formation Test No. 1 Interval Tested from 3,175 ft. to 3,235 ft. Total Depth 3,235 ft.
Packer Depth 3,170 ft. Size 6 3/4 in. Packer Depth _____ ft. Size _____ in.
Packer Depth 3,175 ft. Size 6 3/4 in. Packer Depth _____ ft. Size _____ in.
Depth of Selective Zone Set _____ ft.

Top Recorder Depth (Inside) 3,156 ft. Recorder Number 5513 Cap. 5,000 psi.
Bottom Recorder Depth (Outside) 3,157 ft. Recorder Number 5588 Cap. 6,000 psi.
Below Straddle Recorder Depth _____ ft. Recorder Number _____ Cap. _____ psi.

Drilling Contractor Southwind Drilling, Inc. - Rig 6 Drill Collar Length _____ ft. I.D. _____ in.
Mud Type Chemical Viscosity 62 Weight Pipe Length _____ ft. I.D. _____ in.
Weight 9.2 Water Loss 10.2 cc. Drill Pipe Length 3,143 ft. I.D. 3 1/2 in.
Chlorides 8,600 P.P.M. Test Tool Length 32 ft. Tool Size 3 1/2-IF in.
Jars: Make Sterling Serial Number 6 Anchor Length 29' perf. w/31' drill pipe Size 4 1/2-FH in.
Did Well Flow? No Reversed Out No Surface Choke Size 1 in. Bottom Choke Size 5/8 in.
Main Hole Size 7 7/8 in. Tool Joint Size 4 1/2-XH in.

Blow: 1st Open: Weak, surface blow. Died in 7 mins. No blow back during shut-in.
2nd Open: No blow. Flushed tool & received a surge. No blow. Pulled tool.

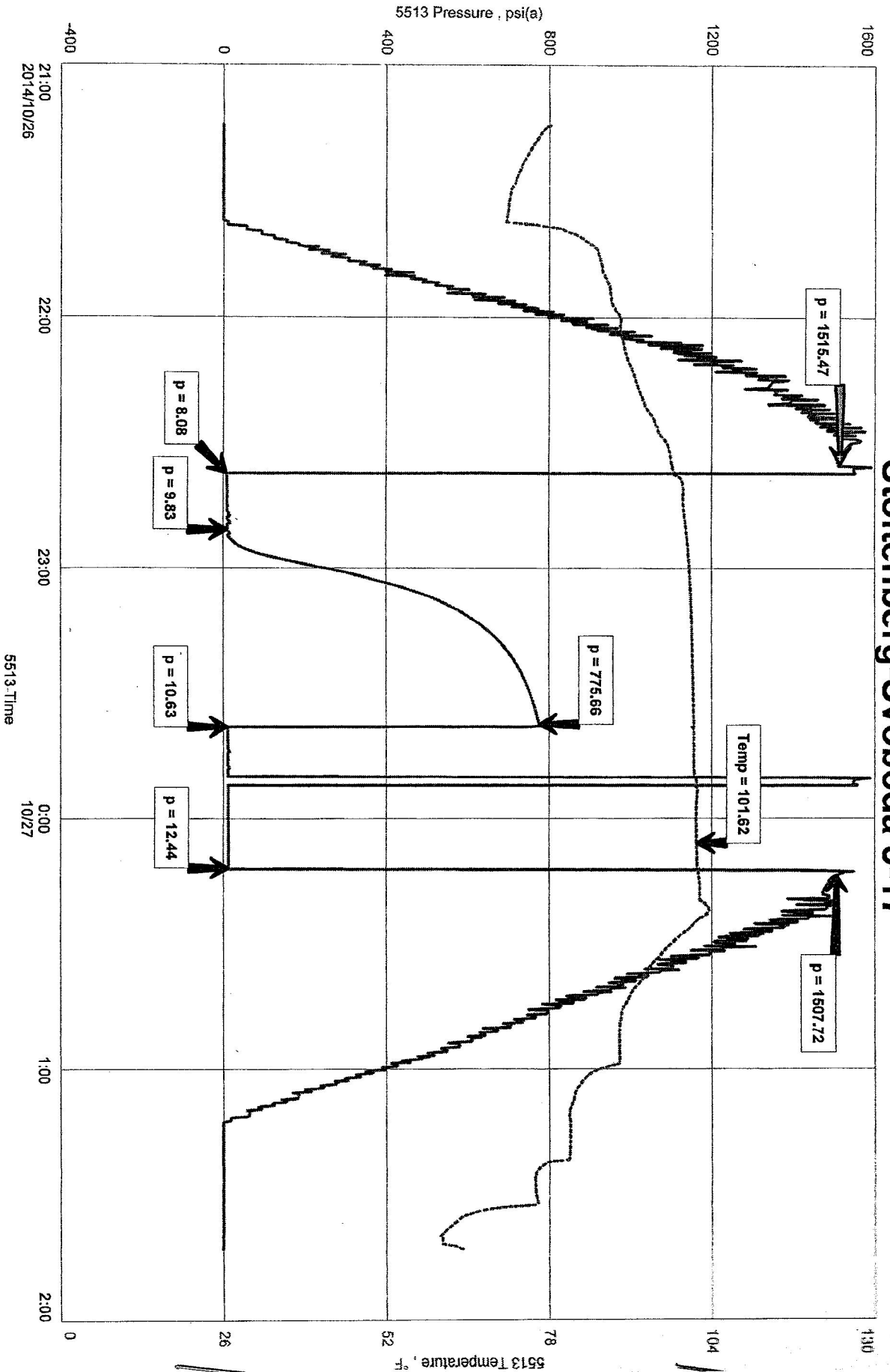
Recovered 6 ft. of drilling mud = .085380 bbls.
Recovered _____ ft. of _____
Recovered _____ ft. of _____
Recovered _____ ft. of _____
Recovered _____ ft. of _____
Recovered _____ ft. of _____
Remarks _____

Time Set Packer(s) 10:41 P.M. Time Started off Bottom 12:16 A.M. Maximum Temperature 102°
Initial Hydrostatic Pressure.....(A) 1515 P.S.I.
Initial Flow Period.....Minutes 15 (B) 8 P.S.I. to (C) 10 P.S.I.
Initial Closed In Period.....Minutes 45 (D) 776 P.S.I.
Final Flow Period.....Minutes 35 (E) 11 P.S.I. to (F) 12 P.S.I.
Final Closed In Period.....Minutes 0 (G) _____ P.S.I.
Final Hydrostatic Pressure.....(H) 1508 P.S.I.

DST #1 LKC H-H-J 3175-3235
Start Test Date: 2014/10/26
Final Test Date: 2014/10/27

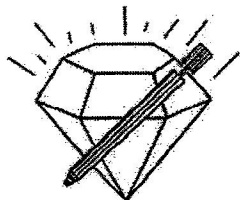
Stoltenberg-Svoboda 3-17

Stoltenberg-Svoboda 3-17
Formation: LKC H-H-J
Pool: Wildcat
Job Number: K1161



DATE 10-26-14 TEST NO. 101 RGE. 191 TWP. 17 SEC. 3-17 LEASE AND WELL NO. Stoltenberg-Svoboda No. 3-17

Bird Dog Oil, LLC ANYPWC



DIAMOND TESTING, LLC
P.O. Box 157
HOISINGTON, KANSAS 67544
(620) 653-7550 • (800) 542-7313
stolsv3dst2

Company Bird Dog Oil, LLC Lease & Well No. Stoltenberg-Svoboda No. 3-17
Elevation 1895 KB Formation Arbuckle Effective Pay _____ Ft. Ticket No. K190
Date 10-27-14 Sec. 17 Twp. 16S Range 10W County Ellsworth State Kansas
Test Approved By Adam Nighswonger Diamond Representative Jason McLemore

Formation Test No. 2 Interval Tested from 3,318 ft. to 3,378 ft. Total Depth 3,378 ft.
Packer Depth 3,313 ft. Size 6 3/4 in. Packer Depth _____ ft. Size _____ in.
Packer Depth 3,318 ft. Size 6 3/4 in. Packer Depth _____ ft. Size _____ in.
Depth of Selective Zone Set _____ ft.

Top Recorder Depth (Inside) 3,299 ft. Recorder Number 5513 Cap. 5,000 psi.
Bottom Recorder Depth (Outside) 3,300 ft. Recorder Number 5588 Cap. 6,000 psi.
Below Straddle Recorder Depth _____ ft. Recorder Number _____ Cap. _____ psi.

Drilling Contractor Southwind Drilling, Inc. - Rig 6 Drill Collar Length _____ ft. I.D. _____ in.
Mud Type Chemical Viscosity 66 Weight Pipe Length _____ ft. I.D. _____ in.
Weight 9.3 Water Loss 9.2 cc. Drill Pipe Length 3,286 ft. I.D. 3 1/2 in.
Chlorides 8,500 P.P.M. Test Tool Length 32 ft. Tool Size 3 1/2-IF in.
Jars: Make Sterling Serial Number 6 Anchor Length 29' perf. w/31' drill pipe Size 4 1/2-FH in.
Did Well Flow? No Reversed Out No Surface Choke Size 1 in. Bottom Choke Size 5/8 in.
Main Hole Size 7 7/8 in. Tool Joint Size 4 1/2-XH in.

Blow: 1st Open: Weak, surface blow. Died in 5 mins. No blow back during shut-in.
2nd Open: No blow. Flushed tool & received a surge. No blow. Pulled tool.

Recovered 6 ft. of drilling mud = .085380 bbls.
Recovered _____ ft. of _____
Recovered _____ ft. of _____
Recovered _____ ft. of _____
Recovered _____ ft. of _____
Recovered _____ ft. of _____

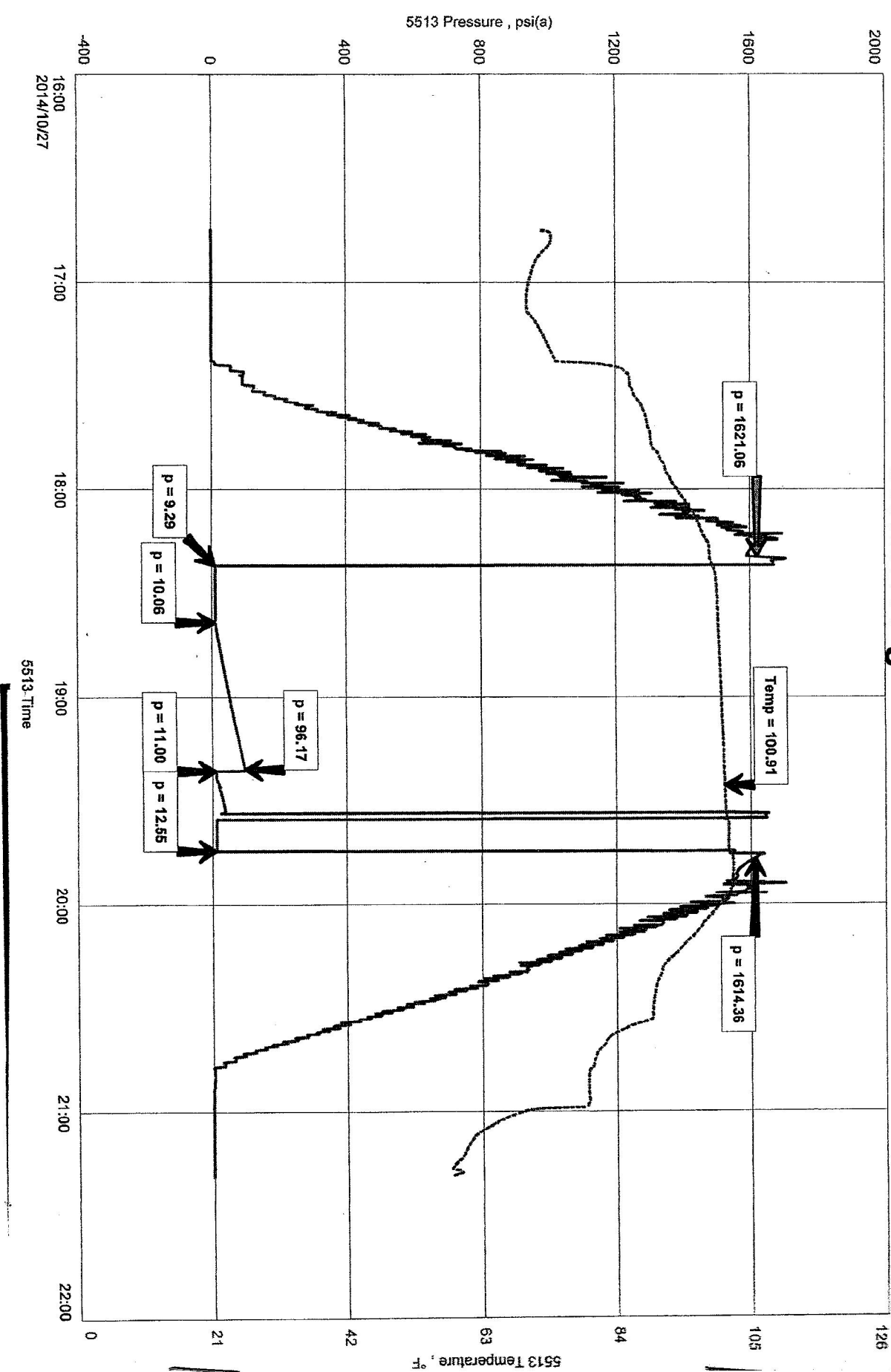
Remarks _____

Time Set Packer(s) 6:22 P.M. Time Started off Bottom 7:47 P.M. Maximum Temperature 101°
Initial Hydrostatic Pressure.....(A) 1621 P.S.I.
Initial Flow Period.....Minutes 15 (B) 9 P.S.I. to (C) 10 P.S.I.
Initial Closed In Period.....Minutes 45 (D) 96 P.S.I.
Final Flow Period.....Minutes 25 (E) 11 P.S.I. to (F) 13 P.S.I.
Final Closed In Period.....Minutes 0 (G) _____ P.S.I.
Final Hydrostatic Pressure.....(H) 1614 P.S.I.

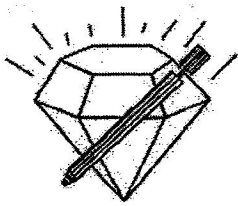
BIRD DOG OIL, LLC
 DST #2 Arbuckle 3318-3378
 Start Test Date: 2014/10/27
 Final Test Date: 2014/10/27

Stoltenberg-Svoboda 3-17

STOLTENBERG-SVOBODA 3-17
 Formation: Arbuckle
 Pool: Wildcat
 Job Number: K190



DATE 10-27-14 TEST NO. 2 WGT. 10W RGE. S91 TWP. 17 SEC. 3-17 LEASE AND WELL NO. Stoltenberg-Svoboda No. 3-17 COMPANY Bird Dog Oil, LLC



DIAMOND TESTING, LLC
P.O. Box 157
HOISINGTON, KANSAS 67544
(620) 653-7550 • (800) 542-7313
stolsv3dst3

Company Bird Dog Oil, LLC Lease & Well No. Stoltenberg-Svoboda No. 3-17
Elevation 1895 KB Formation Arbuckle Effective Pay _____ Ft. Ticket No. K191
Date 10-28-14 Sec. 17 Twp. 16S Range 10W County Ellsworth State Kansas
Test Approved By Adam Nighswonger Diamond Representative Jason McLemore

Formation Test No. 3 Interval Tested from 3,378 ft. to 3,388 ft. Total Depth 3,388 ft.
Packer Depth 3,373 ft. Size 6 3/4 in. Packer Depth _____ ft. Size _____ in.
Packer Depth 3,378 ft. Size 6 3/4 in. Packer Depth _____ ft. Size _____ in.
Depth of Selective Zone Set _____ ft.

Top Recorder Depth (Inside) 3,369 ft. Recorder Number 5513 Cap. 5,000 psi.
Bottom Recorder Depth (Outside) 3,370 ft. Recorder Number 5588 Cap. 6,000 psi.
Below Straddle Recorder Depth _____ ft. Recorder Number _____ Cap. _____ psi.

Drilling Contractor Southwind Drilling, Inc. - Rig 6 Drill Collar Length _____ ft I.D. _____ in.
Mud Type Chemical Viscosity 66 Weight Pipe Length _____ ft I.D. _____ in.
Weight 9.3 Water Loss 9.2 cc. Drill Pipe Length 3,346 ft I.D. 3 1/2 in.
Chlorides 8,500 P.P.M. Test Tool Length 32 ft Tool Size 3 1/2-IF in.
Jars: Make Sterling Serial Number 6 Anchor Length 10 ft. Size 4 1/2-FH in.
Did Well Flow? No Reversed Out No Surface Choke Size 1 in. Bottom Choke Size 5/8 in.
Main Hole Size 7 7/8 in. Tool Joint Size 4 1/2-XH in.

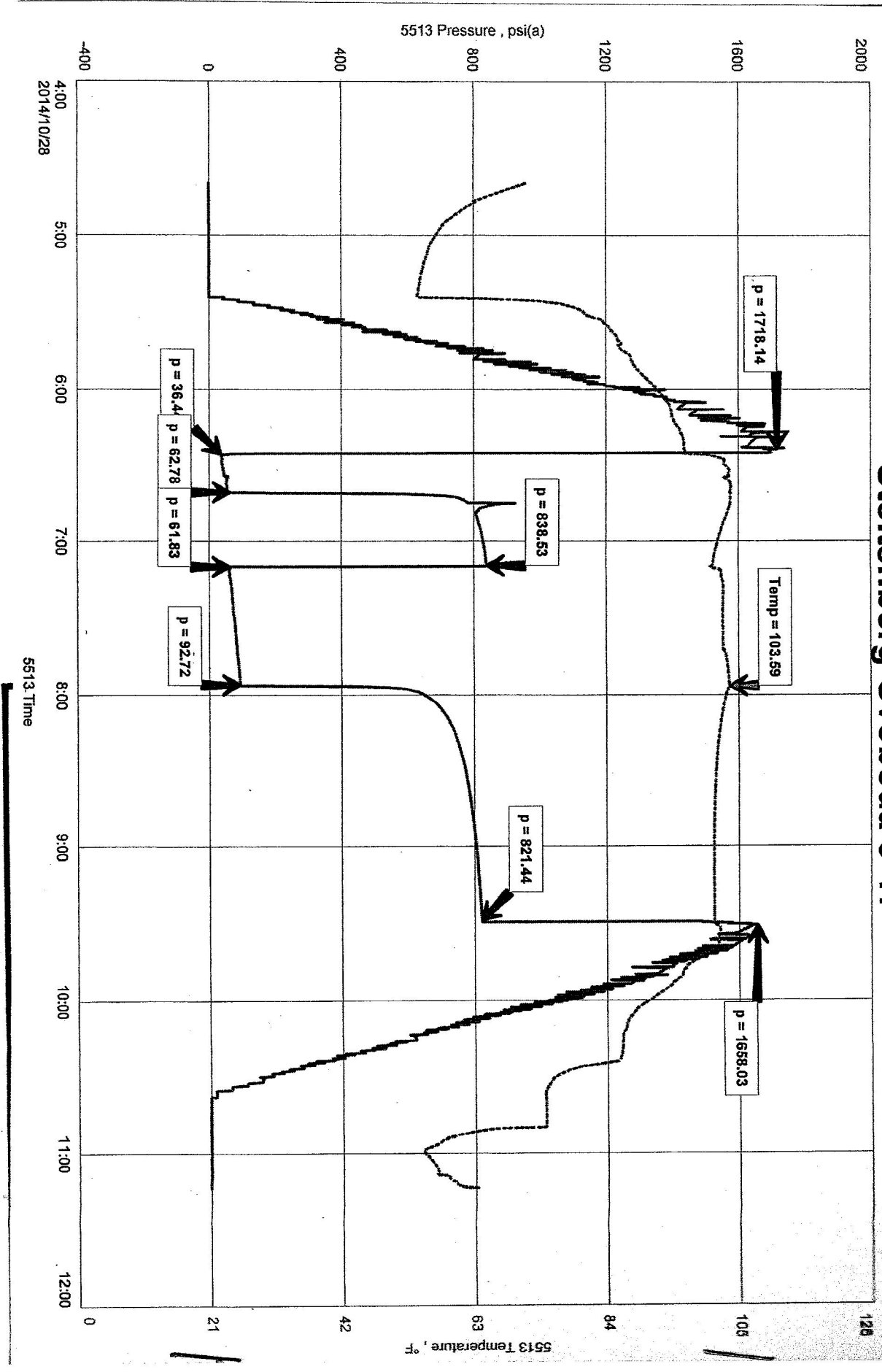
Blow: 1st Open: Fair blow increasing to 6 ins. No blow back during shut-in.
2nd Open: Strong blow increasing. Off bottom of bucket in 24 mins. No blow back during shut-in.

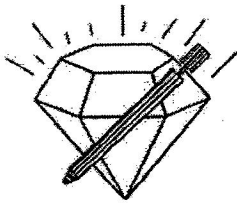
Recovered 60 ft. of gas in pipe
Recovered 70 ft. of free oil = .996100 bbls. (Gravity: 43 @ 60°)
Recovered 125 ft. of oil cut, watery mud = 1.778750 bbls. (Grind out: 15%-oil; 25%-water; 60%-mud) Chlorides: 15,000 Ppm PH: 7.0 RW: 1.0 @ 60°
Recovered 195 ft. of TOTAL FLUID = 2.774850 bbls.

Recovered _____ ft. of _____
Recovered _____ ft. of _____
Remarks Small spike in initial shut-in is from pulling slips.

Time Set Packer(s) 6:27 A.M. Time Started off Bottom 9:27 A.M. Maximum Temperature 104°
Initial Hydrostatic Pressure.....(A) 1718 P.S.I.
Initial Flow Period.....Minutes 15 (B) 36 P.S.I. to (C) 63 P.S.I.
Initial Closed In Period.....Minutes 30 (D) 839 P.S.I.
Final Flow Period.....Minutes 45 (E) 62 P.S.I. to (F) 93 P.S.I.
Final Closed In Period.....Minutes 90 (G) 821 P.S.I.
Final Hydrostatic Pressure.....(H) 1658 P.S.I.

Stoltenberg-Svoboda 3-17





DIAMOND TESTING, LLC
P.O. Box 157
HOISINGTON, KANSAS 67544
(620) 653-7550 • (800) 542-7313
stolsv3dst4

Company Bird Dog Oil, LLC Lease & Well No. Stoltenberg-Svoboda No. 3-17
Elevation 1895 KB Formation Arbuckle Effective Pay _____ Ft. Ticket No. K192
Date 10-28-14 Sec. 17 Twp. 16S Range 10W County Ellsworth State Kansas
Test Approved By Adam Nighswonger Diamond Representative Jason McLemore

Formation Test No. 4 Interval Tested from 3,388 ft. to 3,393 ft. Total Depth 3,393 ft.
Packer Depth 3,383 ft. Size 6 3/4 in. Packer Depth _____ ft. Size _____ in.
Packer Depth 3,388 ft. Size 6 3/4 in. Packer Depth _____ ft. Size _____ in.
Depth of Selective Zone Set _____ ft.

Top Recorder Depth (Inside) 3,369 ft. Recorder Number 5513 Cap. 5,000 psi.
Bottom Recorder Depth (Outside) 3,370 ft. Recorder Number 5588 Cap. 6,000 psi.
Below Straddle Recorder Depth _____ ft. Recorder Number _____ Cap. _____ psi.

Drilling Contractor Southwind Drilling, Inc. - Rig 6 Drill Collar Length _____ ft. I.D. _____ in.
Mud Type Chemical Viscosity 54 Weight Pipe Length _____ ft. I.D. _____ in.
Weight 9.4 Water Loss 9.2 cc. Drill Pipe Length 3,356 ft. I.D. 3 1/2 in.
Chlorides 8,100 P.P.M. Test Tool Length 32 ft. Tool Size 3 1/2-IF in.
Jars: Make Sterling Serial Number 6 Anchor Length 5 ft. Size 4 1/2-FH in.
Did Well Flow? No Reversed Out No Surface Choke Size 1 in. Bottom Choke Size 5/8 in.
Main Hole Size 7 7/8 in. Tool Joint Size 4 1/2-XH in.

Blow: 1st Open: Fair blow increasing to 6 ins. No blow back during shut-in.
2nd Open: Fair blow increasing. Off bottom of bucket in 41 mins. Weak, 1/4 in. blow back during shut-in.

Recovered 30 ft. of gas in pipe
Recovered 45 ft. of free oil = .640350 bbls. (Gravity: 43 @ 60°)
Recovered 75 ft. of very slightly oil cut, muddy water = 1.067250 bbls. (Grind out: 3%-oil; 90%-water; 7%-mud)
Recovered 120 ft. of TOTAL FLUID = 1.707600 bbls. Chlorides: 16,000 Ppm PH: 7.0 RW: .90 @ 46°
Recovered _____ ft. of _____
Recovered _____ ft. of _____

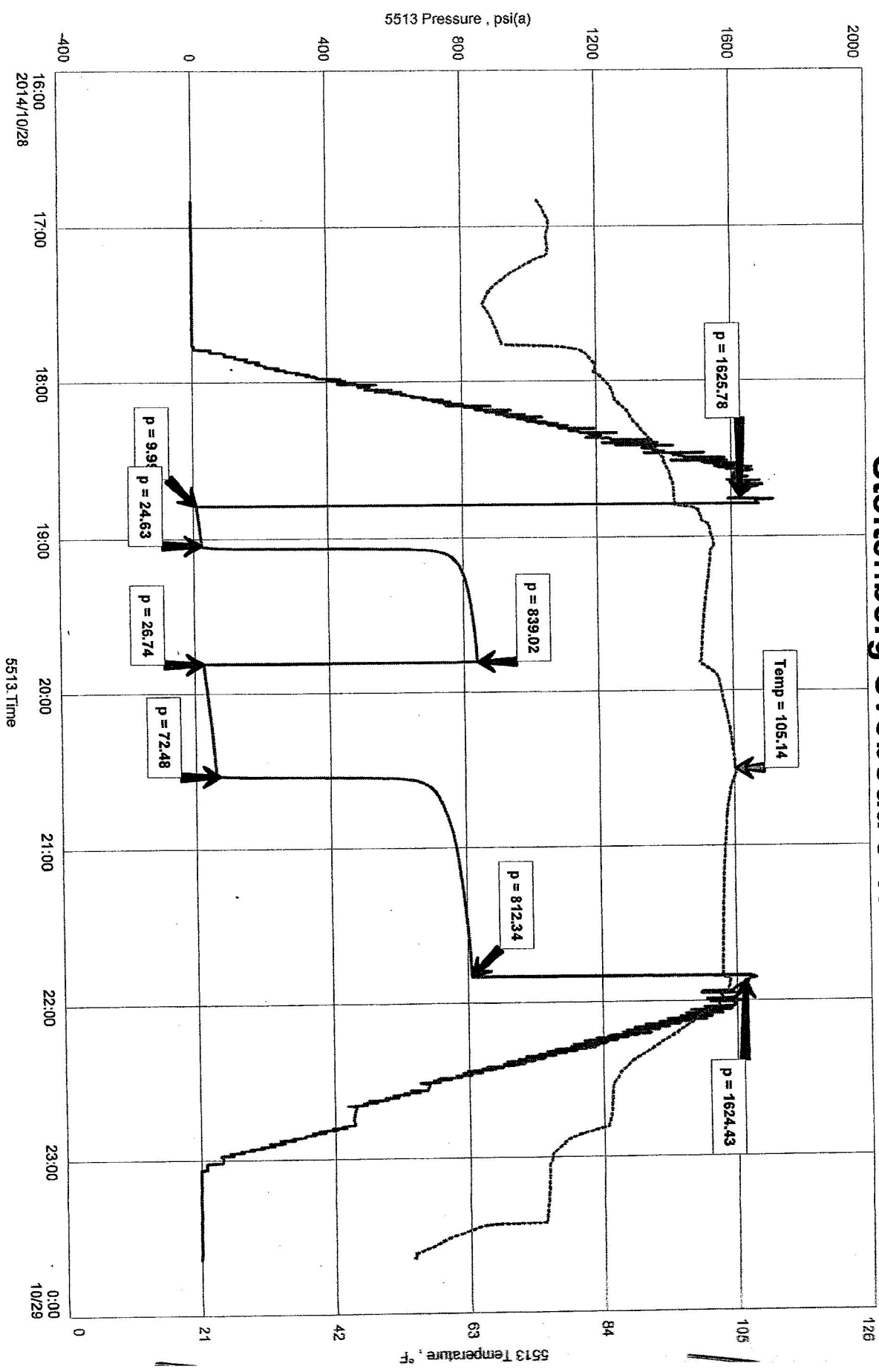
Remarks _____

Time Set Packer(s) 6:48 P.M. Time Started off Bottom 9:48 P.M. Maximum Temperature 105°
Initial Hydrostatic Pressure.....(A) 1626 P.S.I.
Initial Flow Period.....Minutes 15 (B) 10 P.S.I. to (C) 25 P.S.I.
Initial Closed In Period.....Minutes 30 (D) 839 P.S.I.
Final Flow Period.....Minutes 45 (E) 27 P.S.I. to (F) 72 P.S.I.
Final Closed In Period.....Minutes 90 (G) 812 P.S.I.
Final Hydrostatic Pressure.....(H) 1624 P.S.I.

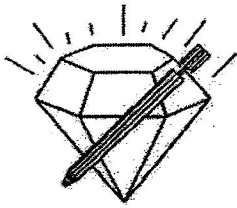
Bird Dog Oil, LLC
 DST #4 Arbuckle 3388-3393
 Start Test Date: 2014/10/28
 Final Test Date: 2014/10/28

Stoltenberg-Svoboda 3-17

Stoltenberg-Svoboda 3-17
 Formation: Arbuckle
 Pool: Wildcat
 Job Number: K192



41-28-28-01 DATE TEST NO. 7 WOI RGE. 16S TWP. 71 SEC. 3-17 ON T1E1W 1N1W 34E1T
 Bird Dog Oil, LLC



DIAMOND TESTING, LLC
P.O. Box 157
HOISINGTON, KANSAS 67544
(620) 653-7550 • (800) 542-7313
stolsv3dst5

Company Bird Dog Oil, LLC Lease & Well No. Stoltenberg-Svoboda No. 3-17
Elevation 1895 KB Formation Arbuckle Effective Pay _____ Ft. Ticket No. K193
Date 10-29-14 Sec. 17 Twp. 16S Range 10W County Ellsworth State Kansas
Test Approved By Adam Nighswonger Diamond Representative Jason McLemore

Formation Test No. 5 Interval Tested from 3,393 ft. to 3,399 ft. Total Depth 3,399 ft.
Packer Depth 3,388 ft. Size 6 3/4 in. Packer Depth _____ ft. Size _____ in.
Packer Depth 3,393 ft. Size 6 3/4 in. Packer Depth _____ ft. Size _____ in.
Depth of Selective Zone Set _____ ft.

Top Recorder Depth (Inside) 3,374 ft. Recorder Number 5513 Cap. 5,000 psi.
Bottom Recorder Depth (Outside) 3,375 ft. Recorder Number 5588 Cap. 6,000 psi.
Below Straddle Recorder Depth _____ ft. Recorder Number _____ Cap. _____ psi.

Drilling Contractor Southwind Drilling, Inc. - Rig 6 Drill Collar Length _____ ft. I.D. _____ in.
Mud Type Chemical Viscosity 56 Weight Pipe Length _____ ft. I.D. _____ in.
Weight 9.2 Water Loss 9.6 cc. Drill Pipe Length 3,361 ft. I.D. 3 1/2 in.
Chlorides 9,100 P.P.M. Test Tool Length 32 ft. Tool Size 3 1/2-IF in.
Jars: Make Sterling Serial Number 6 Anchor Length 6 ft. Size 4 1/2-FH in.
Did Well Flow? No Reversed Out No Surface Choke Size 1 in. Bottom Choke Size 5/8 in.
Main Hole Size 7 7/8 in. Tool Joint Size 4 1/2-XH in.

Blow: 1st Open: Weak blow increasing to 4 1/2 ins. No blow back during shut-in.
2nd Open: Weak blow increasing to 6 ins. No blow back during shut-in.

Recovered 1 ft. of free oil = .014230 bbls.
Recovered 75 ft. of muddy water = 1.067250 bbls. (Grind out: 95%-water; 5%-mud) Chlorides: 12,000 Ppm PH: 7.0 RW: 1.0 @ 40°
Recovered 76 ft. of TOTAL FLUID = 1.081480 bbls.
Recovered _____ ft. of _____
Recovered _____ ft. of _____
Recovered _____ ft. of _____

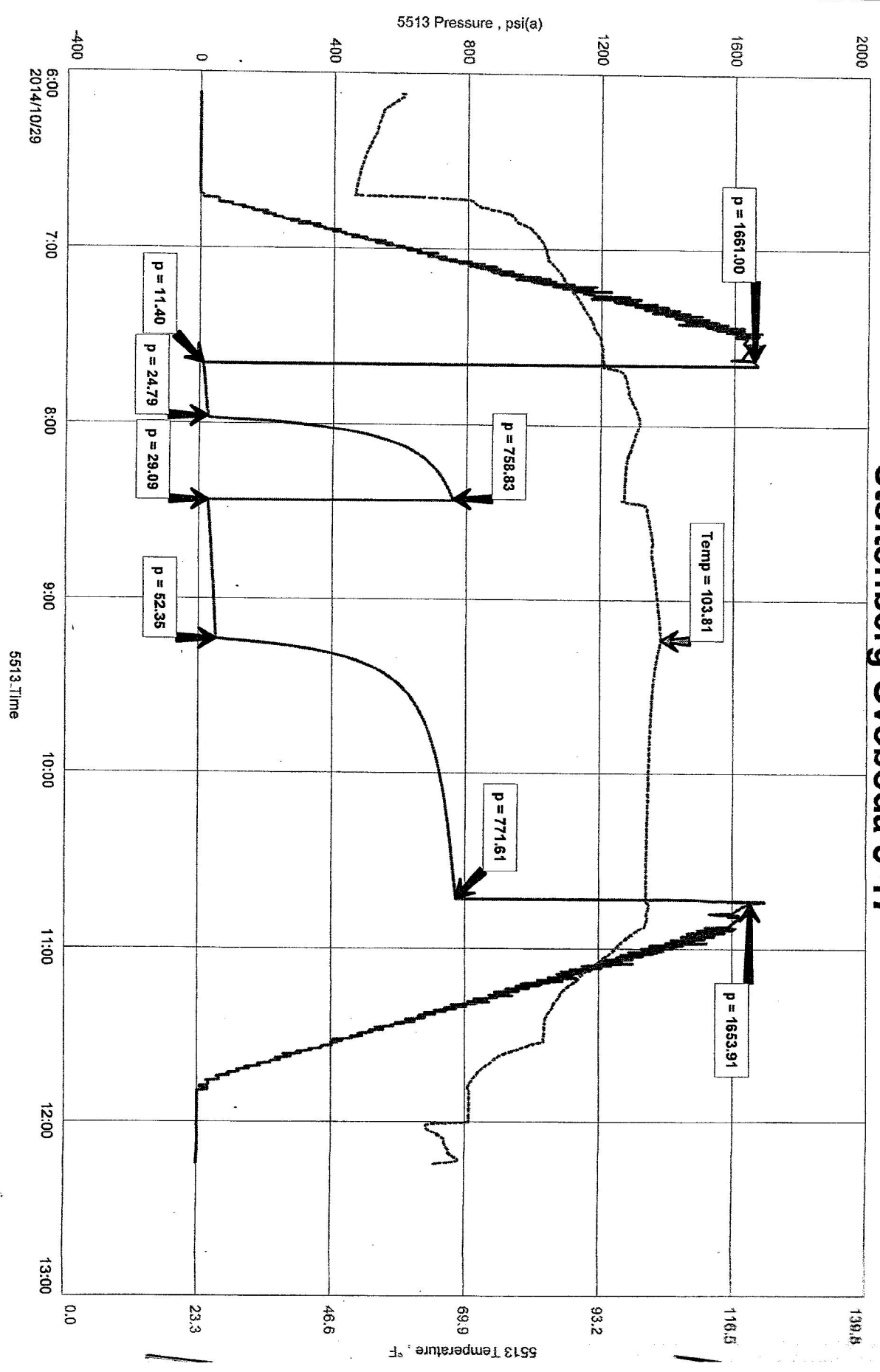
Remarks _____

Time Set Packer(s) 7:41 A.M. Time Started off Bottom 10:41 A.M. Maximum Temperature 104°
Initial Hydrostatic Pressure.....(A) 1661 P.S.I.
Initial Flow Period.....Minutes 15 (B) 11 P.S.I. to (C) 25 P.S.I.
Initial Closed In Period.....Minutes 30 (D) 759 P.S.I.
Final Flow Period.....Minutes 45 (E) 29 P.S.I. to (F) 52 P.S.I.
Final Closed In Period.....Minutes 90 (G) 772 P.S.I.
Final Hydrostatic Pressure.....(H) 1654 P.S.I.

Bird Dog Oil, LLC
 DST #5 Arbuckle 3393-3399
 Start Test Date: 2014/10/29
 Final Test Date: 2014/10/29

Stoltenberg-Svoboda 3-17

Stoltenberg-Svoboda 3-17
 Formation: Arbuckle
 Pool: Wildcat
 Job Number: K19



71-62-10 DATE 5 TEST NO. 501 RGE. TWP. 17 SEC. 3-17 ON TELL AND WELL DNV EASL LEASE AND WELL DNV EASL CTT 'TIO' pifg YANVDMK