

DIAMOND TESTING, LLC
 P.O. Box 157
HOISINGTON, KANSAS 67544
 (620) 653-7550 • (800) 542-7313
 PIONEER-SCHU4-23DST1

Company Bird Dog Oil, LLC Lease & Well No. Pioneer-Schubert No. 4-23
 Elevation 1748 KB Formation Douglas Sandstone Effective Pay _____ Ft. Ticket No. A135
 Date 12-15-14 Sec. 23 Twp. 19S Range 10W County Rice State Kansas
 Test Approved By Adam Nighswonger Diamond Representative Andy Carreira

Formation Test No. 1 Interval Tested from 2,834 ft. to 2,872 ft. Total Depth 2,872 ft.
 Packer Depth 2,829 ft. Size 6 3/4 in. Packer Depth _____ ft. Size _____ in.
 Packer Depth 2,834 ft. Size 6 3/4 in. Packer Depth _____ ft. Size _____ in.
 Depth of Selective Zone Set _____ ft.

Top Recorder Depth (Inside) 2,815 ft. Recorder Number 5585 Cap. 5,000 psi.
 Bottom Recorder Depth (Outside) 2,836 ft. Recorder Number 8471 Cap. 10,000 psi.
 Below Straddle Recorder Depth _____ ft. Recorder Number _____ Cap. _____ psi.

Drilling Contractor Southwind Drilling, Inc. - Rig 6 Drill Collar Length _____ ft I.D. _____ in.
 Mud Type Chemical Viscosity 50 Weight Pipe Length _____ ft I.D. _____ in.
 Weight 9.1 Water Loss 8.0 cc. Drill Pipe Length 2,802 ft I.D. 3 1/2 in.
 Chlorides 7,500 P.P.M. Test Tool Length 32 ft Tool Size 3 1/2-IF in.
 Jars: Make Sterling Serial Number 9 Anchor Length 38 ft. Size 4 1/2-FH in.
 Did Well Flow? No Reversed Out No Surface Choke Size 1 in. Bottom Choke Size 5/8 in.
 Main Hole Size 7 7/8 in. Tool Joint Size 4 1/2-XH in.

Blow: 1st Open: Weak, surface blow. No blow back during shut-in.

2nd Open: No blow. Flushed tool. Surged. Received a weak, surface blow that died in 5 mins. No blow back during shut-in.

Recovered 15 ft. of mud = .213450 bbls.
 Recovered _____ ft. of _____
 Recovered _____ ft. of _____
 Recovered _____ ft. of _____
 Recovered _____ ft. of _____
 Recovered _____ ft. of _____

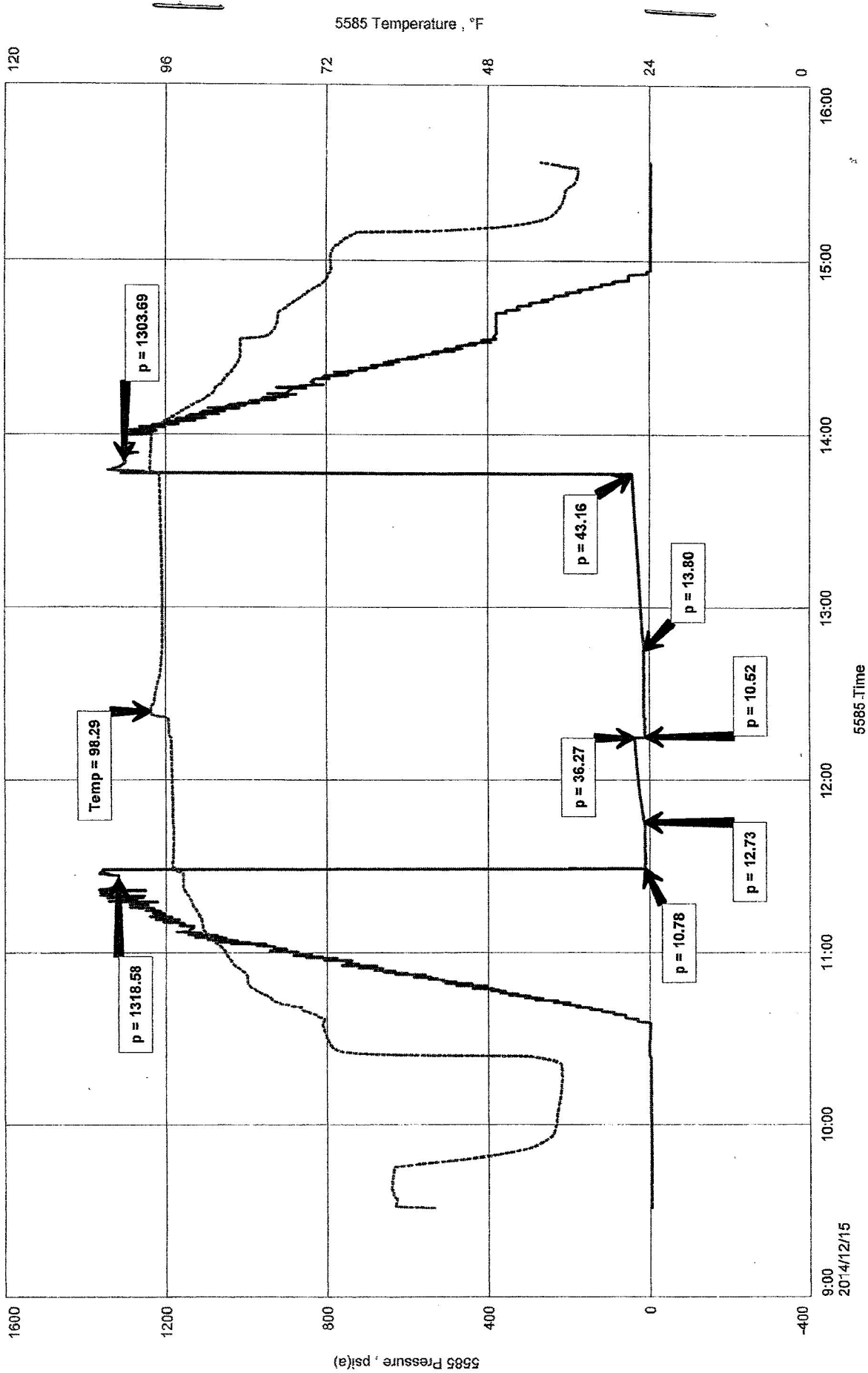
Remarks Tool Sample Grind Out: 100%-mud

Time Set Packer(s) 11:30 A.M. Time Started off Bottom 1:45 P.M. Maximum Temperature 98°
 Initial Hydrostatic Pressure.....(A) 1319 P.S.I.
 Initial Flow Period.....Minutes 15 (B) 11 P.S.I. to (C) 13 P.S.I.
 Initial Closed In Period.....Minutes 30 (D) 36 P.S.I.
 Final Flow Period.....Minutes 30 (E) 11 P.S.I. to (F) 14 P.S.I.
 Final Closed In Period.....Minutes 60 (G) 43 P.S.I.
 Final Hydrostatic Pressure.....(H) 1304 P.S.I.

BIRD DOG OIL, LLC
 DST 1 DOUGLAS SANDSTONE 2834-2872
 Start Test Date: 2014/12/15
 Final Test Date: 2014/12/15

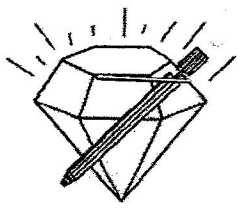
PIONEER-SCHUBERT 4-23
 Formation: DST 1 DOUGLAS SANDSTONE 2834-2872
 Pool: WILDCAT
 Job Number: A135

PIONEER-SCHUBERT 4-23



5585 Temperature, °F

5585 Pressure, psia



DIAMOND TESTING, LLC
P.O. Box 157
HOISINGTON, KANSAS 67544
(620) 653-7550 • (800) 542-7313
PIONEER-SCHU4-23DST2

Company Bird Dog Oil, LLC Lease & Well No. Pioneer-Schubert No. 4-23
Elevation 1748 KB Formation Arbuckle Effective Pay _____ Ft. Ticket No. A136
Date 12-17-14 Sec. 23 Twp. 19S Range 10W County Rice State Kansas
Test Approved By Adam Nighswonger Diamond Representative Andy Carreira

Formation Test No. 2 Interval Tested from 3,205 ft. to 3,279 ft. Total Depth 3,279 ft.
Packer Depth 3,200 ft. Size 6 3/4 in. Packer Depth _____ ft. Size _____ in.
Packer Depth 3,205 ft. Size 6 3/4 in. Packer Depth _____ ft. Size _____ in.
Depth of Selective Zone Set _____ ft.

Top Recorder Depth (Inside) 3,186 ft. Recorder Number 5585 Cap. 5,000 psi.
Bottom Recorder Depth (Outside) 3,207 ft. Recorder Number 8471 Cap. 10,000 psi.
Below Straddle Recorder Depth _____ ft. Recorder Number _____ Cap. _____ psi.

Drilling Contractor Southwind Drilling, Inc. - Rig 6 Drill Collar Length _____ ft. I.D. _____ in.
Mud Type Chemical Viscosity 55 Weight Pipe Length _____ ft. I.D. _____ in.
Weight 9.5 Water Loss 9.2 cc. Drill Pipe Length 3,170 ft. I.D. 3 1/2 in.
Chlorides 8,500 P.P.M. Test Tool Length 35 ft. Tool Size 3 1/2-IF in.
Jars: Make Sterling Serial Number 9 Anchor Length 74 ft. Size 4 1/2-FH in.
Did Well Flow? No Reversed Out No Surface Choke Size 1 in. Bottom Choke Size 5/8 in.
Main Hole Size 7 7/8 in. Tool Joint Size 4 1/2-XH in.

Blow: 1st Open: Weak, surface blow. No blow back during shut-in.
2nd Open: No blow. No blow back during shut-in.

Recovered 10 ft. of mud = .142300 bbls.
Recovered _____ ft. of _____
Recovered _____ ft. of _____
Recovered _____ ft. of _____
Recovered _____ ft. of _____
Recovered _____ ft. of _____

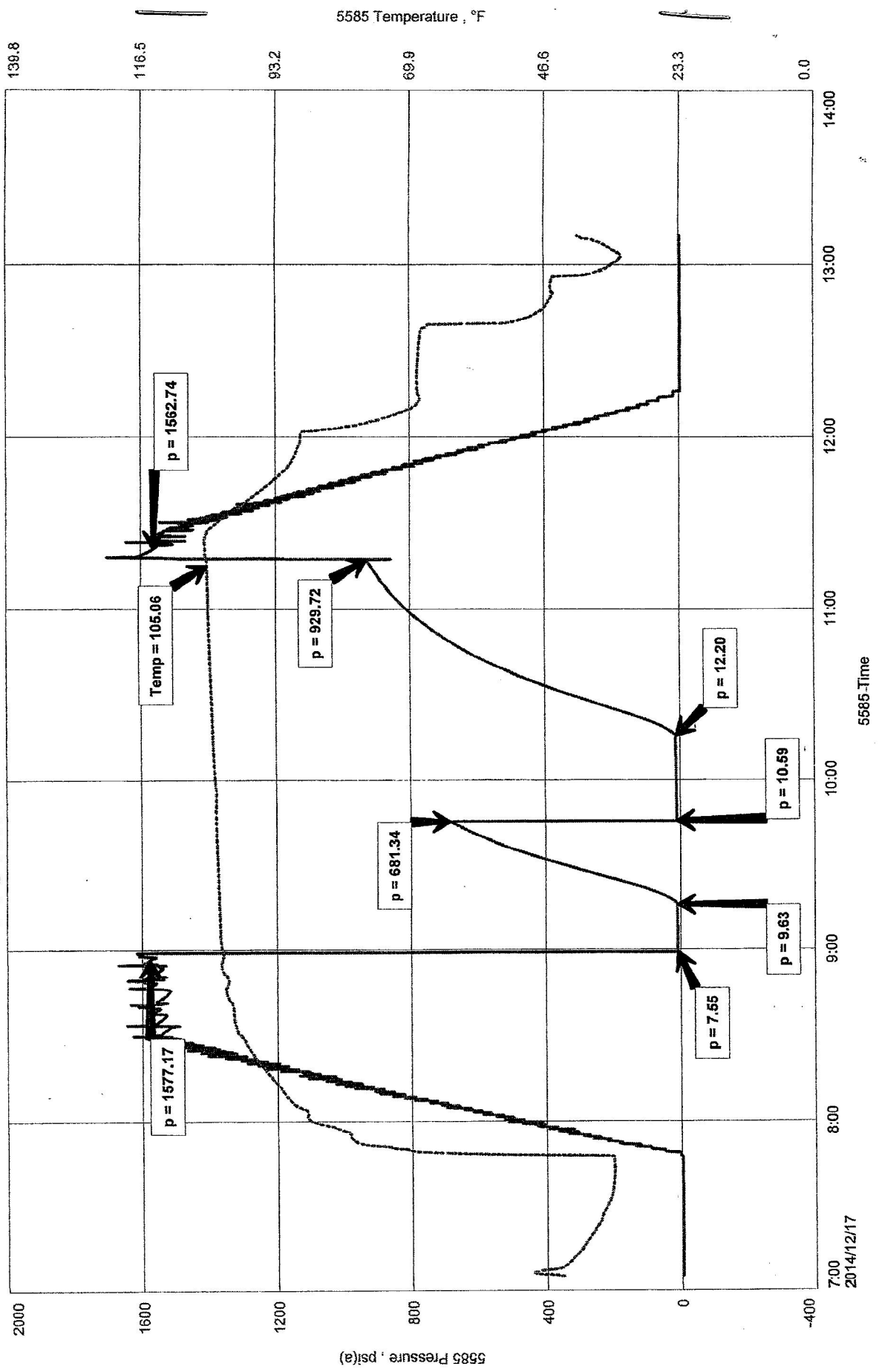
Remarks Tool Sample Grind Out: 100%-mud
Sampler Grind Out: Pressure = 30 lbs 4,000 ml-mud

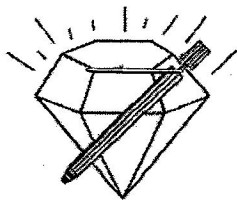
Time Set Packer(s) 9:00 A.M. Time Started off Bottom 11:15 A.M. Maximum Temperature 105°
Initial Hydrostatic Pressure.....(A) 1577 P.S.I.
Initial Flow Period.....Minutes 15 (B) 8 P.S.I. to (C) 10 P.S.I.
Initial Closed In Period.....Minutes 30 (D) 681 P.S.I.
Final Flow Period.....Minutes 30 (E) 11 P.S.I. to (F) 12 P.S.I.
Final Closed In Period.....Minutes 60 (G) 930 P.S.I.
Final Hydrostatic Pressure.....(H) 1563 P.S.I.

PIONEER-SCHUBERT 4-23
Formation: DST 2 ARBUCKLE 3205-3279
Pool: WILDCAT
Job Number: A136

BIRD DOG OIL, LLC
DST 2 ARBUCKLE 3205-3279
Start Test Date: 2014/12/17
Final Test Date: 2014/12/17

PIONEER-SCHUBERT 4-23





DIAMOND TESTING, LLC
P.O. Box 157
HOISINGTON, KANSAS 67544
(620) 653-7550 • (800) 542-7313
PIONEER-SCHU4-23DST3

Company Bird Dog Oil, LLC Lease & Well No. Pioneer-Schubert No. 4-23
Elevation 1748 KB Formation Arbuckle Effective Pay _____ Ft. Ticket No. A137
Date 12-17-14 Sec. 23 Twp. 19S Range 10W County Rice State Kansas
Test Approved By Adam Nighswonger Diamond Representative Andy Carreira

Formation Test No. 3 Interval Tested from 3,279 ft. to 3,285 ft. Total Depth 3,285 ft.
Packer Depth 3,274 ft. Size 6 3/4 in. Packer Depth _____ ft. Size _____ in.
Packer Depth 3,279 ft. Size 6 3/4 in. Packer Depth _____ ft. Size _____ in.
Depth of Selective Zone Set _____ ft.

Top Recorder Depth (Inside) 3,260 ft. Recorder Number 5585 Cap. 5,000 psi.
Bottom Recorder Depth (Outside) 3,281 ft. Recorder Number 8471 Cap. 10,000 psi.
Below Straddle Recorder Depth _____ ft. Recorder Number _____ Cap. _____ psi.

Drilling Contractor Southwind Drilling, Inc. - Rig 6 Drill Collar Length _____ ft. I.D. _____ in.
Mud Type Chemical Viscosity 55 Weight Pipe Length _____ ft. I.D. _____ in.
Weight 9.5 Water Loss 9.2 cc. Drill Pipe Length 3,244 ft. I.D. 3 1/2 in.
Chlorides 8,500 P.P.M. Test Tool Length 35 ft. Tool Size 3 1/2-IF in.
Jars: Make Sterling Serial Number 9 Anchor Length 6 ft. Size 4 1/2-FH in.
Did Well Flow? No Reversed Out No Surface Choke Size 1 in. Bottom Choke Size 5/8 in.
Main Hole Size 7 7/8 in. Tool Joint Size 4 1/2-XH in.

Blow: 1st Open: Strong blow increasing. Off bottom of bucket in 8 mins. 1 in. blow back during shut-in.
2nd Open: Strong blow increasing. Off bottom of bucket in 6 mins. Bottom of bucket blow back in 26 mins. during shut-in.

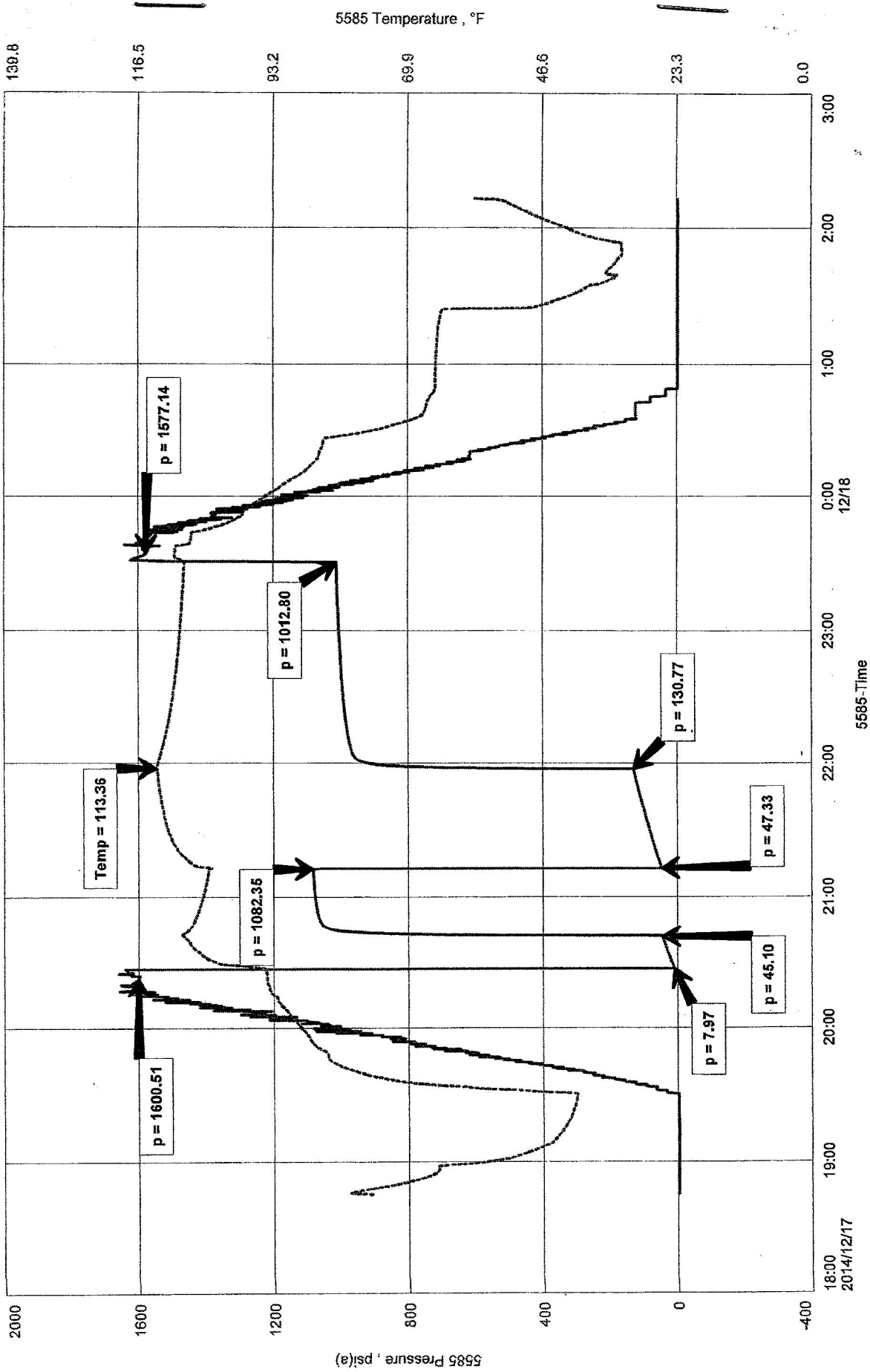
Recovered 912 ft. of gas in pipe
Recovered 30 ft. of clean gassy oil = .426900 bbls. (Grind out: 15%-gas; 85%-oil) Gravity: 48
Recovered 63 ft. of mud cut gassy oil = .896490 bbls. (Grind out: 10%-gas; 65%-oil; 25%-mud)
Recovered 189 ft. of water = 2.689470 bbls. (Grind out: 100%-water) Chlorides: 13,000 Ppm PH: 6.0 RW: .61 @ 60°
Recovered 282 ft. of TOTAL FLUID = 4.012860 bbls.
Recovered _____ ft. of _____
Remarks Tool Sample Grind Out: 20%-oil; 80%-water
Sampler Grind Out: Pressure = 80 lbs 1,800 ml-gas; 700 ml-oil; 1,500 ml-water

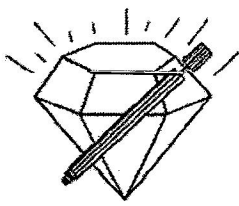
Time Set Packer(s) 8:27 P.M. Time Started off Bottom 11:27 P.M. Maximum Temperature 113°
Initial Hydrostatic Pressure.....(A) _____ P.S.I.
Initial Flow Period.....Minutes 15 (B) _____ P.S.I. to (C) _____ P.S.I.
Initial Closed In Period.....Minutes 30 (D) _____ P.S.I.
Final Flow Period.....Minutes 45 (E) _____ P.S.I. to (F) _____ P.S.I.
Final Closed In Period.....Minutes 90 (G) _____ P.S.I.
Final Hydrostatic Pressure.....(H) _____ P.S.I.

BIRD DOG OIL, LLC
 DST 3 ARBUCKLE 3279-3285
 Start Test Date: 2014/12/17
 Final Test Date: 2014/12/18

PIONEER-SCHUBERT 4-23
 Formation: DST 3 ARBUCKLE 3279-3285
 Pool: WILDCAT
 Job Number: A137

PIONEER-SCHUBERT 4-23





DIAMOND TESTING, LLC
P.O. Box 157
HOISINGTON, KANSAS 67544
(620) 653-7550 • (800) 542-7313
PIONEER-SCHU4-23DST4

Company Bird Dog Oil, LLC Lease & Well No. Pioneer-Schubert No. 4-23
Elevation 1748 KB Formation Arbuckle Effective Pay _____ Ft. Ticket No. A138
Date 12-18-14 Sec. 23 Twp. 19S Range 10W County Rice State Kansas
Test Approved By Adam Nighswonger Diamond Representative Andy Carreira

Formation Test No. 4 Interval Tested from 3,285 ft. to 3,290 ft. Total Depth 3,290 ft.
Packer Depth 3,280 ft. Size 6 3/4 in. Packer Depth _____ ft. Size _____ in.
Packer Depth 3,285 ft. Size 6 3/4 in. Packer Depth _____ ft. Size _____ in.
Depth of Selective Zone Set _____ ft.

Top Recorder Depth (Inside) 3,266 ft. Recorder Number 5585 Cap. 5,000 psi.
Bottom Recorder Depth (Outside) 3,287 ft. Recorder Number 8471 Cap. 10,000 psi.
Below Straddle Recorder Depth _____ ft. Recorder Number _____ Cap. _____ psi.

Drilling Contractor Southwind Drilling, Inc. - Rig 6 Drill Collar Length _____ ft I.D. _____ in.
Mud Type Chemical Viscosity 55 Weight Pipe Length _____ ft I.D. _____ in.
Weight 9.5 Water Loss 9.2 cc. Drill Pipe Length 3,250 ft I.D. 3 1/2 in.
Chlorides 8,500 P.P.M. Test Tool Length 35 ft Tool Size 3 1/2-IF in.
Jars: Make Sterling Serial Number 9 Anchor Length 5 ft. Size 4 1/2-FH in.
Did Well Flow? No Reversed Out No Surface Choke Size 1 in. Bottom Choke Size 5/8 in.
Main Hole Size 7 7/8 in. Tool Joint Size 4 1/2-XH in.

Blow: 1st Open: Strong blow increasing. Off bottom of bucket in 6 mins. No blow back during shut-in.

2nd Open: Strong blow increasing. Off bottom of bucket in 10 mins. No blow back during shut-in.

Recovered 524 ft. of water = 7.456520 bbls. (Chlorides: 13,000 Ppm PH: 6.0 RW: .61 @ 60°)

Recovered _____ ft. of _____
Recovered _____ ft. of _____
Recovered _____ ft. of _____
Recovered _____ ft. of _____
Recovered _____ ft. of _____

Remarks Tool Sample Grind Out: 100%-water
Sampler Grind Out: Pressure = 125 lbs 4,000 ml-water

Time Set Packer(s) 1:25 P.M. Time Started off Bottom 4:25 P.M. Maximum Temperature 114°
Initial Hydrostatic Pressure.....(A) 1620 P.S.I.
Initial Flow Period.....Minutes 15 (B) 19 P.S.I. to (C) 83 P.S.I.
Initial Closed In Period.....Minutes 30 (D) 1000 P.S.I.
Final Flow Period.....Minutes 45 (E) 85 P.S.I. to (F) 237 P.S.I.
Final Closed In Period.....Minutes 90 (G) 890 P.S.I.
Final Hydrostatic Pressure.....(H) 1582 P.S.I.

BIRD DOG OIL, LLC
 DST 4 ARBUCKLE 3285-3290
 Start Test Date: 2014/12/18
 Final Test Date: 2014/12/18

PIONEER-SCHUBERT 4-23
 Formation: DST 4 ARBUCKLE 3285-3290
 Pool: WILDCAT
 Job Number: A138

PIONEER-SCHUBERT 4-23

