

TRILOBITE TESTING INC.

1515 Commerce Parkway • Hays, Kansas 67601

Test Ticket

NO. 61160

Well Name & No. Staab Shotts #1 Test No. 1 Date 4/13/15
 Company Staab Oil Co. Elevation 2140 KB 2135 GL
 Address 1607 Aspenell Rd. Hays, KS 67601
 Co. Rep / Geo. Janel Staab Rig Shields
 Location: Sec. 5 Twp. 12 S Rge. 17 W Co. E/115 State KS

Interval Tested 3376-3420 Zone Tested LKC "C+D"
 Anchor Length 44' Drill Pipe Run 2922 Mud Wt. 8.8
 Top Packer Depth 3371 Drill Collars Run --- Vis 53
 Bottom Packer Depth 3376 Wt. Pipe Run 465 WL 6.0
 Total Depth 3420 Chlorides 3800 ppm System LCM 3#

Blow Description IF - slowly built to 1/4"
ISI - No blow
FF - No blow pulled tool
FSI -

Rec	Feet of	%gas	%oil	%water	%mud
<u>5</u>	<u>M</u>				
Rec	Feet of	%gas	%oil	%water	%mud
Rec	Feet of	%gas	%oil	%water	%mud
Rec	Feet of	%gas	%oil	%water	%mud

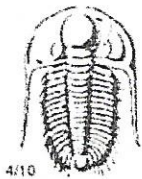
Rec Total 5' BHT 95° Gravity --- API RW ---@ --- F Chlorides --- ppm

(A) Initial Hydrostatic 1705 Test 1050 T-On Location 0450
 (B) First Initial Flow 31 Jars --- T-Started 0546
 (C) First Final Flow 32 Safety Joint --- T-Open 0422
 (D) Initial Shut-In 423 Circ Sub --- T-Pulled 1037
 (E) Second Initial Flow 33 Hourly Standby --- T-Out 1155
 (F) Second Final Flow 34 Mileage 36 RT ³⁶ Comments ---
 (G) Final Shut-In --- Sampler ---
 (H) Final Hydrostatic 1666 Straddle --- Ruined Shale Packer ---

Initial Open 5 Shale Packer --- Ruined Packer ---
 Initial Shut-In 60 Extra Packer --- Extra Copies ---
 Final Flow 10 ↑ Extra Recorder --- Sub Total 0
 Final Shut-In --- Day Standby --- Total 1086
 Accessibility --- MP/DST Disc't ---
 Sub Total 1086

Approved By: _____ Our Representative Branwan Lonsdale

TriLOBITE Testing Inc. shall not be liable for damaged of any kind of the property or personnel of the one for whom a test is made, or for any loss suffered or sustained, directly or indirectly, through the use of its equipment, or its statements or opinion concerning the results of any test, tools lost or damaged in the hole shall be paid for at cost by the party for whom the test is made.



TRILOBITE TESTING INC.

1515 Commerce Parkway • Hays, Kansas 67601

Test Ticket

NO. 61167

Well Name & No. Staab Shalts #1 Test No. 2 Date 4/14/15
 Company Staab Oil Co. Elevation 2140 KB 2135 GL
 Address 1607 Hornell Rd. Hays, KS 67601
 Co. Rep / Geo. Janel Staab Rig Shields
 Location: Sec. 5 Twp. 12 S Rge. 17 W Co. Ellis State KS

Interval Tested 3590 - 3635 Zone Tested Arbuckle
 Anchor Length 45' Tail 67' Drill Pipe Run 3176 Mud Wt. 9.5
 Top Packer Depth 3585 - 3590 Drill Collars Run --- Vis 55
 Bottom Packer Depth 3635 Wt. Pipe Run 403 WL 6.0
 Total Depth 3702 Chlorides 3,600 ppm System LCM 2#
 Blow Description RF - 2.5 inches steady build
ISI - No blow
FF - slowly built to 6"
FSI - No blow

Rec	Feet of	%gas	%oil	%water	%mud
<u>30</u>	<u>MW</u>			<u>75</u>	<u>25</u>
<u>110</u>	<u>SOCM</u>		<u>10</u>		<u>90</u>
<u>15</u>	<u>SWMCO</u>		<u>50</u>	<u>10</u>	<u>40</u>

Rec Total 155' BHT 106° Gravity 35 API RW .36 @ 52° F Chlorides 35,200 ppm
 (A) Initial Hydrostatic 1822 Test 1050 T-On Location 1545
 (B) First Initial Flow 40 Jars --- T-Started 1614
 (C) First Final Flow 54 Safety Joint --- T-Open 1746
 (D) Initial Shut-In 422 Circ Sub --- T-Pulled 2119
 (E) Second Initial Flow 56 Hourly Standby --- T-Out 2258
 (F) Second Final Flow 101 Mileage 36 RT 36 Comments ---
 (G) Final Shut-In 337 Sampler ---
 (H) Final Hydrostatic 1791 Straddle 600 Ruined Shale Packer ---
 Shale Packer 250 Ruined Packer ---
 Extra Packer --- Extra Copies ---
 Extra Recorder --- Sub Total 0
 Day Standby --- Total 1936
 Accessibility --- MP/DST Disc't ---
 Sub Total 1936

Approved By _____ Our Representative Bannon Lonsdale
 TriLOBITE Testing Inc. shall not be liable for damaged of any kind of the property or personnel of the one for whom a test is made, or for any loss suffered or sustained, directly or indirectly, through the use of its equipment, or its statements or opinion concerning the results of any test, tools lost or damaged in the hole shall be paid for at cost by the party for whom the test is made.