



TRILOBITE TESTING, INC.

DRILL STEM TEST REPORT

Gulf Exploration
 9701 N. Broadw ay Extension
 Oklahoma City, OK 73114
 ATTN: Mike Madcharo

3/7S/36W
Goetsch #1-3
 Job Ticket: 62582 **DST#: 5**
 Test Start: 2015.06.03 @ 09:29:00

GENERAL INFORMATION:

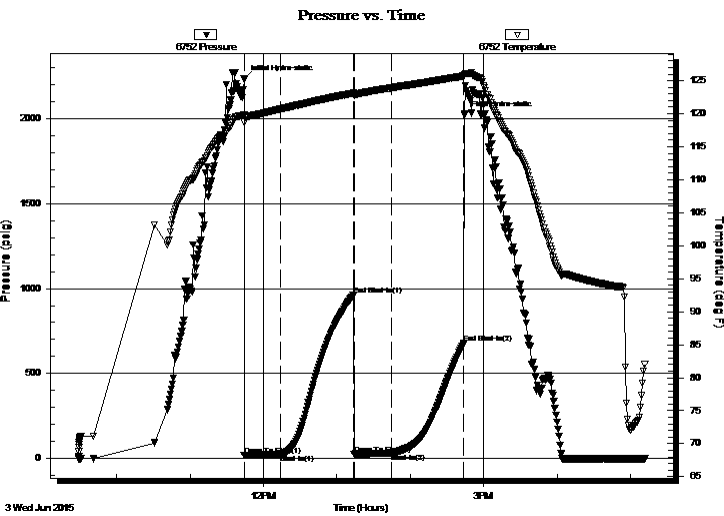
Formation: **Upper Marmaton - Paw**
 Deviated: No Whipstock: ft (KB)
 Time Tool Opened: 11:44:20
 Time Test Ended: 17:11:50
 Interval: **4435.00 ft (KB) To 4538.00 ft (KB) (TVD)**
 Total Depth: 4538.00 ft (KB) (TVD)
 Hole Diameter: 7.88 inches Hole Condition: Good
 Test Type: Conventional Bottom Hole (Reset)
 Tester: Ryan Nichols
 Unit No: 78
 Reference Elevations: 3324.00 ft (KB)
 3313.00 ft (CF)
 KB to GR/CF: 11.00 ft

Serial #: 6752

Outside

Press @ Run Depth: 28.99 psig @ 4436.00 ft (KB) Capacity: 8000.00 psig
 Start Date: 2015.06.03 End Date: 2015.06.03 Last Calib.: 2015.06.03
 Start Time: 09:29:01 End Time: 17:11:50 Time On Btm: 2015.06.03 @ 11:44:10
 Time Off Btm: 2015.06.03 @ 14:44:20

TEST COMMENT: 30 IF - Surface blow died @ 22 mins
 60 ISI - No return
 30 FF - No blow
 60 FSI - No return



PRESSURE SUMMARY

Time (Min.)	Pressure (psig)	Temp (deg F)	Annotation
0	2234.41	119.78	Initial Hydro-static
1	17.78	118.71	Open To Flow (1)
31	22.77	120.71	Shut-In(1)
90	963.45	123.10	End Shut-In(1)
90	25.12	122.74	Open To Flow (2)
121	28.99	123.91	Shut-In(2)
180	677.56	125.71	End Shut-In(2)
181	2021.17	125.95	Final Hydro-static

Recovery

Length (ft)	Description	Volume (bbl)
10.00	Mud with Oil spots - 100%m	0.05

* Recovery from multiple tests

Gas Rates

Choke (inches)	Pressure (psig)	Gas Rate (Mcf/d)



**TRILOBITE
TESTING, INC.**

DRILL STEM TEST REPORT

GAS RATES

Gulf Exploration

3/7S/36W

9701 N. Broadway Extension
Oklahoma City, OK 73114

Goetsch #1-3

Job Ticket: 62582

DST#: 5

ATTN: Mike Madcharo

Test Start: 2015.06.03 @ 09:29:00

Gas Rates Information

Temperature: 59 (deg F)
Relative Density: 0.65
Z Factor: 0.8

Gas Rates Table

Flow Period	Elapsed Time	Choke (inches)	Pressure (psig)	Gas Rate (Mcf/d)
		0.00	0.00	0.00