



TRILOBITE TESTING, INC.

DRILL STEM TEST REPORT

Anderson Exploration LLC

7-7S-24W Graham, KS

168 S. Lark Ln.
Wichita, KS 67209

Dwane Anderson #7-1

ATTN: Dean Anderson

Job Ticket: 61160

DST#: 1

Test Start: 2015.03.03 @ 15:18:08

GENERAL INFORMATION:

Formation: **LKC "B&C"**
 Deviated: No Whipstock: ft (KB)
 Test Type: Conventional Bottom Hole (Initial)
 Time Tool Opened: 18:18:01
 Tester: Brannan Lonsdale
 Time Test Ended: 00:09:31
 Unit No: 62
 Interval: **3790.00 ft (KB) To 3825.00 ft (KB) (TVD)**
 Reference Elevations: 2540.00 ft (KB)
 Total Depth: 3825.00 ft (KB) (TVD)
 2530.00 ft (CF)
 Hole Diameter: 7.88 inches
 Hole Condition: Fair
 KB to GR/CF: 10.00 ft

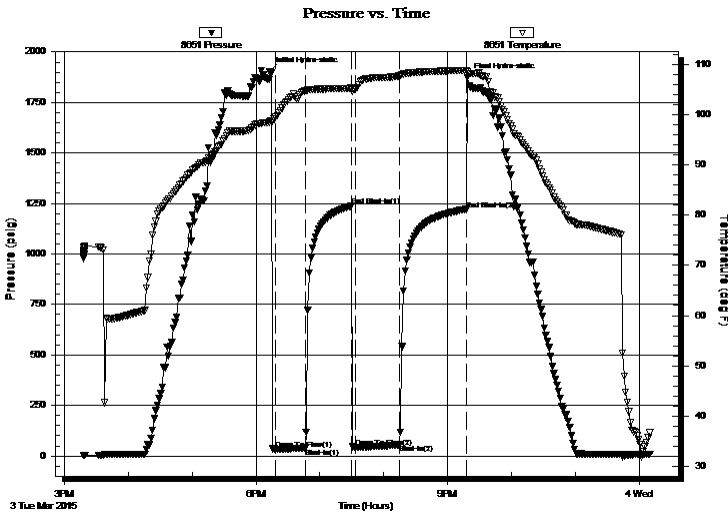
Serial #: 8651

Inside

Press @ Run Depth: 55.07 psig @ 3791.00 ft (KB) Capacity: 8000.00 psig
 Start Date: 2015.03.03 End Date: 2015.03.04 Last Calib.: 2015.03.04
 Start Time: 15:18:09 End Time: 00:09:31 Time On Btm: 2015.03.03 @ 18:13:01
 Time Off Btm: 2015.03.03 @ 21:18:31

TEST COMMENT: 30- IF- Slow ly built to 3"
 45- IS- No blow
 45- FF- Slow ly built to 2"
 60- FSI- No blow

PRESSURE SUMMARY



Time (Min.)	Pressure (psig)	Temp (deg F)	Annotation
0	1901.63	98.56	Initial Hydro-static
5	33.84	99.55	Open To Flow (1)
33	39.48	104.75	Shut-In(1)
77	1237.22	105.29	End Shut-In(1)
81	42.45	105.09	Open To Flow (2)
122	55.07	107.74	Shut-In(2)
184	1220.60	108.84	End Shut-In(2)
186	1873.46	108.53	Final Hydro-static

Recovery

Length (ft)	Description	Volume (bbl)
70.00	MW, 30%M 70%W	0.96

Gas Rates

Choke (inches)	Pressure (psig)	Gas Rate (Mcf/d)



**TRILOBITE
TESTING, INC.**

DRILL STEM TEST REPORT

FLUID SUMMARY

Anderson Exploration LLC

7-7S-24W Graham, KS

168 S. Lark Ln.
Wichita, KS 67209

Dwane Anderson #7-1

Job Ticket: 61160

DST#: 1

ATTN: Dean Anderson

Test Start: 2015.03.03 @ 15:18:08

Mud and Cushion Information

Mud Type: Gel Chem

Cushion Type:

Oil API:

deg API

Mud Weight: 9.00 lb/gal

Cushion Length:

ft

Water Salinity:

60000 ppm

Viscosity: 65.00 sec/qt

Cushion Volume:

bbbl

Water Loss: 7.20 in³

Gas Cushion Type:

Resistivity: ohm.m

Gas Cushion Pressure:

psig

Salinity: 400.00 ppm

Filter Cake: inches

Recovery Information

Recovery Table

Length ft	Description	Volume bbbl
70.00	MW, 30%M 70%W	0.956

Total Length: 70.00 ft Total Volume: 0.956 bbl

Num Fluid Samples: 0

Num Gas Bombs: 0

Serial #:

Laboratory Name:

Laboratory Location:

Recovery Comments:

