



**TRILOBITE
TESTING, INC.**

DRILL STEM TEST REPORT

Anderson Exploration LLC

7-7S-24W Graham, KS

168 S. Lark Ln.
Wichita, KS 67209

Dwane Anderson #7-1

ATTN: Dean Anderson

Job Ticket: 61163

DST#: 4

Test Start: 2015.03.07 @ 05:23:37

GENERAL INFORMATION:

Formation: **Lower KC**

Deviated: No Whipstock: ft (KB)

Time Tool Opened: 07:36:37

Time Test Ended: 12:34:37

Test Type: Conventional Straddle (Reset)

Tester: Brannan Lonsdale

Unit No: 62

Interval: 3875.00 ft (KB) To 4021.00 ft (KB) (TVD)

Reference Elevations: 2540.00 ft (KB)

Total Depth: 4086.00 ft (KB) (TVD)

2530.00 ft (CF)

Hole Diameter: 7.88 inches Hole Condition: Fair

KB to GR/CF: 10.00 ft

Serial #: 8651

Inside

Press@RunDepth: 63.53 psig @ 3876.00 ft (KB)

Capacity: 8000.00 psig

Start Date: 2015.03.07

End Date:

2015.03.07

Last Calib.:

2015.03.07

Start Time:

05:23:38

End Time:

12:34:37

Time On Btm:

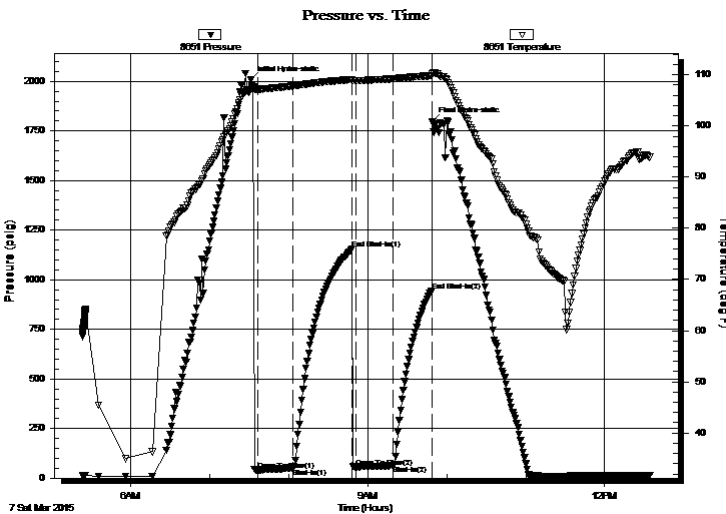
2015.03.07 @ 07:31:07

Time Off Btm:

2015.03.07 @ 09:49:07

TEST COMMENT: 30- IF- Slow ly built to 3"
45- IS- No blow
30- FF- Built very slow ly to .25"
30- FSI- No blow

PRESSURE SUMMARY



Time (Min.)	Pressure (psig)	Temp (deg F)	Annotation
0	2006.05	107.06	Initial Hydro-static
6	40.92	107.19	Open To Flow (1)
33	51.43	107.82	Shut-In(1)
77	1154.50	109.06	End Shut-In(1)
80	56.37	108.85	Open To Flow (2)
109	63.53	109.22	Shut-In(2)
138	942.82	109.83	End Shut-In(2)
138	1796.51	110.15	Final Hydro-static

Recovery

Length (ft)	Description	Volume (bbl)
70.00	M	0.96

* Recovery from multiple tests

Gas Rates

	Choke (inches)	Pressure (psig)	Gas Rate (Mcf/d)



TRILOBITE TESTING, INC

DRILL STEM TEST REPORT

Anderson Exploration LLC

7-7S-24W Graham, KS

168 S. Lark Ln.
Wichita, KS 67209

Dwane Anderson #7-1

ATTN: Dean Anderson

Job Ticket: 61163

DST#: 4

Test Start: 2015.03.07 @ 05:23:37

GENERAL INFORMATION:

Formation: **Lower KC**

Deviated: No Whipstock: ft (KB)

Time Tool Opened: 07:36:37

Time Test Ended: 12:34:37

Test Type: Conventional Straddle (Reset)

Tester: Brannan Lonsdale

Unit No: 62

Interval: 3875.00 ft (KB) To 4021.00 ft (KB) (TVD)

Reference Elevations: 2540.00 ft (KB)

Total Depth: 4086.00 ft (KB) (TVD)

2530.00 ft (CF)

Hole Diameter: 7.88 inches Hole Condition: Fair

KB to GR/CF: 10.00 ft

Serial #: 8673 Below (Straddle)

Press@RunDepth: psig @ 4024.00 ft (KB)

Capacity: 8000.00 psig

Start Date: 2015.03.07 End Date: 2015.03.07

Last Calib.: 2015.03.07

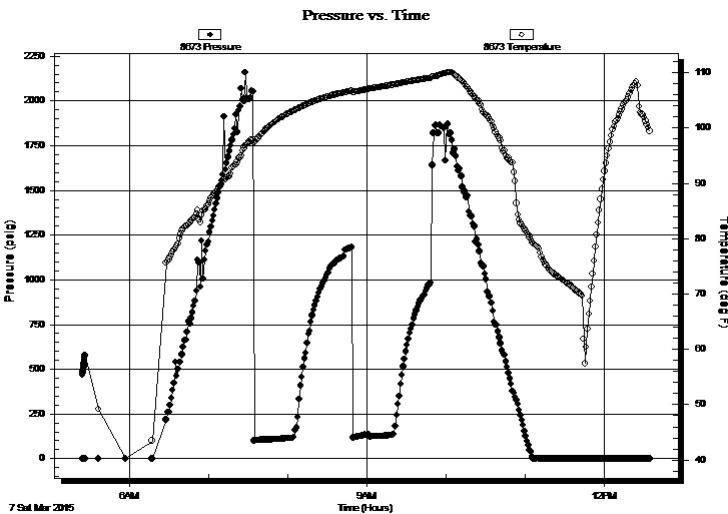
Start Time: 05:24:15 End Time: 12:35:14

Time On Btm:

Time Off Btm:

TEST COMMENT: 30- IF- Slow ly built to 3"
45- IS- No blow
30- FF- Built very slow ly to .25"
30- FS- No blow

PRESSURE SUMMARY



Time (Min.)	Pressure (psig)	Temp (deg F)	Annotation

Recovery

Length (ft)	Description	Volume (bbl)
70.00	M	0.96

* Recovery from multiple tests

Gas Rates

Choke (inches)	Pressure (psig)	Gas Rate (Mcf/d)



**TRILOBITE
TESTING, INC**

DRILL STEM TEST REPORT

FLUID SUMMARY

Anderson Exploration LLC

7-7S-24W Graham, KS

168 S. Lark Ln.
Wichita, KS 67209

Dwane Anderson #7-1

Job Ticket: 61163

DST#: 4

ATTN: Dean Anderson

Test Start: 2015.03.07 @ 05:23:37

Mud and Cushion Information

Mud Type: Gel Chem

Cushion Type:

Oil API:

deg API

Mud Weight: 9.00 lb/gal

Cushion Length:

ft

Water Salinity:

ppm

Viscosity: 61.00 sec/qt

Cushion Volume:

bbbl

Water Loss: 7.80 in³

Gas Cushion Type:

Resistivity: ohm.m

Gas Cushion Pressure:

psig

Salinity: 700.00 ppm

Filter Cake: inches

Recovery Information

Recovery Table

Length ft	Description	Volume bbl
70.00	M	0.956

Total Length: 70.00 ft Total Volume: 0.956 bbl

Num Fluid Samples: 0

Num Gas Bombs: 0

Serial #:

Laboratory Name:

Laboratory Location:

Recovery Comments:

