



DRILL STEM TEST REPORT

Prepared For: **SHELBY RESOURCES LLC**

621 17TH STREET SUITE 1150
621 17TH STREET SUITE 1150
DENVER, COLORADO 80293

ATTN: JEREMY SCHWARTZ

FENWICK 32-26

26-21S-16W PAWNEE

Start Date: 2015.06.19 @ 00:00:00

End Date: 2015.06.20 @ 00:00:00

Job Ticket #: 01039 DST #: 1

Eagle Testers
1309 Patton Road Great Bend, Kansas 67530
620-791-7394

Printed: 2015.06.20 @ 02:39:46



DRILL STEM TEST REPORT

SHELBY RESOURCES LLC

26-21S-16W PAWNEE

621 17TH STREET SUITE 1150
 621 17TH STREET SUITE 1150
 DENVER, COLORADO 80293
 ATTN: JEREMY SCHWARTZ

FENWICK 32-26

Job Ticket: 01039

DST#: 1

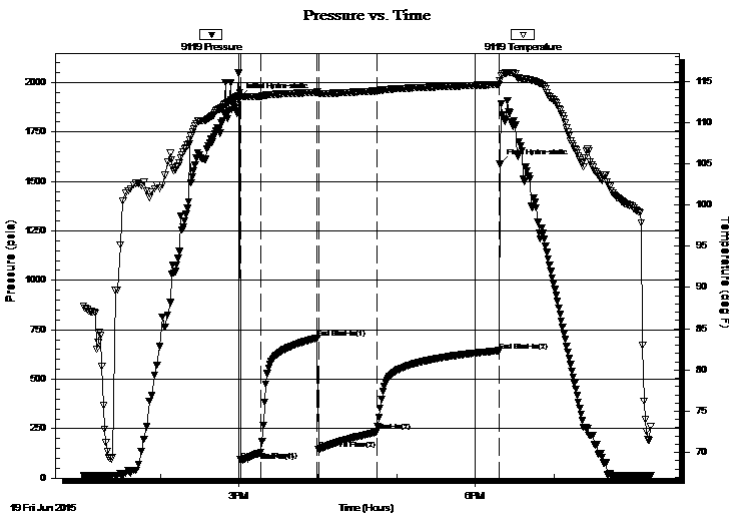
Test Start: 2015.06.19 @ 00:00:00

GENERAL INFORMATION:

Formation: **CONGLOMERATE**
 Deviated: No Whipstock: ft (KB)
 Time Tool Opened: 00:00:00
 Time Test Ended: 00:00:00
 Interval: **3770.00 ft (KB) To 3805.00 ft (KB) (TVD)**
 Total Depth: 3805.00 ft (KB) (TVD)
 Hole Diameter: 7.88 inches Hole Condition: Fair
 Test Type: Conventional Bottom Hole (Initial)
 Tester: GENE BUDIG
 Unit No: 42
 Reference Elevations: 1988.00 ft (KB)
 1875.00 ft (CF)
 KB to GR/CF: 113.00 ft

Serial #: 9119 Inside
 Press@RunDepth: 644.40 psia @ 3800.00 ft (KB) Capacity: 5000.00 psia
 Start Date: 2015.06.19 End Date: 2015.06.19 Last Calib.: 2015.06.20
 Start Time: 07:20:00 End Time: 20:13:53 Time On Btm: 2015.06.19 @ 15:00:23
 Time Off Btm: 2015.06.19 @ 18:18:23

TEST COMMENT: 1ST OPENING 15 MINUTES FAIR BLOW BUILT TO THE BOTTOM OF A 5 GALLON BUCKET IN 3 MINUTES
 1ST SHUT-IN 45 MINUTES- FAIR BLOW BACK
 2ND OPENING 45 MINUTES FAIR BLOW BUILT TO THE BOTTOM OF A 5 GALLON BUCKLET IN 6 MINUTES



PRESSURE SUMMARY

| Time (Min.) | Pressure (psia) | Temp (deg F) | Annotation |
|-------------|-----------------|--------------|----------------------|
| 0 | 1924.57 | 113.57 | Initial Hydro-static |
| 1 | 92.78 | 113.14 | Open To Flow (1) |
| 16 | 131.99 | 113.15 | Shut-In(1) |
| 59 | 708.15 | 113.65 | End Shut-In(1) |
| 60 | 145.75 | 113.49 | Open To Flow (2) |
| 105 | 238.08 | 113.82 | Shut-In(2) |
| 198 | 644.40 | 114.59 | End Shut-In(2) |
| 199 | 1586.85 | 115.06 | Final Hydro-static |

Recovery

| Length (ft) | Description | Volume (bbl) |
|-------------|-----------------------|--------------|
| 0.00 | 675 GAS IN THE PIPE | 0.00 |
| 150.00 | MUDDY GASS OIL | 1.54 |
| 0.00 | 6 GAS 60 OIL 34 MUD | 0.00 |
| 250.00 | WATER CHLORIDES 38000 | 3.51 |
| | | |
| | | |

Gas Rates

| | Choke (inches) | Pressure (psia) | Gas Rate (Mcf/d) |
|--|----------------|-----------------|------------------|
| | | | |



DRILL STEM TEST REPORT

SHELBY RESOURCES LLC

26-21S-16W PAWNEE

621 17TH STREET SUITE 1150
 621 17TH STREET SUITE 1150
 DENVER, COLORADO 80293
 ATTN: JEREMY SCHWARTZ

FENWICK 32-26

Job Ticket: 01039

DST#: 1

Test Start: 2015.06.19 @ 00:00:00

GENERAL INFORMATION:

Formation: **CONGLOMERATE**

Deviated: No Whipstock: ft (KB)

Time Tool Opened: 00:00:00

Time Test Ended: 00:00:00

Test Type: Conventional Bottom Hole (Initial)

Tester: GENE BUDIG

Unit No: 42

Interval: **3770.00 ft (KB) To 3805.00 ft (KB) (TVD)**

Reference Elevations: 1988.00 ft (KB)

Total Depth: 3805.00 ft (KB) (TVD)

1875.00 ft (CF)

Hole Diameter: 7.88 inches Hole Condition: Fair

KB to GR/CF: 113.00 ft

Serial #: 9139 Outside

Press@RunDepth: 643.34 psia @ 3800.00 ft (KB)

Capacity: 5000.00 psia

Start Date: 2015.06.19

End Date: 2015.06.19

Last Calib.: 2015.06.20

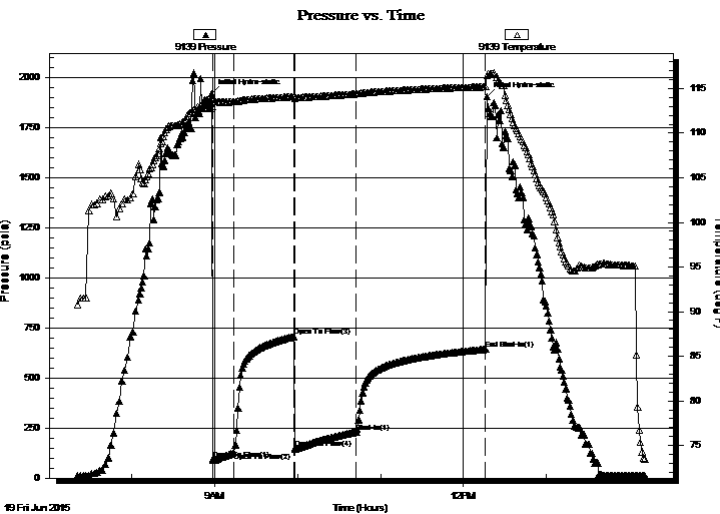
Start Time: 07:20:00

End Time: 14:11:30

Time On Btm: 2015.06.19 @ 08:58:00

Time Off Btm: 2015.06.19 @ 12:17:00

TEST COMMENT: 1ST OPENING 15 MINUTES FAIR BLOW BUILT TO THE BOTTOM OF A 5 GALLON BUCKET IN 3 MINUTES
 1ST SHUT-IN 45 MINUTES- FAIR BLOW BACK
 2ND OPENING 45 MINUTES FAIR BLOW BUILT TO THE BOTTOM OF A 5 GALLON BUCKLET IN 6 MINUTES



PRESSURE SUMMARY

| Time (Min.) | Pressure (psia) | Temp (deg F) | Annotation |
|-------------|-----------------|--------------|----------------------|
| 0 | 1919.43 | 114.05 | Initial Hydro-static |
| 1 | 93.21 | 113.00 | Open To Flow (1) |
| 16 | 127.92 | 113.51 | Open To Flow (2) |
| 60 | 707.16 | 114.11 | Open To Flow (3) |
| 60 | 150.15 | 113.92 | Open To Flow (4) |
| 105 | 229.87 | 114.39 | Shut-In(1) |
| 198 | 643.34 | 115.19 | End Shut-In(1) |
| 199 | 1904.24 | 116.41 | Final Hydro-static |

Recovery

| Length (ft) | Description | Volume (bbl) |
|-------------|-----------------------|--------------|
| 0.00 | 675 GAS IN THE PIPE | 0.00 |
| 150.00 | MUDDY GASS OIL | 1.54 |
| 0.00 | 6 GAS 60 OIL 34 MUD | 0.00 |
| 250.00 | WATER CHLORIDES 38000 | 3.51 |
| | | |
| | | |

Gas Rates

| | Choke (inches) | Pressure (psia) | Gas Rate (Mcf/d) |
|--|----------------|-----------------|------------------|
| | | | |



DRILL STEM TEST REPORT

TOOL DIAGRAM

SHELBY RESOURCES LLC

26-21S-16W PAWNEE

621 17TH STREET SUITE 1150
 621 17TH STREET SUITE 1150
 DENVER, COLORADO 80293
 ATTN: JEREMY SCHWARTZ

FENWICK 32-26

Job Ticket: 01039

DST#: 1

Test Start: 2015.06.19 @ 00:00:00

Tool Information

| | | | | |
|---------------------------|--------------------|-----------------------|---------------------|------------------------------------|
| Drill Pipe: | Length: 3694.00 ft | Diameter: 3.80 inches | Volume: 51.82 bbl | Tool Weight: 2000.00 lb |
| Heavy Wt. Pipe: | Length: ft | Diameter: inches | Volume: - bbl | Weight set on Packer: 20000.00 lb |
| Drill Collar: | Length: 62.00 ft | Diameter: 2.25 inches | Volume: 0.30 bbl | Weight to Pull Loose: 74000.00 lb |
| | | | Total Volume: - bbl | Tool Chased 0.00 ft |
| Drill Pipe Above KB: | 15.00 ft | | | String Weight: Initial 57000.00 lb |
| Depth to Top Packer: | 3770.00 ft | | | Final 58000.00 lb |
| Depth to Bottom Packer: | ft | | | |
| Interval between Packers: | 35.00 ft | | | |
| Tool Length: | 64.00 ft | | | |
| Number of Packers: | 2 | Diameter: 6.75 inches | | |

Tool Comments:

Tool Description

| Tool Description | Length (ft) | Serial No. | Position | Depth (ft) | Accum. Lengths |
|---------------------------|--------------|------------|----------|------------|----------------------------|
| Shut In Tool | 5.00 | | | 3746.00 | |
| Hydraulic tool | 5.00 | | | 3751.00 | |
| Jars | 7.00 | | | 3758.00 | |
| Safety Joint | 2.00 | | Fluid | 3760.00 | |
| Top Packer | 5.00 | | | 3765.00 | |
| Packer | 5.00 | | | 3770.00 | 29.00 Bottom Of Top Packer |
| Anchor | 30.00 | | | 3800.00 | |
| Recorder | 0.00 | 9119 | Inside | 3800.00 | |
| Recorder | 0.00 | 9139 | Outside | 3800.00 | |
| Bullnose | 5.00 | | | 3805.00 | 35.00 Anchor Tool |
| Total Tool Length: | 64.00 | | | | |



DRILL STEM TEST REPORT

FLUID SUMMARY

SHELBY RESOURCES LLC

26-21S-16W PAWNEE

621 17TH STREET SUITE 1150
 621 17TH STREET SUITE 1150
 DENVER, COLORADO 80293
 ATTN: JEREMY SCHWARTZ

FENWICK 32-26

Job Ticket: 01039

DST#: 1

Test Start: 2015.06.19 @ 00:00:00

Mud and Cushion Information

Mud Type: Gel Chem
 Mud Weight: 9.00 lb/gal
 Viscosity: 49.00 sec/qt
 Water Loss: 10.40 in³
 Resistivity: ohm.m
 Salinity: 4300.00 ppm
 Filter Cake: 1.00 inches

Cushion Type:
 Cushion Length: ft
 Cushion Volume: bbl
 Gas Cushion Type:
 Gas Cushion Pressure: psia

Oil API: deg API
 Water Salinity: 38000 ppm

Recovery Information

Recovery Table

| Length ft | Description | Volume bbl |
|--------------|-----------------------|---------------|
| 0.00 | 675 GAS IN THE PIPE | 0.000 |
| 150.00 | MUDDY GASS OIL | 1.539 |
| 0.00 | 6 GAS 60 OIL 34 MUD | 0.000 |
| 250.00 | WATER CHLORIDES 38000 | 3.507 |

Total Length: 400.00 ft Total Volume: 5.046 bbl

Num Fluid Samples: 0 Num Gas Bombs: 0 Serial #:

Laboratory Name: Laboratory Location:

Recovery Comments:

