



**TRILOBITE
TESTING, INC.**

DRILL STEM TEST REPORT

Red Oak Energy
7701 E Kellogg Dr Ste 710
Wichita, Ks
67207-1738
ATTN: Sean Deenihan

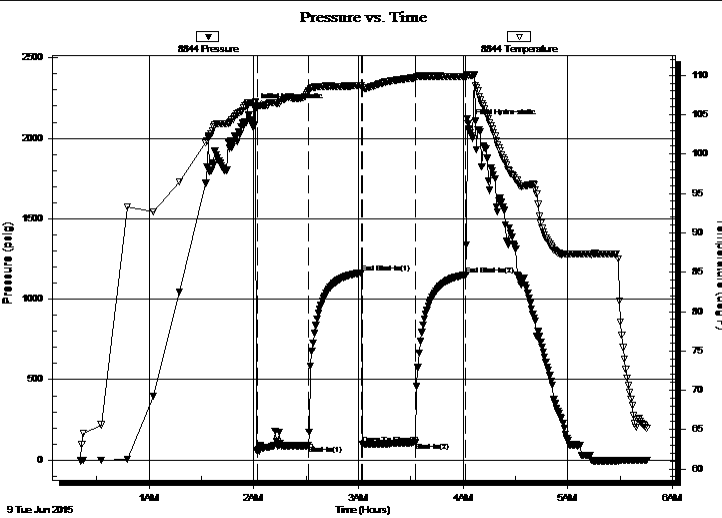
7-17-34w Scott, Ks
Wilkens #1-7
Job Ticket: 61488 **DST#: 1**
Test Start: 2015.06.09 @ 00:20:46

GENERAL INFORMATION:

Formation: **H-I**
Deviated: No Whipstock: 0.00 ft (KB)
Time Tool Opened: 02:02:01
Time Test Ended: 05:55:16
Interval: **4248.00 ft (KB) To 4340.00 ft (KB) (TVD)**
Total Depth: 4340.00 ft (KB) (TVD)
Hole Diameter: 7.88 inches Hole Condition: Fair
Test Type: Conventional Bottom Hole (Initial)
Tester: Shane McBride
Unit No: 84
Reference Elevations: 3163.00 ft (KB)
3158.00 ft (CF)
KB to GR/CF: 5.00 ft

Serial #: 8844 Inside
Press @ Run Depth: 110.02 psig @ 4249.00 ft (KB) Capacity: 8000.00 psig
Start Date: 2015.06.09 End Date: 2015.06.09 Last Calib.: 2015.06.09
Start Time: 00:20:46 End Time: 05:45:16 Time On Btm: 2015.06.09 @ 02:00:31
Time Off Btm: 2015.06.09 @ 04:02:46

TEST COMMENT: 5 1/4" in blow
No return
5 1/4" in blow
No return



PRESSURE SUMMARY

Time (Min.)	Pressure (psig)	Temp (deg F)	Annotation
0	2189.71	106.61	Initial Hydro-static
2	54.56	106.16	Open To Flow (1)
31	90.82	107.93	Shut-In(1)
62	1164.59	108.70	End Shut-In(1)
62	97.64	108.41	Open To Flow (2)
92	110.02	109.70	Shut-In(2)
121	1152.26	109.84	End Shut-In(2)
123	2092.09	110.09	Final Hydro-static

Recovery

Length (ft)	Description	Volume (bbl)
60.00	m c w 30m 70w	0.30
60.00	o & w c m 20o 30w 50m	0.30
95.00	m & w c o 20w 35m 45o	1.33
20.00	c o 100o	0.28

Gas Rates

	Choke (inches)	Pressure (psig)	Gas Rate (Mcf/d)



**TRILOBITE
TESTING, INC.**

DRILL STEM TEST REPORT

FLUID SUMMARY

Red Oak Energy

7-17-34w Scott, Ks

7701 E Kellogg Dr Ste 710
Wichita, Ks
67207-1738
ATTN: Sean Deenihan

Wilkens #1-7

Job Ticket: 61488

DST#: 1

Test Start: 2015.06.09 @ 00:20:46

Mud and Cushion Information

Mud Type: Gel Chem

Cushion Type:

Oil API:

18 deg API

Mud Weight: 9.00 lb/gal

Cushion Length:

ft

Water Salinity:

31000 ppm

Viscosity: 55.00 sec/qt

Cushion Volume:

bbbl

Water Loss: 7.20 in³

Gas Cushion Type:

Resistivity: 0.00 ohm.m

Gas Cushion Pressure:

psig

Salinity: 5000.00 ppm

Filter Cake: 1.00 inches

Recovery Information

Recovery Table

Length ft	Description	Volume bbbl
60.00	m c w 30m 70w	0.295
60.00	o & w c m 20o 30w 50m	0.295
95.00	m & w c o 20w 35m 45o	1.333
20.00	c o 100o	0.281

Total Length: 235.00 ft Total Volume: 2.204 bbl

Num Fluid Samples: 0

Num Gas Bombs: 0

Serial #:

Laboratory Name:

Laboratory Location:

Recovery Comments: rw .259 @ 60*f= 31,000 chlor

