



**TRILOBITE
TESTING, INC**

DRILL STEM TEST REPORT

Red Oak Energy
7701 E Kellogg Dr Ste 710
Wichita, Ks
67207-1738
ATTN: Sean Deenihan

7-17-34w Scott, Ks
Wilkens #1-7
Job Ticket: 61489 **DST#: 2**
Test Start: 2015.06.09 @ 11:35:22

GENERAL INFORMATION:

Formation: **K**
Deviated: No Whipstock: 0.00 ft (KB)
Time Tool Opened: 13:12:07
Time Test Ended: 17:50:22
Interval: **4340.00 ft (KB) To 4376.00 ft (KB) (TVD)**
Total Depth: 4376.00 ft (KB) (TVD)
Hole Diameter: 7.88 inches Hole Condition: Fair
Test Type: Conventional Bottom Hole (Reset)
Tester: Shane McBride
Unit No: 84
Reference Elevations: 3163.00 ft (KB)
3158.00 ft (CF)
KB to GR/CF: 5.00 ft

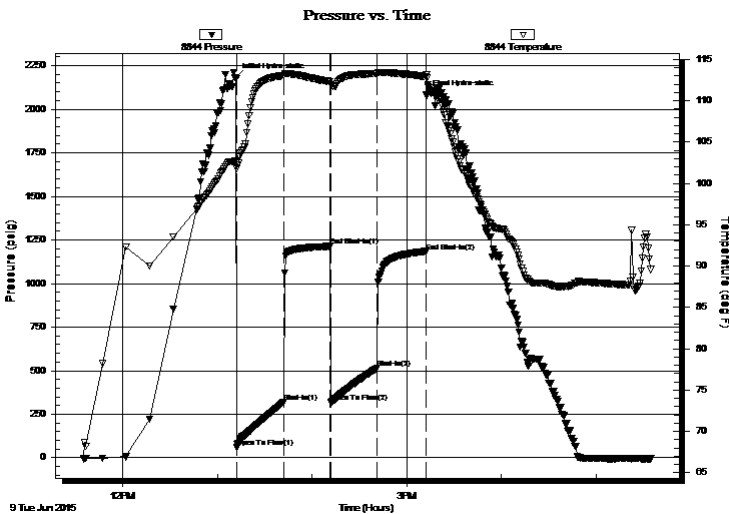
Serial #: 8844

Inside

Press@RunDepth: 513.83 psig @ 4341.00 ft (KB) Capacity: 8000.00 psig
Start Date: 2015.06.09 End Date: 2015.06.09 Last Calib.: 2015.06.09
Start Time: 11:35:22 End Time: 17:34:22 Time On Btm: 2015.06.09 @ 13:11:37
Time Off Btm: 2015.06.09 @ 15:12:22

TEST COMMENT: B.O.B. in 6 1/2 min
No return
B.O.B. in 7 min.
No return

PRESSURE SUMMARY



Time (Min.)	Pressure (psig)	Temp (deg F)	Annotation
0	2180.37	102.73	Initial Hydro-static
1	58.40	101.78	Open To Flow (1)
31	317.88	113.03	Shut-In(1)
60	1213.39	112.32	End Shut-In(1)
61	318.00	111.98	Open To Flow (2)
90	513.83	113.27	Shut-In(2)
121	1184.29	112.91	End Shut-In(2)
121	2084.51	113.18	Final Hydro-static

Recovery

Length (ft)	Description	Volume (bbl)
819.00	water 100%w w/heavy oil scum	10.40
126.00	m c w 20m 80w w/heavy oil scum	1.77
121.00	w c m 45w 55m w/heavy oil scum	1.70

* Recovery from multiple tests

Gas Rates

	Choke (inches)	Pressure (psig)	Gas Rate (Mcf/d)



**TRILOBITE
TESTING, INC**

DRILL STEM TEST REPORT

FLUID SUMMARY

Red Oak Energy

7-17-34w Scott, Ks

7701 E Kellogg Dr Ste 710
Wichita, Ks
67207-1738
ATTN: Sean Deenihan

Wilkens #1-7

Job Ticket: 61489

DST#: 2

Test Start: 2015.06.09 @ 11:35:22

Mud and Cushion Information

Mud Type: Gel Chem

Mud Weight: 10.00 lb/gal

Viscosity: 52.00 sec/qt

Water Loss: 8.78 in³

Resistivity: 0.00 ohm.m

Salinity: 7000.00 ppm

Filter Cake: 1.00 inches

Cushion Type:

Cushion Length: ft

Cushion Volume: bbl

Gas Cushion Type:

Gas Cushion Pressure: psig

Oil API: 0 deg API

Water Salinity: 38000 ppm

Recovery Information

Recovery Table

Length ft	Description	Volume bbl
819.00	water 100%w w/heavy oil scum	10.395
126.00	m c w 20m 80w w/heavy oil scum	1.767
121.00	w c m 45w 55m w/heavy oil scum	1.697

Total Length: 1066.00 ft Total Volume: 13.859 bbl

Num Fluid Samples: 0

Num Gas Bombs: 0

Serial #:

Laboratory Name:

Laboratory Location:

Recovery Comments: rw .140 @ 89*f= 38,000 chlor

