



**TRILOBITE  
TESTING, INC**

# DRILL STEM TEST REPORT

SGA  
1515 Wykoop  
STE 700  
Denver Co 80202  
ATTN: Chris Mitchel

**6-2S-36W Rawlins KS**

**Frisbe #1-6**

Job Ticket: 62576

**DST#: 1**

Test Start: 2015.05.06 @ 18:41:00

## GENERAL INFORMATION:

Formation: **LKC " A "**

Deviated: No Whipstock: ft (KB)

Time Tool Opened: 21:45:30

Time Test Ended: 01:38:20

Test Type: Conventional Bottom Hole (Initial)

Tester: Ryan Nichols

Unit No: 78

**Interval: 4278.00 ft (KB) To 4302.00 ft (KB) (TVD)**

Total Depth: 4302.00 ft (KB) (TVD)

Hole Diameter: 7.88 inches Hole Condition: Good

Reference Elevations: 3343.00 ft (KB)

3338.00 ft (CF)

KB to GR/CF: 5.00 ft

**Serial #: 6752**

**Inside**

Press@RunDepth: 15.59 psig @ 4283.00 ft (KB)

Start Date: 2015.05.06

End Date:

2015.05.07

Start Time: 18:41:01

End Time:

01:38:20

Capacity: 8000.00 psig

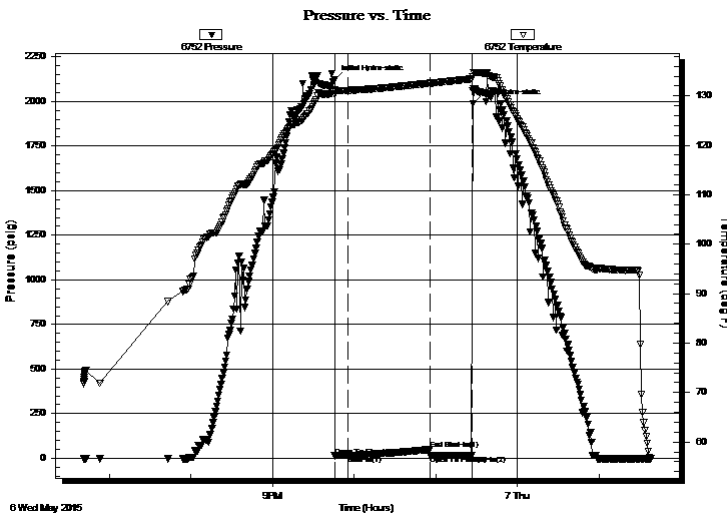
Last Calib.: 2015.05.07

Time On Btm: 2015.05.06 @ 21:45:20

Time Off Btm: 2015.05.06 @ 23:27:09

TEST COMMENT: 10 IF - Surface blow  
60 ISI - No return  
30 FF - No blow , pulled tool

## PRESSURE SUMMARY



Time (Min.)	Pressure (psig)	Temp (deg F)	Annotation
0	2122.76	131.31	Initial Hydro-static
1	13.72	130.30	Open To Flow (1)
11	15.59	131.12	Shut-In(1)
70	49.31	132.56	End Shut-In(1)
71	15.82	132.55	Open To Flow (2)
101	16.91	133.44	Shut-In(2)
102	1987.62	134.03	Final Hydro-static

## Recovery

Length (ft)	Description	Volume (bbl)
1.00	Mud w ith oil spots	0.00

## Gas Rates

	Choke (inches)	Pressure (psig)	Gas Rate (Mcf/d)





**TRILOBITE  
TESTING, INC**

# DRILL STEM TEST REPORT

## FLUID SUMMARY

SGA  
1515 Wykoop  
STE 700  
Denver Co 80202  
ATTN: Chris Mitchel

**6-2S-36W Rawlins KS**  
**Frisbe #1-6**  
Job Ticket: 62576      **DST#: 1**  
Test Start: 2015.05.06 @ 18:41:00

### Mud and Cushion Information

Mud Type: Gel Chem	Cushion Type:	Oil API:	deg API
Mud Weight: 9.00 lb/gal	Cushion Length: ft	Water Salinity:	ppm
Viscosity: 55.00 sec/qt	Cushion Volume: bbl		
Water Loss: 6.80 in <sup>3</sup>	Gas Cushion Type:		
Resistivity: ohm.m	Gas Cushion Pressure: psig		
Salinity: 1000.00 ppm			
Filter Cake: 1.00 inches			

### Recovery Information

Recovery Table

Length ft	Description	Volume bbl
1.00	Mud w ith oil spots	0.005

Total Length: 1.00 ft      Total Volume: 0.005 bbl  
Num Fluid Samples: 0      Num Gas Bombs: 0      Serial #:  
Laboratory Name:      Laboratory Location:  
Recovery Comments:



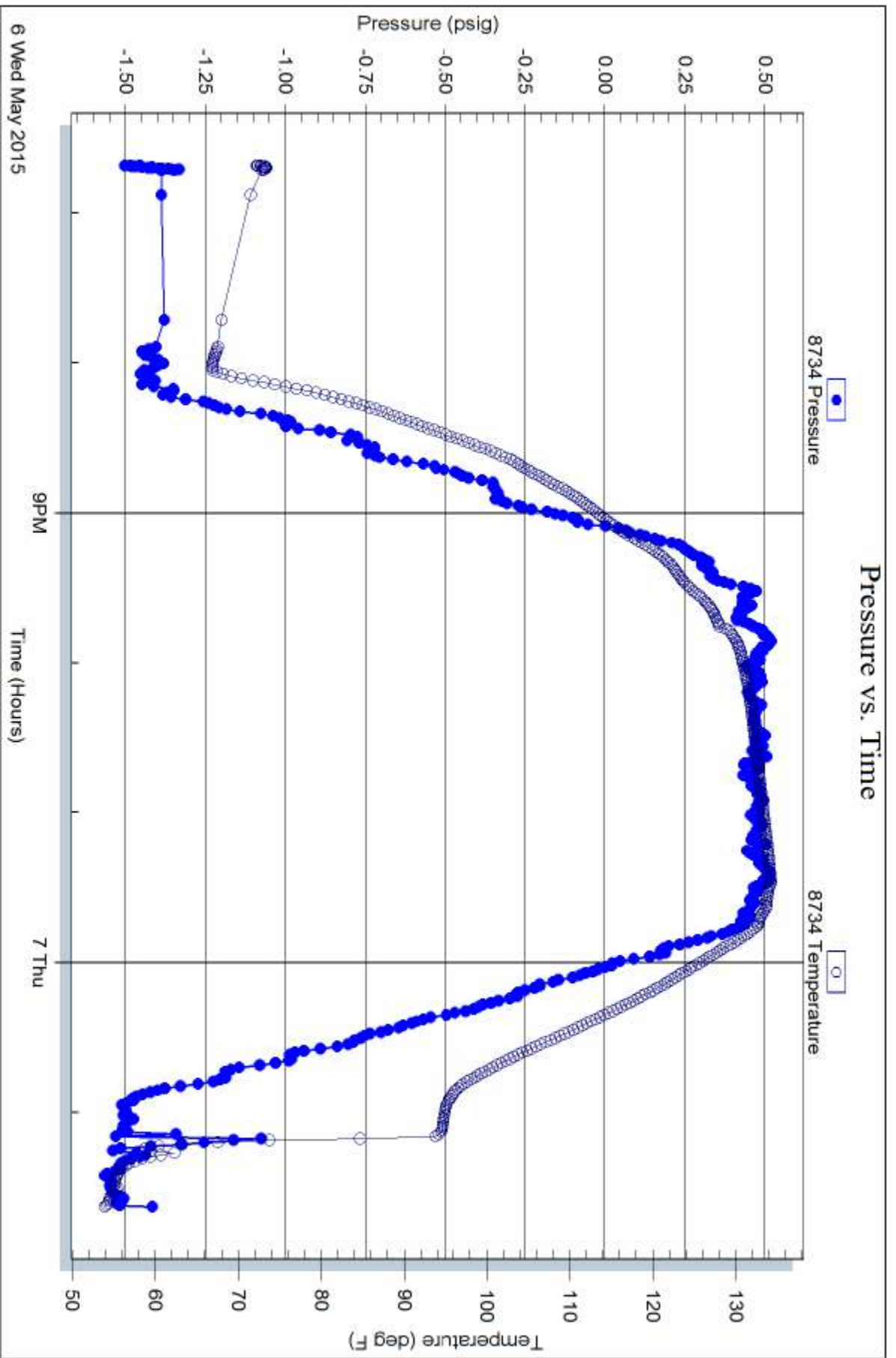
Serial #: 8734

Fluid

SGA

Frisbe #1-6

DST Test Number: 1



Trilobite Testing, Inc

Ref. No: 62576

Printed: 2015.05.07 @ 08:07:46