

OPERATOR

Company: Globe Operating, Inc.
 Address: P.O. Box 12
 Great Bend, KS 67530

Contact Geologist:
 Contact Phone Nbr: 620-792-7607
 Well Name: Wright #2
 Location: Sec. 32 - T20S - R13W
 API: 15-009-26110-0000
 Pool:
 State: Kansas

Field: Hiss SE
 Country: USA

Scale 1:240 Imperial

Well Name: Wright #2
 Surface Location: Sec. 32 - T20S - R13W
 Bottom Location:
 API: 15-009-26110-0000
 License Number: 6170
 Spud Date: 7/27/2015 Time: 7:00 AM
 Region: Barton County
 Drilling Completed: 8/2/2015 Time: 1:15 PM
 Surface Coordinates: 2014' FSL & 541' FWL
 Bottom Hole Coordinates:
 Ground Elevation: 1905.00ft
 K.B. Elevation: 1913.00ft
 Logged Interval: 3000.00ft To: 3620.00ft
 Total Depth: 3620.00ft
 Formation: Arbuckle
 Drilling Fluid Type: Chemical/Fresh Water Gel

SURFACE CO-ORDINATES

Well Type: Vertical
 Longitude:
 Latitude:
 N/S Co-ord: 2014' FSL
 E/W Co-ord: 541' FWL

LOGGED BY

Keith Reavis
Consulting Geologist

Company: Keith Reavis, Inc.
 Address: 3420 22nd Street
 Great Bend, KS 67530

Phone Nbr: 620-617-4091
 Logged By: KLG #136

Name: Keith Reavis

CONTRACTOR

Contractor: Discovery Drilling
 Rig #: 2
 Rig Type: mud rotary
 Spud Date: 7/27/2015
 TD Date: 8/2/2015
 Rig Release:

Time: 7:00 AM
 Time: 1:15 PM
 Time:

ELEVATIONS

K.B. Elevation: 1913.00ft
 K.B. to Ground: 8.00ft

Ground Elevation: 1905.00ft

NOTES

Due to positive results of DST #3, favorable structural position and positive electrical log analysis, the operator elected to run 5 1/2" production casing and further test the Arbuckle through perforations and stimulation.

Respectfully submitted.

Globe Operating, Inc.

daily drilling report

DATE	7:00 AM DEPTH	REMARKS
07/30/2015		Geologist Keith Reavis on location @ 1600 hrs, 3123 ft, drilling ahead Topeka, Queen Hill, Plattsmouth, Heebner, Toronto, Douglas, Brown Lime, Lansing
07/31/2015	3380	shows in Lansing D and F warrant test, short trip, TOH w/bit, conduct and complete DST #1, successful test, TIH w/bit, resume drilling, show in J zone warrants test, TOH for DST #2
08/01/2015	3480	conduct DST #2, successful test, TIH w/bit, resume drilling, Marm, Simpson, Arbuckle, show in Arbuckle warrants test, TOH for DST #3, conduct DST #3, successful test, TIH w/bit, resume drilling
08/02/2015	3565	conduct DST #4, successful test, TIH w/bit, rathole ahead to TD, 3620 ft, @ 1310 hrs, ctch, TOH for logs, conduct and complete logging operations geologist off location @ 1930 hrs

Globe Operating, Inc.

well comparison sheet

DRILLING WELL					COMPARISON WELL			
Wright #2 2014' FSL & 541' FWL Sec. 32-T20S-R13W					Production Inc. - Wright #1 C N/2 NE SW Sec. 32-T20S-R13W			
1913 KB					1901 KB		Structural Relationship	
Formation	Sample	Sub-Sea	Log	Sub-Sea	Log	Sub-Sea	Sample	Log
Queen Hill	3078	-1165	3079	-1166	3062	-1161	-4	-5
Heebner	3178	-1265	3178	-1265	3163	-1262	-3	-3
Toronto	3200	-1287	3197	-1284	3182	-1281	-6	-3
Douglas	3216	-1303	3216	-1303	3200	-1299	-4	-4
Brown Lime	3293	-1380	3294	-1381	3279	-1378	-2	-3
Lansing	3305	-1392	3304	-1391	3291	-1390	-2	-1
Lansing G	3383	-1470	3383	-1470	3370	-1469	-1	-1
Base KC	3480	-1567	3484	-1571	3470	-1569	2	-2
Simpson	3518	-1605	3518	-1605	3508	-1607	2	2
Arbuckle	3545	-1632	3544	-1631	3540	-1639	7	8
Total Depth	3620	-1707	3620	-1707	3556	-1655	-52	-52

Drill Stem Test #1



DIAMOND TESTING
P. O. Box 157
HOISINGTON, KANSAS 67544
(800) 542-7313

TIME ON: 08:30 7/31/15
TIME OFF: 13:30 7/31/15

DRILL-STEM TEST TICKET
FILE: STCWright2dst1

Company	GLOBE OPERATING INC.		Lease & Well No.	WRIGHT #2	
Contractor	DISCOVERY DRLG RIG 2		Charge to	GLOBE OPERATING INC.	
Elevation	1913 K.B	Formation	LKC D-F	Effective Pay	
Date	7/31/15	Sec.	32	Twp.	20 S Range 13 W County BARTON State KANSAS
Test Approved By	KEITH REAVIS		Diamond Representative	JOHN RIEDL	
Formation Test No.	4	Interval Tested from	3332 ft. to	3380 ft.	Total Depth 3380 ft.
Packer Depth	3327	ft. Size	6 3/4	in.	Packer depth
Packer Depth	3332	ft. Size	6 3/4	in.	Packer depth
Depth of Selective Zone Set					
Top Recorder Depth (Inside)	3335		ft.	Recorder Number	30046 Cap. 6000 P.S.I.
Bottom Recorder Depth (Outside)	3377		ft.	Recorder Number	13498 Cap. 6000 P.S.I.
Below Straddle Recorder Depth			ft.	Recorder Number	Cap. P.S.I.
Mud Type	CHEMICAL	Viscosity	48	Drill Collar Length	0 ft. I.D. 2 1/4 in.

Weight	9	Water Loss	8.8	cc.	Weight Pipe Length	310	ft.	I.D.	2 7/8	in
Chlorides			5,300	P.P.M.	Drill Pipe Length	2996	ft.	I.D.	3 1/2	in
Jars: Make	STERLING	Serial Number	#1		Test Tool Length	26	ft.	Tool Size	3 1/2-FH	in
Did Well Flow?	NO	Reversed Out	NO		Anchor Length	48	ft.	Size	4 1/2-FH	in
Main Hole Size	7 7/8	Tool Joint Size	4 1/2	XH in.	Surface Choke Size	1	in.	Bottom Choke Size	5/8	in
Blow:	1st Open: WEAK (2" DECREASING TO 1")									
	2nd Open: NO BLOW (FLUSHED TOOL BUT NO HELP) NO BB									
Recovered	70	ft. of	DRILLING MUD							
Recovered		ft. of								
Recovered		ft. of								
Recovered		ft. of								
Recovered		ft. of								
Recovered		ft. of								
Recovered		ft. of								
Recovered		ft. of								
Remarks:	TOTAL FLUID RECOVERY: 70' IN WEIGHT PIPE								Price Job	
	SHUT-IN TOOL RECOVERY GRINDOUT: 100% MUD								Other Charges	
									Insurance	
									Total	
Time Set Packer(s)	10:00 A.M.	A.M.	P.M.	Time Started Off Bottom	12:00 P.M.	A.M.	P.M.	Maximum Temperature		
Initial Hydrostatic Pressure		(A)						P.S.I.		
Initial Flow Period	Minutes	15	(B)					P.S.I. to (C)		
Initial Closed In Period	Minutes	30	(D)					P.S.I.		
Final Flow Period	Minutes	30	(E)					P.S.I. to (F)		
Final Closed In Period	Minutes	45	(G)					P.S.I.		
Final Hydrostatic Pressure		(H)						P.S.I.		

Drill Stem Test #2



DIAMOND TESTING
P.O. Box 157
HOISINGTON, KANSAS 67544
(800) 542-7313
DRILL-STEM TEST TICKET
FILE: STC/Wright2dst2

TIME ON: 1:00 8/1/15
TIME OFF: 5:30 8/1/15

Company	GLOBE OPERATING INC				Lease & Well No.	WRIGHT #2					
Contractor	DISCOVERY RIG 2				Charge to	GLOBE OPERATING INC					
Elevation	1913 K.B	Formation	KC "J"			Effective Pay		Ft.	Ticket No.	J351	
Date	8/1/15	Sec.	32	Twp.	20	S Range	13	W County	BARTON	State	KANSAS
Test Approved By	KEITH REAVIS				Diamond Representative	JOHN RIEDL					
Formation Test No.	2	Interval Tested from	3460	ft. to	3480	Total Depth	3480				
Packer Depth	3455	ft.	Size	6 3/4	in.	Packer depth		ft.	Size	6 3/4	in.
Packer Depth	3460	ft.	Size	6 3/4	in.	Packer depth		ft.	Size	6 3/4	in.
Depth of Selective Zone Set											
Top Recorder Depth (Inside)	3463	ft.	Recorder Number	30046	Cap.	6000	P.S.I.				
Bottom Recorder Depth (Outside)	3477	ft.	Recorder Number	13498	Cap.	6000	P.S.I.				
Below Straddle Recorder Depth		ft.	Recorder Number		Cap.		P.S.I.				
Mud Type	CHEMICAL	Viscosity	98	Drill Collar Length	0	ft.	I.D.	2 1/4	in.		
Weight	9.1	Water Loss	8.8	cc.	Weight Pipe Length	310	ft.	I.D.	2 7/8	in	
Chlorides			6,000	P.P.M.	Drill Pipe Length	3124	ft.	I.D.	3 1/2	in	
Jars: Make	STERLING	Serial Number	#1	Test Tool Length	26	ft.	Tool Size	3 1/2-FH	in		
Did Well Flow?	NO	Reversed Out	NO	Anchor Length	20	ft.	Size	4 1/2-FH	in		
Main Hole Size	7 7/8	Tool Joint Size	4 1/2	XH in.	Surface Choke Size	1	in.	Bottom Choke Size	5/8	in	
Blow:	1st Open: WEAK (1/4" DEC. TO SURFACE)										
	2nd Open: NO BLOW (FLUSHED TOOL; NO HELP)										
Recovered	10	ft. of	DRILLING MUD								
Recovered		ft. of									
Recovered		ft. of									
Recovered		ft. of									
Recovered		ft. of									
Recovered		ft. of									
Recovered		ft. of									
Remarks:	TOTAL FLUID RECOVERY: 10' IN WEIGHT PIPE								Price Job		
									Other Charges		
									Insurance		

SHUT-IN TOOL RECOVERY GRINDOUT: 100% DRILLING MUD

		Total	
Time Set Packer(s)	2:20 A.M. A.M. P.M.	Time Started Off Bottom	4:05 A.M. A.M. P.M.
		Maximum Temperature	
		104	
Initial Hydrostatic Pressure.....	(A)	1633 P.S.I.	
Initial Flow Period..... Minutes	15	(B)	16 P.S.I. to (C) 16 P.S.I.
Initial Closed In Period..... Minutes	45	(D)	26 P.S.I.
Final Flow Period..... Minutes	15	(E)	17 P.S.I. to (F) 17 P.S.I.
Final Closed In Period..... Minutes	60	(G)	24 P.S.I.
Final Hydrostatic Pressure.....	(H)	1604 P.S.I.	

Drill Stem Test #3



DIAMOND TESTING
 P.O. Box 157
 HOISINGTON, KANSAS 67544
 (800) 542-7313

TIME ON: 14:00 8/1/15
 TIME OFF: 20:00 8/1/15

DRILL-STEM TEST TICKET
 FILE: STC/Wright2dst3

Company **GLOBE OPERATING INC** Lease & Well No. **WRIGHT #2**
 Contractor **DISCOVERY RIG 2** Charge to **GLOBE OPERATING INC**
 Elevation **1913 K.B** Formation **ARBUCKLE** Effective Pay _____ Ft. Ticket No. **J3352**
 Date **8/1/15** Sec. **32** Twp. **20 S** Range **13 W** County **BARTON** State **KANSAS**
 Test Approved By **KEITH REAVIS** Diamond Representative **JOHN RIEDL**

Formation Test No. **3** Interval Tested from **3541** ft. to **3555** ft. Total Depth **3555** ft.
 Packer Depth **3509** ft. Size **6 3/4** in. Packer depth _____ ft. Size **6 3/4** in.
 Packer Depth **3514** ft. Size **6 3/4** in. Packer depth _____ ft. Size **6 3/4** in.
 Depth of Selective Zone Set _____

Top Recorder Depth (Inside) **3517** ft. Recorder Number **30046** Cap. **6000** P.S.I.
 Bottom Recorder Depth (Outside) **3552** ft. Recorder Number **13498** Cap. **6000** P.S.I.
 Below Straddle Recorder Depth _____ ft. Recorder Number _____ Cap. _____ P.S.I.

Mud Type **CHEMICAL** Viscosity **58** Drill Collar Length **0** ft. I.D. **2 1/4** in.
 Weight **9.1** Water Loss **8.8** cc. Weight Pipe Length **310** ft. I.D. **2 7/8** in.
 Chlorides **8,500** P.P.M. Drill Pipe Length **3178** ft. I.D. **3 1/2** in.
 Jars: Make **STERLING** Serial Number **#1** Test Tool Length **26** ft. Tool Size **3 1/2-IF** in.
 Did Well Flow? **NO** Reversed Out **NO** Anchor Length **41** ft. Size **4 1/2-FH** in.
 Main Hole Size **7 7/8** Tool Joint Size **4 1/2 XH** in. Surface Choke Size **1** in. Bottom Choke Size **5/8** in.

Blow: 1st Open: **STRONG (B.O.B 8 MIN)** **1" BB**
 2nd Open: **STRONG (B.O.B 8 MIN.)** **1 1/2" BB**

Recovered **700** ft. of **GIP**
 Recovered **320** ft. of **GASSY OIL (20%GAS 80%OIL WITH SOME MUD CUT) GRAVITY 38 @ 60 DEGREES**
 Recovered _____ ft. of _____
 Recovered _____ ft. of _____
 Recovered _____ ft. of _____
 Recovered _____ ft. of _____

Remarks: **TOTAL FLUID RECOVERY: 320' (310 IN WEIGHT PIPE, 10' IN DRILL PIPE)**
SHUT-IN TOOL RECOVERY GRINDOUT: 10%GAS 90%OIL)
 Price Job _____
 Other Charges _____
 Insurance _____
 Total _____

Time Set Packer(s)	3:30 P.M. A.M. P.M.	Time Started Off Bottom	6:00 P.M. A.M. P.M.
		Maximum Temperature	
		108	
Initial Hydrostatic Pressure.....	(A)	1663 P.S.I.	
Initial Flow Period..... Minutes	15	(B)	33 P.S.I. to (C) 64 P.S.I.
Initial Closed In Period..... Minutes	45	(D)	1125 P.S.I.
Final Flow Period..... Minutes	30	(E)	80 P.S.I. to (F) 123 P.S.I.
Final Closed In Period..... Minutes	60	(G)	1112 P.S.I.
Final Hydrostatic Pressure.....	(H)	1622 P.S.I.	

Drill Stem Test #4



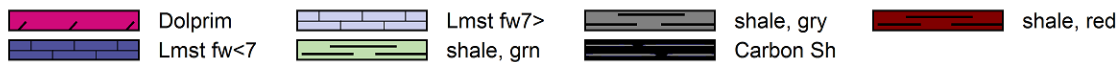
DIAMOND TESTING
 P.O. Box 157
 HOISINGTON, KANSAS 67544
 (800) 542-7313

TIME ON: 3:00 8/2/15
 TIME OFF: 9:00:00 8/2/15

DRILL-STEM TEST TICKET
FILE: STC/Wright2dst4

Company GLOBE OPERATING INC		Lease & Well No. WRIGHT #2	
Contractor DISCOVERY RIG 2		Charge to GLOBE OPERATING INC	
Elevation 1913 K.B	Formation ARBUCKLE	Effective Pay	Fl. Ticket No. J3353
Date 8/2/15	Sec. 32	Twp. 20 S	Range 13 W County BARTON State KANSAS
Test Approved By KEITH REAVIS		Diamond Representative JOHN RIEDL	
Formation Test No. 4	Interval Tested from 3559 ft. to 3565 ft.	Total Depth 3565 ft.	
Packer Depth 3554 ft.	Size 6 3/4 in.	Packer depth	ft. Size 6 3/4 in.
Packer Depth 3559 ft.	Size 6 3/4 in.	Packer depth	ft. Size 6 3/4 in.
Depth of Selective Zone Set			
Top Recorder Depth (Inside)	3562 ft.	Recorder Number 30046	Cap. 6000 P.S.I.
Bottom Recorder Depth (Outside)		Recorder Number	Cap. P.S.I.
Below Straddle Recorder Depth		Recorder Number	Cap. P.S.I.
Mud Type CHEMICAL	Viscosity 58	Drill Collar Length 0 ft.	I.D. 2 1/4 in.
Weight 9.1	Water Loss 8.8 cc.	Weight Pipe Length 310 ft.	I.D. 2 7/8 in.
Chlorides 8,500 P.P.M.		Drill Pipe Length 3223 ft.	I.D. 3 1/2 in.
Jars: Make STERLING	Serial Number #1	Test Tool Length 26 ft.	Tool Size 3 1/2-IF in.
Did Well Flow? NO	Reversed Out NO	Anchor Length 6 ft.	Size 4 1/2-FH in.
Main Hole Size 7 7/8	Tool Joint Size 4 1/2 XH in.	Surface Choke Size 1 in.	Bottom Choke Size 5/8 in.
Blow: 1st Open: STRONG (B.O.B 9 MIN)		1/4" BB	
2nd Open: STRONG (BUILT TO 9")		NO BB	
Recovered 400 ft. of GIP			
Recovered 100 ft. of GO (30% GAS 70% OIL)			
Recovered 40 ft. of WATER CHLORIDES 24,000 Ppm			
Recovered	ft. of		
Recovered	ft. of	Price / Job	
Recovered	ft. of	Other Charges	
Remarks: TOTAL FLUID RECOVERY: 140' IN WEIGHT PIPE	Insurance		
SHUT-IN TOOL RECOVERY GRINDOUT: 100% WATER			
		Total	
Time Set Packer(s) 4:30 A.M.	A.M. / P.M.	Time Started Off Bottom 7:00 A.M.	A.M. / P.M. Maximum Temperature 108
Initial Hydrostatic Pressure.....	(A)	1676 P.S.I.	
Initial Flow Period..... Minutes	(B)	15	(C) 24 P.S.I. to (C) 42 P.S.I.
Initial Closed In Period..... Minutes	(D)	45	(E) 642 P.S.I.
Final Flow Period..... Minutes	(E)	30	(F) 48 P.S.I. to (F) 64 P.S.I.
Final Closed In Period..... Minutes	(G)	60	(G) 417 P.S.I.
Final Hydrostatic Pressure.....	(H)	1636 P.S.I.	

ROCK TYPES



ACCESSORIES

MINERAL

- ▲ Chert, dark
- △ Dolomitic
- ✕ Mineral Crystals
- △ Chert White
- Mc Mica

FOSSIL

- ∩ Bioclastic or Fragments
- F Fossils < 20%
- ∅ Oolite
- ∩ Pellets
- ∩ Oomoldic
- ∩ Fusulinid

STRINGER

- Siltstone
- Shale
- red shale

TEXTURE

- C Chalky
- CX Cryptocrystalline
- L Lithogr

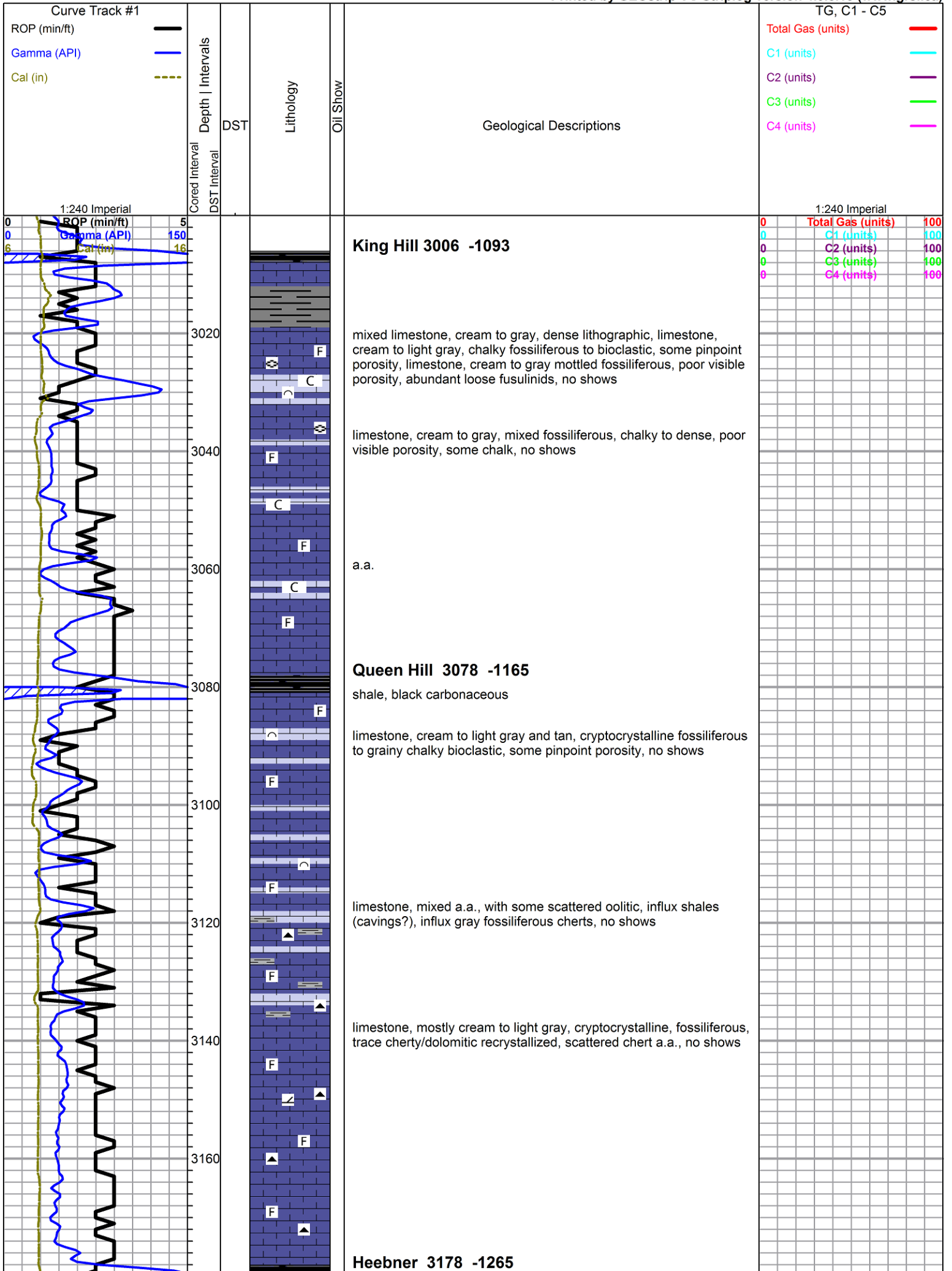
OTHER SYMBOLS

Oil Show

- Good Show
- Fair Show
- Poor Show
- Spotted or Trace
- Questionable Stn
- D Dead Oil Stn
- Fluorescence
- * Gas

DST

- DST Int
- DST alt
- Core
- || tail pipe



shale, black carbonaceous

Toronto 3200 -1287

limestone, white to light gray, microcrystalline, bioclastic to fossiliferous, grainy, chalky, poor visible porosity, abundant chalk, no shows

Douglas 3216 -1303

shale, gray, fissile, silty, micaceous, some red, abundant gray micaceous siltstones

Brown Lime 3293 -1380

limestone, gray to tan, cryptocrystalline, fossiliferous, some medium/large clasts, pyritic in part, dense, no shows

Lansing 3305 -1392

limestone, cream to gray, cryptocrystalline, fossiliferous, dense, no shows

limestone, cream to gray, cryptocrystalline, fossiliferous, dense, chalky in part, abundant gray and black shale, no shows

limestone, a.a. with influx light gray fossiliferous chert, no shows

limestone, light gray to cream, microcrystalline, fossiliferous, some scattered interclast porosity, spotty brown stain, faint odor, no show free oil, poor fluorescence, fair cut, some gray pelletal limestones

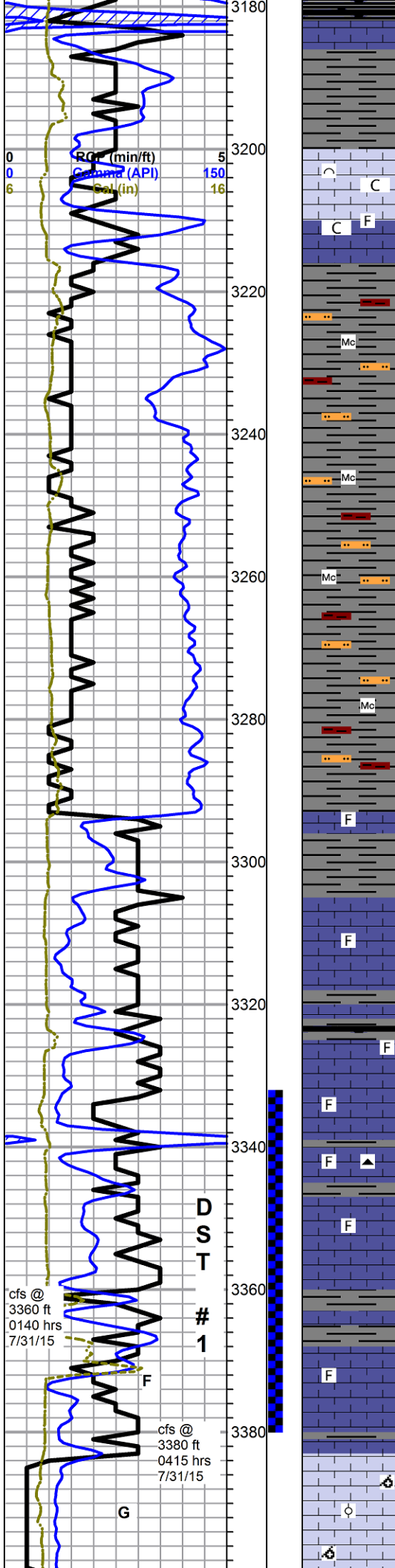
limestone, gray to dark gray, crypto-microcrystalline, fossiliferous, arenaceous to cherty, some small vugs and fractures, some iridescent stain, slight show heavy free oil, fleeting odor, no fluorescence, light cut

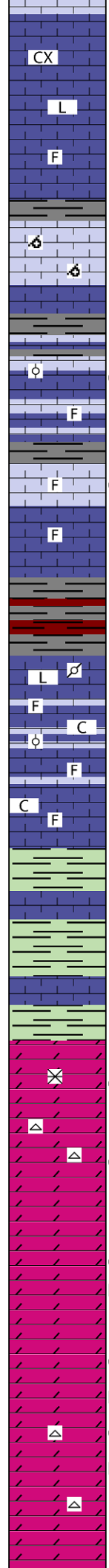
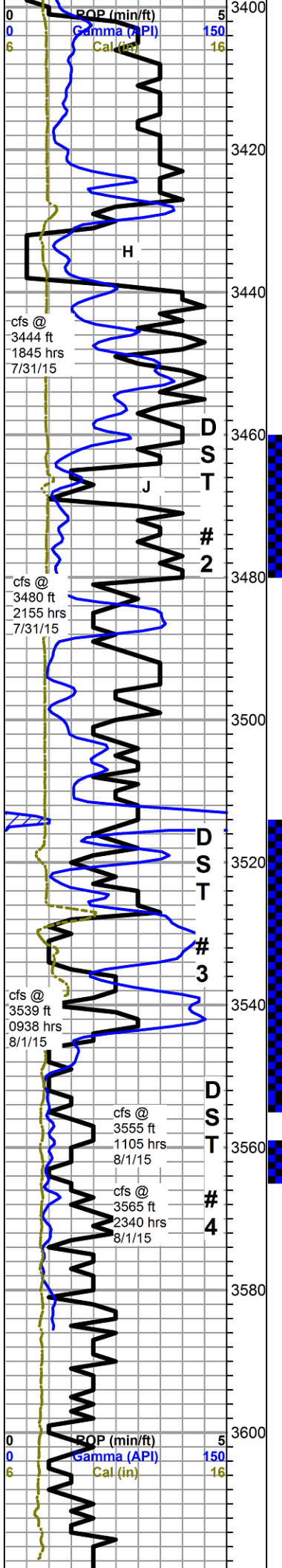
limestone, tan to light gray and cream, oomoldic, some recrystallized oolitic, good porosity, barren

0	Total Gas (units)	100
0	C1 (units)	100
0	C2 (units)	100
0	C3 (units)	100
0	C4 (units)	100

strap: 0.79 ft STB
deviation survey 1 deg.

Mud-Co Mud chk
@ 3380 ft.
0755 hrs. 7/31/15
Vis. 48 Wt. 9.1
PV 12 YP 13
WL 8.8
Cake 2/32,
pH 11.0
CHL 5300 ppm
Ca 20 ppm
Sol 5.4 LCM 0#
DMC \$0.00
CMC \$5577.98





limestone, mixed gray to cream to tan, cryptocrystalline, sub-lithographic to slightly fossiliferous, some chalky, mostly dense, no shows

limestone, tan to light gray and cream, oomoldic, smaller molds than G zone above, good porosity, barren

limestone, mixed fossiliferous, abundant oomoldic sluff from above, with some scattered white to gray oolitic, slight to dark black stain, no show free oil, trace bleeding sheen, no odor

limestone, light gray, micro-cryptocrystalline, sub-lithographic and dense to grainy/chalky, fossiliferous, good solution vug porosity, crystal lined, some secondary calcite crystals, good staining in vugs, fair show free oil, fair odor, poor fluorescence, excellent cut

Base KC 3480 -1567

limestone, cream to light gray and tan, cryptocrystalline, lithographic, to chalky fossiliferous, trace gray pelletal, good inter-pellet porosity and heavy asphaltic stain, no odor

3510 sample, limestone, cream, fossiliferous, good interclast porosity, slight stain, slight show free oil, limestone, brown, cryptocrystalline, dense, cherty, fossiliferous to oolitic, good solution vug porosity with stain, bleeding some oil with good streaming sheen, no odor in wet cup, no fluorescence, good cut

Simpson 3518 -1605

3520-3539 samples, limestones a.a. with scattered stain only
picking up some light green shales

flood limestones a.a. with some green shales

Arbuckle 3545 -1632

dolomite, mixed, reworked?, gray to brown, microcrystalline, sub-sucrosic to cryptocrystalline cherty, with abundant secondary dolomite crystals, some recrystallized fossiliferous, some pin-point to vuggy porosity, light to saturated brown stain, good show free oil and bleeding oil, strong sweet odor, bright green fluorescence

3555-3565 dolomite, mixed, white microcrystalline rhombic, recrystallized in part, black stain, some dolomite a.a., some brown sucrosic, trace oolitic, trace oomoldic, abundant cryptocrystalline, dense, some white boney tripolitic chert, overall varying degrees of staining, fair show free oil, fair odor, fair green fluorescence

3672- 3599 dolomite, white to light gray, micro-fine crystalline, sub-rhombic to highly recrystallized, some scattered good intercrystalline porosity, heavy black stain, streaming sheen, with dolomite, cream to light brown, cryptocrystalline, light stain to barren, dense, some sucrosic with large translucent secondary dolomite crystals, sour odor in wet cup

dolomite, white to light gray, micro-fine crystalline, sub-rhombic to highly recrystallized, some scattered good intercrystalline porosity, heavy black stain, streaming sheen, some saturated brown stain, slight show bleeding oil, abundant cryptocrystalline dolomite, cream to tan, mostly barren, dense, scattered light gray and white cherts

Rotary TD 3620 ft @ 1310 hrs 8/2/15
CasedHole Solutions Log TD
Complete Logging Operations 1915 hrs 8/2/15

0	Total Gas (units)	100
0	C1 (units)	100
0	C2 (units)	100
0	C3 (units)	100
0	C4 (units)	100

Mud-Co Mud chk @ 3530 ft. 0910 hrs. 8/1/15 Vis. 58 Wt. 9.0 PV 14 YP 17 WL 9.2 Cake 2/32, pH 11.0 CHL 8400 ppm Ca 40 ppm Sol 4.5 LCM 0# DMC \$823.10 CMC \$6401.08		
Mud-Co Mud chk @ 3565ft. 0855 hrs. 8/2/15 Vis. 55 Wt. 9.1 PV 12 YP 21 WL 10.6 Cake 2/32, pH 10.0 CHL 11,400 ppm Ca 60 ppm Sol 5.0 LCM 0# DMC \$0.00 CMC \$6401.08		

0	Total Gas (units)	100
0	C1 (units)	100
0	C2 (units)	100
0	C3 (units)	100
0	C4 (units)	100

3620

