



**TRILOBITE TESTING, INC.**

# DRILL STEM TEST REPORT

Herman L Loeb LLC  
 PO Box 838  
 Lawrenceville, IL 62439  
 ATTN: Jon Christensen

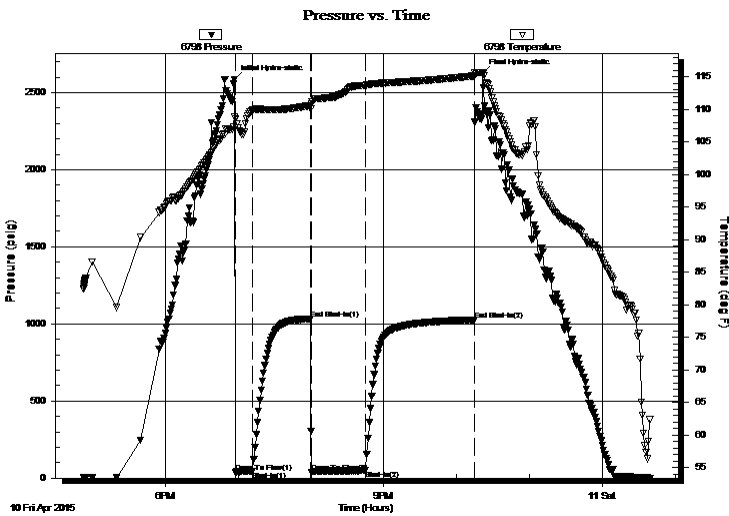
**8-30S-18W Kiowa**  
**Petra 1-8**  
 Job Ticket: 59765 **DST#: 4**  
 Test Start: 2015.04.10 @ 16:52:46

## GENERAL INFORMATION:

Formation: **Mississippi**  
 Deviated: No Whipstock: ft (KB)  
 Time Tool Opened: 18:57:46  
 Time Test Ended: 00:39:46  
 Interval: **5010.00 ft (KB) To 5062.00 ft (KB) (TVD)**  
 Total Depth: 5062.00 ft (KB) (TVD)  
 Hole Diameter: 7.88 inches Hole Condition: Good  
 Test Type: Conventional Bottom Hole (Reset)  
 Tester: Leal Cason  
 Unit No: 74  
 Reference Elevations: 2243.00 ft (KB)  
 2230.00 ft (CF)  
 KB to GR/CF: 13.00 ft

**Serial #: 6798 Inside**  
 Press @ Run Depth: 51.72 psig @ 5011.00 ft (KB) Capacity: 8000.00 psig  
 Start Date: 2015.04.10 End Date: 2015.04.11 Last Calib.: 2015.04.11  
 Start Time: 16:52:47 End Time: 00:39:46 Time On Btm: 2015.04.10 @ 18:57:01  
 Time Off Btm: 2015.04.10 @ 22:21:31

**TEST COMMENT:** IF: Fair Blow , BOB in 9 minutes  
 IS: No Blow Back  
 FF: Strong Blow , BOB in 10 seconds, GTS in 36 minutes, Gauged & Caught Sample  
 FS: No Blow Back



## PRESSURE SUMMARY

Time (Min.)	Pressure (psig)	Temp (deg F)	Annotation
0	2586.42	108.83	Initial Hydro-static
1	37.79	108.55	Open To Flow (1)
15	45.61	109.86	Shut-In(1)
63	1033.67	110.59	End Shut-In(1)
64	38.79	110.87	Open To Flow (2)
108	51.72	113.67	Shut-In(2)
198	1025.70	115.13	End Shut-In(2)
205	2625.17	115.67	Final Hydro-static

## Recovery

Length (ft)	Description	Volume (bbl)
0.00	4932 GIP	0.00
65.00	GCM 5%G 95%M	0.37

\* Recovery from multiple tests

## Gas Rates

	Choke (inches)	Pressure (psig)	Gas Rate (Mcf/d)
First Gas Rate	0.13	3.00	6.51
Last Gas Rate	0.13	4.00	6.89



**TRILOBITE  
TESTING, INC.**

# DRILL STEM TEST REPORT

**FLUID SUMMARY**

Herman L Loeb LLC  
PO Box 838  
Lawrenceville, IL 62439  
ATTN: Jon Christensen

**8-30S-18W Kiowa**  
**Petra 1-8**  
Job Ticket: 59765      **DST#: 4**  
Test Start: 2015.04.10 @ 16:52:46

## Mud and Cushion Information

Mud Type: Gel Chem	Cushion Type:	Oil API:	deg API
Mud Weight: 9.00 lb/gal	Cushion Length: ft	Water Salinity:	ppm
Viscosity: 72.00 sec/qt	Cushion Volume: bbl		
Water Loss: 9.19 in <sup>3</sup>	Gas Cushion Type:		
Resistivity: ohm.m	Gas Cushion Pressure: psig		
Salinity: 8000.00 ppm			
Filter Cake: 0.02 inches			

## Recovery Information

Recovery Table

Length ft	Description	Volume bbl
0.00	4932 GIP	0.000
65.00	GCM 5%G 95%M	0.365

Total Length: 65.00 ft      Total Volume: 0.365 bbl  
 Num Fluid Samples: 0      Num Gas Bombs: 0      Serial #:  
 Laboratory Name:      Laboratory Location:  
 Recovery Comments:



**TRILOBITE  
TESTING, INC.**

## DRILL STEM TEST REPORT

**GAS RATES**

Herman L Loeb LLC  
PO Box 838  
Lawrenceville, IL 62439  
ATTN: Jon Christensen

**8-30S-18W Kiowa**  
**Petra 1-8**  
Job Ticket: 59765      **DST#: 4**  
Test Start: 2015.04.10 @ 16:52:46

### Gas Rates Information

Temperature: 59 (deg F)  
Relative Density: 0.65  
Z Factor: 0.8

Gas Rates Table

Flow Period	Elapsed Time	Choke (inches)	Pressure (psig)	Gas Rate (Mcf/d)
2	40	0.13	3.00	6.51
2	45	0.13	4.00	6.89

### Pressure vs. Time

