



## DRILL STEM TEST REPORT

Prepared For: **K3 Oil & Gas**

211 Highland Cross Ste 250  
Houston, TX 77073

ATTN: Austin Garner

**Black #6-30**

**30-27S-31W Haskell,KS**

Start Date: 2015.08.20 @ 13:03:57

End Date: 2015.08.20 @ 19:06:12

Job Ticket #: 57904                      DST #: 1

Trilobite Testing, Inc  
1515 Commerce Parkway Hays, KS 67601  
ph: 785-625-4778 fax: 785-625-5620

Printed: 2015.08.25 @ 08:40:34



**TRILOBITE  
TESTING, INC**

# DRILL STEM TEST REPORT

K3 Oil & Gas  
211 Highland Cross Ste 250  
Houston, TX 77073  
ATTN: Austin Garner

**30-27S-31W Haskell,KS**

**Black #6-30**

Job Ticket: 57904

**DST#: 1**

Test Start: 2015.08.20 @ 13:03:57

## GENERAL INFORMATION:

Formation: **Pawnee**  
 Deviated: No Whipstock: ft (KB)  
 Time Tool Opened: 15:10:12  
 Time Test Ended: 19:06:12  
 Interval: **4805.00 ft (KB) To 4833.00 ft (KB) (TVD)**  
 Total Depth: 4833.00 ft (KB) (TVD)  
 Hole Diameter: 7.88 inches Hole Condition: Good  
 Test Type: Conventional Bottom Hole (Initial)  
 Tester: Leal Cason  
 Unit No: 74  
 Reference Elevations: 2870.00 ft (KB)  
 2858.00 ft (CF)  
 KB to GR/CF: 12.00 ft

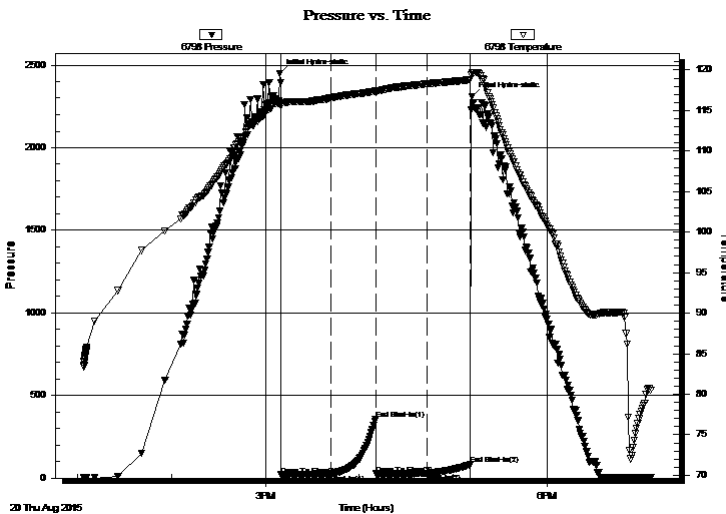
## Serial #: 6798

Inside

Press@RunDepth: 28.71 psig @ 4806.00 ft (KB) Capacity: 8000.00 psig  
 Start Date: 2015.08.20 End Date: 2015.08.20 Last Calib.: 2015.08.20  
 Start Time: 13:03:58 End Time: 19:06:12 Time On Btm: 2015.08.20 @ 15:09:12  
 Time Off Btm: 2015.08.20 @ 17:12:12

TEST COMMENT: IF: Weak Surface Blow  
 IS: No Blow Back  
 FF: Weak Surface Blow, Dead @ 8 minutes  
 FS: No Blow Back

## PRESSURE SUMMARY



Time (Min.)	Pressure (psig)	Temp (deg F)	Annotation
0	2450.12	115.88	Initial Hydro-static
1	19.81	115.57	Open To Flow (1)
33	24.95	116.58	Shut-In(1)
62	357.87	117.39	End Shut-In(1)
62	25.23	117.21	Open To Flow (2)
94	28.71	118.32	Shut-In(2)
122	81.89	118.80	End Shut-In(2)
123	2308.39	119.67	Final Hydro-static

## Recovery

Length (ft)	Description	Volume (bbl)
5.00	SGCM 2%G 98%M	0.02

## Gas Rates

Choke (inches)	Pressure (psig)	Gas Rate (Mcf/d)



# DRILL STEM TEST REPORT

K3 Oil & Gas  
 211 Highland Cross Ste 250  
 Houston, TX 77073  
 ATTN: Austin Garner

**30-27S-31W Haskell,KS**

**Black #6-30**

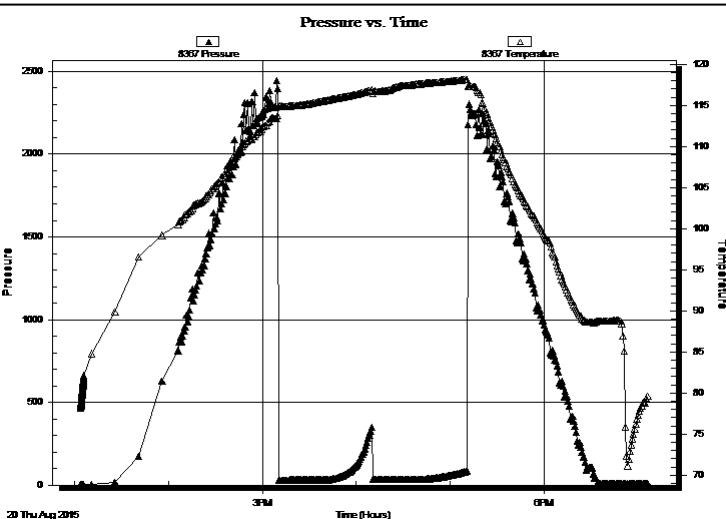
Job Ticket: 57904      **DST#: 1**  
 Test Start: 2015.08.20 @ 13:03:57

### GENERAL INFORMATION:

Formation: <b>Pawnee</b>		Test Type: Conventional Bottom Hole (Initial)
Deviated: No Whipstock:                                 ft (KB)		Tester: Leal Cason
Time Tool Opened: 15:10:12		Unit No: 74
Time Test Ended: 19:06:12		
<b>Interval: 4805.00 ft (KB) To 4833.00 ft (KB) (TVD)</b>	Reference Elevations:	2870.00 ft (KB)
Total Depth: 4833.00 ft (KB) (TVD)		2858.00 ft (CF)
Hole Diameter: 7.88 inches	Hole Condition: Good	KB to GR/CF: 12.00 ft

<b>Serial #: 8367      Outside</b>			
Press@RunDepth:                                 psig @ 4806.00 ft (KB)	Capacity:	8000.00 psig	
Start Date:   2015.08.20      End Date:   2015.08.20	Last Calib.:	2015.08.20	
Start Time:   13:03:58      End Time:   19:06:12	Time On Btm:		
	Time Off Btm:		

**TEST COMMENT:** IF: Weak Surface Blow  
 IS: No Blow Back  
 FF: Weak Surface Blow, Dead @ 8 minutes  
 FS: No Blow Back



### PRESSURE SUMMARY

Time (Min.)	Pressure (psig)	Temp (deg F)	Annotation

### Recovery

Length (ft)	Description	Volume (bbl)
5.00	SGCM 2%G 98%M	0.02

### Gas Rates

Choke (inches)	Pressure (psig)	Gas Rate (Mcf/d)



**TRILOBITE  
TESTING, INC**

# DRILL STEM TEST REPORT

**TOOL DIAGRAM**

K3 Oil & Gas  
211 Highland Cross Ste 250  
Houston, TX 77073  
ATTN: Austin Garner

**30-27S-31W Haskell,KS**  
**Black #6-30**  
Job Ticket: 57904      **DST#: 1**  
Test Start: 2015.08.20 @ 13:03:57

**Tool Information**

Drill Pipe:	Length: 4607.00 ft	Diameter: 3.80 inches	Volume: 64.62 bbl	Tool Weight: 2100.00 lb
Heavy Wt. Pipe:	Length: 0.00 ft	Diameter: 0.00 inches	Volume: 0.00 bbl	Weight set on Packer: 25000.00 lb
Drill Collar:	Length: 183.00 ft	Diameter: 2.25 inches	Volume: 0.90 bbl	Weight to Pull Loose: 80000.00 lb
			<u>Total Volume: 65.52 bbl</u>	Tool Chased ft
Drill Pipe Above KB:	11.00 ft			String Weight: Initial 75000.00 lb
Depth to Top Packer:	4805.00 ft			Final 75000.00 lb
Depth to Bottom Packer:	ft			
Interval between Packers:	28.00 ft			
Tool Length:	54.00 ft			
Number of Packers:	2	Diameter: 6.75 inches		

Tool Comments: Shale Packer On Bottom

<b>Tool Description</b>	<b>Length (ft)</b>	<b>Serial No.</b>	<b>Position</b>	<b>Depth (ft)</b>	<b>Accum. Lengths</b>
-------------------------	--------------------	-------------------	-----------------	-------------------	-----------------------

Shut In Tool	5.00			4784.00	
Hydraulic tool	5.00			4789.00	
Jars	5.00			4794.00	
Safety Joint	2.00			4796.00	
Packer	5.00			4801.00	26.00      Bottom Of Top Packer
Packer	4.00			4805.00	
Stubb	1.00			4806.00	
Recorder	0.00	6798	Inside	4806.00	
Recorder	0.00	8367	Outside	4806.00	
Perforations	24.00			4830.00	
Bullnose	3.00			4833.00	28.00      Bottom Packers & Anchor

**Total Tool Length: 54.00**



**TRILOBITE  
TESTING, INC**

# DRILL STEM TEST REPORT

## FLUID SUMMARY

K3 Oil & Gas  
211 Highland Cross Ste 250  
Houston, TX 77073  
ATTN: Austin Garner

**30-27S-31W Haskell,KS**  
**Black #6-30**  
Job Ticket: 57904      **DST#: 1**  
Test Start: 2015.08.20 @ 13:03:57

### Mud and Cushion Information

Mud Type: Gel Chem	Cushion Type:	Oil API:	deg API
Mud Weight: 9.00 lb/gal	Cushion Length: ft	Water Salinity:	ppm
Viscosity: 68.00 sec/qt	Cushion Volume: bbl		
Water Loss: 7.59 in <sup>3</sup>	Gas Cushion Type:		
Resistivity: ohm.m	Gas Cushion Pressure: psig		
Salinity: 1400.00 ppm			
Filter Cake: 0.02 inches			

### Recovery Information

Recovery Table

Length ft	Description	Volume bbl
5.00	SGCM 2%G 98%M	0.025

Total Length: 5.00 ft      Total Volume: 0.025 bbl  
Num Fluid Samples: 0      Num Gas Bombs: 0      Serial #:  
Laboratory Name:      Laboratory Location:  
Recovery Comments:

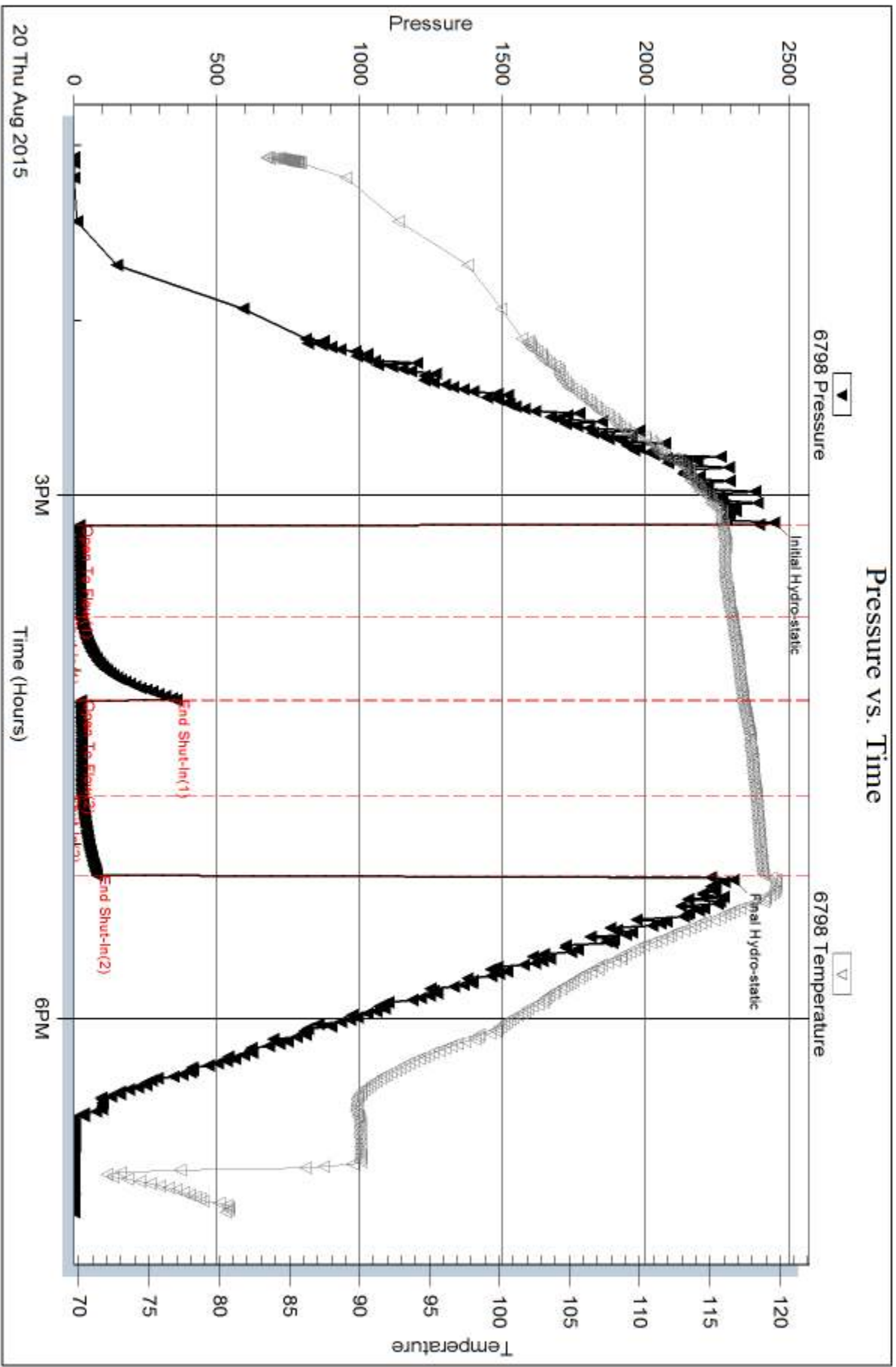
Serial #: 6798

Inside

K3 Oil & Gas

Block #6-30

DST Test Number: 1

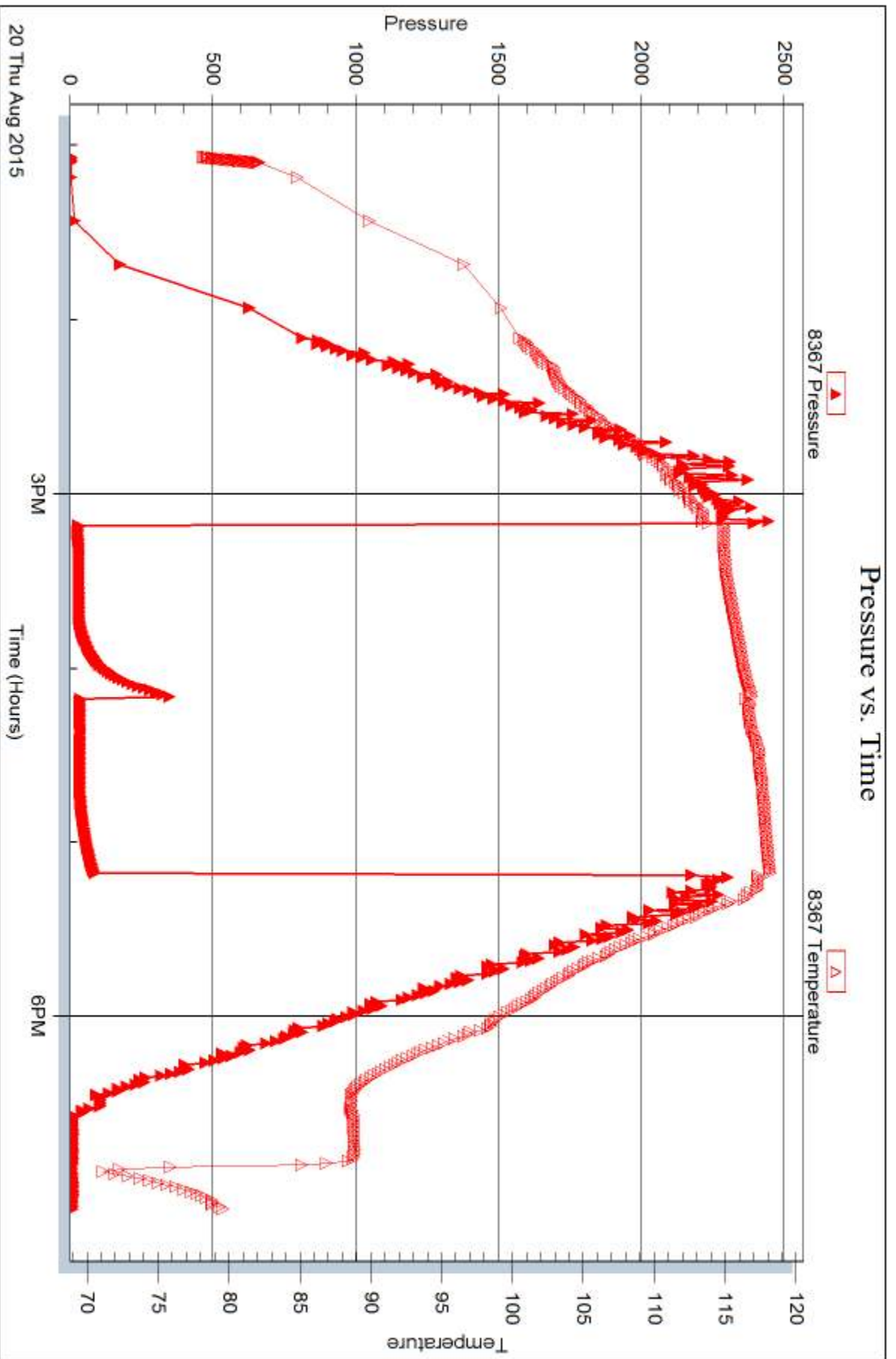


Serial #: 8367

Outside K3 Oil & Gas

Block #6-30

DST Test Number: 1



Trilobite Testing, Inc

Ref. No: 57904

Printed: 2015.08.25 @ 08:40:36



## DRILL STEM TEST REPORT

Prepared For: **K3 Oil & Gas**

211 Highland Cross Ste 250  
Houston, TX 77073

ATTN: Austin Garner

**Black #6-30**

**30-27S-31W Haskell,KS**

Start Date: 2015.08.21 @ 16:58:05

End Date: 2015.08.22 @ 00:02:50

Job Ticket #: 57905                      DST #: 2

Trilobite Testing, Inc  
1515 Commerce Parkway Hays, KS 67601  
ph: 785-625-4778 fax: 785-625-5620

Printed: 2015.08.25 @ 08:39:45





**TRILOBITE  
TESTING, INC**

# DRILL STEM TEST REPORT

K3 Oil & Gas  
211 Highland Cross Ste 250  
Houston, TX 77073  
ATTN: Austin Garner

**30-27S-31W Haskell,KS**

**Black #6-30**

Job Ticket: 57905

**DST#: 2**

Test Start: 2015.08.21 @ 16:58:05

## GENERAL INFORMATION:

Formation: **Cherokee**  
 Deviated: No Whipstock: ft (KB)  
 Test Type: Conventional Bottom Hole (Reset)  
 Time Tool Opened: 18:57:20  
 Tester: Leal Cason  
 Time Test Ended: 00:02:50  
 Unit No: 74  
 Interval: **4930.00 ft (KB) To 4960.00 ft (KB) (TVD)**  
 Reference Elevations: 2870.00 ft (KB)  
 Total Depth: 4960.00 ft (KB) (TVD)  
 2858.00 ft (CF)  
 Hole Diameter: 7.88 inches  
 Hole Condition: Good  
 KB to GR/CF: 12.00 ft

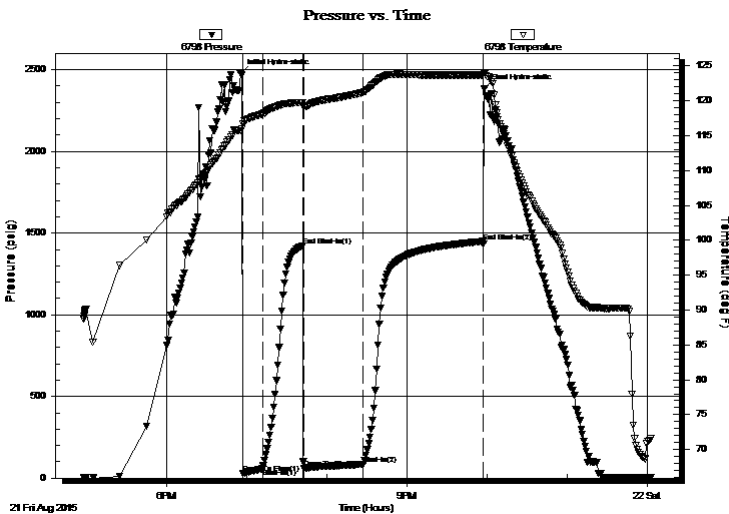
## Serial #: 6798

Inside

Press@RunDepth: 84.48 psig @ 4931.00 ft (KB) Capacity: 8000.00 psig  
 Start Date: 2015.08.21 End Date: 2015.08.22 Last Calib.: 2015.08.22  
 Start Time: 16:58:06 End Time: 00:02:50 Time On Btm: 2015.08.21 @ 18:55:20  
 Time Off Btm: 2015.08.21 @ 21:58:05

TEST COMMENT: IF: Strong Blow , BOB in 2 1/2 minutes  
 IS: No Blow Back  
 FF: Strong Blow , BOB Immediate  
 FS: Weak Surface Blow Back

## PRESSURE SUMMARY



Time (Min.)	Pressure (psig)	Temp (deg F)	Annotation
0	2477.94	115.68	Initial Hydro-static
2	29.87	116.65	Open To Flow (1)
17	58.86	118.09	Shut-In(1)
47	1423.69	119.77	End Shut-In(1)
48	59.98	119.19	Open To Flow (2)
92	84.48	121.20	Shut-In(2)
182	1448.65	123.70	End Shut-In(2)
183	2382.40	124.06	Final Hydro-static

## Recovery

Length (ft)	Description	Volume (bbl)
0.00	3150 GIP	0.00
203.00	GOCM 10%G 40%O 50%M	1.18

## Gas Rates

	Choke (inches)	Pressure (psig)	Gas Rate (Mcf/d)

\* Recovery from multiple tests



# DRILL STEM TEST REPORT

K3 Oil & Gas  
 211 Highland Cross Ste 250  
 Houston, TX 77073  
 ATTN: Austin Garner

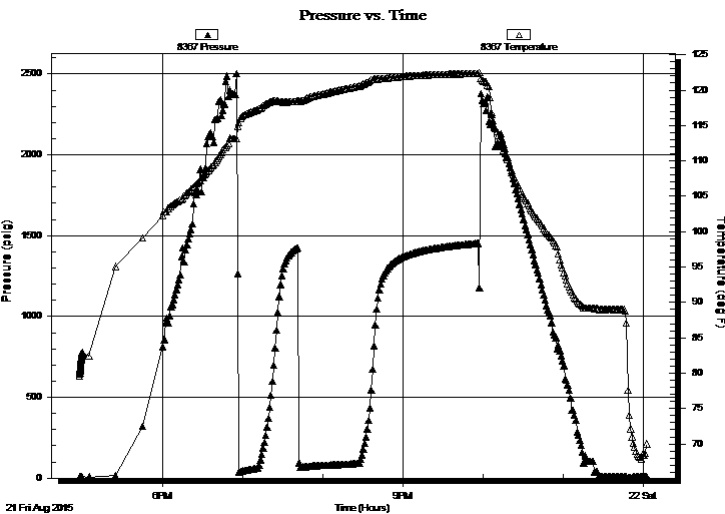
**30-27S-31W Haskell, KS**  
**Black #6-30**  
 Job Ticket: 57905 **DST#: 2**  
 Test Start: 2015.08.21 @ 16:58:05

## GENERAL INFORMATION:

Formation: **Cherokee**  
 Deviated: No Whipstock: ft (KB)  
 Time Tool Opened: 18:57:20  
 Time Test Ended: 00:02:50  
**Interval: 4930.00 ft (KB) To 4960.00 ft (KB) (TVD)**  
 Total Depth: 4960.00 ft (KB) (TVD)  
 Hole Diameter: 7.88 inches Hole Condition: Good  
 Test Type: Conventional Bottom Hole (Reset)  
 Tester: Leal Cason  
 Unit No: 74  
 Reference Elevations: 2870.00 ft (KB)  
 2858.00 ft (CF)  
 KB to GR/CF: 12.00 ft

**Serial #: 8367 Outside**  
 Press@RunDepth: psig @ 4931.00 ft (KB) Capacity: 8000.00 psig  
 Start Date: 2015.08.21 End Date: 2015.08.22 Last Calib.: 2015.08.22  
 Start Time: 16:58:06 End Time: 00:02:50 Time On Btm:  
 Time Off Btm:

**TEST COMMENT:** IF: Strong Blow , BOB in 2 1/2 minutes  
 IS: No Blow Back  
 FF: Strong Blow , BOB Immediate  
 FS: Weak Surface Blow Back



## PRESSURE SUMMARY

Time (Min.)	Pressure (psig)	Temp (deg F)	Annotation

## Recovery

Length (ft)	Description	Volume (bbl)
0.00	3150 GIP	0.00
203.00	GOCM 10%G 40%O 50%M	1.18

\* Recovery from multiple tests

## Gas Rates

Choke (inches)	Pressure (psig)	Gas Rate (Mcf/d)



**TRILOBITE  
TESTING, INC**

# DRILL STEM TEST REPORT

**TOOL DIAGRAM**

K3 Oil & Gas  
211 Highland Cross Ste 250  
Houston, TX 77073  
ATTN: Austin Garner

**30-27S-31W Haskell,KS**  
**Black #6-30**  
Job Ticket: 57905      **DST#: 2**  
Test Start: 2015.08.21 @ 16:58:05

**Tool Information**

Drill Pipe:	Length: 4733.00 ft	Diameter: 3.80 inches	Volume: 66.39 bbl	Tool Weight:	2100.00 lb
Heavy Wt. Pipe:	Length: 0.00 ft	Diameter: 0.00 inches	Volume: 0.00 bbl	Weight set on Packer:	25000.00 lb
Drill Collar:	Length: 183.00 ft	Diameter: 2.25 inches	Volume: 0.90 bbl	Weight to Pull Loose:	90000.00 lb
			<u>Total Volume: 67.29 bbl</u>	Tool Chased	ft
Drill Pipe Above KB:	12.00 ft			String Weight: Initial	77000.00 lb
Depth to Top Packer:	4930.00 ft			Final	78000.00 lb
Depth to Bottom Packer:	ft				
Interval between Packers:	30.00 ft				
Tool Length:	56.00 ft				
Number of Packers:	2	Diameter: 6.75 inches			

Tool Comments: Shale Packer On Bottom

<b>Tool Description</b>	<b>Length (ft)</b>	<b>Serial No.</b>	<b>Position</b>	<b>Depth (ft)</b>	<b>Accum. Lengths</b>
-------------------------	--------------------	-------------------	-----------------	-------------------	-----------------------

Shut In Tool	5.00			4909.00	
Hydraulic tool	5.00			4914.00	
Jars	5.00			4919.00	
Safety Joint	2.00			4921.00	
Packer	5.00			4926.00	26.00      Bottom Of Top Packer
Packer	4.00			4930.00	
Stubb	1.00			4931.00	
Recorder	0.00	6798	Inside	4931.00	
Recorder	0.00	8367	Outside	4931.00	
Perforations	26.00			4957.00	
Bullnose	3.00			4960.00	30.00      Bottom Packers & Anchor

**Total Tool Length: 56.00**



**TRILOBITE  
TESTING, INC**

# DRILL STEM TEST REPORT

## FLUID SUMMARY

K3 Oil & Gas  
211 Highland Cross Ste 250  
Houston, TX 77073  
ATTN: Austin Garner

**30-27S-31W Haskell,KS**  
**Black #6-30**  
Job Ticket: 57905      **DST#: 2**  
Test Start: 2015.08.21 @ 16:58:05

### Mud and Cushion Information

Mud Type: Gel Chem	Cushion Type:	Oil API:	deg API
Mud Weight: 9.00 lb/gal	Cushion Length: ft	Water Salinity:	ppm
Viscosity: 68.00 sec/qt	Cushion Volume: bbl		
Water Loss: 7.59 in <sup>3</sup>	Gas Cushion Type:		
Resistivity: ohm.m	Gas Cushion Pressure: psig		
Salinity: 1400.00 ppm			
Filter Cake: 0.02 inches			

### Recovery Information

Recovery Table

Length ft	Description	Volume bbl
0.00	3150 GIP	0.000
203.00	GOCM 10%G 40%O 50%M	1.181

Total Length: 203.00 ft      Total Volume: 1.181 bbl  
Num Fluid Samples: 0      Num Gas Bombs: 0      Serial #:  
Laboratory Name:      Laboratory Location:  
Recovery Comments:

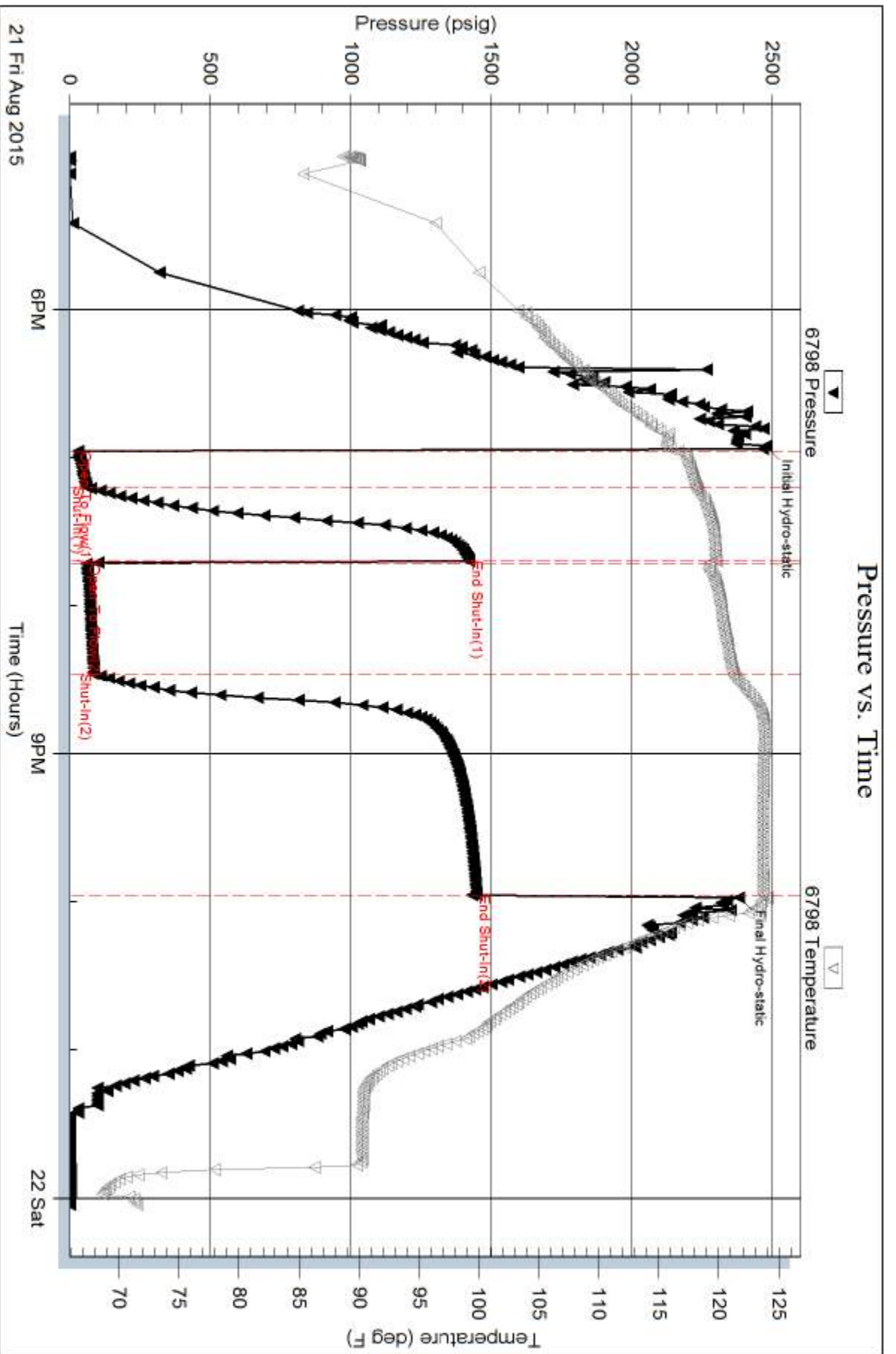
Serial #: 6798

Inside

K3 Oil & Gas

Block #6-30

DST Test Number: 2



Trilobite Testing, Inc

Ref. No: 57905

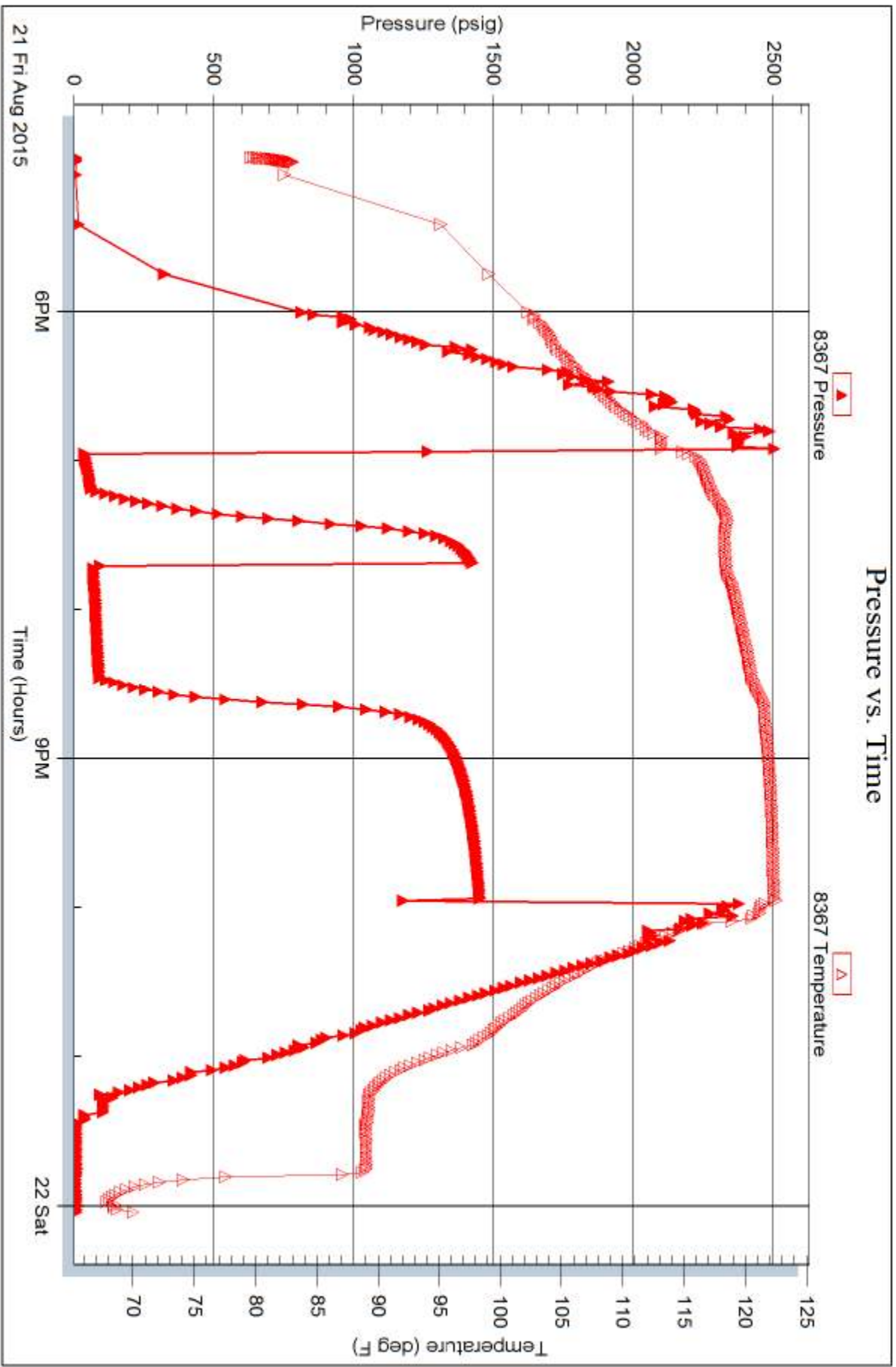
Printed: 2015.08.25 @ 08:39:48

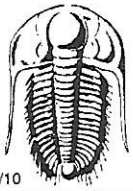
Serial #: 8367

Outside K3 Oil & Gas

Block #6-30

DST Test Number: 2





# TRILOBITE TESTING INC.

1515 Commerce Parkway • Hays, Kansas 67601

## Test Ticket

NO. 57904

Well Name & No. L-30 Black Test No. 1 Date 08/20/15  
 Company K3 Oil & Gas Elevation 2870 KB 2858 GL  
 Address 211 Highland Cross Ste 250 Houston, TX 77073  
 Co. Rep / Geo. Austin Garner Rig Duke 7  
 Location: Sec. 30 Twp. 27S Rge. 31W Co. ~~Rawl~~ Haskell State Pawnee

Interval Tested 4805 - 4833 Zone Tested Pawnee  
 Anchor Length 28 Drill Pipe Run 4607 Mud Wt. 9.2  
 Top Packer Depth 4800 Drill Collars Run 183 Vis 68  
 Bottom Packer Depth 4805 Wt. Pipe Run 0 WL 7.6  
 Total Depth 4833 Chlorides 1400 ppm System LCM 4

Blow Description IF: weak Surface Blow

ISI: No Blow Back

FF: weak surface Blow, dead @ 8 minutes

FSI: No Blow Back

Rec	Feet of	%gas	%oil	%water	%mud
<u>5</u>	<u>500m</u>	<u>2</u>		<u>98</u>	
Rec	Feet of	%gas	%oil	%water	%mud
Rec	Feet of	%gas	%oil	%water	%mud
Rec	Feet of	%gas	%oil	%water	%mud
Rec	Feet of	%gas	%oil	%water	%mud

Rec Total 5 BHT 119 Gravity NIC API RW NIC @ NIC °F Chlorides NIC ppm

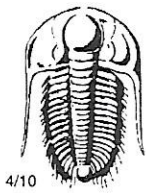
(A) Initial Hydrostatic 2450  Test 1150  
 (B) First Initial Flow 20  Jars 250  
 (C) First Final Flow 25  Safety Joint 75  
 (D) Initial Shut-In 358  Circ Sub \_\_\_\_\_  
 (E) Second Initial Flow 25  Hourly Standby \_\_\_\_\_  
 (F) Second Final Flow 29  Mileage 260 115  
 (G) Final Shut-In 82  Sampler \_\_\_\_\_  
 (H) Final Hydrostatic 2308  Straddle \_\_\_\_\_

T-On Location 12:45  
 T-Started 13:03  
 T-Open 15:10  
 T-Pulled 17:10  
 T-Out 19:06  
 Comments Motel

Ruined Shale Packer \_\_\_\_\_  
 Ruined Packer 320  
 Extra Copies \_\_\_\_\_  
 Sub Total 320  
 Total 2160  
 MP/DST Disc't \_\_\_\_\_  
 Extra Packer \_\_\_\_\_  
 Extra Recorder \_\_\_\_\_  
 Day Standby \_\_\_\_\_  
 Accessibility \_\_\_\_\_  
 Sub Total 1840

Approved By \_\_\_\_\_

Our Representative [Signature]



# TRILOBITE TESTING INC.

1515 Commerce Parkway • Hays, Kansas 67601

## Test Ticket

NO. **57905**

Well Name & No. 6-30 Black Test No. 2 Date 08/21/15  
 Company K 3 Oil + Gas Elevation 2970 KB 2858 GL  
 Address 211 Highland Cross Ste 250 Houston, TX 77073  
 Co. Rep / Geo. Austin Garner Rig Duke 7  
 Location: Sec. 30 Twp. 27S Rge. 31W Co. Haskell State KS

Interval Tested 4930 - 4960 Zone Tested Cherokee  
 Anchor Length 30 Drill Pipe Run 4607 Mud Wt. 9.2  
 Top Packer Depth 4925 Drill Collars Run 183 Vis 49  
 Bottom Packer Depth 4930 Wt. Pipe Run 0 WL 8.8  
 Total Depth 4960 Chlorides 2200 ppm System LCM 4

Blow Description IF: Strong Blow, BOB in 2 1/2 minutes  
ISI: No Blow Back

FF: Strong Blow, BOB immediate

FST: weak surface Blow Back

Rec	Feet of	%gas	%oil	%water	%mud
<u>3150</u>	<u>GIP</u>				
<u>203</u>	<u>GOCM</u>	<u>10%</u>	<u>40%</u>	<u>50%</u>	
Rec	Feet of	%gas	%oil	%water	%mud
Rec	Feet of	%gas	%oil	%water	%mud
Rec	Feet of	%gas	%oil	%water	%mud

Rec Total 203 BHT 124 Gravity N/C API RW N/C @ N/C F Chlorides N/C ppm

(A) Initial Hydrostatic 2478  Test 1150 T-On Location 15:45  
 (B) First Initial Flow 30  Jars 250 T-Started 16:58  
 (C) First Final Flow 59  Safety Joint 75 T-Open 18:57  
 (D) Initial Shut-In 1424  Circ Sub          T-Pulled 21:57  
 (E) Second Initial Flow 60  Hourly Standby          T-Out 00:02  
 (F) Second Final Flow 85  Mileage (260) 115+115 Comments Loaded Tools @  
 (G) Final Shut-In 1449  Sampler          12:45 on 08/24  
 (H) Final Hydrostatic 2382  Straddle          Motel 3 days  
 Ruined Shale Packer 350  
 Ruined Packer         

Initial Open 15  Extra Packer           Extra Copies           
 Initial Shut-In 30  Extra Recorder          Sub Total 850+350  
 Final Flow 45  Day Standby 1.5d 24.75h Total 3155  
 Final Shut-In 90  Accessibility          MP/DST Disc't           
 Sub Total 1955

Approved By \_\_\_\_\_ Our Representative [Signature]

Trilobite Testing Inc. shall not be liable for damaged of any kind of the property or personnel of the one for whom a test is made, or for any loss suffered or sustained, directly or indirectly, through the use of its equipment, or its statements or opinion concerning the results of any test, tools lost or damaged in the hole shall be paid for at cost by the party for whom the test is made.