



**TRILOBITE TESTING, INC.**

# DRILL STEM TEST REPORT

Blue Goose Drilling Co, Inc

32-17-27w Lane, Ks

P.O. Box 1413  
Greatbend, Ks 67530

**Borell G #1**

Job Ticket: 61730

**DST#: 2**

ATTN: Ken Wallace

Test Start: 2015.07.02 @ 13:16:04

## GENERAL INFORMATION:

Formation: **Marmaton**

Deviated: No Whipstock: ft (KB)

Time Tool Opened: 15:08:34

Time Test Ended: 17:39:34

Test Type: Conventional Bottom Hole (Reset)

Tester: Brandon Turley

Unit No: 79

**Interval: 4329.00 ft (KB) To 4415.00 ft (KB) (TVD)**

Reference Elevations: 2682.00 ft (KB)

Total Depth: 4415.00 ft (KB) (TVD)

2675.00 ft (CF)

Hole Diameter: 7.88 inches Hole Condition: Good

KB to GR/CF: 7.00 ft

**Serial #: 8166 Outside**

Press @ Run Depth: 24.30 psig @ 4330.00 ft (KB)

Capacity: 8000.00 psig

Start Date: 2015.07.02

End Date: 2015.07.02

Last Calib.: 2015.07.02

Start Time: 13:16:09

End Time: 17:39:33

Time On Btm: 2015.07.02 @ 15:08:04

Time Off Btm: 2015.07.02 @ 16:11:04

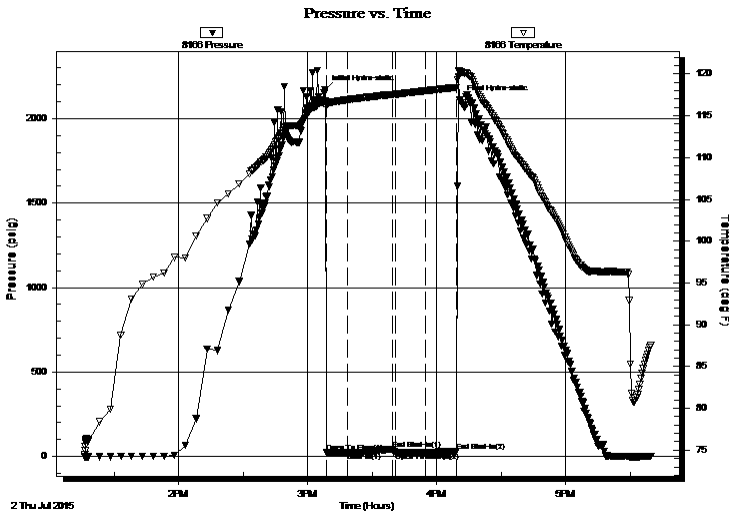
**TEST COMMENT:** IF: 1/4 blow died in 9 min.

IS: No return.

FF: No blow.

FS: No return.

## PRESSURE SUMMARY



Time (Min.)	Pressure (psig)	Temp (deg F)	Annotation
0	2170.30	116.77	Initial Hydro-static
1	22.06	116.14	Open To Flow (1)
11	22.77	116.93	Shut-In(1)
32	44.05	117.57	End Shut-In(1)
33	24.44	117.56	Open To Flow (2)
47	24.30	117.98	Shut-In(2)
61	30.51	118.38	End Shut-In(2)
63	2111.93	120.30	Final Hydro-static

## Recovery

Length (ft)	Description	Volume (bbl)
10.00	mud 100% m	0.05

## Gas Rates

Choke (inches)	Pressure (psig)	Gas Rate (Mcf/d)

\* Recovery from multiple tests



**TRILOBITE  
TESTING, INC.**

# DRILL STEM TEST REPORT

**FLUID SUMMARY**

Blue Goose Drilling Co, Inc

**32-17-27w Lane, Ks**

P.O. Box 1413  
Greatbend, Ks 67530

**Borell G #1**

Job Ticket: 61730

**DST#: 2**

ATTN: Ken Wallace

Test Start: 2015.07.02 @ 13:16:04

## Mud and Cushion Information

Mud Type: Gel Chem

Cushion Type:

Oil API:

0 deg API

Mud Weight: 9.00 lb/gal

Cushion Length:

ft

Water Salinity:

0 ppm

Viscosity: 60.00 sec/qt

Cushion Volume:

bbf

Water Loss: 7.20 in<sup>3</sup>

Gas Cushion Type:

Resistivity: 0.00 ohm.m

Gas Cushion Pressure:

psig

Salinity: 2500.00 ppm

Filter Cake: 1.00 inches

## Recovery Information

Recovery Table

Length ft	Description	Volume bbf
10.00	mud 100%m	0.049

Total Length: 10.00 ft      Total Volume: 0.049 bbf

Num Fluid Samples: 0

Num Gas Bombs: 0

Serial #:

Laboratory Name:

Laboratory Location:

Recovery Comments:

### Pressure vs. Time

