



**TRILOBITE TESTING, INC.**

# DRILL STEM TEST REPORT

Blue Goose Drilling Co, Inc

32-17-27w Lane, Ks

P.O. Box 1413  
Greatbend, Ks 67530

**Borell G #1**

Job Ticket: 61733

**DST#: 5**

ATTN: Ken Wallace

Test Start: 2015.07.04 @ 10:25:18

## GENERAL INFORMATION:

Formation: **Cherokee sand**

Deviated: No Whipstock: ft (KB)

Time Tool Opened: 12:04:18

Time Test Ended: 16:30:18

Test Type: Conventional Bottom Hole (Reset)

Tester: Brandon Turley

Unit No: 79

**Interval: 4529.00 ft (KB) To 4547.00 ft (KB) (TVD)**

Reference Elevations: 2682.00 ft (KB)

Total Depth: 4547.00 ft (KB) (TVD)

2675.00 ft (CF)

Hole Diameter: 7.88 inches Hole Condition: Good

KB to GR/CF: 7.00 ft

**Serial #: 8166 Outside**

Press @ Run Depth: 514.12 psig @ 4530.00 ft (KB)

Capacity: 8000.00 psig

Start Date: 2015.07.04

End Date:

2015.07.04

Last Calib.:

2015.07.04

Start Time: 10:25:23

End Time:

16:30:17

Time On Btm:

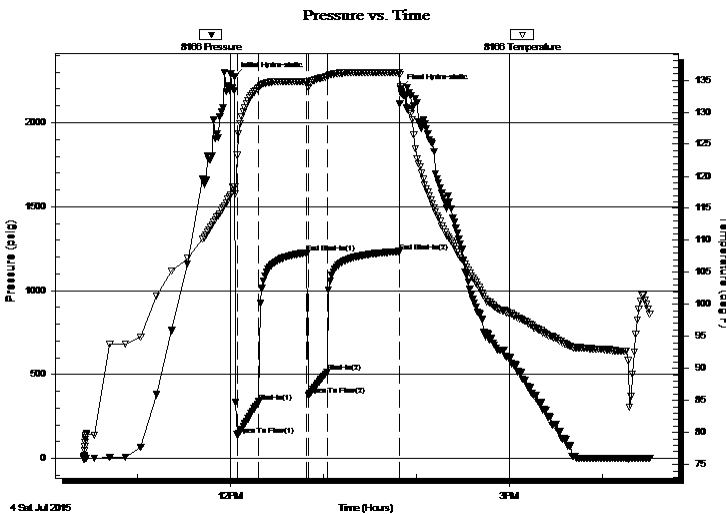
2015.07.04 @ 12:02:48

Time Off Btm:

2015.07.04 @ 13:49:48

**TEST COMMENT:** IF: BOB in 1 min.  
IS: BOB in 15 min.  
FF: BOB in 1 min.  
FS: BOB in 25 min.

## PRESSURE SUMMARY



Time (Min.)	Pressure (psig)	Temp (deg F)	Annotation
0	2275.37	118.38	Initial Hydro-static
2	141.54	123.29	Open To Flow (1)
16	337.36	133.82	Shut-In(1)
47	1226.32	134.81	End Shut-In(1)
48	376.08	133.81	Open To Flow (2)
60	514.12	135.53	Shut-In(2)
106	1232.99	136.19	End Shut-In(2)
107	2202.89	133.91	Final Hydro-static

## Recovery

Length (ft)	Description	Volume (bbl)
124.00	gocm 40%g 10%o 50%m	0.61
620.00	go 50%g 50%o	8.70
732.00	go 40%g 60%o	10.27
0.00	880 GIP	0.00

\* Recovery from multiple tests

## Gas Rates

Choke (inches)	Pressure (psig)	Gas Rate (Mcf/d)



**TRILOBITE  
TESTING, INC.**

# DRILL STEM TEST REPORT

**FLUID SUMMARY**

Blue Goose Drilling Co, Inc

**32-17-27w Lane, Ks**

P.O. Box 1413  
Greatbend, Ks 67530

**Borell G #1**

Job Ticket: 61733

**DST#: 5**

ATTN: Ken Wallace

Test Start: 2015.07.04 @ 10:25:18

## Mud and Cushion Information

Mud Type: Gel Chem

Cushion Type:

Oil API:

36 deg API

Mud Weight: 9.00 lb/gal

Cushion Length:

ft

Water Salinity:

0 ppm

Viscosity: 56.00 sec/qt

Cushion Volume:

bbbl

Water Loss: 7.60 in<sup>3</sup>

Gas Cushion Type:

Resistivity: 0.00 ohm.m

Gas Cushion Pressure:

psig

Salinity: 3000.00 ppm

Filter Cake: 1.00 inches

## Recovery Information

Recovery Table

Length ft	Description	Volume bbbl
124.00	gocm 40%g 10%o 50%m	0.610
620.00	go 50%g 50%o	8.697
732.00	go 40%g 60%o	10.268
0.00	880 GIP	0.000

Total Length: 1476.00 ft      Total Volume: 19.575 bbl

Num Fluid Samples: 0

Num Gas Bombs: 0

Serial #:

Laboratory Name:

Laboratory Location:

Recovery Comments: 40@100=36

