



DRILL STEM TEST REPORT

Prepared For: **Eagle Creek Exploration**

8100 E. 22nd ST.
North Building 1500 Suite A
Wichita KS 67226

ATTN: Gary Gensch

Vulgamore #1-31

31-18s33w Scott,KS

Start Date: 2015.08.14 @ 23:49:15

End Date: 2015.08.15 @ 07:19:30

Job Ticket #: 64454 DST #: 1

Trilobite Testing, Inc
1515 Commerce Parkway Hays, KS 67601
ph: 785-625-4778 fax: 785-625-5620

Printed: 2015.08.20 @ 14:21:17



**TRILOBITE
TESTING, INC.**

DRILL STEM TEST REPORT

TOOL DIAGRAM

Eagle Creek Exploration

31-18s33w Scott,KS

8100 E. 22nd ST.
North Building 1500 Suite A
Wichita KS 67226
ATTN: Gary Gensch

Vulgamore #1-31

Job Ticket: 64454

DST#: 1

Test Start: 2015.08.14 @ 23:49:15

Tool Information

Drill Pipe:	Length: 4171.00 ft	Diameter: 3.80 inches	Volume: 58.51 bbl	Tool Weight: 1500.00 lb
Heavy Wt. Pipe:	Length: 0.00 ft	Diameter: 0.00 inches	Volume: 0.00 bbl	Weight set on Packer: 20000.00 lb
Drill Collar:	Length: 0.00 ft	Diameter: 0.00 inches	Volume: 0.00 bbl	Weight to Pull Loose: 70000.00 lb
			<u>Total Volume: 58.51 bbl</u>	Tool Chased 0.00 ft
Drill Pipe Above KB:	33.00 ft			String Weight: Initial 47000.00 lb
Depth to Top Packer:	4166.00 ft			Final 48000.00 lb
Depth to Bottom Packer:	ft			
Interval between Packers:	77.00 ft			
Tool Length:	105.00 ft			
Number of Packers:	2	Diameter: 6.75 inches		

Tool Comments:

Tool Description

Tool Description	Length (ft)	Serial No.	Position	Depth (ft)	Accum. Lengths
Change Over Sub	1.00			4139.00	
Shut In Tool	5.00			4144.00	
Hydraulic tool	5.00			4149.00	
Jars	5.00			4154.00	
Safety Joint	3.00			4157.00	
Packer	5.00			4162.00	28.00 Bottom Of Top Packer
Packer	4.00			4166.00	
Stubb	1.00			4167.00	
Perforations	3.00			4170.00	
Recorder	0.00	8846	Inside	4170.00	
Recorder	0.00	8737	Outside	4170.00	
Change Over Sub	1.00			4171.00	
Drill Pipe	61.00			4232.00	
Change Over Sub	1.00			4233.00	
Perforations	5.00			4238.00	
Bullnose	5.00			4243.00	77.00 Bottom Packers & Anchor
Total Tool Length:	105.00				



**TRILOBITE
TESTING, INC**

DRILL STEM TEST REPORT

FLUID SUMMARY

Eagle Creek Exploration

31-18s33w Scott,KS

8100 E. 22nd ST.
North Building 1500 Suite A
Wichita KS 67226
ATTN: Gary Gensch

Vulgamore #1-31

Job Ticket: 64454

DST#: 1

Test Start: 2015.08.14 @ 23:49:15

Mud and Cushion Information

Mud Type: Gel Chem

Mud Weight: 9.00 lb/gal

Viscosity: 54.00 sec/qt

Water Loss: 8.71 in³

Resistivity: 0.00 ohm.m

Salinity: 3000.00 ppm

Filter Cake: 1.00 inches

Cushion Type:

Cushion Length: ft

Cushion Volume: bbl

Gas Cushion Type:

Gas Cushion Pressure: psig

Oil API:

0 deg API

Water Salinity: 0 ppm

Recovery Information

Recovery Table

Length ft	Description	Volume bbl
90.00	mud w ith oil spots 100% m	1.262

Total Length: 90.00 ft Total Volume: 1.262 bbl

Num Fluid Samples: 0

Num Gas Bombs: 0

Serial #:

Laboratory Name:

Laboratory Location:

Recovery Comments:

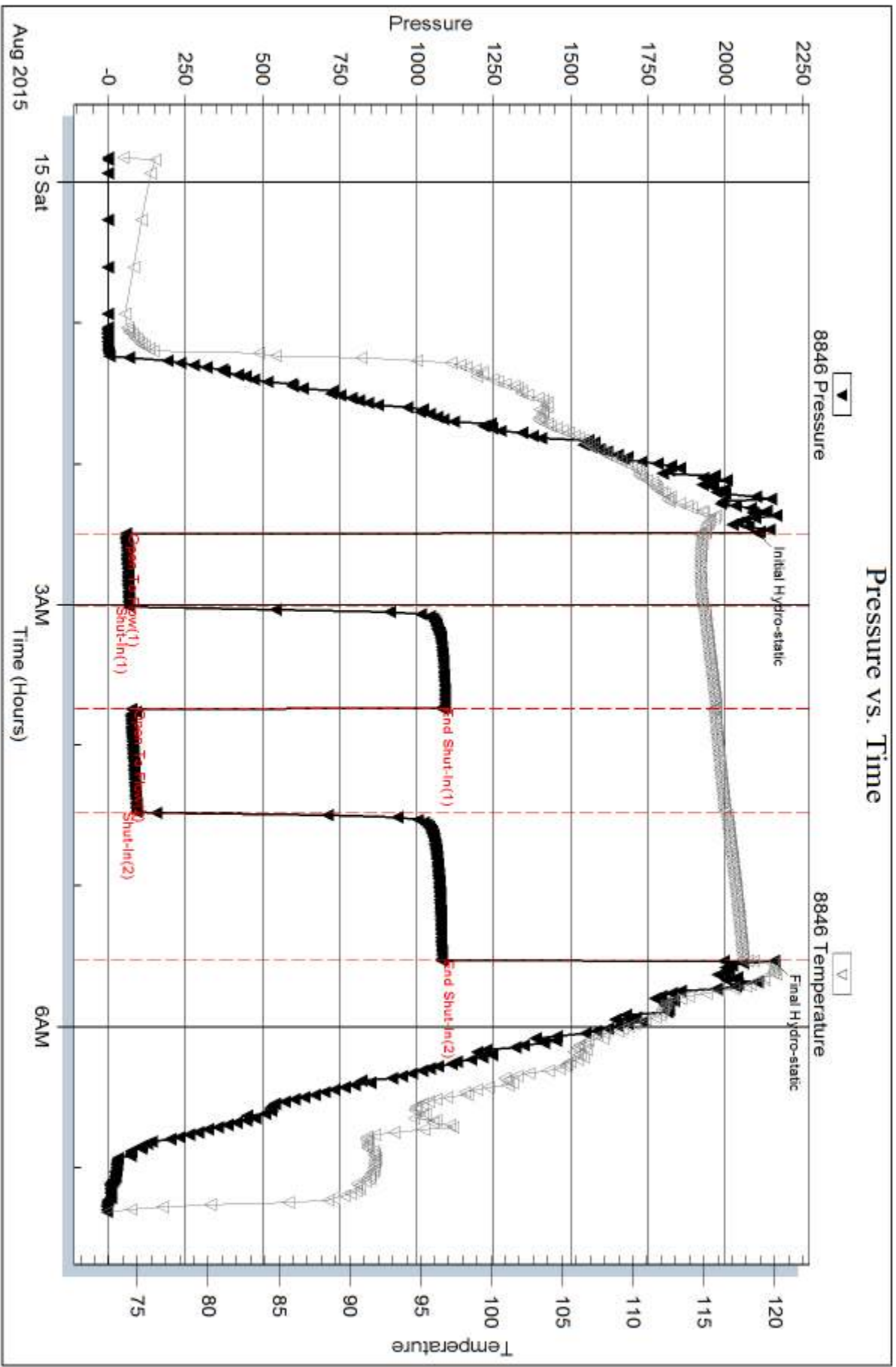
Serial #: 8846

Inside

Eagle Creek Exploration

Vulgamore #1-31

DST Test Number: 1

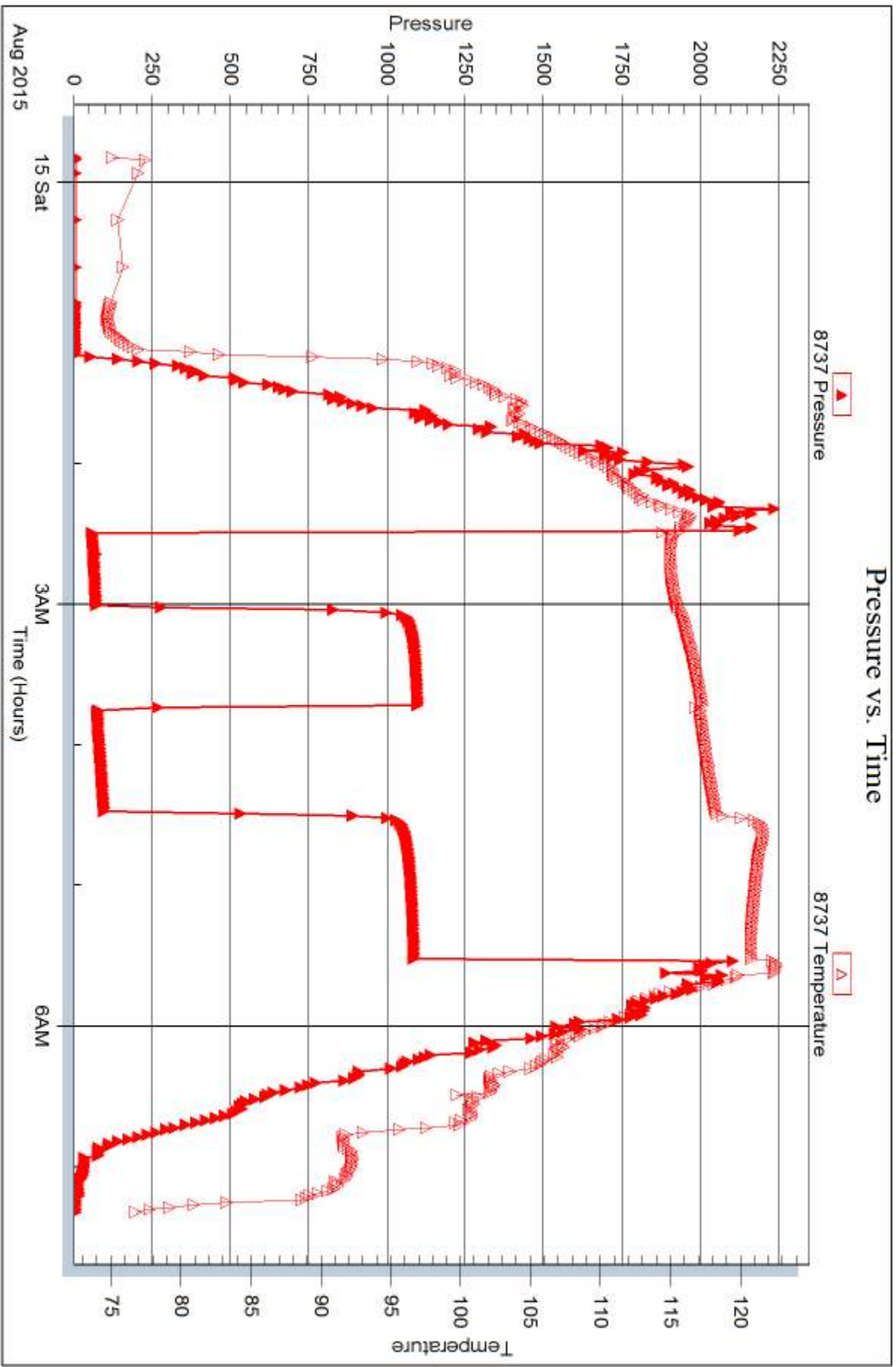


Serial #: 8737

Outside Eagle Creek Exploration

Vulgamore #1-31

DST Test Number: 1



Trilobite Testing, Inc

Ref. No: 64454

Printed: 2015.08.20 @ 14:21:18



DRILL STEM TEST REPORT

Prepared For: **Eagle Creek Exploration**

8100 E. 22nd ST.
North Building 1500 Suite A
Wichita KS 67226

ATTN: Gary Gensch

Vulgamore #1-31

31-18s33w Scott,KS

Start Date: 2015.08.15 @ 16:42:15

End Date: 2015.08.16 @ 00:34:45

Job Ticket #: 64455 DST #: 2

Trilobite Testing, Inc
1515 Commerce Parkway Hays, KS 67601
ph: 785-625-4778 fax: 785-625-5620

Printed: 2015.08.20 @ 14:20:54



TRILOBITE TESTING, INC.

DRILL STEM TEST REPORT

Eagle Creek Exploration
 8100 E. 22nd ST.
 North Building 1500 Suite A
 Wichita KS 67226
 ATTN: Gary Gensch

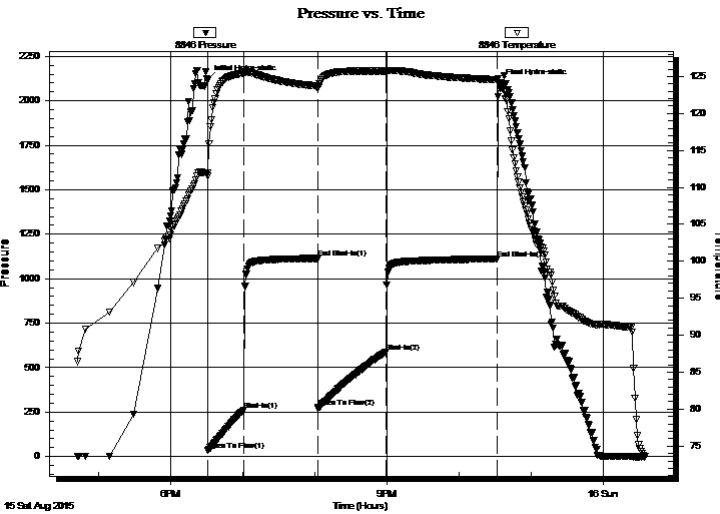
31-18s33w Scott,KS
Vulgamore #1-31
 Job Ticket: 64455 **DST#: 2**
 Test Start: 2015.08.15 @ 16:42:15

GENERAL INFORMATION:

Formation: **LKC K**
 Deviated: No Whipstock: ft (KB)
 Time Tool Opened: 18:30:45
 Time Test Ended: 00:34:45
 Interval: **4302.00 ft (KB) To 4321.00 ft (KB) (TVD)**
 Total Depth: 4321.00 ft (KB) (TVD)
 Hole Diameter: 7.88 inches Hole Condition: Fair
 Test Type: Conventional Bottom Hole (Reset)
 Tester: Mike Roberts
 Unit No: 65
 Reference Elevations: 3055.00 ft (KB)
 3045.00 ft (CF)
 KB to GR/CF: 10.00 ft

Serial #: 8846 Inside
 Press@RunDepth: 589.20 psig @ 4316.00 ft (KB) Capacity: 8000.00 psig
 Start Date: 2015.08.15 End Date: 2015.08.16 Last Calib.: 2015.08.16
 Start Time: 16:42:15 End Time: 00:34:45 Time On Btm: 2015.08.15 @ 18:30:15
 Time Off Btm: 2015.08.15 @ 22:33:45

TEST COMMENT: IF:BOB in 7 min.
 IS:No return blow
 FF:BOB in 8 min.
 FS:No return blow



PRESSURE SUMMARY

Time (Min.)	Pressure (psig)	Temp (deg F)	Annotation
0	2117.28	111.92	Initial Hydro-static
1	35.46	111.51	Open To Flow (1)
31	261.98	125.44	Shut-In(1)
92	1114.61	123.70	End Shut-In(1)
93	275.20	123.37	Open To Flow (2)
149	589.20	125.72	Shut-In(2)
242	1111.83	124.55	End Shut-In(2)
244	2096.70	124.20	Final Hydro-static

Recovery

Length (ft)	Description	Volume (bbl)
77.00	ocw m 1%o 39%w 60%m	1.08
248.00	mcw 50%m 50%w	3.48
1039.00	w ater 100%w	14.57

* Recovery from multiple tests

Gas Rates

	Choke (inches)	Pressure (psig)	Gas Rate (MMcf/d)



**TRILOBITE
TESTING, INC.**

DRILL STEM TEST REPORT

TOOL DIAGRAM

Eagle Creek Exploration

31-18s33w Scott,KS

8100 E. 22nd ST.
North Building 1500 Suite A
Wichita KS 67226
ATTN: Gary Gensch

Vulgamore #1-31

Job Ticket: 64455

DST#: 2

Test Start: 2015.08.15 @ 16:42:15

Tool Information

Drill Pipe:	Length: 4296.00 ft	Diameter: 3.80 inches	Volume: 60.26 bbl	Tool Weight: 1500.00 lb
Heavy Wt. Pipe:	Length: 0.00 ft	Diameter: 0.00 inches	Volume: 0.00 bbl	Weight set on Packer: 20000.00 lb
Drill Collar:	Length: 0.00 ft	Diameter: 0.00 inches	Volume: 0.00 bbl	Weight to Pull Loose: 80000.00 lb
			<u>Total Volume: 60.26 bbl</u>	Tool Chased 0.00 ft
Drill Pipe Above KB:	15.00 ft			String Weight: Initial 58000.00 lb
Depth to Top Packer:	4302.00 ft			Final 62000.00 lb
Depth to Bottom Packer:	ft			
Interval between Packers:	19.00 ft			
Tool Length:	40.00 ft			
Number of Packers:	2	Diameter: 6.75 inches		

Tool Comments:

Tool Description

Tool Description	Length (ft)	Serial No.	Position	Depth (ft)	Accum. Lengths
Change Over Sub	1.00			4282.00	
Shut In Tool	5.00			4287.00	
Hydraulic tool	5.00			4292.00	
Packer	5.00			4297.00	21.00 Bottom Of Top Packer
Packer	5.00			4302.00	
Stubb	1.00			4303.00	
Perforations	13.00			4316.00	
Recorder	0.00	8846	Inside	4316.00	
Recorder	0.00	8737	Outside	4316.00	
Bullnose	5.00			4321.00	19.00 Bottom Packers & Anchor
Total Tool Length:	40.00				



**TRILOBITE
TESTING, INC**

DRILL STEM TEST REPORT

FLUID SUMMARY

Eagle Creek Exploration

31-18s33w Scott,KS

8100 E. 22nd ST.
North Building 1500 Suite A
Wichita KS 67226
ATTN: Gary Gensch

Vulgamore #1-31

Job Ticket: 64455

DST#: 2

Test Start: 2015.08.15 @ 16:42:15

Mud and Cushion Information

Mud Type: Gel Chem

Mud Weight: 9.00 lb/gal

Viscosity: 55.00 sec/qt

Water Loss: 7.92 in³

Resistivity: 0.00 ohm.m

Salinity: 3500.00 ppm

Filter Cake: 1.00 inches

Cushion Type:

Cushion Length: ft

Cushion Volume: bbl

Gas Cushion Type:

Gas Cushion Pressure: psig

Oil API:

0 deg API

Water Salinity: 24000 ppm

Recovery Information

Recovery Table

Length ft	Description	Volume bbl
77.00	ocw m 1%o 39%w 60%m	1.080
248.00	mcw 50%m 50%w	3.479
1039.00	water 100%w	14.574

Total Length: 1364.00 ft Total Volume: 19.133 bbl

Num Fluid Samples: 0

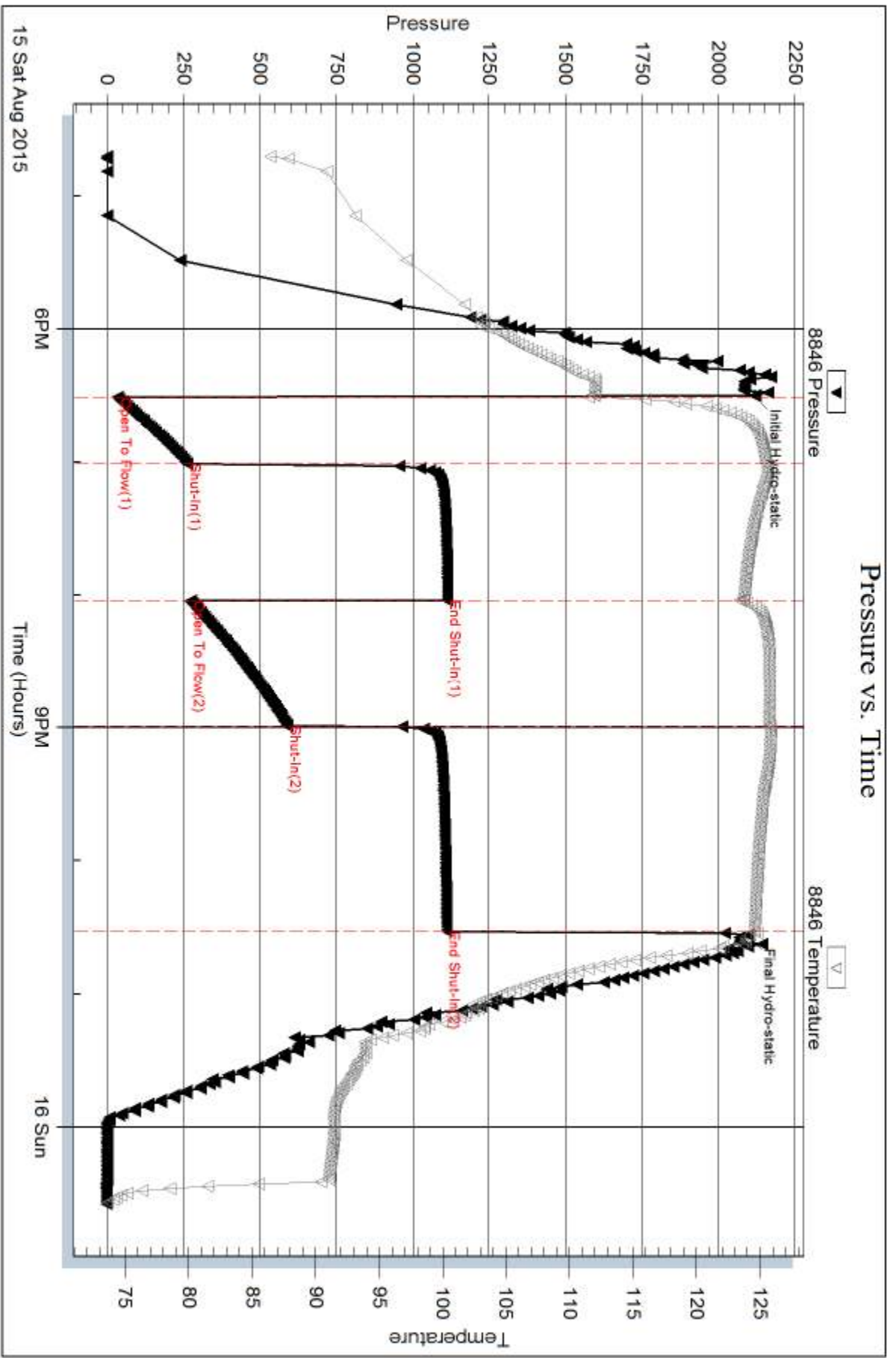
Num Gas Bombs: 0

Serial #:

Laboratory Name:

Laboratory Location:

Recovery Comments: RW= .29@ 74.7*= 24,000 ppm

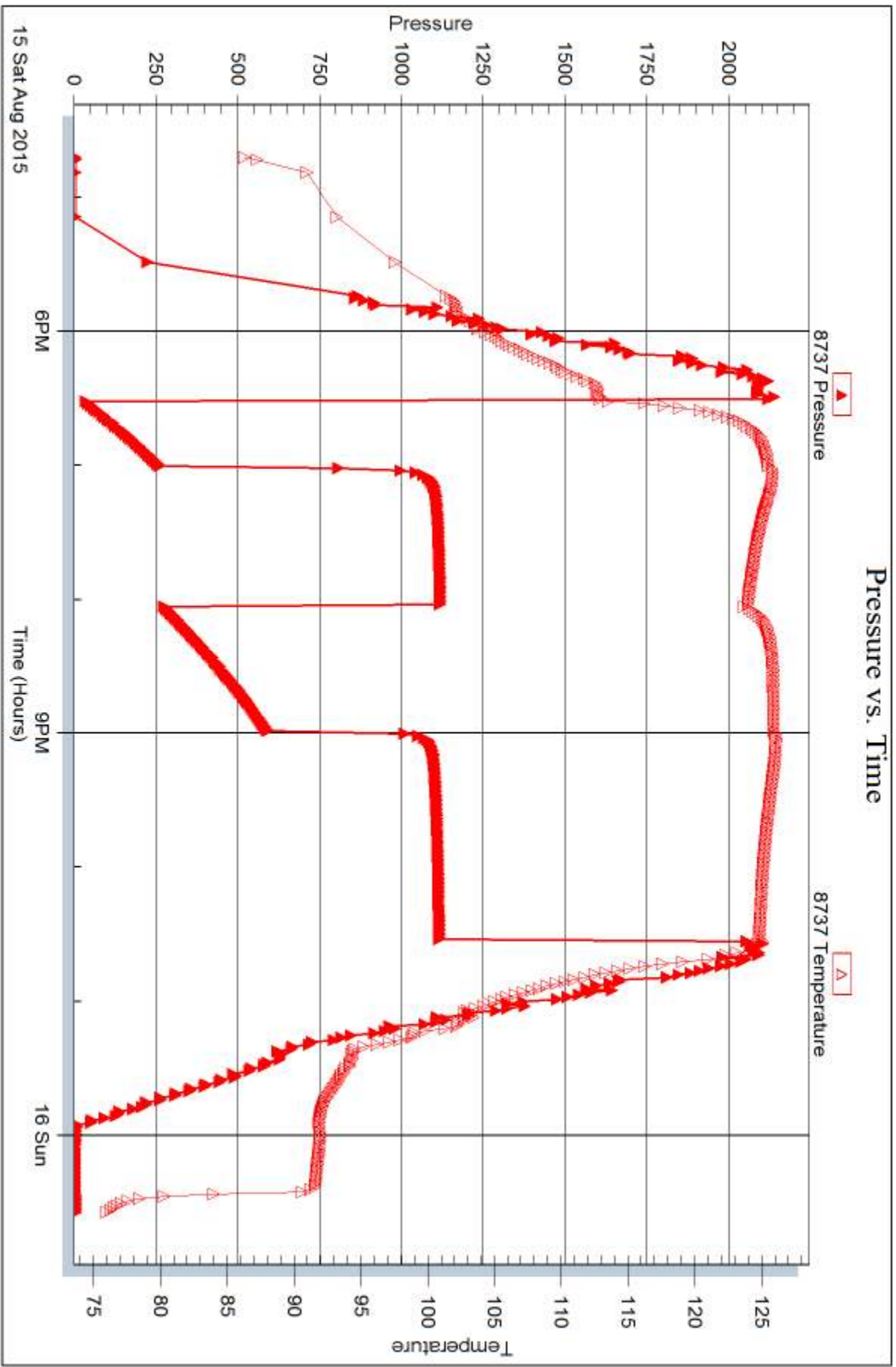


Serial #: 8737

Outside Eagle Creek Exploration

Vulgamore #1-31

DST Test Number: 2



Trilobite Testing, Inc

Ref. No: 64455

Printed: 2015.08.20 @ 14:20:55



DRILL STEM TEST REPORT

Prepared For: **Eagle Creek Exploration**

8100 E. 22nd ST.
North Building 1500 Suite A
Wichita KS 67226

ATTN: Gary Gensch

Vulgamore #1-31

31-18s33w Scott,KS

Start Date: 2015.08.16 @ 22:54:15

End Date: 2015.08.17 @ 06:14:00

Job Ticket #: 64456 DST #: 3

Trilobite Testing, Inc
1515 Commerce Parkway Hays, KS 67601
ph: 785-625-4778 fax: 785-625-5620

Printed: 2015.08.20 @ 14:20:32



TRILOBITE TESTING, INC.

DRILL STEM TEST REPORT

Eagle Creek Exploration
 8100 E. 22nd ST.
 North Building 1500 Suite A
 Wichita KS 67226
 ATTN: Gary Gensch

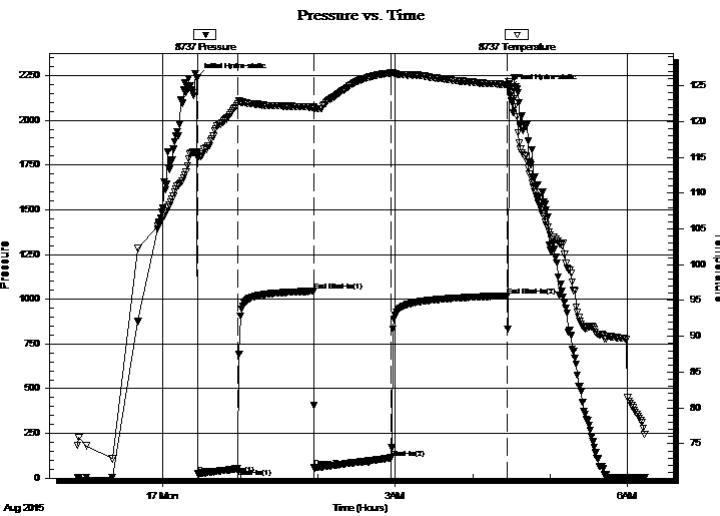
31-18s33w Scott,KS
Vulgamore #1-31
 Job Ticket: 64456 **DST#: 3**
 Test Start: 2015.08.16 @ 22:54:15

GENERAL INFORMATION:

Formation: **Marmaton C**
 Deviated: No Whipstock: ft (KB)
 Time Tool Opened: 00:27:00
 Time Test Ended: 06:14:00
 Interval: **4468.00 ft (KB) To 4502.00 ft (KB) (TVD)**
 Total Depth: 4502.00 ft (KB) (TVD)
 Hole Diameter: 7.88 inches Hole Condition: Fair
 Test Type: Conventional Bottom Hole (Reset)
 Tester: Mike Roberts
 Unit No: 65
 Reference Elevations: 3055.00 ft (KB)
 3045.00 ft (CF)
 KB to GR/CF: 10.00 ft

Serial #: 8737 Outside
 Press@RunDepth: 111.40 psig @ 4497.00 ft (KB) Capacity: 8000.00 psig
 Start Date: 2015.08.16 End Date: 2015.08.17 Last Calib.: 2015.08.17
 Start Time: 22:54:00 End Time: 06:13:45 Time On Btm: 2015.08.17 @ 00:26:30
 Time Off Btm: 2015.08.17 @ 04:27:45

TEST COMMENT: IF:Built to 5" blow
 IS:No return blow
 FF:Built to 8" blow
 FS:No return blow



PRESSURE SUMMARY

Time (Min.)	Pressure (psig)	Temp (deg F)	Annotation
0	2235.99	115.72	Initial Hydro-static
1	23.64	114.97	Open To Flow (1)
32	53.38	122.52	Shut-In(1)
91	1045.26	122.01	End Shut-In(1)
91	62.01	121.71	Open To Flow (2)
151	111.40	126.78	Shut-In(2)
241	1019.91	125.15	End Shut-In(2)
242	2179.50	125.52	Final Hydro-static

Recovery

Length (ft)	Description	Volume (bbl)
62.00	w cm 10%w 90%m	0.87
124.00	mcw 20%m 80%w	1.74

* Recovery from multiple tests

Gas Rates

	Choke (inches)	Pressure (psig)	Gas Rate (MMcf/d)



TRILOBITE TESTING, INC.

DRILL STEM TEST REPORT

Eagle Creek Exploration
8100 E. 22nd ST.
North Building 1500 Suite A
Wichita KS 67226
ATTN: Gary Gensch

31-18s33w Scott,KS
Vulgamore #1-31
Job Ticket: 64456 **DST#: 3**
Test Start: 2015.08.16 @ 22:54:15

GENERAL INFORMATION:

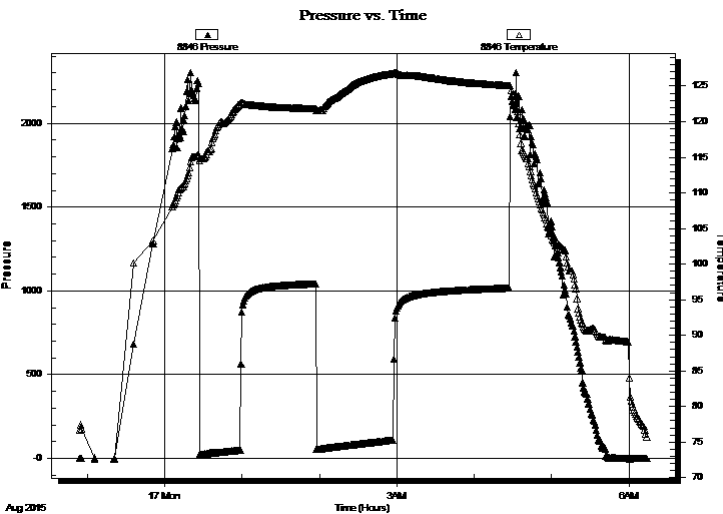
Formation: **Marmaton C**
Deviated: No Whipstock: ft (KB) Test Type: Conventional Bottom Hole (Reset)
Time Tool Opened: 00:27:00 Tester: Mike Roberts
Time Test Ended: 06:14:00 Unit No: 65

Interval: 4468.00 ft (KB) To 4502.00 ft (KB) (TVD) Reference Elevations: 3055.00 ft (KB)
Total Depth: 4502.00 ft (KB) (TVD) 3045.00 ft (CF)
Hole Diameter: 7.88 inches Hole Condition: Fair KB to GR/CF: 10.00 ft

Serial #: 8846 Inside

Press@RunDepth: psig @	4497.00 ft (KB)	Capacity:	8000.00 psig
Start Date: 2015.08.16	End Date: 2015.08.17	Last Calib.:	2015.08.17
Start Time: 22:54:15	End Time: 06:14:00	Time On Btm:	
		Time Off Btm:	

TEST COMMENT: IF:Built to 5" blow
IS:No return blow
FF:Built to 8" blow
FS:No return blow



PRESSURE SUMMARY

Time (Min.)	Pressure (psig)	Temp (deg F)	Annotation

Recovery

Length (ft)	Description	Volume (bbl)
62.00	w cm 10%w 90%m	0.87
124.00	maw 20%m 80%w	1.74

Gas Rates

	Choke (inches)	Pressure (psig)	Gas Rate (MMcf/d)

* Recovery from multiple tests



**TRILOBITE
TESTING, INC.**

DRILL STEM TEST REPORT

TOOL DIAGRAM

Eagle Creek Exploration

31-18s33w Scott,KS

8100 E. 22nd ST.
North Building 1500 Suite A
Wichita KS 67226
ATTN: Gary Gensch

Vulgamore #1-31

Job Ticket: 64456

DST#: 3

Test Start: 2015.08.16 @ 22:54:15

Tool Information

Drill Pipe:	Length: 4455.00 ft	Diameter: 3.80 inches	Volume: 62.49 bbl	Tool Weight: 1500.00 lb
Heavy Wt. Pipe:	Length: 0.00 ft	Diameter: 0.00 inches	Volume: 0.00 bbl	Weight set on Packer: 20000.00 lb
Drill Collar:	Length: 0.00 ft	Diameter: 0.00 inches	Volume: 0.00 bbl	Weight to Pull Loose: 80000.00 lb
			<u>Total Volume: 62.49 bbl</u>	Tool Chased 0.00 ft
Drill Pipe Above KB:	15.00 ft			String Weight: Initial 47000.00 lb
Depth to Top Packer:	4468.00 ft			Final 48000.00 lb
Depth to Bottom Packer:	ft			
Interval between Packers:	34.00 ft			
Tool Length:	62.00 ft			
Number of Packers:	2	Diameter: 6.75 inches		

Tool Comments:

Tool Description

Tool Description	Length (ft)	Serial No.	Position	Depth (ft)	Accum. Lengths
Change Over Sub	1.00			4441.00	
Shut In Tool	5.00			4446.00	
Hydraulic tool	5.00			4451.00	
Jars	5.00			4456.00	
Safety Joint	3.00			4459.00	
Packer	5.00			4464.00	28.00 Bottom Of Top Packer
Packer	4.00			4468.00	
Stubb	1.00			4469.00	
Perforations	28.00			4497.00	
Recorder	0.00	8846	Inside	4497.00	
Recorder	0.00	8737	Outside	4497.00	
Bullnose	5.00			4502.00	34.00 Bottom Packers & Anchor

Total Tool Length: 62.00



**TRILOBITE
TESTING, INC**

DRILL STEM TEST REPORT

FLUID SUMMARY

Eagle Creek Exploration

31-18s33w Scott,KS

8100 E. 22nd ST.
North Building 1500 Suite A
Wichita KS 67226
ATTN: Gary Gensch

Vulgamore #1-31

Job Ticket: 64456

DST#: 3

Test Start: 2015.08.16 @ 22:54:15

Mud and Cushion Information

Mud Type: Gel Chem

Cushion Type:

Oil API:

0 deg API

Mud Weight: 9.00 lb/gal

Cushion Length:

ft

Water Salinity:

31000 ppm

Viscosity: 57.00 sec/qt

Cushion Volume:

bbbl

Water Loss: 7.95 in³

Gas Cushion Type:

Resistivity: 0.00 ohm.m

Gas Cushion Pressure:

psig

Salinity: 3300.00 ppm

Filter Cake: 1.00 inches

Recovery Information

Recovery Table

Length ft	Description	Volume bbbl
62.00	w cm 10%w 90%m	0.870
124.00	mcw 20%m 80%w	1.739

Total Length: 186.00 ft Total Volume: 2.609 bbl

Num Fluid Samples: 0

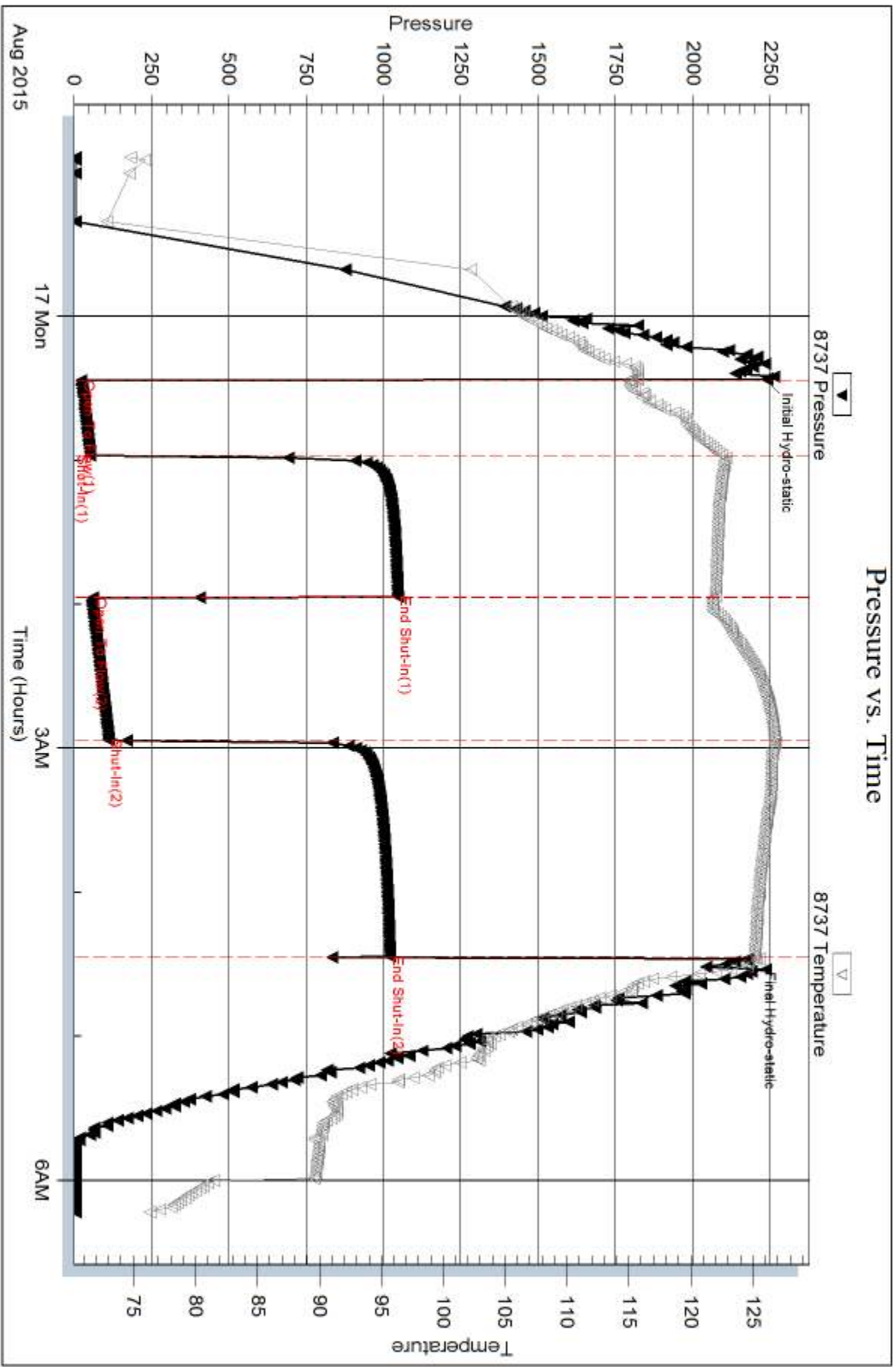
Num Gas Bombs: 0

Serial #:

Laboratory Name:

Laboratory Location:

Recovery Comments: RW= .30@ 64.4= 31,000 ppm



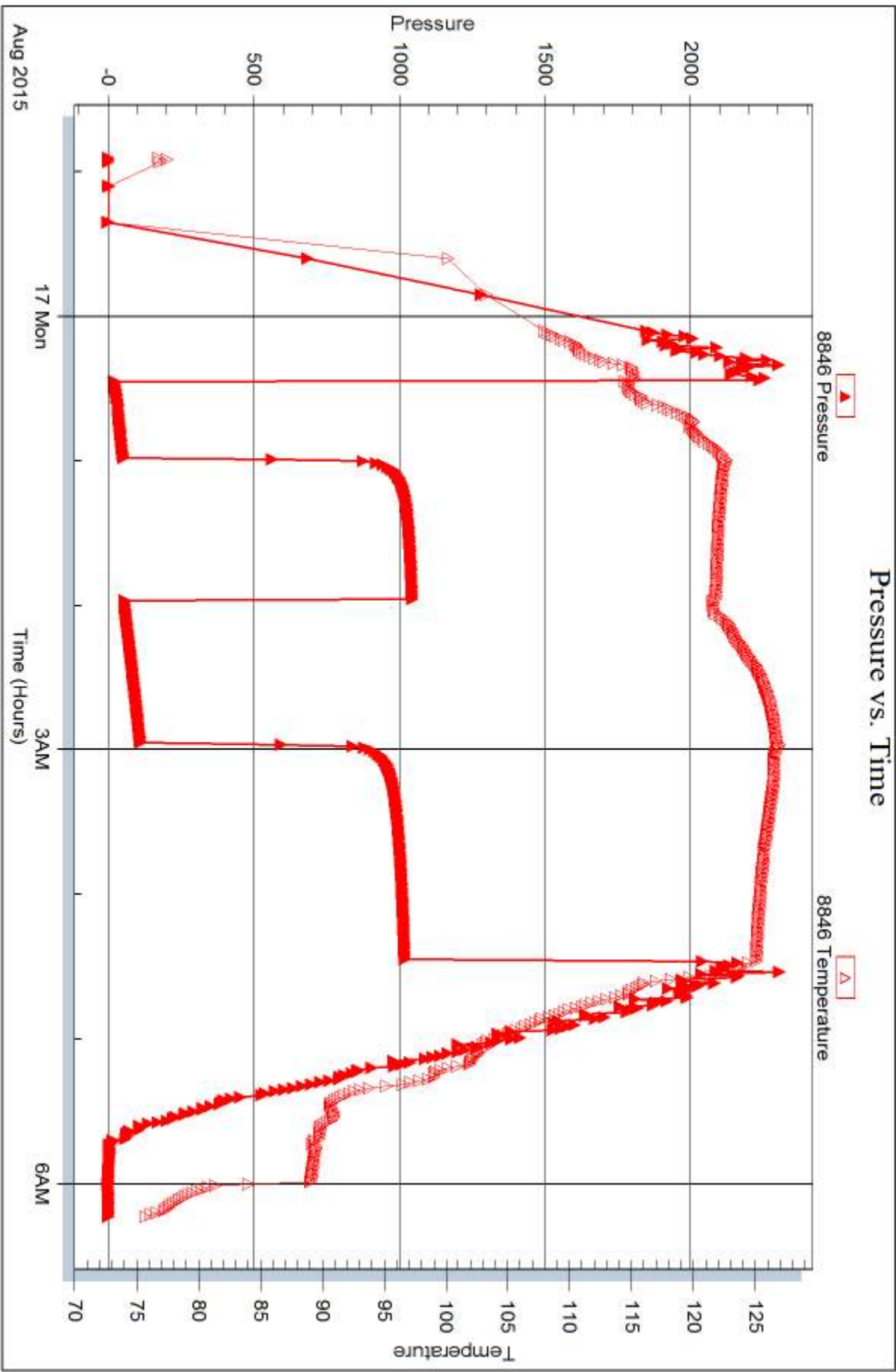
Serial #: 8846

Inside

Eagle Creek Exploration

Vulgamore #1-31

DST Test Number: 3





DRILL STEM TEST REPORT

Prepared For: **Eagle Creek Exploration**

8100 E. 22nd ST.
North Building 1500 Suite A
Wichita KS 67226

ATTN: Gary Gensch

Vulgamore #1-31

31-18s33w Scott,KS

Start Date: 2015.08.17 @ 18:17:15

End Date: 2015.08.17 @ 23:55:45

Job Ticket #: 64457 DST #: 4

Trilobite Testing, Inc
1515 Commerce Parkway Hays, KS 67601
ph: 785-625-4778 fax: 785-625-5620

Printed: 2015.08.20 @ 14:20:06



**TRILOBITE
TESTING, INC.**

DRILL STEM TEST REPORT

Eagle Creek Exploration
8100 E. 22nd ST.
North Building 1500 Suite A
Wichita KS 67226
ATTN: Gary Gensch

31-18s33w Scott,KS

Vulgamore #1-31

Job Ticket: 64457

DST#: 4

Test Start: 2015.08.17 @ 18:17:15

GENERAL INFORMATION:

Formation: **Pawnee**

Deviated: No Whipstock: ft (KB)

Time Tool Opened: 20:05:45

Time Test Ended: 23:55:45

Test Type: Conventional Bottom Hole (Reset)

Tester: Mike Roberts

Unit No: 65

Interval: 4526.00 ft (KB) To 4556.00 ft (KB) (TVD)

Total Depth: 4556.00 ft (KB) (TVD)

Hole Diameter: 7.88 inches Hole Condition: Fair

Reference Elevations: 3055.00 ft (KB)

3045.00 ft (CF)

KB to GR/CF: 10.00 ft

Serial #: 8846

Inside

Press@RunDepth: 21.23 psig @ 4551.00 ft (KB)

Start Date: 2015.08.17

End Date:

2015.08.17

Start Time: 18:17:15

End Time:

23:55:45

Capacity: 8000.00 psig

Last Calib.: 2015.08.18

Time On Btm: 2015.08.17 @ 20:05:30

Time Off Btm: 2015.08.17 @ 22:05:45

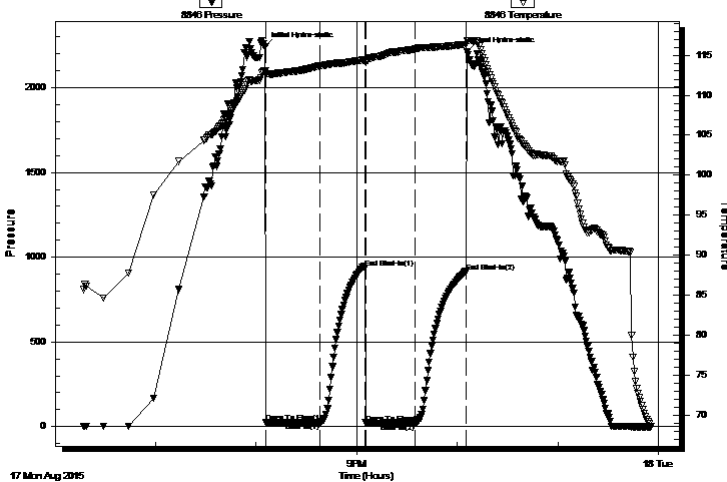
TEST COMMENT: IF: Built to weak surface blow

IS: No return blow

FF: No blow

FS: No return blow

Pressure vs. Time



PRESSURE SUMMARY

Time (Min.)	Pressure (psig)	Temp (deg F)	Annotation
0	2241.98	113.01	Initial Hydro-static
1	22.85	112.58	Open To Flow (1)
33	22.97	113.65	Shut-In(1)
60	936.16	114.38	End Shut-In(1)
60	21.79	114.15	Open To Flow (2)
90	21.23	115.75	Shut-In(2)
120	915.47	116.34	End Shut-In(2)
121	2211.46	116.84	Final Hydro-static

Recovery

Length (ft)	Description	Volume (bbl)
10.00	mud 100% m	0.14

Gas Rates

Choke (inches)	Pressure (psig)	Gas Rate (MMcf/d)

* Recovery from multiple tests



TRILOBITE TESTING, INC.

DRILL STEM TEST REPORT

Eagle Creek Exploration
 8100 E. 22nd ST.
 North Building 1500 Suite A
 Wichita KS 67226
 ATTN: Gary Gensch

31-18s33w Scott,KS

Vulgamore #1-31

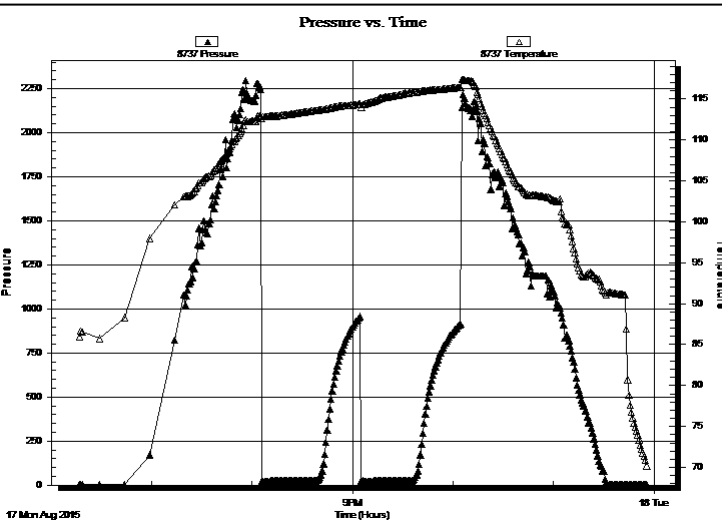
Job Ticket: 64457 **DST#: 4**
 Test Start: 2015.08.17 @ 18:17:15

GENERAL INFORMATION:

Formation: **Pawnee**
 Deviated: No Whipstock: ft (KB)
 Test Type: Conventional Bottom Hole (Reset)
 Time Tool Opened: 20:05:45 Tester: Mike Roberts
 Time Test Ended: 23:55:45 Unit No: 65
 Interval: **4526.00 ft (KB) To 4556.00 ft (KB) (TVD)**
 Total Depth: 4556.00 ft (KB) (TVD)
 Reference Elevations: 3055.00 ft (KB)
 Hole Diameter: 7.88 inches
 Hole Condition: Fair KB to GR/CF: 10.00 ft

Serial #: 8737 Outside
 Press@RunDepth: psig @ 4551.00 ft (KB) Capacity: 8000.00 psig
 Start Date: 2015.08.17 End Date: 2015.08.17 Last Calib.: 2015.08.18
 Start Time: 18:17:15 End Time: 23:56:00 Time On Btm:
 Time Off Btm:

TEST COMMENT: IF:Built to weak surface blow
 IS:No return blow
 FF:No blow
 FS:No return blow



PRESSURE SUMMARY			
Time (Min.)	Pressure (psig)	Temp (deg F)	Annotation

Recovery		
Length (ft)	Description	Volume (bbl)
10.00	mud 100%m	0.14

* Recovery from multiple tests

Gas Rates			
	Choke (inches)	Pressure (psig)	Gas Rate (MMcf/d)



**TRILOBITE
TESTING, INC.**

DRILL STEM TEST REPORT

TOOL DIAGRAM

Eagle Creek Exploration

31-18s33w Scott,KS

8100 E. 22nd ST.
North Building 1500 Suite A
Wichita KS 67226
ATTN: Gary Gensch

Vulgamore #1-31

Job Ticket: 64457

DST#: 4

Test Start: 2015.08.17 @ 18:17:15

Tool Information

Drill Pipe:	Length: 4533.00 ft	Diameter: 3.80 inches	Volume: 63.59 bbl	Tool Weight: 1500.00 lb
Heavy Wt. Pipe:	Length: 0.00 ft	Diameter: 0.00 inches	Volume: 0.00 bbl	Weight set on Packer: 25000.00 lb
Drill Collar:	Length: 0.00 ft	Diameter: 0.00 inches	Volume: 0.00 bbl	Weight to Pull Loose: 70000.00 lb
			<u>Total Volume: 63.59 bbl</u>	Tool Chased 0.00 ft
Drill Pipe Above KB:	28.00 ft			String Weight: Initial 50000.00 lb
Depth to Top Packer:	4526.00 ft			Final 50000.00 lb
Depth to Bottom Packer:	ft			
Interval between Packers:	30.00 ft			
Tool Length:	51.00 ft			
Number of Packers:	2	Diameter: 6.75 inches		

Tool Comments:

Tool Description

Tool Description	Length (ft)	Serial No.	Position	Depth (ft)	Accum. Lengths
Change Over Sub	1.00			4506.00	
Shut In Tool	5.00			4511.00	
Hydraulic tool	5.00			4516.00	
Packer	5.00			4521.00	21.00 Bottom Of Top Packer
Packer	5.00			4526.00	
Stubb	1.00			4527.00	
Perforations	24.00			4551.00	
Recorder	0.00	8846	Inside	4551.00	
Recorder	0.00	8737	Outside	4551.00	
Bullnose	5.00			4556.00	30.00 Bottom Packers & Anchor
Total Tool Length:	51.00				



**TRILOBITE
TESTING, INC**

DRILL STEM TEST REPORT

FLUID SUMMARY

Eagle Creek Exploration

31-18s33w Scott,KS

8100 E. 22nd ST.
North Building 1500 Suite A
Wichita KS 67226
ATTN: Gary Gensch

Vulgamore #1-31

Job Ticket: 64457

DST#: 4

Test Start: 2015.08.17 @ 18:17:15

Mud and Cushion Information

Mud Type: Gel Chem

Cushion Type:

Oil API:

0 deg API

Mud Weight: 9.00 lb/gal

Cushion Length:

ft

Water Salinity:

0 ppm

Viscosity: 58.00 sec/qt

Cushion Volume:

bbbl

Water Loss: 10.35 in³

Gas Cushion Type:

Resistivity: 0.00 ohm.m

Gas Cushion Pressure:

psig

Salinity: 5000.00 ppm

Filter Cake: 1.00 inches

Recovery Information

Recovery Table

Length ft	Description	Volume bbl
10.00	mud 100%m	0.140

Total Length: 10.00 ft Total Volume: 0.140 bbl

Num Fluid Samples: 0

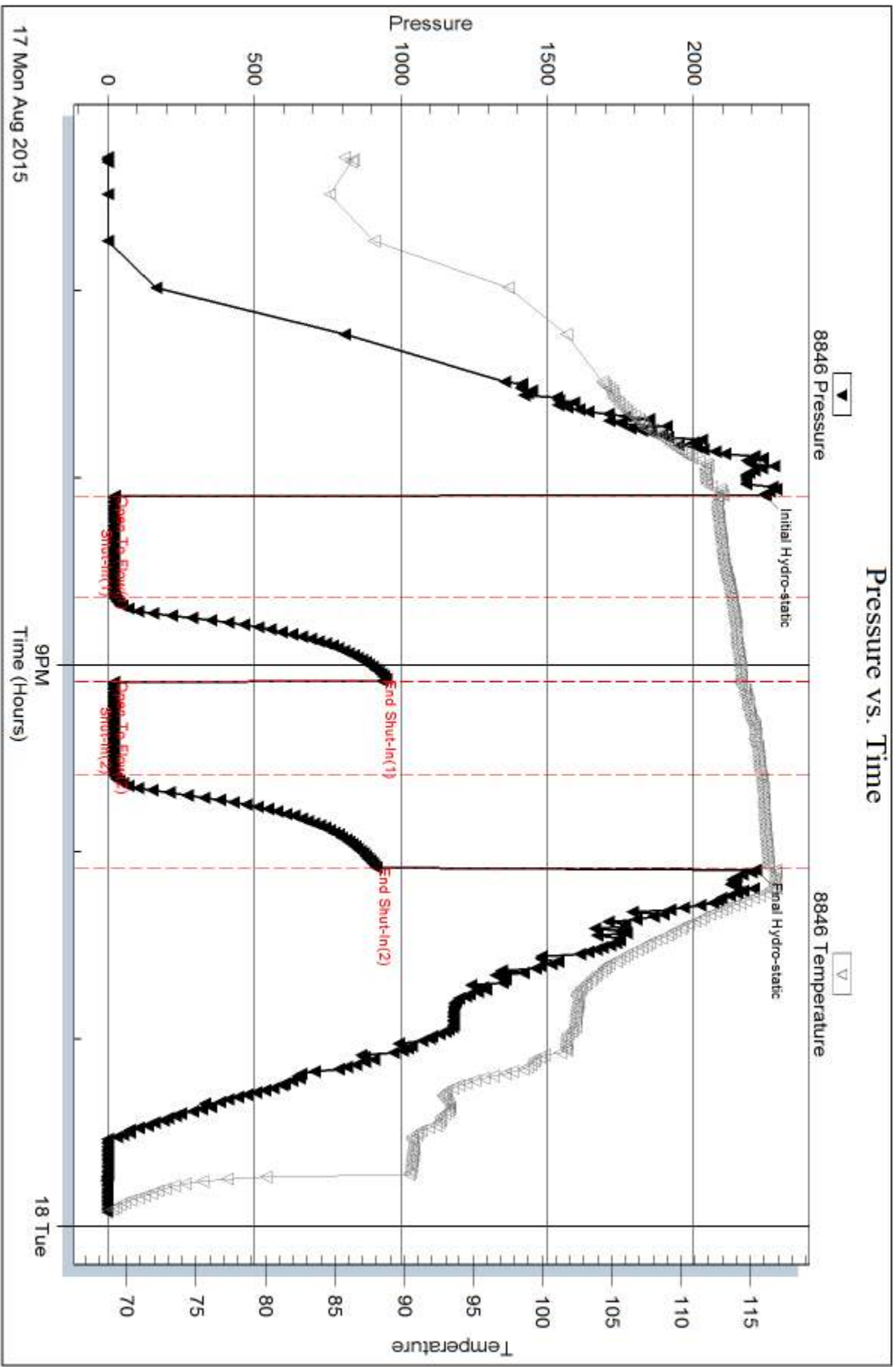
Num Gas Bombs: 0

Serial #:

Laboratory Name:

Laboratory Location:

Recovery Comments:

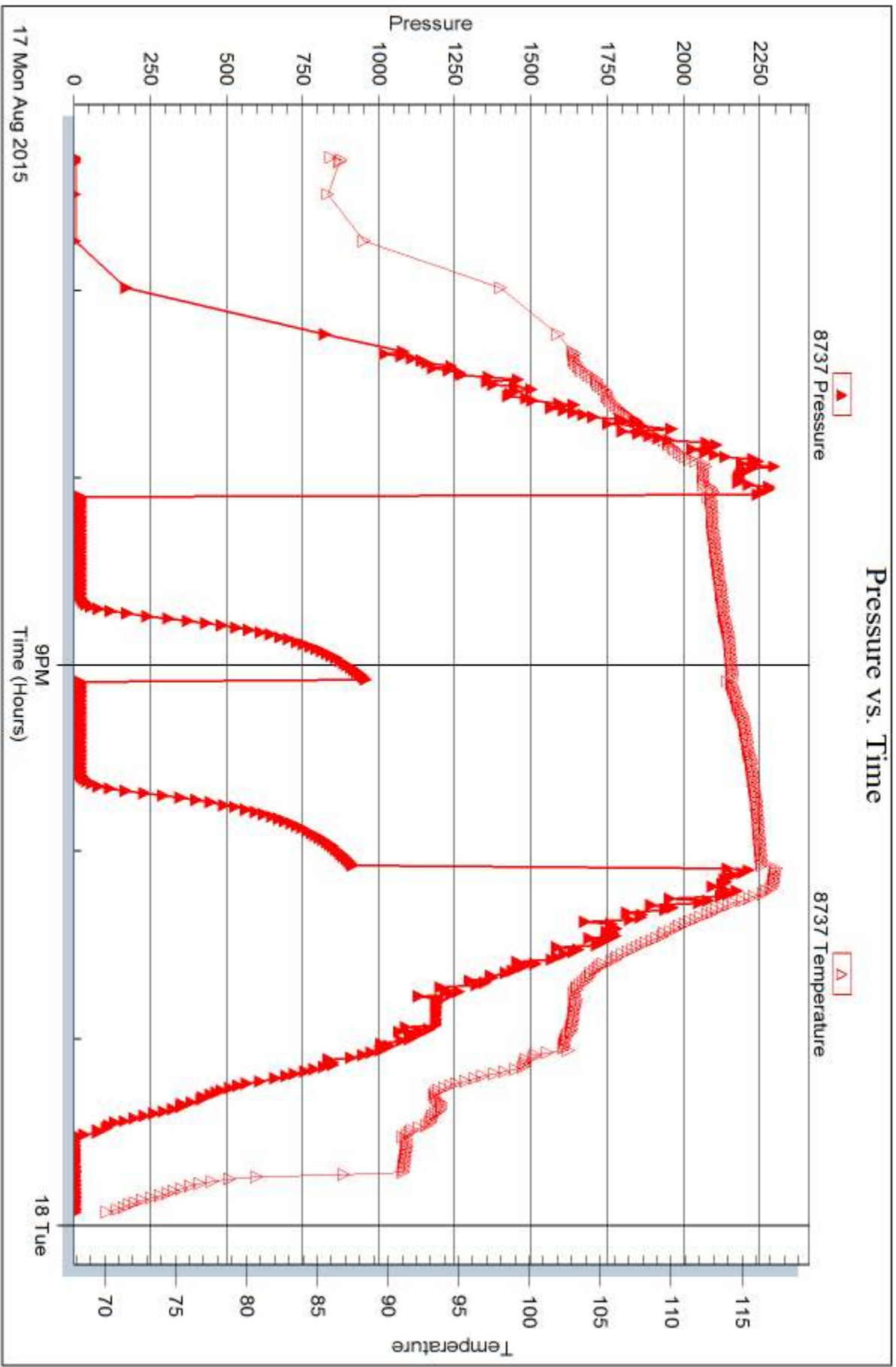


Serial #: 8737

Outside Eagle Creek Exploration

Vulgamore #1-31

DST Test Number: 4



Trilobite Testing, Inc

Ref. No: 64457

Printed: 2015.08.20 @ 14:20:06



DRILL STEM TEST REPORT

Prepared For: **Eagle Creek Exploration**

8100 E. 22nd ST.
North Building 1500 Suite A
Wichita KS 67226

ATTN: Gary Gensch

Vulgamore #1-31

31-18s33w Scott,KS

Start Date: 2015.08.18 @ 21:43:15

End Date: 2015.08.19 @ 03:22:00

Job Ticket #: 64458 DST #: 5

Trilobite Testing, Inc
1515 Commerce Parkway Hays, KS 67601
ph: 785-625-4778 fax: 785-625-5620

Printed: 2015.08.20 @ 14:16:02

Eagle Creek Exploration

31-18s33w Scott,KS

Vulgamore #1-31

DST # 5

Marrow Sand

2015.08.18



TRILOBITE TESTING, INC.

DRILL STEM TEST REPORT

Eagle Creek Exploration
 8100 E. 22nd ST.
 North Building 1500 Suite A
 Wichita KS 67226
 ATTN: Gary Gensch

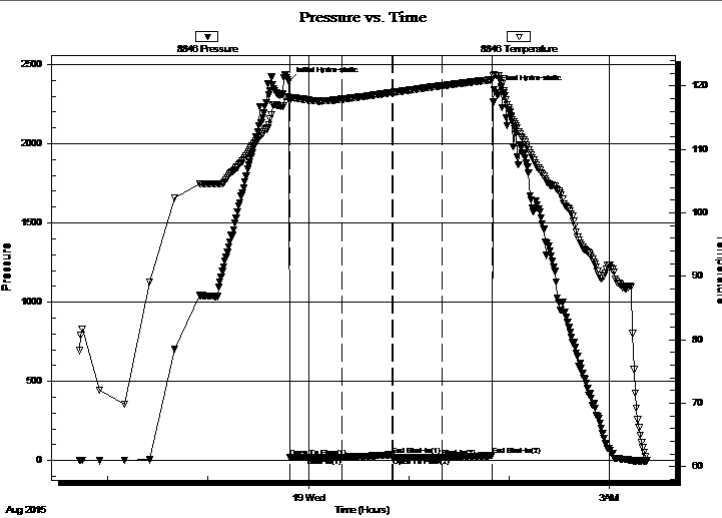
31-18s33w Scott,KS
Vulgamore #1-31
 Job Ticket: 64458 **DST#: 5**
 Test Start: 2015.08.18 @ 21:43:15

GENERAL INFORMATION:

Formation: **Marrow Sand**
 Deviated: No Whipstock: ft (KB)
 Time Tool Opened: 23:48:45
 Time Test Ended: 03:22:00
 Interval: **4728.00 ft (KB) To 4756.00 ft (KB) (TVD)**
 Total Depth: 4756.00 ft (KB) (TVD)
 Hole Diameter: 7.88 inches Hole Condition: Fair
 Test Type: Conventional Bottom Hole (Reset)
 Tester: Mike Roberts
 Unit No: 65
 Reference Elevations: 3055.00 ft (KB)
 3045.00 ft (CF)
 KB to GR/CF: 10.00 ft

Serial #: 8846 Inside
 Press@RunDepth: 21.74 psig @ 4751.00 ft (KB) Capacity: 8000.00 psig
 Start Date: 2015.08.18 End Date: 2015.08.19 Last Calib.: 2015.08.19
 Start Time: 21:43:15 End Time: 03:22:00 Time On Btm: 2015.08.18 @ 23:48:30
 Time Off Btm: 2015.08.19 @ 01:51:00

TEST COMMENT: IF: Built to weak surface blow
 IS: No return blow
 FF: No blow
 FS: No return blow



PRESSURE SUMMARY

Time (Min.)	Pressure (psig)	Temp (deg F)	Annotation
0	2390.51	118.17	Initial Hydro-static
1	21.89	117.53	Open To Flow (1)
32	21.47	117.92	Shut-In(1)
62	36.07	118.98	End Shut-In(1)
62	21.51	118.98	Open To Flow (2)
92	21.74	120.05	Shut-In(2)
122	32.03	121.02	End Shut-In(2)
123	2342.73	121.83	Final Hydro-static

Recovery

Length (ft)	Description	Volume (bbl)
1.00	mud 100%m	0.01

* Recovery from multiple tests

Gas Rates

Choke (inches)	Pressure (psig)	Gas Rate (MMcf/d)



DRILL STEM TEST REPORT

Eagle Creek Exploration
 8100 E. 22nd ST.
 North Building 1500 Suite A
 Wichita KS 67226
 ATTN: Gary Gensch

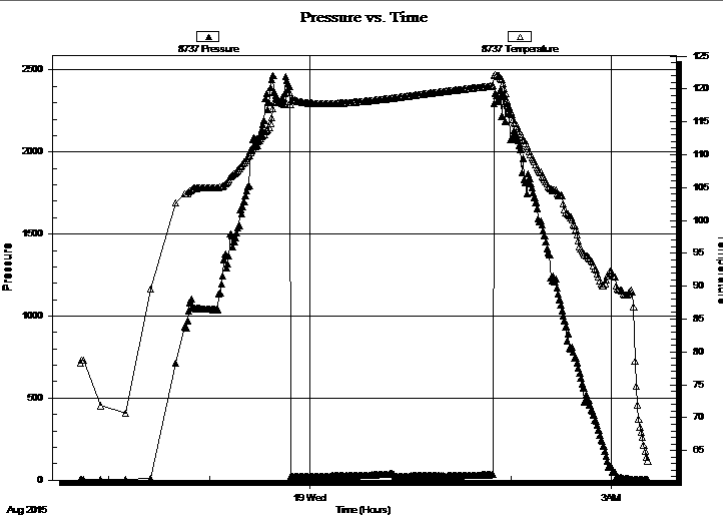
31-18s33w Scott,KS
Vulgamore #1-31
 Job Ticket: 64458 **DST#: 5**
 Test Start: 2015.08.18 @ 21:43:15

GENERAL INFORMATION:

Formation: Marrow Sand		Test Type: Conventional Bottom Hole (Reset)
Deviated: No Whipstock:	ft (KB)	Tester: Mike Roberts
Time Tool Opened: 23:48:45		Unit No: 65
Time Test Ended: 03:22:00		
Interval: 4728.00 ft (KB) To 4756.00 ft (KB) (TVD)		Reference Elevations: 3055.00 ft (KB)
Total Depth: 4756.00 ft (KB) (TVD)		3045.00 ft (CF)
Hole Diameter: 7.88 inches Hole Condition: Fair		KB to GR/CF: 10.00 ft

Serial #: 8737	Outside			Capacity: 8000.00 psig
Press@RunDepth: psig @ 4751.00 ft (KB)				Last Calib.: 2015.08.19
Start Date: 2015.08.18	End Date: 2015.08.19	Start Time: 21:43:15	End Time: 03:22:00	Time On Btm:
				Time Off Btm:

TEST COMMENT: IF:Built to weak surface blow
 IS:No return blow
 FF:No blow
 FS:No return blow



PRESSURE SUMMARY			
Time (Min.)	Pressure (psig)	Temp (deg F)	Annotation

Recovery		
Length (ft)	Description	Volume (bbl)
1.00	mud 100%m	0.01

* Recovery from multiple tests

Gas Rates			
	Choke (inches)	Pressure (psig)	Gas Rate (MMcf/d)



**TRILOBITE
TESTING, INC.**

DRILL STEM TEST REPORT

TOOL DIAGRAM

Eagle Creek Exploration

31-18s33w Scott,KS

8100 E. 22nd ST.
North Building 1500 Suite A
Wichita KS 67226
ATTN: Gary Gensch

Vulgamore #1-31

Job Ticket: 64458

DST#: 5

Test Start: 2015.08.18 @ 21:43:15

Tool Information

Drill Pipe:	Length: 4720.00 ft	Diameter: 3.80 inches	Volume: 66.21 bbl	Tool Weight: 1500.00 lb
Heavy Wt. Pipe:	Length: 0.00 ft	Diameter: 0.00 inches	Volume: 0.00 bbl	Weight set on Packer: 20000.00 lb
Drill Collar:	Length: 0.00 ft	Diameter: 0.00 inches	Volume: 0.00 bbl	Weight to Pull Loose: 65000.00 lb
			<u>Total Volume: 66.21 bbl</u>	Tool Chased 0.00 ft
Drill Pipe Above KB:	13.00 ft			String Weight: Initial 50000.00 lb
Depth to Top Packer:	4728.00 ft			Final 50000.00 lb
Depth to Bottom Packer:	ft			
Interval between Packers:	28.00 ft			
Tool Length:	49.00 ft			
Number of Packers:	2	Diameter: 6.75 inches		

Tool Comments:

Tool Description

Tool Description	Length (ft)	Serial No.	Position	Depth (ft)	Accum. Lengths
Change Over Sub	1.00			4708.00	
Shut In Tool	5.00			4713.00	
Hydraulic tool	5.00			4718.00	
Packer	5.00			4723.00	21.00 Bottom Of Top Packer
Packer	5.00			4728.00	
Stubb	1.00			4729.00	
Perforations	22.00			4751.00	
Recorder	0.00	8846	Inside	4751.00	
Recorder	0.00	8737	Outside	4751.00	
Bullnose	5.00			4756.00	28.00 Bottom Packers & Anchor
Total Tool Length:	49.00				



**TRILOBITE
TESTING, INC.**

DRILL STEM TEST REPORT

FLUID SUMMARY

Eagle Creek Exploration

31-18s33w Scott,KS

8100 E. 22nd ST.
North Building 1500 Suite A
Wichita KS 67226
ATTN: Gary Gensch

Vulgamore #1-31

Job Ticket: 64458

DST#: 5

Test Start: 2015.08.18 @ 21:43:15

Mud and Cushion Information

Mud Type: Gel Chem

Mud Weight: 9.00 lb/gal

Viscosity: 48.00 sec/qt

Water Loss: 10.36 in³

Resistivity: 0.00 ohm.m

Salinity: 6400.00 ppm

Filter Cake: 1.00 inches

Cushion Type:

Cushion Length: ft

Cushion Volume: bbl

Gas Cushion Type:

Gas Cushion Pressure: psig

Oil API:

0 deg API

Water Salinity: 0 ppm

Recovery Information

Recovery Table

Length ft	Description	Volume bbl
1.00	mud 100%m	0.014

Total Length: 1.00 ft Total Volume: 0.014 bbl

Num Fluid Samples: 0

Num Gas Bombs: 0

Serial #:

Laboratory Name:

Laboratory Location:

Recovery Comments:

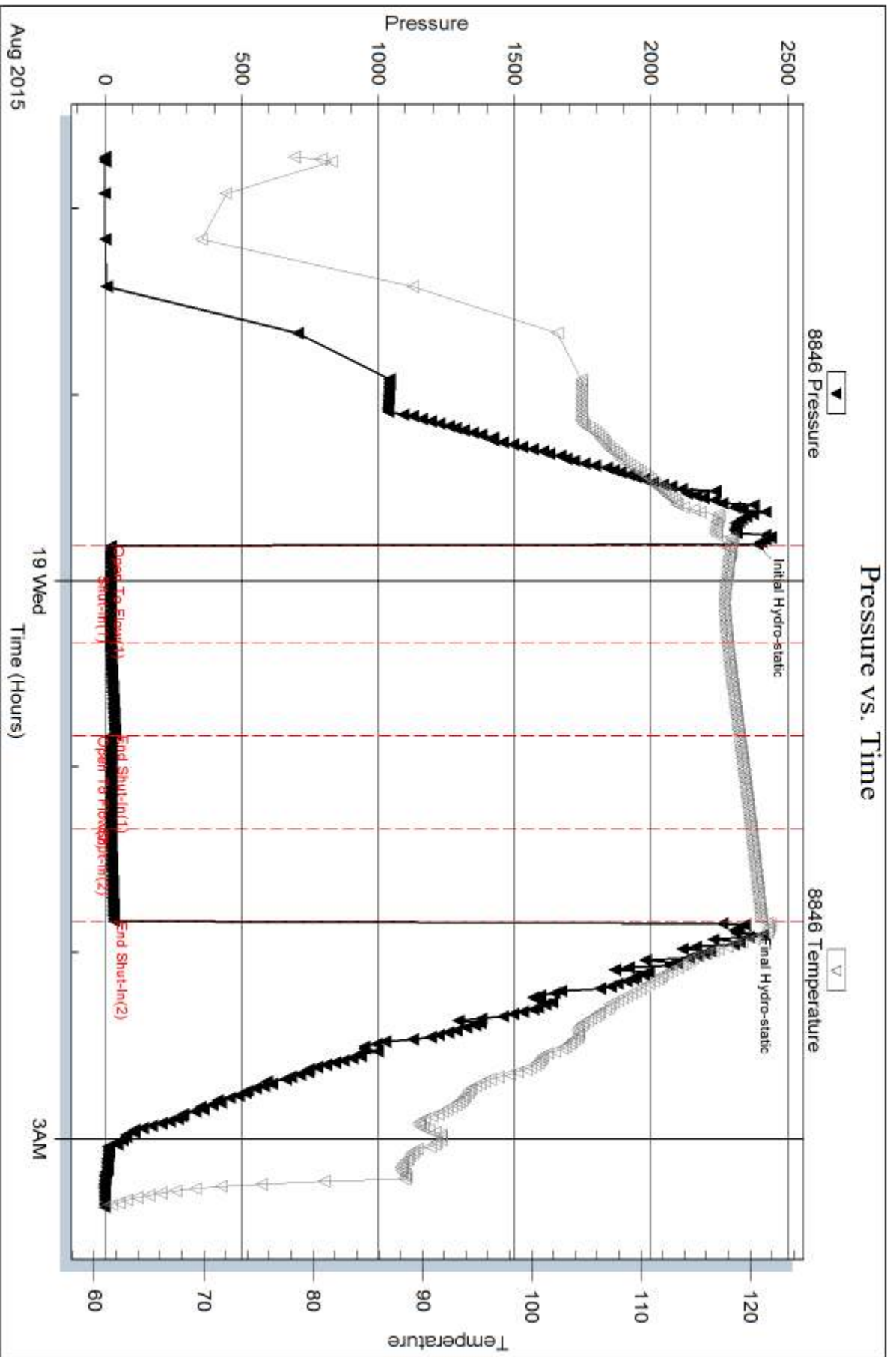
Serial #: 8846

Inside

Eagle Creek Exploration

Vulgamore #1-31

DST Test Number: 5

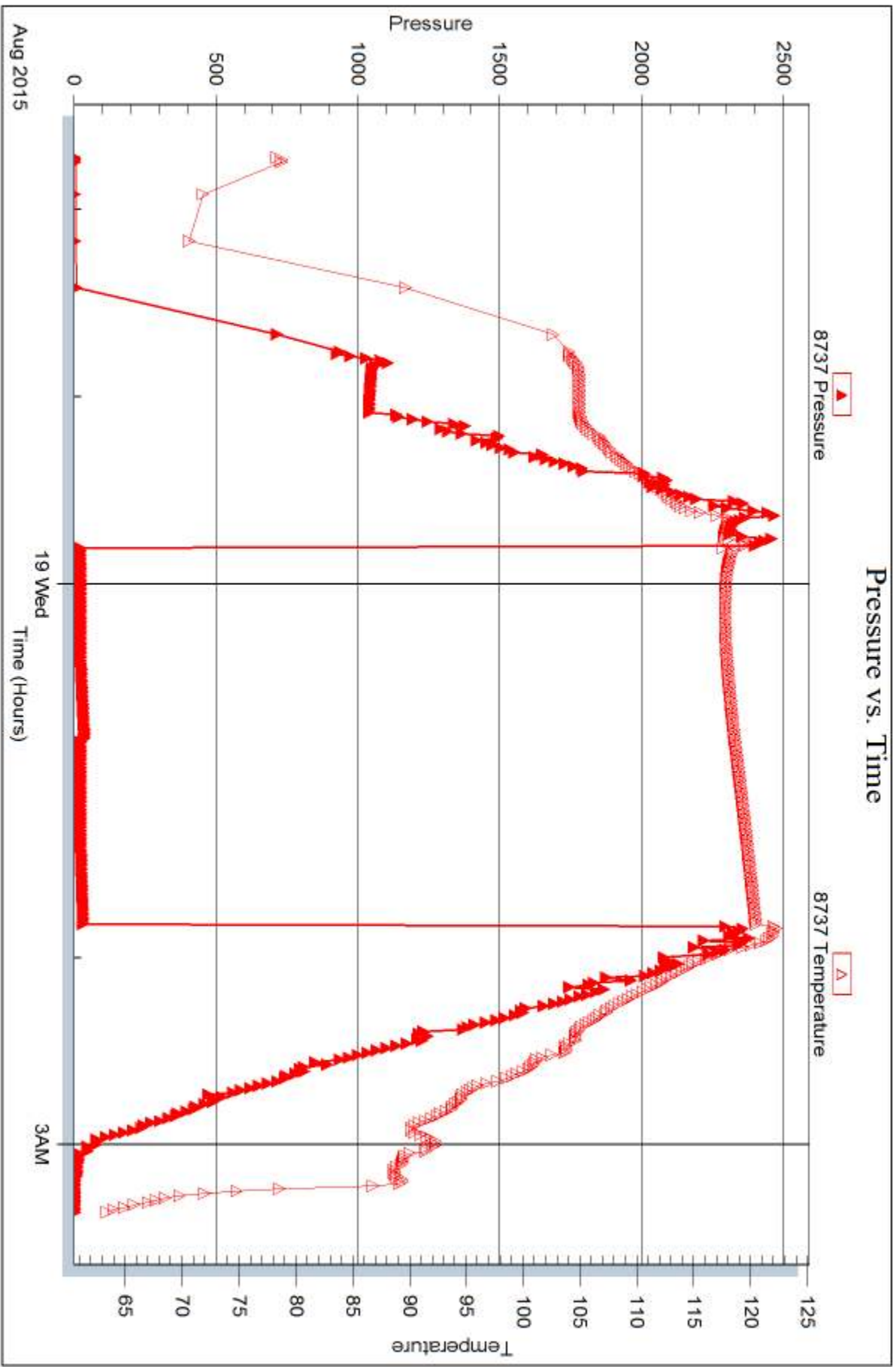


Serial #: 8737

Outside Eagle Creek Exploration

Vulgamore #1-31

DST Test Number: 5



Trilobite Testing, Inc

Ref. No: 64458

Printed: 2015.08.20 @ 14:16:04



DRILL STEM TEST REPORT

Prepared For: **Eagle Creek Exploration**

8100 E. 22nd ST.
North Building 1500 Suite A
Wichita KS 67226

ATTN: Gary Gensch

Vulgamore #1-31

31-18s33w Scott,KS

Start Date: 2015.08.19 @ 13:58:15

End Date: 2015.08.19 @ 22:12:45

Job Ticket #: 64459 DST #: 6

Trilobite Testing, Inc
1515 Commerce Parkway Hays, KS 67601
ph: 785-625-4778 fax: 785-625-5620

Printed: 2015.08.20 @ 14:15:28



**TRILOBITE
TESTING, INC.**

DRILL STEM TEST REPORT

Eagle Creek Exploration
8100 E. 22nd ST.
North Building 1500 Suite A
Wichita KS 67226
ATTN: Gary Gensch

31-18s33w Scott,KS
Vulgamore #1-31
Job Ticket: 64459 **DST#: 6**
Test Start: 2015.08.19 @ 13:58:15

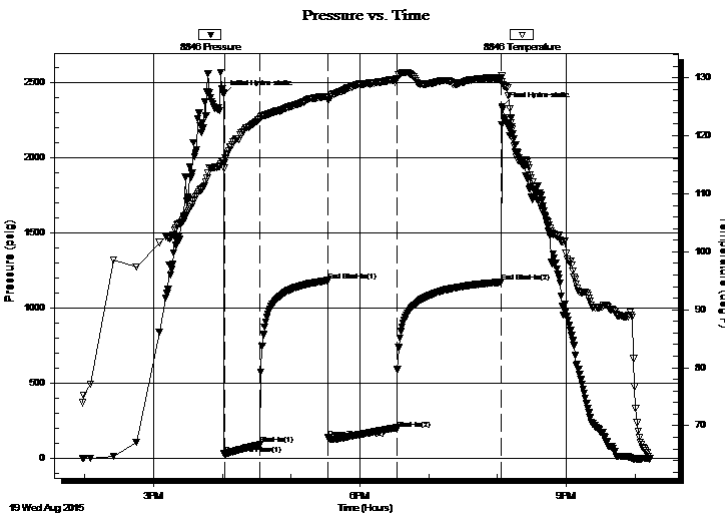
GENERAL INFORMATION:

Formation: **St. Louis B**
Deviated: No Whipstock: ft (KB)
Time Tool Opened: 16:02:00
Time Test Ended: 22:12:45
Interval: **4776.00 ft (KB) To 4815.00 ft (KB) (TVD)**
Total Depth: 4815.00 ft (KB) (TVD)
Hole Diameter: 7.88 inches Hole Condition: Fair
Test Type: Conventional Bottom Hole (Reset)
Tester: Mike Roberts
Unit No: 65
Reference Elevations: 3055.00 ft (KB)
3045.00 ft (CF)
KB to GR/CF: 10.00 ft

Serial #: 8846 **Inside**
Press@RunDepth: 197.21 psig @ 4810.00 ft (KB) Capacity: 8000.00 psig
Start Date: 2015.08.19 End Date: 2015.08.19 Last Calib.: 2015.08.19
Start Time: 13:58:15 End Time: 22:12:45 Time On Btm: 2015.08.19 @ 16:01:30
Time Off Btm: 2015.08.19 @ 20:04:15

TEST COMMENT: IF: Built to 10" blow
IS: No return blow
FF: BOB in 37 min.
FS: No return blow

PRESSURE SUMMARY



Time (Min.)	Pressure (psig)	Temp (deg F)	Annotation
0	2424.33	115.69	Initial Hydro-static
1	30.17	115.37	Open To Flow (1)
32	91.56	123.03	Shut-In(1)
91	1184.30	126.80	End Shut-In(1)
91	137.53	126.28	Open To Flow (2)
151	197.21	129.76	Shut-In(2)
242	1173.81	129.97	End Shut-In(2)
243	2339.93	129.37	Final Hydro-static

Recovery

Length (ft)	Description	Volume (bbl)
32.00	ocw m 5% o 25%w 75%m	0.45
248.00	ocw m 5%o 15%w 80%m	3.48
186.00	2%o 30%m 68%w	2.61

* Recovery from multiple tests

Gas Rates

	Choke (inches)	Pressure (psig)	Gas Rate (MMcf/d)



TRILOBITE TESTING, INC

DRILL STEM TEST REPORT

Eagle Creek Exploration
 8100 E. 22nd ST.
 North Building 1500 Suite A
 Wichita KS 67226
 ATTN: Gary Gensch

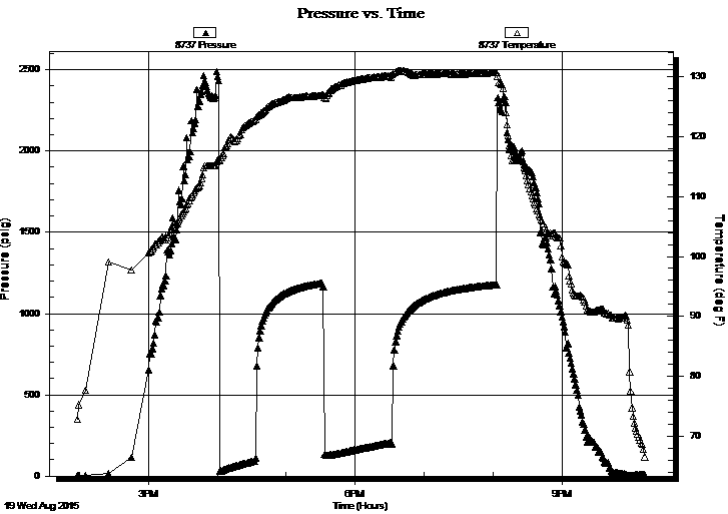
31-18s33w Scott,KS
Vulgamore #1-31
 Job Ticket: 64459 **DST#: 6**
 Test Start: 2015.08.19 @ 13:58:15

GENERAL INFORMATION:

Formation:	St. Louis B		
Deviated:	No Whipstock:	ft (KB)	Test Type: Conventional Bottom Hole (Reset)
Time Tool Opened:	16:02:00		Tester: Mike Roberts
Time Test Ended:	22:12:45		Unit No: 65
Interval:	4776.00 ft (KB) To 4815.00 ft (KB) (TVD)		Reference Elevations: 3055.00 ft (KB)
Total Depth:	4815.00 ft (KB) (TVD)		3045.00 ft (CF)
Hole Diameter:	7.88 inches	Hole Condition: Fair	KB to GR/CF: 10.00 ft

Serial #: 8737	Outside		
Press@RunDepth:	psig @ 4810.00 ft (KB)	Capacity:	8000.00 psig
Start Date:	2015.08.19	End Date:	2015.08.19
Start Time:	13:58:15	End Time:	22:12:45
		Time On Btm:	
		Time Off Btm:	

TEST COMMENT: IF: Built to 10" blow
 IS: No return blow
 FF: BOB in 37 min.
 FS: No return blow



PRESSURE SUMMARY

Time (Min.)	Pressure (psig)	Temp (deg F)	Annotation

Recovery

Length (ft)	Description	Volume (bbl)
32.00	ocw m 5% o 25%w 75%m	0.45
248.00	ocw m 5%o 15%w 80%m	3.48
186.00	2%o 30%m 68%w	2.61

Gas Rates

	Choke (inches)	Pressure (psig)	Gas Rate (MMcf/d)

* Recovery from multiple tests



**TRILOBITE
TESTING, INC.**

DRILL STEM TEST REPORT

TOOL DIAGRAM

Eagle Creek Exploration

31-18s33w Scott,KS

8100 E. 22nd ST.
North Building 1500 Suite A
Wichita KS 67226
ATTN: Gary Gensch

Vulgamore #1-31

Job Ticket: 64459

DST#: 6

Test Start: 2015.08.19 @ 13:58:15

Tool Information

Drill Pipe:	Length: 4772.00 ft	Diameter: 3.80 inches	Volume: 66.94 bbl	Tool Weight: 1500.00 lb
Heavy Wt. Pipe:	Length: 0.00 ft	Diameter: 0.00 inches	Volume: 0.00 bbl	Weight set on Packer: 20000.00 lb
Drill Collar:	Length: 0.00 ft	Diameter: 0.00 inches	Volume: 0.00 bbl	Weight to Pull Loose: 75000.00 lb
			<u>Total Volume: 66.94 bbl</u>	Tool Chased 0.00 ft
Drill Pipe Above KB:	12.00 ft			String Weight: Initial 50000.00 lb
Depth to Top Packer:	4776.00 ft			Final 54000.00 lb
Depth to Bottom Packer:	ft			
Interval between Packers:	39.00 ft			
Tool Length:	55.00 ft			
Number of Packers:	2	Diameter: 6.75 inches		

Tool Comments:

Tool Description

Tool Description	Length (ft)	Serial No.	Position	Depth (ft)	Accum. Lengths
Change Over Sub	1.00			4761.00	
Shut In Tool	5.00			4766.00	
Hydraulic tool	5.00			4771.00	
Packer	5.00			4776.00	16.00 Bottom Of Top Packer
Packer - Shale	0.00			4776.00	
Stubb	1.00			4777.00	
Perforations	33.00			4810.00	
Recorder	0.00	8846	Inside	4810.00	
Recorder	0.00	8737	Outside	4810.00	
Bullnose	5.00			4815.00	39.00 Anchor Tool
Total Tool Length:	55.00				



**TRILOBITE
TESTING, INC**

DRILL STEM TEST REPORT

FLUID SUMMARY

Eagle Creek Exploration

31-18s33w Scott,KS

8100 E. 22nd ST.
North Building 1500 Suite A
Wichita KS 67226
ATTN: Gary Gensch

Vulgamore #1-31

Job Ticket: 64459

DST#: 6

Test Start: 2015.08.19 @ 13:58:15

Mud and Cushion Information

Mud Type: Gel Chem

Mud Weight: 10.00 lb/gal

Viscosity: 60.00 sec/qt

Water Loss: 10.37 in³

Resistivity: 0.00 ohm.m

Salinity: 7600.00 ppm

Filter Cake: 1.00 inches

Cushion Type:

Cushion Length: ft

Cushion Volume: bbl

Gas Cushion Type:

Gas Cushion Pressure: psig

Oil API: 0 deg API

Water Salinity: 32000 ppm

Recovery Information

Recovery Table

Length ft	Description	Volume bbl
32.00	ocw m 5% o 25%w 75%m	0.449
248.00	ocw m 5%o 15%w 80%m	3.479
186.00	2%o 30%m 68%w	2.609

Total Length: 466.00 ft Total Volume: 6.537 bbl

Num Fluid Samples: 0

Num Gas Bombs: 0

Serial #:

Laboratory Name:

Laboratory Location:

Recovery Comments: RW= .34@ 72.1*= 32,000 ppm

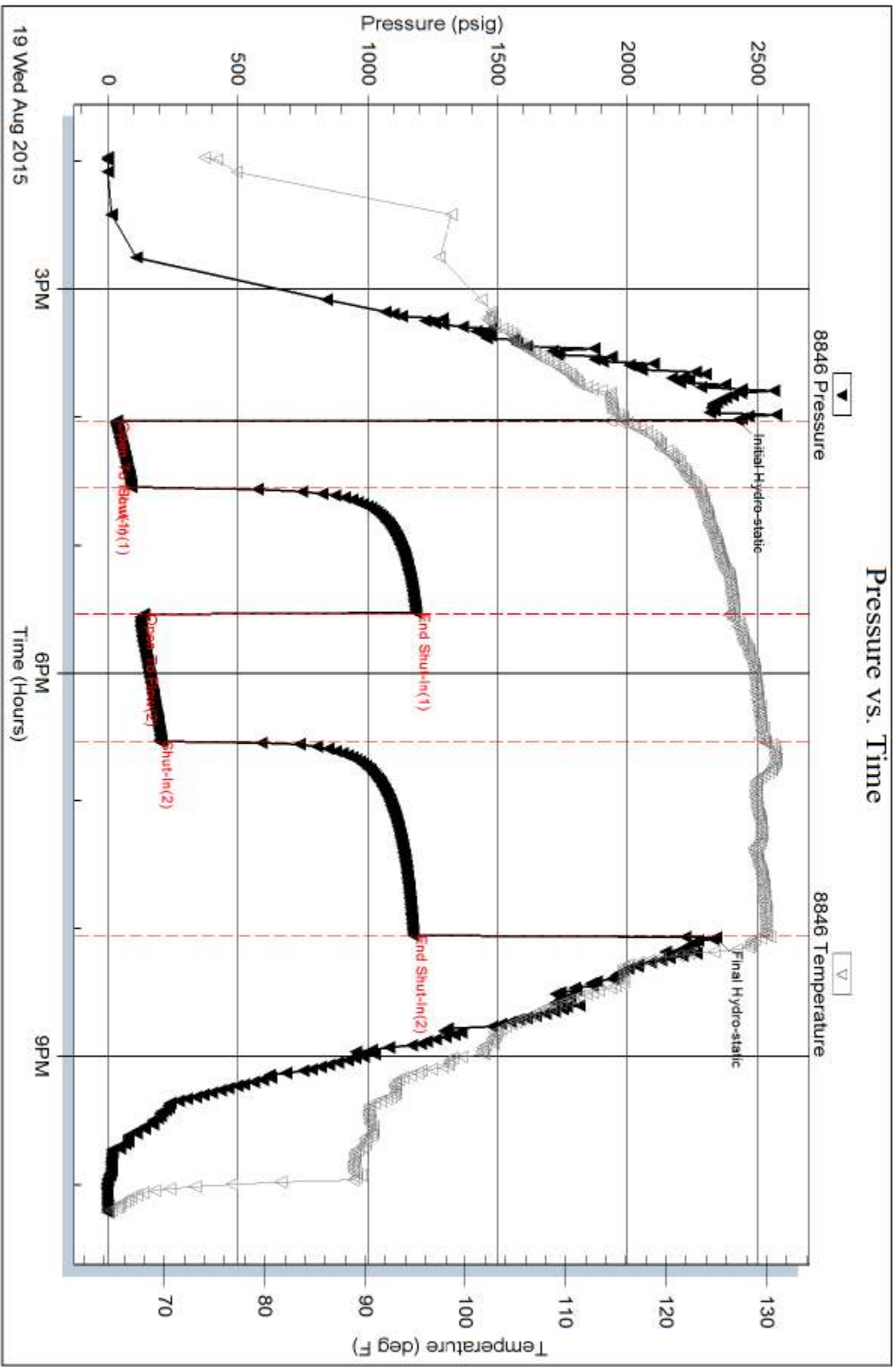
Serial #: 8846

Inside

Eagle Creek Exploration

Vulgamore #1-31

DST Test Number: 6



Trilobite Testing, Inc

Ref. No: 64459

Printed: 2015.08.20 @ 14:15:29

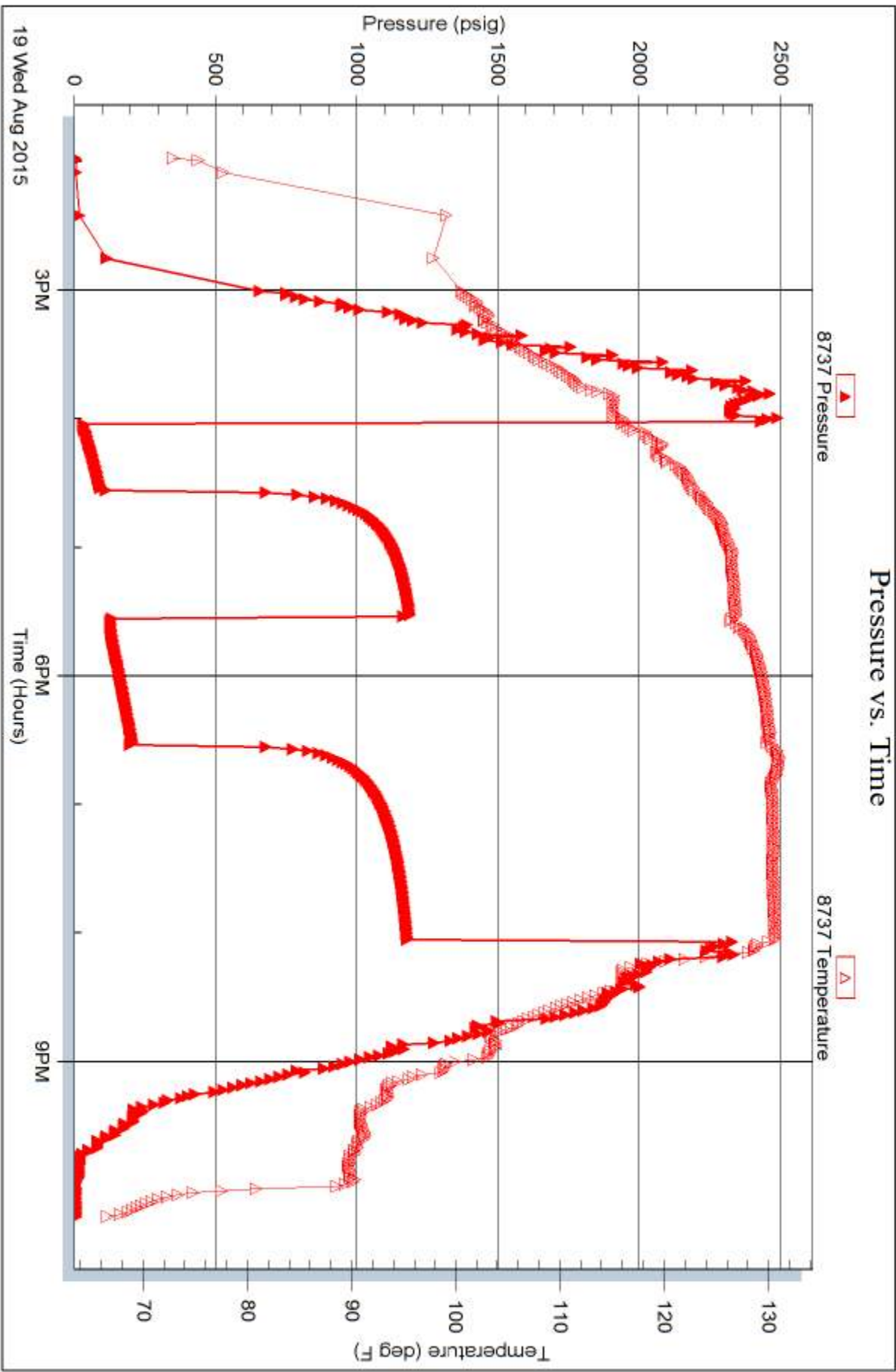
Serial #: 8737

Outside

Eagle Creek Exploration

Vulgamore #1-31

DST Test Number: 6



Trilobite Testing, Inc

Ref. No: 64459

Printed: 2015.08.20 @ 14:15:29



TRILOBITE TESTING INC.

1515 Commerce Parkway • Hays, Kansas 67601

Test Ticket

NO. **64454**

Well Name & No. Vulgamore 1-31 Test No. 1 Date 8-14-15
 Company Eagle Creek Exploration Elevation 3055 KB 3045 GL
 Address 8100 E 22nd ST N. BLDG 1500 Suite A Wichita KS 67226
 Co. Rep / Geo. Gary Gensch Rig Southwind 8
 Location: Sec. 31 Twp. 18S Rge. 33W Co. Scott State KS

Interval Tested 4166-4243 Zone Tested H-I
 Anchor Length 77 Drill Pipe Run 4171 Mud Wt. 9.3
 Top Packer Depth 4161 Drill Collars Run 0 Vis 54
 Bottom Packer Depth 4166 Wt. Pipe Run 0 WL 8.8
 Total Depth 4243 Chlorides 3000 ppm System LCM 2
 Blow Description IF: Built to 2" Blow
FS: NO Return Blow
FF: Built to 2" Blow
FS: NO Return Blow

Rec	Feet of	%gas	%oil	%water	%mud
<u>90</u>	<u>Feet of MUP with oil spots</u>				
Rec	Feet of	%gas	%oil	%water	%mud
Rec	Feet of	%gas	%oil	%water	%mud
Rec	Feet of	%gas	%oil	%water	%mud
Rec	Feet of	%gas	%oil	%water	%mud

Rec Total 90 BHT 117 Gravity _____ API RW _____ @ _____ °F Chlorides _____ ppm

(A) Initial Hydrostatic <u>2105</u>	<input checked="" type="checkbox"/> Test <u>\$1150.00</u>	T-On Location <u>21:50</u>
(B) First Initial Flow <u>57</u>	<input checked="" type="checkbox"/> Jars <u>\$250.00</u>	T-Started <u>23:49</u>
(C) First Final Flow <u>69</u>	<input checked="" type="checkbox"/> Safety Joint <u>\$75.00</u>	T-Open <u>02:29</u>
(D) Initial Shut-In <u>1077</u>	<input checked="" type="checkbox"/> Circ Sub <u>NO</u>	T-Pulled <u>05:29</u>
(E) Second Initial Flow <u>76</u>	<input type="checkbox"/> Hourly Standby _____	T-Out <u>07:19</u>
(F) Second Final Flow <u>93</u>	<input checked="" type="checkbox"/> Mileage <u>22 RT \$22.00</u>	Comments _____
(G) Final Shut-In <u>1078</u>	<input type="checkbox"/> Sampler _____	<input type="checkbox"/> Ruined Shale Packer _____
(H) Final Hydrostatic <u>2157</u>	<input type="checkbox"/> Straddle _____	<input type="checkbox"/> Ruined Packer _____
Initial Open <u>30</u>	<input type="checkbox"/> Shale Packer _____	<input type="checkbox"/> Extra Copies _____
Initial Shut-In <u>45</u>	<input type="checkbox"/> Extra Packer _____	Sub Total <u>0</u>
Final Flow <u>45</u>	<input type="checkbox"/> Extra Recorder _____	Total <u>1497</u>
Final Shut-In <u>60</u>	<input type="checkbox"/> Day Standby _____	MP/DST Disc't _____
	<input type="checkbox"/> Accessibility _____	
	Sub Total <u>\$1497.00</u>	

Approved By _____ Our Representative Mike Roberts

Trilobite Testing Inc. shall not be liable for damaged of any kind of the property or personnel of the one for whom a test is made, or for any loss suffered or sustained, directly or indirectly, through the use of its equipment, or its statements or opinion concerning the results of any test, tools lost or damaged in the hole shall be paid for at cost by the party for whom the test is made.



TRILOBITE TESTING INC.

1515 Commerce Parkway • Hays, Kansas 67601

Test Ticket

NO. **64455**

Well Name & No. Vulgamore 1-31 Test No. 2 Date 8-15-15
 Company Eagle Creek Exploration Elevation 3055 KB 3045 GL
 Address 8100 E 22nd ST N. BLDG 1500 Suite A Wichita KS 67226
 Co. Rep / Geo Gary Gensch Rig Southwind 8
 Location: Sec. 31 Twp. 18s Rge. 33w Co. Scott State KS

Interval Tested 4302-4321 Zone Tested K
 Anchor Length 19 Drill Pipe Run 15 Mud Wt. 9.3
 Top Packer Depth 4297 Drill Collars Run 0 Vis 55
 Bottom Packer Depth 4302 Wt. Pipe Run 0 WL 8.0
 Total Depth 4321 Chlorides 3500 ppm System LCM 2
 Blow Description IF: BOB in 7 Min
IS: No Return Blow
FF: BOB in 8 Min
FS: No Return Blow

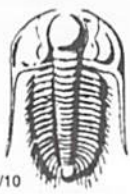
Rec	Feet of	%gas	%oil	%water	%mud
<u>77</u>	<u>OCWM</u>	<u>1</u>	<u>39</u>	<u>60</u>	
<u>248</u>	<u>MCW</u>		<u>50</u>	<u>50</u>	
<u>1039</u>	<u>SW</u>		<u>100</u>		

Rec Total 1364 BHT 125 Gravity — API RW 1.29 @ 74.7°F Chlorides 24000 ppm
 (A) Initial Hydrostatic 2117 Test \$1150.00 T-On Location ~~16:00~~
 (B) First Initial Flow 35 Jars — T-Started 16:42
 (C) First Final Flow 261 Safety Joint — T-Open 18:30
 (D) Initial Shut-In 1114 Circ Sub NC T-Pulled 22:30
 (E) Second Initial Flow 275 Hourly Standby — T-Out 00:34
 (F) Second Final Flow 589 Mileage 22RT \$22.00 Comments —
 (G) Final Shut-In 1111 Sampler —
 (H) Final Hydrostatic 2096 Straddle —
 Ruined Shale Packer —
 Ruined Packer —
 Extra Copies —
 Initial Open 30 Shale Packer —
 Initial Shut-In 60 Extra Packer —
 Final Flow 60 Extra Recorder —
 Final Shut-In 90 Day Standby —
 Accessibility —
 Sub Total \$1172.00/- Sub Total 0
 Total 1172 MP/DST Disc't —

Approved By _____

Our Representative Mike Roberts

Trilobite Testing Inc. shall not be liable for damaged of any kind of the property or personnel of the one for whom a test is made, or for any loss suffered or sustained, directly or indirectly, through the use of its equipment, or its statements or opinion concerning the results of any test, tools lost or damaged in the hole shall be paid for at cost by the party for whom the test is made.



TRILOBITE TESTING INC.

1515 Commerce Parkway • Hays, Kansas 67601

Test Ticket

NO. **64456**

Well Name & No. Vulgamore 1-31 Test No. 3 Date 8-16-15
 Company Eagle Creek Exploration Elevation 3055 KB 3045 GL
 Address 8100 E 22ND ST N. BLDG 1500 Suite A Wichita KS 67226
 Co. Rep / Geo. Gary Gensch Rig Southwind 8
 Location: Sec. 31 Twp. 18s Rge. 33w Co. Scott State KS

Interval Tested 4468-4502 Zone Tested Marmaton C
 Anchor Length 34 Drill Pipe Run 4455 Mud Wt. 9.3
 Top Packer Depth 4463 Drill Collars Run 0 Vis 57
 Bottom Packer Depth 4468 Wt. Pipe Run 0 WL 8.0
 Total Depth 4502 Chlorides 3300 ppm System LCM 2
 Blow Description IF: Built to 5" Blow
FS: No Return Blow
FF: Built to 8" Blow
FS: No Return Blow

Rec	Feet of	%gas	%oil	%water	%mud
<u>62</u>	<u>WCM</u>		<u>10</u>	<u>90</u>	
<u>124</u>	<u>MCW</u>		<u>80</u>	<u>20</u>	

Rec Total 186 BHT 126 Gravity — API RW 130 @ 64.4 °F Chlorides 31000 ppm
 (A) Initial Hydrostatic 2235 Test \$1150.00 T-On Location 20:31
 (B) First Initial Flow 23 Jars \$250.00 T-Started 22:54
 (C) First Final Flow 53 Safety Joint \$75.00 T-Open 12:27
 (D) Initial Shut-In 1045 Circ Sub NC T-Pulled 04:27
 (E) Second Initial Flow 62 Hourly Standby _____ T-Out 06:14
 (F) Second Final Flow 111 Mileage 22RT \$22.00 Comments Short Trip
 (G) Final Shut-In 1019 Sampler _____ Tight-run Jars &
 (H) Final Hydrostatic 2179 Straddle _____ Joint on DST #3 per Gary
 Ruined Shale Packer _____
 Ruined Packer _____
 Extra Copies _____

Initial Open 30
 Initial Shut-In 60
 Final Flow 60
 Final Shut-In 90

Shale Packer _____
 Extra Packer _____
 Extra Recorder _____
 Day Standby _____
 Accessibility _____
 Sub Total \$1492.00/-
 Sub Total _____
 Total 1497
 MP/DST Disc't _____

Approved By _____

Our Representative Mike Roberts



TRILOBITE TESTING INC.

1515 Commerce Parkway • Hays, Kansas 67601

Test Ticket

NO. **64457**

Well Name & No. Vulgamoxe 1-31 Test No. 4 Date 8-17-15
 Company Eagle Creek Exploration Elevation 3055 KB 3045 GL
 Address 8100 E 22nd St N. BLDG 1500 Suite A Wichita KS 67226
 Co. Rep / Geo. Gary Gensch Rig Southwind 8
 Location: Sec. 31 Twp. 18s Rge. 33W Co. SCOTT State KS

Interval Tested 4526-4556 Zone Tested Pawnee
 Anchor Length 30 Drill Pipe Run 4533 Mud Wt. 9.3
 Top Packer Depth 4521 Drill Collars Run Ø Vis 58
 Bottom Packer Depth 4526 Wt. Pipe Run Ø WL 10.4
 Total Depth 4556 Chlorides 5000 ppm System LCM 2
 Blow Description IF: Built to Weak Surface Blow
IS: No Return Blow
FF: No Blow
FS: No Return Blow

Rec	Feet of	%gas	%oil	%water	%mud
<u>10</u>	<u>MUD</u>			<u>100</u>	
Rec	Feet of	%gas	%oil	%water	%mud
Rec	Feet of	%gas	%oil	%water	%mud
Rec	Feet of	%gas	%oil	%water	%mud
Rec	Feet of	%gas	%oil	%water	%mud

Rec Total 10 BHT ~~117~~ 117 Gravity API RW @ °F Chlorides ppm

(A) Initial Hydrostatic <u>2241</u>	<input checked="" type="checkbox"/> Test <u>\$1150.00</u>	T-On Location <u>17:45</u>
(B) First Initial Flow <u>22</u>	<input type="checkbox"/> Jars <u> </u>	T-Started <u>18:17</u>
(C) First Final Flow <u>22</u>	<input type="checkbox"/> Safety Joint <u> </u>	T-Open <u>20:05</u>
(D) Initial Shut-In <u>936</u>	<input checked="" type="checkbox"/> Circ Sub <u>NC</u>	T-Pulled <u>22:05</u>
(E) Second Initial Flow <u>21</u>	<input type="checkbox"/> Hourly Standby <u> </u>	T-Out <u>23:55</u>
(F) Second Final Flow <u>21</u>	<input checked="" type="checkbox"/> Mileage <u>22RT #22.00</u>	Comments <u> </u>
(G) Final Shut-In <u>915</u>	<input type="checkbox"/> Sampler <u> </u>	<input type="checkbox"/> Ruined Shale Packer <u> </u>
(H) Final Hydrostatic <u>2211</u>	<input type="checkbox"/> Straddle <u> </u>	<input type="checkbox"/> Ruined Packer <u> </u>
Initial Open <u>30</u>	<input type="checkbox"/> Shale Packer <u> </u>	<input type="checkbox"/> Extra Copies <u> </u>
Initial Shut-In <u>30</u>	<input type="checkbox"/> Extra Packer <u> </u>	Sub Total <u>0</u>
Final Flow <u>30</u>	<input type="checkbox"/> Extra Recorder <u> </u>	Total <u>1172</u>
Final Shut-In <u>30</u>	<input type="checkbox"/> Day Standby <u> </u>	MP/DST Disc't <u> </u>
	<input type="checkbox"/> Accessibility <u> </u>	
	Sub Total <u>\$1172.00</u>	

Approved By Our Representative Mike Rohlf

Trilobite Testing Inc. shall not be liable for damaged of any kind of the property or personnel of the one for whom a test is made, or for any loss suffered or sustained, directly or indirectly, through the use of its equipment, or its statements or opinion concerning the results of any test, tools lost or damaged in the hole shall be paid for at cost by the party for whom the test is made.



TRILOBITE TESTING INC.

1515 Commerce Parkway • Hays, Kansas 67601

Test Ticket

NO. **64458**

Well Name & No. Vulgamore 1-31 Test No. 5 Date 8-18-15
 Company Eagle Creek Exploration Elevation 3055 KB 3045 GL
 Address 8100 E 22nd ST. N BLDG 1500 suite A Wichita KS 67226
 Co. Rep / Geo. Gary Gensch Rig Southwind 8
 Location: Sec. 31 Twp. 18s Rge. 33w Co. SCOTT State KS

Interval Tested 4728-4756 Zone Tested Marrow Sand
 Anchor Length 28 Drill Pipe Run 4720 Mud Wt. 9.4
 Top Packer Depth 4723 Drill Collars Run ∅ Vis 48
 Bottom Packer Depth 4728 Wt. Pipe Run ∅ WL 10.4
 Total Depth 4756 Chlorides 6400 ppm System LCM 2
 Blow Description IF: Built to weak surface Blow
IS: No Return Blow
FF: No Blow
FS: No Return Blow

Rec	Feet of	%gas	%oil	%water	%mud
<u>1</u>	<u>mud</u>			<u>100</u>	
Rec	Feet of	%gas	%oil	%water	%mud
Rec	Feet of	%gas	%oil	%water	%mud
Rec	Feet of	%gas	%oil	%water	%mud
Rec	Feet of	%gas	%oil	%water	%mud

Rec Total 1 BHT 121 Gravity — API RW — @ — °F Chlorides — ppm

(A) Initial Hydrostatic 2390 Test \$1150.00 T-On Location 21:00
 (B) First Initial Flow 21 Jars — T-Started 21:43
 (C) First Final Flow 21 Safety Joint — T-Open 23:49
 (D) Initial Shut-In 36 Circ Sub NC T-Pulled 01:49
 (E) Second Initial Flow 21 Hourly Standby — T-Out 03:22
 (F) Second Final Flow 21 Mileage 22RT \$22.00/- Comments —
 (G) Final Shut-In 32 Sampler —
 (H) Final Hydrostatic 2342 Straddle —
 Shale Packer —
 Extra Packer —
 Extra Recorder —
 Day Standby —
 Accessibility —
 Sub Total \$1172.00/-

Initial Open 30
 Initial Shut-In 30
 Final Flow 30
 Final Shut-In 30

Ruined Shale Packer —
 Ruined Packer —
 Extra Copies 0
 Sub Total 0
 Total 1172
 MP/DST Disc't —

Approved By _____ Our Representative Mike Roberts

TriLOBite Testing Inc. shall not be liable for damaged of any kind of the property or personnel of the one for whom a test is made, or for any loss suffered or sustained, directly or indirectly, through the use of its equipment, or its statements or opinion concerning the results of any test, tools lost or damaged in the hole shall be paid for at cost by the party for whom the test is made.



TRILOBITE TESTING INC.

1515 Commerce Parkway • Hays, Kansas 67601

Test Ticket

NO. **64459**

Well Name & No. Vulgamore 1-31 Test No. 6 Date 8-19-15
 Company Eagle Creek Exploration Elevation 3055 KB 3045 GL
 Address 900 E 22ND ST N BLDG 1500 Suite A Wichita KS 67226
 Co. Rep / Geo. Gary Gensch Rig Southwind 8
 Location: Sec. 31 Twp. 18S Rge. 33W Co. SCOTT State KS

Interval Tested 4776-4815 Zone Tested St. Louis B
 Anchor Length 39 Drill Pipe Run 4772 Mud Wt. 9.5
 Top Packer Depth 4771 Drill Collars Run 0 Vis 60
 Bottom Packer Depth 4776 Wt. Pipe Run 6 WL 10.4
 Total Depth 4815 Chlorides 7600 ppm System LCM 2

Blow Description IF: Built to 10" Blow
IS: No Return Blow
FF: BOB in 37 Min
FS: No Return Blow

Rec	Feet of	%gas	%oil	%water	%mud
<u>32</u>	<u>0cm</u>	<u>5</u>	<u>25</u>	<u>75</u>	<u>0</u>
<u>248</u>	<u>0cm</u>	<u>5</u>	<u>15</u>	<u>80</u>	<u>0</u>
<u>186</u>	<u>0cm</u>	<u>2</u>	<u>68</u>	<u>30</u>	<u>0</u>
Rec	Feet of	%gas	%oil	%water	%mud
Rec	Feet of	%gas	%oil	%water	%mud

Rec Total 466 BHT 130 Gravity — API RW 34 @ 72.1° F Chlorides 32,000 ppm
 (A) Initial Hydrostatic 2424 Test \$1150.00 T-On Location 13:30
 (B) First Initial Flow 30 Jars — T-Started 13:58
 (C) First Final Flow 91 Safety Joint — T-Open 16:02
 (D) Initial Shut-In 1184 Circ Sub NC T-Pulled 20:02
 (E) Second Initial Flow 137 Hourly Standby — T-Out 22:12
 (F) Second Final Flow 197 Mileage 22RT = \$22.00/RT Comments Mileage x 2
 (G) Final Shut-In 1173 Sampler — Load Tools 8-20-15
 (H) Final Hydrostatic 2329 Straddle — 08:30
 Shale Packer \$250.00 Ruined Shale Packer —
 Extra Packer — Ruined Packer —
 Extra Recorder — Sub Total 0
 Day Standby 1444 Total 1444
 Accessibility — MP/DST Disc't —
 Sub Total \$1422.00/-

Initial Open 30
 Initial Shut-In 60
 Final Flow 60
 Final Shut-In 90

Approved By _____ Our Representative Mike Roberts
 TriLOBITE TESTING INC. shall not be liable for damaged or any kind of the property or personnel of the one for whom a test is made, or for any loss suffered or sustained, directly or indirectly, through the use of its equipment, or its statements or opinion concerning the results of any test, tools lost or damaged in the hole shall be paid for at cost by the party for whom the test is made.