



TRILOBITE TESTING, INC.

DRILL STEM TEST REPORT

Berexco LLC
 2020 N. Bramblewood
 Wichita KS 67206
 ATTN: Bryan Bynog

26-1S-36W Rawlins KS

Lillie #4-26

Job Ticket: 62584

DST#: 1

Test Start: 2015.06.11 @ 03:03:59

GENERAL INFORMATION:

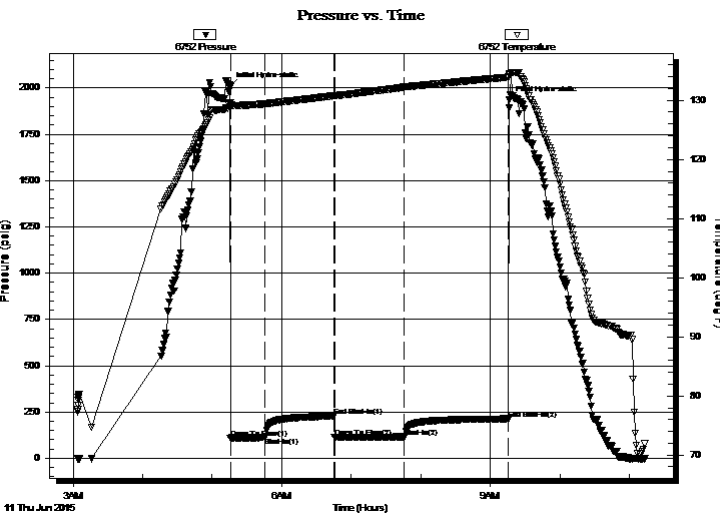
Formation: **Oread**
 Deviated: No Whipstock: ft (KB)
 Time Tool Opened: 05:15:39
 Time Test Ended: 11:13:08
 Interval: **4040.00 ft (KB) To 4080.00 ft (KB) (TVD)**
 Total Depth: 4080.00 ft (KB) (TVD)
 Hole Diameter: 7.88 inches Hole Condition: Good
 Test Type: Conventional Bottom Hole (Initial)
 Tester: Ryan Nichols
 Unit No: 78
 Reference Elevations: 3236.00 ft (KB)
 3225.00 ft (CF)
 KB to GR/CF: 11.00 ft

Serial #: 6752

Inside

Press@RunDepth: 115.03 psig @ 4041.00 ft (KB) Capacity: 8000.00 psig
 Start Date: 2015.06.11 End Date: 2015.06.11 Last Calib.: 2015.06.11
 Start Time: 03:04:00 End Time: 11:13:09 Time On Btm: 2015.06.11 @ 05:15:29
 Time Off Btm: 2015.06.11 @ 09:16:08

TEST COMMENT: 30 IF - Opened tool going threw a bridge 10' off bottom, Surface blow
 60 ISI - No return
 60 FF - No blow
 90 FSI - No return



PRESSURE SUMMARY

Time (Min.)	Pressure (psig)	Temp (deg F)	Annotation
0	2008.56	129.53	Initial Hydro-static
1	107.64	128.81	Open To Flow (1)
30	112.00	129.38	Shut-In(1)
90	226.70	130.76	End Shut-In(1)
90	112.71	130.73	Open To Flow (2)
150	115.03	132.23	Shut-In(2)
241	213.21	133.91	End Shut-In(2)
241	1934.21	134.24	Final Hydro-static

Recovery

Length (ft)	Description	Volume (bbl)
185.00	Mud 100%	0.91

Gas Rates

	Choke (inches)	Pressure (psig)	Gas Rate (Mcf/d)



**TRILOBITE
TESTING, INC**

DRILL STEM TEST REPORT

FLUID SUMMARY

Berexco LLC

26-1S-36W Rawlins KS

2020 N. Bramblewood
Wichita KS 67206

Lillie #4-26

Job Ticket: 62584

DST#: 1

ATTN: Bryan Bynog

Test Start: 2015.06.11 @ 03:03:59

Mud and Cushion Information

Mud Type: Gel Chem

Cushion Type:

Oil API:

deg API

Mud Weight: 9.00 lb/gal

Cushion Length:

ft

Water Salinity:

ppm

Viscosity: 54.00 sec/qt

Cushion Volume:

bbbl

Water Loss: 6.80 in³

Gas Cushion Type:

Resistivity: ohm.m

Gas Cushion Pressure:

psig

Salinity: 1000.00 ppm

Filter Cake: 2.00 inches

Recovery Information

Recovery Table

Length ft	Description	Volume bbl
185.00	Mud 100%	0.910

Total Length: 185.00 ft Total Volume: 0.910 bbl

Num Fluid Samples: 0

Num Gas Bombs: 0

Serial #:

Laboratory Name:

Laboratory Location:

Recovery Comments:

