



**TRILOBITE  
TESTING, INC**

# DRILL STEM TEST REPORT

Berexco LLC  
2020 N. Bramblewood  
Wichita KS 67206  
ATTN: Bryan Bynog

**26-1S-36W Rawlins KS**

**Lillie #4-26**

Job Ticket: 62585

**DST#: 2**

Test Start: 2015.06.12 @ 00:28:00

## GENERAL INFORMATION:

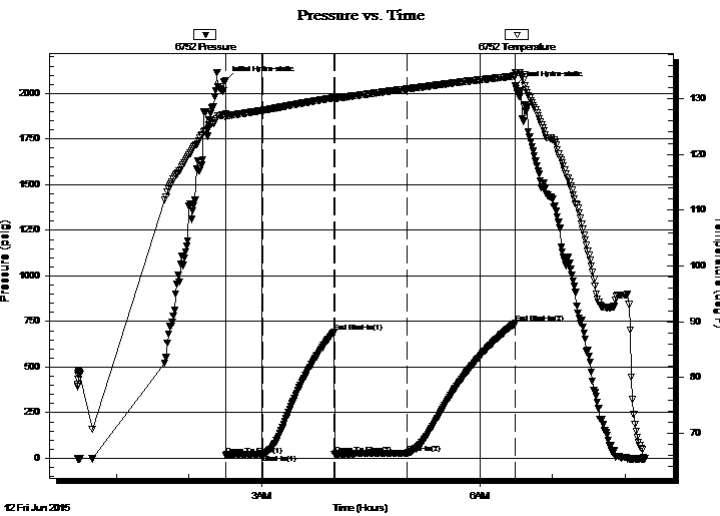
Formation: **LKC " A "**  
 Deviated: No Whipstock: ft (KB)  
 Time Tool Opened: 02:30:20  
 Time Test Ended: 08:16:09  
 Interval: **4110.00 ft (KB) To 4210.00 ft (KB) (TVD)**  
 Total Depth: 4210.00 ft (KB) (TVD)  
 Hole Diameter: 7.88 inches Hole Condition: Good  
 Test Type: Conventional Bottom Hole (Reset)  
 Tester: Ryan Nichols  
 Unit No: 78  
 Reference Elevations: 3236.00 ft (KB)  
 3225.00 ft (CF)  
 KB to GR/CF: 11.00 ft

## Serial #: 6752

Inside

Press@RunDepth: 28.00 psig @ 4111.00 ft (KB) Capacity: 8000.00 psig  
 Start Date: 2015.06.12 End Date: 2015.06.12 Last Calib.: 2015.06.12  
 Start Time: 00:28:01 End Time: 08:16:10 Time On Btm: 2015.06.12 @ 02:30:10  
 Time Off Btm: 2015.06.12 @ 06:29:30

TEST COMMENT: 30 IF - Surface blow built to 1"  
 60 ISI - No return  
 60 FF - No blow  
 90 FSI - No return



## PRESSURE SUMMARY

Time (Min.)	Pressure (psig)	Temp (deg F)	Annotation
0	2071.02	127.29	Initial Hydro-static
1	18.02	126.56	Open To Flow (1)
31	21.83	127.88	Shut-In(1)
90	693.77	130.15	End Shut-In(1)
90	22.98	129.86	Open To Flow (2)
150	28.00	131.72	Shut-In(2)
239	738.95	134.04	End Shut-In(2)
240	2042.10	134.70	Final Hydro-static

## Recovery

Length (ft)	Description	Volume (bbl)
10.00	Mud 100%M	0.05

\* Recovery from multiple tests

## Gas Rates

Choke (inches)	Pressure (psig)	Gas Rate (Mcf/d)



**TRILOBITE  
TESTING, INC**

# DRILL STEM TEST REPORT

**FLUID SUMMARY**

Berexco LLC

**26-1S-36W Rawlins KS**

2020 N. Bramblewood  
Wichita KS 67206

**Lillie #4-26**

Job Ticket: 62585

**DST#: 2**

ATTN: Bryan Bynog

Test Start: 2015.06.12 @ 00:28:00

## Mud and Cushion Information

Mud Type: Gel Chem

Cushion Type:

Oil API:

deg API

Mud Weight: 9.00 lb/gal

Cushion Length:

ft

Water Salinity:

ppm

Viscosity: 60.00 sec/qt

Cushion Volume:

bbbl

Water Loss: 6.79 in<sup>3</sup>

Gas Cushion Type:

Resistivity: ohm.m

Gas Cushion Pressure:

psig

Salinity: 1000.00 ppm

Filter Cake: 2.00 inches

## Recovery Information

Recovery Table

Length ft	Description	Volume bbl
10.00	Mud 100%M	0.049

Total Length: 10.00 ft      Total Volume: 0.049 bbl

Num Fluid Samples: 0

Num Gas Bombs: 0

Serial #:

Laboratory Name:

Laboratory Location:

Recovery Comments:

### Pressure vs. Time

