



**TRILOBITE  
TESTING, INC.**

# DRILL STEM TEST REPORT

Shakespeare Oil Comp. Inc

**28-16-34 Scott, Ks**

202 West Main St  
Salem, Il  
62881-1519  
ATTN: Tim Priest

**Blakey #2-23**

Job Ticket: 45510

**DST#: 2**

Test Start: 2015.09.10 @ 17:32:00

## GENERAL INFORMATION:

Formation: **Pawnee - Ft Scott**  
 Deviated: No Whipstock: 0.00 ft (KB)  
 Time Tool Opened: 19:35:00  
 Time Test Ended: 00:39:30  
 Interval: **4554.00 ft (KB) To 4630.00 ft (KB) (TVD)**  
 Total Depth: 4630.00 ft (KB) (TVD)  
 Hole Diameter: 7.88 inches Hole Condition: Fair  
 Test Type: Conventional Bottom Hole (Reset)  
 Tester: Bradley Walter  
 Unit No: 84  
 Reference Elevations: 3149.00 ft (KB)  
 3140.00 ft (CF)  
 KB to GR/CF: 9.00 ft

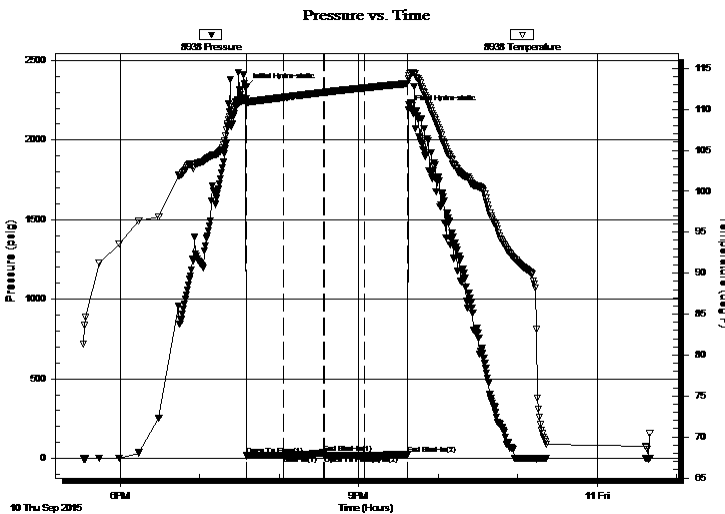
## Serial #: 8938

Inside

Press @ Run Depth: 18.84 psig @ 4555.00 ft (KB) Capacity: 8000.00 psig  
 Start Date: 2015.09.10 End Date: 2015.09.11 Last Calib.: 2015.09.10  
 Start Time: 17:32:15 End Time: 00:39:30 Time On Btm: 2015.09.10 @ 19:34:45  
 Time Off Btm: 2015.09.10 @ 21:37:15

TEST COMMENT: IF: Surface blow, died @ 8 min.  
 IS: No return.  
 FF: No blow.  
 FS: No return.

## PRESSURE SUMMARY



Time (Min.)	Pressure (psig)	Temp (deg F)	Annotation
0	2330.48	111.35	Initial Hydro-static
1	17.85	110.69	Open To Flow (1)
29	19.28	111.47	Shut-In(1)
59	35.39	112.07	End Shut-In(1)
60	19.17	112.08	Open To Flow (2)
90	18.84	112.62	Shut-In(2)
122	27.86	113.15	End Shut-In(2)
123	2191.24	113.71	Final Hydro-static

## Recovery

Length (ft)	Description	Volume (bbl)
2.00	mud 100% (oil specs in tool)	0.01

\* Recovery from multiple tests

## Gas Rates

Choke (inches)	Pressure (psig)	Gas Rate (Mcf/d)



**TRILOBITE  
TESTING, INC.**

# DRILL STEM TEST REPORT

**FLUID SUMMARY**

Shakespeare Oil Comp. Inc

**28-16-34 Scott, Ks**

202 West Main St  
Salem, Il  
62881-1519  
ATTN: Tim Priest

**Blakey #2-23**

Job Ticket: 45510

**DST#: 2**

Test Start: 2015.09.10 @ 17:32:00

## Mud and Cushion Information

Mud Type: Gel Chem

Cushion Type:

Oil API:

0 deg API

Mud Weight: 9.00 lb/gal

Cushion Length:

ft

Water Salinity:

0 ppm

Viscosity: 54.00 sec/qt

Cushion Volume:

bbbl

Water Loss: 7.20 in<sup>3</sup>

Gas Cushion Type:

Resistivity: 0.00 ohm.m

Gas Cushion Pressure:

psig

Salinity: 5000.00 ppm

Filter Cake: 1.00 inches

## Recovery Information

Recovery Table

Length ft	Description	Volume bbl
2.00	mud 100%m (oil specs in tool)	0.010

Total Length: 2.00 ft      Total Volume: 0.010 bbl

Num Fluid Samples: 0

Num Gas Bombs: 0

Serial #:

Laboratory Name:

Laboratory Location:

Recovery Comments:

Serial #: 8938

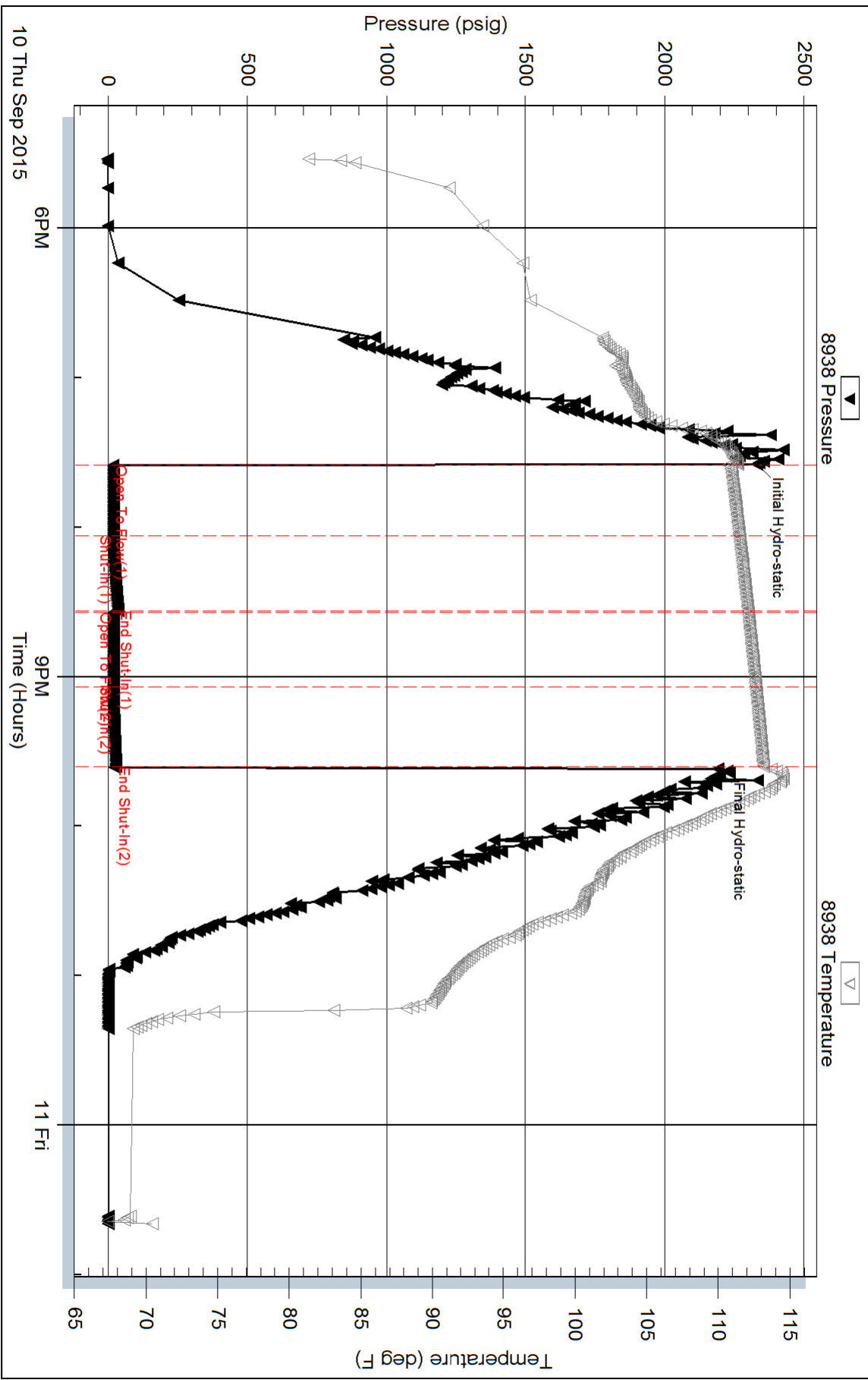
Inside

Shakespeare Oil Corp. Inc

Blakey #2-23

DST Test Number: 2

# Pressure vs. Time



Triobite Testing, Inc

Ref. No: 45510

Printed: 2015.09.11 @ 01:42:51