

DIAMOND TESTING GENERAL REPORT

Jake Fahrenbruch, Tester

Cell: (620) 282-8977 / Office: (800) 542-7313



TEST INFORMATION

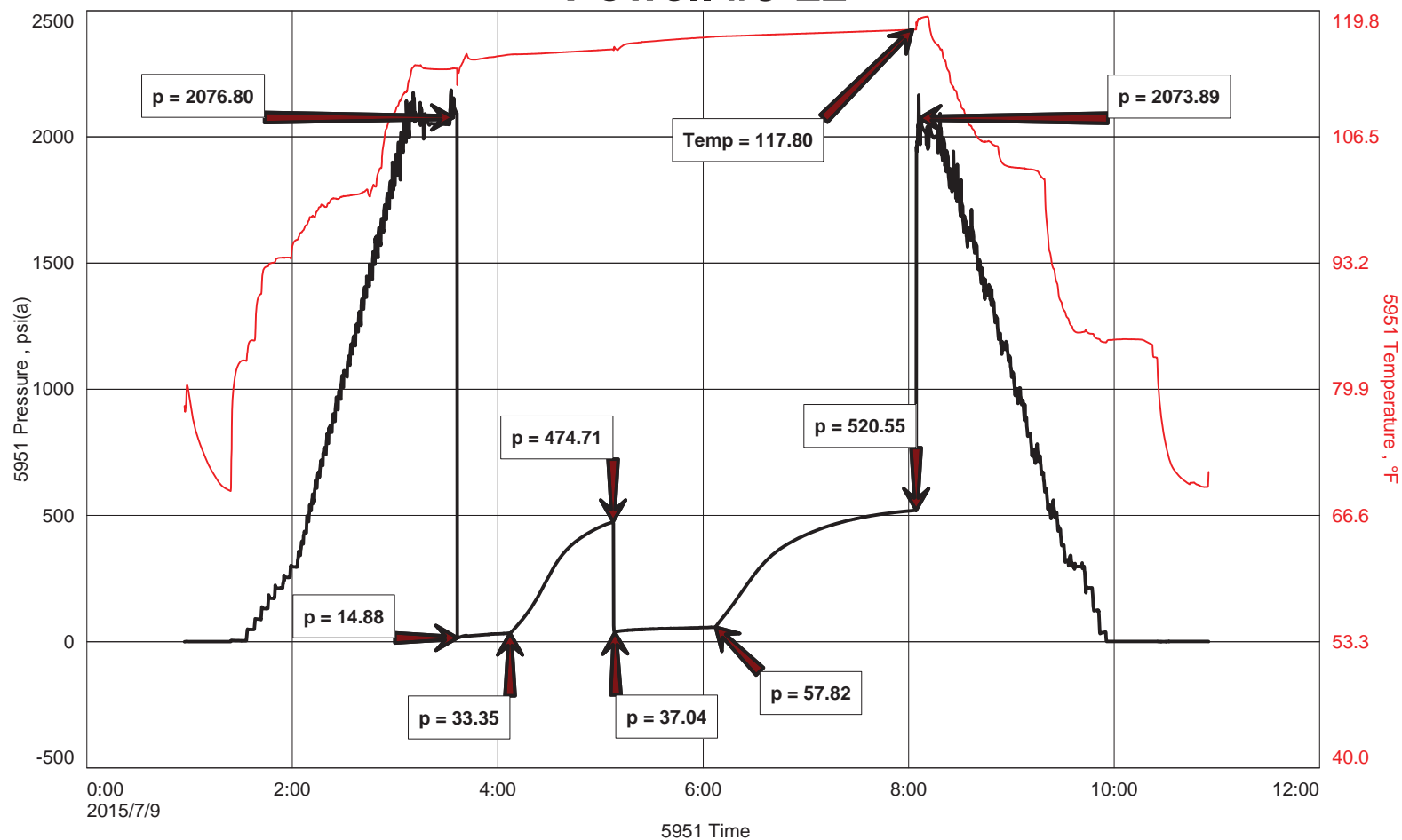
Well Name	Powell #9-22
Company Name	Berexco LLC
Formation	Lansing "H" 4435'-4473'
Test Type	Bottom-Hole w/J,Jnt,ShPkr X 2
Surface Location	Sec 22-29s-33w-Haskell Co.-KS
KB Elevation (SL)	2954.000
Gauge Name	5951
Start Test Date	2015/07/09
Start Test Time	00:57:00
Final Test Date	2015/07/09
Final Test Time	10:56:00
Job Number	F393
Contact	Evan Mayhew
Site Contact	Ed Grieves

TEST RESULTS

Initial flow, blow increased to 7.5". No blowback.
 Final flow, blow increased to BOB in 20 minutes. No blowback.

Recovered 100' of SGCOCM, 5% gas, 25% oil, 70% mud
 650' of GAS IN PIPE
 ----- (tool sample: GCOM, 10% gas, 40% oil, 50% mud) -----

Powell #9-22





DIAMOND TESTING
 P.O. Box 157
 HOISINGTON, KANSAS 67544
 (800) 542-7313
DRILL-STEM TEST TICKET
 FILE: POWELL 9D572

ON LOCATION:	<u>00:30</u>
START RECORDERS:	<u>00:57</u>
STOP RECORDERS:	<u>10:56</u>

Company BEREXCO LLC Lease & Well No. POWELL #9-22
 Contractor BEREXCO LLC REG #1 Charge to BEREXCO LLC
 Elevation 2954' KB Formation LANSING "H" Effective Pay _____ Ft. Ticket No. F393
 Date 7-9-15 Sec. 22 Twp. 29S Range 33W County HASKELL State KANSAS
 Test Approved By ED GRIEVES Diamond Representative JAKE FAHRENBRUCH

Formation Test No. 2 Interval Tested from 4435 ft. to 4473 ft. Total Depth 4473 ft.
 Packer Depth 4430 ft. Size 6 3/4 in. Packer depth _____ ft. Size 6 3/4 in.
 Packer Depth 4435 ft. Size 6 3/4 in. Packer depth _____ ft. Size 6 3/4 in.
 Depth of Selective Zone Set _____

Top Recorder Depth (Inside) 4428 ft. Recorder Number 5951 Cap. 5000 P.S.I.
 Bottom Recorder Depth (Outside) 4436 ft. Recorder Number 5584 Cap. 5000 P.S.I.
 Below Straddle Recorder Depth _____ ft. Recorder Number _____ Cap. _____ P.S.I.

Mud Type CHEMICAL Viscosity 48 (3" UCM) Drill Collar Length 616 ft. I.D. 2 1/4 in.
 Weight 9.1 Water Loss 9.2 cc. Weight Pipe Length _____ ft. I.D. 2 7/8 in.
 Chlorides 4200 P.P.M. Drill Pipe Length 3786 ft. I.D. 3 1/2 in.
 Jars: Make STERLING Serial Number #5, JAW 54PKR2 Test Tool Length 33 ft. Tool Size 3 1/2-IF in.
 Did Well Flow? NO Reversed Out NO Anchor Length 38 ft. Size 4 1/2-FH in.
 Main Hole Size 7 7/8 Tool Joint Size 4 1/2" XH in. Surface Choke Size 1 in. Bottom Choke Size 5/8 in.

Blow: 1st Open: BLOW INCREASED TO 7 1/2". NO BLOWBACK.
 2nd Open: BLOW INCREASED TO BOB IN 20 MINUTES.

Recovered 100 ft. of SGCCOM 5" GAS, 25" OIL, 70" MUD
 Recovered _____ ft. of 650' GAS IN PIPE
 Recovered _____ ft. of TOOL SAMPLE: GCOM 10" GAS, 40" OIL, 50" MUD
 Recovered _____ ft. of _____
 Recovered _____ ft. of _____

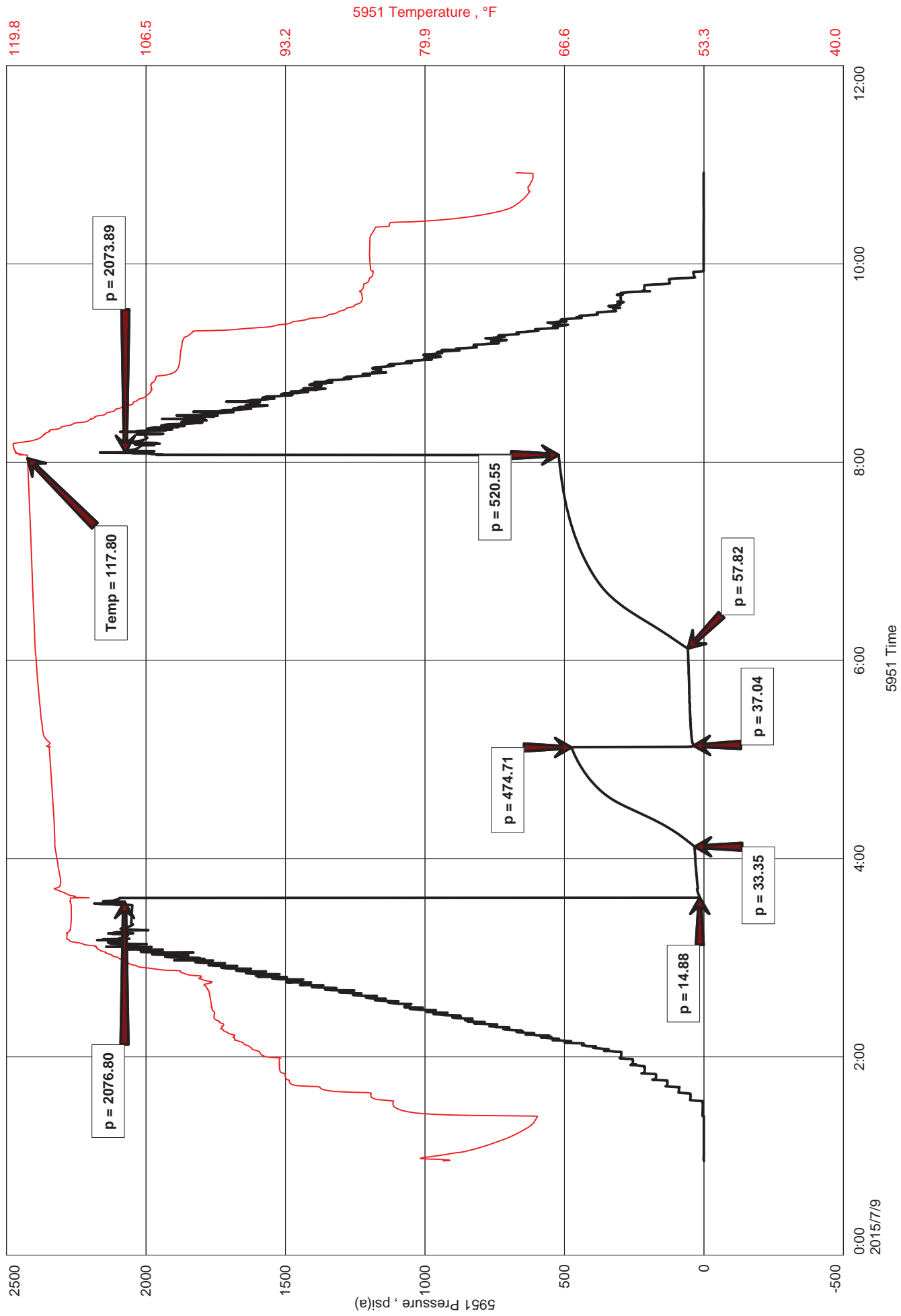
Recovered _____ ft. of _____	Price Job
Recovered _____ ft. of _____	Other Charges <u>J&J</u>
Remarks: _____	<u>54PKR X2</u>
_____	<u>78 MRT (GC)</u>
_____	Total

Time Set Packer(s) 08:39 A.M. Time Started Off Bottom 08:09 A.M. Maximum Temperature 118 °F
 P.M. P.M.

Initial Hydrostatic Pressure..... (A) 2077 P.S.I.
 Initial Flow Period..... Minutes 30 (B) 15 P.S.I. to (C) 33 P.S.I.
 Initial Closed In Period..... Minutes 60 (D) 475 P.S.I.
 Final Flow Period..... Minutes 60 (E) 37 P.S.I. to (F) 58 P.S.I.
 Final Closed In Period..... Minutes 120 (G) 521 P.S.I. Thanks
 Final Hydrostatic Pressure..... (H) 2074 P.S.I. Jacob Johnson

Diamond Testing shall not be liable for damages of any kind to the property or personnel of the one for whom a test is made or for any loss suffered or sustained, directly or indirectly, through the use of its equipment, or its statement or opinion concerning the result of any test. Tools lost or damaged in the hole shall be paid for at cost by the party for whom the test is made.

Powell #9-22





DIAMOND TESTING
P.O. Box 157
HOISINGTON, KANSAS 67544
(800) 542-7313
DRILL-STEM TEST TICKET
FILE: POWELL9DST2

TIME ON: 00:57
TIME OFF: 10:56

Company BEREXCO LLC Lease & Well No. POWELL #9-22
Contractor BEREDCO LLC RIG #1 Charge to BEREXCO LLC
Elevation 2954' KB Formation LANSING "H" Effective Pay _____ Ft. Ticket No. F393
Date 7-9-15 Sec. 22 Twp. 29S S Range 33W W County HASKELL State KANSAS
Test Approved By ED GRIEVES Diamond Representative JAKE FAHRENBRUCH

Formation Test No. 2 Interval Tested from 4435 ft. to 4473 ft. Total Depth 4473 ft.
Packer Depth 4430 ft. Size 6 3/4 in. Packer depth _____ ft. Size 6 3/4 in.
Packer Depth 4435 ft. Size 6 3/4 in. Packer depth _____ ft. Size 6 3/4 in.
Depth of Selective Zone Set _____

Top Recorder Depth (Inside) 4418 ft. Recorder Number 5951 Cap. 5000 P.S.I.
Bottom Recorder Depth (Outside) 4436 ft. Recorder Number 5584 Cap. 5000 P.S.I.
Below Straddle Recorder Depth _____ ft. Recorder Number _____ Cap. _____ P.S.I.

Mud Type CHEMICAL Viscosity 48 (3# LCM) Drill Collar Length 616 ft. I.D. 2 1/4 in.
Weight 9.1 Water Loss 9.2 cc. Weight Pipe Length 0 ft. I.D. 2 7/8 in.
Chlorides 4,200 P.P.M. Drill Pipe Length 3,786 ft. I.D. 3 1/2 in.
Jars: Make STERLING Serial Number #5 J,J,ShPkrX2 Test Tool Length 33 ft. Tool Size 3 1/2-IF in.
Did Well Flow? NO Reversed Out NO Anchor Length 38 ft. Size 4 1/2-FH in.
Main Hole Size 7 7/8 Tool Joint Size 4 1/2 XH in. ALL PERFORATIONS IN ANCHOR Surface Choke Size 1 in. Bottom Choke Size 5/8 in.

Blow: 1st Open: Blow increased to 7.5". No blowback.
2nd Open: Blow increased to BOB in 20 minutes. No blowback.

Recovered 100 ft. of SGCOCM 5% gas, 25% oil, 70% mud
Recovered _____ ft. of 650' GAS IN PIPE
Recovered _____ ft. of (tool sample: GCOM, 10% gas, 40% oil, 50% mud)
Recovered _____ ft. of _____

Recovered _____ ft. of _____	Price Job
Recovered _____ ft. of _____	Other Charges
Remarks: _____	Insurance
_____	Total

Time Set Packer(s) 03:39 A.M. P.M. Time Started Off Bottom 08:09 A.M. P.M. Maximum Temperature 118F

Initial Hydrostatic Pressure..... (A) 2077 P.S.I.
Initial Flow Period..... Minutes 30 (B) 15 P.S.I. to (C) 33 P.S.I.
Initial Closed In Period..... Minutes 60 (D) 475 P.S.I.
Final Flow Period..... Minutes 60 (E) 37 P.S.I. to (F) 58 P.S.I.
Final Closed In Period..... Minutes 120 (G) 521 P.S.I.
Final Hydrostatic Pressure..... (H) 2074 P.S.I.

Diamond Testing shall not be liable for damages of any kind to the property or personnel of the one for whom a test is made or for any loss suffered or sustained, directly or indirectly, through the use of its equipment, or its statement or opinion concerning the result of any test. Tools lost or damaged in the hole shall be paid for at cost by the party for whom the test is made.