

# DIAMOND TESTING GENERAL REPORT

**Jake Fahrenbruch, Tester**

Cell: (620) 282-8977 / Office: (800) 542-7313



## TEST INFORMATION

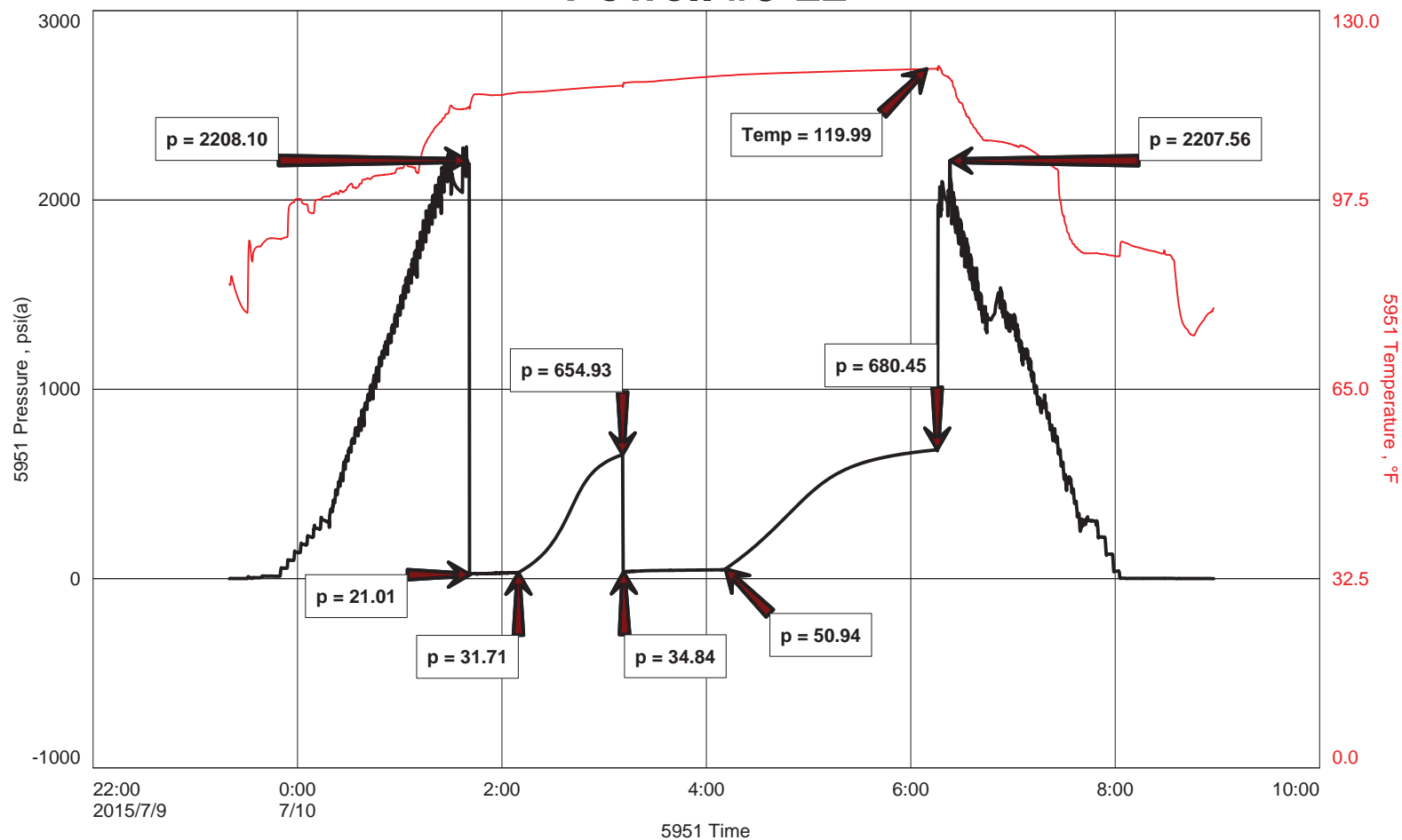
<b>Well Name</b>	Powell #9-22
<b>Company Name</b>	Berexco LLC
<b>Formation</b>	Lansing "I" 4497'-4511'
<b>Test Type</b>	Bottom-Hole w/J,Jnt,ShPkr X 2
<b>Surface Location</b>	Sec 22-29s-33w-Haskell Co.-KS
<b>KB Elevation (SL)</b>	2954.000
<b>Gauge Name</b>	5951
<b>Start Test Date</b>	2015/07/09
<b>Start Test Time</b>	23:20:00
<b>Final Test Date</b>	2015/07/10
<b>Final Test Time</b>	08:58:00
<b>Job Number</b>	F394
<b>Contact</b>	Evan Mayhew
<b>Site Contact</b>	Ed Grieves

## TEST RESULTS

Initial flow, blow increased to 4.5". No blowback.  
 Final flow, blow increased to 9". No blowback.

Recovered 40' of SOCM, 5% oil, 95% mud  
 ----- 150' GAS IN PIPE -----  
 ----- (tool sample: HOCM, 32% oil, 68% mud) -----

## Powell #9-22





**DIAMOND TESTING**  
 P.O. Box 157  
 HOISINGTON, KANSAS 67544  
 (800) 542-7313  
**DRILL-STEM TEST TICKET**  
 FILE: POWELL9DST3

ON LOCATION:	<u>22:45</u>
START RECORDERS:	<u>23:20</u>
STOP RECORDERS:	<u>08:58</u>

Company BEREXCO LLC Lease & Well No. POWELL #9-22  
 Contractor BEREXCO LLC RIG # 1 Charge to BEREXCO LLC  
 Elevation 2954' KB Formation LANSING 'I' Effective Pay --- Ft. Ticket No. F394  
 Date 7-10-15 Sec. 22 Twp. 29S Range 33W County HASSELL State KS  
 Test Approved By ED GRIEVES Diamond Representative JAKE FAHRENBRUCH

Formation Test No. 3 Interval Tested from 4497 ft. to 4511 ft. Total Depth 4511 ft.  
 Packer Depth 4492 ft. Size 6 3/4 in. Packer depth --- ft. Size 6 3/4 in.  
 Packer Depth 4497 ft. Size 6 3/4 in. Packer depth --- ft. Size 6 3/4 in.  
 Depth of Selective Zone Set ---

Top Recorder Depth (Inside) 4480 ft. Recorder Number 5584 Cap. 5000 P.S.I.  
 Bottom Recorder Depth (Outside) 4498 ft. Recorder Number 5951 Cap. 5000 P.S.I.  
 Below Straddle Recorder Depth --- ft. Recorder Number --- Cap. --- P.S.I.

Mud Type CHEMICAL Viscosity 46 (4\*LCM) Drill Collar Length 616 ft. I.D. 2 1/4 in.  
 Weight 9.1 Water Loss 8.8 cc. Weight Pipe Length --- ft. I.D. 2 7/8 in.  
 Chlorides 3600 P.P.M. Drill Pipe Length 3846 ft. I.D. 3 1/2 in.  
 Jars: Make STERLING Serial Number 5 J, J, 54PKr X2 Test Tool Length 33 ft. Tool Size 3 1/2-IF in.  
 Did Well Flow? --- Reversed Out --- Anchor Length 14 ft. Size 4 1/2-FH in.  
 Main Hole Size 7 7/8 Tool Joint Size 4 1/2" X 1 1/4" Surface Choke Size 1 in. Bottom Choke Size 5/8 in.

Blow: 1st Open: BLOW INCREASED TO 4 1/2". No BB  
 2nd Open: BLOW INCREASED TO 9". No BB

Recovered 40 ft. of SOCM 5% OIL, 95% MUD  
 Recovered --- ft. of 150' GAS IN PIPE  
 Recovered --- ft. of TOOL SAMPLE: HOCM 32% OIL, 68% MUD  
 Recovered --- ft. of ---  
 Recovered --- ft. of ---  
 Recovered --- ft. of ---

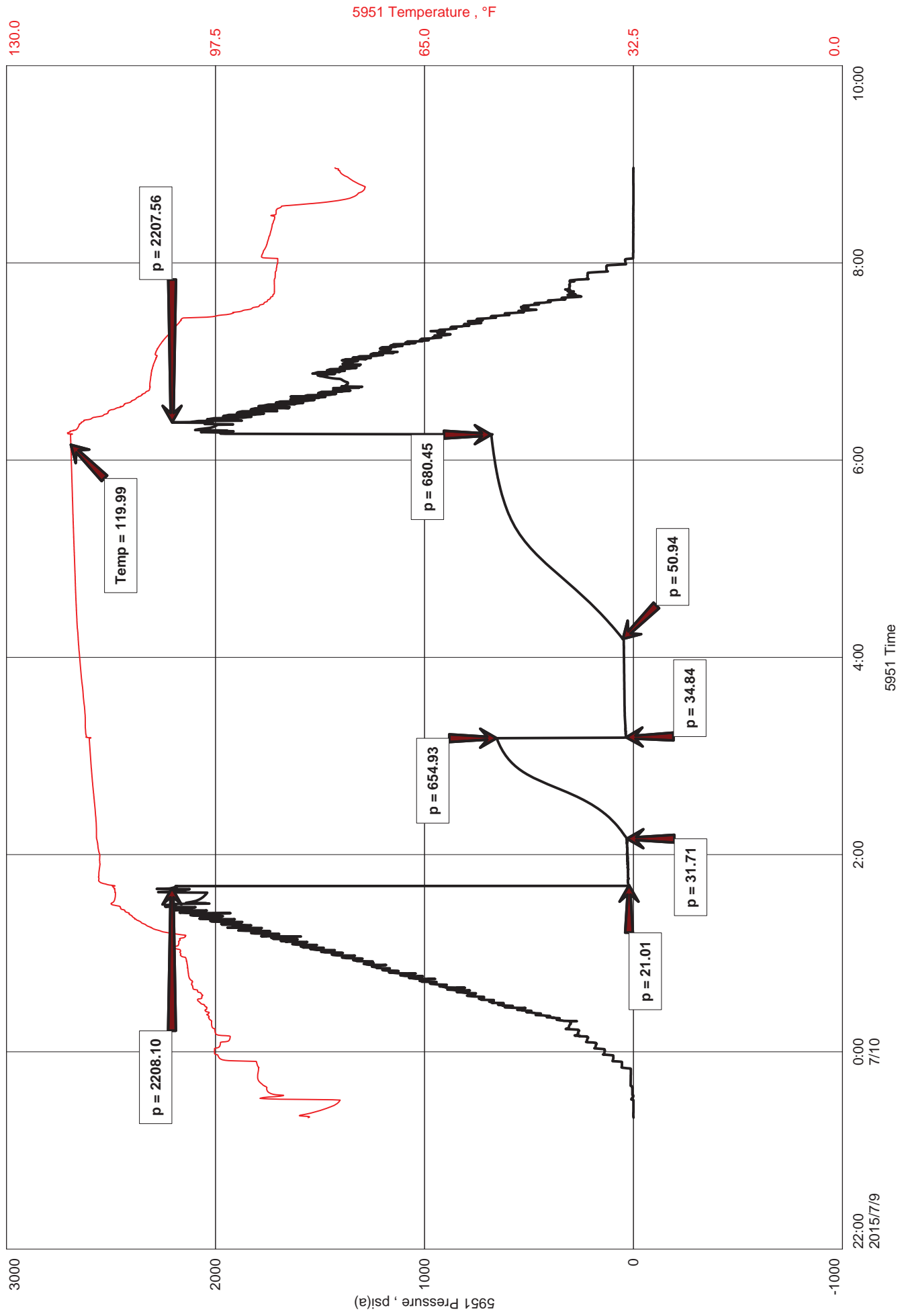
Price Job	
Other Charges	<u>J J JNT</u>
	<u>54PKr X2</u>
	<u>78 MRT (60)</u>
Total	

Time Set Packer(s) 01:43 A.M. P.M. Time Started Off Bottom 06:13 A.M. P.M. Maximum Temperature 120°F

Initial Hydrostatic Pressure..... (A) 2208 P.S.I.  
 Initial Flow Period..... Minutes 30 (B) 21 P.S.I. to (C) 32 P.S.I.  
 Initial Closed In Period..... Minutes 60 (D) 655 P.S.I.  
 Final Flow Period..... Minutes 60 (E) 35 P.S.I. to (F) 51 P.S.I.  
 Final Closed In Period..... Minutes 120 (G) 680 P.S.I. Thanks  
 Final Hydrostatic Pressure..... (H) 2207 P.S.I. [Signature]

Diamond Testing shall not be liable for damages of any kind to the property or personnel of the one for whom a test is made or for any loss suffered or sustained, directly or indirectly, through the use of its equipment, or its statement or opinion concerning the result of any test. Tools lost or damaged in the hole shall be paid for at cost by the party for whom the test is made.

# Powell #9-22





**DIAMOND TESTING**  
P.O. Box 157  
**HOISINGTON, KANSAS 67544**  
(800) 542-7313  
**DRILL-STEM TEST TICKET**  
FILE: POWELL9DST3

TIME ON: 23:20  
TIME OFF: 08:58

Company BEREXCO LLC Lease & Well No. POWELL #9-22  
Contractor BEREDCO LLC RIG #1 Charge to BEREXCO LLC  
Elevation 2954' KB Formation LANSING "I" Effective Pay \_\_\_\_\_ Ft. Ticket No. F394  
Date 7-10-15 Sec. 22 Twp. 29S S Range 33W W County HASKELL State KANSAS  
Test Approved By ED GRIEVES Diamond Representative JAKE FAHRENBRUCH

Formation Test No. 3 Interval Tested from 4497 ft. to 4511 ft. Total Depth 4511 ft.  
Packer Depth 4492 ft. Size 6 3/4 in. Packer depth ----- ft. Size 6 3/4 in.  
Packer Depth 4497 ft. Size 6 3/4 in. Packer depth ----- ft. Size 6 3/4 in.  
Depth of Selective Zone Set -----

Top Recorder Depth (Inside) 4480 ft. Recorder Number 5584 Cap. 5000 P.S.I.  
Bottom Recorder Depth (Outside) 4498 ft. Recorder Number 5951 Cap. 5000 P.S.I.  
Below Straddle Recorder Depth \_\_\_\_\_ ft. Recorder Number \_\_\_\_\_ Cap. \_\_\_\_\_ P.S.I.

Mud Type CHEMICAL Viscosity 46 (4# LCM) Drill Collar Length 616 ft. I.D. 2 1/4 in.  
Weight 9.1 Water Loss 8.8 cc. Weight Pipe Length 0 ft. I.D. 2 7/8 in.  
Chlorides 3,600 P.P.M. Drill Pipe Length 3,846 ft. I.D. 3 1/2 in.  
Jars: Make STERLING Serial Number #5 J,J,ShPkrX2 Test Tool Length 33 ft. Tool Size 3 1/2-IF in.  
Did Well Flow? NO Reversed Out NO Anchor Length 14 ft. Size 4 1/2-FH in.  
Main Hole Size 7 7/8 Tool Joint Size 4 1/2 XH in. Surface Choke Size 1 in. Bottom Choke Size 5/8 in.

Blow: 1st Open: Blow increased to 4.5". No blowback.  
2nd Open: Blow increased to 9". No blowback.

Recovered 40 ft. of SOCM 5% oil, 95% mud  
Recovered \_\_\_\_\_ ft. of 150' GAS IN PIPE  
Recovered \_\_\_\_\_ ft. of (tool sample: HOCM, 32% oil, 68% mud)

Recovered _____ ft. of _____	Price Job
Recovered _____ ft. of _____	Other Charges
Remarks: _____	Insurance
_____	Total

Time Set Packer(s) 01:43 A.M. P.M. Time Started Off Bottom 06:13 A.M. P.M. Maximum Temperature 120 F

Initial Hydrostatic Pressure..... (A) 2208 P.S.I.  
Initial Flow Period..... Minutes 30 (B) 21 P.S.I. to (C) 32 P.S.I.  
Initial Closed In Period..... Minutes 60 (D) 655 P.S.I.  
Final Flow Period..... Minutes 60 (E) 35 P.S.I. to (F) 51 P.S.I.  
Final Closed In Period..... Minutes 120 (G) 680 P.S.I.  
Final Hydrostatic Pressure..... (H) 2207 P.S.I.

Diamond Testing shall not be liable for damages of any kind to the property or personnel of the one for whom a test is made or for any loss suffered or sustained, directly or indirectly, through the use of its equipment, or its statement or opinion concerning the result of any test. Tools lost or damaged in the hole shall be paid for at cost by the party for whom the test is made.