

# DIAMOND TESTING GENERAL REPORT

**Jake Fahrenbruch, Tester**

Cell: (620) 282-8977 / Office: (800) 542-7313



## TEST INFORMATION

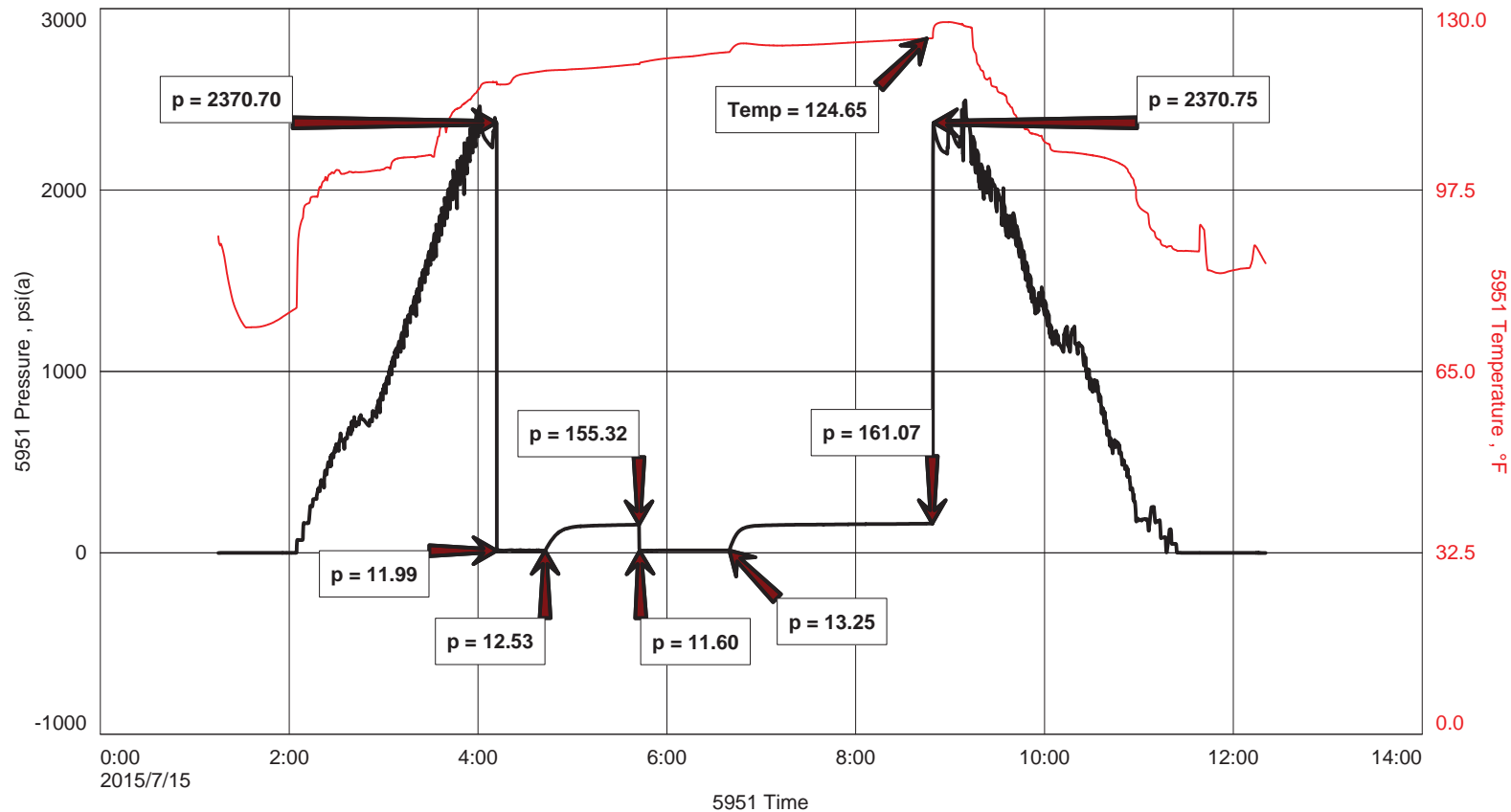
<b>Well Name</b>	Powell #9-22
<b>Company Name</b>	Berexco LLC
<b>Formation</b>	Pawnee 4878'-4890'
<b>Test Type</b>	Bottom-Hole w/J,Jnt,ShPkr X 2
<b>Surface Location</b>	Sec 22-29s-33w-Haskell Co.-KS
<b>KB Elevation (SL)</b>	2954.000
<b>Gauge Name</b>	5951
<b>Start Test Date</b>	2015/07/15
<b>Start Test Time</b>	01:15:00
<b>Final Test Date</b>	2015/07/15
<b>Final Test Time</b>	12:21:00
<b>Job Number</b>	F398
<b>Contact</b>	Evan Mayhew
<b>Site Contact</b>	Ed Grieves

## TEST RESULTS

Initial flow, weak blow, increased to 7" in bucket. No blowback.  
 Final flow, strong blow, increased to BOB in 15 minutes. No blowback.

Recovered 25' of SOSM, 1% oil, 99% mud  
 1,250' GAS IN PIPE

## Powell #9-22





**DIAMOND TESTING**  
 P.O. Box 157  
 HOISINGTON, KANSAS 67544  
 (800) 542-7313  
**DRILL-STEM TEST TICKET**  
 FILE: POWELL9DST7

ON LOCATION:	<u>00:30</u>
START RECORDERS:	<u>01:15</u>
STOP RECORDERS:	<u>12:21</u>

Company BEREXCO LLC Lease & Well No. POWELL #9-22  
 Contractor BEREXCO LLC RIG #1 Charge to BEREXCO LLC  
 Elevation 2954' NB Formation PAWNEE Effective Pay --- Ft. Ticket No. F398  
 Date 7-15-15 Sec. 22 Twp. 29S Range 33W County HASKELL State KANSAS  
 Test Approved By ED GRIEVES Diamond Representative JAKE FAHRENBRUCH

Formation Test No. 7 Interval Tested from 4878 ft. to 4890 ft. Total Depth 4890 ft.  
 Packer Depth 4873 ft. Size 6 3/4 in. Packer depth --- ft. Size 6 3/4 in.  
 Packer Depth 4878 ft. Size 6 3/4 in. Packer depth --- ft. Size 6 3/4 in.  
 Depth of Selective Zone Set ---

Top Recorder Depth (Inside) 4863 ft. Recorder Number 5951 Cap. 5000 P.S.I.  
 Bottom Recorder Depth (Outside) 4879 ft. Recorder Number 5584 Cap. 5000 P.S.I.  
 Below Straddle Recorder Depth --- ft. Recorder Number --- Cap. --- P.S.I.

Mud Type CHEMICAL Viscosity 57 (2" LCM) Drill Collar Length 616 ft. I.D. 2 1/4 in.  
 Weight 9.0 Water Loss 9.0 cc. Weight Pipe Length --- ft. I.D. 2 7/8 in.  
 Chlorides 4800 P.P.M. Drill Pipe Length 4229 ft. I.D. 3 1/2 in.

Jars: Make STERLING Serial Number #5 J, JNT, SHPRK X 2 Test Tool Length 33 ft. Tool Size 3 1/2-IF in.  
 Did Well Flow? NO Reversed Out NO Anchor Length 12 ft. Size 4 1/2-FH in.  
 Main Hole Size 7 7/8 Tool Joint Size 4 1/2" XH in. Surface Choke Size 1 in. Bottom Choke Size 5/8 in.

Blow: 1st Open: WEAK BLOW, INCREASED TO 7" NO BLOWBACK.  
 2nd Open: FAIR BLOW, INCREASED TO 80.13 IN 15 MINUTES. NO BLOWBACK.

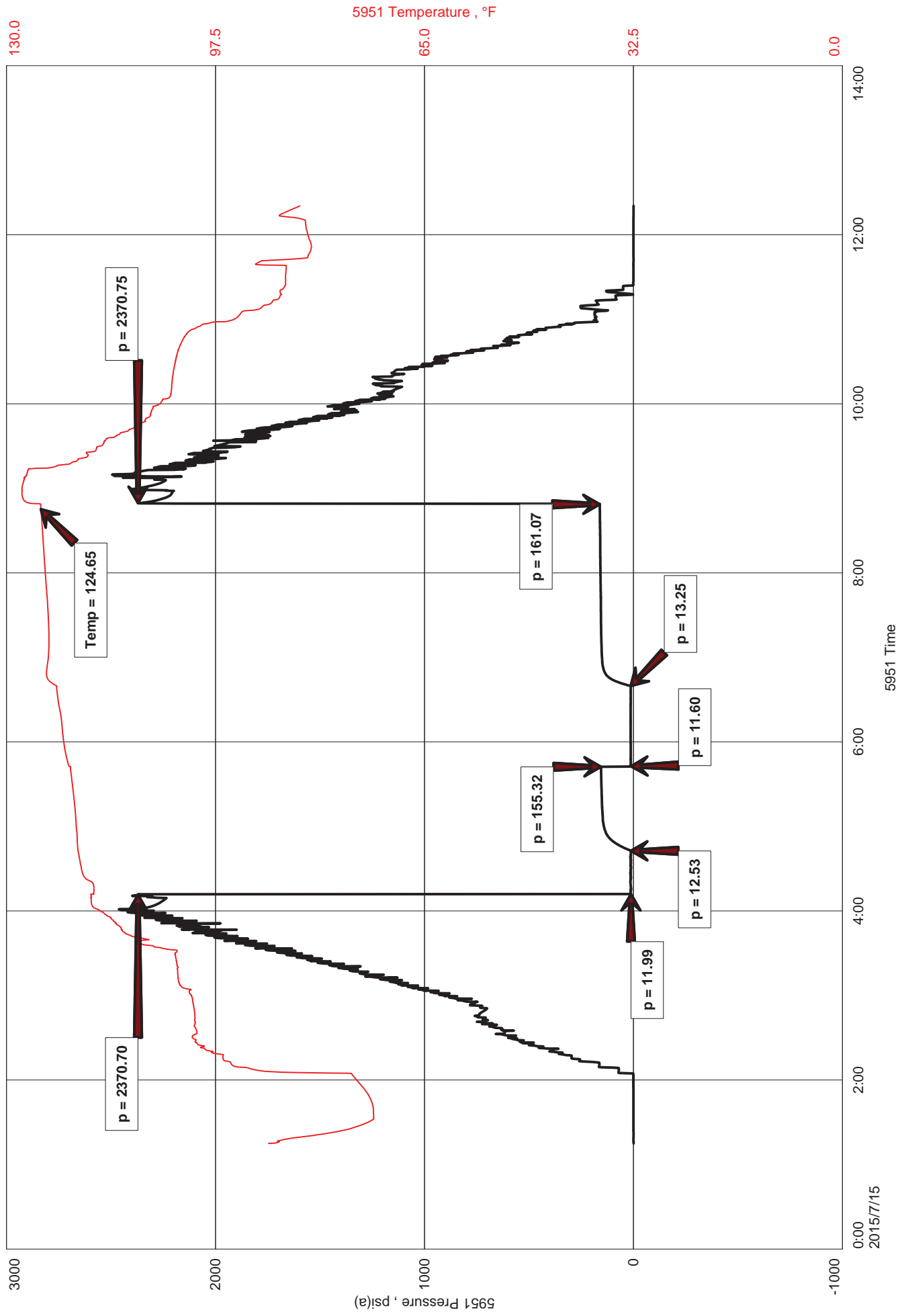
Recovered 25 ft. of SOSM 1" OIL, 99" MUD  
 Recovered --- ft. of 1250' GAS IN PIPE  
 Recovered --- ft. of ---  
 Recovered --- ft. of ---  
 Recovered --- ft. of ---  
 Recovered --- ft. of ---  
 Remarks: ---  
 Total (1 3/4 HR. STANDBY)  
 Price Job ---  
 Other Charges J, JNT  
SHPRK X 2  
78 MRT (GC)

Time Set Packer(s) 04:15 A.M. P.M. Time Started Off Bottom 08:45 A.M. P.M. Maximum Temperature 125° F

Initial Hydrostatic Pressure..... (A) 2371 P.S.I.  
 Initial Flow Period..... Minutes 30 (B) 12 P.S.I. to (C) 13 P.S.I.  
 Initial Closed In Period..... Minutes 60 (D) 155 P.S.I.  
 Final Flow Period..... Minutes 60 (E) 12 P.S.I. to (F) 13 P.S.I.  
 Final Closed In Period..... Minutes 120 (G) 161 P.S.I. Thanks!  
 Final Hydrostatic Pressure..... (H) 2371 P.S.I. Jake Fahrenbruch

Diamond Testing shall not be liable for damages of any kind to the property or personnel of the one for whom a test is made or for any loss suffered or sustained, directly or indirectly, through the use of its equipment, or its statement or opinion concerning the result of any test. Tools lost or damaged in the hole shall be paid for at cost by the party for whom the test is made.

# Powell #9-22





**DIAMOND TESTING**  
P.O. Box 157  
**HOISINGTON, KANSAS 67544**  
(800) 542-7313  
**DRILL-STEM TEST TICKET**  
FILE: POWELL9DST7

TIME ON: 01:15  
TIME OFF: 12:21

Company BEREXCO LLC Lease & Well No. POWELL #9-22  
Contractor BEREDCO LLC RIG #1 Charge to BEREXCO LLC  
Elevation 2954' KB Formation Pawnee Effective Pay \_\_\_\_\_ Ft. Ticket No. F398  
Date 7-15-15 Sec. 22 Twp. 29S S Range 33W W County HASKELL State KANSAS  
Test Approved By ED GRIEVES Diamond Representative JAKE FAHRENBRUCH

Formation Test No. 7 Interval Tested from 4878 ft. to 4890 ft. Total Depth 4890 ft.  
Packer Depth 4873 ft. Size 6 3/4 in. Packer depth ----- ft. Size 6 3/4 in.  
Packer Depth 4878 ft. Size 6 3/4 in. Packer depth ----- ft. Size 6 3/4 in.  
Depth of Selective Zone Set -----

Top Recorder Depth (Inside) 4863 ft. Recorder Number 5951 Cap. 5000 P.S.I.  
Bottom Recorder Depth (Outside) 4879 ft. Recorder Number 5584 Cap. 5000 P.S.I.  
Below Straddle Recorder Depth ----- ft. Recorder Number ----- Cap. ----- P.S.I.

Mud Type CHEMICAL Viscosity 57 (2# LCM) Drill Collar Length 616 ft. I.D. 2 1/4 in.  
Weight 9.0 Water Loss 9.6 cc. Weight Pipe Length 0 ft. I.D. 2 7/8 in.  
Chlorides 4,800 P.P.M. Drill Pipe Length 4,229 ft. I.D. 3 1/2 in.  
Jars: Make STERLING Serial Number #5 J,J,ShPkrX2 Test Tool Length 33 ft. Tool Size 3 1/2-IF in.  
Did Well Flow? NO Reversed Out NO Anchor Length 12 ft. Size 4 1/2-FH in.  
Main Hole Size 7 7/8 Tool Joint Size 4 1/2 XH in. Surface Choke Size 1 in. Bottom Choke Size 5/8 in.

Blow: 1st Open: Weak blow, increased to 7" in bucket. No blowback.  
2nd Open: Strong blow, increased to BOB in 15 minutes. No blowback.

Recovered 25 ft. of SOSM 1% oil, 99% mud  
Recovered \_\_\_\_\_ ft. of 1,250' GAS IN PIPE  
Recovered \_\_\_\_\_ ft. of \_\_\_\_\_  
Recovered \_\_\_\_\_ ft. of \_\_\_\_\_

Recovered _____ ft. of _____	Price Job
Recovered _____ ft. of _____	Other Charges
Remarks: _____	Insurance
_____	Total

Time Set Packer(s) 04:15 A.M. P.M. Time Started Off Bottom 08:45 A.M. P.M. Maximum Temperature 125 F

Initial Hydrostatic Pressure..... (A) 2371 P.S.I.  
Initial Flow Period..... Minutes 30 (B) 12 P.S.I. to (C) 13 P.S.I.  
Initial Closed In Period..... Minutes 60 (D) 155 P.S.I.  
Final Flow Period..... Minutes 60 (E) 12 P.S.I. to (F) 13 P.S.I.  
Final Closed In Period..... Minutes 120 (G) 161 P.S.I.  
Final Hydrostatic Pressure..... (H) 2371 P.S.I.

Diamond Testing shall not be liable for damages of any kind to the property or personnel of the one for whom a test is made or for any loss suffered or sustained, directly or indirectly, through the use of its equipment, or its statement or opinion concerning the result of any test. Tools lost or damaged in the hole shall be paid for at cost by the party for whom the test is made.