

DIAMOND TESTING GENERAL REPORT

Jake Fahrenbruch, Tester

Cell: (620) 282-8977 / Office: (800) 542-7313



TEST INFORMATION

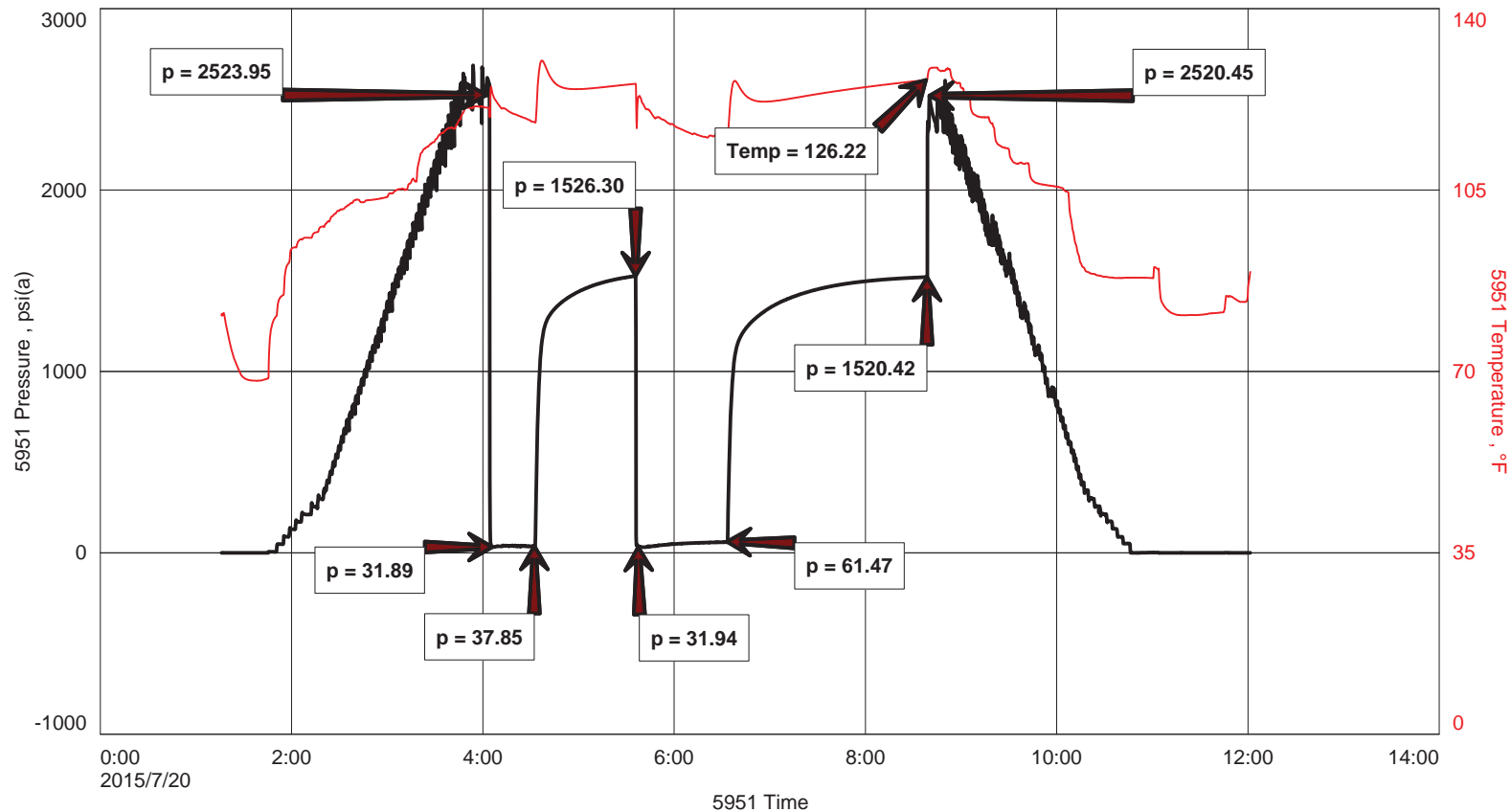
| | |
|--------------------------|-------------------------------|
| Well Name | Powell #9-22 |
| Company Name | Berexco LLC |
| Formation | DST #10, Morrow, 5305'-5330' |
| Test Type | Bottom-Hole w/J,Jnt,ShPkr X 2 |
| Surface Location | Sec 22-29s-33w-Haskell Co.-KS |
| KB Elevation (SL) | 2954.000 |
| Gauge Name | 5951 |
| Start Test Date | 2015/07/20 |
| Start Test Time | 01:16:00 |
| Final Test Date | 2015/07/20 |
| Final Test Time | 12:03:00 |
| Job Number | F401 |
| Contact | Evan Mayhew |
| Site Contact | Ed Grieves |

TEST RESULTS

Initial flow, strong blow, BOB 20 seconds, GTS 9 minutes. No blowback.
Final flow, strong blow, BOB 5 seconds, guage gas. No blowback.

Recovered 5' of GCM 10% gas, 90% mud

Powell #9-22





DIAMOND TESTING
 P.O. Box 157
 HOISINGTON, KANSAS 67544
 (800) 542-7313
DRILL-STEM TEST TICKET
 FILE: POWELL 9DST10

| | |
|------------------|--------------|
| ON LOCATION: | <u>01:15</u> |
| START RECORDERS: | <u>01:16</u> |
| STOP RECORDERS: | <u>12:03</u> |

Company BEREXCO LLC Lease & Well No. POWELL #9-22
 Contractor BEREXCO LLC REG #1 Charge to BEREXCO LLC
 Elevation 2954' KB Formation MORROW Effective Pay _____ Ft. Ticket No. F401
 Date 7-20-15 Sec. 22 Twp. 29S Range 33W County HASKELL State KANSAS
 Test Approved By ED GRIEVES Diamond Representative JAKE FAHRENBRUCH

Formation Test No. 10 Interval Tested from 5305 ft. to 5330 ft. Total Depth 5330 ft.
 Packer Depth 5300 ft. Size 6 3/4 in. Packer depth _____ ft. Size 6 3/4 in.
 Packer Depth 5305 ft. Size 6 3/4 in. Packer depth _____ ft. Size 6 3/4 in.
 Depth of Selective Zone Set _____

Top Recorder Depth (Inside) 5288 ft. Recorder Number 5957 Cap. 5000 P.S.I.
 Bottom Recorder Depth (Outside) 5306 ft. Recorder Number 5584 Cap. 5000 P.S.I.
 Below Straddle Recorder Depth _____ ft. Recorder Number _____ Cap. _____ P.S.I.

Mud Type CHEMICAL Viscosity 56 (6" UCM) Drill Collar Length 616 ft. I.D. 2 1/4 in.
 Weight 9.0 Water Loss 9.2 cc. Weight Pipe Length _____ ft. I.D. 2 7/8 in.
 Chlorides 6500 P.P.M. Drill Pipe Length 4656 ft. I.D. 3 1/2 in.
 Jars: Make STERLING Serial Number JJ, SHPKX2 Test Tool Length 33 ft. Tool Size 3 1/2-IF in.
 Did Well Flow? GTS Reversed Out _____ Anchor Length 25 ft. Size 4 1/2-FH in.
 Main Hole Size 7 7/8 Tool Joint Size 4 1/2" XH in. Surface Choke Size 1 in. Bottom Choke Size 5/8 in.

Blow: 1st Open: STRONG BLOW, BOB 20 SEC, GTS 9 MIN, NO BB
 2nd Open: STRONG BLOW, BOB 6 SEC, GUAGE GAS.

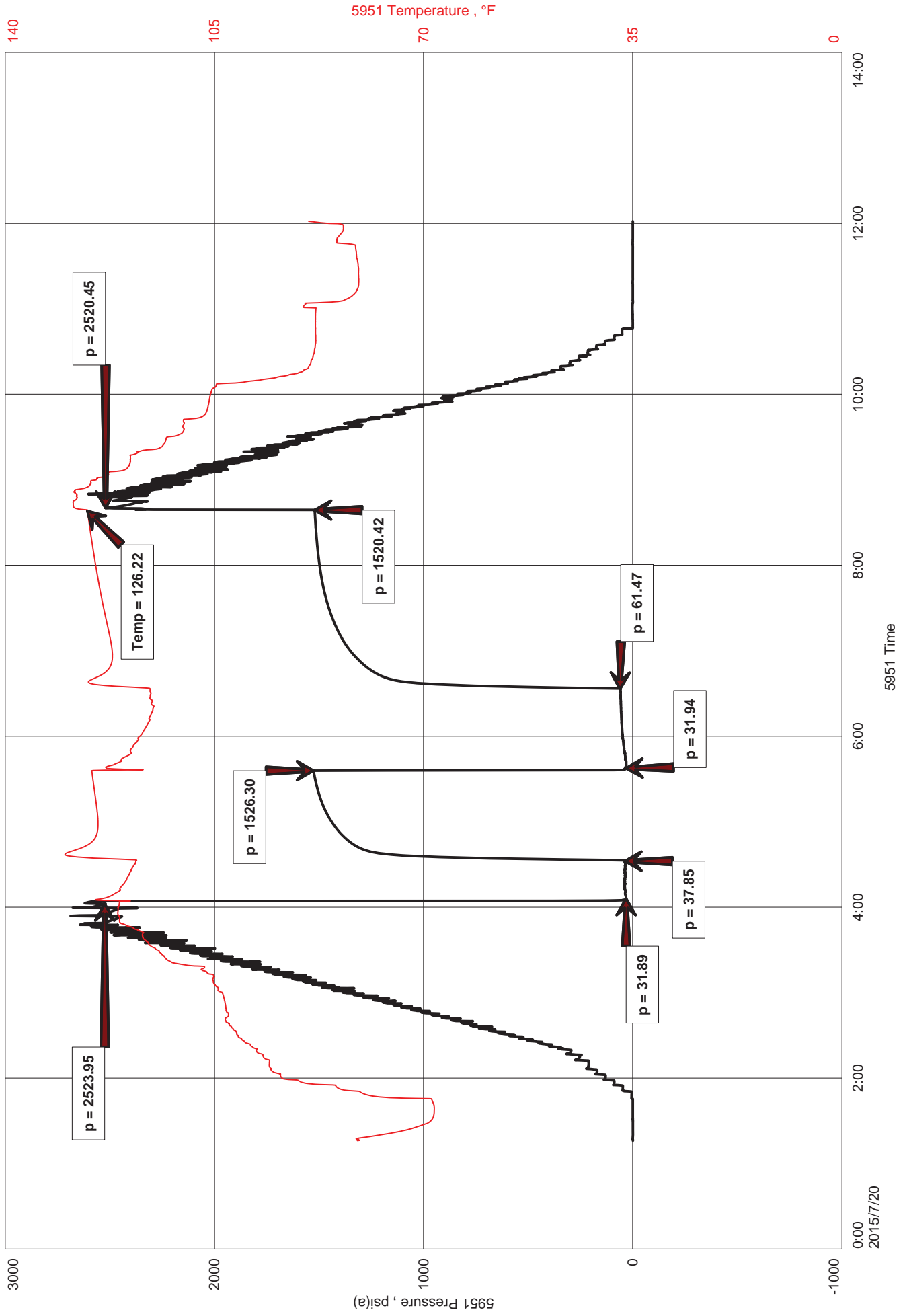
Recovered 5 ft. of GCM 10" GAS, 90" MUD
 Recovered _____ ft. of _____
 Recovered _____ ft. of _____
 Recovered _____ ft. of _____

| | |
|------------------------------|-------------------------|
| Recovered _____ ft. of _____ | Price Job |
| Recovered _____ ft. of _____ | Other Charges <u>JJ</u> |
| Remarks: _____ | <u>SHPKX2</u> |
| | <u>78 MRT (GC)</u> |
| | Total |

Time Set Packer(s) 04:07 A.M. P.M. Time Started Off Bottom 08:37 A.M. P.M. Maximum Temperature 126 F
 Initial Hydrostatic Pressure..... (A) 2524 P.S.I.
 Initial Flow Period..... Minutes 30 (B) 32 P.S.I. to (C) 38 P.S.I.
 Initial Closed In Period..... Minutes 60 (D) 1526 P.S.I.
 Final Flow Period..... Minutes 60 (E) 32 P.S.I. to (F) 61 P.S.I.
 Final Closed In Period..... Minutes 120 (G) 1520 P.S.I. Thanks!
 Final Hydrostatic Pressure..... (H) 2520 P.S.I. per [signature]

Diamond Testing shall not be liable for damages of any kind to the property or personnel of the one for whom a test is made or for any loss suffered or sustained, directly or indirectly, through the use of its equipment, or its statement or opinion concerning the result of any test. Tools lost or damaged in the hole shall be paid for at cost by the party for whom the test is made.

Powell #9-22





DIAMOND TESTING
P.O. Box 157
HOISINGTON, KANSAS 67544
(800) 542-7313
DRILL-STEM TEST TICKET
FILE: POWELL9DST10

TIME ON: 01:16
TIME OFF: 12:03

Company BEREXCO LLC Lease & Well No. POWELL #9-22
Contractor BEREDCO LLC RIG #1 Charge to BEREXCO LLC
Elevation 2954' KB Formation Morrow Effective Pay _____ Ft. Ticket No. F401
Date 7-20-15 Sec. 22 Twp. 29S S Range 33W W County HASKELL State KANSAS
Test Approved By ED GRIEVES Diamond Representative JAKE FAHRENBRUCH

Formation Test No. 10 Interval Tested from 5305 ft. to 5330 ft. Total Depth 5330 ft.
Packer Depth 5300 ft. Size 6 3/4 in. Packer depth ----- ft. Size 6 3/4 in.
Packer Depth 5305 ft. Size 6 3/4 in. Packer depth ----- ft. Size 6 3/4 in.
Depth of Selective Zone Set -----

Top Recorder Depth (Inside) 5288 ft. Recorder Number 5951 Cap. 5000 P.S.I.
Bottom Recorder Depth (Outside) 5306 ft. Recorder Number 5584 Cap. 5000 P.S.I.
Below Straddle Recorder Depth ----- ft. Recorder Number ----- Cap. ----- P.S.I.

Mud Type CHEMICAL Viscosity 56 (6# LCM) Drill Collar Length 616 ft. I.D. 2 1/4 in.
Weight 9.0 Water Loss 9.2 cc. Weight Pipe Length 0 ft. I.D. 2 7/8 in.
Chlorides 6,500 P.P.M. Drill Pipe Length 4,656 ft. I.D. 3 1/2 in.
Jars: Make STERLING Serial Number #5 J,J,ShPkrX2 Test Tool Length 33 ft. Tool Size 3 1/2-IF in.
Did Well Flow? GTS Reversed Out NO Anchor Length 25 ft. Size 4 1/2-FH in.
Main Hole Size 7 7/8 Tool Joint Size 4 1/2 XH in. Surface Choke Size 1 in. Bottom Choke Size 5/8 in.

Blow: 1st Open: Strong blow @ BOB in 20 seconds. GTS in 9 minutes. No blowback.
2nd Open: Strong blow @ BOB in 5 seconds. Guage gas. No blowback.

| | |
|--------------------------------------|-------------------------|
| Recovered <u>5</u> ft. of <u>GCM</u> | <u>10% gas, 90% mud</u> |
| Recovered _____ ft. of _____ | |
| Recovered _____ ft. of _____ | |
| Recovered _____ ft. of _____ | |
| Recovered _____ ft. of _____ | |
| Recovered _____ ft. of _____ | Price Job |
| Remarks: _____ | Other Charges |
| | Insurance |
| | Total |

Time Set Packer(s) 04:07 A.M. P.M. Time Started Off Bottom 08:37 A.M. P.M. Maximum Temperature 126 F

Initial Hydrostatic Pressure..... (A) 2524 P.S.I.
Initial Flow Period..... Minutes 30 (B) 32 P.S.I. to (C) 38 P.S.I.
Initial Closed In Period..... Minutes 60 (D) 1526 P.S.I.
Final Flow Period..... Minutes 60 (E) 32 P.S.I. to (F) 61 P.S.I.
Final Closed In Period..... Minutes 120 (G) 1520 P.S.I.
Final Hydrostatic Pressure..... (H) 2520 P.S.I.

Diamond Testing shall not be liable for damages of any kind to the property or personnel of the one for whom a test is made or for any loss suffered or sustained, directly or indirectly, through the use of its equipment, or its statement or opinion concerning the result of any test. Tools lost or damaged in the hole shall be paid for at cost by the party for whom the test is made.

DIAMOND TESTING



GAS RATE TICKET

Lease: Powell #9-22
Operator: Berexco LLC
Formation: Morrow 5305'-5330'
Field:
Location: Sec. 22 Twp. 29s Rge. 33w
County: Haskell **State:** Kansas

INITIAL FLOW: Strong blow, BOB in 20 seconds.
GTS in 9 minutes. No blowback.

FINAL FLOW: Strong blow, BOB 5 seconds.
Guage gas. No blowback.

INITIAL FLOW:

10 min ----- .5" choke ----- 8 psi ----- 101,000 cf/day
20 min ----- .5" choke ----- 7 psi ----- 94,500 cf/day
30 min ----- .5" choke ----- 7 psi ----- 94,500 cf/day

FINAL FLOW:

10 min ----- .25" choke ----- 28 psi ----- 59,000 cf/day
20 min ----- .25" choke ----- 36 psi ----- 70,300 cf/day ***** GAS SAMPLE TAKEN*****
30 min ----- .25" choke ----- 44 psi ----- 81,200 cf/day
40 min ----- .25" choke ----- 49 psi ----- 88,300 cf/day
50 min ----- .25" choke ----- 50 psi ----- 89,700 cf/day
60 min ----- .25" choke ----- 51 psi ----- 91,100 cf/day