



**TRILOBITE  
TESTING, INC.**

# DRILL STEM TEST REPORT

Berexco LLC  
2020 N Bramblewood  
Wichita KS 67202  
ATTN: Bryan Bynog

**19 1S 37W Rawlins KS**  
**Owens 3-19**  
Job Ticket: 65073      **DST#: 1**  
Test Start: 2015.07.14 @ 13:50:00

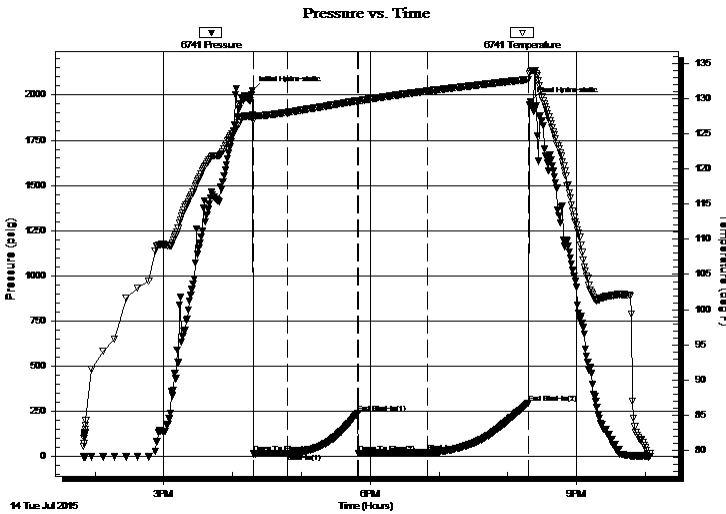
## GENERAL INFORMATION:

Formation: **Oread**  
Deviated: No Whipstock: ft (KB)  
Time Tool Opened: 16:18:00  
Time Test Ended: 22:04:00  
Interval: **4025.00 ft (KB) To 4085.00 ft (KB) (TVD)**  
Total Depth: 4085.00 ft (KB) (TVD)  
Hole Diameter: 7.88 inches Hole Condition: Fair  
Reference Elevations: 3196.00 ft (KB)  
3185.00 ft (CF)  
KB to GR/CF: 11.00 ft  
Test Type: Conventional Bottom Hole (Initial)  
Tester: Robert Zodrow  
Unit No: 66

**Serial #: 6741      Inside**  
Press @ Run Depth: 19.51 psig @ 4026.00 ft (KB)      Capacity: 8000.00 psig  
Start Date: 2015.07.14      End Date: 2015.07.14      Last Calib.: 2015.07.14  
Start Time: 13:50:05      End Time: 22:03:59      Time On Btm: 2015.07.14 @ 16:17:30  
Time Off Btm: 2015.07.14 @ 20:19:30

**TEST COMMENT:** 30-IF- Surface blow died in 6 mins  
60-ISI- No return  
60-FF- No blow  
90-FSI- No return

## PRESSURE SUMMARY



Time (Min.)	Pressure (psig)	Temp (deg F)	Annotation
0	2023.30	127.64	Initial Hydro-static
1	13.91	126.87	Open To Flow (1)
31	14.94	128.06	Shut-In(1)
92	237.57	129.71	End Shut-In(1)
92	15.40	129.64	Open To Flow (2)
152	19.51	131.07	Shut-In(2)
240	293.57	132.74	End Shut-In(2)
242	1961.33	133.90	Final Hydro-static

## Recovery

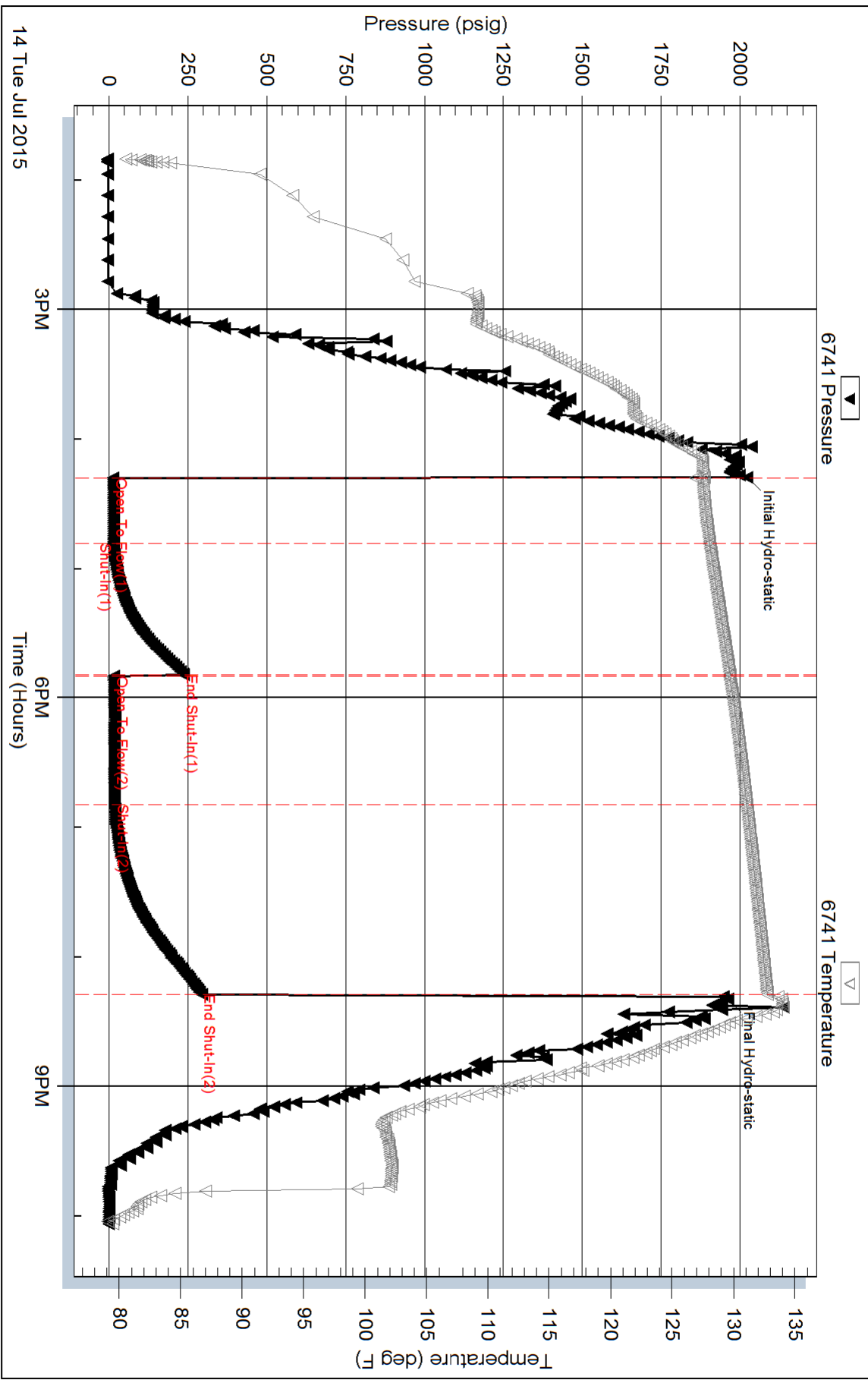
Length (ft)	Description	Volume (bbl)
2.00	MUD 100%M	0.01

## Gas Rates

Choke (inches)	Pressure (psig)	Gas Rate (Mcf/d)



# Pressure vs. Time



Serial #: 8521

Outside Berexco LLC

Owens 3-19

DST Test Number: 1

