



**TRILOBITE
TESTING, INC.**

DRILL STEM TEST REPORT

Berexco LLC
2020 N Bramblewood
Wichita KS 67202
ATTN: Bryan Bynog

19 1S 37W Cheyenne KS
Owens 3-19
Job Ticket: 62801 **DST#: 4**
Test Start: 2015.07.17 @ 11:55:00

GENERAL INFORMATION:

Formation: **LKC "E"**
Deviated: No Whipstock: ft (KB)
Time Tool Opened: 14:32:00
Time Test Ended: 20:24:00
Interval: **4312.00 ft (KB) To 4375.00 ft (KB) (TVD)**
Total Depth: 4375.00 ft (KB) (TVD)
Hole Diameter: 7.88 inches Hole Condition: Fair
Reference Elevations: 3196.00 ft (KB)
3185.00 ft (CF)
KB to GR/CF: 11.00 ft
Test Type: Conventional Bottom Hole (Reset)
Tester: Robert Zodrow
Unit No: 66

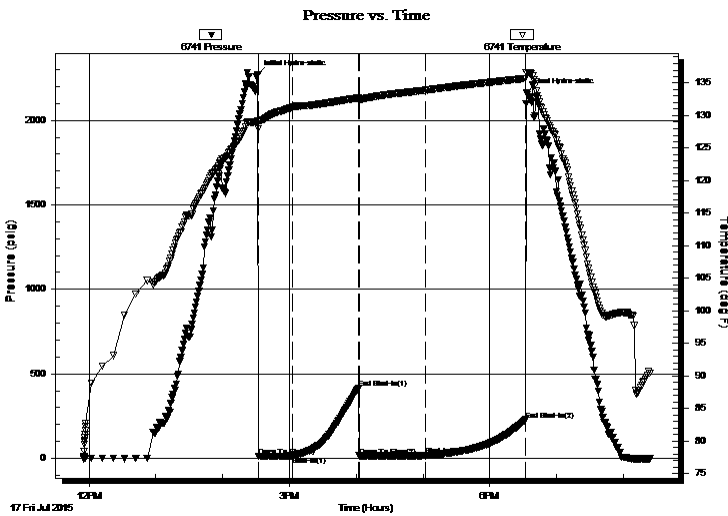
Serial #: 6741

Inside

Press@RunDepth: 15.51 psig @ 4313.00 ft (KB) Capacity: 8000.00 psig
Start Date: 2015.07.17 End Date: 2015.07.17 Last Calib.: 2015.07.17
Start Time: 11:55:05 End Time: 20:23:59 Time On Btm: 2015.07.17 @ 14:31:30
Time Off Btm: 2015.07.17 @ 18:33:00

TEST COMMENT: 30-IF- Surface blow died in 11 mins
60-ISI- No return
60-FF- No blow
90-FSI- No return

PRESSURE SUMMARY



Time (Min.)	Pressure (psig)	Temp (deg F)	Annotation
0	2270.73	129.16	Initial Hydro-static
1	11.06	128.01	Open To Flow (1)
31	13.85	131.32	Shut-In(1)
91	414.99	132.73	End Shut-In(1)
91	14.06	132.56	Open To Flow (2)
151	15.51	133.90	Shut-In(2)
241	228.36	135.71	End Shut-In(2)
242	2163.42	136.64	Final Hydro-static

Recovery

Length (ft)	Description	Volume (bbl)
2.00	Mud 100%M	0.01

* Recovery from multiple tests

Gas Rates

Choke (inches)	Pressure (psig)	Gas Rate (Mcf/d)



**TRILOBITE
TESTING, INC.**

DRILL STEM TEST REPORT

FLUID SUMMARY

Berexco LLC

19 1S 37W Cheyenne KS

2020 N Bramblewood
Wichita KS 67202

Owens 3-19

Job Ticket: 62801

DST#: 4

ATTN: Bryan Bynog

Test Start: 2015.07.17 @ 11:55:00

Mud and Cushion Information

Mud Type: Gel Chem

Cushion Type:

Oil API:

deg API

Mud Weight: 9.00 lb/gal

Cushion Length:

ft

Water Salinity:

ppm

Viscosity: 64.00 sec/qt

Cushion Volume:

bbbl

Water Loss: 7.20 in³

Gas Cushion Type:

Resistivity: 0.00 ohm.m

Gas Cushion Pressure:

psig

Salinity: 1000.00 ppm

Filter Cake: 2.00 inches

Recovery Information

Recovery Table

Length ft	Description	Volume bbl
2.00	Mud 100%M	0.010

Total Length: 2.00 ft Total Volume: 0.010 bbl

Num Fluid Samples: 0

Num Gas Bombs: 0

Serial #:

Laboratory Name:

Laboratory Location:

Recovery Comments:

Pressure vs. Time

