



**TRILOBITE TESTING, INC.**

# DRILL STEM TEST REPORT

Vincent Oil Corporation  
 155 N Market STE 700  
 Wichita, Ks. 67202  
 ATTN: Tom Dudgeon

**34-28s-23w Ford, Co. Ks.**

**Keough #4-34**

Job Ticket: 57823

**DST#: 1**

Test Start: 2015.06.09 @ 00:46:08

## GENERAL INFORMATION:

Formation: **Pawnee**

Deviated: No Whipstock: 0.00 ft (KB)

Time Tool Opened: 03:36:38

Time Test Ended: 10:56:23

Test Type: Conventional Bottom Hole (Initial)

Tester: Matt Smith

Unit No: 53

**Interval: 5022.00 ft (KB) To 5055.00 ft (KB) (TVD)**

Reference Elevations: 2535.00 ft (KB)

Total Depth: 5055.00 ft (KB) (TVD)

2522.00 ft (CF)

Hole Diameter: 7.88 inches Hole Condition: Fair

KB to GR/CF: 13.00 ft

**Serial #: 8931 Inside**

Press@RunDepth: 116.02 psig @ 5023.00 ft (KB)

Capacity: 8000.00 psig

Start Date: 2015.06.09

End Date:

2015.06.09

Last Calib.:

2015.06.09

Start Time: 00:46:13

End Time:

10:56:23

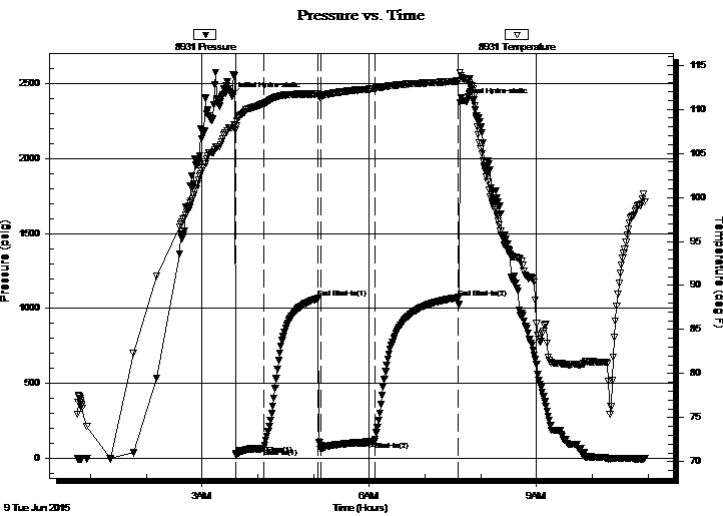
Time On Btm:

2015.06.09 @ 03:32:23

Time Off Btm:

2015.06.09 @ 07:37:23

**TEST COMMENT:** IF: Strong blow . B.O.B. in 8 mins.  
 IS: No blow .  
 FF: Strong blow . B.O.B. in 30 secs.  
 FS: Weak - Fair blow . Surf., - 4". Surf., blow back in 16 mins. G.T.S. in 45 mins.



## PRESSURE SUMMARY

Time (Min.)	Pressure (psig)	Temp (deg F)	Annotation
0	2415.11	107.92	Initial Hydro-static
5	29.38	108.18	Open To Flow (1)
34	65.34	110.65	Shut-In(1)
93	1067.48	111.75	End Shut-In(1)
96	59.26	111.29	Open To Flow (2)
154	116.02	112.37	Shut-In(2)
244	1072.07	113.21	End Shut-In(2)
245	2372.61	114.20	Final Hydro-static

## Recovery

Length (ft)	Description	Volume (bbl)
60.00	MOCWG 10%m 15%oc 25%w 50%g	0.30
60.00	MWOG 5%m 10%w 35%o 50%g	0.30
60.00	MWOG 4%m 6%w 3%o 60%g	0.33
64.00	MWOG 4%m 6%w 37%oc 53%g	0.90
40.00	GMCO 15%g 15%m 70%oc	0.56
0.00	G.I.P. G.T.S. 100%g	0.00

## Gas Rates

	Choke (inches)	Pressure (psig)	Gas Rate (Mcf/d)



**TRILOBITE  
TESTING, INC**

# DRILL STEM TEST REPORT

**FLUID SUMMARY**

Vincent Oil Corporation

**34-28s-23w Ford, Co. Ks.**

155 N Market STE 700  
Wichita, Ks. 67202

**Keough #4-34**

Job Ticket: 57823

**DST#: 1**

ATTN: Tom Dudgeon

Test Start: 2015.06.09 @ 00:46:08

## Mud and Cushion Information

Mud Type: Gel Chem

Cushion Type:

Oil API:

deg API

Mud Weight: 9.00 lb/gal

Cushion Length:

ft

Water Salinity:

48000 ppm

Viscosity: 54.00 sec/qt

Cushion Volume:

bbbl

Water Loss: 11.19 in<sup>3</sup>

Gas Cushion Type:

Resistivity: 4700.00 ohm.m

Gas Cushion Pressure:

psig

Salinity: ppm

Filter Cake: 0.20 inches

## Recovery Information

Recovery Table

Length ft	Description	Volume bbbl
60.00	MOCWG 10%m 15%oc 25%w 50%g	0.295
60.00	MVOG 5%m 10%w 35%o 50%g	0.295
60.00	MVOG 4%m 6%w 3%o 60%g	0.332
64.00	MVOCG 4%m 6%w 37%oc 53%g	0.898
40.00	GMCO 15%g 15%m 70%oc	0.561
0.00	G.I.P. G.T.S. 100%g	0.000

Total Length: 284.00 ft Total Volume: 2.381 bbl

Num Fluid Samples: 1

Num Gas Bombs: 1

Serial #: MAS Pratt

Laboratory Name: Caraway

Laboratory Location: Liberal, KS

Recovery Comments: RW is 85 degrees @ .13 = 48,000 chlorides.

Serial #: 8931

Inside

Vincent Oil Corporation

Keough #4-34

DST Test Number: 1

