



**TRILOBITE
TESTING, INC**

DRILL STEM TEST REPORT

Vincent Oil Corporation

34-28s-23w Ford, Co. Ks.

155 N Market STE 700
Wichita, Ks. 67202

Keough #4-34

Job Ticket: 57825

DST#: 3

ATTN: Tom Dudgeon

Test Start: 2015.06.11 @ 01:25:15

GENERAL INFORMATION:

Formation: **Mississippi**

Deviated: No Whipstock: 0.00 ft (KB)

Time Tool Opened: 03:31:15

Time Test Ended: 10:52:45

Test Type: Conventional Bottom Hole (Reset)

Tester: Matt Smith

Unit No: 53

Interval: 5205.00 ft (KB) To 5230.00 ft (KB) (TVD)

Reference Elevations: 2535.00 ft (KB)

Total Depth: 5230.00 ft (KB) (TVD)

2522.00 ft (CF)

Hole Diameter: 7.88 inches Hole Condition: Fair

KB to GR/CF: 13.00 ft

Serial #: 8931

Inside

Press@RunDepth: 229.39 psig @ 5206.00 ft (KB)

Capacity: 8000.00 psig

Start Date: 2015.06.11

End Date:

2015.06.11

Last Calib.:

2015.06.11

Start Time: 01:25:20

End Time:

10:52:45

Time On Btm:

2015.06.11 @ 03:28:30

Time Off Btm:

2015.06.11 @ 08:02:15

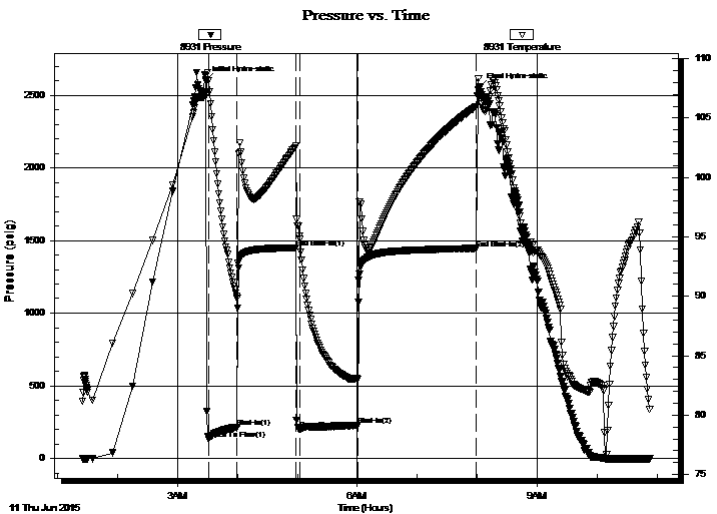
TEST COMMENT: IF: Strong blow . B.O.B., in 30 secs. G.T.S., in 5 mins. Gauged gas, see gas report.

IS: No blow . 20 mins to bleed dead.

FF: Strong blow . B.O.B. & G.T.S., immediate. Gauged gas, see gas report.

FS: Weak blow . Surf., - 2 1/2". Started after 50 mins.

PRESSURE SUMMARY



Time (Min.)	Pressure (psig)	Temp (deg F)	Annotation
0	2597.77	107.14	Initial Hydro-static
3	132.65	108.18	Open To Flow (1)
32	214.86	89.84	Shut-In(1)
91	1450.25	102.69	End Shut-In(1)
94	200.30	95.09	Open To Flow (2)
152	229.39	83.05	Shut-In(2)
271	1445.08	105.99	End Shut-In(2)
274	2549.77	107.68	Final Hydro-static

Recovery

Length (ft)	Description	Volume (bbl)
60.00	WMGCO 3%w 17%m 38%g 42%oc	0.30
60.00	GOCM 15%g 35%m 50%oc	0.30
60.00	GOCM 10%g 40%oc 50%m	0.33
0.00	G.I.P. G.T.S. 100%g	0.00

* Recovery from multiple tests

Gas Rates

	Choke (inches)	Pressure (psig)	Gas Rate (Mcf/d)
First Gas Rate	0.75	35.00	771.62
Last Gas Rate	0.75	58.50	1138.69
Max. Gas Rate	0.75	58.50	1138.69



**TRILOBITE
TESTING, INC**

DRILL STEM TEST REPORT

FLUID SUMMARY

Vincent Oil Corporation

34-28s-23w Ford, Co. Ks.

155 N Market STE 700
Wichita, Ks. 67202

Keough #4-34

Job Ticket: 57825

DST#: 3

ATTN: Tom Dudgeon

Test Start: 2015.06.11 @ 01:25:15

Mud and Cushion Information

Mud Type: Gel Chem

Cushion Type:

Oil API:

deg API

Mud Weight: 9.00 lb/gal

Cushion Length:

ft

Water Salinity:

9400 ppm

Viscosity: 49.00 sec/qt

Cushion Volume:

bbbl

Water Loss: 12.38 in³

Gas Cushion Type:

Resistivity: 9400.00 ohm.m

Gas Cushion Pressure:

psig

Salinity: ppm

Filter Cake: 0.20 inches

Recovery Information

Recovery Table

Length ft	Description	Volume bbbl
60.00	WMGCO 3%w 17%m 38%g 42%oc	0.295
60.00	GOCM 15%g 35%m 50%oc	0.295
60.00	GOCM 10%g 40%oc 50%m	0.332
0.00	G.I.P. G.T.S. 100%g	0.000

Total Length: 180.00 ft Total Volume: 0.922 bbl

Num Fluid Samples: 1

Num Gas Bombs: 2

Serial #: MAS Pratt

Laboratory Name: Caraway

Laboratory Location: Liberal, KS

Recovery Comments: Vincent requested circ. sub 5 stds up.

Pressure vs. Time

