



TRILOBITE TESTING, INC

DRILL STEM TEST REPORT

Culbreath Oil & Gas

21-14S-34W Logan KS

3501 S. Yale Ave
Tulsa OK 74135

Baker #1-21

Job Ticket: 62778

DST#: 2

ATTN: Steve Murphy

Test Start: 2015.09.16 @ 19:48:00

GENERAL INFORMATION:

Formation: **Marmaton**

Deviated: No Whipstock: ft (KB)

Time Tool Opened: 21:48:20

Time Test Ended: 01:26:09

Test Type: Conventional Bottom Hole (Reset)

Tester: Ryan Nichols

Unit No: 78

Interval: 4374.00 ft (KB) To 4384.00 ft (KB) (TVD)

Reference Elevations: 3109.00 ft (KB)

Total Depth: 4384.00 ft (KB) (TVD)

3102.00 ft (CF)

Hole Diameter: 7.88 inches Hole Condition: Good

KB to GR/CF: 7.00 ft

Serial #: 6752

Inside

Press@RunDepth: 20.78 psig @ 4375.00 ft (KB)

Capacity: 8000.00 psig

Start Date: 2015.09.16

End Date:

2015.09.17

Last Calib.:

2015.09.17

Start Time: 19:48:01

End Time:

01:26:10

Time On Btm:

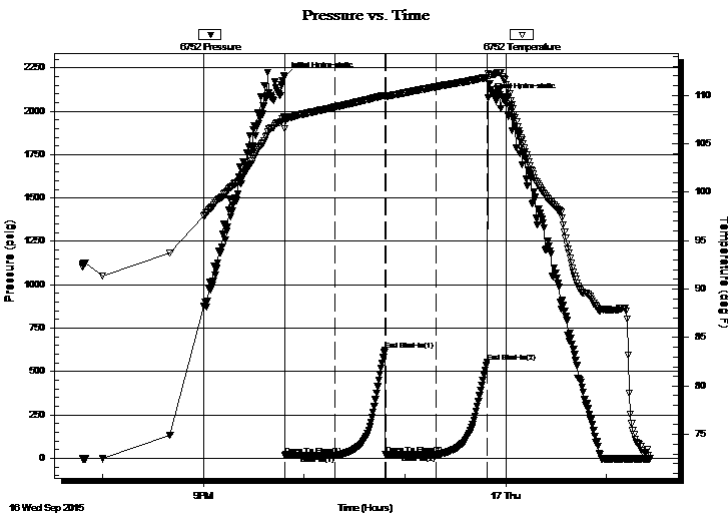
2015.09.16 @ 21:48:10

Time Off Btm:

2015.09.16 @ 23:49:40

TEST COMMENT: 30 IF - Surface blow
30 ISI - No return
30 FF - No blow
30 FSI - No return

PRESSURE SUMMARY



Time (Min.)	Pressure (psig)	Temp (deg F)	Annotation
0	2198.45	107.73	Initial Hydro-static
1	19.10	106.55	Open To Flow (1)
30	18.15	108.78	Shut-In(1)
60	624.17	110.00	End Shut-In(1)
61	20.53	109.86	Open To Flow (2)
91	20.78	110.88	Shut-In(2)
121	552.38	111.85	End Shut-In(2)
122	2079.80	112.26	Final Hydro-static

Recovery

Length (ft)	Description	Volume (bbl)
20.00	OCM - 10%o - 90%M	0.28

* Recovery from multiple tests

Gas Rates

Choke (inches)	Pressure (psig)	Gas Rate (Mcf/d)



**TRILOBITE
TESTING, INC**

DRILL STEM TEST REPORT

FLUID SUMMARY

Culbreath Oil & Gas

21-14S-34W Logan KS

3501 S. Yale Ave
Tulsa OK 74135

Baker #1-21

Job Ticket: 62778

DST#: 2

ATTN: Steve Murphy

Test Start: 2015.09.16 @ 19:48:00

Mud and Cushion Information

Mud Type: Gel Chem

Cushion Type:

Oil API:

deg API

Mud Weight: 9.00 lb/gal

Cushion Length:

ft

Water Salinity:

ppm

Viscosity: 49.00 sec/qt

Cushion Volume:

bbbl

Water Loss: 7.99 in³

Gas Cushion Type:

Resistivity: ohm.m

Gas Cushion Pressure:

psig

Salinity: 9000.00 ppm

Filter Cake: 1.00 inches

Recovery Information

Recovery Table

Length ft	Description	Volume bbl
20.00	OCM - 10%o - 90%M	0.281

Total Length: 20.00 ft Total Volume: 0.281 bbl

Num Fluid Samples: 0

Num Gas Bombs: 0

Serial #:

Laboratory Name:

Laboratory Location:

Recovery Comments:

