



**TRILOBITE TESTING, INC.**

# DRILL STEM TEST REPORT

Bickle Energies, LLC  
 2052 250th Ave  
 Hays, KS 67601  
 ATTN: Eli Felts

**35-5S-37W Cheyenne, KS**

**Beaver Creek #35-1**

Job Ticket: 65224      **DST#: 3**  
 Test Start: 2015.09.13 @ 23:32:00

## GENERAL INFORMATION:

Formation: **LKC "J"**  
 Deviated: No Whipstock:                      ft (KB)  
 Time Tool Opened: 01:23:10  
 Time Test Ended: 05:39:00  
 Interval: **4413.00 ft (KB) To 4450.00 ft (KB) (TVD)**  
 Total Depth: 4450.00 ft (KB) (TVD)  
 Hole Diameter: 7.88 inches Hole Condition: Good

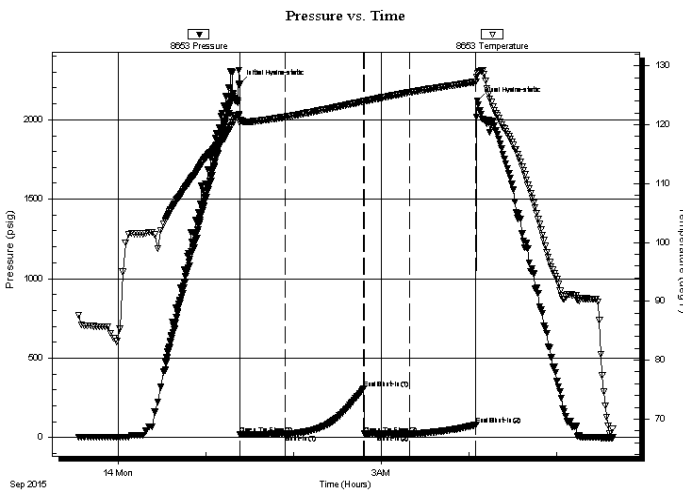
Test Type: Conventional Bottom Hole (Initial)  
 Tester: Kevin Mack  
 Unit No: 82  
 Reference Elevations: 3385.00 ft (KB)  
 3372.00 ft (CF)  
 KB to GR/CF: 13.00 ft

## Serial #: 8653

**Outside**

Press@RunDepth: 22.13 psig @ 4414.00 ft (KB)      Capacity: 8000.00 psig  
 Start Date: 2015.09.13      End Date: 2015.09.14      Last Calib.: 2015.09.14  
 Start Time: 23:32:00      End Time: 05:39:00      Time On Btm: 2015.09.14 @ 01:23:00  
 Time Off Btm: 2015.09.14 @ 04:06:00

**TEST COMMENT:** 30 - IF- Surface Blow built to 1/4" then died in 27 min.  
 45 - ISI- No Return  
 30 - FF- No Blow  
 45 - FSI- No Return



## PRESSURE SUMMARY

Time (Min.)	Pressure (psig)	Temp (deg F)	Annotation
0	2224.35	121.38	Initial Hydro-static
1	20.14	120.36	Open To Flow(1)
32	21.43	121.31	Shut-In(1)
85	306.19	123.94	End Shut-In(1)
86	22.23	123.92	Open To Flow(2)
117	22.13	125.49	Shut-In(2)
162	80.95	127.27	End Shut-In(2)
163	2120.47	128.75	Final Hydro-static

## Recovery

Length (ft)	Description	Volume (bbl)
5.00	OSM 100M (oil spots)	0.02

## Gas Rates

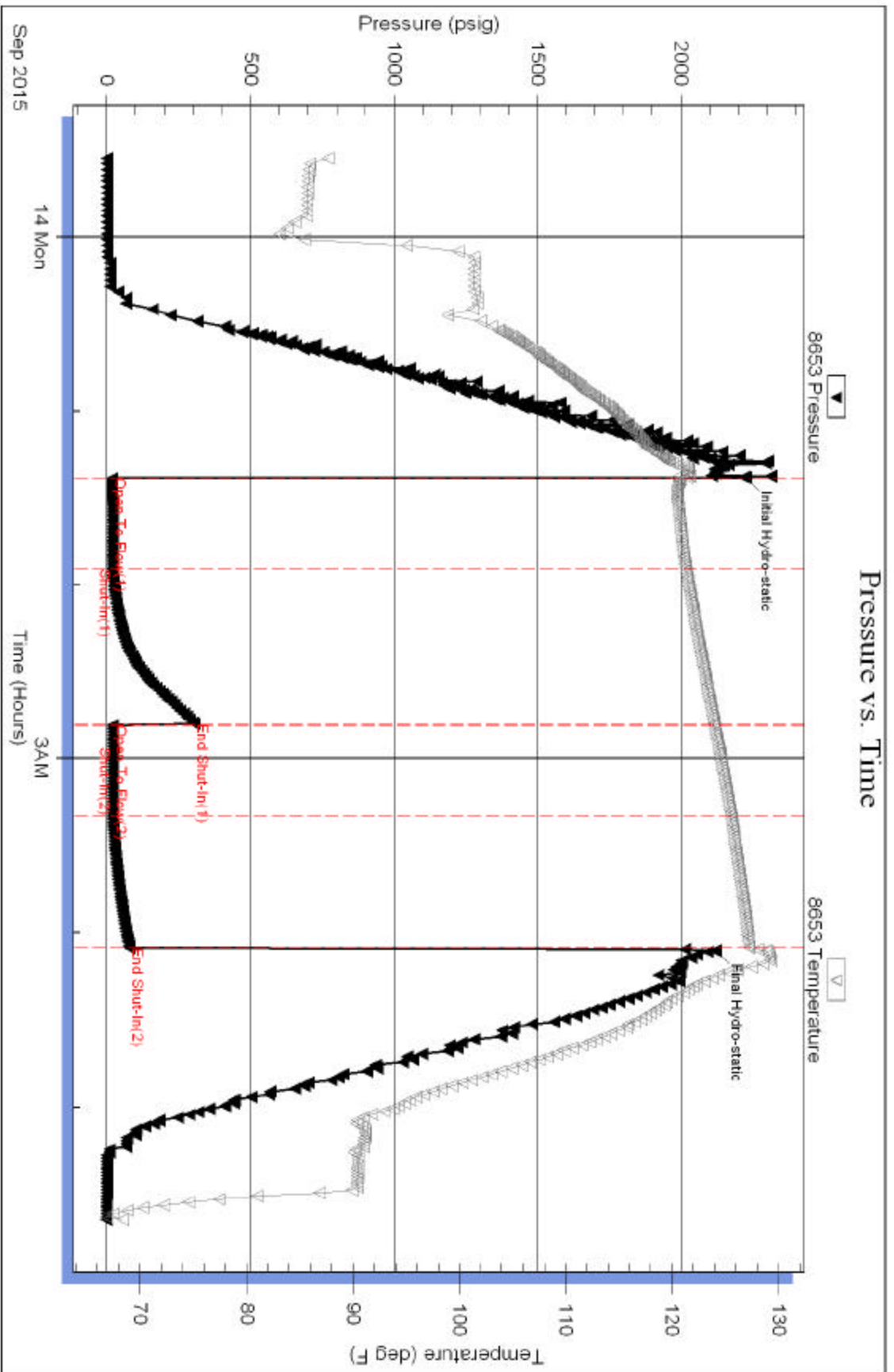
Choke (inches)	Pressure (psig)	Gas Rate (Mcf/d)

Serial #: 8653

Outside Bickle Energies, LLC

Beaver Creek #35-1

DGT Test Number: 3



Trickle Testing, Inc

Ref. No: 65224

Printed: 2015.09.14 @ 05:50:51