



TRILOBITE TESTING, INC.

DRILL STEM TEST REPORT

Bickle Energies, LLC
 2052 250th Ave
 Hays, KS 67601
 ATTN: Eli Felts

35-5S-37W Cheyenne, KS

Beaver Creek #35-1

Job Ticket: 65225 **DST#: 4**
 Test Start: 2015.09.14 @ 20:56:00

GENERAL INFORMATION:

Formation: **Lower KC**
 Deviated: No Whipstock: ft (KB)
 Time Tool Opened: 22:44:40
 Time Test Ended: 02:48:00
Interval: 4504.00 ft (KB) To 4550.00 ft (KB) (TVD)
 Total Depth: 4550.00 ft (KB) (TVD)
 Hole Diameter: 7.88 inches Hole Condition: Good

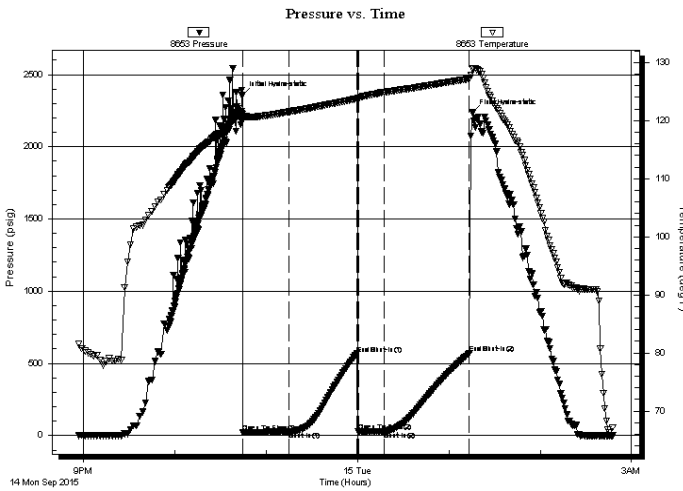
Test Type: Conventional Bottom Hole (Initial)
 Tester: Kevin Mack
 Unit No: 82
 Reference Elevations: 3385.00 ft (KB)
 3372.00 ft (CF)
 KB to GR/CF: 13.00 ft

Serial #: 8653

Outside

Press@RunDepth: 27.32 psig @ 4505.00 ft (KB)
 Start Date: 2015.09.14 End Date: 2015.09.15
 Start Time: 20:56:00 End Time: 02:48:00
 Capacity: 8000.00 psig
 Last Calib.: 2015.09.15
 Time On Btm: 2015.09.14 @ 22:44:30
 Time Off Btm: 2015.09.15 @ 01:15:30

TEST COMMENT: 30 - IF- Surface Blow built to 1/4"
 45 - ISI- No Return
 15 - FF- No Blow
 45 - FSI- No Return



PRESSURE SUMMARY

Time (Min.)	Pressure (psig)	Temp (deg F)	Annotation
0	2356.87	121.08	Initial Hydro-static
1	21.57	120.04	Open To Flow(1)
31	25.88	121.50	Shut-In(1)
75	566.09	123.75	End Shut-In(1)
76	26.11	123.80	Open To Flow(2)
93	27.32	124.86	Shut-In(2)
149	570.05	127.14	End Shut-In(2)
151	2236.41	128.86	Final Hydro-static

Recovery

Length (ft)	Description	Volume (bbl)
5.00	Mud 100M	0.02

Gas Rates

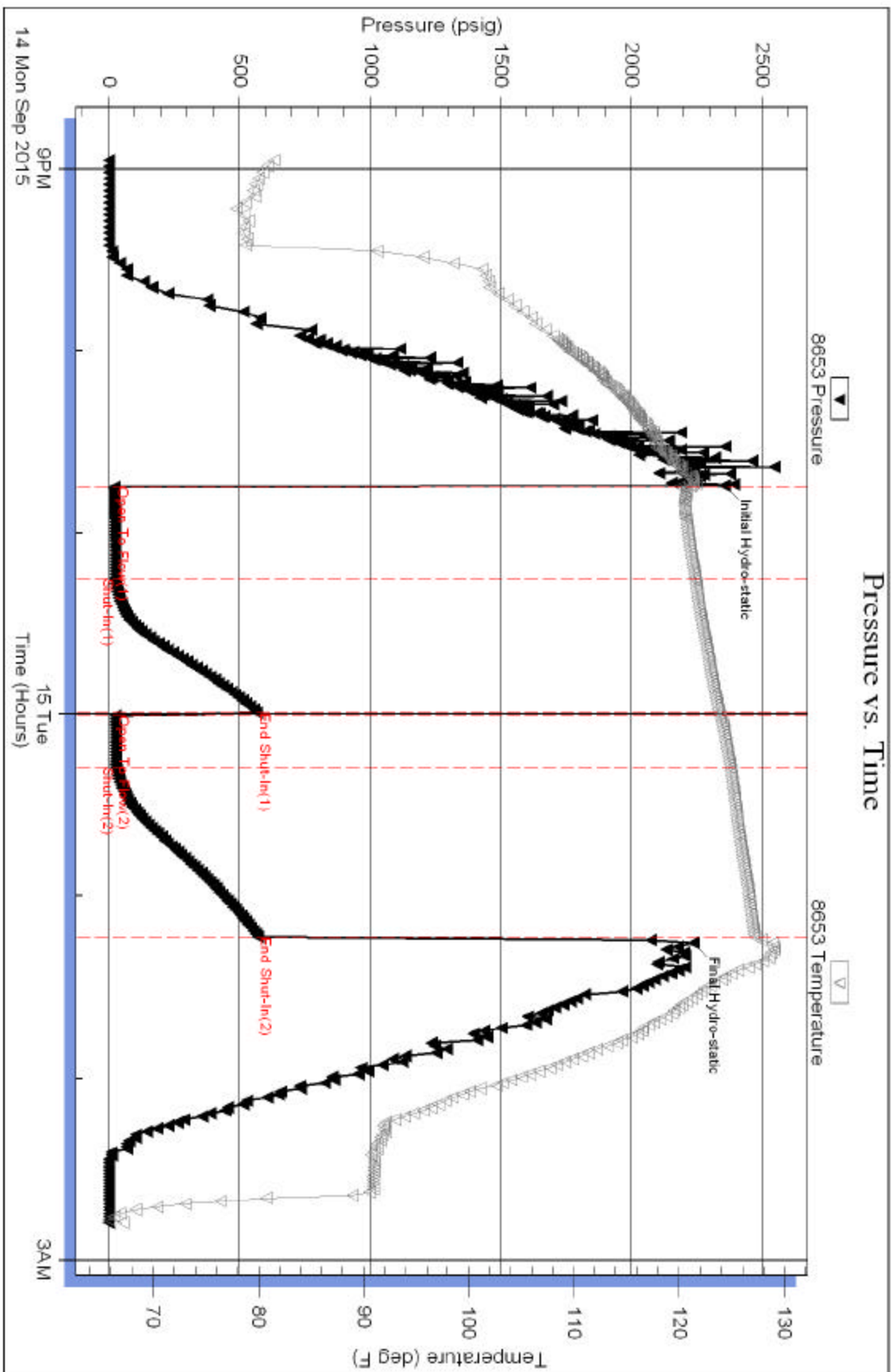
Choke (inches)	Pressure (psig)	Gas Rate (Mcf/d)

Serial #: 8653

Outside Bickle Energies, LLC

Beaver Creek #35-1

DGT Test Number: 4



Trickle Testing, Inc

Ref. No: 65225

Printed: 2015.09.15 @ 02:58:20