



**TRILOBITE TESTING, INC.**

# DRILL STEM TEST REPORT

Bickle Energies, LLC  
 2052 250th Ave  
 Hays, KS 67601  
 ATTN: Eli Felts

**35-5S-37W Cheyenne, KS**

**Beaver Creek #35-1**

Job Ticket: 49416      **DST#: 6**  
 Test Start: 2015.09.16 @ 18:25:00

## GENERAL INFORMATION:

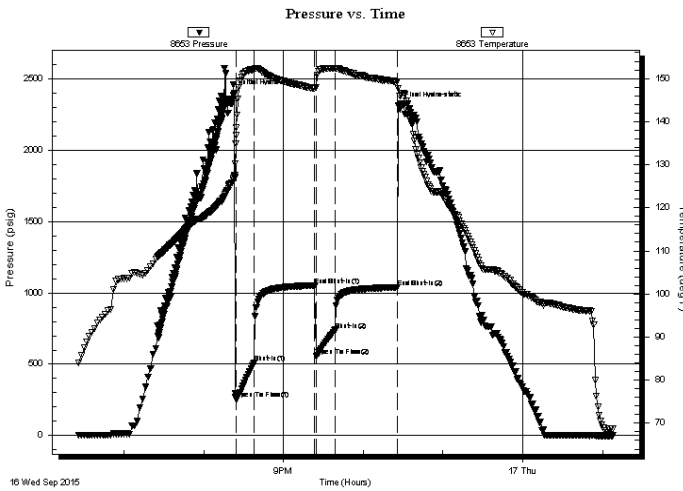
Formation: **Cherokee Sand**  
 Deviated: No Whipstock: ft (KB)  
 Time Tool Opened: 20:24:20  
 Time Test Ended: 01:08:00  
 Interval: **4767.00 ft (KB) To 4790.00 ft (KB) (TVD)**  
 Total Depth: 4790.00 ft (KB) (TVD)  
 Hole Diameter: 7.88 inches Hole Condition: Good  
 Test Type: Conventional Bottom Hole (Initial)  
 Tester: Kevin Mack  
 Unit No: 82  
 Reference Elevations: 3385.00 ft (KB)  
 3372.00 ft (CF)  
 KB to GR/CF: 13.00 ft

## Serial #: 8653

**Outside**

Press@RunDepth: 739.83 psig @ 4768.00 ft (KB)      Capacity: 8000.00 psig  
 Start Date: 2015.09.16      End Date: 2015.09.17      Last Calib.: 2015.09.17  
 Start Time: 18:25:00      End Time: 01:08:00      Time On Btm: 2015.09.16 @ 20:23:10  
 Time Off Btm: 2015.09.16 @ 22:26:30

**TEST COMMENT:** 15 - IF- BoB in 1 min.  
 45 - ISI- Weak Surface Return stated at 2 min. Built to 1/4", then died back to surface Blow  
 15 - FF- BoB in 1 1/2 min.  
 45 - FSI- No Return



## PRESSURE SUMMARY

Time (Min.)	Pressure (psig)	Temp (deg F)	Annotation
0	2398.64	127.51	Initial Hydro-static
2	256.56	136.77	Open To Flow(1)
15	511.80	152.16	Shut-In(1)
61	1053.16	147.63	End Shut-In(1)
62	557.01	147.87	Open To Flow(2)
76	739.83	152.31	Shut-In(2)
123	1040.12	149.27	End Shut-In(2)
124	2313.79	147.75	Final Hydro-static

## Recovery

Length (ft)	Description	Volume (bbl)
750.00	MW 2M 98W	9.42
441.00	MW 5M 95W	6.19
189.00	MW 20M 80W	2.65
176.00	MW 50M 50W	2.47

## Gas Rates

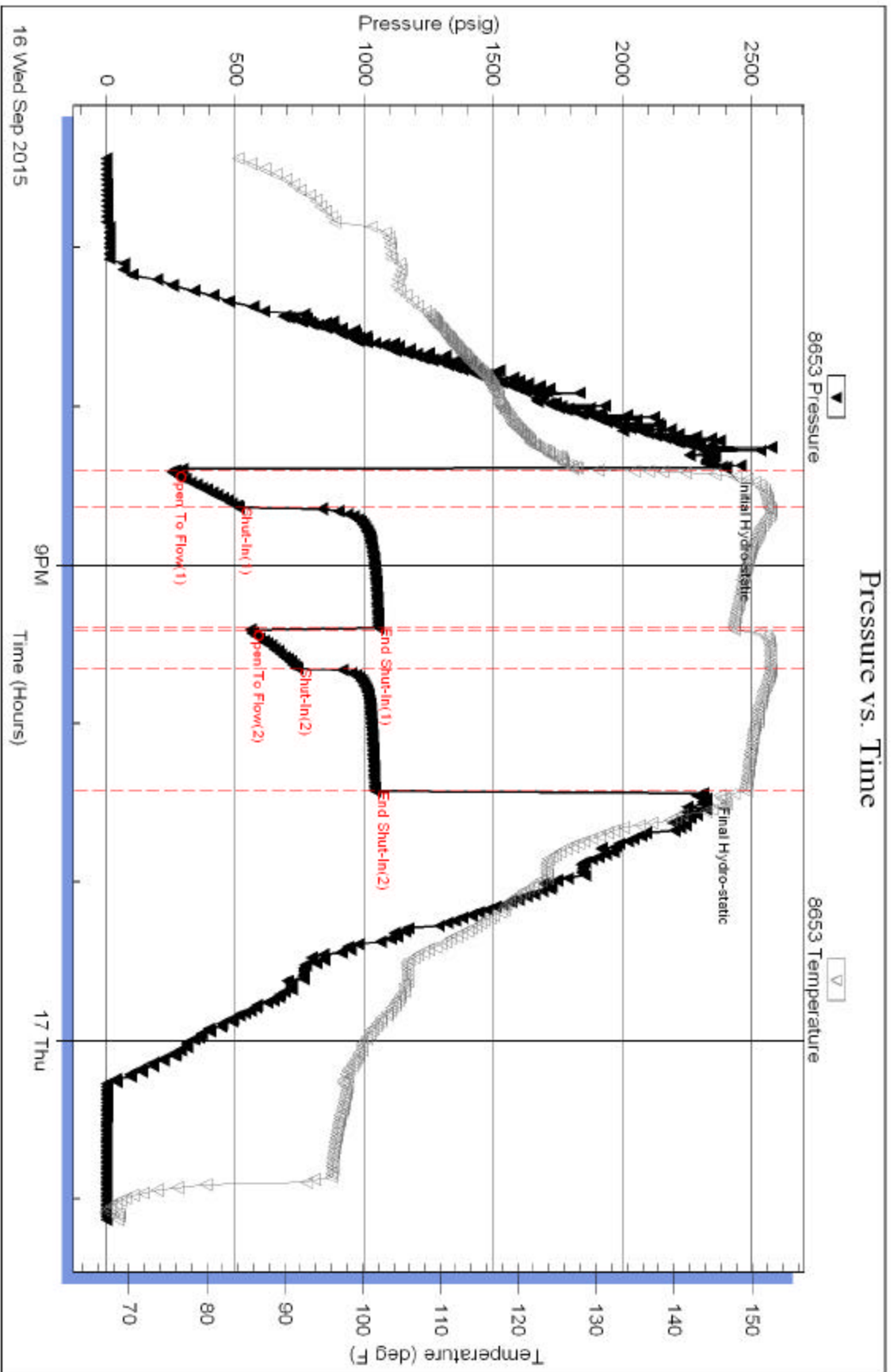
Choke (inches)	Pressure (psig)	Gas Rate (Mcf/d)

Serial #: 8653

Outside Bickle Energies, LLC

Beaver Creek #35-1

DGT Test Number: 6



Tribble Testing, Inc

Ref. No: 49416

Printed: 2015.09.17 @ 01:19:11