



**TRILOBITE
TESTING, INC.**

DRILL STEM TEST REPORT

Vincent Oil Corporation
155 N Market STE 700
Wichita, Ks. 67202
ATTN: Jim Hall

28-28s-23w Ford, Co. Ks.

Frink-Brown 1-28

Job Ticket: 59805

DST#: 4

Test Start: 2015.06.28 @ 02:28:03

GENERAL INFORMATION:

Formation: **Mississippi**

Deviated: No Whipstock: 0.00 ft (KB)

Time Tool Opened: 05:06:03

Time Test Ended: 12:38:33

Test Type: Conventional Bottom Hole (Reset)

Tester: Matt Smith

Unit No: 53

Interval: 5150.00 ft (KB) To 5165.00 ft (KB) (TVD)

Reference Elevations: 2476.00 ft (KB)

Total Depth: 5165.00 ft (KB) (TVD)

2463.00 ft (CF)

Hole Diameter: 7.88 inches Hole Condition: Fair

KB to GR/CF: 13.00 ft

Serial #: 8931

Inside

Press @ Run Depth: 108.80 psig @ 5151.00 ft (KB)

Capacity: 8000.00 psig

Start Date: 2015.06.28

End Date:

2015.06.28

Last Calib.:

2015.06.28

Start Time: 02:28:08

End Time:

12:38:33

Time On Btm:

2015.06.28 @ 05:03:48

Time Off Btm:

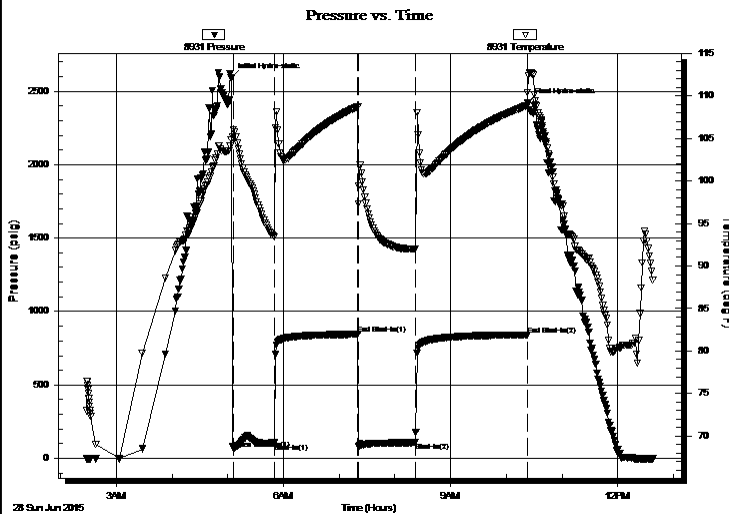
2015.06.28 @ 10:22:33

TEST COMMENT: IF: Strong blow . B.O.B. in 20 secs., G.T.S. in 16 mins. Gauged gas, see gas report.

IS: No blow .

FF: Strong blow . B.O.B. & G.T.S., immediately. Gauged gas, see gas report.

FS: No blow .



PRESSURE SUMMARY

Time (Min.)	Pressure (psig)	Temp (deg F)	Annotation
0	2590.00	104.83	Initial Hydro-static
3	65.19	106.05	Open To Flow (1)
47	105.65	93.38	Shut-In(1)
137	844.67	108.74	End Shut-In(1)
138	79.30	97.30	Open To Flow (2)
199	108.80	92.02	Shut-In(2)
319	841.20	108.85	End Shut-In(2)
319	2418.88	110.35	Final Hydro-static

Recovery

Length (ft)	Description	Volume (bbl)
60.00	GWCM 5%g 15%w 80%m	0.30
10.00	GM 2%g 98%m	0.05
0.00	RW .24 @ 97 = 20000 Chlorides	0.00

Gas Rates

	Choke (inches)	Pressure (psig)	Gas Rate (Mcf/d)
First Gas Rate	0.75	35.00	771.62
Last Gas Rate	0.75	22.00	568.56
Max. Gas Rate	0.75	35.00	771.62

* Recovery from multiple tests



**TRILOBITE
TESTING, INC.**

DRILL STEM TEST REPORT

FLUID SUMMARY

Vincent Oil Corporation

28-28s-23w Ford, Co. Ks.

155 N Market STE 700
Wichita, Ks. 67202

Frink-Brown 1-28

Job Ticket: 59805

DST#: 4

ATTN: Jim Hall

Test Start: 2015.06.28 @ 02:28:03

Mud and Cushion Information

Mud Type: Gel Chem

Cushion Type:

Oil API:

deg API

Mud Weight: 9.00 lb/gal

Cushion Length:

ft

Water Salinity:

80000 ppm

Viscosity: 52.00 sec/qt

Cushion Volume:

bbbl

Water Loss: 9.18 in³

Gas Cushion Type:

Resistivity: ohm.m

Gas Cushion Pressure:

psig

Salinity: 8000.00 ppm

Filter Cake: 0.20 inches

Recovery Information

Recovery Table

Length ft	Description	Volume bbbl
60.00	GWCM 5%g 15%w 80%m	0.295
10.00	GM 2%g 98%m	0.049
0.00	RW .24 @ 97 = 20000 Chlorides	0.000

Total Length: 70.00 ft Total Volume: 0.344 bbl

Num Fluid Samples: 1

Num Gas Bombs: 3

Serial #: MAS PRATT

Laboratory Name: Caraway

Laboratory Location: Liberal, KS

Recovery Comments: RW is .24 @ 97 degrees = Chlorides 20,000.



**TRILOBITE
TESTING, INC.**

DRILL STEM TEST REPORT

GAS RATES

Vincent Oil Corporation

28-28s-23w Ford, Co. Ks.

155 N Market STE 700
Wichita, Ks. 67202

Frink-Brown 1-28

Job Ticket: 59805

DST#: 4

ATTN: Jim Hall

Test Start: 2015.06.28 @ 02:28:03

Gas Rates Information

Temperature: 59 (deg F)
Relative Density: 0.65
Z Factor: 0.8

Gas Rates Table

Flow Period	Elapsed Time	Choke (inches)	Pressure (psig)	Gas Rate (Mcf/d)
1	20	0.75	35.00	771.62
1	20	0.75	35.00	771.62
1	30	0.75	18.00	506.08
1	40	0.75	17.00	490.46
1	45	0.75	17.00	490.46
2	10	0.75	18.00	506.08
2	20	0.75	20.00	537.32
2	30	0.75	21.00	552.94
2	40	0.75	21.50	560.75
2	50	0.75	22.00	568.56

Serial #: 8931

Inside

Vincent Oil Corporation

Fink-Brown 1-28

DST Test Number: 4

Pressure vs. Time

