



## DRILL STEM TEST REPORT

Prepared For: **Coral Production Corp**

1600 Stout st STE 1500  
Denver CO 80202

ATTN: Tim Lauer

**5-2S-41w Cheyenne,KS**

**Bammes-Brunswig #33-05D**

Start Date: 2015.10.15 @ 02:30:00

End Date: 2015.10.15 @ 10:15:00

Job Ticket #: 62824                      DST #: 1

Trilobite Testing, Inc  
1515 Commerce Parkway Hays, KS 67601  
ph: 785-625-4778 fax: 785-625-5620

Printed: 2015.10.26 @ 09:40:55



**TRILOBITE  
TESTING, INC**

# DRILL STEM TEST REPORT

Coral Production Corp

**Bammes-Brunswig #33-05D**

1600 Stout st STE 1500  
Denver CO 80202

**5-2S-41w Cheyenne,KS**

Job Ticket: 62824

**DST#: 1**

ATTN: Tim Lauer

Test Start: 2015.10.15 @ 02:30:00

## GENERAL INFORMATION:

Formation: **Foraker-Tarkio**

Deviated: No Whipstock: ft (KB)

Time Tool Opened: 05:04:00

Time Test Ended: 10:15:00

Test Type: Conventional Bottom Hole (Initial)

Tester: Robert Zodrow

Unit No: 66

**Interval: 4042.00 ft (KB) To 4170.00 ft (KB) (TVD)**

Reference Elevations: 3496.00 ft (KB)

Total Depth: 4170.00 ft (KB) (TVD)

3486.00 ft (CF)

Hole Diameter: 7.88 inches Hole Condition: Fair

KB to GR/CF: 10.00 ft

**Serial #: 6741**

**Inside**

Press@RunDepth: 116.35 psig @ 4043.00 ft (KB)

Capacity: 8000.00 psig

Start Date: 2015.10.15

End Date:

2015.10.15

Last Calib.: 2015.10.15

Start Time: 02:30:05

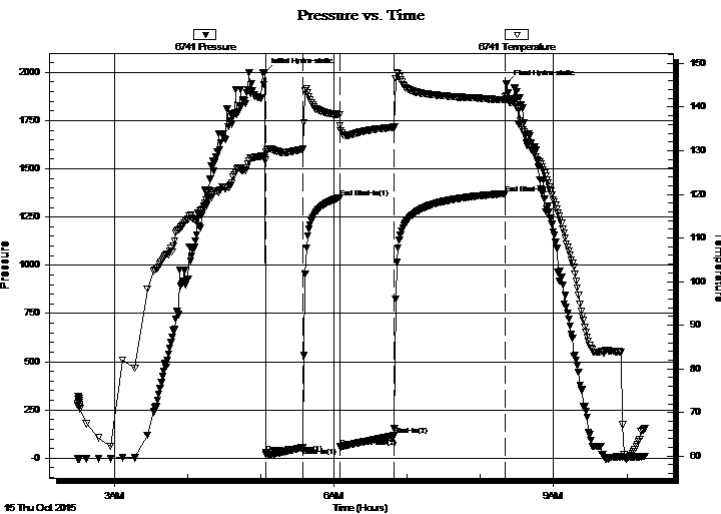
End Time:

10:14:59

Time On Btm: 2015.10.15 @ 05:03:30

Time Off Btm: 2015.10.15 @ 08:21:30

**TEST COMMENT:** 30-IF- Blow built to 8 3/4"  
30-ISI- No return  
45-FF- Blow started in 3 mins built to 9 1/2"  
90-FSI- No return



## PRESSURE SUMMARY

Time (Min.)	Pressure (psig)	Temp (deg F)	Annotation
0	1997.85	128.39	Initial Hydro-static
1	27.26	127.97	Open To Flow (1)
31	54.58	130.32	Shut-In(1)
61	1350.43	138.33	End Shut-In(1)
62	58.08	135.71	Open To Flow (2)
106	116.35	135.37	Shut-In(2)
197	1371.27	141.71	End Shut-In(2)
198	1938.45	142.65	Final Hydro-static

## Recovery

Length (ft)	Description	Volume (bbl)
200.00	MW 10%M 90%W	2.81

## Gas Rates

	Choke (inches)	Pressure (psig)	Gas Rate (Mcf/d)





**TRILOBITE  
TESTING, INC**

# DRILL STEM TEST REPORT

**TOOL DIAGRAM**

Coral Production Corp

**Bammes-Brunswig #33-05D**

1600 Stout st STE 1500  
Denver CO 80202

**5-2S-41w Cheyenne,KS**

Job Ticket: 62824

**DST#: 1**

ATTN: Tim Lauer

Test Start: 2015.10.15 @ 02:30:00

## Tool Information

Drill Pipe:	Length: 4030.00 ft	Diameter: 3.80 inches	Volume: 56.53 bbl	Tool Weight: 2500.00 lb
Heavy Wt. Pipe:	Length: 0.00 ft	Diameter: 0.00 inches	Volume: 0.00 bbl	Weight set on Packer: 25000.00 lb
Drill Collar:	Length: 0.00 ft	Diameter: 0.00 inches	Volume: 0.00 bbl	Weight to Pull Loose: 64000.00 lb
			<u>Total Volume: 56.53 bbl</u>	Tool Chased ft
Drill Pipe Above KB:	7.00 ft			String Weight: Initial 48000.00 lb
Depth to Top Packer:	4042.00 ft			Final 48000.00 lb
Depth to Bottom Packer:	ft			
Interval between Packers:	128.00 ft			
Tool Length:	147.00 ft			
Number of Packers:	2	Diameter: 6.75 inches		

Tool Comments:

Tool Description	Length (ft)	Serial No.	Position	Depth (ft)	Accum. Lengths
------------------	-------------	------------	----------	------------	----------------

Shut In Tool	5.00			4028.00	
Hydraulic tool	5.00			4033.00	
Packer	5.00			4038.00	19.00 Bottom Of Top Packer
Packer	4.00			4042.00	
Stubb	1.00			4043.00	
Recorder	0.00	6741	Inside	4043.00	
Recorder	0.00	8521	Outside	4043.00	
Perforations	28.00			4071.00	
Change Over Sub	1.00			4072.00	
Drill Pipe	94.00			4166.00	
Change Over Sub	1.00			4167.00	
Bullnose	3.00			4170.00	128.00 Bottom Packers & Anchor

**Total Tool Length: 147.00**



**TRILOBITE  
TESTING, INC**

# DRILL STEM TEST REPORT

**FLUID SUMMARY**

Coral Production Corp

**Bammes-Brunswig #33-05D**

1600 Stout st STE 1500  
Denver CO 80202

**5-2S-41w Cheyenne,KS**

Job Ticket: 62824

**DST#: 1**

ATTN: Tim Lauer

Test Start: 2015.10.15 @ 02:30:00

## Mud and Cushion Information

Mud Type: Gel Chem

Cushion Type:

Oil API:

deg API

Mud Weight: 9.00 lb/gal

Cushion Length:

ft

Water Salinity:

25000 ppm

Viscosity: 50.00 sec/qt

Cushion Volume:

bbbl

Water Loss: 10.36 in<sup>3</sup>

Gas Cushion Type:

Resistivity: 0.00 ohm.m

Gas Cushion Pressure:

psig

Salinity: 700.00 ppm

Filter Cake: 1.00 inches

## Recovery Information

Recovery Table

Length ft	Description	Volume bbl
200.00	MW 10%M 90%W	2.805

Total Length: 200.00 ft      Total Volume: 2.805 bbl

Num Fluid Samples: 0

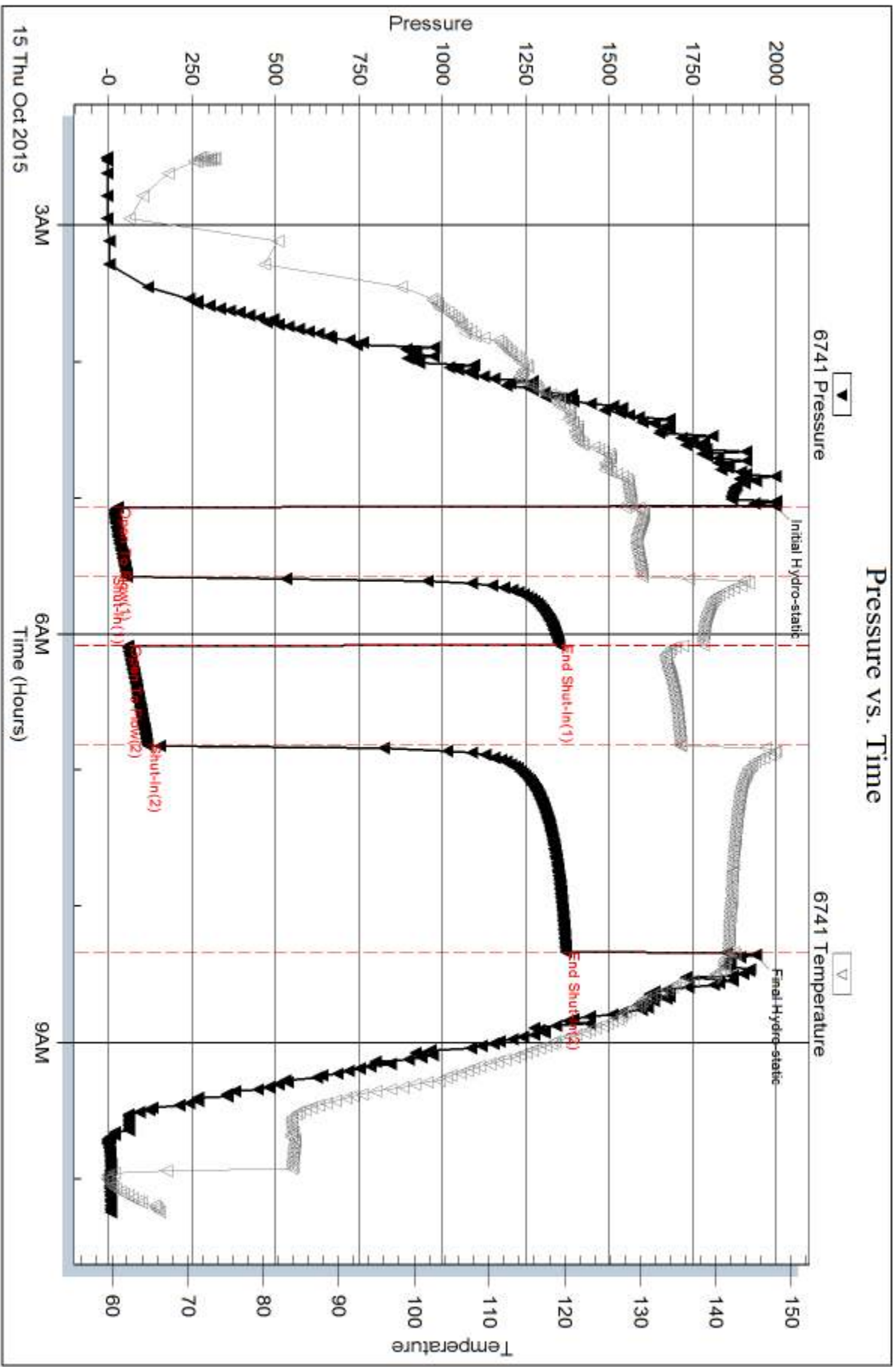
Num Gas Bombs: 0

Serial #:

Laboratory Name:

Laboratory Location:

Recovery Comments: rw = .340 @ 59 deg =25000

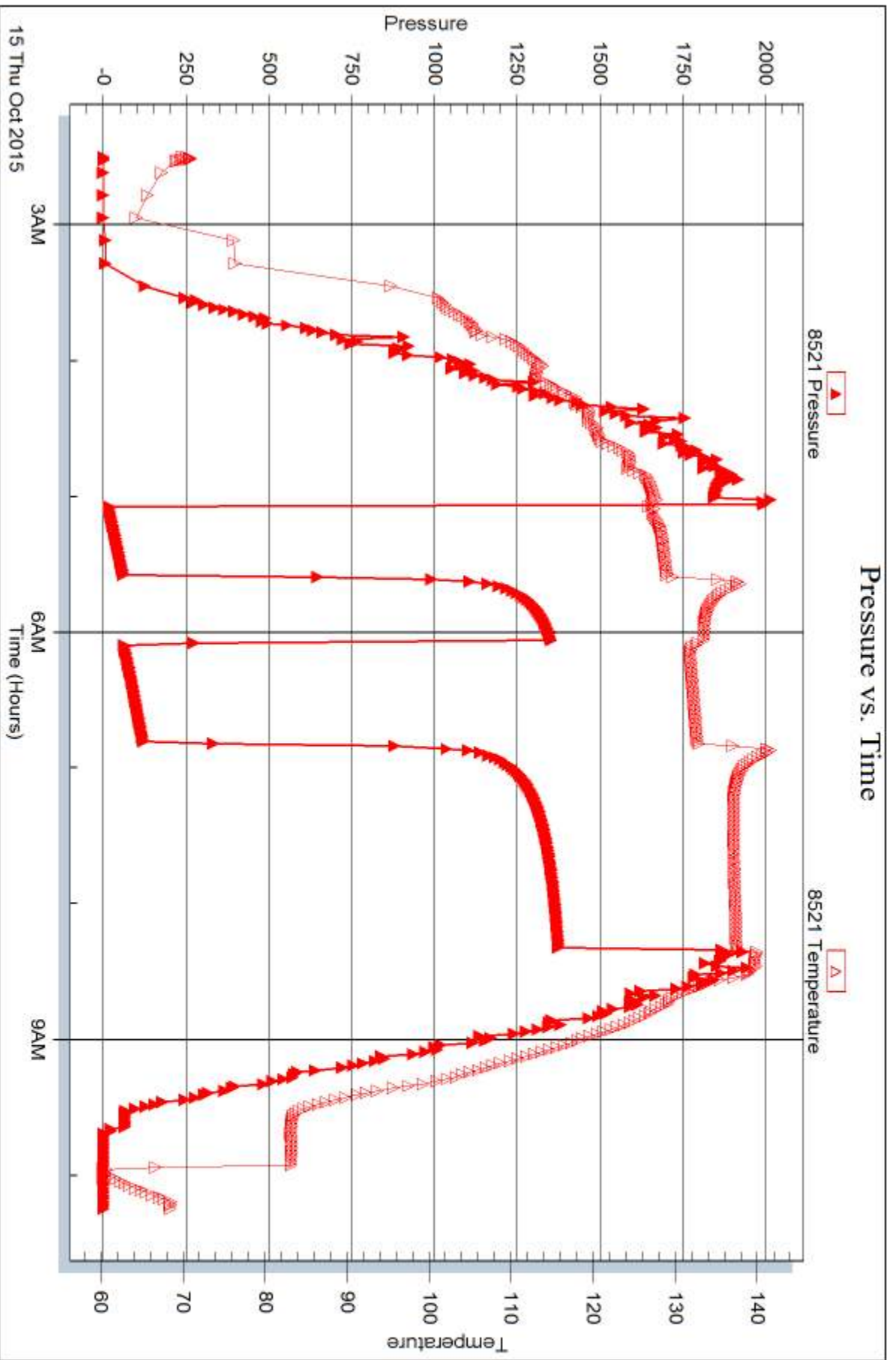


Serial #: 8521

Outside Coral Production Corp

5-2S-41w Cheyenne,KS

DST Test Number: 1





## DRILL STEM TEST REPORT

Prepared For: **Coral Production Corp**

1600 Stout st STE 1500  
Denver CO 80202

ATTN: Tim Lauer

**5-2S-41w Cheyenne,KS**

**Bammes-Brunswig #33-05D**

Start Date: 2015.10.16 @ 10:30:00

End Date: 2015.10.16 @ 17:36:30

Job Ticket #: 62825                      DST #: 2

Trilobite Testing, Inc  
1515 Commerce Parkway Hays, KS 67601  
ph: 785-625-4778 fax: 785-625-5620

Printed: 2015.10.26 @ 09:40:32





**TRILOBITE TESTING, INC.**

# DRILL STEM TEST REPORT

Coral Production Corp

**Bammes-Brunswig #33-05D**

1600 Stout st STE 1500  
Denver CO 80202

**5-2S-41w Cheyenne,KS**

Job Ticket: 62825

**DST#: 2**

ATTN: Tim Lauer

Test Start: 2015.10.16 @ 10:30:00

## GENERAL INFORMATION:

Formation: **Oread - LKC "A"**

Deviated: No Whipstock: ft (KB)

Time Tool Opened: 12:53:00

Time Test Ended: 17:36:30

Test Type: Conventional Bottom Hole (Reset)

Tester: Robert Zodrow

Unit No: 66

**Interval: 4304.00 ft (KB) To 4420.00 ft (KB) (TVD)**

Reference Elevations: 3496.00 ft (KB)

Total Depth: 4420.00 ft (KB) (TVD)

3486.00 ft (CF)

Hole Diameter: 7.88 inches Hole Condition: Fair

KB to GR/CF: 10.00 ft

**Serial #: 6741**

**Inside**

Press@RunDepth: 15.86 psig @ 4305.00 ft (KB)

Capacity: 8000.00 psig

Start Date: 2015.10.16

End Date:

2015.10.16

Last Calib.:

2015.10.16

Start Time: 10:30:05

End Time:

17:36:29

Time On Btm:

2015.10.16 @ 12:52:30

Time Off Btm:

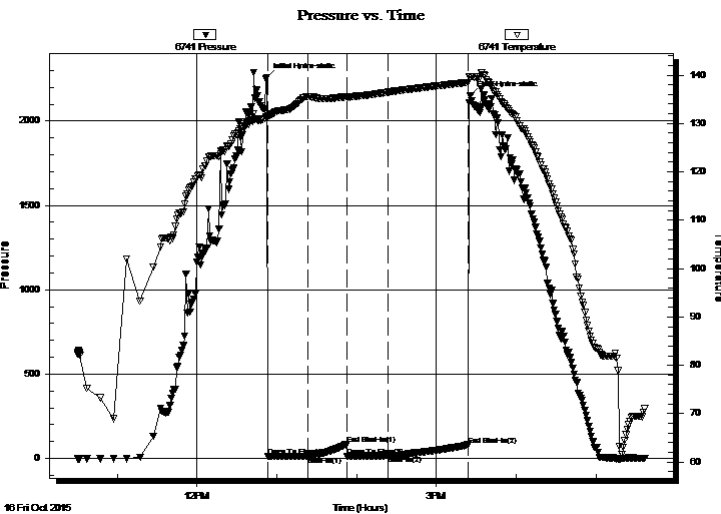
2015.10.16 @ 15:25:30

TEST COMMENT: 30-IF- Blow built to 3/4"

30-IS- No return

30-FF- No blow

60-FS- No return



## PRESSURE SUMMARY

Time (Min.)	Pressure (psig)	Temp (deg F)	Annotation
0	2258.80	131.48	Initial Hydro-static
1	13.24	131.26	Open To Flow (1)
31	13.93	135.56	Shut-In(1)
60	84.16	135.56	End Shut-In(1)
61	11.97	135.54	Open To Flow (2)
91	15.86	136.48	Shut-In(2)
151	79.44	138.48	End Shut-In(2)
153	2149.82	139.67	Final Hydro-static

## Recovery

Length (ft)	Description	Volume (bbl)
5.00	MUD 100%M	0.07

\* Recovery from multiple tests

## Gas Rates

Choke (inches)	Pressure (psig)	Gas Rate (Mcf/d)



**TRILOBITE  
TESTING, INC**

# DRILL STEM TEST REPORT

Coral Production Corp

1600 Stout st STE 1500  
Denver CO 80202

ATTN: Tim Lauer

**Bammes-Brunswig #33-05D**

**5-2S-41w Cheyenne,KS**

Job Ticket: 62825

**DST#: 2**

Test Start: 2015.10.16 @ 10:30:00

## GENERAL INFORMATION:

Formation: **Oread - LKC "A"**

Deviated: No Whipstock: ft (KB)

Time Tool Opened: 12:53:00

Time Test Ended: 17:36:30

Test Type: Conventional Bottom Hole (Reset)

Tester: Robert Zodrow

Unit No: 66

**Interval: 4304.00 ft (KB) To 4420.00 ft (KB) (TVD)**

Total Depth: 4420.00 ft (KB) (TVD)

Hole Diameter: 7.88 inches Hole Condition: Fair

Reference Elevations: 3496.00 ft (KB)

3486.00 ft (CF)

KB to GR/CF: 10.00 ft

**Serial #: 8521 Outside**

Press@RunDepth: psig @ 4305.00 ft (KB)

Start Date: 2015.10.16

End Date:

2015.10.16

Start Time: 10:30:05

End Time:

17:35:59

Capacity: 8000.00 psig

Last Calib.: 2015.10.16

Time On Btm:

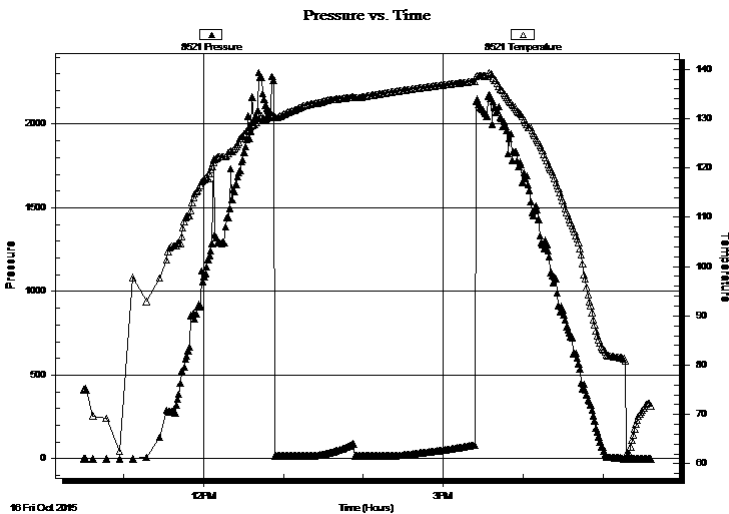
Time Off Btm:

TEST COMMENT: 30-IF- Blow built to 3/4"

30-ISI- No return

30-FF- No blow

60-FSI- No return



## PRESSURE SUMMARY

Time (Min.)	Pressure (psig)	Temp (deg F)	Annotation

## Recovery

Length (ft)	Description	Volume (bbl)
5.00	MUD 100%M	0.07

## Gas Rates

	Choke (inches)	Pressure (psig)	Gas Rate (Mcf/d)

\* Recovery from multiple tests



**TRILOBITE  
TESTING, INC**

# DRILL STEM TEST REPORT

**TOOL DIAGRAM**

Coral Production Corp

**Bammes-Brunswig #33-05D**

1600 Stout st STE 1500  
Denver CO 80202

**5-2S-41w Cheyenne,KS**

Job Ticket: 62825

**DST#: 2**

ATTN: Tim Lauer

Test Start: 2015.10.16 @ 10:30:00

## Tool Information

Drill Pipe:	Length: 4310.00 ft	Diameter: 3.80 inches	Volume: 60.46 bbl	Tool Weight: 2500.00 lb
Heavy Wt. Pipe:	Length: 0.00 ft	Diameter: 0.00 inches	Volume: 0.00 bbl	Weight set on Packer: 25000.00 lb
Drill Collar:	Length: 0.00 ft	Diameter: 0.00 inches	Volume: 0.00 bbl	Weight to Pull Loose: 62000.00 lb
			<u>Total Volume: 60.46 bbl</u>	Tool Chased ft
Drill Pipe Above KB:	25.00 ft			String Weight: Initial 50000.00 lb
Depth to Top Packer:	4304.00 ft			Final 50000.00 lb
Depth to Bottom Packer:	ft			
Interval between Packers:	116.00 ft			
Tool Length:	135.00 ft			
Number of Packers:	2	Diameter: 6.75 inches		

Tool Comments:

## Tool Description

Tool Description	Length (ft)	Serial No.	Position	Depth (ft)	Accum. Lengths
Shut In Tool	5.00			4290.00	
Hydraulic tool	5.00			4295.00	
Packer	5.00			4300.00	19.00 Bottom Of Top Packer
Packer	4.00			4304.00	
Stubb	1.00			4305.00	
Recorder	0.00	6741	Inside	4305.00	
Recorder	0.00	8521	Outside	4305.00	
Perforations	16.00			4321.00	
Change Over Sub	1.00			4322.00	
Drill Pipe	94.00			4416.00	
Change Over Sub	1.00			4417.00	
Bullnose	3.00			4420.00	116.00 Bottom Packers & Anchor

**Total Tool Length: 135.00**



**TRILOBITE  
TESTING, INC**

# DRILL STEM TEST REPORT

## FLUID SUMMARY

Coral Production Corp

**Bammes-Brunswig #33-05D**

1600 Stout st STE 1500  
Denver CO 80202

**5-2S-41w Cheyenne,KS**

Job Ticket: 62825

**DST#: 2**

ATTN: Tim Lauer

Test Start: 2015.10.16 @ 10:30:00

### Mud and Cushion Information

Mud Type: Gel Chem

Cushion Type:

Oil API:

deg API

Mud Weight: 9.00 lb/gal

Cushion Length:

ft

Water Salinity:

ppm

Viscosity: 70.00 sec/qt

Cushion Volume:

bbbl

Water Loss: 9.17 in<sup>3</sup>

Gas Cushion Type:

Resistivity: 0.00 ohm.m

Gas Cushion Pressure:

psig

Salinity: 500.00 ppm

Filter Cake: 1.00 inches

### Recovery Information

Recovery Table

Length ft	Description	Volume bbl
5.00	MUD 100%M	0.070

Total Length: 5.00 ft      Total Volume: 0.070 bbl

Num Fluid Samples: 0

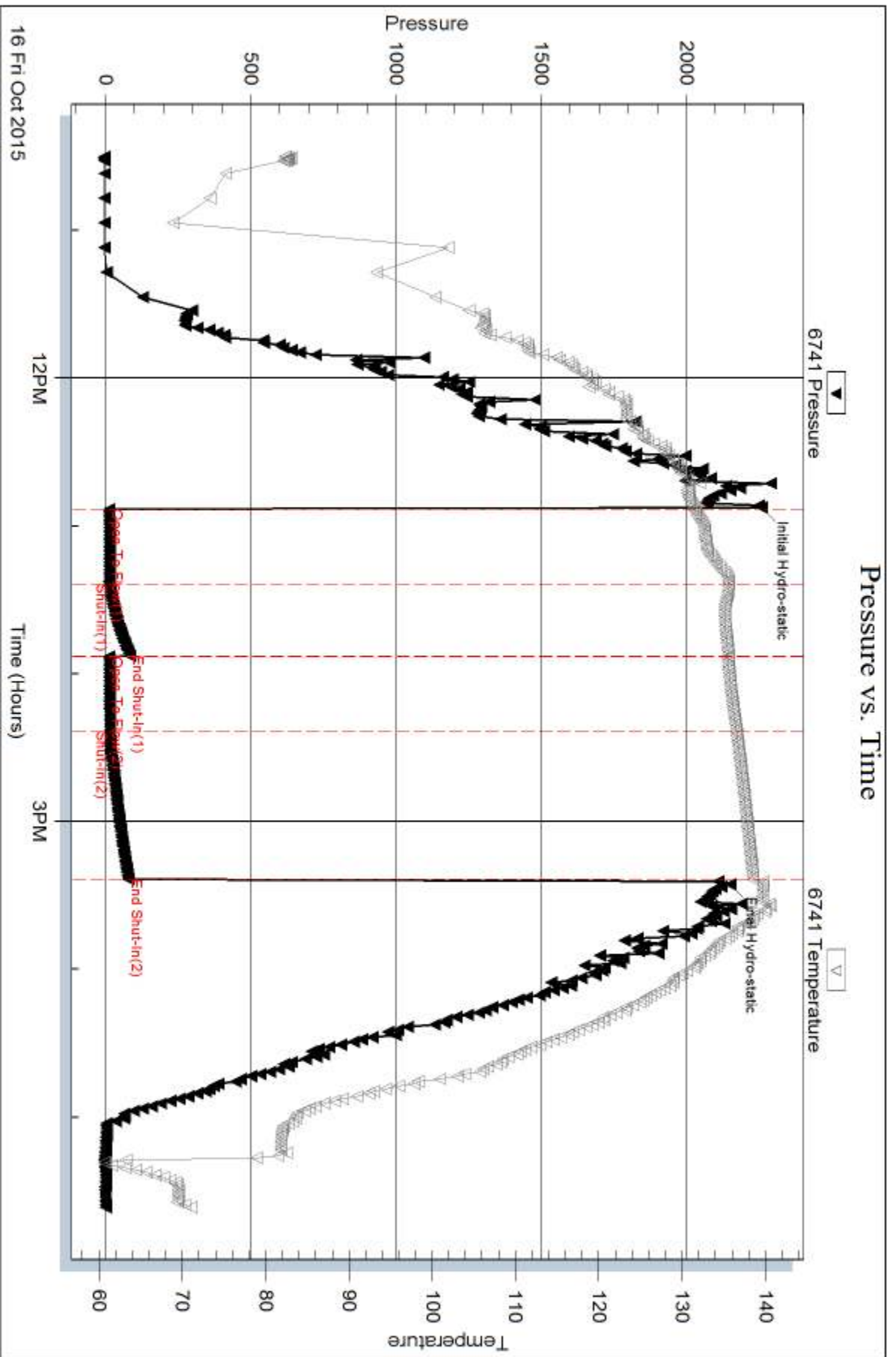
Num Gas Bombs: 0

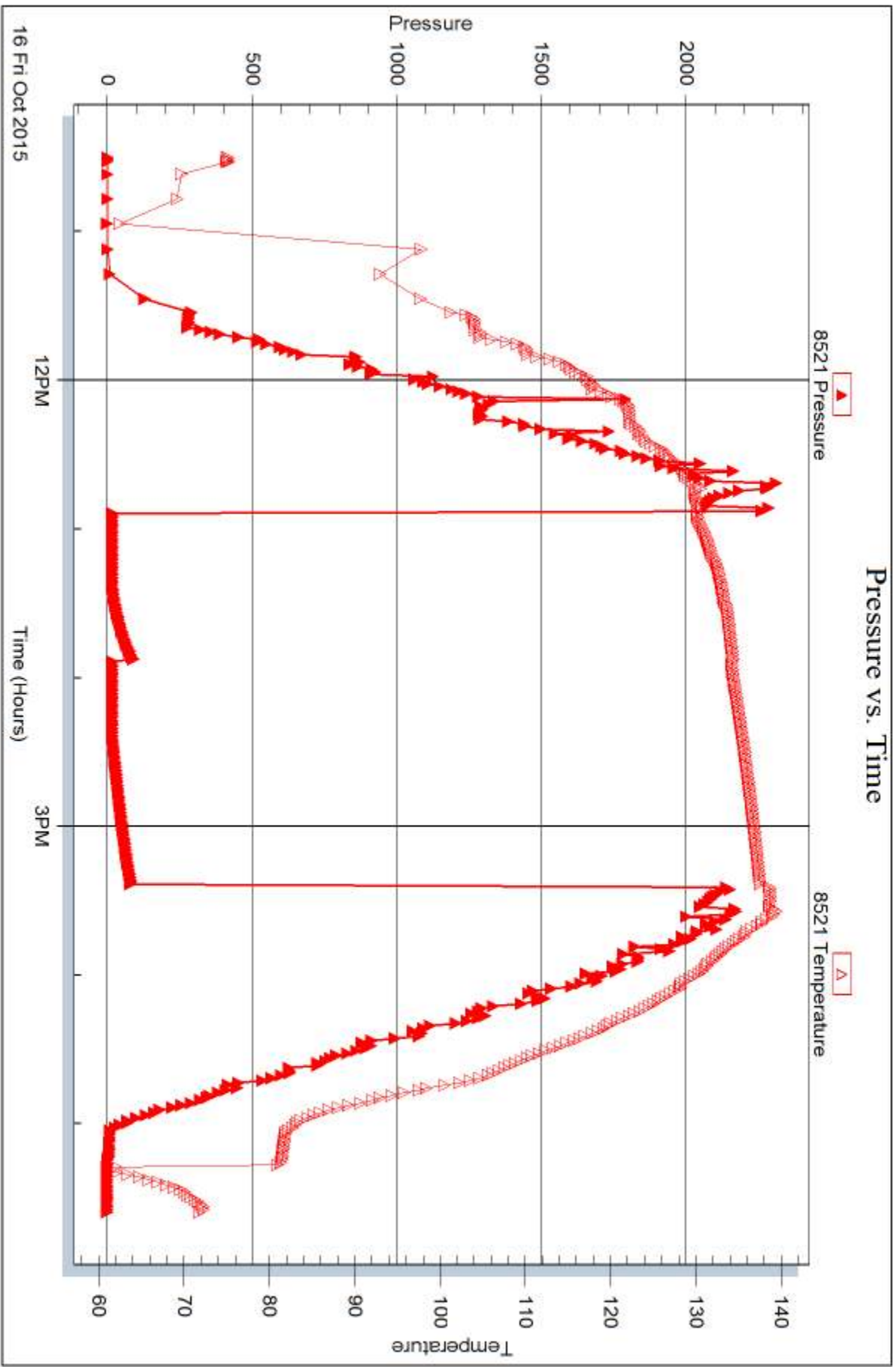
Serial #:

Laboratory Name:

Laboratory Location:

Recovery Comments:







## DRILL STEM TEST REPORT

Prepared For: **Coral Production Corp**

1600 Stout st STE 1500  
Denver CO 80202

ATTN: Tim Lauer

**5-2S-41w Cheyenne,KS**

**Bammes-Brunswig #33-05D**

Start Date: 2015.10.17 @ 20:00:00

End Date: 2015.10.18 @ 03:34:00

Job Ticket #: 64951                      DST #: 3

Trilobite Testing, Inc  
1515 Commerce Parkway Hays, KS 67601  
ph: 785-625-4778 fax: 785-625-5620

Printed: 2015.10.26 @ 09:40:10

Coral Production Corp

Bammes-Brunswig #33-05D

5-2S-41w Cheyenne,KS

DST # 3

LKC "H - J"

2015.10.17



**TRILOBITE  
TESTING, INC**

# DRILL STEM TEST REPORT

Coral Production Corp

**Bammes-Brunswig #33-05D**

1600 Stout st STE 1500  
Denver CO 80202

**5-2S-41w Cheyenne,KS**

ATTN: Tim Lauer

Job Ticket: 64951

**DST#: 3**

Test Start: 2015.10.17 @ 20:00:00

## GENERAL INFORMATION:

Formation: **LKC "H - J"**

Deviated: No Whipstock: ft (KB)

Time Tool Opened: 23:01:00

Time Test Ended: 03:34:00

Test Type: Conventional Bottom Hole (Reset)

Tester: Robert Zodrow

Unit No: 66

**Interval: 4550.00 ft (KB) To 4630.00 ft (KB) (TVD)**

Reference Elevations: 3496.00 ft (KB)

Total Depth: 4630.00 ft (KB) (TVD)

3486.00 ft (CF)

Hole Diameter: 7.88 inches Hole Condition: Fair

KB to GR/CF: 10.00 ft

**Serial #: 6741**

**Inside**

Press@RunDepth: 19.99 psig @ 4551.00 ft (KB)

Capacity: 8000.00 psig

Start Date: 2015.10.17 End Date: 2015.10.18

Last Calib.: 2015.10.18

Start Time: 20:00:05 End Time: 03:33:59

Time On Btm: 2015.10.17 @ 23:00:30

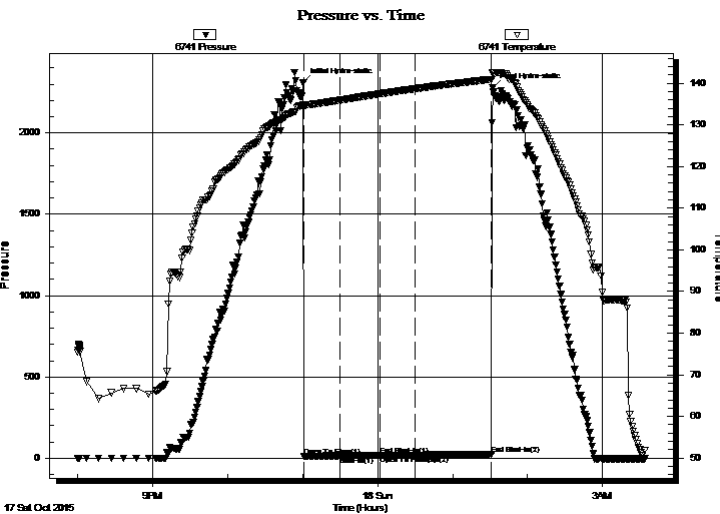
Time Off Btm: 2015.10.18 @ 01:32:00

TEST COMMENT: 30-IF- Blow built to 1/4"

30-ISI- No return

30-FF- No blow

60-FSI- No return



## PRESSURE SUMMARY

Time (Min.)	Pressure (psig)	Temp (deg F)	Annotation
0	2311.44	134.74	Initial Hydro-static
1	12.82	134.11	Open To Flow (1)
30	14.77	135.94	Shut-In(1)
61	18.76	137.44	End Shut-In(1)
62	19.05	137.46	Open To Flow (2)
89	19.99	138.68	Shut-In(2)
151	22.24	140.97	End Shut-In(2)
152	2278.64	142.61	Final Hydro-static

## Recovery

Length (ft)	Description	Volume (bbl)
2.00	MUD 100%M	0.03

\* Recovery from multiple tests

## Gas Rates

Choke (inches)	Pressure (psig)	Gas Rate (Mcf/d)





**TRILOBITE TESTING, INC**

# DRILL STEM TEST REPORT

Coral Production Corp  
 1600 Stout st STE 1500  
 Denver CO 80202  
 ATTN: Tim Lauer

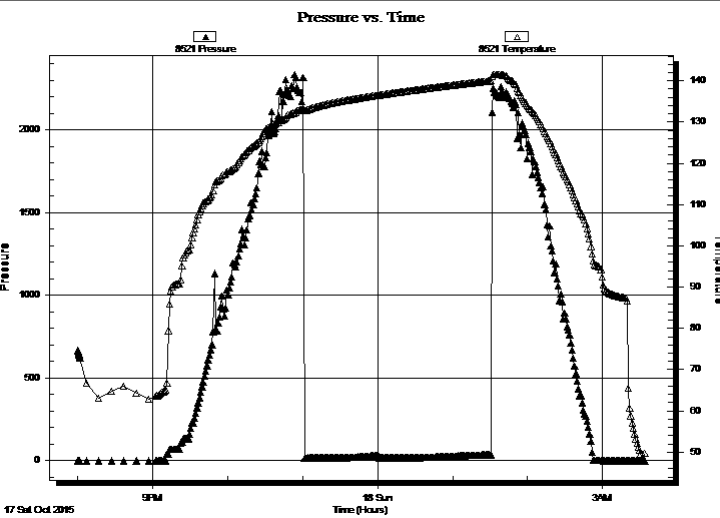
**Bammes-Brunswig #33-05D**  
**5-2S-41w Cheyenne,KS**  
 Job Ticket: 64951      **DST#: 3**  
 Test Start: 2015.10.17 @ 20:00:00

## GENERAL INFORMATION:

Formation: **LKC "H - J"**  
 Deviated: No Whipstock: ft (KB)  
 Time Tool Opened: 23:01:00  
 Time Test Ended: 03:34:00  
 Interval: **4550.00 ft (KB) To 4630.00 ft (KB) (TVD)**  
 Total Depth: 4630.00 ft (KB) (TVD)  
 Hole Diameter: 7.88 inches Hole Condition: Fair  
 Test Type: Conventional Bottom Hole (Reset)  
 Tester: Robert Zodrow  
 Unit No: 66  
 Reference Elevations: 3496.00 ft (KB)  
 3486.00 ft (CF)  
 KB to GR/CF: 10.00 ft

**Serial #: 8521 Outside**  
 Press@RunDepth: psig @ 4551.00 ft (KB) Capacity: 8000.00 psig  
 Start Date: 2015.10.17 End Date: 2015.10.18 Last Calib.: 2015.10.18  
 Start Time: 20:00:05 End Time: 03:33:59 Time On Btm:  
 Time Off Btm:

TEST COMMENT: 30-IF- Blow built to 1/4"  
 30-ISI- No return  
 30-FF- No blow  
 60-FSI- No return



PRESSURE SUMMARY			
Time (Min.)	Pressure (psig)	Temp (deg F)	Annotation

Recovery		
Length (ft)	Description	Volume (bbl)
2.00	MUD 100%M	0.03

\* Recovery from multiple tests

Gas Rates			
	Choke (inches)	Pressure (psig)	Gas Rate (Mcf/d)



**TRILOBITE  
TESTING, INC**

# DRILL STEM TEST REPORT

**TOOL DIAGRAM**

Coral Production Corp

**Bammes-Brunswig #33-05D**

1600 Stout st STE 1500  
Denver CO 80202

**5-2S-41w Cheyenne,KS**

Job Ticket: 64951

**DST#: 3**

ATTN: Tim Lauer

Test Start: 2015.10.17 @ 20:00:00

## Tool Information

Drill Pipe:	Length: 4533.00 ft	Diameter: 3.80 inches	Volume: 63.59 bbl	Tool Weight: 2500.00 lb
Heavy Wt. Pipe:	Length: 0.00 ft	Diameter: 0.00 inches	Volume: 0.00 bbl	Weight set on Packer: 25000.00 lb
Drill Collar:	Length: 0.00 ft	Diameter: 0.00 inches	Volume: 0.00 bbl	Weight to Pull Loose: 66000.00 lb
			<u>Total Volume: 63.59 bbl</u>	Tool Chased ft
Drill Pipe Above KB:	2.00 ft			String Weight: Initial 50000.00 lb
Depth to Top Packer:	4550.00 ft			Final 50000.00 lb
Depth to Bottom Packer:	ft			
Interval between Packers:	80.00 ft			
Tool Length:	99.00 ft			
Number of Packers:	2	Diameter: 6.75 inches		

Tool Comments:

## Tool Description

Tool Description	Length (ft)	Serial No.	Position	Depth (ft)	Accum. Lengths
Shut In Tool	5.00			4536.00	
Hydraulic tool	5.00			4541.00	
Packer	5.00			4546.00	19.00 Bottom Of Top Packer
Packer	4.00			4550.00	
Stubb	1.00			4551.00	
Recorder	0.00	6741	Inside	4551.00	
Recorder	0.00	8521	Outside	4551.00	
Perforations	11.00			4562.00	
Change Over Sub	1.00			4563.00	
Drill Pipe	63.00			4626.00	
Change Over Sub	1.00			4627.00	
Bullnose	3.00			4630.00	80.00 Bottom Packers & Anchor

**Total Tool Length: 99.00**



**TRILOBITE  
TESTING, INC**

# DRILL STEM TEST REPORT

**FLUID SUMMARY**

Coral Production Corp

**Bammes-Brunswig #33-05D**

1600 Stout st STE 1500  
Denver CO 80202

**5-2S-41w Cheyenne,KS**

Job Ticket: 64951

**DST#: 3**

ATTN: Tim Lauer

Test Start: 2015.10.17 @ 20:00:00

## Mud and Cushion Information

Mud Type: Gel Chem

Cushion Type:

Oil API:

deg API

Mud Weight: 9.00 lb/gal

Cushion Length:

ft

Water Salinity:

ppm

Viscosity: 75.00 sec/qt

Cushion Volume:

bbbl

Water Loss: 9.37 in<sup>3</sup>

Gas Cushion Type:

Resistivity: 0.00 ohm.m

Gas Cushion Pressure:

psig

Salinity: 500.00 ppm

Filter Cake: 1.00 inches

## Recovery Information

Recovery Table

Length ft	Description	Volume bbl
2.00	MUD 100%M	0.028

Total Length: 2.00 ft      Total Volume: 0.028 bbl

Num Fluid Samples: 0

Num Gas Bombs: 0

Serial #:

Laboratory Name:

Laboratory Location:

Recovery Comments:

Serial #: 6741

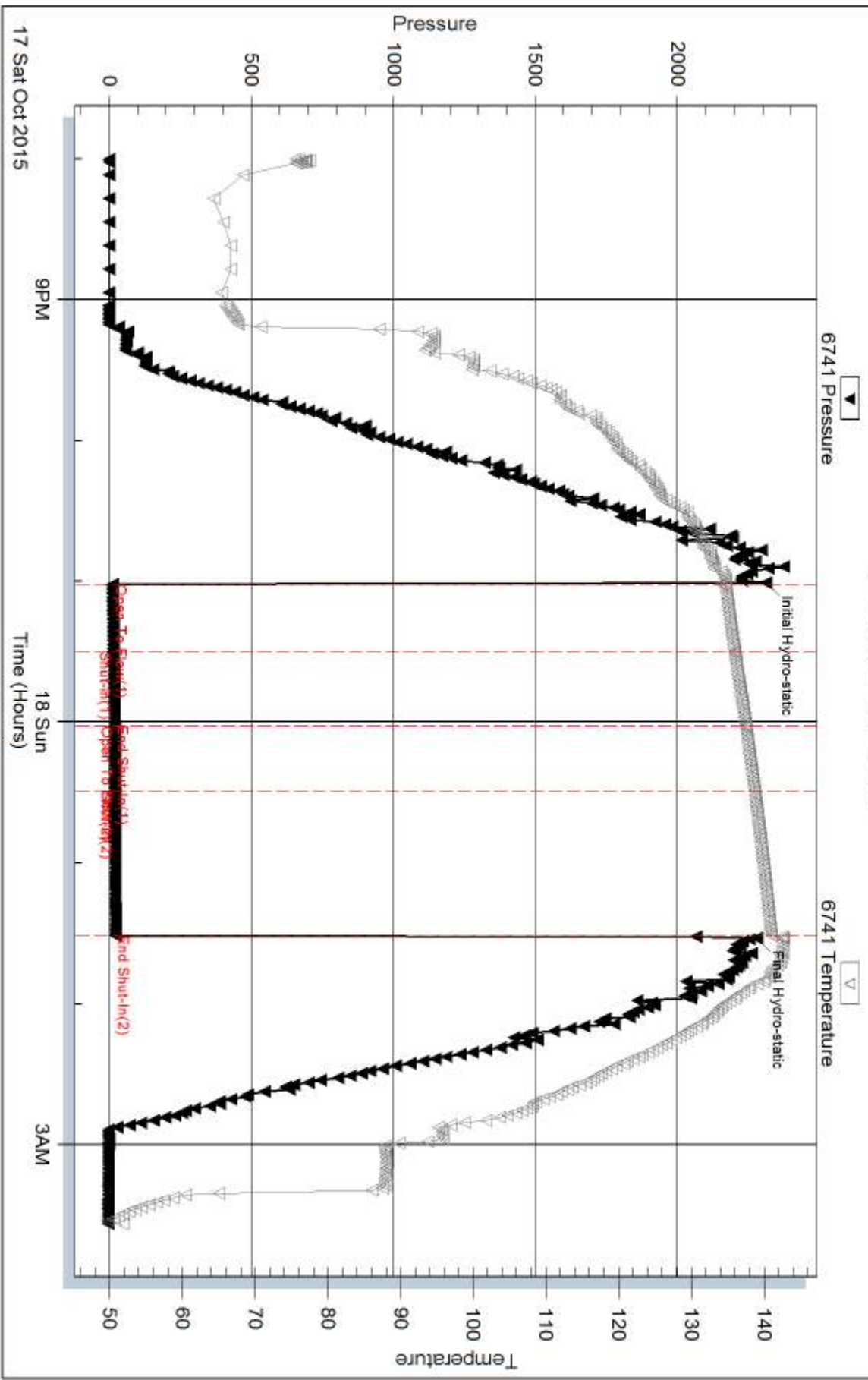
Inside

Coral Production Corp

5-2S-41w Cheyenne,KS

DST Test Number: 3

### Pressure vs. Time



Trilobite Testing, Inc

Ref. No: 64951

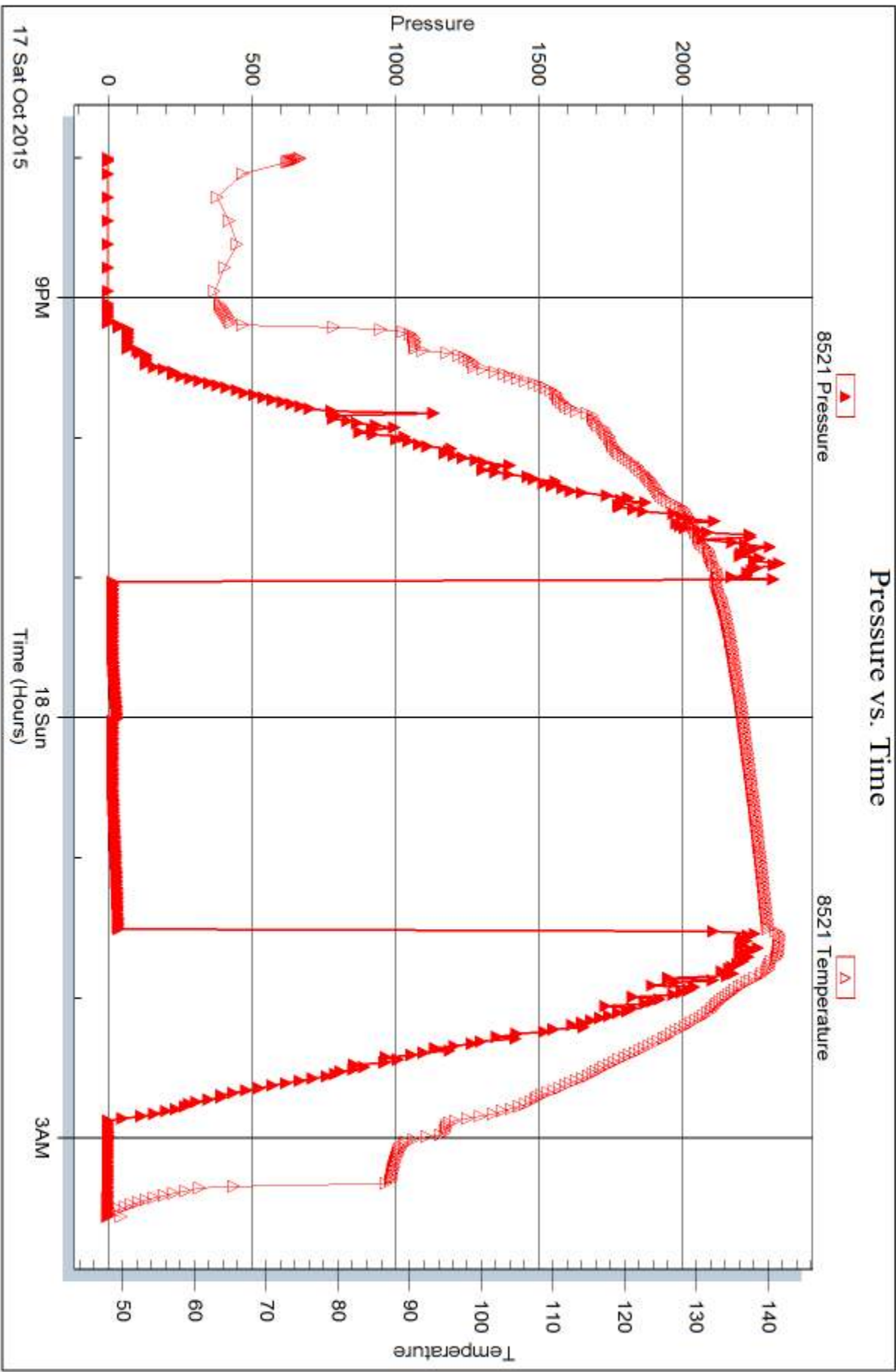
Printed: 2015.10.26 @ 09:40:11

Serial #: 8521

Outside Coral Production Corp

5-2S-41w Cheyenne,KS

DST Test Number: 3





## DRILL STEM TEST REPORT

Prepared For: **Coral Production Corp**

1600 Stout st STE 1500  
Denver CO 80202

ATTN: Tim Lauer

**5-2S-41w Cheyenne,KS**

**Bammes-Brunswig #33-05D**

Start Date: 2015.10.18 @ 19:00:00

End Date: 2015.10.19 @ 02:30:00

Job Ticket #: 64952                      DST #: 4

Trilobite Testing, Inc  
1515 Commerce Parkway Hays, KS 67601  
ph: 785-625-4778 fax: 785-625-5620

Printed: 2015.10.26 @ 09:39:43

Coral Production Corp

Bammes-Brunswig #33-05D

5-2S-41w Cheyenne,KS

DST # 4

LKC "K-L"

2015.10.18



**TRILOBITE  
TESTING, INC**

# DRILL STEM TEST REPORT

Coral Production Corp

**Bammes-Brunswig #33-05D**

1600 Stout st STE 1500  
Denver CO 80202

**5-2S-41w Cheyenne,KS**

ATTN: Tim Lauer

Job Ticket: 64952

**DST#: 4**

Test Start: 2015.10.18 @ 19:00:00

## GENERAL INFORMATION:

Formation: **LKC "K - L"**

Deviated: No Whipstock: ft (KB)

Time Tool Opened: 21:54:00

Time Test Ended: 02:30:00

Test Type: Conventional Bottom Hole (Reset)

Tester: Robert Zodrow

Unit No: 66

**Interval: 4666.00 ft (KB) To 4730.00 ft (KB) (TVD)**

Reference Elevations: 3496.00 ft (KB)

Total Depth: 4730.00 ft (KB) (TVD)

3486.00 ft (CF)

Hole Diameter: 7.88 inches Hole Condition: Fair

KB to GR/CF: 10.00 ft

**Serial #: 6741**

**Inside**

Press@RunDepth: 15.62 psig @ 4667.00 ft (KB)

Capacity: 8000.00 psig

Start Date: 2015.10.18

End Date:

2015.10.19

Last Calib.: 2015.10.19

Start Time: 19:00:05

End Time:

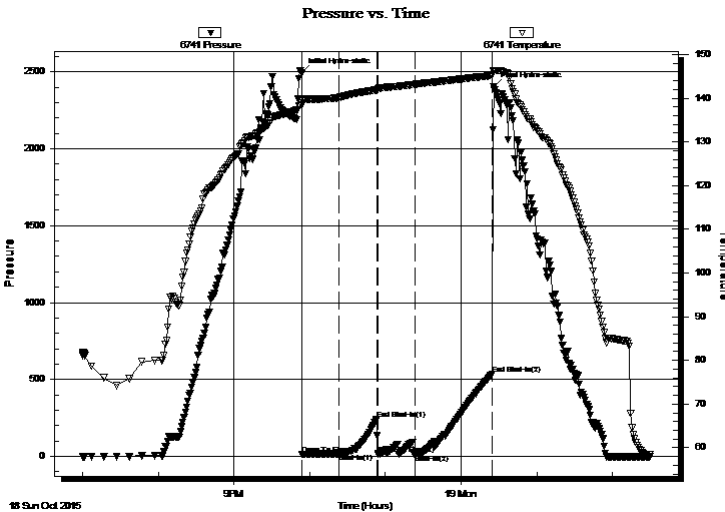
02:29:59

Time On Btm: 2015.10.18 @ 21:53:30

Time Off Btm: 2015.10.19 @ 00:26:00

**TEST COMMENT:** 30-IF- Surface blow died in 18 mins  
30-ISI- No return  
30-FF- No blow  
60-FSI- No return

## PRESSURE SUMMARY



Time (Min.)	Pressure (psig)	Temp (deg F)	Annotation
0	2492.98	138.42	Initial Hydro-static
1	12.81	138.83	Open To Flow (1)
30	16.67	140.15	Shut-In(1)
60	241.94	141.87	End Shut-In(1)
61	14.45	142.08	Open To Flow (2)
90	15.62	143.16	Shut-In(2)
151	532.72	145.18	End Shut-In(2)
153	2406.21	146.30	Final Hydro-static

## Recovery

Length (ft)	Description	Volume (bbl)
5.00	MUD 100%M	0.07

\* Recovery from multiple tests

## Gas Rates

	Choke (inches)	Pressure (psig)	Gas Rate (Mcf/d)



**TRILOBITE TESTING, INC**

# DRILL STEM TEST REPORT

Coral Production Corp  
 1600 Stout st STE 1500  
 Denver CO 80202  
 ATTN: Tim Lauer

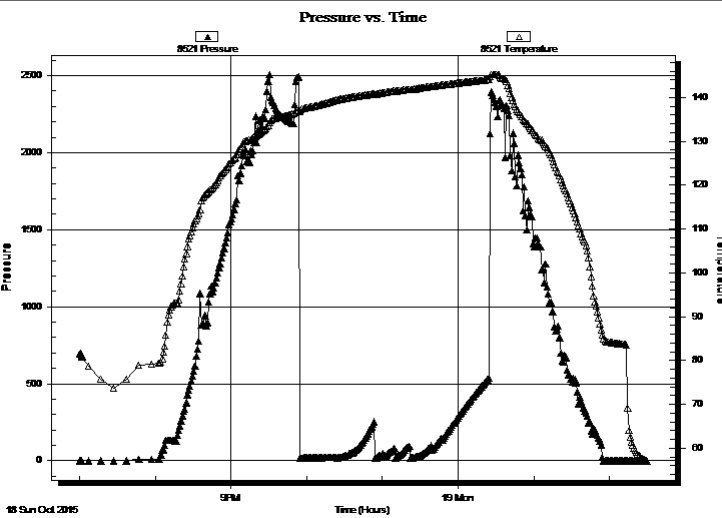
**Bammes-Brunswig #33-05D**  
**5-2S-41w Cheyenne,KS**  
 Job Ticket: 64952      **DST#: 4**  
 Test Start: 2015.10.18 @ 19:00:00

## GENERAL INFORMATION:

Formation:	<b>LKC " K - L "</b>				
Deviated:	No Whipstock:	ft (KB)	Test Type:	Conventional Bottom Hole (Reset)	
Time Tool Opened:	21:54:00		Tester:	Robert Zodrow	
Time Test Ended:	02:30:00		Unit No:	66	
<b>Interval:</b>	<b>4666.00 ft (KB) To 4730.00 ft (KB) (TVD)</b>		Reference Elevations:	3496.00 ft (KB)	
Total Depth:	4730.00 ft (KB) (TVD)			3486.00 ft (CF)	
Hole Diameter:	7.88 inches	Hole Condition: Fair	KB to GR/CF:	10.00 ft	

<b>Serial #: 8521</b>	<b>Outside</b>				
Press@RunDepth:	psig @	4667.00 ft (KB)	Capacity:	8000.00 psig	
Start Date:	2015.10.18	End Date:	2015.10.19	Last Calib.:	2015.10.19
Start Time:	19:00:05	End Time:	02:29:59	Time On Btm:	
				Time Off Btm:	

TEST COMMENT: 30-IF- Surface blow died in 18 mins  
 30-ISI- No return  
 30-FF- No blow  
 60-FSI- No return



## PRESSURE SUMMARY

Time (Min.)	Pressure (psig)	Temp (deg F)	Annotation

## Recovery

Length (ft)	Description	Volume (bbl)
5.00	MUD 100%M	0.07

\* Recovery from multiple tests

## Gas Rates

Choke (inches)	Pressure (psig)	Gas Rate (Mcf/d)





**TRILOBITE  
TESTING, INC**

# DRILL STEM TEST REPORT

**TOOL DIAGRAM**

Coral Production Corp

**Bammes-Brunswig #33-05D**

1600 Stout st STE 1500  
Denver CO 80202

**5-2S-41w Cheyenne,KS**

Job Ticket: 64952

**DST#: 4**

ATTN: Tim Lauer

Test Start: 2015.10.18 @ 19:00:00

## Tool Information

Drill Pipe:	Length: 4657.00 ft	Diameter: 3.80 inches	Volume: 65.33 bbl	Tool Weight: 2500.00 lb
Heavy Wt. Pipe:	Length: 0.00 ft	Diameter: 0.00 inches	Volume: 0.00 bbl	Weight set on Packer: 25000.00 lb
Drill Collar:	Length: 0.00 ft	Diameter: 0.00 inches	Volume: 0.00 bbl	Weight to Pull Loose: 82000.00 lb
			<u>Total Volume: 65.33 bbl</u>	Tool Chased ft
Drill Pipe Above KB:	10.00 ft			String Weight: Initial 54000.00 lb
Depth to Top Packer:	4666.00 ft			Final 54000.00 lb
Depth to Bottom Packer:	ft			
Interval between Packers:	64.00 ft			
Tool Length:	83.00 ft			
Number of Packers:	2	Diameter: 6.75 inches		

Tool Comments:

Tool Description	Length (ft)	Serial No.	Position	Depth (ft)	Accum. Lengths
------------------	-------------	------------	----------	------------	----------------

Shut In Tool	5.00			4652.00	
Hydraulic tool	5.00			4657.00	
Packer	5.00			4662.00	19.00 Bottom Of Top Packer
Packer	4.00			4666.00	
Stubb	1.00			4667.00	
Recorder	0.00	6741	Inside	4667.00	
Recorder	0.00	8521	Outside	4667.00	
Perforations	27.00			4694.00	
Change Over Sub	1.00			4695.00	
Drill Pipe	31.00			4726.00	
Change Over Sub	1.00			4727.00	
Bullnose	3.00			4730.00	64.00 Bottom Packers & Anchor

**Total Tool Length: 83.00**



**TRILOBITE  
TESTING, INC**

# DRILL STEM TEST REPORT

**FLUID SUMMARY**

Coral Production Corp

**Bammes-Brunswig #33-05D**

1600 Stout st STE 1500  
Denver CO 80202

**5-2S-41w Cheyenne,KS**

Job Ticket: 64952

**DST#: 4**

ATTN: Tim Lauer

Test Start: 2015.10.18 @ 19:00:00

## Mud and Cushion Information

Mud Type: Gel Chem

Cushion Type:

Oil API:

deg API

Mud Weight: 9.00 lb/gal

Cushion Length:

ft

Water Salinity:

ppm

Viscosity: 54.00 sec/qt

Cushion Volume:

bbbl

Water Loss: 8.97 in<sup>3</sup>

Gas Cushion Type:

Resistivity: 0.00 ohm.m

Gas Cushion Pressure:

psig

Salinity: 800.00 ppm

Filter Cake: 1.00 inches

## Recovery Information

Recovery Table

Length ft	Description	Volume bbl
5.00	MUD 100%M	0.070

Total Length: 5.00 ft      Total Volume: 0.070 bbl

Num Fluid Samples: 0

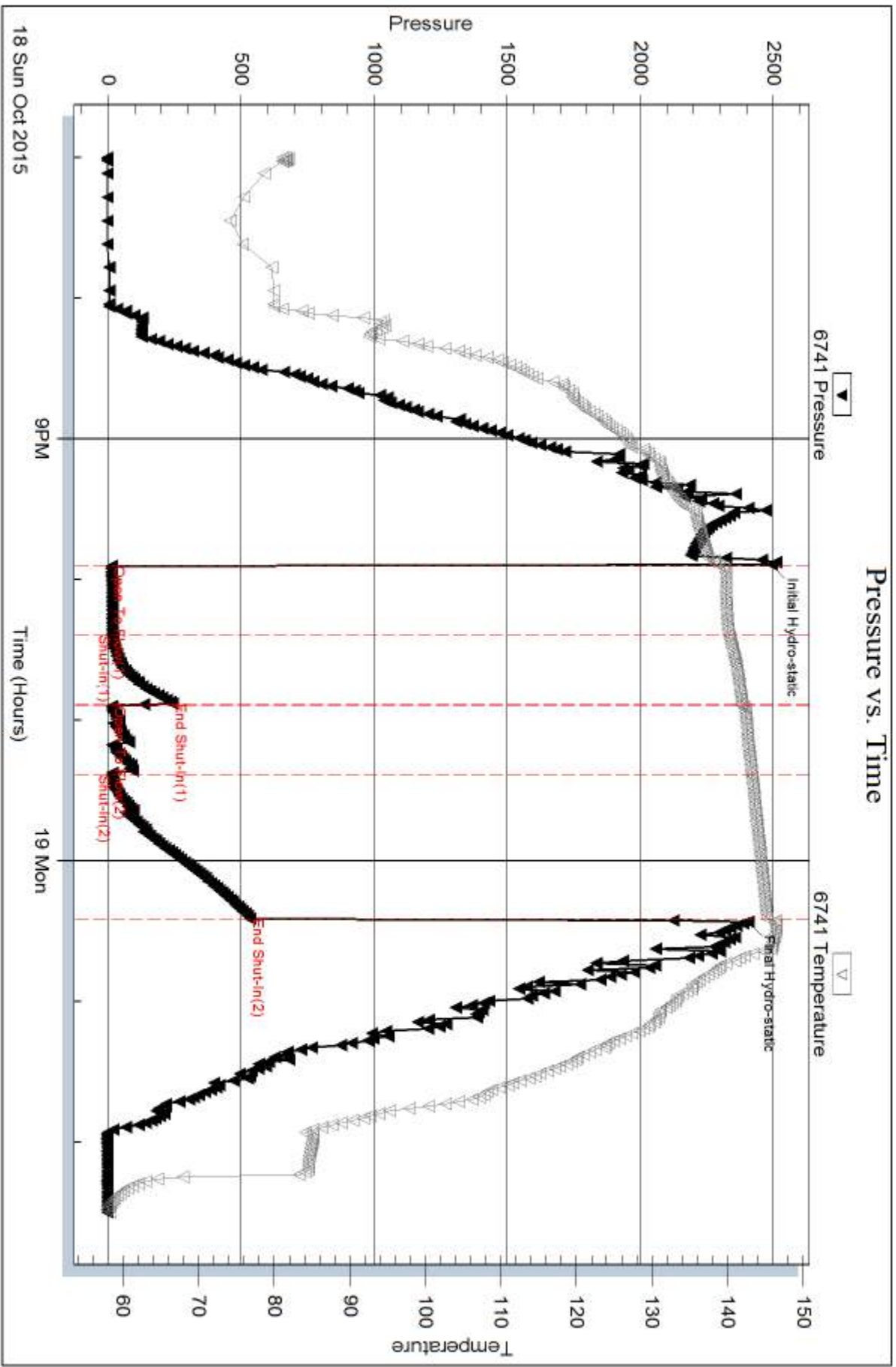
Num Gas Bombs: 0

Serial #:

Laboratory Name:

Laboratory Location:

Recovery Comments:

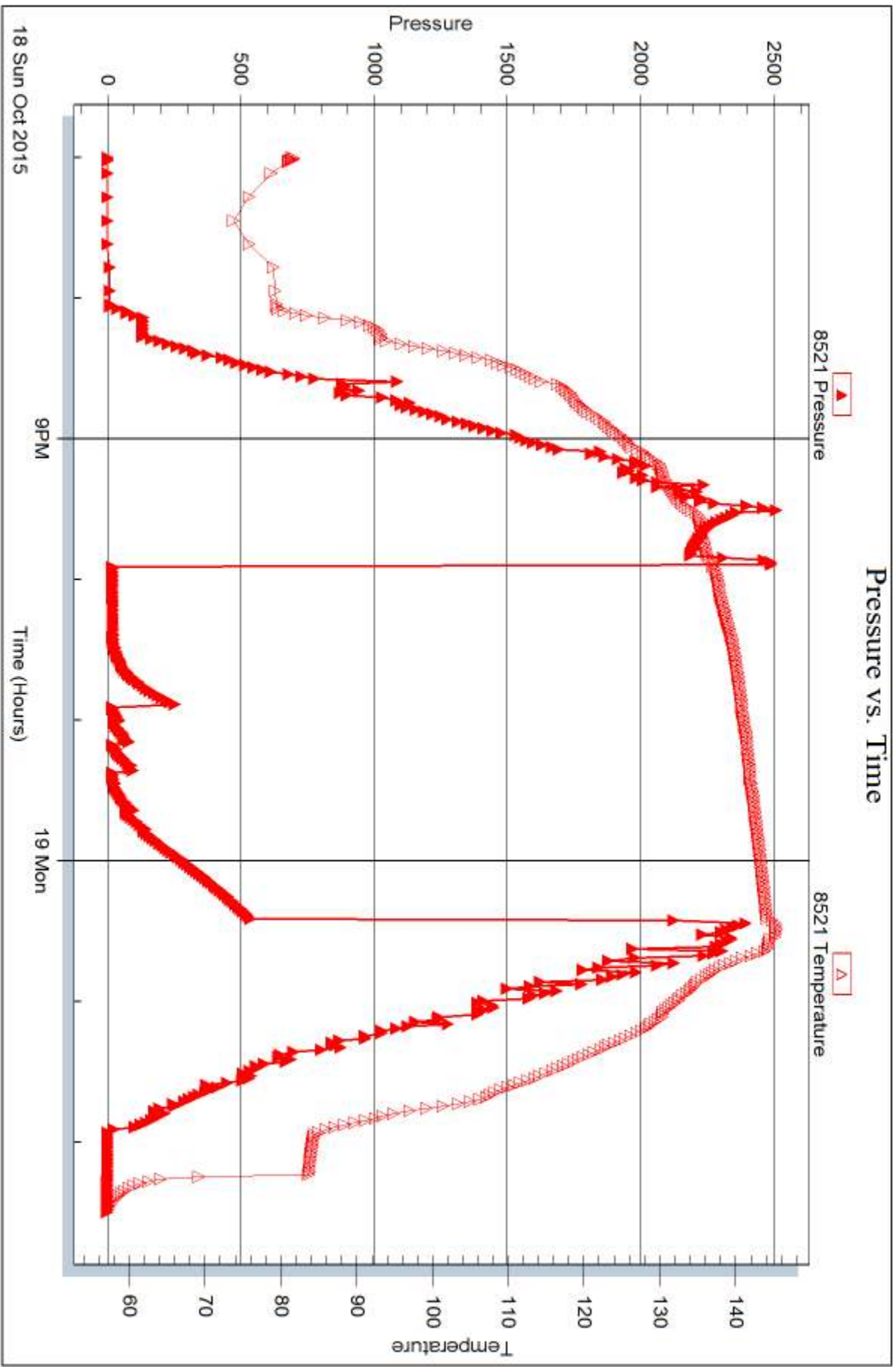


Serial #: 8521

Outside Coral Production Corp

5-2S-41w Cheyenne, KS

DST Test Number: 4



Trilobite Testing, Inc

Ref. No: 64952

Printed: 2015.10.26 @ 09:39:44



## DRILL STEM TEST REPORT

Prepared For: **Coral Production Corp**

1600 Stout st STE 1500  
Denver CO 80202

ATTN: Tim Lauer

**5-2S-41w Cheyenne,KS**

**Bammes-Brunswig #33-05D**

Start Date: 2015.10.19 @ 18:10:00

End Date: 2015.10.20 @ 01:39:00

Job Ticket #: 64953                      DST #: 5

Trilobite Testing, Inc  
1515 Commerce Parkway Hays, KS 67601  
ph: 785-625-4778 fax: 785-625-5620

Printed: 2015.10.26 @ 09:39:06



**TRILOBITE  
TESTING, INC**

# DRILL STEM TEST REPORT

Coral Production Corp

1600 Stout st STE 1500  
Denver CO 80202

ATTN: Tim Lauer

**Bammes-Brunswig #33-05D**

**5-2S-41w Cheyenne,KS**

Job Ticket: 64953

**DST#: 5**

Test Start: 2015.10.19 @ 18:10:00

## GENERAL INFORMATION:

Formation: **Marmaton -- Pawnee**

Deviated: No Whipstock: ft (KB)

Time Tool Opened: 20:50:30

Time Test Ended: 01:39:00

Test Type: Conventional Bottom Hole (Reset)

Tester: Robert Zodrow

Unit No: 66

**Interval: 4793.00 ft (KB) To 4840.00 ft (KB) (TVD)**

Reference Elevations: 3496.00 ft (KB)

Total Depth: 4840.00 ft (KB) (TVD)

3486.00 ft (CF)

Hole Diameter: 7.88 inches Hole Condition: Fair

KB to GR/CF: 10.00 ft

**Serial #: 6741**

**Inside**

Press@RunDepth: 13.05 psig @ 4794.00 ft (KB)

Capacity: 8000.00 psig

Start Date: 2015.10.19

End Date:

2015.10.20

Last Calib.:

2015.10.20

Start Time: 18:10:05

End Time:

01:38:59

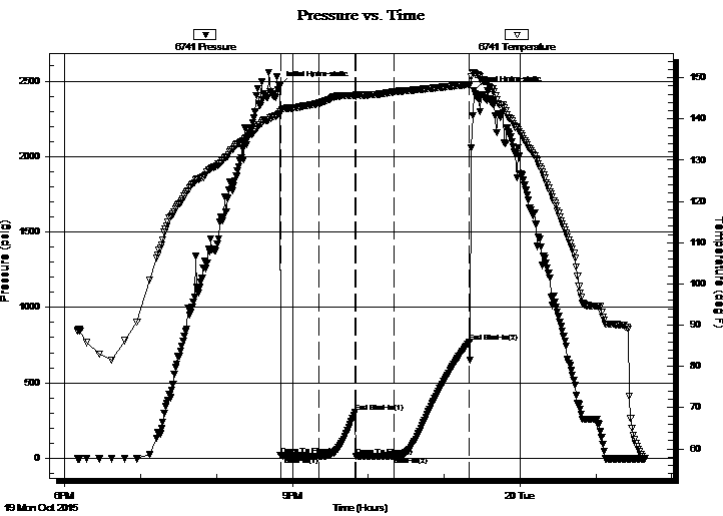
Time On Btm:

2015.10.19 @ 20:50:00

Time Off Btm:

2015.10.19 @ 23:23:30

**TEST COMMENT:** 30-ISI- Blow built to 1/4" died back to surface  
30-ISI- no return  
30-FSI- No blow  
60-FSI- No return



## PRESSURE SUMMARY

Time (Min.)	Pressure (psig)	Temp (deg F)	Annotation
0	2467.26	141.32	Initial Hydro-static
1	18.49	141.63	Open To Flow (1)
31	14.10	143.80	Shut-In(1)
60	305.16	145.73	End Shut-In(1)
60	12.56	145.56	Open To Flow (2)
91	13.05	146.61	Shut-In(2)
150	772.49	148.38	End Shut-In(2)
154	2438.82	151.22	Final Hydro-static

## Recovery

Length (ft)	Description	Volume (bbl)
2.00	MUD 100%M oil spots in tool	0.03

\* Recovery from multiple tests

## Gas Rates

Choke (inches)	Pressure (psig)	Gas Rate (Mcf/d)



# TRILOBITE TESTING, INC

## DRILL STEM TEST REPORT

Coral Production Corp  
 1600 Stout st STE 1500  
 Denver CO 80202  
 ATTN: Tim Lauer

**Bammes-Brunswig #33-05D**  
**5-2S-41w Cheyenne,KS**  
 Job Ticket: 64953 **DST#: 5**  
 Test Start: 2015.10.19 @ 18:10:00

### GENERAL INFORMATION:

Formation: **Marmaton -- Pawnee**

Deviated: No Whipstock: ft (KB)

Time Tool Opened: 20:50:30

Time Test Ended: 01:39:00

Test Type: Conventional Bottom Hole (Reset)

Tester: Robert Zodrow

Unit No: 66

Interval: **4793.00 ft (KB) To 4840.00 ft (KB) (TVD)**

Total Depth: 4840.00 ft (KB) (TVD)

Hole Diameter: 7.88 inches Hole Condition: Fair

Reference Elevations: 3496.00 ft (KB)

3486.00 ft (CF)

KB to GR/CF: 10.00 ft

### Serial #: 8521

Outside

Press@RunDepth: psig @ 4794.00 ft (KB)

Start Date: 2015.10.19

End Date:

2015.10.20

Start Time: 18:10:05

End Time:

01:38:59

Capacity: 8000.00 psig

Last Calib.: 2015.10.20

Time On Btm:

Time Off Btm:

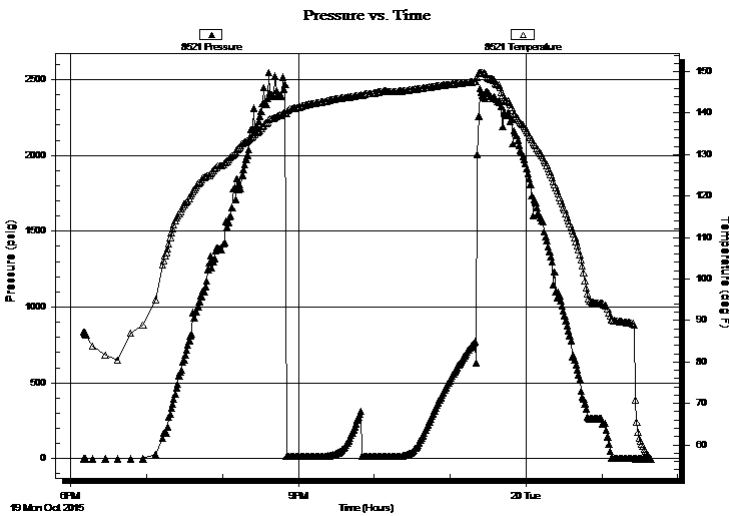
TEST COMMENT: 30-IS- Blow built to 1/4" died back to surface

30-IS- no return

30-FSI- No blow

60-FSI- No return

### PRESSURE SUMMARY



Time (Min.)	Pressure (psig)	Temp (deg F)	Annotation

### Recovery

Length (ft)	Description	Volume (bbl)
2.00	MUD 100%M oil spots in tool	0.03

### Gas Rates

Choke (inches)	Pressure (psig)	Gas Rate (Mcf/d)

\* Recovery from multiple tests



**TRILOBITE  
TESTING, INC**

# DRILL STEM TEST REPORT

**TOOL DIAGRAM**

Coral Production Corp

**Bammes-Brunswig #33-05D**

1600 Stout st STE 1500  
Denver CO 80202

**5-2S-41w Cheyenne,KS**

Job Ticket: 64953

**DST#: 5**

ATTN: Tim Lauer

Test Start: 2015.10.19 @ 18:10:00

## Tool Information

Drill Pipe:	Length: 4782.00 ft	Diameter: 3.80 inches	Volume: 67.08 bbl	Tool Weight: 2500.00 lb
Heavy Wt. Pipe:	Length: 0.00 ft	Diameter: 0.00 inches	Volume: 0.00 bbl	Weight set on Packer: 25000.00 lb
Drill Collar:	Length: 0.00 ft	Diameter: 0.00 inches	Volume: 0.00 bbl	Weight to Pull Loose: 80000.00 lb
			<u>Total Volume: 67.08 bbl</u>	Tool Chased ft
Drill Pipe Above KB:	8.00 ft			String Weight: Initial 54000.00 lb
Depth to Top Packer:	4793.00 ft			Final 54000.00 lb
Depth to Bottom Packer:	ft			
Interval between Packers:	47.00 ft			
Tool Length:	66.00 ft			
Number of Packers:	2	Diameter: 6.75 inches		

Tool Comments:

Tool Description	Length (ft)	Serial No.	Position	Depth (ft)	Accum. Lengths
------------------	-------------	------------	----------	------------	----------------

Shut In Tool	5.00			4779.00	
Hydraulic tool	5.00			4784.00	
Packer	5.00			4789.00	19.00 Bottom Of Top Packer
Packer	4.00			4793.00	
Stubb	1.00			4794.00	
Recorder	0.00	6741	Inside	4794.00	
Recorder	0.00	8521	Outside	4794.00	
Perforations	10.00			4804.00	
Change Over Sub	1.00			4805.00	
Drill Pipe	31.00			4836.00	
Change Over Sub	1.00			4837.00	
Bullnose	3.00			4840.00	47.00 Bottom Packers & Anchor

**Total Tool Length: 66.00**





**TRILOBITE  
TESTING, INC**

# DRILL STEM TEST REPORT

**FLUID SUMMARY**

Coral Production Corp

**Bammes-Brunswig #33-05D**

1600 Stout st STE 1500  
Denver CO 80202

**5-2S-41w Cheyenne,KS**

Job Ticket: 64953

**DST#: 5**

ATTN: Tim Lauer

Test Start: 2015.10.19 @ 18:10:00

## Mud and Cushion Information

Mud Type: Gel Chem

Cushion Type:

Oil API:

deg API

Mud Weight: 9.00 lb/gal

Cushion Length:

ft

Water Salinity:

ppm

Viscosity: 52.00 sec/qt

Cushion Volume:

bbbl

Water Loss: 7.98 in<sup>3</sup>

Gas Cushion Type:

Resistivity: 0.00 ohm.m

Gas Cushion Pressure:

psig

Salinity: 500.00 ppm

Filter Cake: 1.00 inches

## Recovery Information

Recovery Table

Length ft	Description	Volume bbl
2.00	MUD 100%M oil spots in tool	0.028

Total Length: 2.00 ft      Total Volume: 0.028 bbl

Num Fluid Samples: 0

Num Gas Bombs: 0

Serial #:

Laboratory Name:

Laboratory Location:

Recovery Comments:

Serial #: 6741

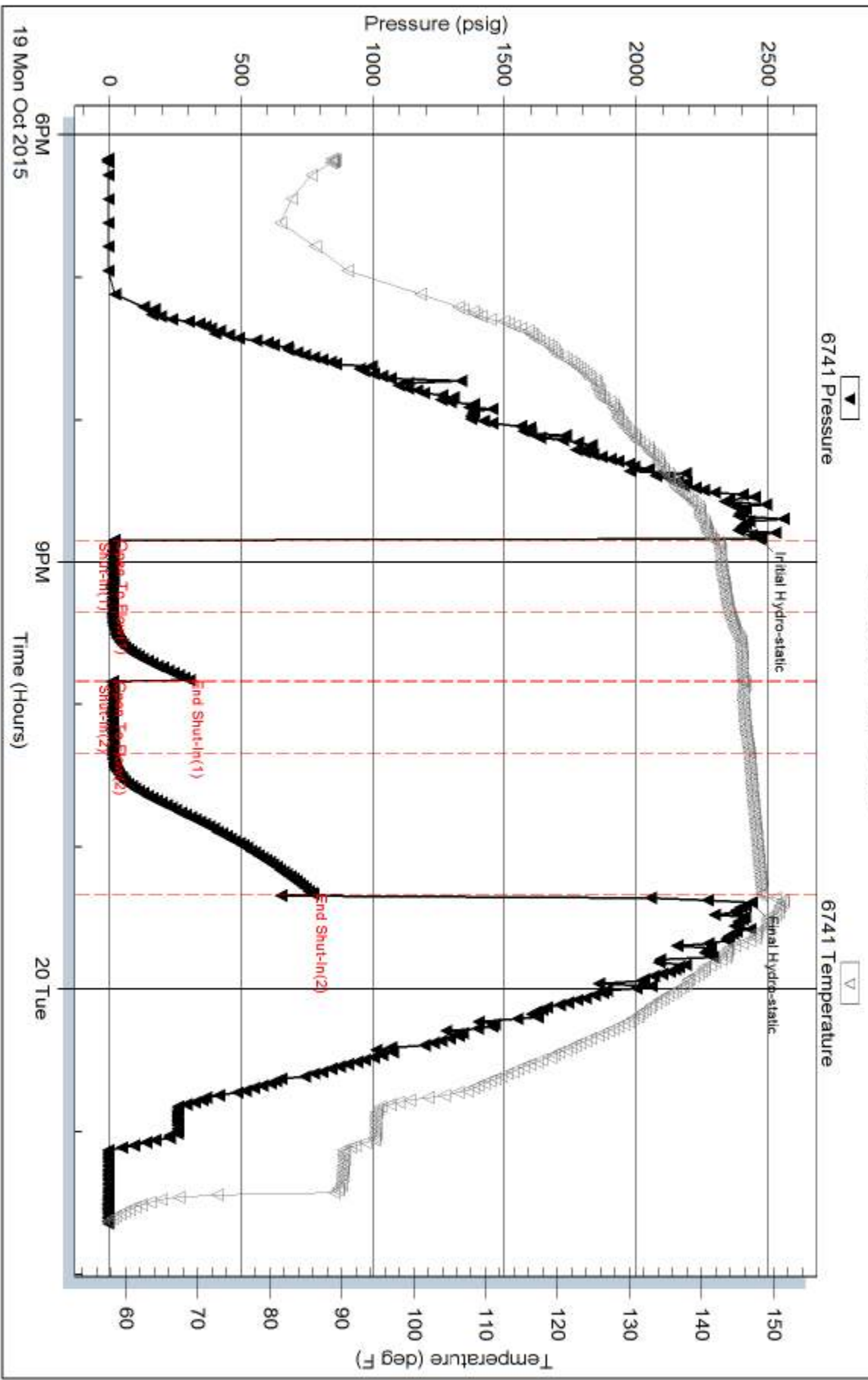
Inside

Coral Production Corp

5-2S-41w Cheyenne,KS

DST Test Number: 5

### Pressure vs. Time



Trilobite Testing, Inc

Ref. No: 64953

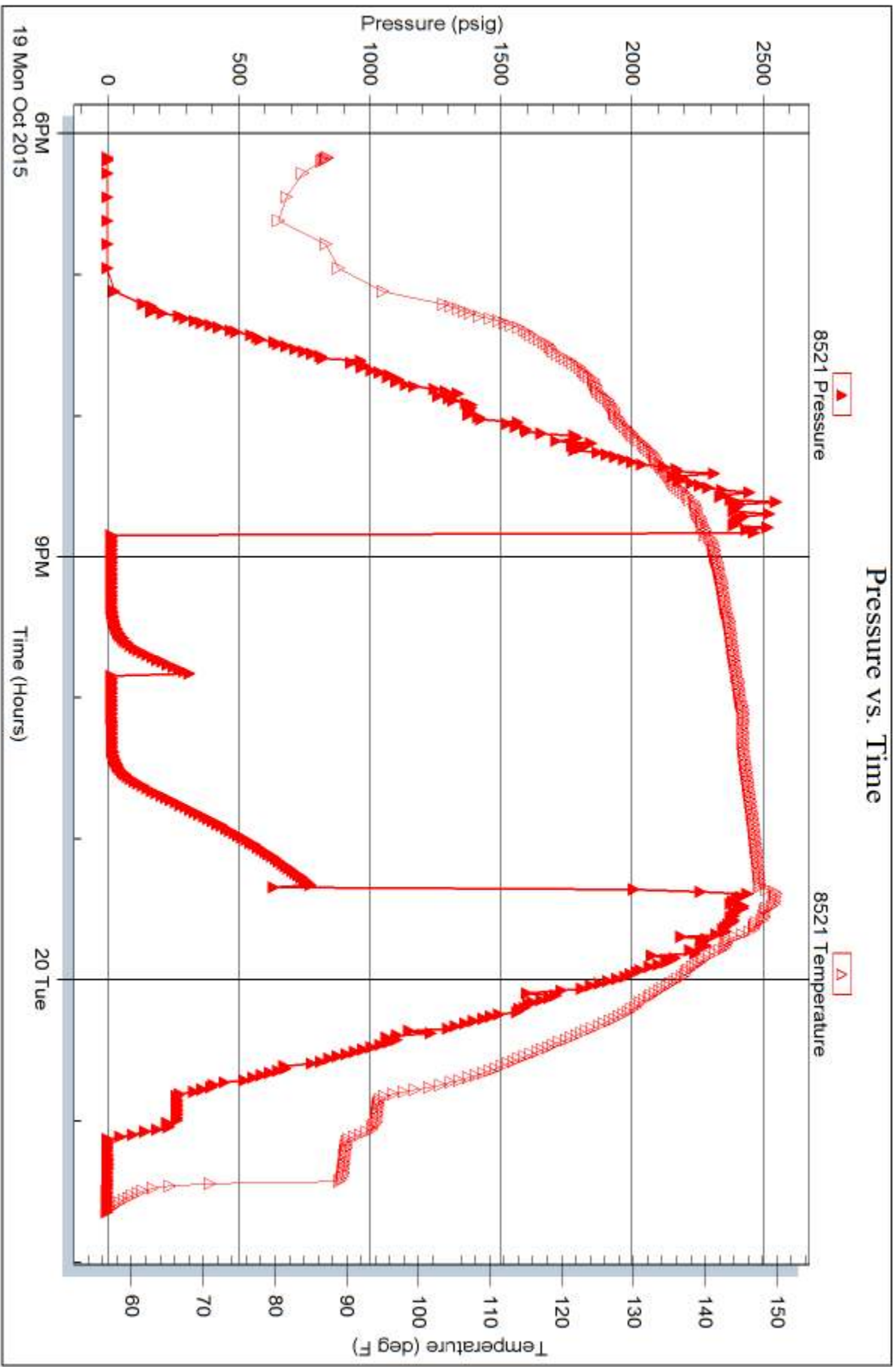
Printed: 2015.10.26 @ 09:39:07

Serial #: 8521

Outside Coral Production Corp

5-2S-41w Cheyenne,KS

DST Test Number: 5





# TRILOBITE TESTING INC.

1515 Commerce Parkway • Hays, Kansas 67601

## Test Ticket

NO. 62824

Well Name & No. Bammes - Bruns wig 33-050 Test No. 1 Date 10-15-2015  
 Company Coral Production Corp Elevation 3496 KB 3486 GL  
 Address 1600 Stout St STE 1500 Denver CO 80202  
 Co. Rep / Geo. Tim Lauer Rig Duke #4  
 Location: Sec. 5 Twp. 25 Rge. 41 W Co. Cheyenne State KS

Interval Tested 4042 — 4170 Zone Tested Foraker - Tarkio  
 Anchor Length 128 Drill Pipe Run 4030 Mud Wt. 9.2  
 Top Packer Depth 4038 (shale) Drill Collars Run 0 Vis 50  
 Bottom Packer Depth 4042 (shale) Wt. Pipe Run 0 WL 10.4  
 Total Depth 4170 Chlorides 700 ppm System LCM 4  
 Blow Description IF - Blow built to 8 3/4"  
ISI - No return  
FF - Blow started in 3 mins built to 9 1/2"  
FSI - No return

Rec	Feet of	%gas	%oil	%water	%mud
<u>200</u>	<u>mw</u>		<u>90</u>	<u>10</u>	
Rec	Feet of	%gas	%oil	%water	%mud
Rec	Feet of	%gas	%oil	%water	%mud
Rec	Feet of	%gas	%oil	%water	%mud

Rec Total 200 BHT 142 Gravity — API RW 340 @ 59 °F Chlorides 25,000 ppm  
 (A) Initial Hydrostatic 1998  Test 1150 T-On Location 01:30 10-15  
 (B) First Initial Flow 27  Jars — T-Started 02:30 10-15  
 (C) First Final Flow 54  Safety Joint — T-Open 05:04 10-15  
 (D) Initial Shut-In 1350  Circ Sub — T-Pulled 08:20 10-15  
 (E) Second Initial Flow 58  Hourly Standby — T-Out 10:15 10-15  
 (F) Second Final Flow 116  Mileage 178 RT 178 Comments —  
 (G) Final Shut-In 1371  Sampler —  
 (H) Final Hydrostatic 1938  Straddle —  
 Ruined Shale Packer —  
 Shale Packer X2 500  Ruined Packer —  
 Extra Packer —  Extra Copies —  
 Initial Open 30  Extra Recorder — Sub Total 0  
 Initial Shut-In 30  Day Standby — Total 1828  
 Final Flow 45  Accessibility — MP/DST Disc't —  
 Final Shut-In 90 Sub Total 1828

Approved By Tim Lauer Our Representative Robert Zecher  
 TriLOBite Testing Inc. shall not be liable for damaged of any kind of the property or personnel of the one for whom a test is made, or for any loss suffered or sustained, directly or indirectly, through the use of its equipment, or its statements or opinion concerning the results of any test, tools lost or damaged in the hole shall be paid for at cost by the party for whom the test is made.



# TRILOBITE TESTING INC.

1515 Commerce Parkway • Hays, Kansas 67601

## Test Ticket

NO. 62825

Well Name & No. Bammes - Brunswick 33-050 Test No. 2 Date 10-16-2015  
 Company Coral Production Corp Elevation 3496 KB 3486 GL  
 Address 1600 Stout St STE. 1500 Denver CO 80202  
 Co. Rep / Geo. Tim Lauer Rig Duke #4  
 Location: Sec. 5 Twp. 2S Rge. 41W Co. Cheyenne State KS

Interval Tested 4304 — 4420 Zone Tested Oread + LKC "A"  
 Anchor Length 116 Drill Pipe Run 4310 Mud Wt. 9  
 Top Packer Depth 4300 (shale) Drill Collars Run 0 Vis 70  
 Bottom Packer Depth 4304 (shale) Wt. Pipe Run 0 WL 9.2  
 Total Depth 4420 Chlorides 500 ppm System LCM 3  
 Blow Description IF - Blow built to 3/4"  
ISI - NO return  
FF - NO blow  
FSI - NO return

Rec	Feet of	%gas	%oil	%water	%mud
<u>5</u>	<u>mud</u>			<u>100</u>	
Rec	Feet of	%gas	%oil	%water	%mud
Rec	Feet of	%gas	%oil	%water	%mud
Rec	Feet of	%gas	%oil	%water	%mud
Rec	Feet of	%gas	%oil	%water	%mud

Rec Total 5 BHT 138 Gravity — API RW — @ — ° F Chlorides — ppm

(A) Initial Hydrostatic 2258  Test 1150 T-On Location 09:30 10-16  
 (B) First Initial Flow 13  Jars — T-Started 10:30 10-16  
 (C) First Final Flow 14  Safety Joint — T-Open 12:53 10-16  
 (D) Initial Shut-In 84  Circ Sub — T-Pulled 15:23 10-16  
 (E) Second Initial Flow 12  Hourly Standby — T-Out 17:36 10-16  
 (F) Second Final Flow 15  Mileage 178 RT 178 Comments —  
 (G) Final Shut-In 79  Sampler —  
 (H) Final Hydrostatic 2149  Straddle —  
 Ruined Shale Packer —  
 Ruined Packer —  
 Shale Packer x2 500  Extra Copies —  
 Extra Packer — Sub Total 0  
 Extra Recorder — Total 1828  
 Day Standby — MP/DST Disc't —  
 Accessibility —

Initial Open 30  
 Initial Shut-In 30  
 Final Flow 30  
 Final Shut-In 60

Approved By Tim J. Lauer Our Representative Robert Zedner

TriLOBite Testing Inc. shall not be liable for damaged of any kind of the property or personnel of the one for whom a test is made, or for any loss suffered or sustained, directly or indirectly, through the use of its equipment, or its statements or opinion concerning the results of any test, tools lost or damaged in the hole shall be paid for at cost by the party for whom the test is made.



# TRILOBITE TESTING INC.

1515 Commerce Parkway • Hays, Kansas 67601

## Test Ticket

NO. **64951**

Well Name & No. Bammes - Branswig 33-050 Test No. 3 Date 10-17-2015  
 Company Coral Production Corp Elevation 3496 KB 3486 GL  
 Address 1600 Stout St STE 1500 Denver CO 80202  
 Co. Rep / Geo. Tim Lauer Rig Duke #4  
 Location: Sec. 5 Twp. 25 Rge. 41 W Co. Cheyenne State KS

Interval Tested 4550 - 4630 Zone Tested LKC "H & J"  
 Anchor Length 80 Drill Pipe Run 4533 Mud Wt. 9.2  
 Top Packer Depth 4546 (shale?) Drill Collars Run 0 Vis 75  
 Bottom Packer Depth 4550 (shale?) Wt. Pipe Run 0 WL 9.4  
 Total Depth 4630 Chlorides 500 ppm System LCM 4.5  
 Blow Description IF - Blow built to 4  
ISI - NO return  
PF - NO BLOW  
FST - NO return

Rec	Feet of	%gas	%oil	%water	%mud
<u>2</u>	<u>mud</u>			<u>100</u>	
Rec	Feet of	%gas	%oil	%water	%mud
Rec	Feet of	%gas	%oil	%water	%mud
Rec	Feet of	%gas	%oil	%water	%mud
Rec	Feet of	%gas	%oil	%water	%mud

Rec Total 2 BHT 141 Gravity — API RW — @ — °F Chlorides — ppm  
 (A) Initial Hydrostatic 2311  Test 1150 T-On Location 19:00 10-17  
 (B) First Initial Flow 12  Jars — T-Started 20:00 10-17  
 (C) First Final Flow 15  Safety Joint — T-Open 23:01 10-17  
 (D) Initial Shut-In 18  Circ Sub — T-Pulled 01:31 10-18  
 (E) Second Initial Flow 19  Hourly Standby — T-Out 03:30 10-18  
 (F) Second Final Flow 20  Mileage 178 RT 178 Comments —  
 (G) Final Shut-In 22  Sampler —  
 (H) Final Hydrostatic 2278  Straddle —  
 Ruined Shale Packer —  
 Ruined Packer —  
 Extra Copies —  
 Initial Open 30  Shale Packer X 2 500 Sub Total 0  
 Initial Shut-In 30  Extra Packer — Total 1828  
 Final Flow 30  Extra Recorder — MP/DST Disc't —  
 Final Shut-In 60  Day Standby —  
 Accessibility —  
 Sub Total 1828

Approved By [Signature] Our Representative Robert Zielony

Trilobite Testing Inc. shall not be liable for damaged of any kind of the property or personnel of the one for whom a test is made, or for any loss suffered or sustained, directly or indirectly, through the use of its equipment, or its statements or opinion concerning the results of any test, tools lost or damaged in the hole shall be paid for at cost by the party for whom the test is made.



# TRILOBITE TESTING INC.

1515 Commerce Parkway • Hays, Kansas 67601

## Test Ticket

NO. **64952**

Well Name & No. Bammes - Brunswick 33-050 Test No. 4 Date 10-18-2015  
 Company Coral Production Corp Elevation 3496 KB 3486 GL  
 Address 1600 Stout St STE 1500 Denver CO 80202  
 Co. Rep / Geo. Tim Lauer Rig Duke #4  
 Location: Sec. 5 Twp. 2S Rge. 41W Co. cheyenne State KS

Interval Tested 4666 — 4730 Zone Tested LKC "K+L"  
 Anchor Length 64 Drill Pipe Run 4657 Mud Wt. 9.3  
 Top Packer Depth 4662 Drill Collars Run 0 Vis 54  
 Bottom Packer Depth 4666 Wt. Pipe Run 0 WL 9  
 Total Depth 4730 Chlorides 800 ppm System LCM 4.5  
 Blow Description IF - surface blow died in 18 mins  
ISI - NO return  
FF - NO BLOW  
FSL - NO return

Rec	Feet of	%gas	%oil	%water	%mud
<u>5</u>	<u>mud</u>			<u>100</u>	
Rec	Feet of	%gas	%oil	%water	%mud
Rec	Feet of	%gas	%oil	%water	%mud
Rec	Feet of	%gas	%oil	%water	%mud
Rec	Feet of	%gas	%oil	%water	%mud

Rec Total 5 BHT 145 Gravity — API RW — @ — °F Chlorides — ppm  
 (A) Initial Hydrostatic 2492  Test 1150 T-On Location 18:00 10-18  
 (B) First Initial Flow 12  Jars — T-Started 19:00 10-18  
 (C) First Final Flow 16  Safety Joint — T-Open 21:54 10-18  
 (D) Initial Shut-In 242  Circ Sub — T-Pulled 00:24 10-19  
 (E) Second Initial Flow 14  Hourly Standby — T-Out 02:30 10-19  
 (F) Second Final Flow 16  Mileage 178 RT 178 Comments —  
 (G) Final Shut-In 532  Sampler —  
 (H) Final Hydrostatic 2406  Straddle —  
 Ruined Shale Packer —  
 Ruined Packer —  
 Extra Copies —  
 Initial Open 30  Shale Packer 500  
 Initial Shut-In 30  Extra Packer —  
 Final Flow 30  Extra Recorder —  
 Final Shut-In 60  Day Standby —  
 Accessibility —  
 Sub Total 1828 Sub Total 1828 MP/DST Disc't —

Approved By Tim Lauer Our Representative Robert Zichow  
 Trilobite Testing Inc. shall not be liable for damaged or any kind of the property or personnel of the one for whom a test is made, or for any loss suffered or sustained, directly or indirectly, through the use of its equipment, or its statements or opinion concerning the results of any test, tools lost or damaged in the hole shall be paid for at cost by the party for whom the test is made.



# TRILOBITE TESTING INC.

1515 Commerce Parkway • Hays, Kansas 67601

## Test Ticket

NO. **64953**

Well Name & No. Bammes - Brunswick 33-05D Test No. 5 Date 10-19-2015  
 Company Coral Production Corp Elevation 3496 KB 3486 GL  
 Address 1600 Stout St STE. 1500 Denver CO 80202  
 Co. Rep / Geo. Tim Lauer Rig Duke #4  
 Location: Sec. 5 Twp. 25 Rge. 41 W Co. Cheyenne State KS

Interval Tested 4793 - 4840 Zone Tested Marmaton - Pawnee  
 Anchor Length 47 Drill Pipe Run 4782 Mud Wt. 9.3  
 Top Packer Depth 4789 (shale) Drill Collars Run 0 Vis 52  
 Bottom Packer Depth 4793 (shale) Wt. Pipe Run 0 WL 8  
 Total Depth 4840 Chlorides 500 ppm System LCM 4  
 Blow Description IF - Blow built to 4" died back to surface  
ISI - No return  
FF - No blow  
FSI - No return

Rec	Feet of	%gas	%oil	%water	%mud
<u>2</u>	<u>mud oil spots in tool</u>			<u>100</u>	
Rec	Feet of	%gas	%oil	%water	%mud
Rec	Feet of	%gas	%oil	%water	%mud
Rec	Feet of	%gas	%oil	%water	%mud
Rec	Feet of	%gas	%oil	%water	%mud

Rec Total 2 BHT 148 Gravity — API RW — @ — °F Chlorides — ppm

(A) Initial Hydrostatic <u>2467</u>	<input checked="" type="checkbox"/> Test <u>1150</u>	T-On Location <u>17:00 10-19</u>
(B) First Initial Flow <u>18</u>	<input type="checkbox"/> Jars	T-Started <u>18:10 10-19</u>
(C) First Final Flow <u>14</u>	<input type="checkbox"/> Safety Joint	T-Open <u>20:50 10-19</u>
(D) Initial Shut-In <u>305</u>	<input type="checkbox"/> Circ Sub	T-Pulled <u>23:20 10-19</u>
(E) Second Initial Flow <u>12</u>	<input type="checkbox"/> Hourly Standby	T-Out <u>01:36 10-20</u>
(F) Second Final Flow <u>13</u>	<input checked="" type="checkbox"/> Mileage <u>178 RT x 2</u>	Comments <u>Drive out</u>
(G) Final Shut-In <u>772</u>	<input type="checkbox"/> Sampler <u>356</u>	<u>Loaded tool at</u>
(H) Final Hydrostatic <u>2438</u>	<input type="checkbox"/> Straddle	<u>16:30 on 10-22-15</u>
	<input type="checkbox"/> Shale Packer <u>x 2 500</u>	<input type="checkbox"/> Ruined Shale Packer
	<input type="checkbox"/> Extra Packer	<input type="checkbox"/> Ruined Packer
	<input type="checkbox"/> Extra Recorder	<input type="checkbox"/> Extra Copies
	<input type="checkbox"/> Day Standby <u>1.5d 27h</u>	Sub Total <u>1600</u>
	<input type="checkbox"/> Accessibility	Total <u>3606</u>
	Sub Total <u>2006</u>	MP/DST Disc't

Approved By Tim Lauer Our Representative Robert Zochow  
 Trilobite Testing Inc. shall not be liable for damaged of any kind of the property or personnel of the one for whom a test is made, or for any loss suffered or sustained, directly or indirectly, through the use of its equipment, or its statements or opinion concerning the results of any test, tools lost or damaged in the hole shall be paid for at cost by the party for whom the test is made.