



DRILL STEM TEST REPORT

Prepared For: **Mull Drilling Co., Inc.**

1700 N Waterfront Pkwy
Bldg 12000
Wichita, KS 67206

ATTN: Phil Askey

Guffey Trust #1-9

S9-25s-42w Hamilton,KS

Start Date: 2015.08.31 @ 00:48:00

End Date: 2015.08.31 @ 07:59:00

Job Ticket #: 61710 DST #: 1

Trilobite Testing, Inc
1515 Commerce Parkway Hays, KS 67601
ph: 785-625-4778 fax: 785-625-5620

Printed: 2015.09.03 @ 14:37:03

Mull Drilling Co., Inc.

S9-25s-42w Hamilton,KS

Guffey Trust #1-9

DST # 1

Upper Morrow.

2015.08.31



**TRILOBITE
TESTING, INC.**

DRILL STEM TEST REPORT

Mull Drilling Co., Inc.
1700 N Waterfront Pkw y
Bldg 12000
Wichita, KS 67206
ATTN: Phil Askey

S9-25s-42w Hamilton,KS

Guffey Trust #1-9

Job Ticket: 61710 **DST#: 1**

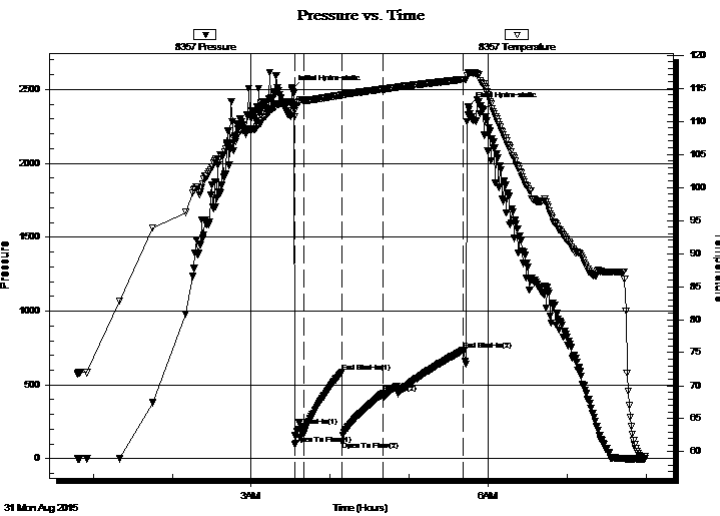
Test Start: 2015.08.31 @ 00:48:00

GENERAL INFORMATION:

Formation: **Upper Morrow.**
 Deviated: No Whipstock: ft (KB)
 Time Tool Opened: 03:33:20
 Time Test Ended: 07:59:00
 Interval: **5007.00 ft (KB) To 5080.00 ft (KB) (TVD)**
 Total Depth: 5080.00 ft (KB) (TVD)
 Hole Diameter: 7.88 inches Hole Condition: Good
 Test Type: Conventional Bottom Hole (Initial)
 Tester: Chuck Smith
 Unit No: 61
 Reference Elevations: 3595.00 ft (KB)
 3582.00 ft (CF)
 KB to GR/CF: 13.00 ft

Serial #: 8357 Inside
 Press@RunDepth: 442.97 psig @ 5008.00 ft (KB) Capacity: 8000.00 psig
 Start Date: 2015.08.31 End Date: 2015.08.31 Last Calib.: 2015.08.31
 Start Time: 00:48:02 End Time: 07:59:00 Time On Btm: 2015.08.31 @ 03:30:50
 Time Off Btm: 2015.08.31 @ 05:45:09

TEST COMMENT: 5- Surface blow throughout.
 30- No return.
 30- No blow .
 60- No return.



PRESSURE SUMMARY

Time (Min.)	Pressure (psig)	Temp (deg F)	Annotation
0	2498.68	112.68	Initial Hydro-static
3	100.27	111.64	Open To Flow (1)
9	219.22	113.17	Shut-In(1)
38	586.72	113.97	End Shut-In(1)
39	115.60	113.91	Open To Flow (2)
70	442.97	114.86	Shut-In(2)
131	734.84	116.35	End Shut-In(2)
135	2381.36	117.40	Final Hydro-static

Recovery

Length (ft)	Description	Volume (bbl)
45.00	M 100m with a couple oil spots.	0.22

Gas Rates

	Choke (inches)	Pressure (psig)	Gas Rate (Mcf/d)



**TRILOBITE
TESTING, INC**

DRILL STEM TEST REPORT

Mull Drilling Co., Inc.
1700 N Waterfront Pkw y
Bldg 12000
Wichita, KS 67206
ATTN: Phil Askey

S9-25s-42w Hamilton,KS

Guffey Trust #1-9

Job Ticket: 61710 **DST#: 1**

Test Start: 2015.08.31 @ 00:48:00

GENERAL INFORMATION:

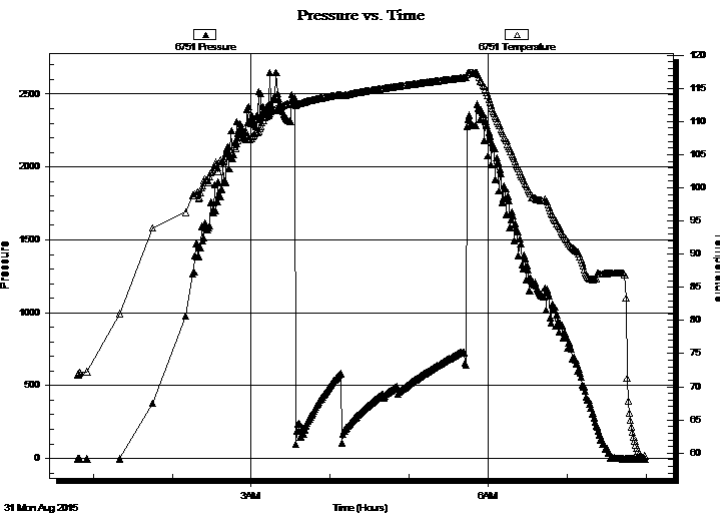
Formation: **Upper Morrow.**
 Deviated: No Whipstock: ft (KB)
 Time Tool Opened: 03:33:20
 Time Test Ended: 07:59:00
 Interval: **5007.00 ft (KB) To 5080.00 ft (KB) (TVD)**
 Total Depth: 5080.00 ft (KB) (TVD)
 Hole Diameter: 7.88 inches Hole Condition: Good
 Test Type: Conventional Bottom Hole (Initial)
 Tester: Chuck Smith
 Unit No: 61
 Reference Elevations: 3595.00 ft (KB)
 3582.00 ft (CF)
 KB to GR/CF: 13.00 ft

Serial #: 6751

Outside

Press@RunDepth: psig @ 5008.00 ft (KB) Capacity: 8000.00 psig
 Start Date: 2015.08.31 End Date: 2015.08.31 Last Calib.: 2015.08.31
 Start Time: 00:48:02 End Time: 07:59:00 Time On Btm:
 Time Off Btm:

TEST COMMENT: 5- Surface blow throughout.
 30- No return.
 30- No blow .
 60- No return.



PRESSURE SUMMARY

Time (Min.)	Pressure (psig)	Temp (deg F)	Annotation

Recovery

Length (ft)	Description	Volume (bbl)
45.00	M 100m with a couple oil spots.	0.22

Gas Rates

Choke (inches)	Pressure (psig)	Gas Rate (Mcf/d)



**TRILOBITE
TESTING, INC**

DRILL STEM TEST REPORT

TOOL DIAGRAM

Mull Drilling Co., Inc.

S9-25s-42w Hamilton,KS

1700 N Waterfront Pkwy
Bldg 12000
Wichita, KS 67206
ATTN: Phil Askey

Guffey Trust #1-9

Job Ticket: 61710

DST#: 1

Test Start: 2015.08.31 @ 00:48:00

Tool Information

Drill Pipe:	Length: 4829.00 ft	Diameter: 3.82 inches	Volume: 68.45 bbl	Tool Weight: 2300.00 lb
Heavy Wt. Pipe:	Length: 0.00 ft	Diameter: 2.25 inches	Volume: 0.00 bbl	Weight set on Packer: 22000.00 lb
Drill Collar:	Length: 182.00 ft	Diameter: 2.25 inches	Volume: 0.90 bbl	Weight to Pull Loose: 95000.00 lb
			<u>Total Volume: 69.35 bbl</u>	Tool Chased 0.00 ft
Drill Pipe Above KB:	31.50 ft			String Weight: Initial 75000.00 lb
Depth to Top Packer:	5007.00 ft			Final 75000.00 lb
Depth to Bottom Packer:	ft			
Interval between Packers:	73.00 ft			
Tool Length:	100.50 ft			
Number of Packers:	2	Diameter: 6.75 inches		

Tool Comments:

Tool Description

Tool Description	Length (ft)	Serial No.	Position	Depth (ft)	Accum. Lengths
Change Over Sub	1.00			4980.50	
Shut In Tool	5.00			4985.50	
Hydraulic tool	5.00			4990.50	
Jars	5.00			4995.50	
Safety Joint	2.50			4998.00	
Packer	5.00			5003.00	27.50 Bottom Of Top Packer
Packer	4.00			5007.00	
Stubb	1.00			5008.00	
Recorder	0.00	8357	Inside	5008.00	
Recorder	0.00	6751	Outside	5008.00	
Perforations	35.00			5043.00	
Change Over Sub	1.00			5044.00	
Drill Pipe	32.00			5076.00	
Change Over Sub	1.00			5077.00	
Bullnose	3.00			5080.00	73.00 Bottom Packers & Anchor

Total Tool Length: 100.50



**TRILOBITE
TESTING, INC**

DRILL STEM TEST REPORT

FLUID SUMMARY

Mull Drilling Co., Inc.

S9-25s-42w Hamilton,KS

1700 N Waterfront Pkw y
Bldg 12000
Wichita, KS 67206
ATTN: Phil Askey

Guffey Trust #1-9

Job Ticket: 61710

DST#: 1

Test Start: 2015.08.31 @ 00:48:00

Mud and Cushion Information

Mud Type: Gel Chem

Mud Weight: 9.00 lb/gal

Viscosity: 53.00 sec/qt

Water Loss: 11.16 in³

Resistivity: ohm.m

Salinity: 6200.00 ppm

Filter Cake: 1.00 inches

Cushion Type:

Cushion Length: ft

Cushion Volume: bbl

Gas Cushion Type:

Gas Cushion Pressure: psig

Oil API:

Water Salinity: deg API

ppm

Recovery Information

Recovery Table

Length ft	Description	Volume bbl
45.00	M 100m w ith a couple oil spots.	0.221

Total Length: 45.00 ft Total Volume: 0.221 bbl

Num Fluid Samples: 0

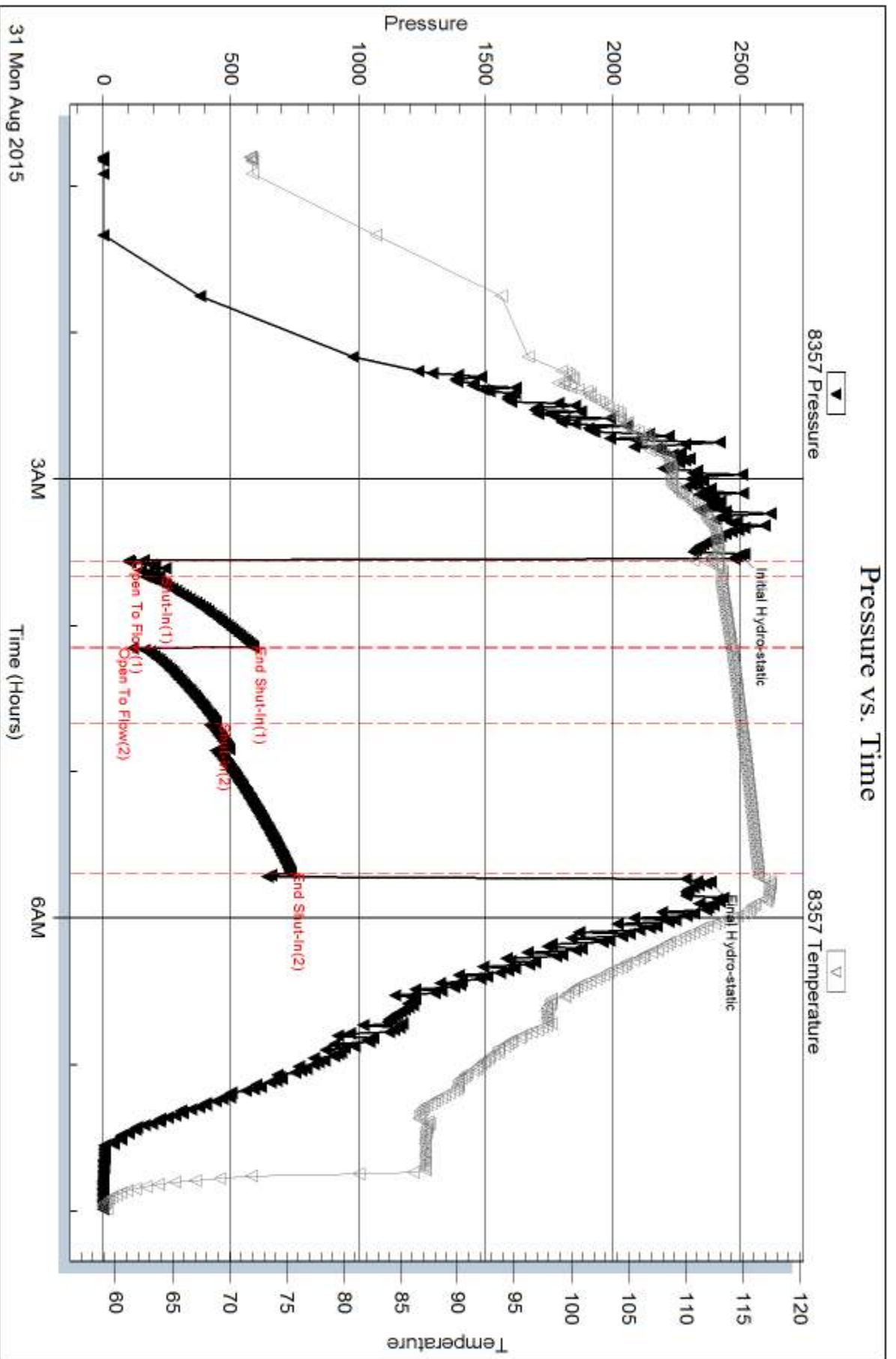
Num Gas Bombs: 0

Serial #:

Laboratory Name:

Laboratory Location:

Recovery Comments:

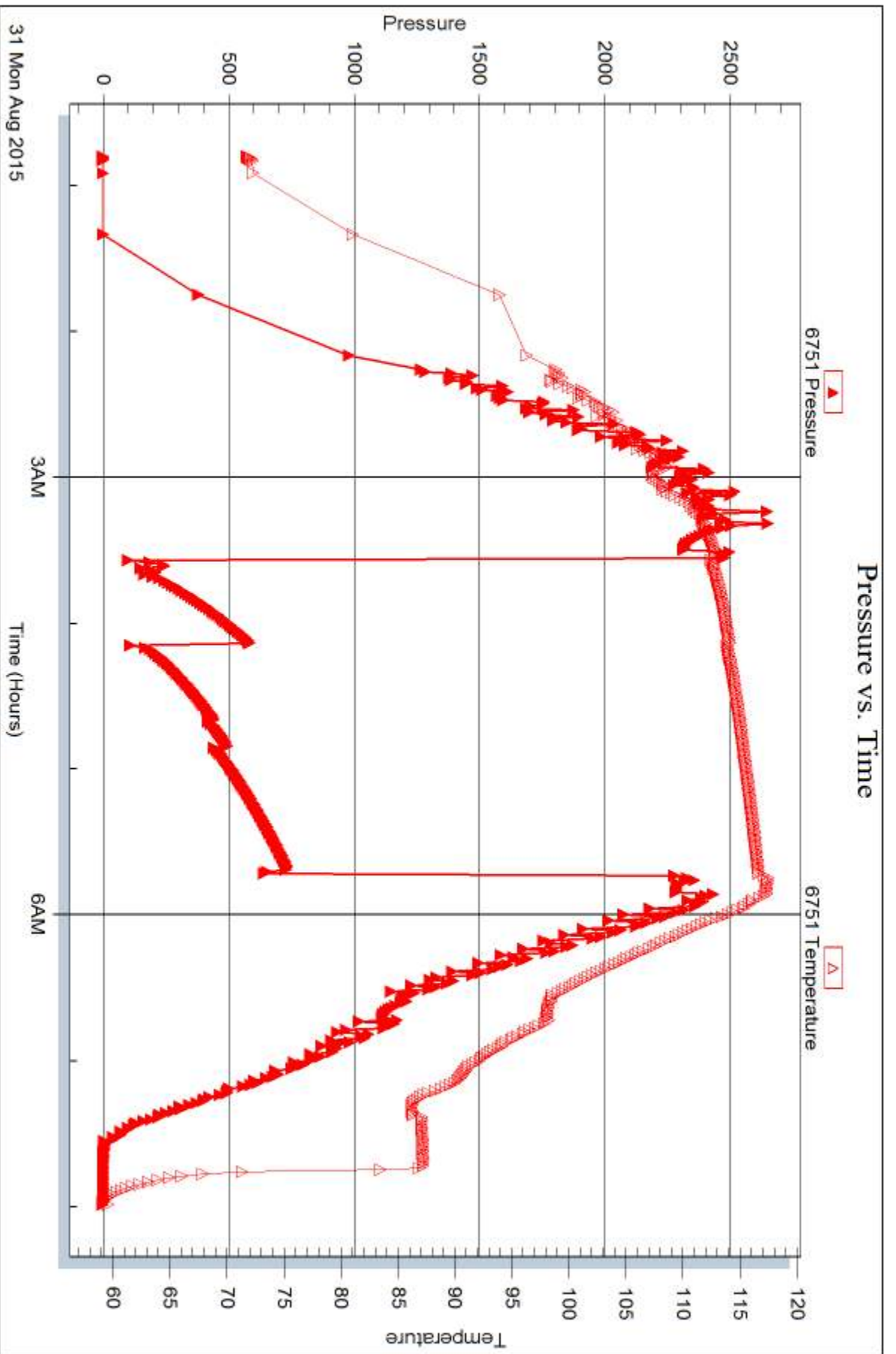


Serial #: 6751

Outside Mall Drilling Co., Inc.

Guffey Trust#1-9

DST Test Number: 1





DRILL STEM TEST REPORT

Prepared For: **Mull Drilling Co., Inc.**

1700 N Waterfront Pkwy
Bldg 12000
Wichita, KS 67206

ATTN: Phil Askey

Guffey Trust #1-9

S9-25s-42w Hamilton,KS

Start Date: 2015.09.01 @ 04:32:00

End Date: 2015.09.01 @ 11:33:39

Job Ticket #: 61711 DST #: 2

Trilobite Testing, Inc
1515 Commerce Parkway Hays, KS 67601
ph: 785-625-4778 fax: 785-625-5620

Printed: 2015.09.03 @ 14:36:24

Mull Drilling Co., Inc.

S9-25s-42w Hamilton,KS

Guffey Trust #1-9

DST # 2

Mid Morrow Sand

2015.09.01



TRILOBITE TESTING, INC

DRILL STEM TEST REPORT

Mull Drilling Co., Inc.
 1700 N Waterfront Pkw y
 Bldg 12000
 Wichita, KS 67206
 ATTN: Phil Askey

S9-25s-42w Hamilton,KS

Guffey Trust #1-9

Job Ticket: 61711 **DST#: 2**
 Test Start: 2015.09.01 @ 04:32:00

GENERAL INFORMATION:

Formation: **Mid Morrow Sand**
 Deviated: No Whipstock: ft (KB)
 Time Tool Opened: 07:16:20
 Time Test Ended: 11:33:39
 Interval: **5302.00 ft (KB) To 5340.00 ft (KB) (TVD)**
 Total Depth: 5340.00 ft (KB) (TVD)
 Hole Diameter: 7.88 inches Hole Condition: Good
 Test Type: Conventional Bottom Hole (Reset)
 Tester: Chuck Smith
 Unit No: 61
 Reference Elevations: 3595.00 ft (KB)
 3582.00 ft (CF)
 KB to GR/CF: 13.00 ft

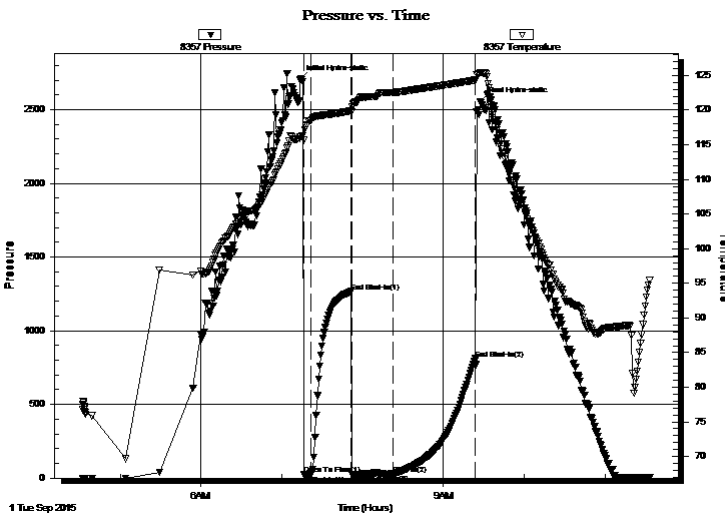
Serial #: 8357

Inside

Press@RunDepth: 27.60 psig @ 5303.00 ft (KB) Capacity: 8000.00 psig
 Start Date: 2015.09.01 End Date: 2015.09.01 Last Calib.: 2015.09.01
 Start Time: 04:32:02 End Time: 11:33:40 Time On Btm: 2015.09.01 @ 07:13:30
 Time Off Btm: 2015.09.01 @ 09:27:09

TEST COMMENT: 5- Surface blow throughout.
 30- No return.
 30- No blow .
 60- No return.

PRESSURE SUMMARY



Time (Min.)	Pressure (psig)	Temp (deg F)	Annotation
0	2702.15	116.13	Initial Hydro-static
3	23.22	115.64	Open To Flow (1)
8	20.99	118.52	Shut-In(1)
38	1266.46	119.91	End Shut-In(1)
39	25.48	119.75	Open To Flow (2)
69	27.60	122.53	Shut-In(2)
131	810.03	124.34	End Shut-In(2)
134	2554.74	125.44	Final Hydro-static

Recovery

Length (ft)	Description	Volume (bbl)
40.00	VSOCM 1 to 99m	0.20

* Recovery from multiple tests

Gas Rates

Choke (inches)	Pressure (psig)	Gas Rate (Mcf/d)



TRILOBITE TESTING, INC

DRILL STEM TEST REPORT

Mull Drilling Co., Inc.

1700 N Waterfront Pkw y
Bldg 12000
Wichita, KS 67206
ATTN: Phil Askey

S9-25s-42w Hamilton,KS

Guffey Trust #1-9

Job Ticket: 61711

DST#: 2

Test Start: 2015.09.01 @ 04:32:00

GENERAL INFORMATION:

Formation: **Mid Morrow Sand**

Deviated: No Whipstock: ft (KB)

Time Tool Opened: 07:16:20

Time Test Ended: 11:33:39

Test Type: Conventional Bottom Hole (Reset)

Tester: Chuck Smith

Unit No: 61

Interval: 5302.00 ft (KB) To 5340.00 ft (KB) (TVD)

Total Depth: 5340.00 ft (KB) (TVD)

Hole Diameter: 7.88 inches Hole Condition: Good

Reference Elevations: 3595.00 ft (KB)

3582.00 ft (CF)

KB to GR/CF: 13.00 ft

Serial #: 6751

Outside

Press@RunDepth: psig @ 5303.00 ft (KB)

Start Date: 2015.09.01

End Date:

2015.09.01

Start Time: 04:32:02

End Time:

11:33:40

Capacity: 8000.00 psig

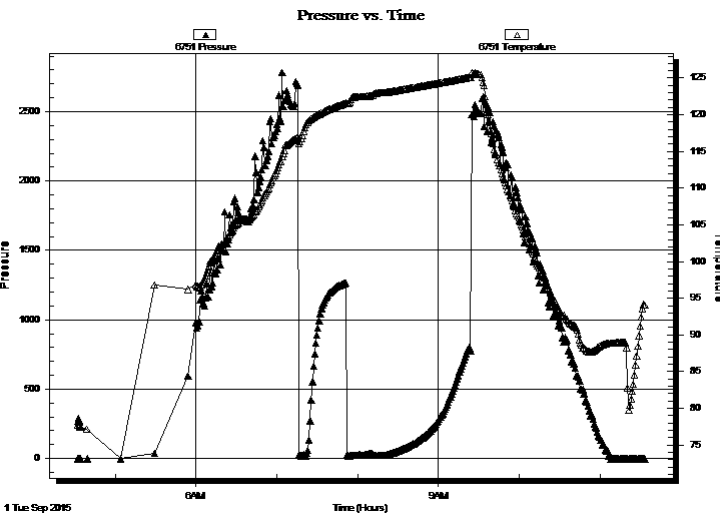
Last Calib.:

2015.09.01

Time On Btm:

Time Off Btm:

TEST COMMENT: 5- Surface blow throughout.
30- No return.
30- No blow .
60- No return.



PRESSURE SUMMARY

Time (Min.)	Pressure (psig)	Temp (deg F)	Annotation

Recovery

Length (ft)	Description	Volume (bbl)
40.00	VSOCM 1 to 99m	0.20

* Recovery from multiple tests

Gas Rates

	Choke (inches)	Pressure (psig)	Gas Rate (Mcf/d)



**TRILOBITE
TESTING, INC**

DRILL STEM TEST REPORT

TOOL DIAGRAM

Mull Drilling Co., Inc.

S9-25s-42w Hamilton,KS

1700 N Waterfront Pkwy
Bldg 12000
Wichita, KS 67206
ATTN: Phil Askey

Guffey Trust #1-9

Job Ticket: 61711

DST#: 2

Test Start: 2015.09.01 @ 04:32:00

Tool Information

Drill Pipe:	Length: 5114.00 ft	Diameter: 3.82 inches	Volume: 72.49 bbl	Tool Weight: 2300.00 lb
Heavy Wt. Pipe:	Length: 0.00 ft	Diameter: 2.25 inches	Volume: 0.00 bbl	Weight set on Packer: 25000.00 lb
Drill Collar:	Length: 182.00 ft	Diameter: 2.25 inches	Volume: 0.90 bbl	Weight to Pull Loose: 90000.00 lb
			<u>Total Volume: 73.39 bbl</u>	Tool Chased 0.00 ft
Drill Pipe Above KB:	21.50 ft			String Weight: Initial 76000.00 lb
Depth to Top Packer:	5302.00 ft			Final 76000.00 lb
Depth to Bottom Packer:	ft			
Interval between Packers:	38.00 ft			
Tool Length:	65.50 ft			
Number of Packers:	2	Diameter: 6.75 inches		

Tool Comments:

Tool Description

Tool Description	Length (ft)	Serial No.	Position	Depth (ft)	Accum. Lengths
Change Over Sub	1.00			5275.50	
Shut In Tool	5.00			5280.50	
Hydraulic tool	5.00			5285.50	
Jars	5.00			5290.50	
Safety Joint	2.50			5293.00	
Packer	5.00			5298.00	27.50 Bottom Of Top Packer
Packer	4.00			5302.00	
Stubb	1.00			5303.00	
Recorder	0.00	8357	Inside	5303.00	
Recorder	0.00	6751	Outside	5303.00	
Perforations	34.00			5337.00	
Bullnose	3.00			5340.00	38.00 Bottom Packers & Anchor

Total Tool Length: 65.50



**TRILOBITE
TESTING, INC**

DRILL STEM TEST REPORT

FLUID SUMMARY

Mull Drilling Co., Inc.

S9-25s-42w Hamilton,KS

1700 N Waterfront Pkw y
Bldg 12000
Wichita, KS 67206
ATTN: Phil Askey

Guffey Trust #1-9

Job Ticket: 61711

DST#: 2

Test Start: 2015.09.01 @ 04:32:00

Mud and Cushion Information

Mud Type: Gel Chem

Cushion Type:

Oil API:

deg API

Mud Weight: 9.00 lb/gal

Cushion Length:

ft

Water Salinity:

ppm

Viscosity: 50.00 sec/qt

Cushion Volume:

bbbl

Water Loss: 9.97 in³

Gas Cushion Type:

Resistivity: ohm.m

Gas Cushion Pressure:

psig

Salinity: 6800.00 ppm

Filter Cake: 1.00 inches

Recovery Information

Recovery Table

Length ft	Description	Volume bbl
40.00	VSOCM 1o 99m	0.197

Total Length: 40.00 ft Total Volume: 0.197 bbl

Num Fluid Samples: 0

Num Gas Bombs: 0

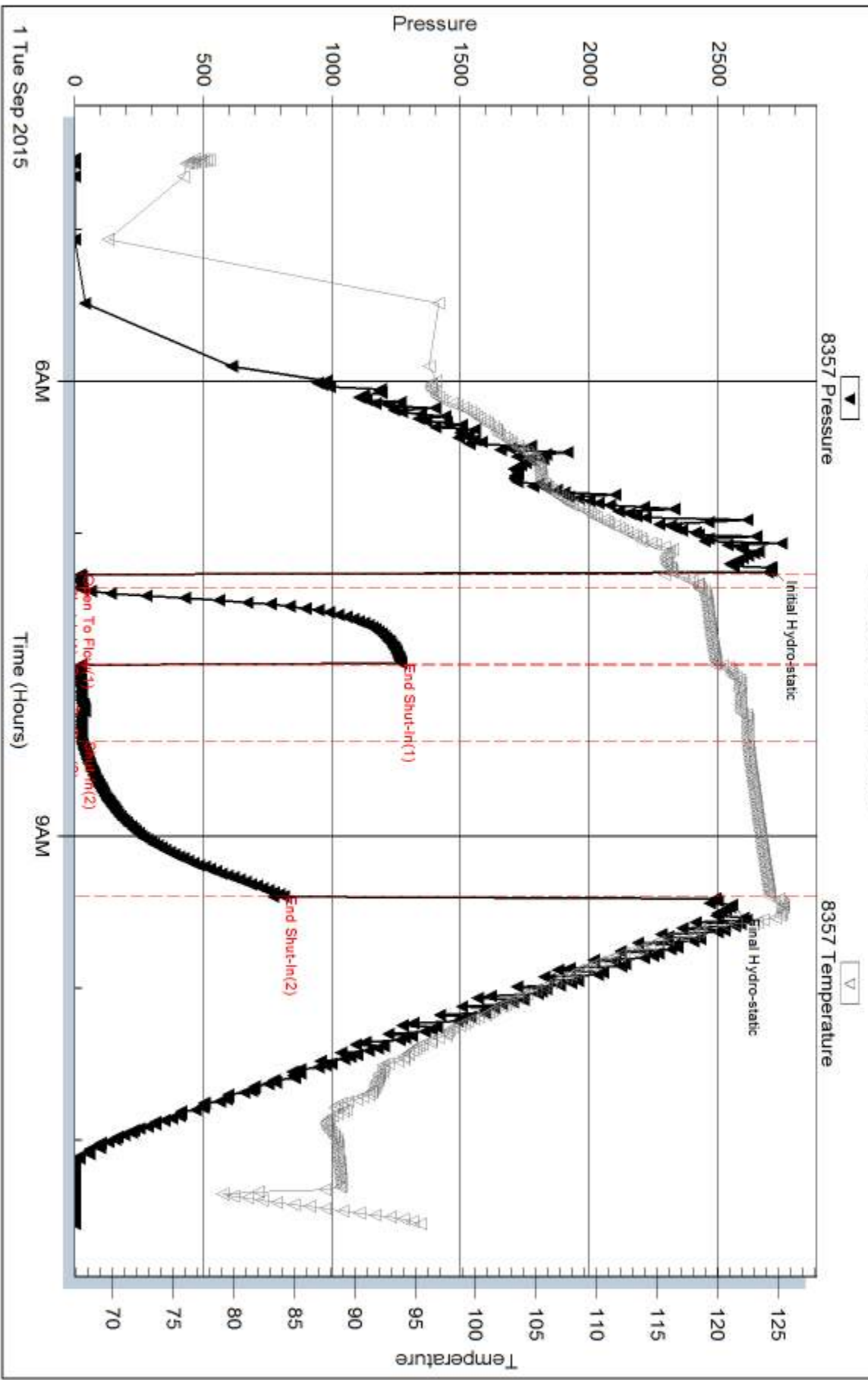
Serial #:

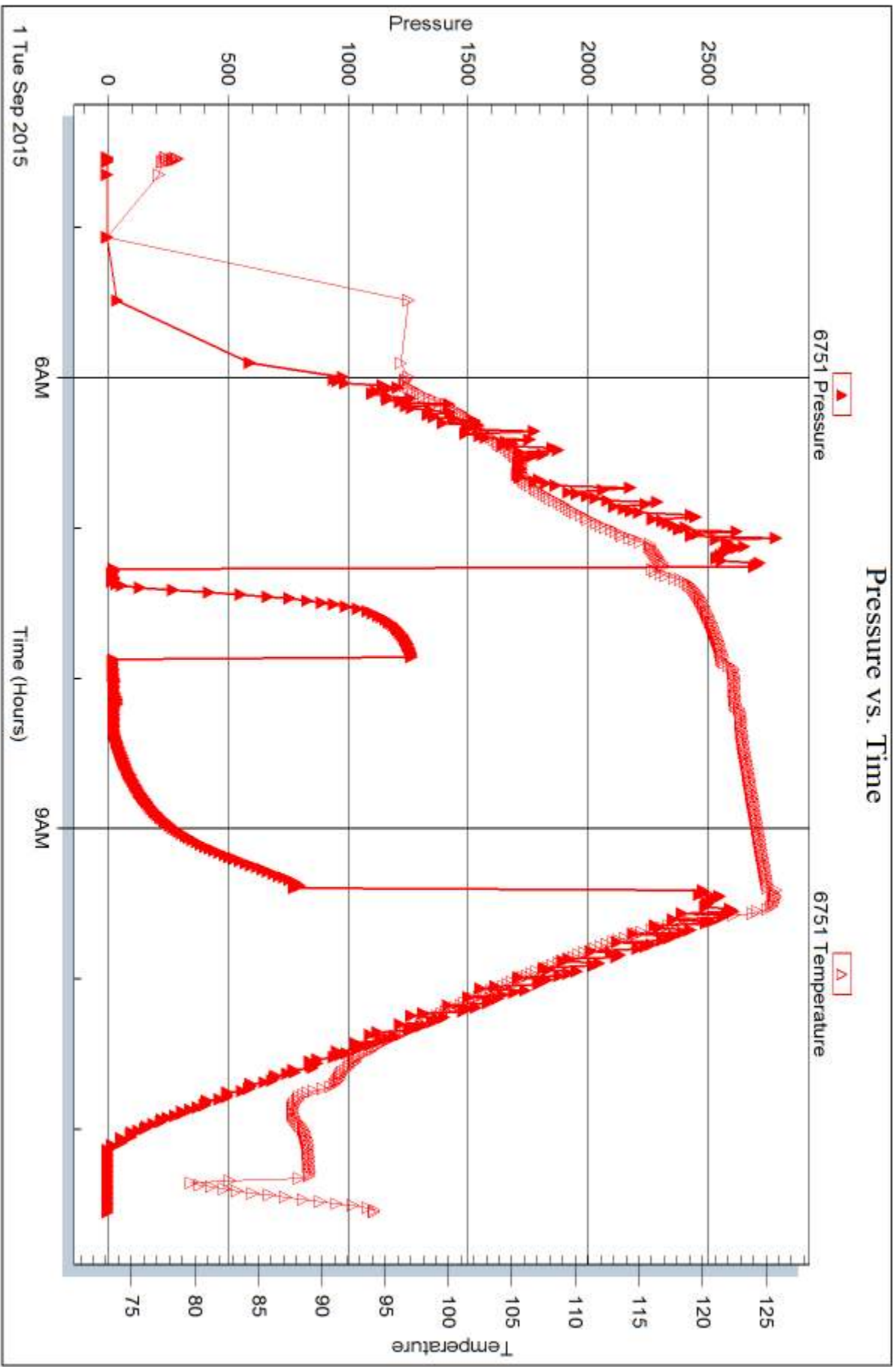
Laboratory Name:

Laboratory Location:

Recovery Comments:

Pressure vs. Time







DRILL STEM TEST REPORT

Prepared For: **Mull Drilling Co., Inc.**

1700 N Waterfront Pkwy
Bldg 12000
Wichita, KS 67206

ATTN: Phil Askey

Guffey Trust #1-9

S9-25s-42w Hamilton,KS

Start Date: 2015.09.02 @ 11:00:02

End Date: 2015.09.02 @ 18:41:10

Job Ticket #: 61712 DST #: 3

Trilobite Testing, Inc
1515 Commerce Parkway Hays, KS 67601
ph: 785-625-4778 fax: 785-625-5620

Printed: 2015.09.03 @ 14:34:52

Mull Drilling Co., Inc.

S9-25s-42w Hamilton,KS

Guffey Trust #1-9

DST # 3

Lower Morrow Sand

2015.09.02



TRILOBITE TESTING, INC

DRILL STEM TEST REPORT

Mull Drilling Co., Inc.
 1700 N Waterfront Pkw y
 Bldg 12000
 Wichita, KS 67206
 ATTN: Phil Askey

S9-25s-42w Hamilton,KS

Guffey Trust #1-9

Job Ticket: 61712 **DST#: 3**

Test Start: 2015.09.02 @ 11:00:02

GENERAL INFORMATION:

Formation: **Lower Morrow Sand**

Deviated: No Whipstock: ft (KB)

Time Tool Opened: 14:11:30

Time Test Ended: 18:41:10

Test Type: Conventional Bottom Hole (Reset)

Tester: Chuck Smith

Unit No: 61

Interval: 5404.00 ft (KB) To 5432.00 ft (KB) (TVD)

Total Depth: 5432.00 ft (KB) (TVD)

Hole Diameter: 7.88 inches Hole Condition: Good

Reference Elevations: 3595.00 ft (KB)

3582.00 ft (CF)

KB to GR/CF: 13.00 ft

Serial #: 8357

Inside

Press@RunDepth: 712.61 psig @ 5405.00 ft (KB)

Start Date: 2015.09.02

End Date:

2015.09.02

Start Time: 11:00:02

End Time:

18:41:10

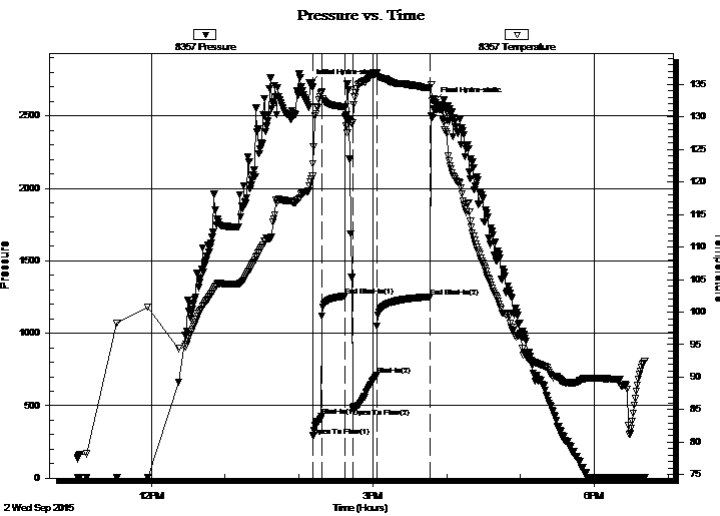
Capacity: 8000.00 psig

Last Calib.: 2015.09.02

Time On Btm: 2015.09.02 @ 14:08:30

Time Off Btm: 2015.09.02 @ 15:50:00

TEST COMMENT: 6- B.O.B. @ 2 min. Note; tool slowly slid approx 10' after opening with about 5' mud loss in nipple.
 20- Surface return. Afterwards pulled tool up 10' to verify string still free, set back on bottom and let hydraulic reopen.
 20- B.O.B. @ 3 min.
 40- No return.



PRESSURE SUMMARY

Time (Min.)	Pressure (psig)	Temp (deg F)	Annotation
0	2725.66	119.43	Initial Hydro-static
3	291.81	122.80	Open To Flow (1)
10	426.85	133.71	Shut-In(1)
29	1257.99	131.55	End Shut-In(1)
35	479.25	129.09	Open To Flow (2)
55	712.61	136.69	Shut-In(2)
98	1251.95	134.46	End Shut-In(2)
102	2597.78	132.71	Final Hydro-static

Recovery

Length (ft)	Description	Volume (bbl)
864.00	GMW 5g 5m 90w Could see & smell gas	10.56
248.00	MW 15m 85w	3.52
308.00	MW 50m 50w	4.37

* Recovery from multiple tests

Gas Rates

	Choke (inches)	Pressure (psig)	Gas Rate (Mcf/d)



TRILOBITE TESTING, INC

DRILL STEM TEST REPORT

Mull Drilling Co., Inc.
 1700 N Waterfront Pkw y
 Bldg 12000
 Wichita, KS 67206
 ATTN: Phil Askey

S9-25s-42w Hamilton,KS

Guffey Trust #1-9

Job Ticket: 61712 **DST#: 3**
 Test Start: 2015.09.02 @ 11:00:02

GENERAL INFORMATION:

Formation: **Lower Morrow Sand**

Deviated: No Whipstock: ft (KB)

Time Tool Opened: 14:11:30

Time Test Ended: 18:41:10

Test Type: Conventional Bottom Hole (Reset)

Tester: Chuck Smith

Unit No: 61

Interval: **5404.00 ft (KB) To 5432.00 ft (KB) (TVD)**

Reference Elevations: 3595.00 ft (KB)

Total Depth: 5432.00 ft (KB) (TVD)

3582.00 ft (CF)

Hole Diameter: 7.88 inches Hole Condition: Good

KB to GR/CF: 13.00 ft

Serial #: 6751 Outside

Press@RunDepth: psig @ 5405.00 ft (KB)

Capacity: 8000.00 psig

Start Date: 2015.09.02 End Date: 2015.09.02

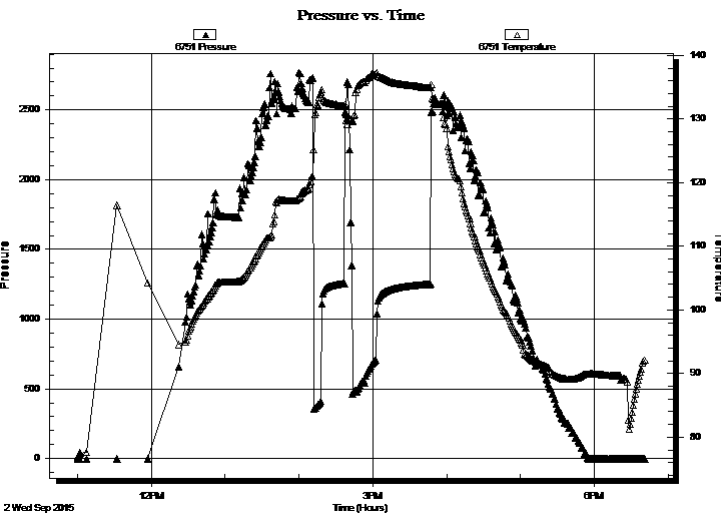
Last Calib.: 2015.09.02

Start Time: 11:00:02 End Time: 18:41:10

Time On Btm:

Time Off Btm:

TEST COMMENT: 6- B.O.B. @ 2 min. Note; tool slowly slid approx 10' after opening with about 5' mud loss in nipple.
 20- Surface return. Afterwards pulled tool up 10' to verify string still free, set back on bottom and let hydraulic reopen.
 20- B.O.B. @ 3 min.
 40- No return.



PRESSURE SUMMARY

Time (Min.)	Pressure (psig)	Temp (deg F)	Annotation

Recovery

Length (ft)	Description	Volume (bbl)
864.00	GMW 5g 5m 90w Could see & smell gas	10.56
248.00	MW 15m 85w	3.52
308.00	MW 50m 50w	4.37

Gas Rates

Choke (inches)	Pressure (psig)	Gas Rate (Mcf/d)

* Recovery from multiple tests



**TRILOBITE
TESTING, INC**

DRILL STEM TEST REPORT

TOOL DIAGRAM

Mull Drilling Co., Inc.

S9-25s-42w Hamilton,KS

1700 N Waterfront Pkwy
Bldg 12000
Wichita, KS 67206
ATTN: Phil Askey

Guffey Trust #1-9

Job Ticket: 61712

DST#: 3

Test Start: 2015.09.02 @ 11:00:02

Tool Information

Drill Pipe:	Length: 5206.00 ft	Diameter: 3.82 inches	Volume: 73.80 bbl	Tool Weight: 2300.00 lb
Heavy Wt. Pipe:	Length: 0.00 ft	Diameter: 2.25 inches	Volume: 0.00 bbl	Weight set on Packer: 25000.00 lb
Drill Collar:	Length: 182.00 ft	Diameter: 2.25 inches	Volume: 0.90 bbl	Weight to Pull Loose: 110000.0 lb
			<u>Total Volume: 74.70 bbl</u>	Tool Chased 0.00 ft
Drill Pipe Above KB:	11.50 ft			String Weight: Initial 77000.00 lb
Depth to Top Packer:	5404.00 ft			Final 83000.00 lb
Depth to Bottom Packer:	ft			
Interval between Packers:	28.00 ft			
Tool Length:	55.50 ft			
Number of Packers:	2	Diameter: 6.75 inches		

Tool Comments:

Tool Description

Tool Description	Length (ft)	Serial No.	Position	Depth (ft)	Accum. Lengths
Change Over Sub	1.00			5377.50	
Shut In Tool	5.00			5382.50	
Hydraulic tool	5.00			5387.50	
Jars	5.00			5392.50	
Safety Joint	2.50			5395.00	
Packer	5.00			5400.00	27.50 Bottom Of Top Packer
Packer	4.00			5404.00	
Stubb	1.00			5405.00	
Recorder	0.00	8357	Inside	5405.00	
Recorder	0.00	6751	Outside	5405.00	
Perforations	24.00			5429.00	
Bullnose	3.00			5432.00	28.00 Bottom Packers & Anchor

Total Tool Length: 55.50



**TRILOBITE
TESTING, INC**

DRILL STEM TEST REPORT

FLUID SUMMARY

Mull Drilling Co., Inc.

S9-25s-42w Hamilton,KS

1700 N Waterfront Pkwy
Bldg 12000
Wichita, KS 67206
ATTN: Phil Askey

Guffey Trust #1-9

Job Ticket: 61712

DST#: 3

Test Start: 2015.09.02 @ 11:00:02

Mud and Cushion Information

Mud Type: Gel Chem

Cushion Type:

Oil API:

deg API

Mud Weight: 9.00 lb/gal

Cushion Length:

ft

Water Salinity:

36000 ppm

Viscosity: 55.00 sec/qt

Cushion Volume:

bbbl

Water Loss: 9.18 in³

Gas Cushion Type:

Resistivity: ohm.m

Gas Cushion Pressure:

psig

Salinity: 7800.00 ppm

Filter Cake: 1.00 inches

Recovery Information

Recovery Table

Length ft	Description	Volume bbl
864.00	GMW 5g 5m 90w Could see & smell gas	10.563
248.00	MW 15m 85w	3.516
308.00	MW 50m 50w	4.366

Total Length: 1420.00 ft Total Volume: 18.445 bbl

Num Fluid Samples: 0

Num Gas Bombs: 0

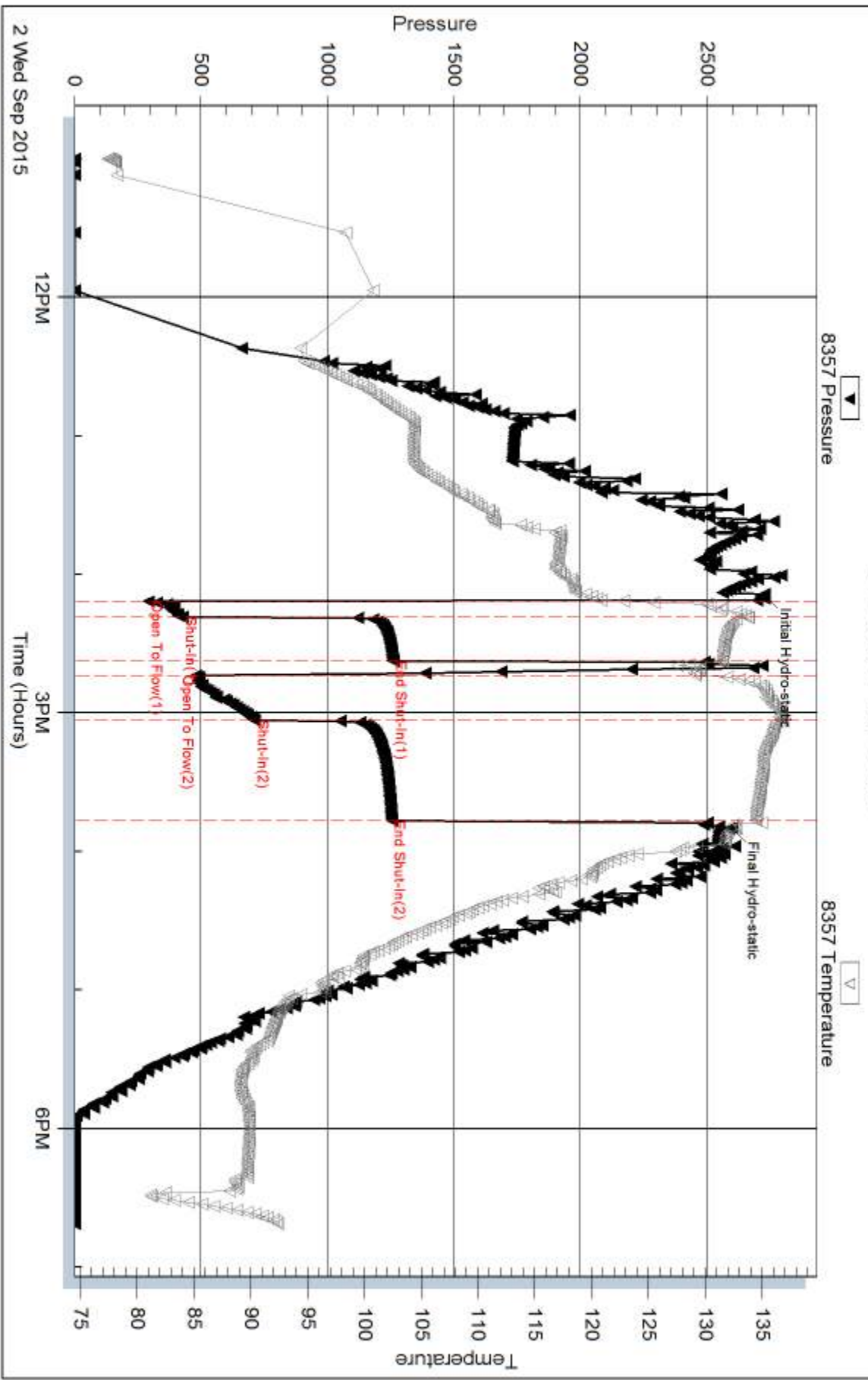
Serial #:

Laboratory Name:

Laboratory Location:

Recovery Comments: RW: .150 @ 92 Degrees F = 36000 PPM

Pressure vs. Time

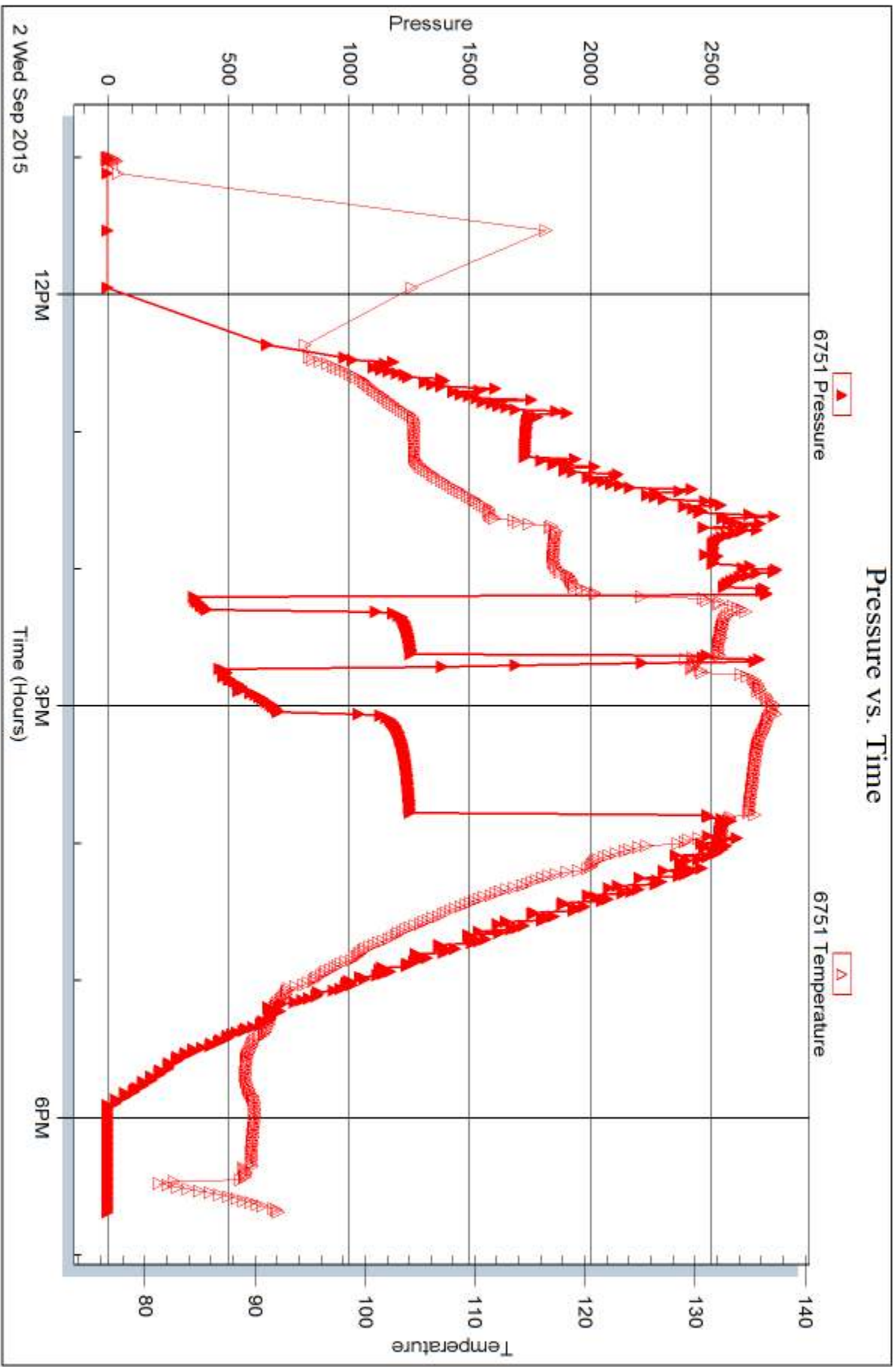


Serial #: 6751

Outside Mall Drilling Co., Inc.

Guffey Trust#1-9

DST Test Number: 3



Trilobite Testing, Inc

Ref. No: 61712

Printed: 2015.09.03 @ 14:34:54



TRILOBITE TESTING INC.

1515 Commerce Parkway • Hays, Kansas 67601

Test Ticket

61710

NO.

4/10

Well Name & No. Guffey Trust #1-9 Test No. 1 Date 8-30-15
 Company Mull Drilling Co., Inc. Elevation 3595 KB 3582 GL
 Address 1700 N. Waterfront Pkwy Bldg. 12000 Wichita, KS 67206
 Co. Rep / Geo. Phil Askey Rig Duke #9
 Location: Sec. 9 Twp. 25s Rge. 42w Co. Hamilton State KS

Interval Tested 5007 - 5080 Zone Tested Upper Marrow
 Anchor Length 73 Drill Pipe Run 4829 Mud Wt. 9.2
 Top Packer Depth 5003 Drill Collars Run 182 Vis 53
 Bottom Packer Depth 5007 Wt. Pipe Run 0 WL 11.2
 Total Depth 5080 Chlorides 6200 ppm System LCM 6"
 Blow Description Surface blow throughout
No return.
No blow.
No return.

Rec	Feet of	%gas	%oil	%water	%mud
Rec <u>45</u>	Feet of <u>M with a couple oil spots</u>	%gas	%oil	%water	<u>100</u> %mud
Rec	Feet of	%gas	%oil	%water	%mud
Rec	Feet of	%gas	%oil	%water	%mud
Rec	Feet of	%gas	%oil	%water	%mud

Rec Total 45 BHT 116 Gravity — API RW @ — °F Chlorides — ppm

(A) Initial Hydrostatic <u>2499</u>	<input checked="" type="checkbox"/> Test <u>1050</u>	T-On Location <u>23:55</u>
(B) First Initial Flow <u>100</u>	<input checked="" type="checkbox"/> Jars <u>250</u>	T-Started <u>00:48</u>
(C) First Final Flow <u>219</u>	<input checked="" type="checkbox"/> Safety Joint <u>75</u>	T-Open <u>3:33</u>
(D) Initial Shut-In <u>587</u>	<input checked="" type="checkbox"/> Circ Sub <u>N/C</u>	T-Pulled <u>5:41</u>
(E) Second Initial Flow <u>116</u>	<input type="checkbox"/> Hourly Standby	T-Out <u>7:59</u>
(F) Second Final Flow <u>443</u>	<input checked="" type="checkbox"/> Mileage <u>171</u>	Comments
(G) Final Shut-In <u>735</u>	<input type="checkbox"/> Sampler	
(H) Final Hydrostatic <u>2381</u>	<input type="checkbox"/> Straddle	<input type="checkbox"/> Ruined Shale Packer
Initial Open <u>5</u>	<input type="checkbox"/> Shale Packer	<input type="checkbox"/> Ruined Packer
Initial Shut-In <u>30</u>	<input type="checkbox"/> Extra Packer	<input type="checkbox"/> Extra Copies
Final Flow <u>30</u>	<input type="checkbox"/> Extra Recorder	Sub Total <u>0</u>
Final Shut-In <u>60</u>	<input type="checkbox"/> Day Standby	Total <u>1546</u>
	<input type="checkbox"/> Accessibility	MP/DST Disc't
	Sub Total <u>1546</u>	

Approved By

Phil Askey

Our Representative

Chuck Smith

Trilobite Testing Inc. shall not be liable for damaged of any kind of the property or personnel of the one for whom a test is made, or for any loss suffered or sustained, directly or indirectly, through the use of its equipment, or its statements or opinion concerning the results of any test, tools lost or damaged in the hole shall be paid for at cost by the party for whom the test is made.



TRILOBITE TESTING INC.

1515 Commerce Parkway • Hays, Kansas 67601

Test Ticket

61711

NO.

4/10

Well Name & No. Guffey Trust #1-9 Test No. 2 Date 9-1-15
 Company Mull Drilling Co., Inc. Elevation 3595 KB 3582 GL
 Address 1700 N. Waterfront Pkwy. Bldg 12000 Wichita, KS 67206
 Co. Rep / Geo. Phil Askey Rig Duke #9
 Location: Sec. 9 Twp. 25s Rge. 42w Co. Hamilton State KS

Interval Tested 5302-5340 Zone Tested Mid Morrow Sand
 Anchor Length 38 Drill Pipe Run 5114 Mud Wt. 9.1
 Top Packer Depth 5298 Drill Collars Run 182 Vis 50
 Bottom Packer Depth 5302 Wt. Pipe Run 0 WL 10.0
 Total Depth 5340 Chlorides 6800 ppm System LCM 5th
 Blow Description Surface blow throughout.
No return.
No blow.
No return.

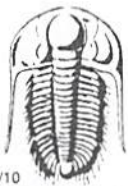
Rec	Feet of	%gas	%oil	%water	%mud
Rec <u>40</u>	Feet of <u>USOCM</u>	%gas	<u>1</u> %oil	%water	<u>99</u> %mud
Rec	Feet of	%gas	%oil	%water	%mud
Rec	Feet of	%gas	%oil	%water	%mud
Rec	Feet of	%gas	%oil	%water	%mud

Rec Total 40 BHT 124 Gravity — API RW — @ — °F Chlorides — ppm

(A) Initial Hydrostatic <u>2702</u>	<input checked="" type="checkbox"/> Test <u>1250</u>	T-On Location <u>4:30</u>
(B) First Initial Flow <u>23</u>	<input checked="" type="checkbox"/> Jars <u>250</u>	T-Started <u>4:32</u>
(C) First Final Flow <u>21</u>	<input checked="" type="checkbox"/> Safety Joint <u>75</u>	T-Open <u>7:16</u>
(D) Initial Shut-In <u>1266</u>	<input checked="" type="checkbox"/> Circ Sub <u>NIC</u>	T-Pulled <u>9:24</u>
(E) Second Initial Flow <u>25</u>	<input type="checkbox"/> Hourly Standby	T-Out <u>11:34</u>
(F) Second Final Flow <u>28</u>	<input checked="" type="checkbox"/> Mileage <u>171</u>	Comments
(G) Final Shut-In <u>810</u>	<input type="checkbox"/> Sampler	
(H) Final Hydrostatic <u>2555</u>	<input type="checkbox"/> Straddle	<input type="checkbox"/> Ruined Shale Packer
Initial Open <u>5</u>	<input type="checkbox"/> Shale Packer	<input type="checkbox"/> Ruined Packer
Initial Shut-In <u>30</u>	<input type="checkbox"/> Extra Packer	<input type="checkbox"/> Extra Copies
Final Flow <u>30</u>	<input type="checkbox"/> Extra Recorder	Sub Total <u>0</u>
Final Shut-In <u>60</u>	<input type="checkbox"/> Day Standby	Total <u>1746</u>
	<input type="checkbox"/> Accessibility	MP/DST Disc't
	Sub Total <u>1746</u>	

Approved By Phil Askey Our Representative Chuck Smith

Trilobite Testing Inc. shall not be liable for damaged of any kind of the property or personnel of the one for whom a test is made, or for any loss suffered or sustained, directly or indirectly, through the use of its equipment, or its statements or opinion concerning the results of any test, tools lost or damaged in the hole shall be paid for at cost by the party for whom the test is made.



TRILOBITE TESTING INC.

1515 Commerce Parkway • Hays, Kansas 67601

Test Ticket

61712

NO.

4/10

Well Name & No. Guffey Trust #1-9 Test No. 3 Date 9-2-15
 Company Mull Drilling Co., Inc. Elevation 3595 KB 3582 GL
 Address 1700 N. Waterfront Pkwy. Bldg. 12000 Wichita, KS 67206
 Co. Rep / Geo. Phil Askey Rig Duke #9
 Location: Sec. 9 Twp. 25S Rge. 42W Co. Hamilton State KS

Interval Tested 540⁴-5432 Zone Tested Lower Morrow Sand
 Anchor Length 28 Drill Pipe Run 5206 Mud Wt. 9.2
 Top Packer Depth 5400 Drill Collars Run 182 Vis 55
 Bottom Packer Depth 54054 Wt. Pipe Run 0 WL 9.2
 Total Depth 5432 Chlorides 7800 ppm System LCM 4[#]

Blow Description B.O.B. @ 2min. Tool slowly slid 10' after opening with about a 5' mud loss in nipple
Surface return. Afterwards pulled tool up 10' to verify string ^{still} free, set tool back on bottom
B.O.B. @ 3min. and allowed hydraulics to open.
No return

Rec	Feet of	%gas	%oil	%water	%mud
<u>308</u>	<u>Feet of MW</u>		<u>50</u>	<u>50</u>	
<u>248</u>	<u>Feet of MW</u>		<u>85</u>	<u>15</u>	
<u>864</u>	<u>Feet of GMW Could see + smell gas</u>	<u>5</u>	<u>90</u>	<u>5</u>	
	<u>Feet of 30' cuttings in bottom collar, oil spots</u>				
	<u>Feet of in tool.</u>				

Rec Total 1420 BHT 135 Gravity — API RW .150 @ 92 °F Chlorides 36000 ppm

(A) Initial Hydrostatic	<u>2726</u>
(B) First Initial Flow	<u>292</u>
(C) First Final Flow	<u>427</u>
(D) Initial Shut-In	<u>1258</u>
(E) Second Initial Flow	<u>479</u>
(F) Second Final Flow	<u>712</u>
(G) Final Shut-In	<u>1252</u>
(H) Final Hydrostatic	<u>2599</u>
Initial Open	<u>6</u>
Initial Shut-In	<u>20</u>
Final Flow	<u>20</u>
Final Shut-In	<u>40</u>

- Test 1250
- Jars 250
- Safety Joint 75
- Circ Sub N/C
- Hourly Standby
- Mileage 171
- Sampler
- Straddle
- Shale Packer
- Extra Packer
- Extra Recorder
- Day Standby
- Accessibility
- Sub Total 1746

T-On Location 11:00
 T-Started 11:00
 T-Open 14:09
 T-Pulled 15:50
 T-Out 18:41
 Comments 2 motel receipts
 Ruined Shale Packer
 Ruined Packer 320
 Extra Copies
 Sub Total 320
 Total 2066
 MP/DST Disc't

Approved By Phil Askey Our Representative Chuck Smith

Trilobite Testing Inc. shall not be liable for damaged of any kind of the property or personnel of the one for whom a test is made, or for any loss suffered or sustained, directly or indirectly, through the use of its equipment, or its statements or opinion concerning the results of any test, tools lost or damaged in the hole shall be paid for at cost by the party for whom the test is made.