



**TRILOBITE
TESTING, INC**

DRILL STEM TEST REPORT

Berexco LLC

Sec. 30-14s-14w Russell,KS

2020 N Bromblew ood
Wichita, KS 67206

SC Unit #1-30

Job Ticket: 61640

DST#: 1

ATTN: Jeff Lawler

Test Start: 2015.08.09 @ 10:11:00

GENERAL INFORMATION:

Formation: **Toronto-LKC "C"**

Deviated: No Whipstock: ft (KB)

Time Tool Opened: 13:43:00

Time Test Ended: 19:13:40

Test Type: Conventional Bottom Hole (Initial)

Tester: Phillip Gage

Unit No: 77

Interval: 2898.00 ft (KB) To 3012.00 ft (KB) (TVD)

Reference Elevations: 1775.00 ft (KB)

Total Depth: 3012.00 ft (KB) (TVD)

1770.00 ft (CF)

Hole Diameter: 7.88 inches Hole Condition: Fair

KB to GR/CF: 5.00 ft

Serial #: 8898 Outside

Press@RunDepth: 197.75 psig @ 2899.00 ft (KB)

Capacity: 8000.00 psig

Start Date: 2015.08.09

End Date:

2015.08.09

Last Calib.:

2015.08.09

Start Time: 10:11:01

End Time:

19:13:40

Time On Btm:

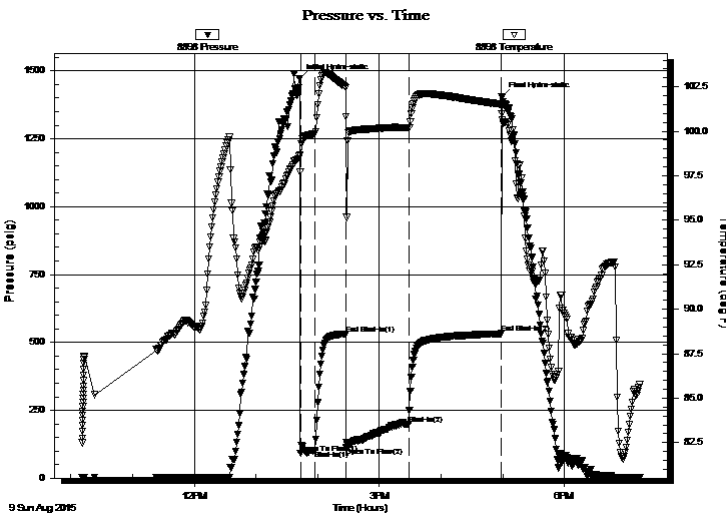
2015.08.09 @ 13:42:50

Time Off Btm:

2015.08.09 @ 16:58:50

TEST COMMENT: 15-IF-BOB in 2 mins
30-ISI-BOB in 10 mins.
60-FF-BOB instantly
90-FSI-BOB in 9 mins, died back to 6"

PRESSURE SUMMARY



Time (Min.)	Pressure (psig)	Temp (deg F)	Annotation
0	1472.83	98.68	Initial Hydro-static
1	91.62	97.72	Open To Flow (1)
15	102.28	99.85	Shut-In(1)
45	530.92	102.47	End Shut-In(1)
45	112.13	100.82	Open To Flow (2)
106	197.75	100.19	Shut-In(2)
196	534.43	101.52	End Shut-In(2)
197	1405.69	100.99	Final Hydro-static

Recovery

Length (ft)	Description	Volume (bbl)
126.00	SOMCG, 10%o, 30%m, 60%g	1.49
252.00	VSOCM, 98%m, 2%o	3.53
73.00	M, w ith oil spots, 100%m	1.02
0.00	GIP-2434'	0.00

Gas Rates

	Choke (inches)	Pressure (psig)	Gas Rate (Mcf/d)
First Gas Rate	0.25	0.00	22.84
Last Gas Rate	0.25	9.00	37.12
Max. Gas Rate	0.25	9.00	37.12



**TRILOBITE
TESTING, INC**

DRILL STEM TEST REPORT

FLUID SUMMARY

Berexco LLC

Sec. 30-14s-14w Russell, KS

2020 N Bromblew ood
Wichita, KS 67206

SC Unit #1-30

Job Ticket: 61640

DST#: 1

ATTN: Jeff Lawler

Test Start: 2015.08.09 @ 10:11:00

Mud and Cushion Information

Mud Type: Gel Chem

Cushion Type:

Oil API:

deg API

Mud Weight: 9.00 lb/gal

Cushion Length:

ft

Water Salinity:

ppm

Viscosity: 60.00 sec/qt

Cushion Volume:

bbbl

Water Loss: 7.99 in³

Gas Cushion Type:

Resistivity: ohm.m

Gas Cushion Pressure:

psig

Salinity: 3000.00 ppm

Filter Cake: 1.50 inches

Recovery Information

Recovery Table

Length ft	Description	Volume bbbl
126.00	SOMCG, 10%o, 30%m, 60%g	1.494
252.00	VSOCM, 98%m, 2%o	3.535
73.00	M, with oil spots, 100%m	1.024
0.00	GIP-2434'	0.000

Total Length: 451.00 ft

Total Volume: 6.053 bbl

Num Fluid Samples: 0

Num Gas Bombs: 0

Serial #:

Laboratory Name:

Laboratory Location:

Recovery Comments:



**TRILOBITE
TESTING, INC.**

DRILL STEM TEST REPORT

GAS RATES

Berexco LLC

Sec. 30-14s-14w Russell, KS

2020 N Bromblewood
Wichita, KS 67206

SC Unit #1-30

Job Ticket: 61640

DST#: 1

ATTN: Jeff Lawler

Test Start: 2015.08.09 @ 10:11:00

Gas Rates Information

Temperature: 59 (deg F)
Relative Density: 0.65
Z Factor: 0.8

Gas Rates Table

Flow Period	Elapsed Time	Choke (inches)	Pressure (psig)	Gas Rate (Mcf/d)
60	10	0.25	0.00	22.84
60	10	0.25	7.00	33.95
60	10	0.25	8.00	35.54
60	10	0.25	9.00	37.12
60	10	0.25	9.00	37.12
60	10	0.25	9.00	37.12

