

**TRILOBITE  
TESTING, INC**

# DRILL STEM TEST REPORT

Staab Oil Company

**03-8s-18w Rooks,KS**

1607 Hopewell Rd.  
Hays KS. 67601

**Gisela Northeast # 1**

Job Ticket: 53757

**DST#: 1**

ATTN: Janel Staab

Test Start: 2015.06.26 @ 10:48:00

## GENERAL INFORMATION:

Formation: **LKC E-G**  
 Deviated: No Whipstock: ft (KB)  
 Time Tool Opened: 12:47:38  
 Time Test Ended: 15:35:23  
 Interval: **3157.00 ft (KB) To 3222.00 ft (KB) (TVD)**  
 Total Depth: 3222.00 ft (KB) (TVD)  
 Hole Diameter: 7.88 inches Hole Condition: Fair  
 Test Type: Conventional Bottom Hole (Initial)  
 Tester: Bob Hamel  
 Unit No: 72  
 Reference Elevations: 1930.00 ft (KB)  
 1925.00 ft (CF)  
 KB to GR/CF: 5.00 ft

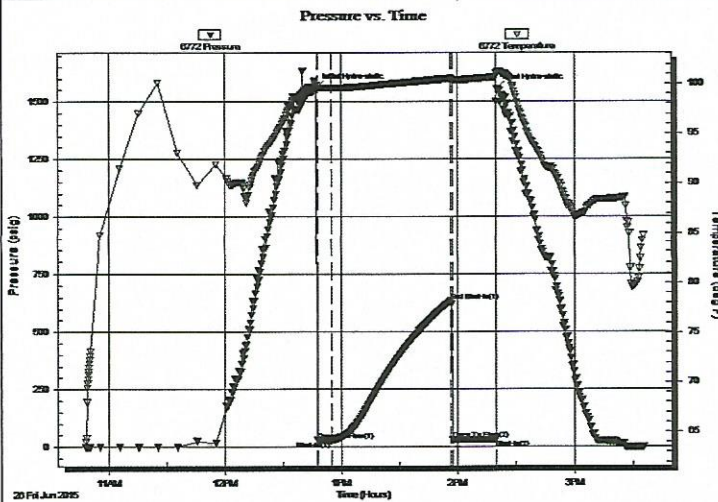
## Serial #: 6772

Inside

Press@RunDepth: 27.96 psig @ 3193.00 ft (KB) Capacity: 8000.00 psig  
 Start Date: 2015.06.26 End Date: 2015.06.26 Last Calib.: 2015.06.26  
 Start Time: 10:48:05 End Time: 15:35:22 Time On Btm: 2015.06.26 @ 12:47:08  
 Time Off Btm: 2015.06.26 @ 14:20:08

TEST COMMENT: I.F. - 5 - Weak surface blow throughout  
 I.S.I. - 60 - No blow back  
 F.F. - 20 - No blow pulled test at 20 min  
 F.S.I. - N/A

## PRESSURE SUMMARY



Time (Min.)	Pressure (psig)	Temp (deg F)	Annotation
0	1561.03	99.84	Initial Hydro-static
1	27.58	99.41	Open To Flow (1)
8	27.96	99.59	Shut-In(1)
70	634.05	100.52	End Shut-In(1)
71	29.42	100.40	Open To Flow (2)
93	30.80	100.66	Shut-In(2)
93	1556.21	101.00	Final Hydro-static

## Recovery

Length (ft)	Description	Volume (bbl)
5.00	VSOCM 1%O 99%M	0.04

## Gas Rates

Choke (inches)	Pressure (psig)	Gas Rate (Mcf/d)