



TRILOBITE TESTING, INC

DRILL STEM TEST REPORT

StrataKan Expl. LLC.

20-21s-13w Stafford Ks

204 W. Mill St.
Plainville Ks. 67663

Fanshier #20-1

Job Ticket: 59794

DST#: 2

ATTN: Justin R. Prater

Test Start: 2015.09.16 @ 07:57:53

GENERAL INFORMATION:

Formation: **Lans. I J K**

Deviated: No Whipstock: ft (KB)

Time Tool Opened: 09:22:53

Time Test Ended: 13:26:08

Test Type: Conventional Bottom Hole (Reset)

Tester: Gary Pevoteaux

Unit No: 80

Interval: 3485.00 ft (KB) To 3546.00 ft (KB) (TVD)

Reference Elevations: 1909.00 ft (KB)

Total Depth: 3546.00 ft (KB) (TVD)

1899.00 ft (CF)

Hole Diameter: 7.88 inches Hole Condition: Poor

KB to GR/CF: 10.00 ft

Serial #: 9124 Outside

Press@RunDepth: 95.34 psig @ 3486.00 ft (KB)

Capacity: 8000.00 psig

Start Date: 2015.09.16

End Date: 2015.09.16

Last Calib.: 2015.09.16

Start Time: 07:57:58

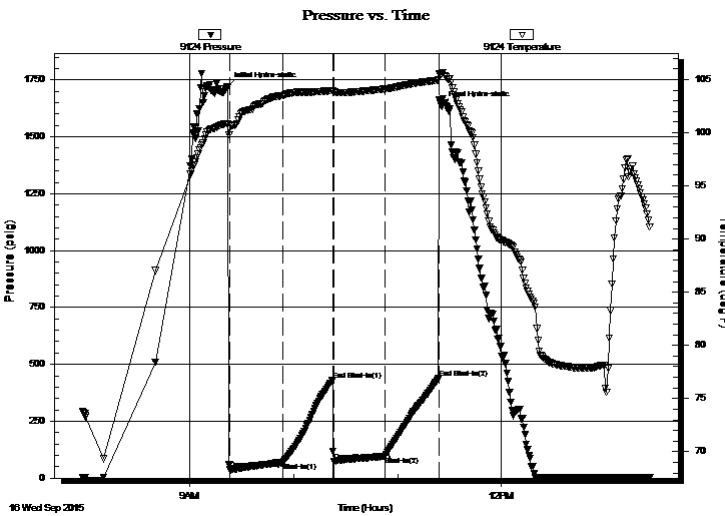
End Time: 13:26:07

Time On Btm: 2015.09.16 @ 09:21:38

Time Off Btm: 2015.09.16 @ 11:25:23

TEST COMMENT: IF: Strong blow . B.O.B. in 3 1/2 mins.
IS: No blow .
FF: Strong blow . B.O.B. in 45 secs.
FS: Weak blow . 1/2 - 1 1/2".

PRESSURE SUMMARY



Time (Min.)	Pressure (psig)	Temp (deg F)	Annotation
0	1718.20	100.86	Initial Hydro-static
2	37.10	100.38	Open To Flow (1)
32	68.42	103.46	Shut-In(1)
61	431.52	103.94	End Shut-In(1)
62	73.64	103.82	Open To Flow (2)
91	95.34	104.09	Shut-In(2)
122	439.80	104.93	End Shut-In(2)
124	1636.41	105.54	Final Hydro-static

Recovery

Length (ft)	Description	Volume (bbl)
0.00	410 ft. of GIP	0.00
110.00	GOCM 34%g 28%o 38%m	1.54
90.00	CGO 22%g 78%o	1.26

* Recovery from multiple tests

Gas Rates

Choke (inches)	Pressure (psig)	Gas Rate (Mcf/d)



**TRILOBITE
TESTING, INC**

DRILL STEM TEST REPORT

FLUID SUMMARY

StrataKan Expl. LLC.

20-21s-13w Stafford Ks

204 W. Mill St.
Plainville Ks. 67663

Fanshier #20-1

Job Ticket: 59794

DST#: 2

ATTN: Justin R. Prater

Test Start: 2015.09.16 @ 07:57:53

Mud and Cushion Information

Mud Type: Gel Chem

Cushion Type:

Oil API:

28.7 deg API

Mud Weight: 9.00 lb/gal

Cushion Length:

ft

Water Salinity:

3500 ppm

Viscosity: 51.00 sec/qt

Cushion Volume:

bbl

Water Loss: 7.60 in³

Gas Cushion Type:

Resistivity: 0.00 ohm.m

Gas Cushion Pressure:

psig

Salinity: 3500.00 ppm

Filter Cake: 0.20 inches

Recovery Information

Recovery Table

Length ft	Description	Volume bbl
0.00	410 ft. of GIP	0.000
110.00	GOCM 34%g 28%o 38%m	1.543
90.00	CGO 22%g 78%o	1.262

Total Length: 200.00 ft Total Volume: 2.805 bbl

Num Fluid Samples: 0

Num Gas Bombs: 0

Serial #: none

Laboratory Name:

Laboratory Location:

Recovery Comments: Sampler Data: Trace of gas, 1555 ML. oil (gr. 28.7 API) 110 ML. mud @ 106 psi

