



## DRILL STEM TEST REPORT

Prepared For: **RJM COMPANY**

P.O. BOX 256  
CLAFLIN, KANSAS 67525

ATTN: WYATT URBAN

**BARTON COUNTY 1**

**12-19S-12W BARTON**

Start Date: 2015.11.07 @ 07:06:00

End Date: 2015.11.07 @ 11:41:00

Job Ticket #: 01246                      DST #: 1

Eagle Testers  
1309 Patton Road    Great Bend, Kansas 67530  
620-791-7394

Printed: 2015.11.08 @ 00:02:21

RJM COMPANY

12-19S-12W BARTON

BARTON COUNTY 1

DST # 1

KANSAS CITY 'A-F'

2015.11.07



# DRILL STEM TEST REPORT

RJM COMPANY  
 P.O. BOX 256  
 CLAFLIN, KANSAS 67525  
 ATTN: WYATT URBAN

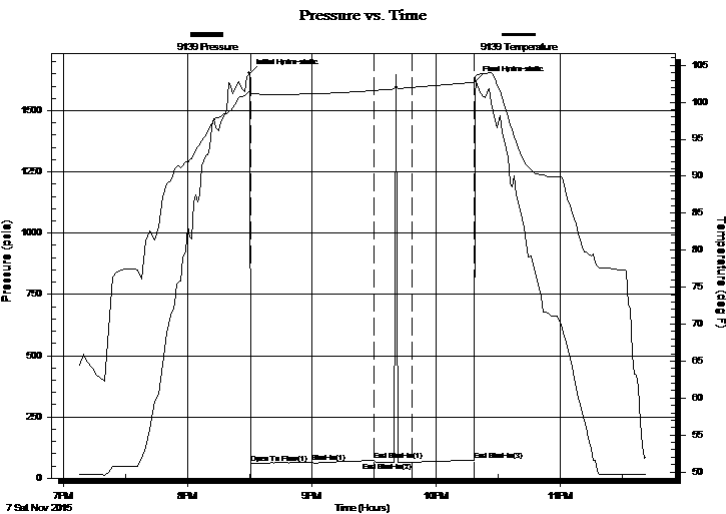
**12-19S-12W BARTON**  
**BARTON COUNTY 1**  
 Job Ticket: 01246 **DST#: 1**  
 Test Start: 2015.11.07 @ 07:06:00

## GENERAL INFORMATION:

Formation: **KANSAS CITY 'A-F'**  
 Deviated: No Whipstock: ft (KB)  
 Time Tool Opened: 08:30:00  
 Time Test Ended: 11:41:00  
 Interval: **3182.00 ft (KB) To 3252.00 ft (KB) (TVD)**  
 Total Depth: 3252.00 ft (KB) (TVD)  
 Hole Diameter: 7.88 inches Hole Condition: Fair  
 Test Type: Conventional Bottom Hole (Initial)  
 Tester: GENE BUDIG  
 Unit No: 1-18  
 Reference Elevations: 1877.00 ft (KB)  
 1872.00 ft (CF)  
 KB to GR/CF: 5.00 ft

**Serial #: 9139 Outside**  
 Press@RunDepth: 74.47 psia @ 3241.78 ft (KB) Capacity: 5000.00 psia  
 Start Date: 2015.11.07 End Date: 2015.11.07 Last Calib.: 2015.11.08  
 Start Time: 19:06:45 End Time: 23:41:45 Time On Btm: 2015.11.07 @ 20:29:45  
 Time Off Btm: 2015.11.07 @ 22:19:15

**TEST COMMENT:** 1ST OPENING 30 MINUTES WEAK BLOW BUILT TO 1 INCH DECREASED AND DIED IN 15 MINUTE  
 1ST SHUT-IN 30 MINUTES-NO BLOW BACK  
 2ND OPENING 18 MINUTES-VERY WEAK SURFACE BLOW FOR 1 MINUTE AND DIED FLUSHED TOOL GOOD SURGE  
 VERY WEAK SURFACE BLOW FOR 2 MINUTES AND DIED



PRESSURE SUMMARY			
Time (Min.)	Pressure (psia)	Temp (deg F)	Annotation
0	1652.83	101.57	Initial Hydro-static
1	62.38	100.95	Open To Flow (1)
30	62.67	101.14	Shut-In(1)
60	73.06	101.59	End Shut-In(1)
79	64.77	102.00	End Shut-In(2)
109	74.47	102.71	End Shut-In(3)
110	1621.01	103.60	Final Hydro-static

Recovery		
Length (ft)	Description	Volume (bbl)

Gas Rates			
	Choke (inches)	Pressure (psia)	Gas Rate (Mcf/d)



# DRILL STEM TEST REPORT

RJM COMPANY  
 P.O. BOX 256  
 CLAFLIN, KANSAS 67525  
 ATTN: WYATT URBAN

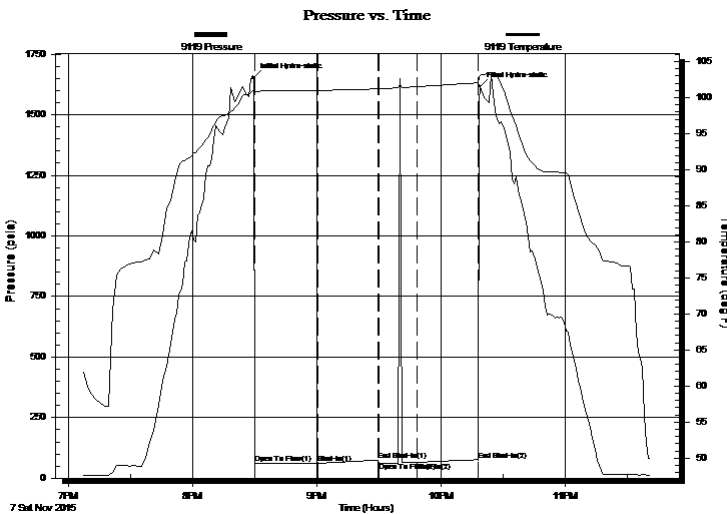
**12-19S-12W BARTON**  
**BARTON COUNTY 1**  
 Job Ticket: 01246 **DST#: 1**  
 Test Start: 2015.11.07 @ 07:06:00

## GENERAL INFORMATION:

Formation: **KANSAS CITY 'A-F'**  
 Deviated: No Whipstock: ft (KB)  
 Time Tool Opened: 08:30:00  
 Time Test Ended: 11:41:00  
 Interval: **3182.00 ft (KB) To 3252.00 ft (KB) (TVD)**  
 Total Depth: 3252.00 ft (KB) (TVD)  
 Hole Diameter: 7.88 inches Hole Condition: Fair  
 Test Type: Conventional Bottom Hole (Initial)  
 Tester: GENE BUDIG  
 Unit No: 1-18  
 Reference Elevations: 1877.00 ft (KB)  
 1872.00 ft (CF)  
 KB to GR/CF: 5.00 ft

**Serial #: 9119 Inside**  
 Press@RunDepth: 75.29 psia @ 3241.78 ft (KB) Capacity: 5000.00 psia  
 Start Date: 2015.11.07 End Date: 2015.11.07 Last Calib.: 2015.11.08  
 Start Time: 19:06:20 End Time: 23:41:20 Time On Btm: 2015.11.07 @ 20:29:20  
 Time Off Btm: 2015.11.07 @ 22:18:50

**TEST COMMENT:** 1ST OPENING 30 MINUTES WEAK BLOW BUILT TO 1 INCH DECREASED AND DIED IN 15 MINUTE  
 1ST SHUT-IN 30 MINUTES-NO BLOW BACK  
 2ND OPENING 18 MINUTES-VERY WEAK SURFACE BLOW FOR 1 MINUTE AND DIED FLUSHED TOOL GOOD SURGE  
 VERY WEAK SURFACE BLOW FOR 2 MINUTES AND DIED



PRESSURE SUMMARY			
Time (Min.)	Pressure (psia)	Temp (deg F)	Annotation
0	1653.81	101.09	Initial Hydro-static
1	60.77	100.76	Open To Flow (1)
31	62.20	101.03	Shut-In(1)
61	74.75	101.23	End Shut-In(1)
61	64.36	101.24	Open To Flow (2)
79	65.63	101.52	Shut-In(2)
109	75.29	102.08	End Shut-In(2)
110	1617.95	103.08	Final Hydro-static

Recovery		
Length (ft)	Description	Volume (bbl)

Gas Rates			
	Choke (inches)	Pressure (psia)	Gas Rate (Mcf/d)



# DRILL STEM TEST REPORT

TOOL DIAGRAM

RJM COMPANY  
 P.O. BOX 256  
 CLAFLIN, KANSAS 67525  
 ATTN: WYATT URBAN

**12-19S-12W BARTON**  
**BARTON COUNTY 1**  
 Job Ticket: 01246 **DST#: 1**  
 Test Start: 2015.11.07 @ 07:06:00

## Tool Information

Drill Pipe:	Length: 3171.00 ft	Diameter: 3.80 inches	Volume: 44.48 bbl	Tool Weight: 2000.00 lb
Heavy Wt. Pipe:	Length: 0.00 ft	Diameter: 0.00 inches	Volume: 0.00 bbl	Weight set on Packer: 20000.00 lb
Drill Collar:	Length: 0.00 ft	Diameter: 0.00 inches	Volume: 0.00 bbl	Weight to Pull Loose: 55000.00 lb
			Total Volume: 44.48 bbl	Tool Chased 0.00 ft
Drill Pipe Above KB:	9.00 ft			String Weight: Initial 40000.00 lb
Depth to Top Packer:	3182.00 ft			Final 40000.00 lb
Depth to Bottom Packer:	ft			
Interval between Packers:	64.78 ft			
Tool Length:	84.78 ft			
Number of Packers:	2	Diameter: 6.75 inches		

Tool Comments:

Tool Description	Length (ft)	Serial No.	Position	Depth (ft)	Accum. Lengths
Shut In Tool	5.00			3167.00	
Hydraulic tool	5.00			3172.00	
Top Packer	5.00			3177.00	
Packer	5.00			3182.00	20.00 Bottom Of Top Packer
Anchor	3.00			3185.00	
Change Over Sub	0.75			3185.75	
Drill Pipe	31.28			3217.03	
Change Over Sub	0.75			3217.78	
Anchor	24.00			3241.78	
Recorder	0.00	9119	Inside	3241.78	
Recorder	0.00	9139	Outside	3241.78	
Bullnose	5.00			3246.78	64.78 Anchor Tool

**Total Tool Length: 84.78**



# DRILL STEM TEST REPORT

**FLUID SUMMARY**

RJM COMPANY  
 P.O. BOX 256  
 CLAFLIN, KANSAS 67525  
 ATTN: WYATT URBAN

**12-19S-12W BARTON**  
**BARTON COUNTY 1**  
 Job Ticket: 01246      **DST#: 1**  
 Test Start: 2015.11.07 @ 07:06:00

## Mud and Cushion Information

Mud Type: Gel Chem	Cushion Type:	Oil API:	deg API
Mud Weight: 9.00 lb/gal	Cushion Length: ft	Water Salinity:	ppm
Viscosity: 53.00 sec/qt	Cushion Volume: bbl		
Water Loss: 8.00 in <sup>3</sup>	Gas Cushion Type:		
Resistivity: ohm.m	Gas Cushion Pressure: psia		
Salinity: 4000.00 ppm			
Filter Cake: 0.00 inches			

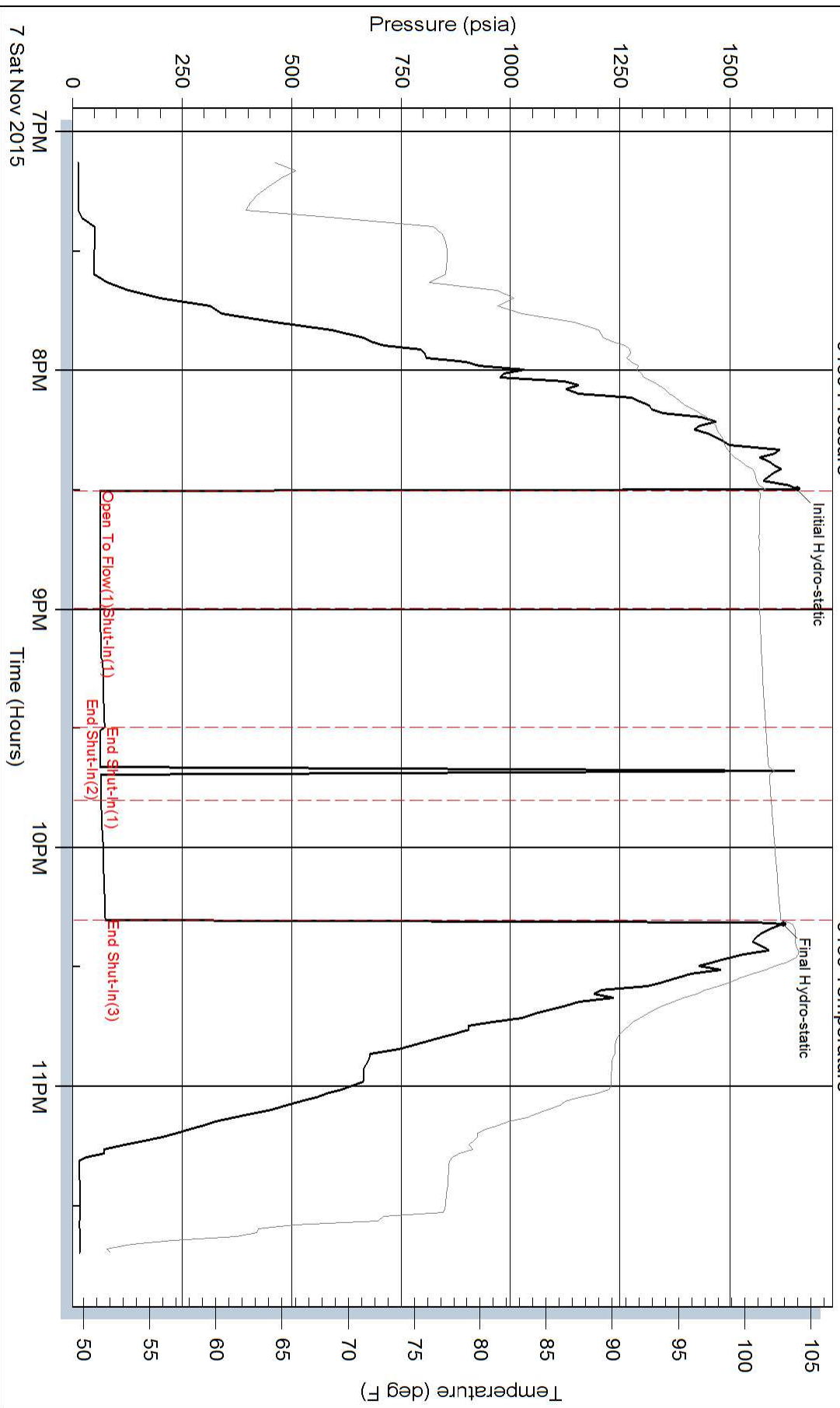
## Recovery Information

Recovery Table

Length ft	Description	Volume bbl

Total Length:                      ft      Total Volume:                      bbl  
 Num Fluid Samples: 0                      Num Gas Bombs:      0                      Serial #:  
 Laboratory Name:                      Laboratory Location:  
 Recovery Comments:

### Pressure vs. Time



### Pressure vs. Time

