



TRILOBITE TESTING, INC.

DRILL STEM TEST REPORT

Lario Oil & Gas Company

22-19s-33w Scott, KS

301 S. Market St
Wichita, KS 67202

Clawson #1-22

Job Ticket: 48265

DST#: 8

ATTN: Bob Bayer

Test Start: 2015.11.19 @ 14:05:43

GENERAL INFORMATION:

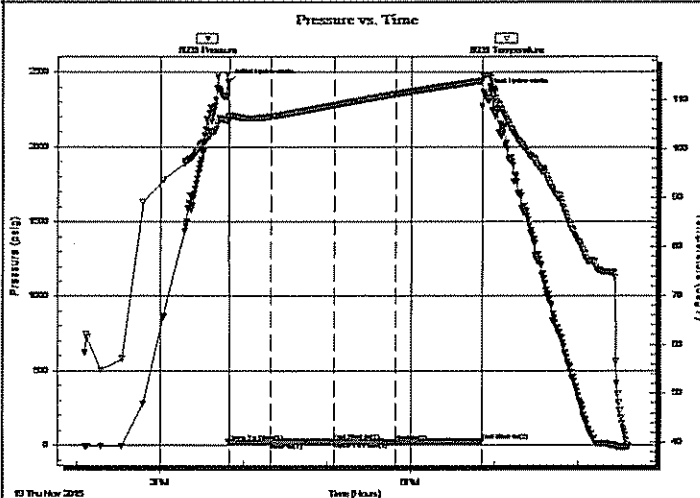
Formation: St Louis "B"
 Deviated: No Whipstock: 0.00 ft (KB)
 Time Tool Opened: 15:49:28
 Time Test Ended: 20:50:43
 Interval: 4652.00 ft (KB) To 4680.00 ft (KB) (TVD)
 Total Depth: 4680.00 ft (KB) (TVD)
 Hole Diameter: 8.75 inches
 Hole Condition: Fair
 Test Type: Conventional Bottom Hole (Reset)
 Tester: Shane McBride
 Unit No: 84
 Reference Elevations: 2973.00 ft (KB)
 2963.00 ft (CF)
 KB to GR/CF: 10.00 ft

Serial #: 8938

Inside

Press@RunDepth: 23.99 psig @ 4653.00 ft (KB)
 Start Date: 2015.11.19 End Date: 2015.11.19
 Start Time: 14:05:43 End Time: 20:36:43
 Capacity: 8000.00 psig
 Last Calib.: 2015.11.19
 Time On Btm: 2015.11.19 @ 15:49:13
 Time Off Btm: 2015.11.19 @ 18:51:58

TEST COMMENT: 1/4" in blow, died in 14 min.
 No return
 No blow
 No return



PRESSURE SUMMARY

Time (Min.)	Pressure (psig)	Temp (deg F)	Annotation
0	2431.64	106.57	Initial Hydro-static
1	23.72	105.62	Open To Flow (1)
31	24.83	106.55	Shut-In(1)
76	28.01	108.88	End Shut-In(1)
76	25.52	108.89	Open To Flow (2)
120	23.99	111.12	Shut-In(2)
182	26.60	113.87	End Shut-In(2)
183	2365.21	115.10	Final Hydro-static

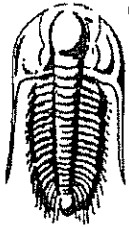
Recovery

Length (ft)	Description	Volume (bbl)
1.00	mud 100% m	0.01

* Recovery from multiple tests

Gas Rates

	Choke (inches)	Pressure (psig)	Gas Rate (Mcf/d)



**TRILOBITE
TESTING, INC.**

DRILL STEM TEST REPORT

FLUID SUMMARY

Lario Oil & Gas Company

22-19s-33w Scott,KS

301 S. Market St
Wichita,KS 67202

Clawson #1-22

Job Ticket: 48265

DST#: 8

ATTN: Bob Bayer

Test Start: 2015.11.19 @ 14:05:43

Mud and Cushion Information

Mud Type: Gel Chem

Cushion Type:

Oil API:

0 deg API

Mud Weight: 10.00 lb/gal

Cushion Length:

ft

Water Salinity:

0 ppm

Viscosity: 52.00 sec/qt

Cushion Volume:

bbf

Water Loss: 7.98 in³

Gas Cushion Type:

Resistivity: 0.00 ohm.m

Gas Cushion Pressure:

psig

Salinity: 4000.00 ppm

Filter Cake: 1.00 inches

Recovery Information

Recovery Table

Length ft	Description	Volume bbf
1.00	mud 100% _m	0.014

Total Length: 1.00 ft

Total Volume: 0.014 bbf

Num Fluid Samples: 0

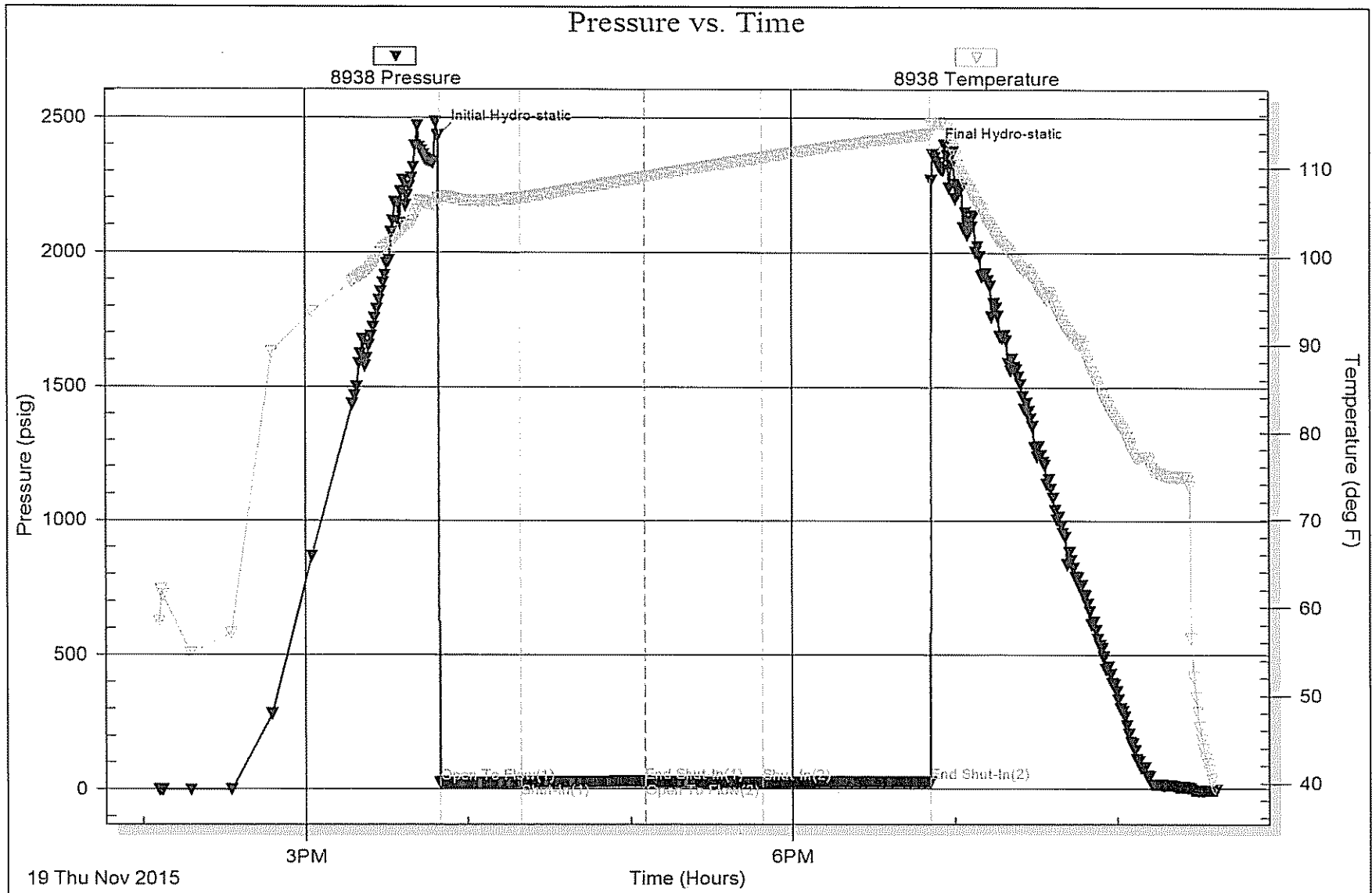
Num Gas Bombs: 0

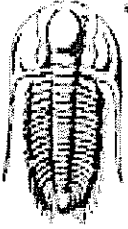
Serial #:

Laboratory Name:

Laboratory Location:

Recovery Comments:





**TRILOBITE
TESTING, INC.**

DRILL STEM TEST REPORT

Lario Oil & Gas Company

22-19s-33w Scott, KS

301 S. Market St
Wichita, KS 67202

Clawson #1-22

Job Ticket: 61793

DST#: 7

ATTN: Bob Bayer

Test Start: 2015.11.18 @ 19:46:17

GENERAL INFORMATION:

Formation: St. Louis B

Deviated: No Whipstock: ft (KB)

Time Tool Opened: 21:35:17

Time Test Ended: 03:53:47

Test Type: Conventional Bottom Hole (Reset)

Tester: Brandon Turley

Unit No: 79

Interval: 4618.00 ft (KB) To 4650.00 ft (KB) (TVD)

Total Depth: 4650.00 ft (KB) (TVD)

Hole Diameter: 8.75 inches Hole Condition: Good

Reference Elevations: 2973.00 ft (KB)

2963.00 ft (CF)

KB to GR/CF: 10.00 ft

Serial #: 8166

Outside

Press@RunDepth: 35.60 psig @ 4619.00 ft (KB)

Start Date: 2015.11.18

End Date:

2015.11.19

Start Time: 19:46:22

End Time:

03:53:46

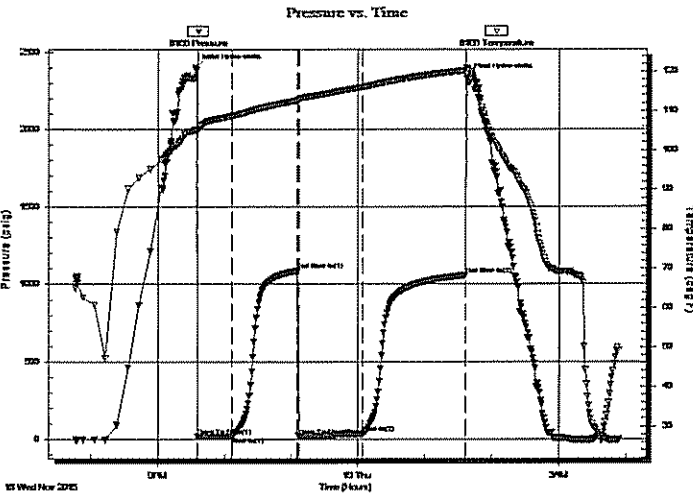
Capacity: 8000.00 psig

Last Calib.: 2015.11.19

Time On Btm: 2015.11.18 @ 21:33:47

Time Off Btm: 2015.11.19 @ 01:37:47

TEST COMMENT: IF: 1/4 blow built to 5.
IS: No return.
FF: BOB in 39 min.
FS: No return.



PRESSURE SUMMARY

Time (Min.)	Pressure (psig)	Temp (deg F)	Annotation
0	2399.12	105.11	Initial Hydro-static
2	17.27	104.76	Open To Flow (1)
33	19.67	108.69	Shut-In(1)
92	1088.85	112.68	End Shut-In(1)
93	22.86	112.93	Open To Flow (2)
151	35.60	116.07	Shut-In(2)
243	1057.83	120.25	End Shut-In(2)
244	2337.24	120.62	Final Hydro-static

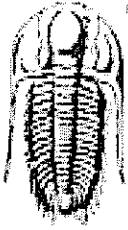
Recovery

Length (ft)	Description	Volume (bbl)
33.00	gocm 10%g 10%o 80%m	0.46
30.00	free oil 100%o	0.42
0.00	310 GIP	0.00

* Recovery from multiple tests

Gas Rates

	Choke (inches)	Pressure (psig)	Gas Rate (Mcf/d)



**TRILOBITE
TESTING, INC.**

DRILL STEM TEST REPORT

FLUID SUMMARY

Lario Oil & Gas Company

22-19s-33w Scott,KS

301 S. Market St
Wichita,KS 67202

Clawson #1-22

Job Ticket: 61793

DST#: 7

ATTN: Bob Bayer

Test Start: 2015.11.18 @ 19:46:17

Mud and Cushion Information

Mud Type: Gel Chem

Cushion Type:

Oil API:

0 deg API

Mud Weight: 10.00 lb/gal

Cushion Length:

ft

Water Salinity:

0 ppm

Viscosity: 50.00 sec/qt

Cushion Volume:

bbf

Water Loss: 8.79 in²

Gas Cushion Type:

Resistivity: 0.00 ohm.m

Gas Cushion Pressure:

psig

Salinity: 4300.00 ppm

Filter Cake: 2.00 inches

Recovery Information

Recovery Table

Length ft	Description	Volume bbf
33.00	gocm 10%g 10%o 80%w	0.463
30.00	free oil 100%o	0.421
0.00	310 GIP	0.000

Total Length: 63.00 ft

Total Volume: 0.884 bbf

Num Fluid Samples: 0

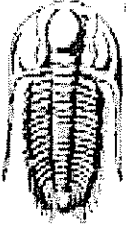
Num Gas Bombs: 0

Serial #:

Laboratory Name:

Laboratory Location:

Recovery Comments:



**TRILOBITE
TESTING, INC.**

DRILL STEM TEST REPORT

Lario Oil & Gas Company

22-19s-33w Scott, Ks

301 S. Market St
Wichita, Ks 67202

Clawson 1-22

Job Ticket: 61792

DST#: 6

ATTN: Bob Bayer

Test Start: 2015.11.17 @ 23:40:43

GENERAL INFORMATION:

Formation: **Johnson**

Deviated: No Whipstock: ft (KB)

Time Tool Opened: 01:39:43

Time Test Ended: 06:32:43

Test Type: Conventional Bottom Hole (Reset)

Tester: Brandon Turley

Unit No: 79

Interval: 4500.00 ft (KB) To 4575.00 ft (KB) (TVD)

Total Depth: 4575.00 ft (KB) (TVD)

Hole Diameter: 8.75 inches Hole Condition: Good

Reference Elevations: 2973.00 ft (KB)

2963.00 ft (CF)

KB to GR/CF: 10.00 ft

Serial #: 8166

Outside

Press@RunDepth: 93.10 psig @ 4501.00 ft (KB)

Capacity: 8000.00 psig

Start Date: 2015.11.17 End Date: 2015.11.18

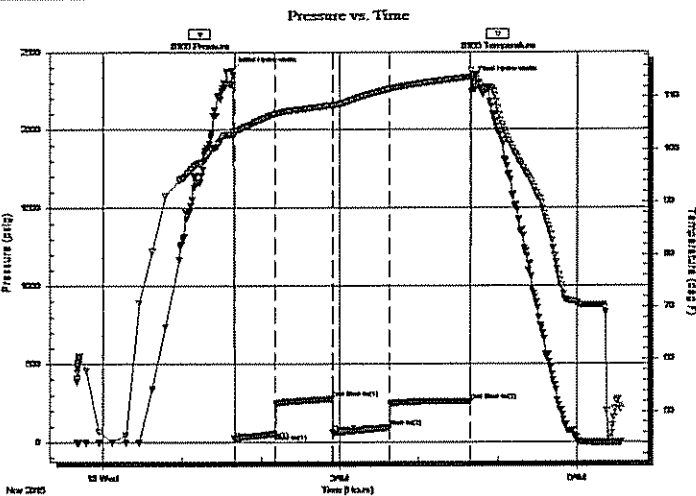
Last Calib.: 2015.11.18

Start Time: 23:40:48 End Time: 06:32:42

Time On Btm: 2015.11.18 @ 01:37:43

Time Off Btm: 2015.11.18 @ 04:40:43

TEST COMMENT: IF: 1/4 blow built to 7.
IS: No return.
FF: Surface blow built to 6.
FS: No return.



PRESSURE SUMMARY

Time (Min.)	Pressure (psig)	Temp (deg F)	Annotation
0	2381.45	102.91	Initial Hydro-static
2	22.22	102.91	Open To Flow (1)
33	55.23	106.73	Shut-In(1)
77	277.30	108.48	End Shut-In(1)
77	59.87	108.42	Open To Flow (2)
120	93.10	111.48	Shut-In(2)
182	261.91	113.80	End Shut-In(2)
183	2319.88	113.97	Final Hydro-static

Recovery

Length (ft)	Description	Volume (bbl)
62.00	w cm 5%w 95%m	0.87
92.00	mud 100%m	1.29

* Recovery from multiple tests

Gas Rates

	Choke (inches)	Pressure (psig)	Gas Rate (Mcf/d)



TRILOBITE
TESTING, INC.

DRILL STEM TEST REPORT

FLUID SUMMARY

Lario Oil & Gas Company

22-19s-33w Scott, Ks

301 S. Market St
Wichita, Ks 67202

Clawson 1-22

Job Ticket: 61792

DST#: 6

ATTN: Bob Bayer

Test Start: 2015.11.17 @ 23:40:43

Mud and Cushion Information

Mud Type: Gel Chem

Mud Weight: 10.00 lb/gal

Viscosity: 56.00 sec/qt

Water Loss: 9.59 in³

Resistivity: 0.00 ohm.m

Salinity: 5000.00 ppm

Filter Cake: 1.00 inches

Cushion Type:

Cushion Length: ft

Cushion Volume: bbl

Gas Cushion Type:

Gas Cushion Pressure: psig

Oil API:

Water Salinity:

0 deg API

0 ppm

Recovery Information

Recovery Table

Length ft	Description	Volume bbl
62.00	w cm 5%w 95%m	0.870
92.00	mud 100%m	1.291

Total Length: 154.00 ft

Total Volume: 2.161 bbl

Num Fluid Samples: 0

Num Gas Bombs: 0

Serial #:

Laboratory Name:

Laboratory Location:

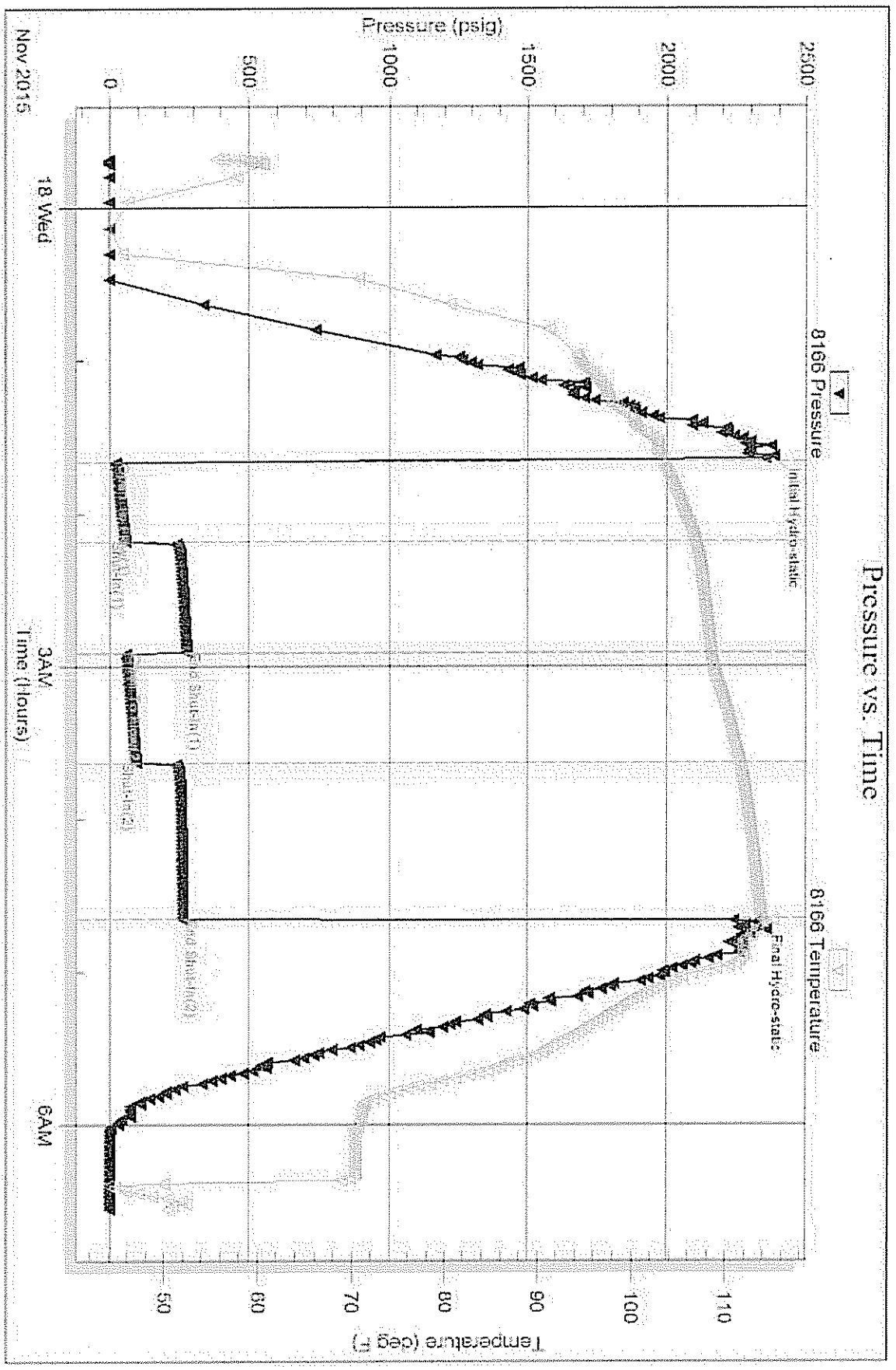
Recovery Comments:

Serial #: 8166

Outside: Larjo Oil & Gas Company

Claw son 1-22

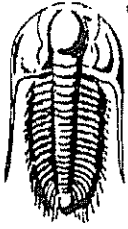
DST Test Number: 6



Tribble Testing, Inc

Ref. No. 81792

Printed: 2015-11-18 @ 08:03:13



TRILOBITE TESTING, INC.

DRILL STEM TEST REPORT

Lario Oil & Gas Company

22-19s-33w Scott, Ks

301 S. Market St
Wichita, Ks 67202

Clawson 1-22

Job Ticket: 61791

DST#: 5

ATTN: Bob Bayer

Test Start: 2015.11.16 @ 17:01:06

GENERAL INFORMATION:

Formation: **Marmaton C Pawnee**

Deviated: No Whipstock: ft (KB)

Time Tool Opened: 19:18:36

Time Test Ended: 00:00:06

Test Type: Conventional Bottom Hole (Reset)

Tester: Brandon Turley

Unit No: 79

Interval: 4360.00 ft (KB) To 4416.00 ft (KB) (TVD)

Total Depth: 4416.00 ft (KB) (TVD)

Hole Diameter: 8.75 inches Hole Condition: Good

Reference Elevations: 2973.00 ft (KB)

2963.00 ft (CF)

KB to GR/CF: 10.00 ft

Serial #: 8166

Outside

Press@RunDepth: 19.33 psig @ 4361.00 ft (KB)

Capacity: 8000.00 psig

Start Date: 2015.11.16

End Date:

2015.11.17

Last Calib.: 2015.11.17

Start Time: 17:01:11

End Time:

00:00:05

Time On Btm: 2015.11.16 @ 19:17:06

Time Off Btm: 2015.11.16 @ 21:49:06

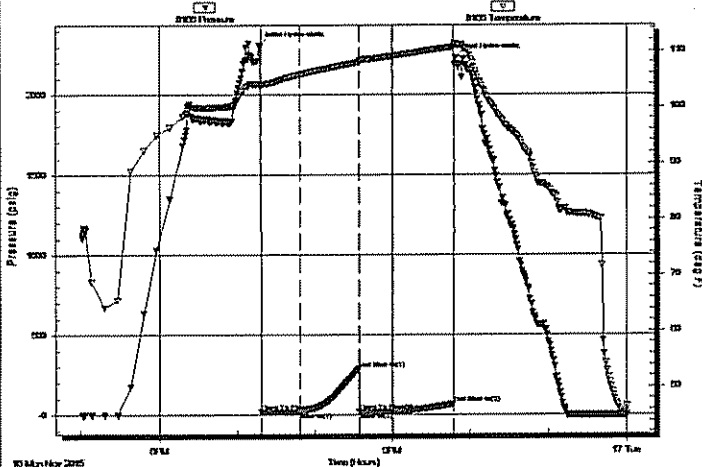
TEST COMMENT: IF: 1/4 blow died in 9 min.

IS: No return.

FF: No blow.

FS: No return.

Pressure vs. Time



PRESSURE SUMMARY

Time (Mn.)	Pressure (psig)	Temp (deg F)	Annotation
0	2306.83	103.96	Initial Hydro-static
2	18.61	103.83	Open To Flow (1)
32	19.16	105.73	Shut-In(1)
77	286.32	107.88	End Shut-In(1)
78	19.68	107.89	Open To Flow (2)
104	19.33	109.02	Shut-In(2)
151	68.35	110.66	End Shut-In(2)
152	2229.51	111.01	Final Hydro-static

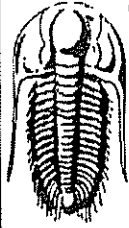
Recovery

Length (ft)	Description	Volume (bbl)
5.00	mud oil spots 100% m	0.07

* Recovery from multiple tests

Gas Rates

	Choke (Inches)	Pressure (psig)	Gas Rate (Mcf/d)



**TRILOBITE
TESTING, INC.**

DRILL STEM TEST REPORT

FLUID SUMMARY

Lario Oil & Gas Company

22-19s-33w Scott, Ks

301 S. Market St
Wichita, Ks 67202

Clawson 1-22

Job Ticket: 61791

DST#: 5

ATTN: Bob Bayer

Test Start: 2015.11.16 @ 17:01:06

Mud and Cushion Information

Mud Type: Gel Chem

Cushion Type:

Oil API:

0 deg API

Mud Weight: 10.00 lb/gal

Cushion Length:

ft

Water Salinity:

0 ppm

Viscosity: 51.00 sec/qt

Cushion Volume:

bbl

Water Loss: 8.79 in³

Gas Cushion Type:

Resistivity: 0.00 ohm.m

Gas Cushion Pressure:

psig

Salinity: 4000.00 ppm

Filter Cake: 2.00 inches

Recovery Information

Recovery Table

Length ft	Description	Volume bbl
5.00	mud oil spots 100%m	0.070

Total Length: 5.00 ft Total Volume: 0.070 bbl

Num Fluid Samples: 0

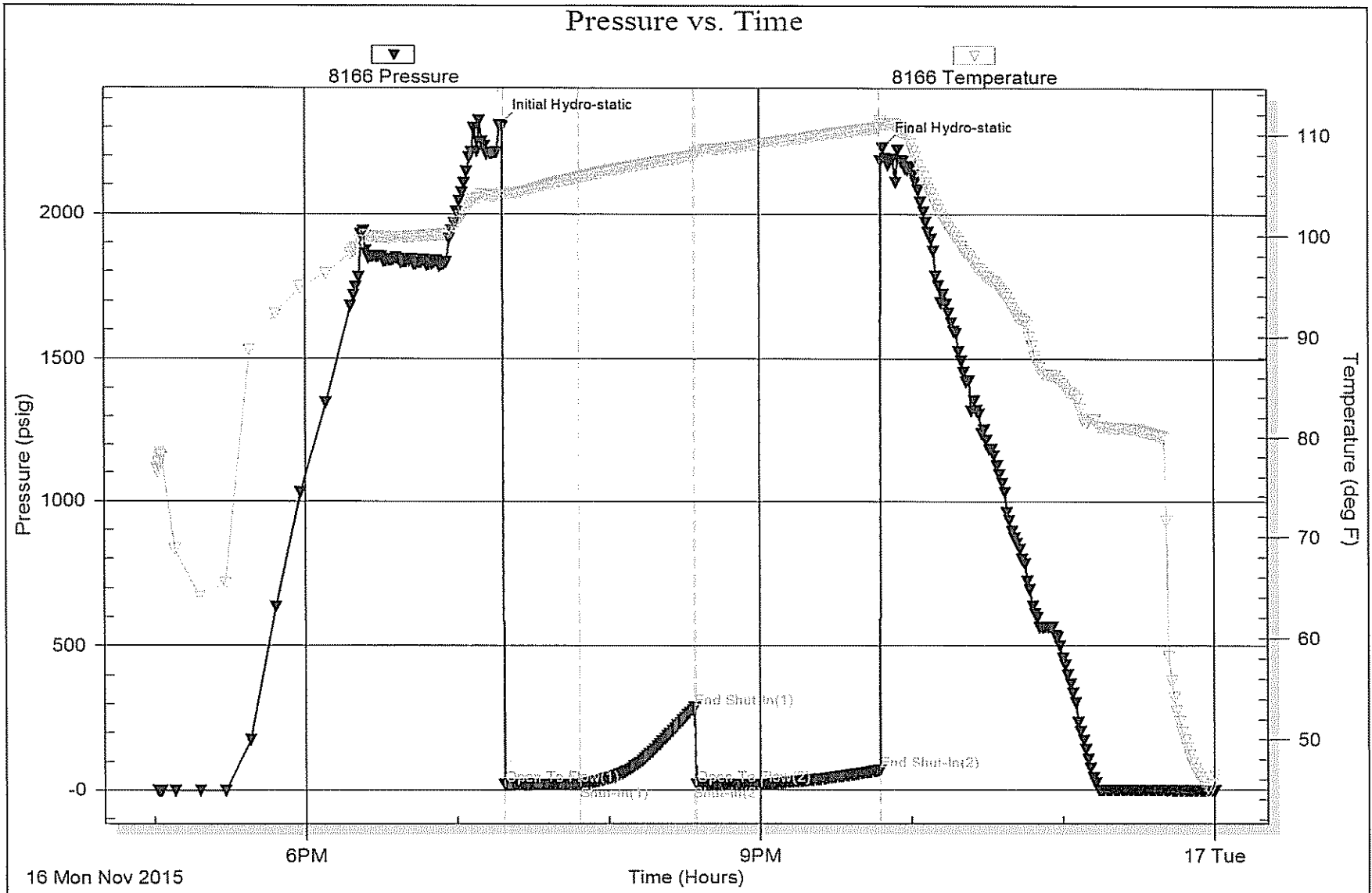
Num Gas Bombs: 0

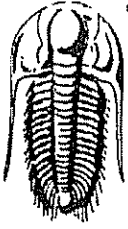
Serial #:

Laboratory Name:

Laboratory Location:

Recovery Comments:





**TRILOBITE
TESTING, INC.**

DRILL STEM TEST REPORT

Lario Oil & Gas Company

22-19s-33w Scott, Ks

301 S. Market St
Wichita, Ks 67202

Clawson 1-22

Job Ticket: 61790

DST#: 4

ATTN: Bob Bayer

Test Start: 2015.11.15 @ 22:24:13

GENERAL INFORMATION:

Formation: **Marmaton B**

Deviated: No Whipstock: ft (KB)

Time Tool Opened: 23:59:13

Time Test Ended: 04:37:43

Test Type: Conventional Bottom Hole (Reset)

Tester: Brandon Turley

Unit No: 79

Interval: **4336.00 ft (KB) To 4360.00 ft (KB) (TVD)**

Reference Elevations: 2973.00 ft (KB)

Total Depth: 4360.00 ft (KB) (TVD)

2963.00 ft (CF)

Hole Diameter: 8.75 inches Hole Condition: Good

KB to GR/CF: 10.00 ft

Serial #: **8166** Outside

Press@RunDepth: 43.27 psig @ 4337.00 ft (KB)

Capacity: 8000.00 psig

Start Date: 2015.11.15

End Date: 2015.11.16

Last Calib.: 2015.11.16

Start Time: 22:24:18

End Time: 04:37:42

Time On Btm: 2015.11.15 @ 23:57:43

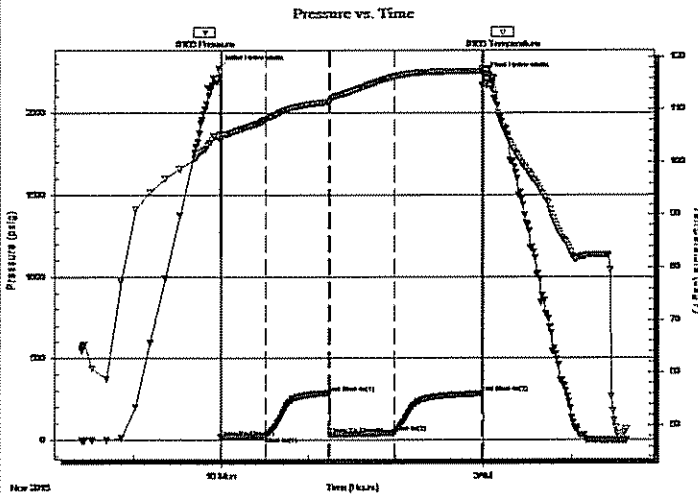
Time Off Btm: 2015.11.16 @ 03:00:13

TEST COMMENT: IF: 1/4 blow BOB in 26 min.

IS: No return.

FF: BOB in 23 min.

FS: No return.



PRESSURE SUMMARY

Time (Min.)	Pressure (psig)	Temp (deg F)	Annotation
0	2273.54	104.91	Initial Hydro-static
2	15.52	104.07	Open To Flow (1)
32	26.02	108.03	Shut-In(1)
76	286.25	111.37	End Shut-In(1)
77	29.34	111.49	Open To Flow (2)
121	43.27	116.19	Shut-In(2)
181	283.04	117.28	End Shut-In(2)
183	2226.79	117.33	Final Hydro-static

Recovery

Length (ft)	Description	Volume (bbl)
62.00	gocm 40%g 10%o 50%m	0.87
15.00	ocm 10%o 90%m	0.21
0.00	310 GIP	0.00

* Recovery from multiple tests

Gas Rates

	Choke (Inches)	Pressure (psig)	Gas Rate (Mcf/d)



**TRILOBITE
TESTING, INC**

DRILL STEM TEST REPORT

FLUID SUMMARY

Lario Oil & Gas Company

22-19s-33w Scott, Ks

301 S. Market St
Wichita, Ks 67202

Clawson 1-22

Job Ticket: 61790

DST#: 4

ATTN: Bob Bayer

Test Start: 2015.11.15 @ 22:24:13

Mud and Cushion Information

Mud Type: Gel Chem

Cushion Type:

Oil API:

0 deg API

Mud Weight: 10.00 lb/gal

Cushion Length: ft

Water Salinity:

0 ppm

Viscosity: 51.00 sec/qt

Cushion Volume: bbl

Water Loss: 8.79 in³

Gas Cushion Type:

Resistivity: 0.00 ohm.m

Gas Cushion Pressure: psig

Salinity: 4500.00 ppm

Filter Cake: 1.00 inches

Recovery Information

Recovery Table

Length ft	Description	Volume bbl
62.00	gocm 40%g 10%o 50%m	0.870
15.00	ocm 10%o 90%m	0.210
0.00	310 GIP	0.000

Total Length: 77.00 ft Total Volume: 1.080 bbl

Num Fluid Samples: 0

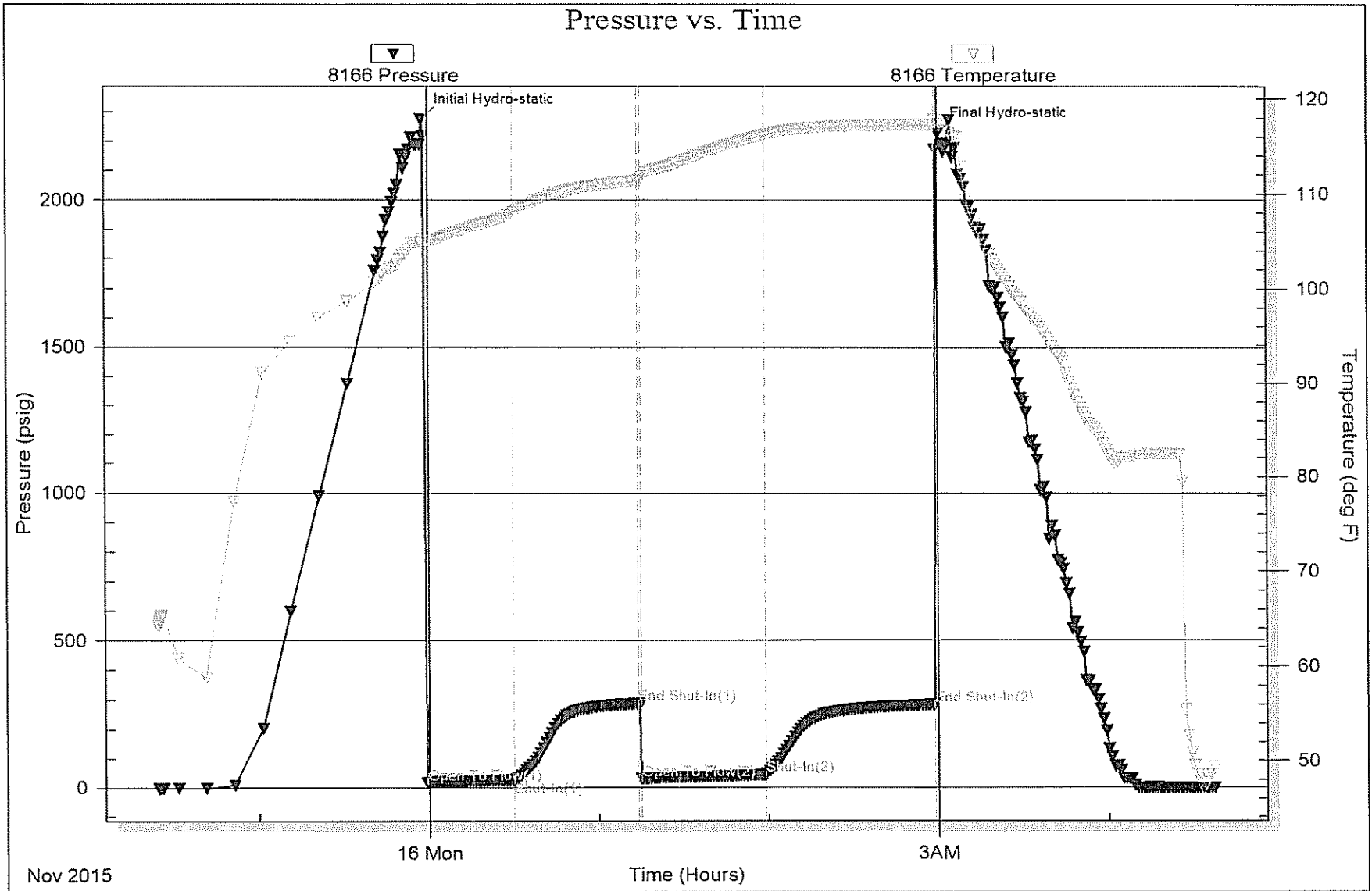
Num Gas Bombs: 0

Serial #:

Laboratory Name:

Laboratory Location:

Recovery Comments:





**TRILOBITE
TESTING, INC.**

DRILL STEM TEST REPORT

Lario Oil & Gas Company

22-19s-33w Scott, Ks

301 S. Market St
Wichita, Ks 67202

Clawson 1-22

Job Ticket: 61790

DST#: 4

ATTN: Bob Bayer

Test Start: 2015.11.15 @ 22:24:13

GENERAL INFORMATION:

Formation: Marmaton B

Deviated: No Whipstock: ft (KB)

Time Tool Opened: 23:59:13

Time Test Ended: 04:37:43

Test Type: Conventional Bottom Hole (Reset)

Tester: Brandon Turley

Unit No: 79

Interval: 4336.00 ft (KB) To 4360.00 ft (KB) (TVD)

Total Depth: 4360.00 ft (KB) (TVD)

Hole Diameter: 8.75 inches Hole Condition: Good

Reference Elevations: 2973.00 ft (KB)

2963.00 ft (CF)

KB to GR/CF: 10.00 ft

Serial #: 8166 Outside

Press@RunDepth: 43.27 psig @ 4337.00 ft (KB)

Start Date: 2015.11.15

End Date: 2015.11.16

Start Time: 22:24:18

End Time: 04:37:42

Capacity: 8000.00 psig

Last Calib.: 2015.11.16

Time On Btm: 2015.11.15 @ 23:57:43

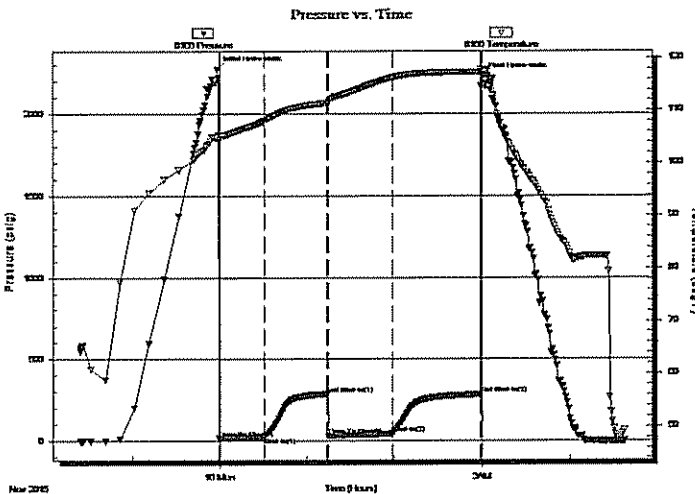
Time Off Btm: 2015.11.16 @ 03:00:13

TEST COMMENT: IF: 1/4 blow BOB in 26 min.

IS: No return.

FF: BOB in 23 min.

FS: No return.



PRESSURE SUMMARY

Time (Min.)	Pressure (psig)	Temp (deg F)	Annotation
0	2273.54	104.91	Initial Hydro-static
2	15.52	104.07	Open To Flow (1)
32	26.02	108.03	Shut-In(1)
76	286.25	111.37	End Shut-In(1)
77	29.34	111.49	Open To Flow (2)
121	43.27	116.19	Shut-In(2)
181	283.04	117.28	End Shut-In(2)
183	2226.79	117.33	Final Hydro-static

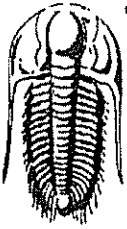
Recovery

Length (ft)	Description	Volume (bbl)
62.00	gocm 40%g 10%o 50%m	0.87
15.00	ocm 10%o 90%m	0.21
0.00	310 GIP	0.00

* Recovery from multiple tests

Gas Rates

Choke (inches)	Pressure (psig)	Gas Rate (Mcf/d)



TRILOBITE
TESTING, INC

DRILL STEM TEST REPORT

FLUID SUMMARY

Lario Oil & Gas Company

22-19s-33w Scott, Ks

301 S. Market St
Wichita, Ks 67202

Clawson 1-22

Job Ticket: 61790

DST#: 4

ATTN: Bob Bayer

Test Start: 2015.11.15 @ 22:24:13

Mud and Cushion Information

Mud Type: Gel Chem

Cushion Type:

Oil API:

0 deg API

Mud Weight: 10.00 lb/gal

Cushion Length:

ft

Water Salinity:

0 ppm

Viscosity: 51.00 sec/qt

Cushion Volume:

bbf

Water Loss: 8.79 in³

Gas Cushion Type:

Resistivity: 0.00 ohm.m

Gas Cushion Pressure:

psig

Salinity: 4500.00 ppm

Filter Cake: 1.00 inches

Recovery Information

Recovery Table

Length ft	Description	Volume bbf
62.00	gocm 40%g 10%o 50%m	0.870
15.00	ocm 10%o 90%m	0.210
0.00	310 GIP	0.000

Total Length: 77.00 ft Total Volume: 1.080 bbf

Num Fluid Samples: 0

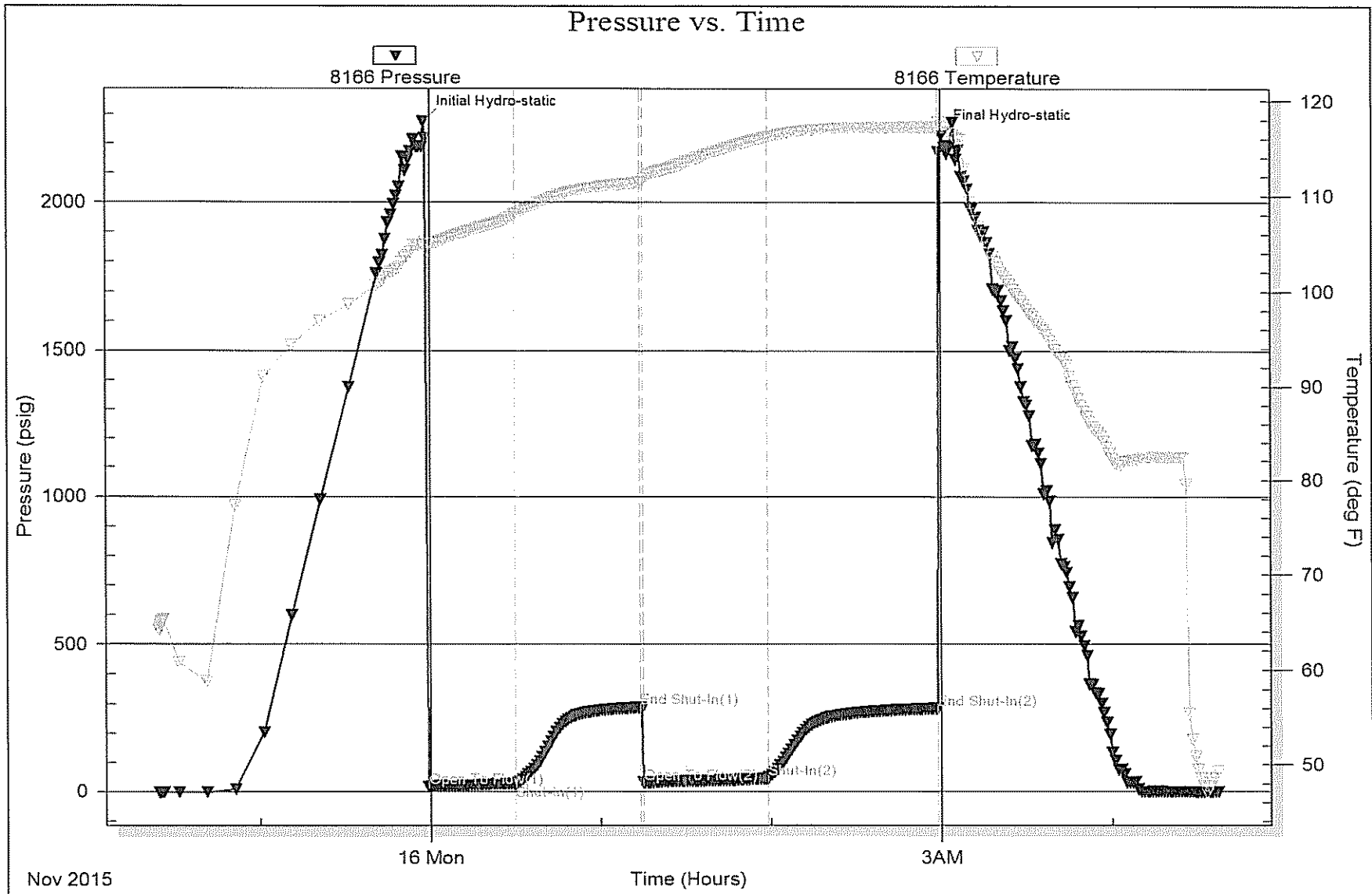
Num Gas Bombs: 0

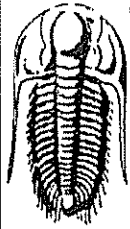
Serial #:

Laboratory Name:

Laboratory Location:

Recovery Comments:





**TRILOBITE
TESTING, INC**

DRILL STEM TEST REPORT

Lario Oil & Gas Company

22-19s-33w Scott, Ks

301 S. Market St
Wichita, Ks 67202

Clawson 1-22

Job Ticket: 61789

DST#: 3

ATTN: Bob Bayer

Test Start: 2015.11.13 @ 23:35:37

GENERAL INFORMATION:

Formation: LKC C&D

Deviated: No Whipstock: ft (KB)

Time Tool Opened: 01:09:37

Time Test Ended: 07:15:37

Test Type: Conventional Bottom Hole (Reset)

Tester: Brandon Turley

Unit No: 79

Interval: 3950.00 ft (KB) To 4015.00 ft (KB) (TVD)

Total Depth: 4015.00 ft (KB) (TVD)

Hole Diameter: 8.75 inches Hole Condition: Good

Reference Elevations: 2973.00 ft (KB)

2963.00 ft (CF)

KB to GR/CF: 10.00 ft

Serial #: 8166

Outside

Press@RunDepth: 386.00 psig @ 3951.00 ft (KB)

Capacity: 8000.00 psig

Start Date: 2015.11.13

End Date:

2015.11.14

Last Calib.: 2015.11.14

Start Time: 23:35:42

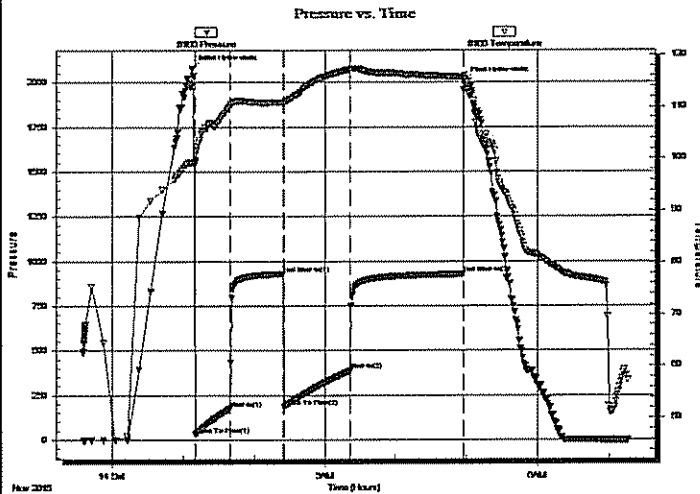
End Time:

07:15:36

Time On Btm: 2015.11.14 @ 01:07:37

Time Off Btm: 2015.11.14 @ 04:58:07

TEST COMMENT: IF: BOB in 8 min.
IS: No return.
FF: BOB in 11 min.
FS: No return.



PRESSURE SUMMARY

Time (Min.)	Pressure (psig)	Temp (deg F)	Annotation
0	2078.29	99.22	Initial Hydro-static
2	28.84	98.91	Open To Flow (1)
32	175.10	110.06	Shut-In(1)
77	929.21	110.90	End Shut-In(1)
78	183.36	110.75	Open To Flow (2)
134	386.00	117.22	Shut-In(2)
230	927.04	115.71	End Shut-In(2)
231	2008.43	116.08	Final Hydro-static

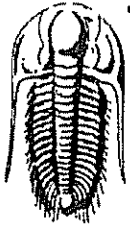
Recovery

Length (ft)	Description	Volume (bbl)
310.00	mcw 80%w 20%m	4.35
186.00	mcw 60%w 40%m	2.61
293.00	mw 50%w 50%m	4.11

* Recovery from multiple tests

Gas Rates

	Choke (Inches)	Pressure (psig)	Gas Rate (Mcf/d)



**TRILOBITE
TESTING, INC.**

DRILL STEM TEST REPORT

FLUID SUMMARY

Lario Oil & Gas Company

22-19s-33w Scott, Ks

301 S. Market St
Wichita, Ks 67202

Clawson 1-22

Job Ticket: 61789

DST#: 3

ATTN: Bob Bayer

Test Start: 2015.11.13 @ 23:35:37

Mud and Cushion Information

Mud Type: Gel Chem

Cushion Type:

Oil API:

0 deg API

Mud Weight: 9.00 lb/gal

Cushion Length:

ft

Water Salinity:

44000 ppm

Viscosity: 56.00 sec/qt

Cushion Volume:

bbf

Water Loss: 7.20 in³

Gas Cushion Type:

Resistivity: 0.00 ohm.m

Gas Cushion Pressure:

psig

Salinity: 3100.00 ppm

Filter Cake: 1.00 inches

Recovery Information

Recovery Table

Length ft	Description	Volume bbf
310.00	mcw 80%w 20%m	4.348
186.00	mcw 60%w 40%m	2.609
293.00	mw 50%w 50%m	4.110

Total Length: 789.00 ft Total Volume: 11.067 bbf

Num Fluid Samples: 0

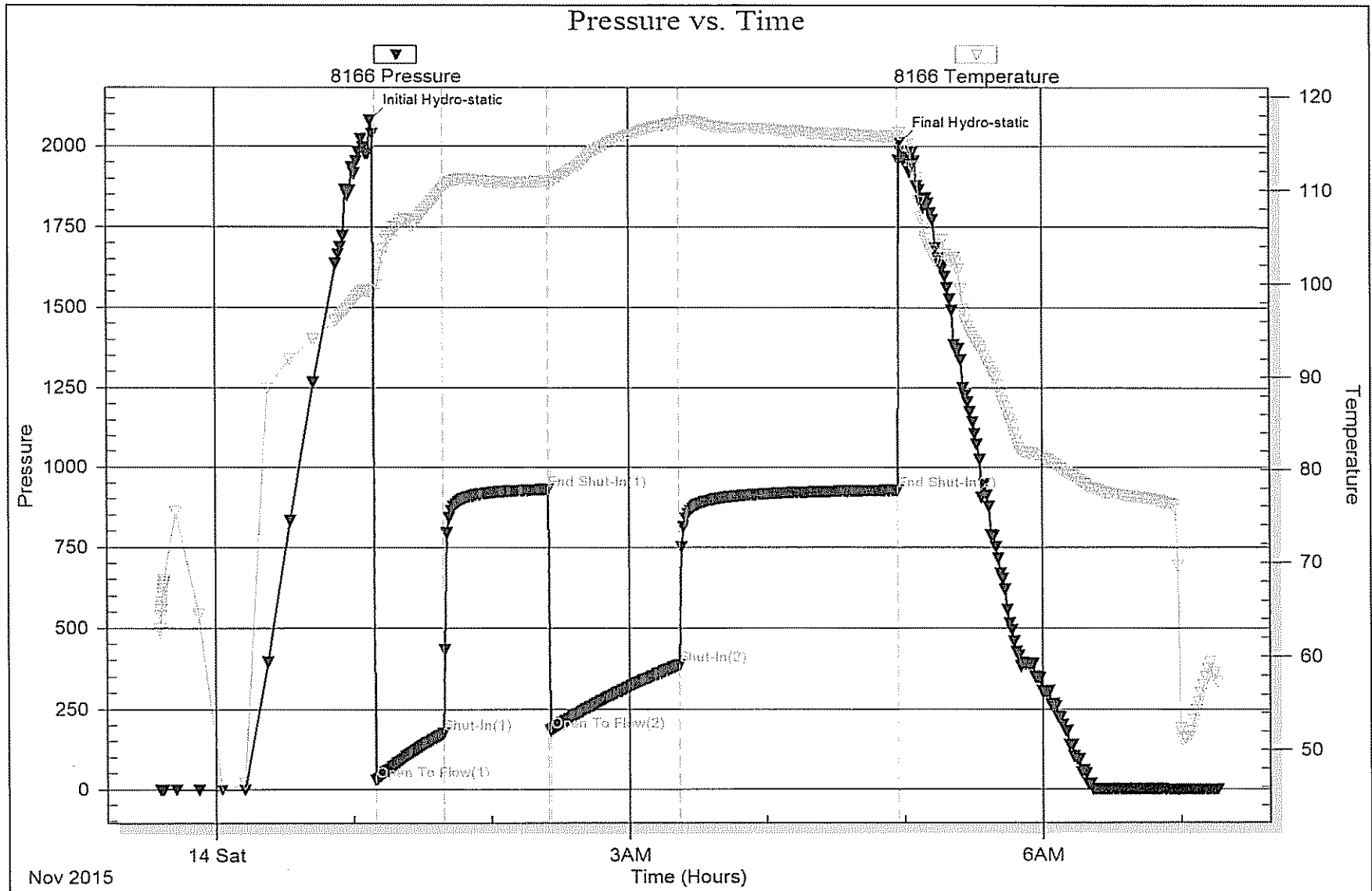
Num Gas Bombs: 0

Serial #:

Laboratory Name:

Laboratory Location:

Recovery Comments: .29@39=44000



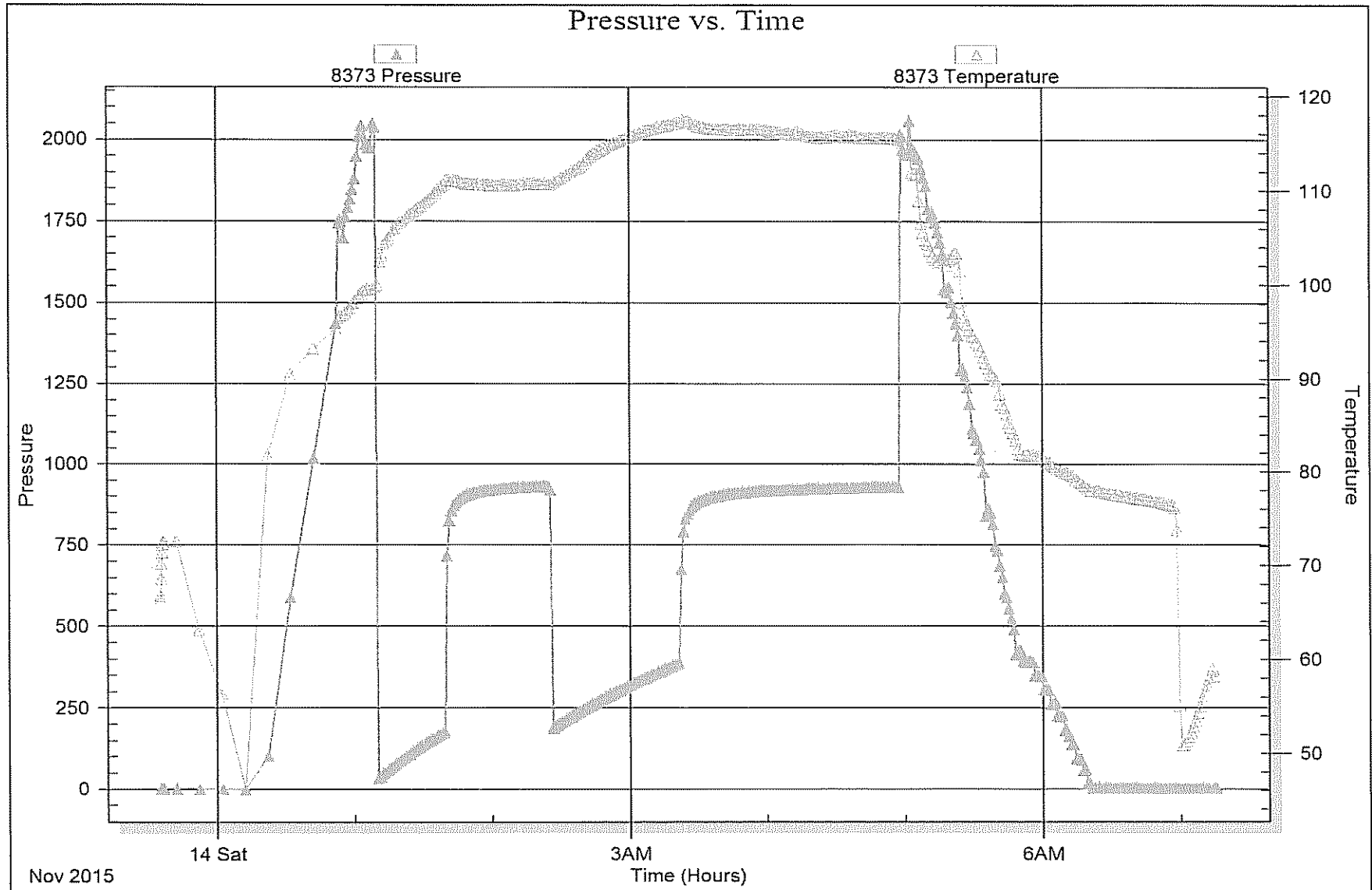
Serial #: 8373

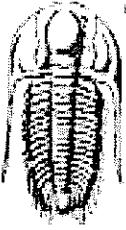
Inside

Lario Oil & Gas Company

Claw son 1-22

DST Test Number: 3





**TRILOBITE
TESTING, INC.**

DRILL STEM TEST REPORT

Lario Oil & Gas Company

22-19s-33w Scott, Ks

301 S. Market St
Wichita, Ks 67202

Clawson 1-22

Job Ticket: 61788

DST#: 2

ATTN: Bob Bayer

Test Start: 2015.11.13 @ 05:41:39

GENERAL INFORMATION:

Formation: LKC B

Deviated: No Whipstock: ft (KB)

Time Tool Opened: 07:33:09

Time Test Ended: 11:41:09

Test Type: Conventional Bottom Hole (Reset)

Tester: Brandon Turley

Unit No: 79

Interval: 3920.00 ft (KB) To 3945.00 ft (KB) (TVD)

Total Depth: 3945.00 ft (KB) (TVD)

Hole Diameter: 8.75 inches Hole Condition: Good

Reference Elevations: 2973.00 ft (KB)

2963.00 ft (CF)

KB to GR/CF: 10.00 ft

Serial #: 8166

Outside

Press@RunDepth: 18.57 psig @ 3921.00 ft (KB)

Start Date: 2015.11.13

End Date: 2015.11.13

Start Time: 05:41:44

End Time: 11:41:08

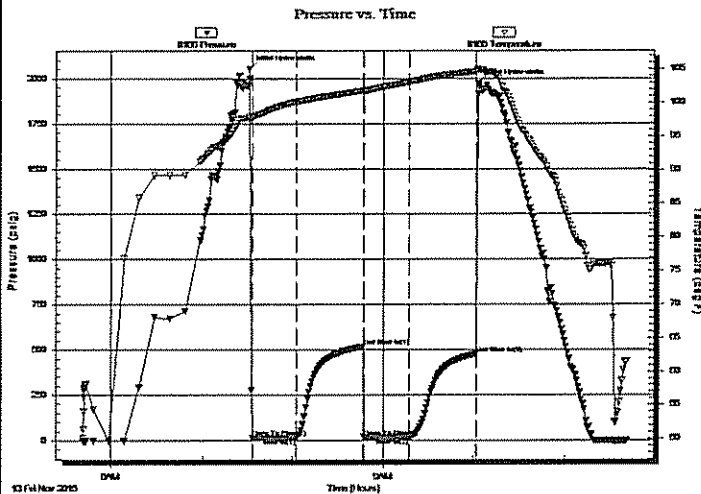
Capacity: 8000.00 psig

Last Calib.: 2015.11.13

Time On Btm: 2015.11.13 @ 07:31:09

Time Off Btm: 2015.11.13 @ 10:03:09

TEST COMMENT: IF: Surface blow died in 6 min.
IS: No return.
FF: No blow.
FS: No return.



PRESSURE SUMMARY

Time (Min.)	Pressure (psig)	Temp (deg F)	Annotation
0	2052.34	97.72	Initial Hydro-static
2	17.80	97.73	Open To Flow (1)
31	17.78	100.09	Shut-In(1)
76	517.08	101.78	End Shut-In(1)
76	18.66	101.52	Open To Flow (2)
106	18.57	103.07	Shut-In(2)
151	476.60	104.65	End Shut-In(2)
152	1971.13	104.85	Final Hydro-static

Recovery

Length (ft)	Description	Volume (bbl)
5.00	mud oil spots 100%m	0.07

* Recovery from multiple tests

Gas Rates

	Choke (inches)	Pressure (psig)	Gas Rate (Mcf/d)



**TRILOBITE
TESTING, INC**

DRILL STEM TEST REPORT

FLUID SUMMARY

Lario Oil & Gas Company

22-19s-33w Scott, Ks

301 S. Market St
Wichita, Ks 67202

Clawson 1-22

Job Ticket: 61788

DST#: 2

ATTN: Bob Bayer

Test Start: 2015.11.13 @ 05:41:39

Mud and Cushion Information

Mud Type: Gel Chem

Cushion Type:

Oil API:

0 deg API

Mud Weight: 9.00 lb/gal

Cushion Length:

ft

Water Salinity:

0 ppm

Viscosity: 57.00 sec/qt

Cushion Volume:

bbbl

Water Loss: 7.19 in³

Gas Cushion Type:

Resistivity: 0.00 ohm.m

Gas Cushion Pressure:

psig

Salinity: 4000.00 ppm

Filter Cake: 1.00 inches

Recovery Information

Recovery Table

Length ft	Description	Volume bbbl
5.00	mud oil spots 100%m	0.070

Total Length: 5.00 ft

Total Volume: 0.070 bbl

Num Fluid Samples: 0

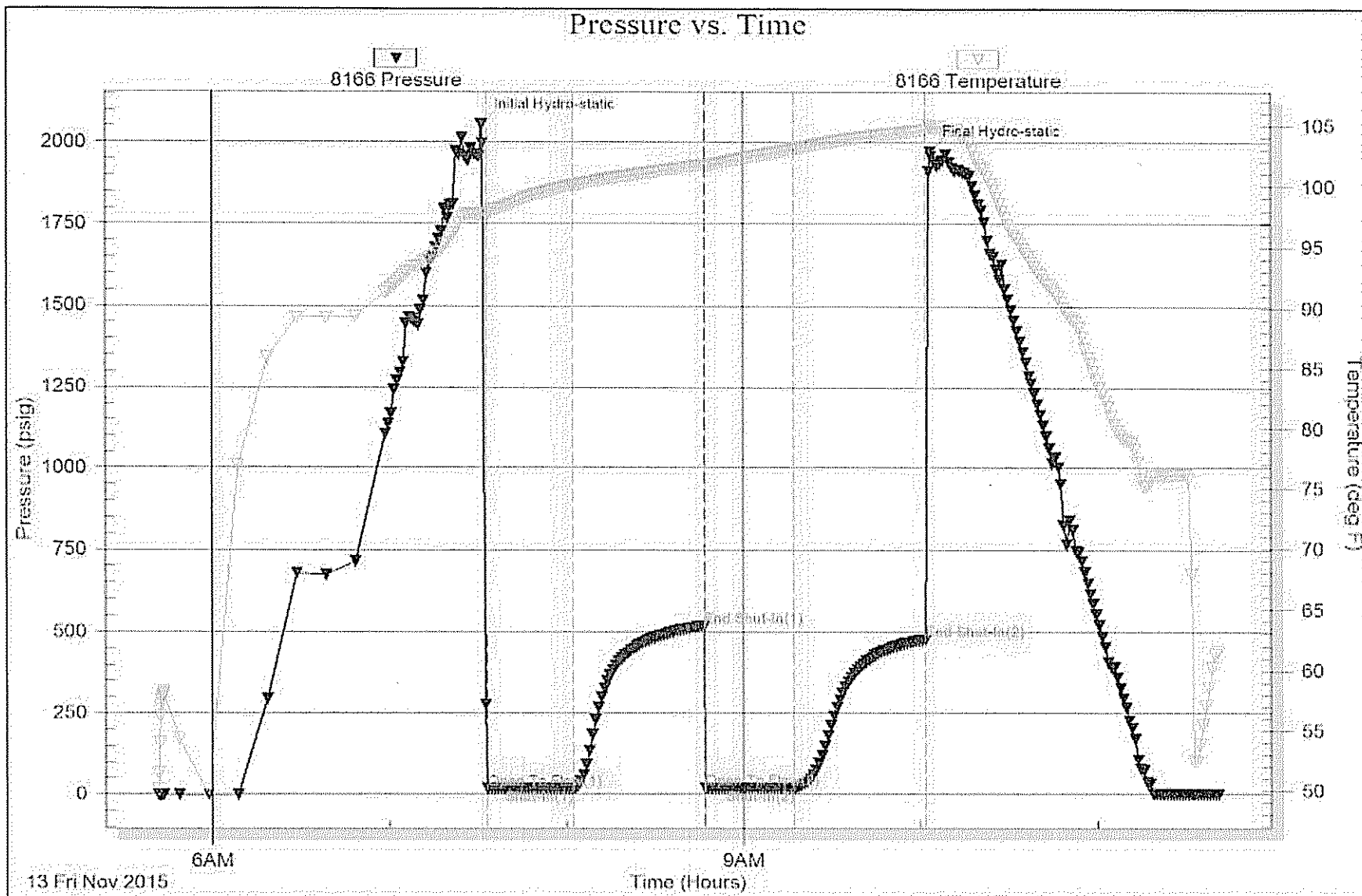
Num Gas Bombs: 0

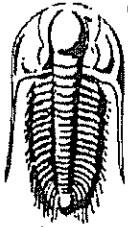
Serial #:

Laboratory Name:

Laboratory Location:

Recovery Comments:





**TRILOBITE
TESTING, INC.**

DRILL STEM TEST REPORT

Lario Oil & Gas Company
301 S. Market St
Wichita, Ks 67202
ATTN: Bob Bayer

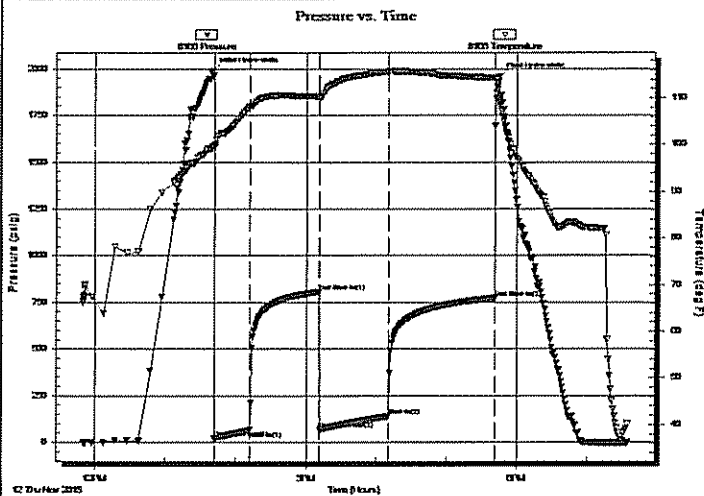
22-19s-33w Scott, Ks
Clawson 1-22
Job Ticket: 61787 DST#: 1
Test Start: 2015.11.12 @ 11:50:23

GENERAL INFORMATION:

Formation: LKC A
Deviated: No Whipstock: ft (KB)
Time Tool Opened: 13:41:53
Time Test Ended: 19:33:23
Test Type: Conventional Bottom Hole (Initial)
Tester: Brandon Turley
Unit No: 79
Interval: 3874.00 ft (KB) To 3920.00 ft (KB) (TVD)
Reference Elevations: 2973.00 ft (KB)
Total Depth: 3920.00 ft (KB) (TVD) 2963.00 ft (CF)
Hole Diameter: 8.75 inches Hole Condition: Good KB to GR/CF: 10.00 ft

Serial #: 8166 Outside
Press@RunDepth: 138.24 psig @ 3875.00 ft (KB) Capacity: 8000.00 psig
Start Date: 2015.11.12 End Date: 2015.11.12 Last Calib.: 2015.11.12
Start Time: 11:50:28 End Time: 19:33:22 Time On Btm: 2015.11.12 @ 13:39:53
Time Off Btm: 2015.11.12 @ 17:44:53

TEST COMMENT: IF: 1/4 blow BOB in 29 min.
IS: No return.
FF: Surface blow BOB in 40 min.
FS: No return.



PRESSURE SUMMARY

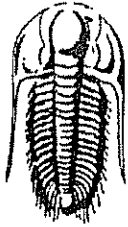
Time (Min.)	Pressure (psig)	Temp (deg F)	Annotation
0	1989.02	99.54	Initial Hydro-static
2	20.94	99.44	Open To Flow (1)
32	64.54	108.20	Shut-In(1)
91	806.07	110.36	End Shut-In(1)
92	67.66	110.08	Open To Flow (2)
151	138.24	115.72	Shut-In(2)
241	771.64	114.37	End Shut-In(2)
245	1956.53	109.65	Final Hydro-static

Recovery

Length (ft)	Description	Volume (bbl)
186.00	mcw 95%w 5%m	2.61
82.00	w cm oil spots 30%w 70%m	1.15
2.00	free oil 100%o	0.03

Gas Rates

	Choke (inches)	Pressure (psig)	Gas Rate (Mcf/d)



TRILOBITE
TESTING, INC

DRILL STEM TEST REPORT

FLUID SUMMARY

Lario Oil & Gas Company

22-19s-33w Scott, Ks

301 S. Market St
Wichita, Ks 67202

Clawson 1-22

Job Ticket: 61787

DST#: 1

ATTN: Bob Bayer

Test Start: 2015.11.12 @ 11:50:23

Mud and Cushion Information

Mud Type: Gel Chem

Cushion Type:

Oil API:

0 deg API

Mud Weight: 9.00 lb/gal

Cushion Length:

ft

Water Salinity:

48000 ppm

Viscosity: 57.00 sec/qt

Cushion Volume:

bbf

Water Loss: 7.20 in³

Gas Cushion Type:

Resistivity: 0.00 ohm.m

Gas Cushion Pressure:

psig

Salinity: 4000.00 ppm

Filter Cake: 1.00 inches

Recovery Information

Recovery Table

Length ft	Description	Volume bbf
186.00	mcw 95%w 5%m	2.609
82.00	w cm oil spots 30%w 70%m	1.150
2.00	free oil 100%o	0.028

Total Length: 270.00 ft

Total Volume: 3.787 bbf

Num Fluid Samples: 0

Num Gas Bombs: 0

Serial #:

Laboratory Name:

Laboratory Location:

Recovery Comments: .23@49=48000

