



**TRILOBITE
TESTING, INC**

DRILL STEM TEST REPORT

Vincent Oil Corporation

20-29S-24W Ford

155 N Market Ste 700
Wichita, KS 67202

Weddle 1-20

Job Ticket: 57910

DST#: 1

ATTN: Tom Dudgeon

Test Start: 2015.09.30 @ 02:30:01

GENERAL INFORMATION:

Formation: **Penn/Morrow**

Deviated: No Whipstock: ft (KB)

Time Tool Opened: 04:44:01

Time Test Ended: 09:36:16

Test Type: Conventional Bottom Hole (Initial)

Tester: Leal Cason

Unit No: 74

Interval: 5202.00 ft (KB) To 5240.00 ft (KB) (TVD)

Reference Elevations: 2571.00 ft (KB)

Total Depth: 5240.00 ft (KB) (TVD)

2557.00 ft (CF)

Hole Diameter: 7.88 inches Hole Condition: Good

KB to GR/CF: 14.00 ft

Serial #: 8525 Inside

Press@RunDepth: 26.66 psig @ 5203.00 ft (KB)

Capacity: 8000.00 psig

Start Date: 2015.09.30

End Date:

2015.09.30

Last Calib.:

2015.09.30

Start Time:

02:30:02

End Time:

09:36:16

Time On Btm:

2015.09.30 @ 04:32:16

Time Off Btm:

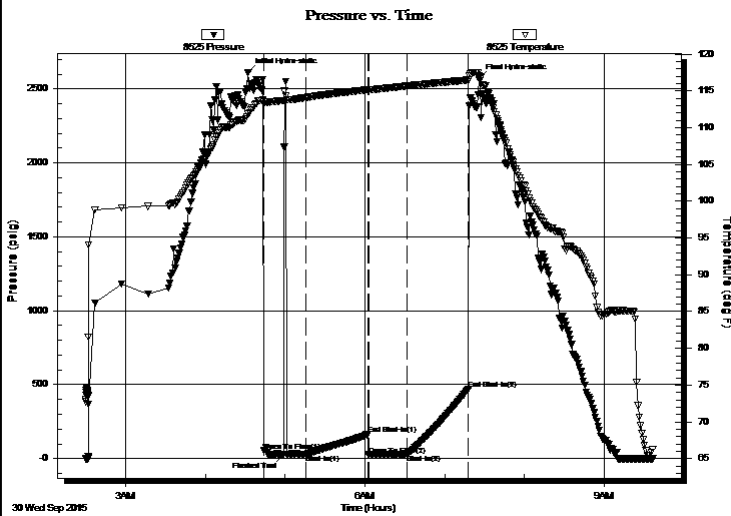
2015.09.30 @ 07:25:46

TEST COMMENT: IF: Weak 1 1/2 inch Blow, Dead @ 15 minutes, Flushed Tool, No Blow

IS: No Blow Back

FF: Weak 1 1/2 inch Blow

FS: No Blow Back



PRESSURE SUMMARY

Time (Min.)	Pressure (psig)	Temp (deg F)	Annotation
0	2611.54	111.84	Initial Hydro-static
12	51.95	113.19	Open To Flow (1)
27	28.41	113.70	Flushed Tool
44	27.99	114.10	Shut-In(1)
90	164.10	115.14	End Shut-In(1)
91	22.67	115.10	Open To Flow (2)
120	26.66	115.65	Shut-In(2)
166	470.25	116.47	End Shut-In(2)
174	2569.92	117.05	Final Hydro-static

Recovery

Length (ft)	Description	Volume (bbl)
5.00	Mud	0.02

Gas Rates

	Choke (inches)	Pressure (psig)	Gas Rate (Mcf/d)



**TRILOBITE
TESTING, INC**

DRILL STEM TEST REPORT

FLUID SUMMARY

Vincent Oil Corporation

20-29S-24W Ford

155 N Market Ste 700
Wichita, KS 67202

Weddle 1-20

Job Ticket: 57910

DST#: 1

ATTN: Tom Dudgeon

Test Start: 2015.09.30 @ 02:30:01

Mud and Cushion Information

Mud Type: Gel Chem

Cushion Type:

Oil API:

deg API

Mud Weight: 9.00 lb/gal

Cushion Length:

ft

Water Salinity:

ppm

Viscosity: 53.00 sec/qt

Cushion Volume:

bbbl

Water Loss: 9.59 in³

Gas Cushion Type:

Resistivity: ohm.m

Gas Cushion Pressure:

psig

Salinity: 4900.00 ppm

Filter Cake: 0.02 inches

Recovery Information

Recovery Table

Length ft	Description	Volume bbl
5.00	Mud	0.025

Total Length: 5.00 ft Total Volume: 0.025 bbl

Num Fluid Samples: 0

Num Gas Bombs: 0

Serial #:

Laboratory Name:

Laboratory Location:

Recovery Comments:

Serial #: 8525

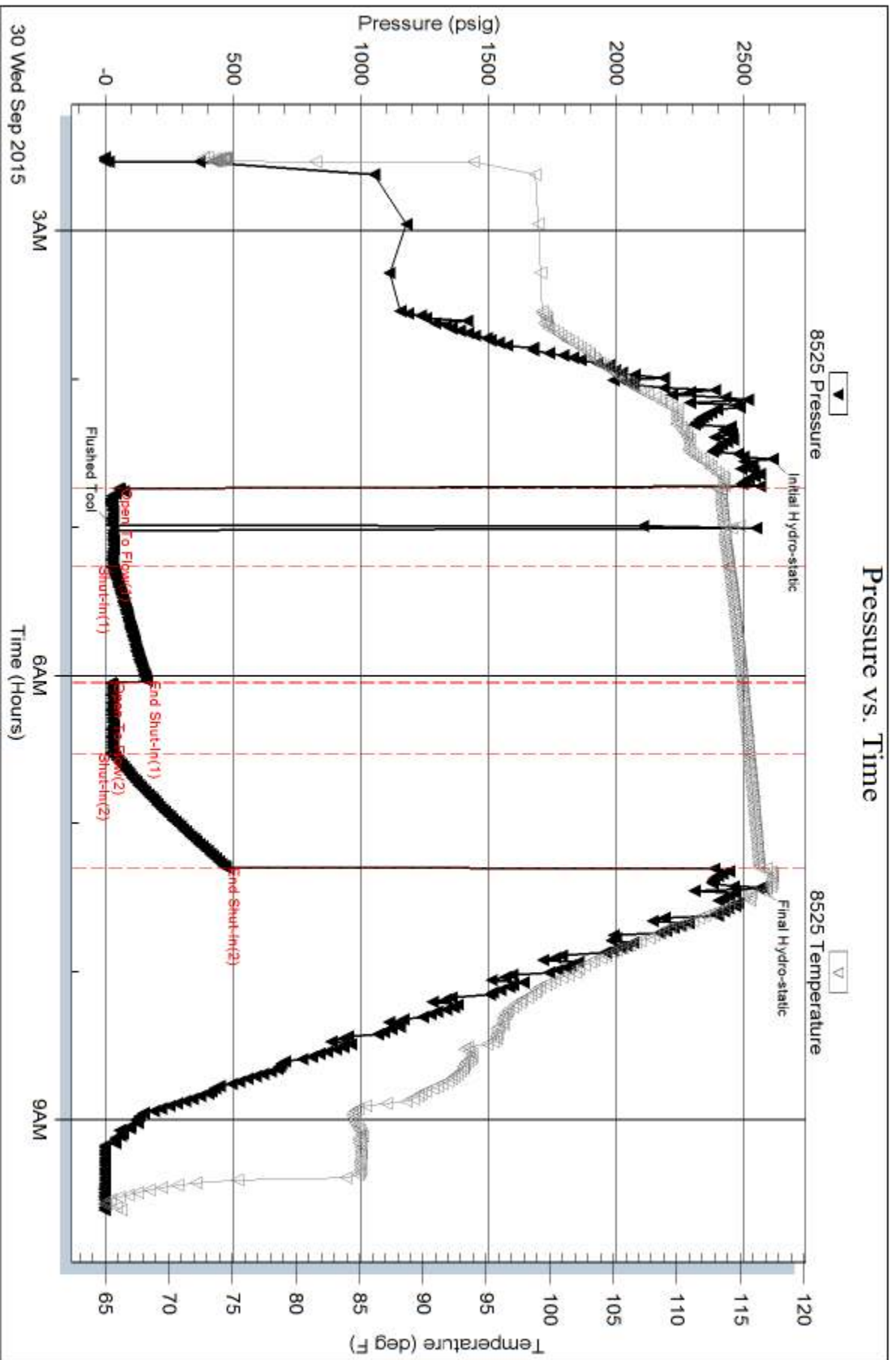
Inside

Vincent Oil Corporation

Weddle 1-20

DST Test Number: 1

Pressure vs. Time



Trilobite Testing, Inc

Ref. No: 57910

Printed: 2015.09.30 @ 10:06:59