



TRILOBITE TESTING, INC.

DRILL STEM TEST REPORT

Raymond Oil Co

24-14-33w Logan, Ks

p.o. box 48788
Wichita, Ks
67201-8788
ATTN: Max Lovely

Meyer #1

Job Ticket: 48271

DST#: 2

Test Start: 2015.12.15 @ 16:50:55

GENERAL INFORMATION:

Formation: **Myrick Station**

Deviated: No Whipstock: 0.00 ft (KB)

Time Tool Opened: 18:54:55

Time Test Ended: 00:35:10

Test Type: Conventional Bottom Hole (Reset)

Tester: Shane McBride

Unit No: 84

Interval: 4213.00 ft (KB) To 4240.00 ft (KB) (TVD)

Reference Elevations: 2722.00 ft (KB)

Total Depth: 4240.00 ft (KB) (TVD)

2717.00 ft (CF)

Hole Diameter: 7.88 inches Hole Condition: Fair

KB to GR/CF: 5.00 ft

Serial #: 9120 Outside

Press @ Run Depth: 45.12 psig @ 4214.00 ft (KB)

Capacity: 8000.00 psig

Start Date: 2015.12.15

End Date:

2015.12.16

Last Calib.:

2015.12.16

Start Time: 16:50:55

End Time:

00:20:10

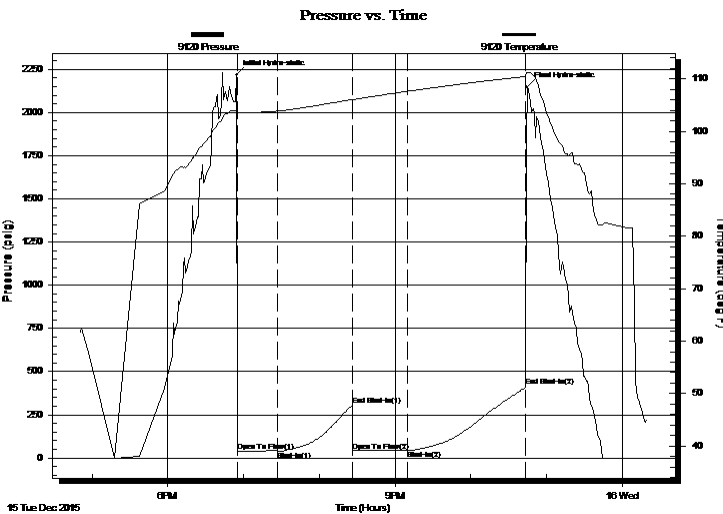
Time On Btm:

2015.12.15 @ 18:54:40

Time Off Btm:

2015.12.15 @ 22:44:55

TEST COMMENT: Surface blow died in 25 min.
No return
No blow for 8 min, very weak surface blow
No return



PRESSURE SUMMARY

Time (Min.)	Pressure (psig)	Temp (deg F)	Annotation
0	2217.75	103.86	Initial Hydro-static
1	37.77	102.69	Open To Flow (1)
33	41.60	103.87	Shut-In(1)
92	305.26	106.09	End Shut-In(1)
92	40.23	105.92	Open To Flow (2)
136	45.12	107.65	Shut-In(2)
229	412.97	110.46	End Shut-In(2)
231	2148.85	111.24	Final Hydro-static

Recovery

Length (ft)	Description	Volume (bbl)
60.00	mud 100%m	0.30

Gas Rates

Choke (inches)	Pressure (psig)	Gas Rate (Mcf/d)

* Recovery from multiple tests

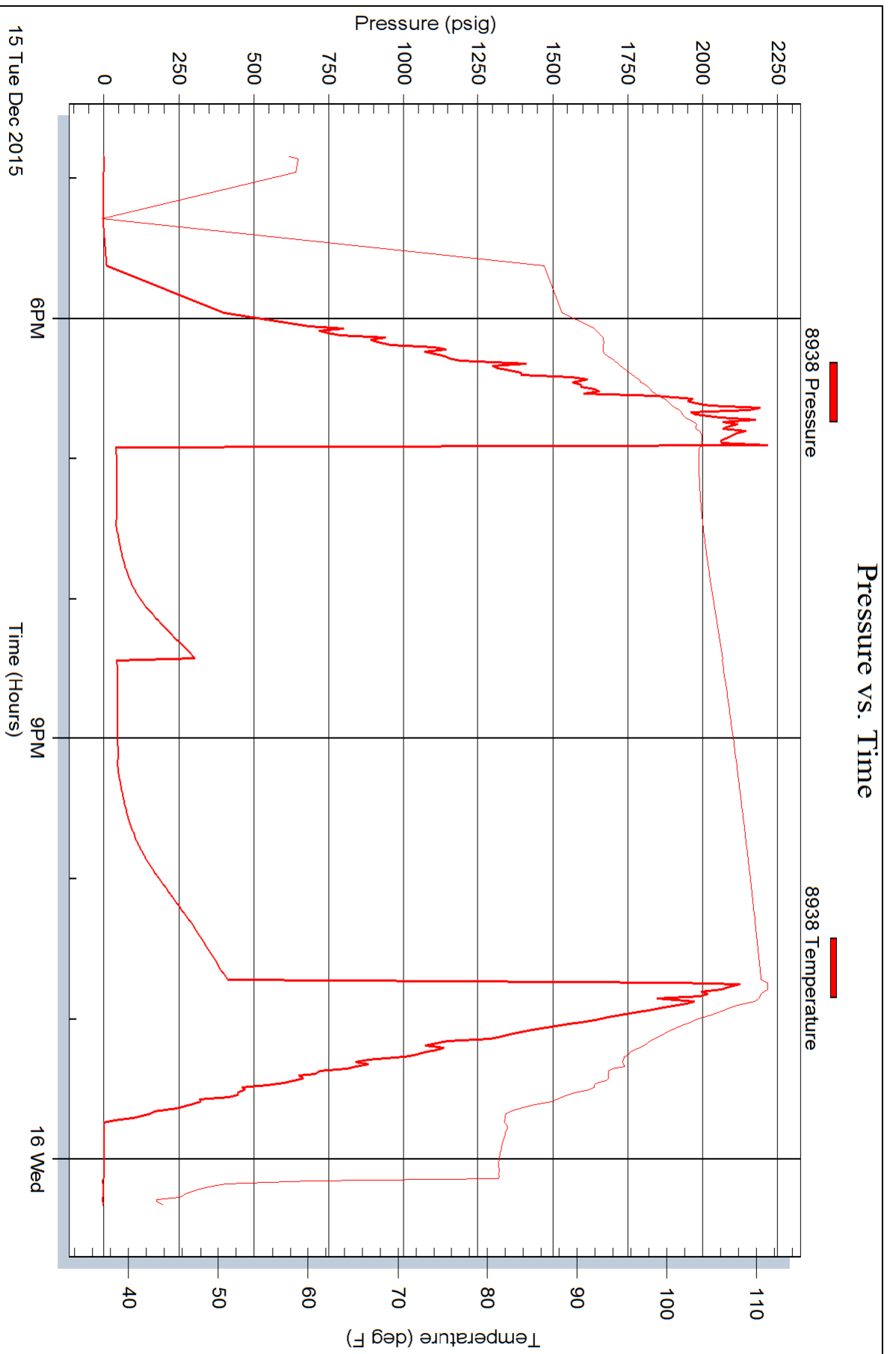
Serial #: 8938

Inside

Raymond Oil Co

Meyer #1

DST Test Number: 2



Trilobite Testing, Inc

Ref. No: 48271

Printed: 2015.12.16 @ 07:32:11