

DRILL STEM TEST REPORT

Prepared For: **Castle Resources Inc**

Box 87
Schoenchen KS 67667+0087

ATTN: Jerry Green

Wesseler #4

19-17s-9w Ellsworth,KS

Start Date: 2015.12.22 @ 01:20:00

End Date: 2015.12.22 @ 09:59:31

Job Ticket #: 62974 DST #: 1

Trilobite Testing, Inc
PO Box 362 Hays, KS 67601
ph: 785-625-4778 fax: 785-625-5620

Printed: 2015.12.23 @ 08:10:31

Castle Resources Inc
19-17s-9w Ellsworth,KS
Wesseler #4
DST # 1
Arbuckle
2015.12.22



TRILOBITE TESTING, INC

DRILL STEM TEST REPORT

Castle Resources Inc
 Box 87
 Schoenchen KS 67667+0087
 ATTN: Jerry Green

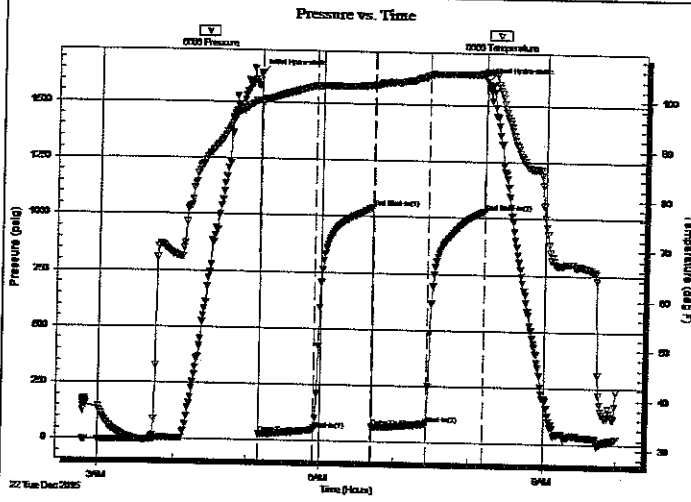
19-17s-9w Ellsworth, KS
 Wesseler #4
 Job Ticket: 62974 DST#: 1
 Test Start: 2015.12.22 @ 01:20:00

GENERAL INFORMATION:

Formation: **Arbuckle**
 Deviated: No Whipstock: ft (KB)
 Time Tool Opened: 02:48:00
 Time Test Ended: 09:59:31
 Interval: **3166.00 ft (KB) To 3221.00 ft (KB) (TVD)**
 Total Depth: 3221.00 ft (KB) (TVD)
 Hole Diameter: 7.88 inches Hole Condition: Fair
 Test Type: Conventional Bottom Hole (Initial)
 Tester: Jared Scheck
 Unit No: 55
 Reference Elevations: 1775.00 ft (KB)
 1771.00 ft (CF)
 KB to GR/CF: 4.00 ft

Serial #: 6666 Inside
 Press@RunDepth: 82.55 psig @ 3168.00 ft (KB) Capacity: 8000.00 psig
 Start Date: 2015.12.22 End Date: 2015.12.22 Last Calib.: 2015.12.22
 Start Time: 02:48:01 End Time: 09:59:31 Time On Btm: 2015.12.22 @ 05:09:01
 Time Off Btm: 2015.12.22 @ 08:12:16

TEST COMMENT: IFF-45 Minutes-Weak blow built bottom of bucket in 33 minutes
 ISIP-45 Minutes-Very weak surface blow
 FFF-45 Minutes-Weak blow built bottom of bucket in 33 minutes
 FSIP-45 Minutes-No blow back



PRESSURE SUMMARY

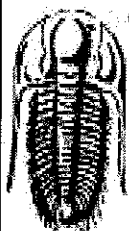
Time (Min.)	Pressure (psig)	Temp (deg F)	Annotation
0	1630.83	99.44	Initial Hydro-static
1	25.31	99.06	Open To Flow (1)
46	47.70	102.46	Shut-In(1)
93	1042.65	102.75	End Shut-In(1)
93	66.75	102.72	Open To Flow (2)
137	82.55	104.94	Shut-In(2)
183	1029.53	105.37	End Shut-In(2)
184	1608.30	105.76	Final Hydro-static

Recovery

Length (ft)	Description	Volume (bbl)
120.00	GOM 30%gas 35%oil 35%mud	1.68
30.00	MOG 10%mud 40%oil 50%gas	0.42
20.00	MO 40%mud 60%oil	0.28

Gas Rates

Choke (inches)	Pressure (psig)	Gas Rate (Mcf/d)



**TRILOBITE
TESTING, INC.**

DRILL STEM TEST REPORT

Castle Resources Inc

19-17s-9w Ellsworth, KS

Box 87
Schoenchen KS 67667+0087

Wesseler #4

Job Ticket: 62974

DST#: 1

ATTN: Jerry Green

Test Start: 2015.12.22 @ 01:20:00

GENERAL INFORMATION:

Formation: **Arbuckle**

Deviated: No Whipstock: ft (KB)

Time Tool Opened: 02:48:00

Time Test Ended: 09:59:31

Test Type: Conventional Bottom Hole (Initial)

Tester: Jared Scheck

Unit No: 55

Interval: **3166.00 ft (KB) To 3221.00 ft (KB) (TVD)**

Total Depth: 3221.00 ft (KB) (TVD)

Hole Diameter: 7.88 inches Hole Condition: Fair

Reference Elevations: 1775.00 ft (KB)

1771.00 ft (CF)

KB to GR/CF: 4.00 ft

Serial #: 6731 Outside

Press@RunDepth: psig @ 3169.00 ft (KB)

Start Date: 2015.12.22 End Date: 2015.12.22

Start Time: 02:48:01 End Time: 09:59:31

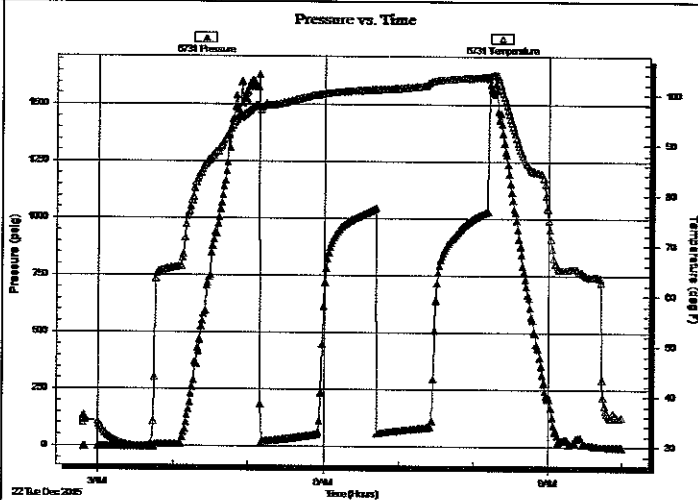
Capacity: 8000.00 psig

Last Calib.: 2015.12.22

Time On Btm:

Time Off Btm:

TEST COMMENT: IFF-45 Minutes-Weak blow built bottom of bucket in 33 minutes
ISIP-45 Minutes-Very weak surface blow
FFP-45 Minutes-Weak blow built bottom of bucket in 33 minutes
FSIP-45 Minutes-No blow back



PRESSURE SUMMARY

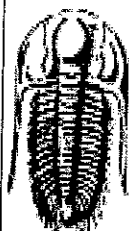
Time (Min.)	Pressure (psig)	Temp (deg F)	Annotation

Recovery

Length (ft)	Description	Volume (bbl)
120.00	GOM 30%gas 35%oil 35%mud	1.68
30.00	MOG 10%mud 40%oil 50%gas	0.42
20.00	MO 40%mud 60%oil	0.28

Gas Rates

	Choke (inches)	Pressure (psig)	Gas Rate (Mcf/d)



**TRILOBITE
TESTING, INC.**

DRILL STEM TEST REPORT

TOOL DIAGRAM

Castle Resources Inc
Box 87
Schoenchen KS 67667+0087
ATTN: Jerry Green

19-17s-9w Ellsworth, KS
Wesseler #4
Job Ticket: 62974 DST#: 1
Test Start: 2015.12.22 @ 01:20:00

Tool Information

Drill Pipe:	Length: 3177.00 ft	Diameter: 3.80 inches	Volume: 44.56 bbl	Tool Weight: 1000.00 lb
Heavy Wt. Pipe:	Length: 0.00 ft	Diameter: 0.00 inches	Volume: 0.00 bbl	Weight set on Packer: 20000.00 lb
Drill Collar:	Length: 0.00 ft	Diameter: 0.00 inches	Volume: 0.00 bbl	Weight to Pull Loose: 57000.00 lb
			Total Volume: 44.56 bbl	Tool Chased 0.00 ft
Drill Pipe Above KB:	31.00 ft			String Weight: Initial 49000.00 lb
Depth to Top Packer:	3166.00 ft			Final 50000.00 lb
Depth to Bottom Packer:	ft			
Interval between Packers:	55.00 ft			
Tool Length:	75.00 ft			
Number of Packers:	2	Diameter: 6.75 inches		

Tool Comments:

Tool Description

Tool Description	Length (ft)	Serial No.	Position	Depth (ft)	Accum. Lengths
Shut In Tool	5.00			3151.00	
Hydraulic tool	5.00			3156.00	
Packer	5.00			3161.00	20.00 Bottom Of Top Packer
Packer	5.00			3166.00	
Perforations	1.00			3167.00	
Recorder	1.00	6666	Inside	3168.00	
Recorder	1.00	6731	Outside	3169.00	
Perforations	16.00			3185.00	
Change Over Sub	0.75			3185.75	
Drill Pipe	31.50			3217.25	
Change Over Sub	0.75			3218.00	
Bullnose	3.00			3221.00	55.00 Bottom Packers & Anchor

Total Tool Length: 75.00



**TRILOBITE
TESTING, INC**

DRILL STEM TEST REPORT

FLUID SUMMARY

Castle Resources Inc
Box 87
Schoenchen KS 67667+0087
ATTN: Jerry Green

19-17s-9w Ellsworth,KS
Wesseler #4
Job Ticket: 62974 **DST#: 1**
Test Start: 2015.12.22 @ 01:20:00

Mud and Cushion Information

Mud Type: Gel Chem	Cushion Type:	Oil API:	deg API
Mud Weight: 9.00 lb/gal	Cushion Length: ft	Water Salinity:	ppm
Viscosity: 48.00 sec/qt	Cushion Volume: bbl		
Water Loss: 7.19 in ³	Gas Cushion Type:		
Resistivity: ohm.m	Gas Cushion Pressure: psig		
Salinity: 4000.00 ppm			
Filter Cake: 1.00 inches			

Recovery Information

Recovery Table

Length ft	Description	Volume bbl
120.00	GOM 30%gas 35%oil 35%mud	1.683
30.00	MOG 10%mud 40%oil 50%gas	0.421
20.00	MO 40%mud 60%oil	0.281

Total Length: 170.00 ft Total Volume: 2.385 bbl
Num Fluid Samples: 0 Num Gas Bombs: 0 Serial #:
Laboratory Name: Laboratory Location:
Recovery Comments:

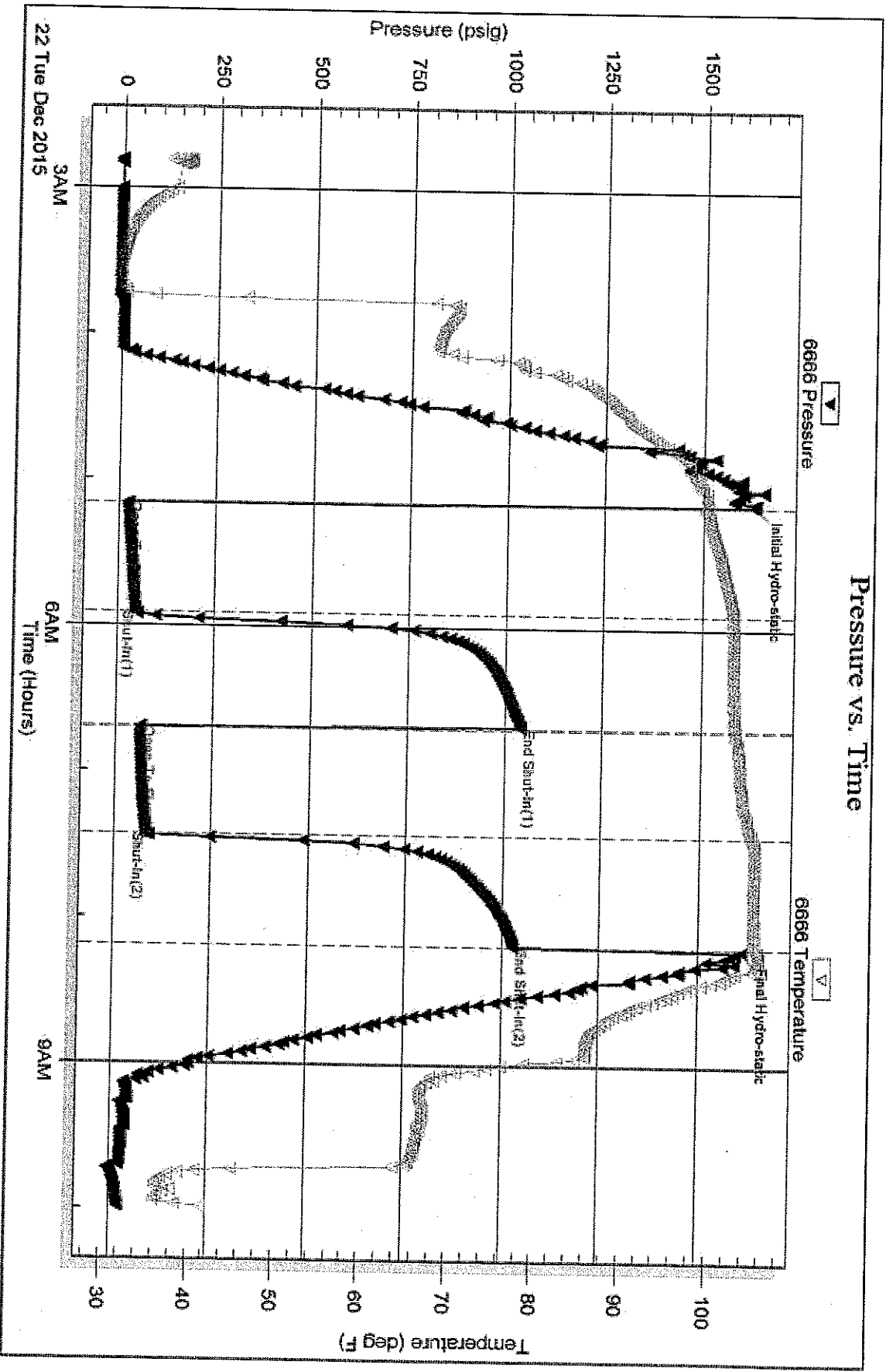
Serial #: 6666

Inside

Castle Resources Inc.

Messeler #4

DST Test Number: 1



Tribble Testing, Inc

Ref. No: 62974

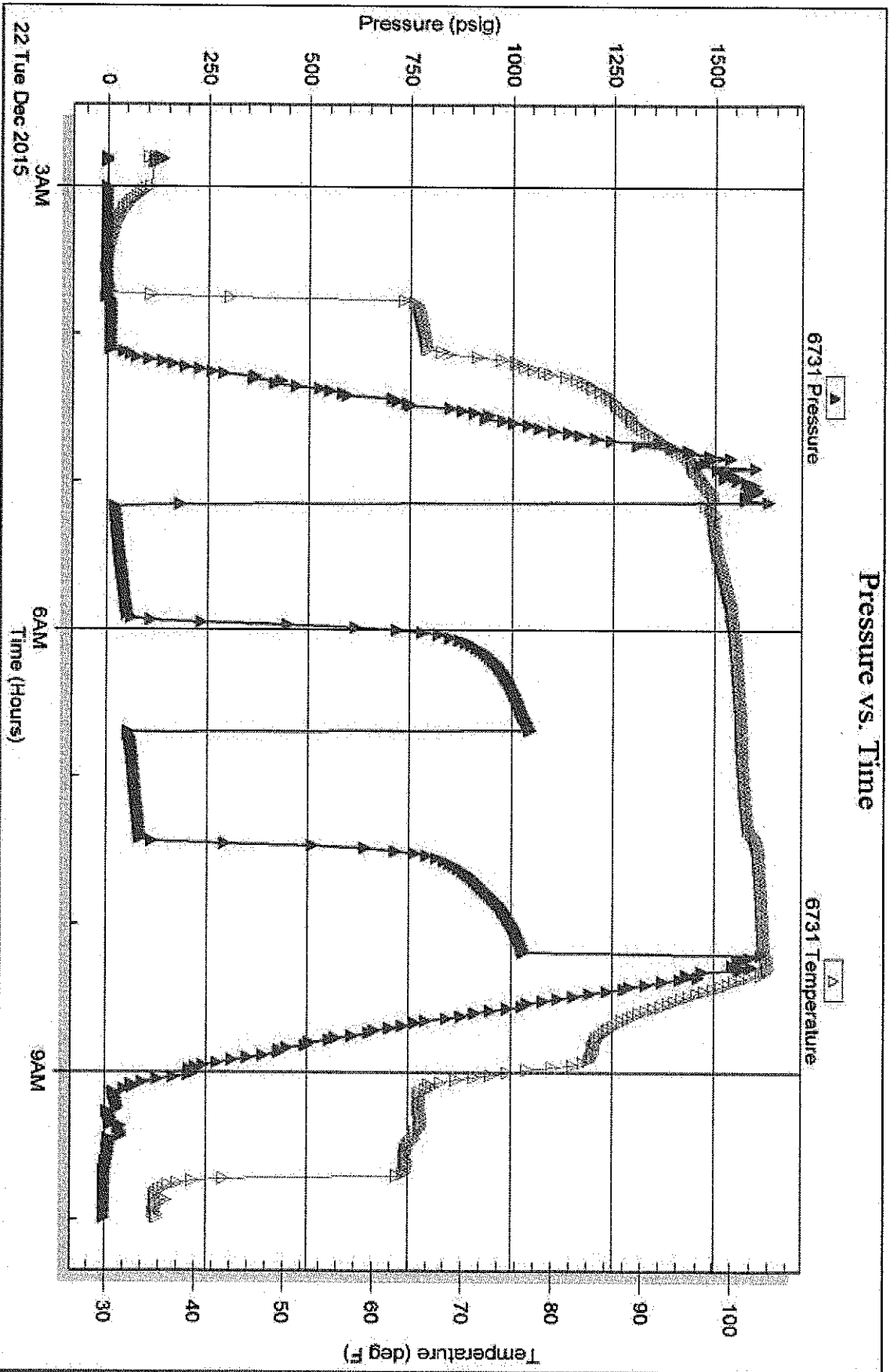
Printed: 2015, 12, 23 @ 08:10:33

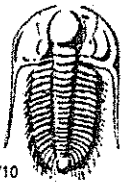
Serial #: 6731

Outside Castle Resources Inc

Vessel #4

DST Test Number: 1





TRILOBITE TESTING INC.

1515 Commerce Parkway • Hays, Kansas 67601

Test Ticket

NO. 82974

Well Name & No. Wessler #4 Test No. 1 Date 12-22-2015
 Company Castle Resources Inc Elevation 1775 KB 1771 GL
 Address Box 87 Schoonchen KS 67767 +D087
 Co. Rep / Geo. Jerry Green Rig White Knight
 Location: Sec. 19 Twp. 17s Rge. 9w Co. Ellsworth State KS

Interval Tested 3166-3221 Zone Tested Arbuckle
 Anchor Length 55 Drill Pipe Run _____ Mud Wt. 9.1
 Top Packer Depth 3161 Drill Collars Run _____ Vis 48
 Bottom Packer Depth 3160 Wt. Pipe Run _____ WL 7.2
 Total Depth 3221 Chlorides 4,000 ppm System LCM 1

Blow Description IFP - Weak Blow Built Bottom of Bucket in 33 minutes
ISIP - Very Weak Surface Blow
FFP - Weak Blow Built Bottom of Bucket in 33 minutes
FSIP - NO Blow Back

Rec	Feet of	%gas	%oil	%water	%mud
120	60M	30	35	35	
30	M O B	50	40	10	
20	M O		60	40	
		%gas	%oil	%water	%mud
		%gas	%oil	%water	%mud

Rec Total _____ BHT _____ Gravity _____ API RW _____ @ _____ °F Chlorides _____ ppm
 (A) Initial Hydrostatic 11030 Test 1050 T-On Location 1:20AM
 (B) First Initial Flow 25 Jars _____ T-Started 2:48AM
 (C) First Final Flow 47 Safety Joint _____ T-Open 4:59AM
 (D) Initial Shut-In 1042 Circ Sub _____ T-Pulled 7:59AM
 (E) Second Initial Flow 66 Hourly Standby _____ T-Out 9:59AM
 (F) Second Final Flow 82 Mileage 85 miles Round Trip Comments _____
 (G) Final Shut-In 1029 Sampler _____
 (H) Final Hydrostatic 1608 Straddle _____

Initial Open 45 Ruined Shale Packer _____
 Initial Shut-In 45 Ruined Packer _____
 Final Flow 45 Extra Packer _____
 Final Shut-In 45 Extra Recorder _____
 Sub Total 0
 Total 1135
 MP/DST Disc't _____
 Sub Total 1135

Approved By _____ Our Representative [Signature]
 Trilobite Testing Inc. shall not be liable for damaged of any kind of the property or personnel of the one for whom a test is made, or for any loss suffered or sustained, directly or indirectly, through the use of its equipment, or its statements or opinion concerning the results of any test, tools lost or damaged in the hole shall be paid for at cost by the party for whom the test is made.