



## DRILL STEM TEST REPORT

Prepared For: **Charles N Griffin**

PO Box 347  
Pratt, KS 67124

ATTN: Bruce Reed

**Rice #1**

**16-23S-12W Stafford,KS**

Start Date: 2016.02.05 @ 17:10:30

End Date: 2016.02.05 @ 22:36:15

Job Ticket #: 57978                      DST #: 1

Trilobite Testing, Inc  
PO Box 362 Hays, KS 67601  
ph: 785-625-4778 fax: 785-625-5620

Printed: 2016.02.08 @ 08:16:17

Charles N Griffin      16-23S-12W Stafford,KS      Rice #1      DST # 1      LKC H - J      2016.02.05



**TRILOBITE  
TESTING, INC**

# DRILL STEM TEST REPORT

Charles N Griffin

16-23S-12W Stafford, KS

PO Box 347  
Pratt, KS 67124

Rice #1

Job Ticket: 57978

DST#: 1

ATTN: Bruce Reed

Test Start: 2016.02.05 @ 17:10:30

## GENERAL INFORMATION:

Formation: **LKC H - J**

Deviated: No Whipstock: ft (KB)

Time Tool Opened: 18:56:45

Time Test Ended: 22:36:15

Test Type: Conventional Bottom Hole (Initial)

Tester: Leal Cason

Unit No: 74

Interval: **3514.00 ft (KB) To 3580.00 ft (KB) (TVD)**

Total Depth: 3580.00 ft (KB) (TVD)

Hole Diameter: 7.88 inches Hole Condition: Good

Reference Elevations: 1871.00 ft (KB)

1866.00 ft (CF)

KB to GR/CF: 5.00 ft

## Serial #: 8525

Inside

Press@RunDepth: 50.86 psig @ 3515.00 ft (KB)

Start Date: 2016.02.05

End Date:

2016.02.05

Capacity: 8000.00 psig

Last Calib.: 2016.02.05

Start Time: 17:10:31

End Time:

22:36:15

Time On Btm: 2016.02.05 @ 18:50:15

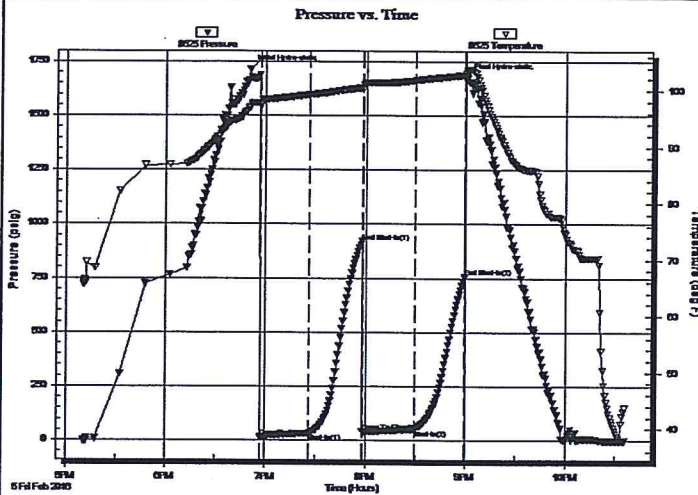
Time Off Btm: 2016.02.05 @ 21:00:30

TEST COMMENT: IF: Weak Blow, Built to 2 1/4"

ISI: No Blow Back

FF: Weak 1" Blow

FSI: No Blow Back



## PRESSURE SUMMARY

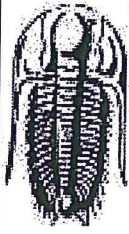
Time (Min.)	Pressure (psig)	Temp (deg F)	Annotation
0	1714.50	97.07	Initial Hydro-static
7	14.49	97.13	Open To Flow (1)
36	33.01	99.26	Shut-In(1)
68	919.19	100.52	End Shut-In(1)
68	39.83	100.20	Open To Flow (2)
99	50.86	101.81	Shut-In(2)
130	756.83	102.77	End Shut-In(2)
131	1679.59	103.53	Final Hydro-static

## Recovery

Length (ft)	Description	Volume (bbl)
65.00	VSOSM -1%O +99%M	0.32

## Gas Rates

Choke (inches)	Pressure (psig)	Gas Rate (Mc/d)



**TRILOBITE TESTING, INC.**

**DRILL STEM TEST REPORT**

Charles N Griffin

16-23S-12W Stafford,KS

PO Box 347  
Pratt, KS 67124

Rice #1

Job Ticket: 57978

DST#: 1

ATTN: Bruce Reed

Test Start: 2016.02.05 @ 17:10:30

**GENERAL INFORMATION:**

Formation: LKC H - J

Deviated: No Whipstock: ft (KB)

Time Tool Opened: 18:56:45

Time Test Ended: 22:36:15

Test Type: Conventional Bottom Hole (Initial)

Tester: Leal Cason

Unit No: 74

Interval: 3514.00 ft (KB) To 3580.00 ft (KB) (TVD)

Total Depth: 3580.00 ft (KB) (TVD)

Hole Diameter: 7.88 inches Hole Condition: Good

Reference Elevations: 1871.00 ft (KB)

1866.00 ft (CF)

KB to GR/CF: 5.00 ft

Serial #: 6806 Outside

Press@RunDepth: psig @ 3515.00 ft (KB)

Start Date: 2016.02.05 End Date: 2016.02.05

Start Time: 17:10:31 End Time: 22:37:30

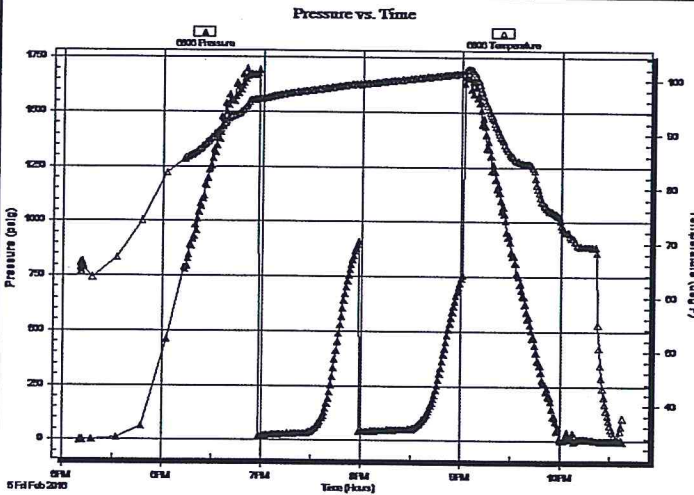
Capacity: 8000.00 psig

Last Calib.: 2016.02.05

Time On Btm:

Time Off Btm:

TEST COMMENT: IF: Weak Blow , Built to 2 1/4"  
ISI: No Blow Back  
FF: Weak 1" Blow  
FSI: No Blow Back



**PRESSURE SUMMARY**

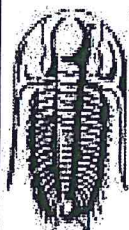
Time (Min.)	Pressure (psig)	Temp (deg F)	Annotation

**Recovery**

Length (ft)	Description	Volume (bbl)
65.00	VSOSM -1%O +99%M	0.32

**Gas Rates**

Choke (inches)	Pressure (psig)	Gas Rate (Mcf/d)



**TRILOBITE  
TESTING, INC.**

# DRILL STEM TEST REPORT

**TOOL DIAGRAM**

Charles N Griffin

**16-23S-12W Stafford,KS**

PO Box 347  
Pratt, KS 67124

**Rice #1**

Job Ticket: 57978

**DST#: 1**

ATTN: Bruce Reed

Test Start: 2016.02.05 @ 17:10:30

## Tool Information

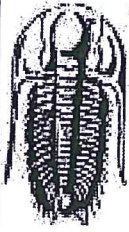
Drill Pipe:	Length: 3393.00 ft	Diameter: 3.80 inches	Volume: 47.59 bbl	Tool Weight: 2100.00 lb
Heavy Wt. Pipe:	Length: 0.00 ft	Diameter: 0.00 inches	Volume: 0.00 bbl	Weight set on Packer: 25000.00 lb
Drill Collar:	Length: 120.00 ft	Diameter: 2.25 inches	Volume: 0.59 bbl	Weight to Pull Loose: 75000.00 lb
			<u>Total Volume: 48.18 bbl</u>	Tool Chased ft
Drill Pipe Above KB:	18.00 ft			String Weight: Initial 58000.00 lb
Depth to Top Packer:	3514.00 ft			Final 58000.00 lb
Depth to Bottom Packer:	ft			
Interval between Packers:	66.00 ft			
Tool Length:	85.00 ft			
Number of Packers:	2	Diameter: 6.75 inches		

Tool Comments:

## Tool Description

Tool Description	Length (ft)	Serial No.	Position	Depth (ft)	Accum. Lengths
Shut In Tool	5.00			3500.00	
Hydraulic tool	5.00			3505.00	
Packer	5.00			3510.00	19.00 Bottom Of Top Packer
Packer	4.00			3514.00	
Stubb	1.00			3515.00	
Recorder	0.00	8525	Inside	3515.00	
Recorder	0.00	6806	Outside	3515.00	
Perforations	30.00			3545.00	
Change Over Sub	1.00			3546.00	
Drill Pipe	30.00			3576.00	
Change Over Sub	1.00			3577.00	
Bullnose	3.00			3580.00	66.00 Bottom Packers & Anchor

**Total Tool Length: 85.00**



**TRILOBITE  
TESTING, INC**

# DRILL STEM TEST REPORT

## FLUID SUMMARY

Charles N Griffin

16-23S-12W Stafford,KS

PO Box 347  
Pratt, KS 67124

Rice #1

Job Ticket: 57978

DST#: 1

ATTN: Bruce Reed

Test Start: 2016.02.05 @ 17:10:30

### Mud and Cushion Information

Mud Type: Gel Chem

Cushion Type:

Oil API:

deg API

Mud Weight: 9.00 lb/gal

Cushion Length:

ft

Water Salinity:

ppm

Viscosity: 51.00 sec/qt

Cushion Volume:

bbbl

Water Loss: 7.99 in<sup>3</sup>

Gas Cushion Type:

Resistivity: ohm.m

Gas Cushion Pressure:

psig

Salinity: 6100.00 ppm

Filter Cake: 0.02 inches

### Recovery Information

Recovery Table

Length ft	Description	Volume bbl
65.00	VSOSM-1%O +99%M	0.320

Total Length: 65.00 ft      Total Volume: 0.320 bbl

Num Fluid Samples: 0

Num Gas Bombs: 0

Serial #:

Laboratory Name:

Laboratory Location:

Recovery Comments:

Serial #: 8525

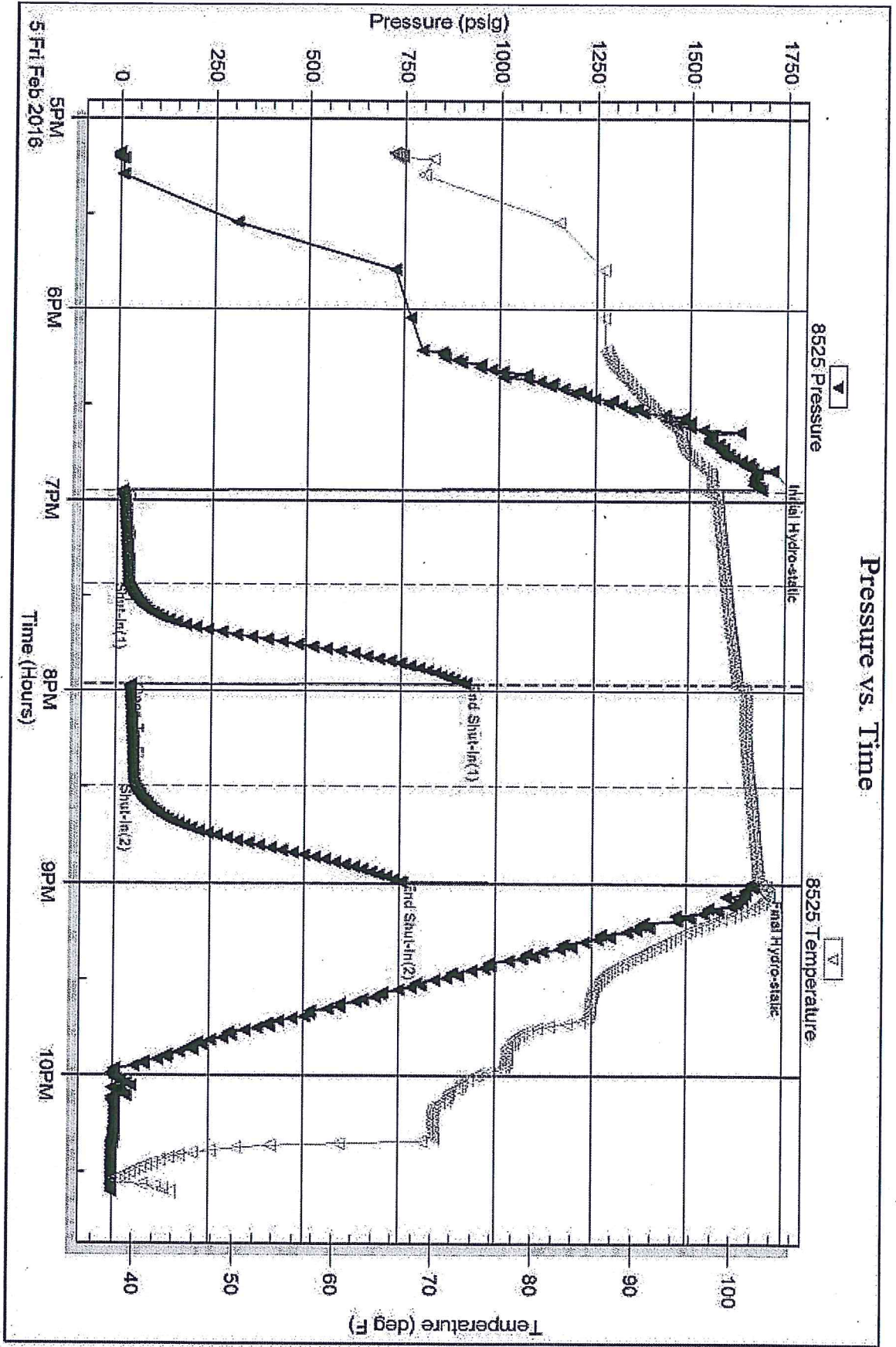
Inside

Charles N Griffin

Rice #1

DST Test Number: 1

### Pressure vs. Time



Tribble Testing, Inc

Ref No: 57978

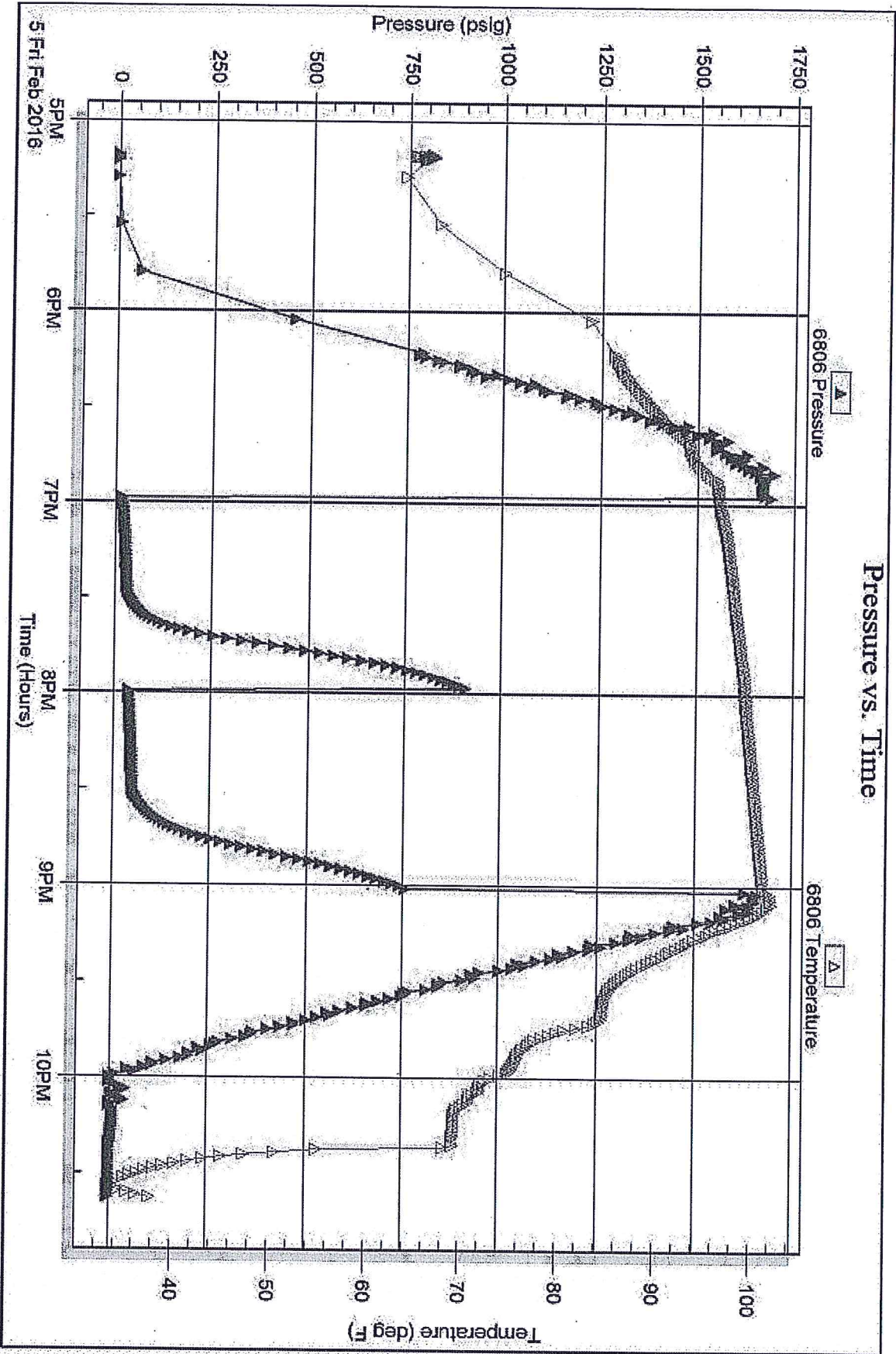
Printed: 2016.02.08 @ 08:16:18

Serial #: 6806

Outside Charles N Griffin

Rice #1

DST Test Number: 1



Tribble Testing, Inc

Ref. No: 57978

Printed: 2016.02.08 @ 08:16:19



# TRILOBITE TESTING INC.

1515 Commerce Parkway • Hays, Kansas 67601

## Test Ticket

NO. 57978

Well Name & No. Rice 1 Test No. 1 Date 02/05/16  
 Company Charles N. Griffin Elevation 1871 KB 1866 GL  
 Address PO Box 347 Pratt, KS 67124  
 Co. Rep / Geo. Bruce Reed Rig WW 4  
 Location: Sec. 16 Twp. 235 Rge. 12W Co. Stafford State KS

Interval Tested 3514 - 3580 Zone Tested L/KC H, I, + J  
 Anchor Length 66 Drill Pipe Run 3393 Mud Wt. 8.8  
 Top Packer Depth 3509 Drill Collars Run 120 Vis 51  
 Bottom Packer Depth 3514 Wt. Pipe Run 0 WL 8.0  
 Total Depth 3580 Chlorides 6100 ppm System LCM 1

Blow Description IF: weak blow Built to 2 1/4 inches  
ISI: NO BLOW BACK  
FF: weak 1 inch blow  
FSL: NO BLOW BACK

Rec	Feet of	%gas	%oil	%water	%mud
<u>65</u>	<u>VS 05 M</u>		<u>-1</u>		<u>+99</u>
Rec	Feet of	%gas	%oil	%water	%mud
Rec	Feet of	%gas	%oil	%water	%mud
Rec	Feet of	%gas	%oil	%water	%mud

Rec Total 65 BHT 103 Gravity N/C API RW N/C @ N/C °F Chlorides N/C ppm

(A) Initial Hydrostatic 1714  Test 1050 T-On Location 16:15  
 (B) First Initial Flow 14  Jars                      T-Started 17:10  
 (C) First Final Flow 33  Safety Joint                      T-Open 18:56  
 (D) Initial Shut-In 919  Circ Sub                      T-Pulled 20:59  
 (E) Second Initial Flow 40  Hourly Standby                      T-Out 22:36  
 (F) Second Final Flow 51  Mileage (60) Comments                       
 (G) Final Shut-In 757  Sampler                       
 (H) Final Hydrostatic 1680  Straddle                       Ruined Shale Packer                       
 Shale Packer                       Ruined Packer                       
 Extra Packer                       Extra Copies                       
 Extra Recorder                      Sub Total 0  
 Day Standby                      Total 1110  
 Accessibility                      MP/DST Disc't                       
 Sub Total 1110

Approved By Bruce Reed Our Representative [Signature]  
 Trilobite Testing Inc. shall not be liable for damaged or destroyed property or personnel of the one for whom a test is made, or for any loss suffered or sustained, directly or indirectly, through the use of its equipment, or its statements or opinion concerning the results of any test, tools lost or damaged in the hole shall be paid for at cost by the party for whom the test is made.