

**TRILOBITE
TESTING, INC.**

DRILL STEM TEST REPORT

Schaben Oil
2704 Ash Hays
KS 67601
ATTN: Andrew Stenzel

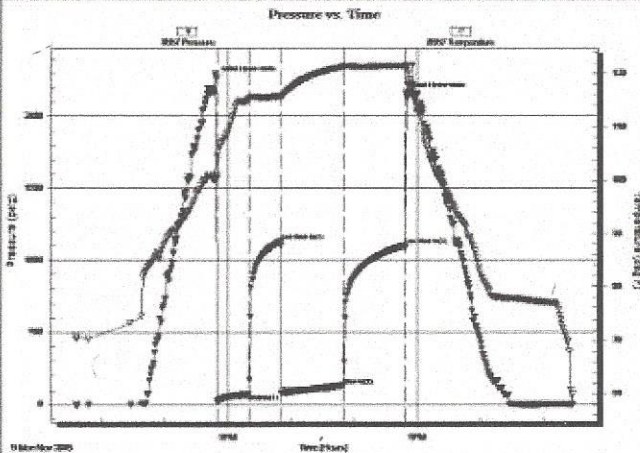
31-19-21, Ness, KS
Lyle Schaben #3-31
Job Ticket: 64868 DST#: 2
Test Start: 2015.11.09 @ 15:35:00

GENERAL INFORMATION:

Formation: Miss.
Deviated: No Whipstock: ft (KB)
Time Tool Opened: 17:49:00
Time Test Ended: 23:26:45
Interval: 4388.00 ft (KB) To 4395.00 ft (KB) (TVD)
Total Depth: 4395.00 ft (KB) (TVD)
Hole Diameter: 7.88 inches Hole Condition: Fair
Test Type: Conventional Bottom Hole (Reset)
Tester: Brett Dickinson
Unit No: 81
Reference Elevations: 2256.00 ft (KB)
2251.00 ft (CF)
KB to GR/CF: 5.00 ft

Serial #: 8957 Outside
Press@RunDepth: 132.79 psig @ 4392.00 ft (KB)
Start Date: 2015.11.09 End Date: 2015.11.09
Start Time: 15:35:05 End Time: 23:26:44
Capacity: 8000.00 psig
Last Calib.: 2015.11.09
Time On Btm: 2015.11.09 @ 17:48:30
Time Off Btm: 2015.11.09 @ 20:49:00

TEST COMMENT: IF-BOB in 21min
IS-Surface blow died in 23min
FF-BOB in 39min
FSI-Surface blow



PRESSURE SUMMARY

Time (Min.)	Pressure (psig)	Temp (deg F)	Annotation
0	2261.81	100.71	Initial Hydro-static
1	22.19	100.52	Open To Flow (1)
31	75.49	115.17	Shut-In (1)
61	1130.46	115.73	End Shut-In (1)
62	80.63	115.58	Open To Flow (2)
121	132.79	121.25	Shut-In (2)
179	1101.79	121.39	End Shut-In (2)
181	2147.74	121.49	Final Hydro-static

Recovery

Length (ft)	Description	Volume (bbl)
60.00	VSWMCO 10%G 55%O 5%W 30%M	0.30
60.00	VSWMCO 10%G 50%O 10%W 30%M	0.30
210.00	GO 10%G 90%O	2.95
0.00	240ft GIP	0.00

* Recovery from multiple tests

Gas Rates

	Choke (inches)	Pressure (psig)	Gas Rate (Mcfd)