

TRILOBITE TESTING, INC

DRILL STEM TEST REPORT

Staab Oil Co

32-12s-17w Ellis

1607 Hopewell Rd
Hays Ks 67601-9443

Rome Wilfric #1

Job Ticket: 64905

DST#: 1

ATTN: Frank & Janel Staab

Test Start: 2015.11.23 @ 11:50:38

GENERAL INFORMATION:

Formation: **LKC A-C**

Deviated: No Whipstock: ft (KB)

Time Tool Opened: 13:31:33

Time Test Ended: 16:06:03

Test Type: Conventional Bottom Hole (Initial)

Tester: Ray Schwager

Unit No: 70

Interval: **3312.00 ft (KB) To 3366.00 ft (KB) (TVD)**

Reference Elevations: 2054.00 ft (KB)

Total Depth: 3366.00 ft (KB) (TVD)

2049.00 ft (CF)

Hole Diameter: 7.85 inches Hole Condition: Fair

KB to GR/CF: 5.00 ft

Serial #: 8018

Inside

Press@RunDepth: 17.26 psig @ 3314.00 ft (KB)

Capacity: 8000.00 psig

Start Date: 2015.11.23

End Date:

2015.11.23

Last Calib.: 2015.11.23

Start Time: 11:50:38

End Time:

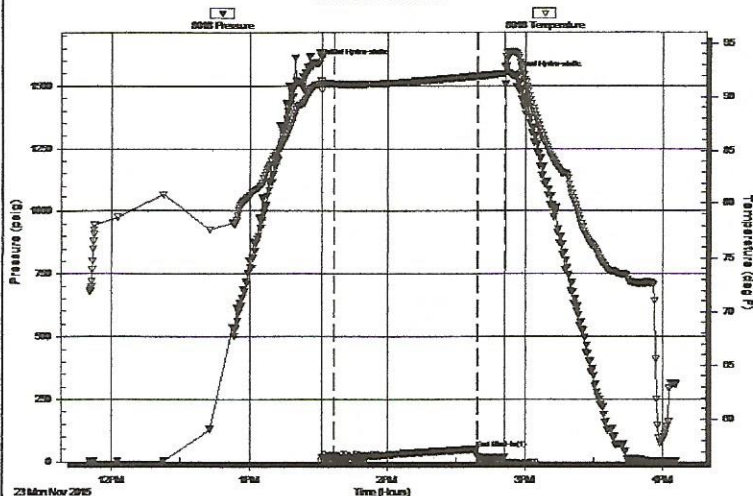
16:06:03

Time On Btm: 2015.11.23 @ 13:29:33

Time Off Btm: 2015.11.23 @ 14:54:18

TEST COMMENT: 5-IFP-surface bl , died in 3 min
60-ISIP-no bl
10-FFP-no bl
pulled tool

Pressure vs. Time



PRESSURE SUMMARY

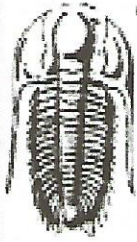
Time (Min.)	Pressure (psig)	Temp (deg F)	Annotation
0	1588.75	91.11	Initial Hydro-static
2	17.11	90.60	Open To Flow (1)
8	17.26	91.20	Shut-In(1)
70	52.05	91.95	End Shut-In(1)
70	18.75	91.95	Open To Flow (2)
82	18.98	92.18	Shut-In(2)
85	1541.42	94.24	Final Hydro-static

Recovery

Length (ft)	Description	Volume (bbl)
2.00	Mud	0.01

Gas Rates

	Choke (inches)	Pressure (psig)	Gas Rate (Mcf/d)



TRILOBITE TESTING, INC

DRILL STEM TEST REPORT

Staab Oil Co
 1607 Hopewell Rd
 Hays Ks 67601-9443
 ATTN: Frank & Janel Staab

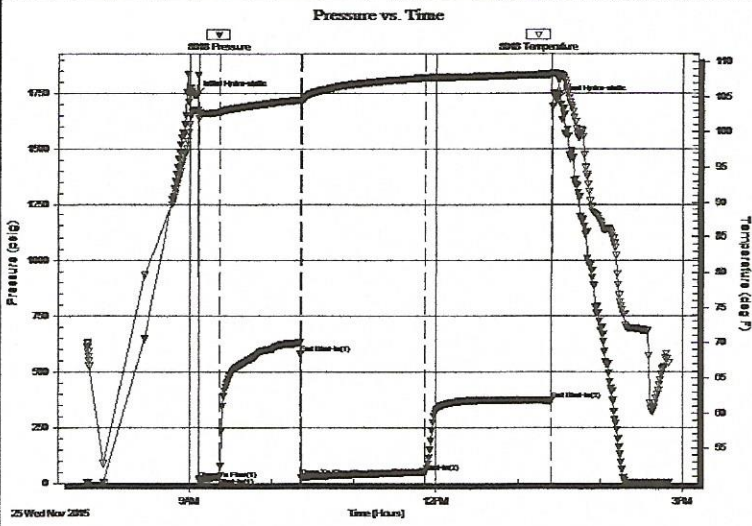
32-12s-17w Ellis
Rome Wilfric #1
 Job Ticket: 64907 **DST#: 3**
 Test Start: 2015.11.25 @ 07:45:11

GENERAL INFORMATION:

Formation: **Abuckle**
 Deviated: No Whipstock: ft (KB)
 Time Tool Opened: 09:06:51
 Time Test Ended: 14:49:50
 Interval: **3597.00 ft (KB) To 3612.00 ft (KB) (TVD)**
 Total Depth: 3680.00 ft (KB) (TVD)
 Hole Diameter: 7.85 inches Hole Condition: Fair
 Test Type: Conventional Straddle (Reset)
 Tester: Ray Schwager
 Unit No: 70
 Reference Elevations: 2054.00 ft (KB)
 2049.00 ft (CF)
 KB to GR/CF: 5.00 ft

Serial #: 8018 Inside
 Press@RunDepth: 50.83 psig @ 3603.00 ft (KB) Capacity: 8000.00 psig
 Start Date: 2015.11.25 End Date: 2015.11.25 Last Calib.: 2015.11.25
 Start Time: 07:45:11 End Time: 14:49:50 Time On Btm: 2015.11.25 @ 09:04:36
 Time Off Btm: 2015.11.25 @ 13:27:35

TEST COMMENT: 15-IFP-w k bl thru-out 1/4"to 1"bl
 60-ISIP-no bl
 90-FFP-no bl 1st 5min. then surface bl thru-out
 90-FSIP-no bl

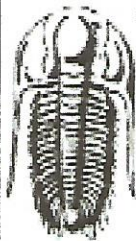


PRESSURE SUMMARY			
Time (Min.)	Pressure (psig)	Temp (deg F)	Annotation
0	1741.62	103.12	Initial Hydro-static
3	16.32	101.93	Open To Flow (1)
17	26.27	102.81	Shut-In(1)
77	582.28	104.51	End Shut-In(1)
77	26.89	104.32	Open To Flow (2)
168	50.83	107.66	Shut-In(2)
260	370.13	108.21	End Shut-In(2)
263	1717.14	108.30	Final Hydro-static

Recovery		
Length (ft)	Description	Volume (bbl)
75.00	MW 20%M80%W w / show of oil	0.53

Gas Rates			
	Choke (inches)	Pressure (psig)	Gas Rate (Mcf/d)

* Recovery from multiple tests



TRILOBITE TESTING, INC

DRILL STEM TEST REPORT

Staab Oil Co
 1607 Hopewell Rd
 Hays Ks 67601-9443
 ATTN: Frank & Janel Staab

32-12s-17w Ellis
Rome Wilfric #1
 Job Ticket: 64906 **DST#: 2**
 Test Start: 2015.11.24 @ 00:25:35

GENERAL INFORMATION:

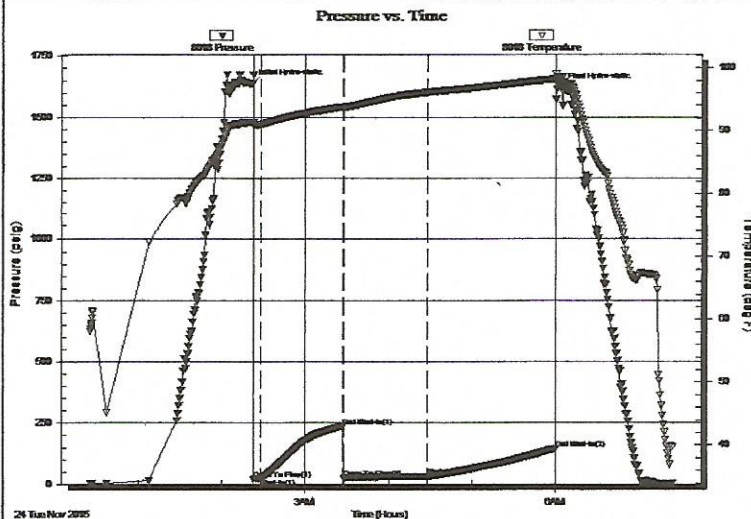
Formation: **LKC D-G**
 Deviated: No Whipstock: ft (KB)
 Time Tool Opened: 02:23:00
 Time Test Ended: 07:23:44
 Test Type: Conventional Bottom Hole (Reset)
 Tester: Ray Schwager
 Unit No: 70
 Interval: **3369.00 ft (KB) To 3441.00 ft (KB) (TVD)**
 Total Depth: 3431.00 ft (KB) (TVD)
 Hole Diameter: 7.85 inches Hole Condition: Fair
 Reference Elevations: 2054.00 ft (KB)
 2049.00 ft (CF)
 KB to GR/CF: 5.00 ft

Serial #: 8018

Inside

Press@RunDepth: 33.01 psig @ 3375.00 ft (KB) Capacity: 8000.00 psig
 Start Date: 2015.11.24 End Date: 2015.11.24 Last Calib.: 2015.11.24
 Start Time: 00:25:35 End Time: 07:23:44 Time On Btm: 2015.11.24 @ 02:21:00
 Time Off Btm: 2015.11.24 @ 06:03:29

TEST COMMENT: 5-IFP-w k bl thru-out 1/2" to 1 1/2" bl
 60-ISIP-no bl
 60-FFP-w k bl thru-out 1" to 2 1/2" bl
 90-FSIP-no bl



PRESSURE SUMMARY

Time (Min.)	Pressure (psig)	Temp (deg F)	Annotation
0	1637.00	91.31	Initial Hydro-static
2	19.92	90.80	Open To Flow (1)
8	23.81	91.05	Shut-In(1)
67	237.05	93.81	End Shut-In(1)
67	23.22	93.76	Open To Flow (2)
127	33.01	96.11	Shut-In(2)
219	145.22	98.21	End Shut-In(2)
223	1620.21	98.63	Final Hydro-static

Recovery

Length (ft)	Description	Volume (bbl)
0.00	60'GIP	0.00
30.00	SOCM 3%O97%M	0.21

Gas Rates

	Choke (inches)	Pressure (psig)	Gas Rate (Mcf/d)

* Recovery from multiple tests