



TRILOBITE TESTING, INC.

DRILL STEM TEST REPORT

K3 Oil & Gas
 24900 Pitkin Rd. Ste 305
 The Woodlands Tx. 77386
 ATTN: Erin Csapos

3-35s-4w Sumner Ks.
Boyer #3-3
 Job Ticket: 57937 **DST#: 1**
 Test Start: 2016.02.27 @ 20:47:45

GENERAL INFORMATION:

Formation: **Miss.**
 Deviated: No Whipstock: ft (KB)
 Time Tool Opened: 23:13:45
 Time Test Ended: 07:17:45
 Interval: **4670.00 ft (KB) To 4842.00 ft (KB) (TVD)**
 Total Depth: 4842.00 ft (KB) (TVD)
 Hole Diameter: 7.88 inches Hole Condition: Poor
 Test Type: Conventional Bottom Hole (Initial)
 Tester: Gary Pevoteaux
 Unit No: 80
 Reference Elevations: 1179.00 ft (KB)
 1174.00 ft (CF)
 KB to GR/CF: 5.00 ft

Serial #: 9124

Outside

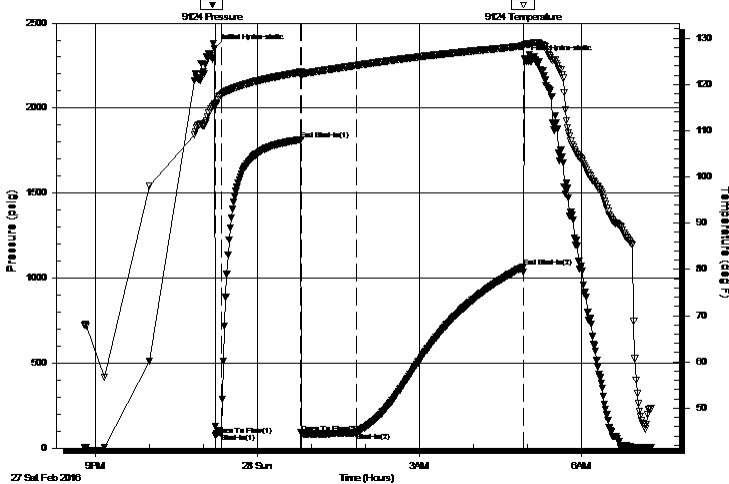
Press @ Run Depth: 92.45 psig @ 4671.00 ft (KB) Capacity: 8000.00 psig
 Start Date: 2016.02.27 End Date: 2016.02.28 Last Calib.: 2016.02.28
 Start Time: 20:47:50 End Time: 07:17:45 Time On Btm: 2016.02.27 @ 23:12:45
 Time Off Btm: 2016.02.28 @ 04:57:15

TEST COMMENT: IF: Weak blow . 3 1/3".
 IS: No blow .
 FF: Weak blow . 1/2 - 1".
 FS: No blow .

PRESSURE SUMMARY

Time (Min.)	Pressure (psig)	Temp (deg F)	Annotation
0	2349.93	115.75	Initial Hydro-static
1	77.41	115.66	Open To Flow (1)
7	87.78	117.84	Shut-In(1)
96	1814.40	122.65	End Shut-In(1)
96	87.35	122.18	Open To Flow (2)
157	92.45	124.07	Shut-In(2)
343	1066.76	128.28	End Shut-In(2)
345	2287.86	128.60	Final Hydro-static

Pressure vs. Time



Recovery

Length (ft)	Description	Volume (bbl)
60.00	Drig.mud w few oil specs	0.30
90.00	Drig.mud	0.72

Gas Rates

Choke (inches)	Pressure (psig)	Gas Rate (Mcf/d)



TRILOBITE TESTING, INC.

DRILL STEM TEST REPORT

K3 Oil & Gas
 24900 Pitkin Rd. Ste 305
 The Woodlands Tx. 77386
 ATTN: Erin Csapos

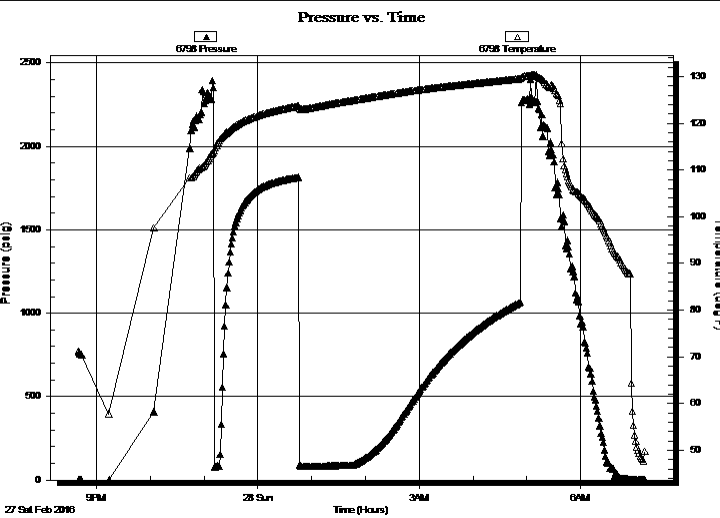
3-35s-4w Sumner Ks.
Boyer #3-3
 Job Ticket: 57937 **DST#: 1**
 Test Start: 2016.02.27 @ 20:47:45

GENERAL INFORMATION:

Formation: **Miss.**
 Deviated: No Whipstock: ft (KB)
 Time Tool Opened: 23:13:45
 Time Test Ended: 07:17:45
 Interval: **4670.00 ft (KB) To 4842.00 ft (KB) (TVD)**
 Total Depth: 4842.00 ft (KB) (TVD)
 Hole Diameter: 7.88 inches Hole Condition: Poor
 Test Type: Conventional Bottom Hole (Initial)
 Tester: Gary Pevoteaux
 Unit No: 80
 Reference Elevations: 1179.00 ft (KB)
 1174.00 ft (CF)
 KB to GR/CF: 5.00 ft

Serial #: 6798 Inside
 Press @ Run Depth: psig @ 4671.00 ft (KB) Capacity: 8000.00 psig
 Start Date: 2016.02.27 End Date: 2016.02.28 Last Calib.: 2016.02.28
 Start Time: 20:39:50 End Time: 07:12:15 Time On Btm:
 Time Off Btm:

TEST COMMENT: IF: Weak blow . 3 1/3".
 IS: No blow .
 FF: Weak blow . 1/2 - 1".
 FS: No blow .



PRESSURE SUMMARY			
Time (Min.)	Pressure (psig)	Temp (deg F)	Annotation

Recovery		
Length (ft)	Description	Volume (bbl)
60.00	Drig.mud w few oil specs	0.30
90.00	Drig.mud	0.72

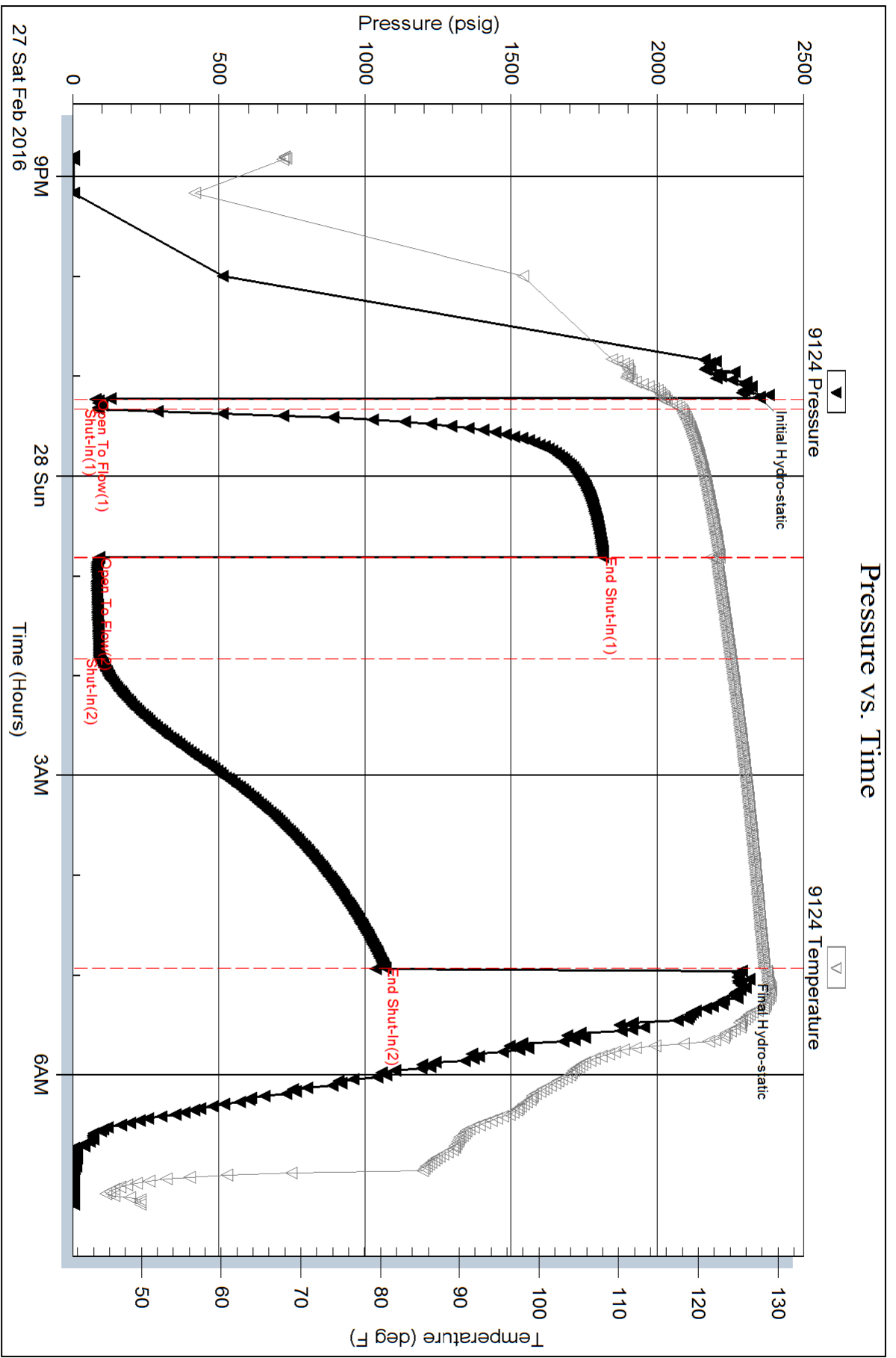
Gas Rates			
	Choke (inches)	Pressure (psig)	Gas Rate (Mcf/d)

Serial #: 9124

Outside K3 Oil & Gas

Boyer #3-3

DST Test Number: 1



Serial #: 6798

Inside

K3 Oil & Gas

Boyer #3-3

DST Test Number: 1

