



## DRILL STEM TEST REPORT

Prepared For: **Stelbar Oil Coporation Inc**

1625 N. Waterfront Pkwy  
Suite 200  
Wichita KS 67206-6602

ATTN: Ty Lunn

**6-16s-21w Ness,KS**

**NKD Farms-Felder Unit #1-6**

Start Date: 2016.02.27 @ 20:45:13

End Date: 2016.02.28 @ 02:01:07

Job Ticket #: 64919                      DST #: 1

Trilobite Testing, Inc  
PO Box 362 Hays, KS 67601  
ph: 785-625-4778 fax: 785-625-5620

Printed: 2016.02.29 @ 09:27:43



**TRILOBITE TESTING, INC.**

# DRILL STEM TEST REPORT

Stelbar Oil Corporation Inc  
 1625 N. Waterfront Pkwy  
 Suite 200  
 Wichita KS 67206-6602  
 ATTN: Ty Lunn

**NKD Farms-Felder Unit #1-6**  
**6-16s-21w Ness,KS**  
 Job Ticket: 64919 **DST#: 1**  
 Test Start: 2016.02.27 @ 20:45:13

## GENERAL INFORMATION:

Formation: **Cherokee "C" Sand**  
 Deviated: No Whipstock: ft (KB)  
 Time Tool Opened: 22:48:23  
 Time Test Ended: 02:01:07  
 Interval: **4309.00 ft (KB) To 4322.00 ft (KB) (TVD)**  
 Total Depth: 4322.00 ft (KB) (TVD)  
 Hole Diameter: 7.88 inches Hole Condition: Fair  
 Test Type: Conventional Bottom Hole (Initial)  
 Tester: Ray Schwager  
 Unit No: 70  
 Reference Elevations: 2405.00 ft (KB)  
 2400.00 ft (CF)  
 KB to GR/CF: 5.00 ft

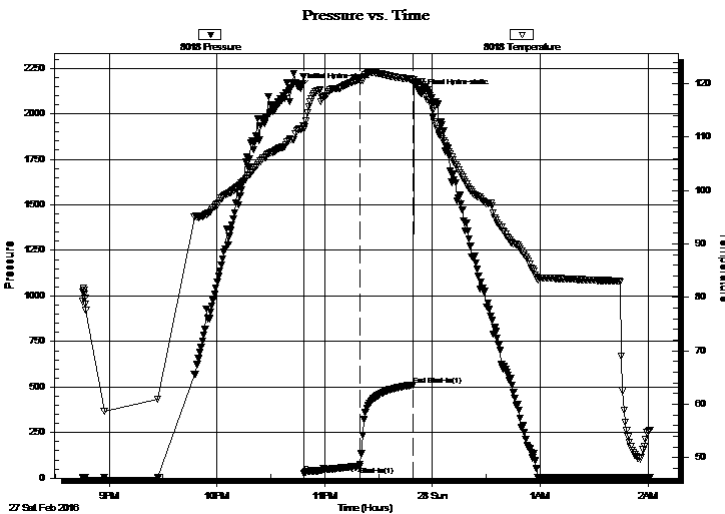
## Serial #: 8018

Inside

Press@RunDepth: 66.69 psig @ 4310.00 ft (KB) Capacity: 8000.00 psig  
 Start Date: 2016.02.27 End Date: 2016.02.28 Last Calib.: 2016.02.28  
 Start Time: 20:45:13 End Time: 02:01:07 Time On Btm: 2016.02.27 @ 22:46:38  
 Time Off Btm: 2016.02.27 @ 23:53:38

TEST COMMENT: 30-IFP-w k to a strg bl in 18 min  
 30-ISIP-no bl bk

## PRESSURE SUMMARY



Time (Min.)	Pressure (psig)	Temp (deg F)	Annotation
0	2141.45	111.52	Initial Hydro-static
2	23.71	111.49	Open To Flow (1)
33	66.69	120.71	Shut-In(1)
63	511.72	120.81	End Shut-In(1)
67	2109.03	120.39	Final Hydro-static

## Recovery

Length (ft)	Description	Volume (bbl)
0.00	170' GIP	0.00
115.00	CO	1.34
30.00	O&GCM 10%G20%O70%M	0.42

## Gas Rates

Choke (inches)	Pressure (psig)	Gas Rate (Mcf/d)



**TRILOBITE  
TESTING, INC.**

## DRILL STEM TEST REPORT

Stelbar Oil Corporation Inc

1625 N. Waterfront Pkwy  
Suite 200  
Wichita KS 67206-6602  
ATTN: Ty Lunn

**NKD Farms-Felder Unit #1-6**

**6-16s-21w Ness,KS**

Job Ticket: 64919 **DST#: 1**

Test Start: 2016.02.27 @ 20:45:13

### GENERAL INFORMATION:

Formation: **Cherokee "C" Sand**

Deviated: No Whipstock: ft (KB)

Time Tool Opened: 22:48:23

Time Test Ended: 02:01:07

Test Type: Conventional Bottom Hole (Initial)

Tester: Ray Schwager

Unit No: 70

**Interval: 4309.00 ft (KB) To 4322.00 ft (KB) (TVD)**

Reference Elevations: 2405.00 ft (KB)

Total Depth: 4322.00 ft (KB) (TVD)

2400.00 ft (CF)

Hole Diameter: 7.88 inches Hole Condition: Fair

KB to GR/CF: 5.00 ft

**Serial #: 8700 Outside**

Press@RunDepth: psig @ 4310.00 ft (KB)

Capacity: 8000.00 psig

Start Date: 2016.02.27

End Date:

2016.02.28

Last Calib.:

2016.02.28

Start Time: 20:46:01

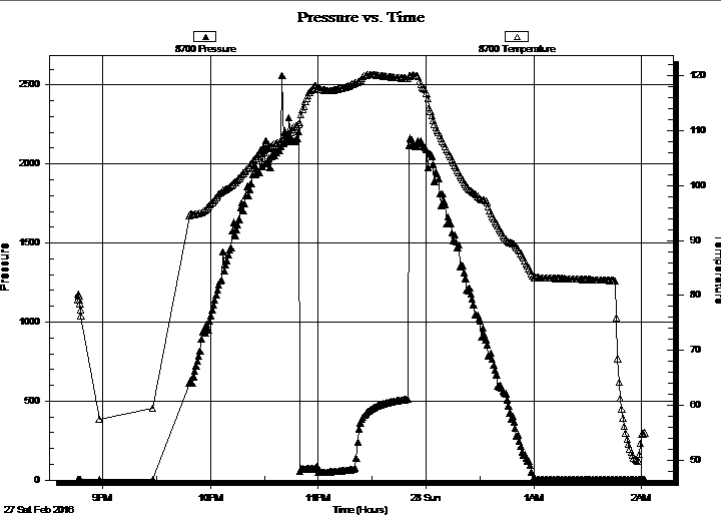
End Time:

02:01:55

Time On Btm:

Time Off Btm:

TEST COMMENT: 30-IFP-w k to a strg bl in 18 min  
30-ISIP-no bl bk



### PRESSURE SUMMARY

Time (Min.)	Pressure (psig)	Temp (deg F)	Annotation

### Recovery

Length (ft)	Description	Volume (bbl)
0.00	170' GIP	0.00
115.00	CO	1.34
30.00	O&GCM 10%G20%O70%M	0.42

### Gas Rates

Choke (inches)	Pressure (psig)	Gas Rate (Mcf/d)



**TRILOBITE  
TESTING, INC**

# DRILL STEM TEST REPORT

**TOOL DIAGRAM**

Stelbar Oil Coporation Inc  
1625 N. Waterfront Pkwy  
Suite 200  
Wichita KS 67206-6602  
ATTN: Ty Lunn

**NKD Farms-Felder Unit #1-6**  
**6-16s-21w Ness,KS**  
Job Ticket: 64919      **DST#: 1**  
Test Start: 2016.02.27 @ 20:45:13

**Tool Information**

Drill Pipe:	Length: 4273.00 ft	Diameter: 3.80 inches	Volume: 59.94 bbl	Tool Weight: 2200.00 lb
Heavy Wt. Pipe:	Length: 0.00 ft	Diameter: 0.00 inches	Volume: 0.00 bbl	Weight set on Packer: 25000.00 lb
Drill Collar:	Length: 30.00 ft	Diameter: 2.25 inches	Volume: 0.15 bbl	Weight to Pull Loose: 55000.00 lb
			Total Volume: 60.09 bbl	Tool Chased 0.00 ft
Drill Pipe Above KB:	26.00 ft			String Weight: Initial 47000.00 lb
Depth to Top Packer:	4309.00 ft			Final 48000.00 lb
Depth to Bottom Packer:	ft			
Interval between Packers:	13.00 ft			
Tool Length:	45.00 ft			
Number of Packers:	2	Diameter: 6.75 inches		

Tool Comments:

Tool Description	Length (ft)	Serial No.	Position	Depth (ft)	Accum. Lengths
------------------	-------------	------------	----------	------------	----------------

Change Over Sub	1.00			4278.00	
Shut In Tool	5.00			4283.00	
Sampler	3.00			4286.00	
Hydraulic tool	5.00			4291.00	
Jars	5.00			4296.00	
Safety Joint	3.00			4299.00	
Packer	5.00			4304.00	32.00 Bottom Of Top Packer
Packer	5.00			4309.00	
Stubb	1.00			4310.00	
Recorder	0.00	8018	Inside	4310.00	
Recorder	0.00	8700	Outside	4310.00	
Perforations	9.00			4319.00	
Bullnose	3.00			4322.00	13.00 Bottom Packers & Anchor

**Total Tool Length: 45.00**



**TRILOBITE  
TESTING, INC**

# DRILL STEM TEST REPORT

## FLUID SUMMARY

Stelbar Oil Coporation Inc  
1625 N. Waterfront Pkw y  
Suite 200  
Wichita KS 67206-6602  
ATTN: Ty Lunn

**NKD Farms-Felder Unit #1-6**  
**6-16s-21w Ness,KS**  
Job Ticket: 64919      **DST#: 1**  
Test Start: 2016.02.27 @ 20:45:13

### Mud and Cushion Information

Mud Type: Gel Chem	Cushion Type:	Oil API: 41 deg API
Mud Weight: 9.00 lb/gal	Cushion Length: ft	Water Salinity: ppm
Viscosity: 52.00 sec/qt	Cushion Volume: bbl	
Water Loss: 7.18 in <sup>3</sup>	Gas Cushion Type:	
Resistivity: ohm.m	Gas Cushion Pressure: psig	
Salinity: 2400.00 ppm		
Filter Cake: 1.00 inches		

### Recovery Information

Recovery Table

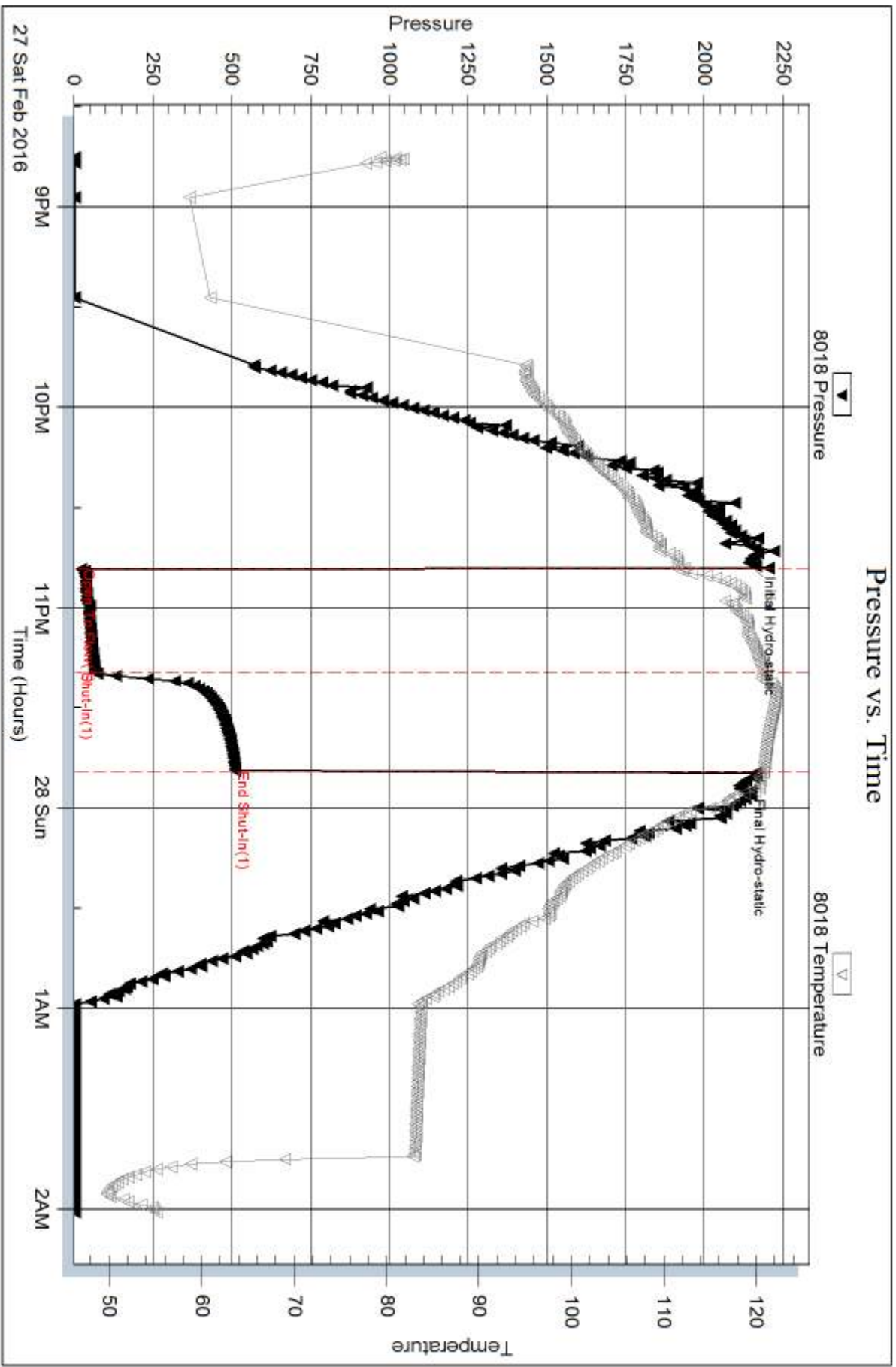
Length ft	Description	Volume bbl
0.00	170' GIP	0.000
115.00	CO	1.340
30.00	O&GCM 10%G20%O70%M	0.421

Total Length: 145.00 ft      Total Volume: 1.761 bbl

Num Fluid Samples: 0      Num Gas Bombs: 0      Serial #:

Laboratory Name:      Laboratory Location:

Recovery Comments: Sampler Data: PSI 70# 1000MLgas 2000ML Oil

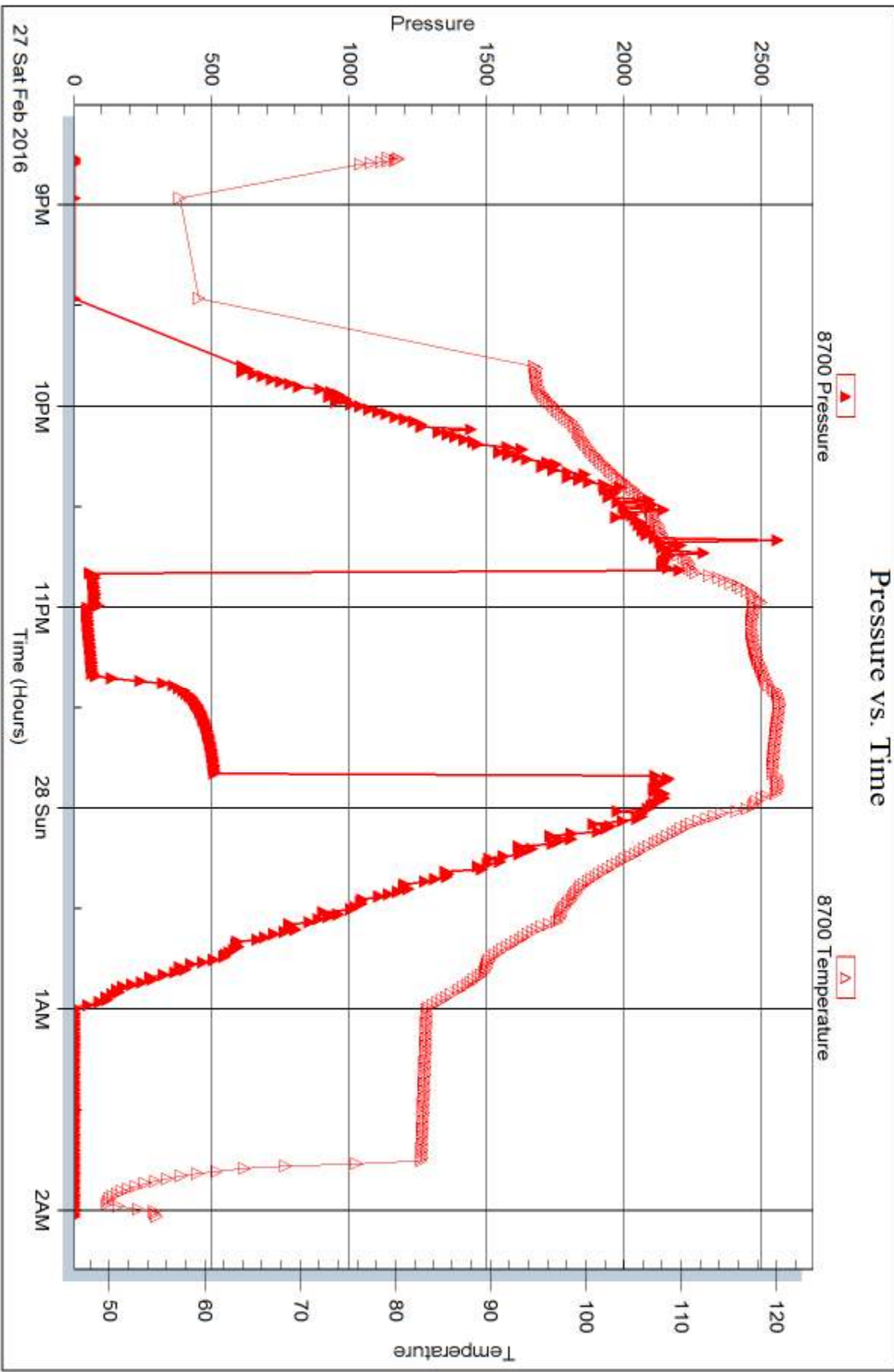


Serial #: 8700

Outside Stebar Oil Coporation Inc

6-165-21w Ness, KS

DST Test Number: 1



Trilobite Testing, Inc

Ref. No: 64919

Printed: 2016.02.29 @ 09:27:44



## DRILL STEM TEST REPORT

Prepared For: **Stelbar Oil Coporation Inc**

1625 N. Waterfront Pkwy  
Suite 200  
Wichita KS 67206-6602

ATTN: Ty Lunn

**6-16s-21w Ness,KS**

**NKD Farms-Felder Unit #1-6**

Start Date: 2016.02.28 @ 08:20:53

End Date: 2016.02.28 @ 13:21:02

Job Ticket #: 64920                      DST #: 2

Trilobite Testing, Inc

PO Box 362 Hays, KS 67601

ph: 785-625-4778 fax: 785-625-5620

Printed: 2016.02.29 @ 09:27:04





**TRILOBITE TESTING, INC**

# DRILL STEM TEST REPORT

Stelbar Oil Corporation Inc  
 1625 N. Waterfront Pkwy  
 Suite 200  
 Wichita KS 67206-6602  
 ATTN: Ty Lunn

**NKD Farms-Felder Unit #1-6**  
**6-16s-21w Ness,KS**  
 Job Ticket: 64920 **DST#: 2**  
 Test Start: 2016.02.28 @ 08:20:53

## GENERAL INFORMATION:

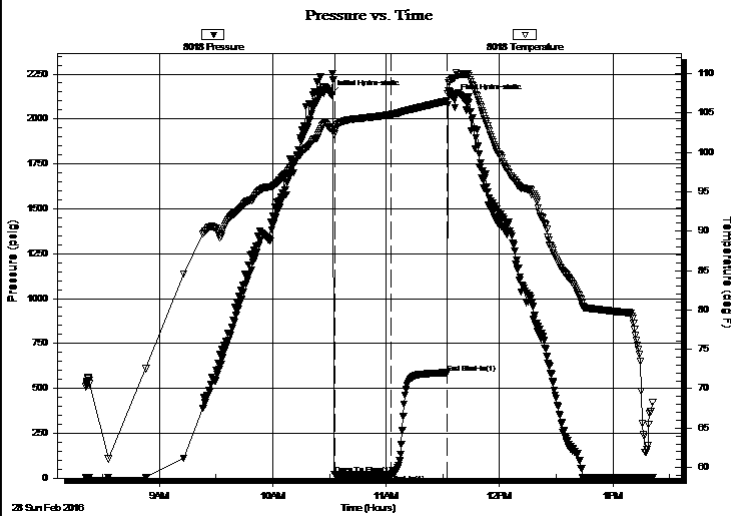
Formation: **Cherokee "C" Sand**  
 Deviated: No Whipstock: ft (KB)  
 Time Tool Opened: 10:32:33  
 Time Test Ended: 13:21:02  
 Interval: **4322.00 ft (KB) To 4327.00 ft (KB) (TVD)**  
 Total Depth: 4327.00 ft (KB) (TVD)  
 Hole Diameter: 7.88 inches Hole Condition: Fair  
 Test Type: Conventional Bottom Hole (Reset)  
 Tester: Ray Schwager  
 Unit No: 70  
 Reference Elevations: 2405.00 ft (KB)  
 2400.00 ft (CF)  
 KB to GR/CF: 5.00 ft

## Serial #: 8018

Inside

Press@RunDepth: 22.44 psig @ 4323.00 ft (KB) Capacity: 8000.00 psig  
 Start Date: 2016.02.28 End Date: 2016.02.28 Last Calib.: 2016.02.28  
 Start Time: 08:20:53 End Time: 13:21:02 Time On Btm: 2016.02.28 @ 10:30:48  
 Time Off Btm: 2016.02.28 @ 11:35:48

TEST COMMENT: 30-IFP-w k surface bl thru-out  
 30-ISIP- no bl bk



## PRESSURE SUMMARY

Time (Min.)	Pressure (psig)	Temp (deg F)	Annotation
0	2134.84	102.98	Initial Hydro-static
2	19.37	102.31	Open To Flow (1)
32	22.44	104.82	Shut-In(1)
62	587.53	106.54	End Shut-In(1)
65	2114.99	109.41	Final Hydro-static

## Recovery

Length (ft)	Description	Volume (bbl)
1.00	SOCM 1%O99%M	0.00

\* Recovery from multiple tests

## Gas Rates

	Choke (inches)	Pressure (psig)	Gas Rate (Mcf/d)



**TRILOBITE  
TESTING, INC**

# DRILL STEM TEST REPORT

Stelbar Oil Coporation Inc  
1625 N. Waterfront Pkw y  
Suite 200  
Wichita KS 67206-6602  
ATTN: Ty Lunn

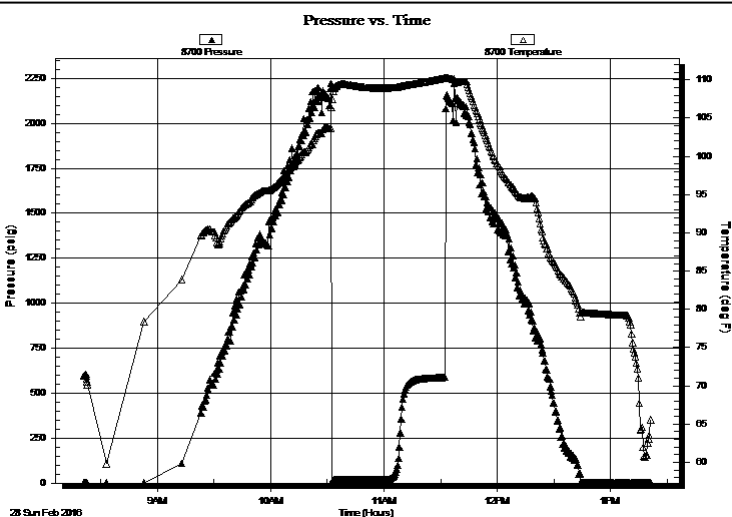
**NKD Farms-Felder Unit #1-6**  
**6-16s-21w Ness,KS**  
Job Ticket: 64920 **DST#: 2**  
Test Start: 2016.02.28 @ 08:20:53

## GENERAL INFORMATION:

Formation: **Cherokee "C" Sand**  
Deviated: No Whipstock: ft (KB)  
Time Tool Opened: 10:32:33  
Time Test Ended: 13:21:02  
Interval: **4322.00 ft (KB) To 4327.00 ft (KB) (TVD)**  
Total Depth: 4327.00 ft (KB) (TVD)  
Hole Diameter: 7.88 inches Hole Condition: Fair  
Test Type: Conventional Bottom Hole (Reset)  
Tester: Ray Schwager  
Unit No: 70  
Reference Elevations: 2405.00 ft (KB)  
2400.00 ft (CF)  
KB to GR/CF: 5.00 ft

**Serial #: 8700** **Outside**  
Press@RunDepth: psig @ 4323.00 ft (KB) Capacity: 8000.00 psig  
Start Date: 2016.02.28 End Date: 2016.02.28 Last Calib.: 2016.02.28  
Start Time: 08:21:00 End Time: 13:21:09 Time On Btm:  
Time Off Btm:

TEST COMMENT: 30-IFP-w k surface bl thru-out  
30-ISIP- no bl bk



## PRESSURE SUMMARY

Time (Min.)	Pressure (psig)	Temp (deg F)	Annotation

## Recovery

Length (ft)	Description	Volume (bbl)
1.00	SOCM 1%O99%M	0.00

## Gas Rates

Choke (inches)	Pressure (psig)	Gas Rate (Mcf/d)

\* Recovery from multiple tests



**TRILOBITE  
TESTING, INC**

# DRILL STEM TEST REPORT

**TOOL DIAGRAM**

Stelbar Oil Coporation Inc  
1625 N. Waterfront Plw y  
Suite 200  
Wichita KS 67206-6602  
ATTN: Ty Lunn

**NKD Farms-Felder Unit #1-6**  
**6-16s-21w Ness,KS**  
Job Ticket: 64920 **DST#: 2**  
Test Start: 2016.02.28 @ 08:20:53

## Tool Information

Drill Pipe:	Length: 4275.00 ft	Diameter: 3.80 inches	Volume: 59.97 bbl	Tool Weight: 2200.00 lb
Heavy Wt. Pipe:	Length: 0.00 ft	Diameter: 0.00 inches	Volume: 0.00 bbl	Weight set on Packer: 2500.00 lb
Drill Collar:	Length: 30.00 ft	Diameter: 2.25 inches	Volume: 0.15 bbl	Weight to Pull Loose: 55000.00 lb
			<u>Total Volume: 60.12 bbl</u>	Tool Chased 0.00 ft
Drill Pipe Above KB:	15.00 ft			String Weight: Initial 47000.00 lb
Depth to Top Packer:	4322.00 ft			Final 47000.00 lb
Depth to Bottom Packer:	ft			
Interval betw een Packers:	5.00 ft			
Tool Length:	37.00 ft			
Number of Packers:	2	Diameter: 6.75 inches		

Tool Comments:

Tool Description	Length (ft)	Serial No.	Position	Depth (ft)	Accum. Lengths
------------------	-------------	------------	----------	------------	----------------

Change Over Sub	1.00			4291.00	
Shut In Tool	5.00			4296.00	
Sampler	3.00			4299.00	
Hydraulic tool	5.00			4304.00	
Jars	5.00			4309.00	
Safety Joint	3.00			4312.00	
Packer	5.00			4317.00	32.00 Bottom Of Top Packer
Packer	5.00			4322.00	
Stubb	1.00			4323.00	
Recorder	0.00	8018	Inside	4323.00	
Recorder	0.00	8700	Outside	4323.00	
Perforations	1.00			4324.00	
Bullnose	3.00			4327.00	5.00 Bottom Packers & Anchor

**Total Tool Length: 37.00**



**TRILOBITE  
TESTING, INC**

# DRILL STEM TEST REPORT

## FLUID SUMMARY

Stelbar Oil Coporation Inc  
1625 N. Waterfront Pkw y  
Suite 200  
Wichita KS 67206-6602  
ATTN: Ty Lunn

**NKD Farms-Felder Unit #1-6**  
**6-16s-21w Ness,KS**  
Job Ticket: 64920      **DST#: 2**  
Test Start: 2016.02.28 @ 08:20:53

### Mud and Cushion Information

Mud Type: Gel Chem	Cushion Type:	Oil API:	deg API
Mud Weight: 9.00 lb/gal	Cushion Length: ft	Water Salinity:	ppm
Viscosity: 60.00 sec/qt	Cushion Volume: bbl		
Water Loss: 7.19 in <sup>3</sup>	Gas Cushion Type:		
Resistivity: ohm.m	Gas Cushion Pressure: psig		
Salinity: 2400.00 ppm			
Filter Cake: 1.00 inches			

### Recovery Information

Recovery Table

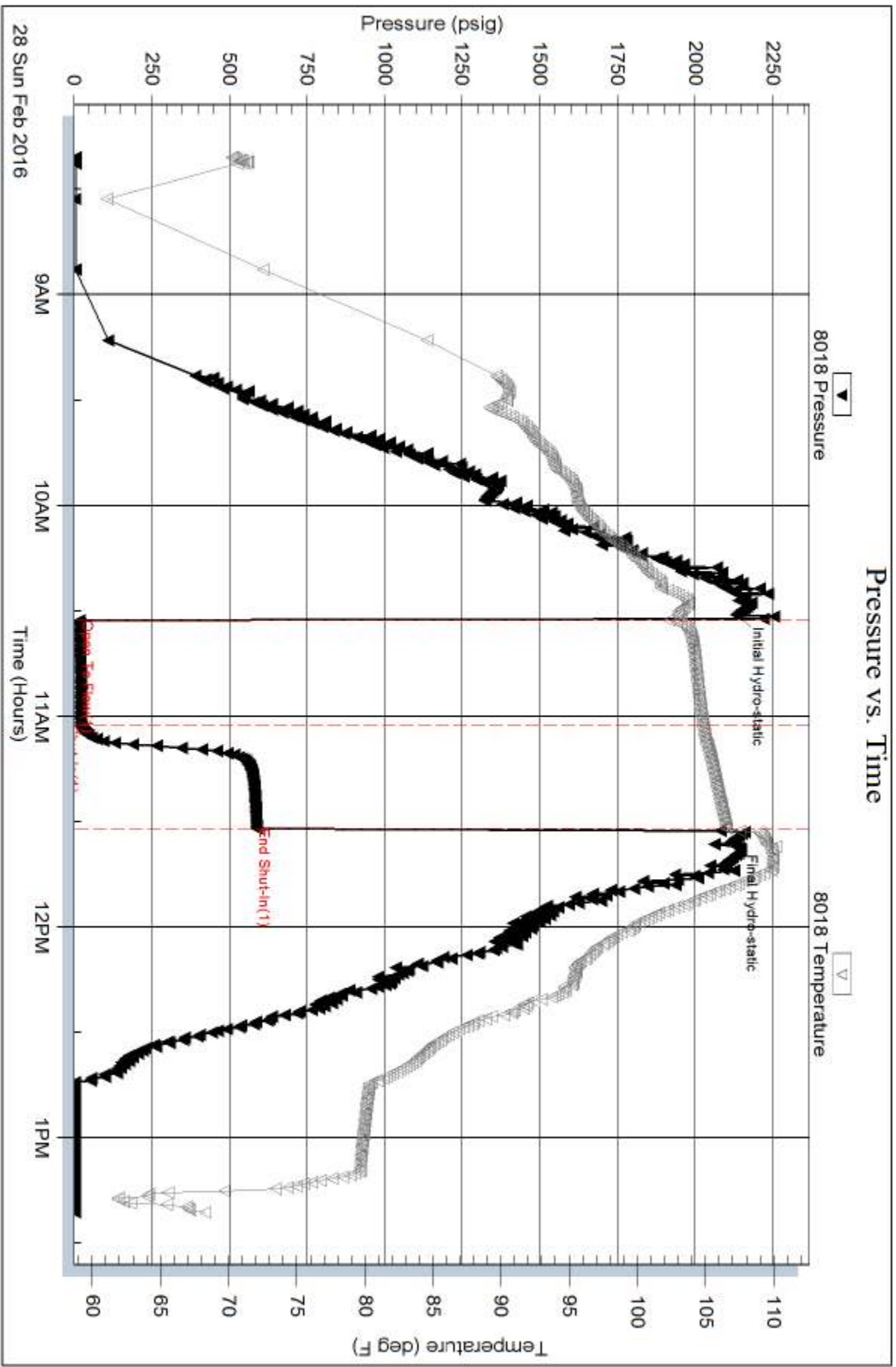
Length ft	Description	Volume bbl
1.00	SOCM 1%O99%M	0.005

Total Length: 1.00 ft      Total Volume: 0.005 bbl

Num Fluid Samples: 0      Num Gas Bombs: 0      Serial #:

Laboratory Name:      Laboratory Location:

Recovery Comments: Sampler Data: PSI 20# 3000ML mud ,show of oil

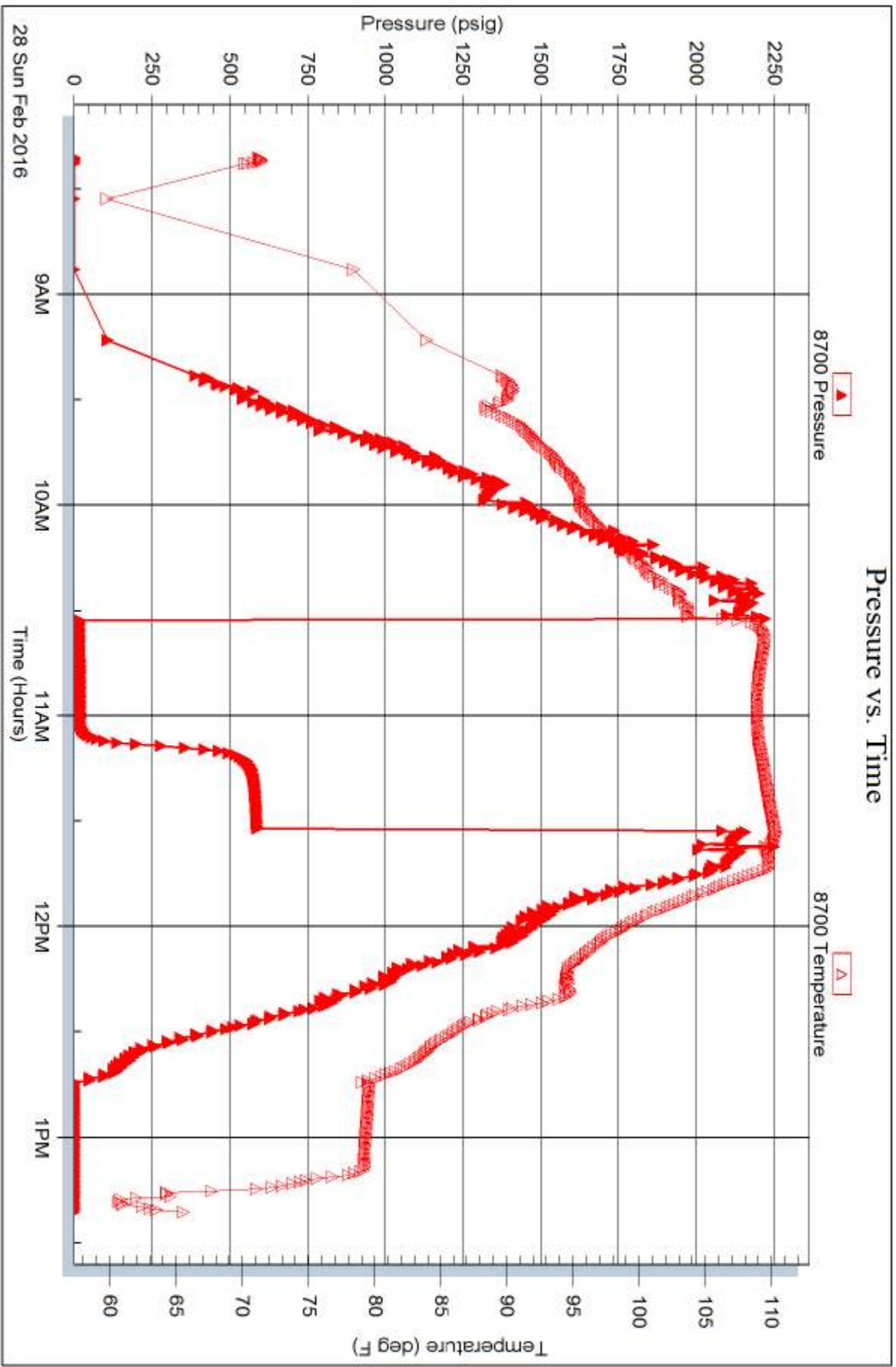


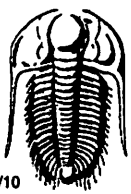
Serial #: 8700

Outside Stebar Oil Coporation Inc

6-165-21w Ness, KS

DST Test Number: 2





# TRILOBITE TESTING INC.

1515 Commerce Parkway • Hays, Kansas 67601

## Test Ticket

NO. 64919

Well Name & No. NKD FARMS-FELDER UNIT 1-6 Test No. 1 Date 2-27-16  
 Company STELBAR OIL CORPORATION, INC Elevation 2405 KB 2400 GL  
 Address 1625 N. WATERFRONT PKWY, SUITE 200 WICHITA, KS 67206-6602  
 Co. Rep / Geo. DAVE GOLDAK Rig MURFIN RIG 16  
 Location: Sec. 6 Twp. 16<sup>s</sup> Rge. 21<sup>w</sup> Co. Ness State Ks

Interval Tested 4309-4322 Zone Tested Cher "C" sand  
 Anchor Length 13 Drill Pipe Run 4223 Mud Wt. 9.2  
 Top Packer Depth 4304 Drill Collars Run 30 Vis 52  
 Bottom Packer Depth 4309 Wt. Pipe Run — WL 7.2  
 Total Depth 4322 Chlorides 2400 ppm System LCM 2#  
 Blow Description I/FP - WEAK TO STRONG IN 18 MIN  
ISIP - NO BLOW

Rec	Feet of	%gas	%oil	%water	%mud
<u>170</u>	<u>GFA</u>				
<u>115</u>	<u>CO</u>				
<u>30</u>	<u>O+GCM</u>	<u>10</u>	<u>20</u>	<u>70</u>	
Rec Total	<u>145</u>	BHT	<u>120</u>	Gravity	<u>41</u>

(A) Initial Hydrostatic 2141  
 (B) First Initial Flow 23  
 (C) First Final Flow 66  
 (D) Initial Shut-In 511  
 (E) Second Initial Flow —  
 (F) Second Final Flow —  
 (G) Final Shut-In —  
 (H) Final Hydrostatic 2109

API RW — @ — °F Chlorides — ppm  
 Test 1150  
 Jars 250  
 Safety Joint 75  
 Circ Sub  
 Hourly Standby  
 Mileage 102 RT 76.50  
 Sampler 250  
 Straddle  
 Shale Packer 250  
 Extra Packer  
 Extra Recorder  
 Day Standby  
 Accessibility  
 Sub Total 2051.50

T-On Location 2010  
 T-Started 2045  
 T-Open 2250  
 T-Pulled 2350  
 T-Out 0201  
 Comments  
 Ruined Shale Packer  
 Ruined Packer  
 Extra Copies  
 Sub Total 0  
 Total 2051.50  
 MP/DST Disc't

Initial Open 30  
 Initial Shut-In 30  
 Final Flow —  
 Final Shut-In —

Approved By [Signature] Our Representative RAY SCHWAGER *Thank you*  
 Trilobite Testing Inc. shall not be liable for damaged of any kind of the property or personnel of the one for whom a test is made, or for any loss suffered or sustained, directly or indirectly, through the use of its equipment, or its statements of opinion concerning the results of any test, tools lost or damaged in the hole shall be paid for at cost by the party for whom the test is made.



# TRILOBITE TESTING, INC.

1515 Commerce Parkway • Hays, Kansas 67601

## FLUID SAMPLER DATA

Ticket No. 64919 Date 2-27-16  
 Company Name STELBAR OIL Corp.  
 Lease NKD Farms - Felder Unit 1-b Test No. 1  
 County Ness Sec. 6 Twp. 16<sup>s</sup> Rng. 21<sup>w</sup>

### SAMPLER RECOVERY

Gas 1000 ML  
 Oil 2000 ML  
 Mud - ML  
 Water - ML  
 Other - ML  
 Pressure 70 # ML  
 Total 3000 ML

### PIT MUD ANALYSIS

Chlorides 2400 ppm.  
 Resistivity .2 ohms @ 50 F  
 Viscosity 52  
 Mud Weight 9.2  
 Filtrate 7.2  
 Other 2# LCM

### SAMPLER ANALYSIS

Resistivity - ohms @ - F  
 Chlorides - ppm.  
 Gravity 41 corrected @60F

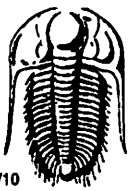
### PIPE RECOVERY

**TOP**  
 Resistivity \_\_\_\_\_ ohms @ \_\_\_\_\_ F  
 Chlorides \_\_\_\_\_ ppm.

**MIDDLE**  
 Resistivity \_\_\_\_\_ ohms @ \_\_\_\_\_ F  
 Chlorides \_\_\_\_\_ ppm.

**BOTTOM**  
 Resistivity \_\_\_\_\_ ohms @ \_\_\_\_\_ F  
 Chlorides \_\_\_\_\_ ppm.





# TRILOBITE TESTING INC.

1515 Commerce Parkway • Hays, Kansas 67601

## Test Ticket

NO. 64920

Well Name & No. NKD Farms - Felder Unit 1-6 Test No. 2 Date 2-28-16  
 Company STELBAR OIL CORPORATION, Inc Elevation 2405 KB 2400 GL  
 Address 1625 N. WATERFRONT PKWY, SUITE 200 WICHITA, KS 67206-6602  
 Co. Rep / Geo. DAVE GOLDAK Rig MURFIN RIG 16  
 Location: Sec. 6 Twp. 16<sup>r</sup> Rge. 21<sup>w</sup> Co. Ness State Ks

Interval Tested 4322-4327 Zone Tested Cher 'C' SAND  
 Anchor Length 5 Drill Pipe Run 4275 Mud Wt. 9.4  
 Top Packer Depth 4317 Drill Collars Run 30 Vis 60  
 Bottom Packer Depth 4322 Wt. Pipe Run - WL 7.2  
 Total Depth 4327 Chlorides 2400 ppm System LCM 2 #  
 Blow Description IFP - WEAK SURFACE BLOW  
TSTP - NO BLOW

Rec	Feet of	%gas	%oil	%water	%mud
<u>1</u>	<u>50CM</u>	<u>1</u>		<u>99</u>	
Rec	Feet of	%gas	%oil	%water	%mud
Rec	Feet of	%gas	%oil	%water	%mud
Rec	Feet of	%gas	%oil	%water	%mud
Rec	Feet of	%gas	%oil	%water	%mud

Rec Total 1 BHT 106 Gravity - API RW - @ - ° F Chlorides - ppm

(A) Initial Hydrostatic <u>2134</u>	<input checked="" type="checkbox"/> Test <u>1150</u>	T-On Location <u>0700</u>
(B) First Initial Flow <u>19</u>	<input checked="" type="checkbox"/> Jars <u>250</u>	T-Started <u>0820</u>
(C) First Final Flow <u>20</u>	<input checked="" type="checkbox"/> Safety Joint <u>75</u>	T-Open <u>1030</u>
(D) Initial Shut-In <u>587</u>	<input type="checkbox"/> Circ Sub	T-Pulled <u>1130</u>
(E) Second Initial Flow <u>-</u>	<input type="checkbox"/> Hourly Standby	T-Out <u>1321</u>
(F) Second Final Flow <u>-</u>	<input checked="" type="checkbox"/> Mileage <u>N/C STAYED AT RIG</u>	Comments
(G) Final Shut-In <u>-</u>	<input checked="" type="checkbox"/> Sampler <u>250</u>	
(H) Final Hydrostatic <u>2114</u>	<input type="checkbox"/> Straddle	<input type="checkbox"/> Ruined Shale Packer
Initial Open <u>30</u>	<input checked="" type="checkbox"/> Shale Packer <u>250</u>	<input type="checkbox"/> Ruined Packer
Initial Shut-In <u>30</u>	<input type="checkbox"/> Extra Packer	<input type="checkbox"/> Extra Copies
Final Flow <u>-</u>	<input type="checkbox"/> Extra Recorder	Sub Total <u>0</u>
Final Shut-In <u>-</u>	<input type="checkbox"/> Day Standby	Total <u>1975</u>
	<input type="checkbox"/> Accessibility	MP/DST Disc't
	Sub Total <u>1975</u>	

Approved By [Signature] Our Representative RAY SCHWAGER Thank you

Triobite Testing Inc. shall not be liable for damaged of any kind of the property or personnel of the one for whom a test is made, or for any loss suffered or sustained directly or indirectly, through the use of its equipment, or its statements or opinion concerning the results of any test, tools lost or damaged in the hole shall be paid for at cost by the party for whom the test is made.



# TRILOBITE TESTING, INC.

1515 Commerce Parkway • Hays, Kansas 67601

## FLUID SAMPLER DATA

Ticket No. 64920 Date 2-28-16  
 Company Name STELBAR OIL CORP  
 Lease NKD FARMS-Field UNIT 1-6 Test No. 2  
 County Ness Sec. 6 Twp. 16<sup>s</sup> Rng. 21<sup>w</sup>

### SAMPLER RECOVERY

Gas — ML  
 Oil TRACE, show ML  
 Mud 3000 ML  
 Water — ML  
 Other — ML  
 Pressure 20 ML  
 Total 3000 ML

### PIT MUD ANALYSIS

Chlorides 2400 ppm.  
 Resistivity .2 ohms @ 50 F  
 Viscosity 60  
 Mud Weight 9.4  
 Filtrate 7.2  
 Other 2# LCM

### SAMPLER ANALYSIS

Resistivity — ohms @ — F  
 Chlorides — ppm.  
 Gravity — corrected @60F

### PIPE RECOVERY

**TOP**  
 Resistivity — ohms @ — F  
 Chlorides — ppm.

**MIDDLE**  
 Resistivity — ohms @ — F  
 Chlorides — ppm.

**BOTTOM**  
 Resistivity — ohms @ — F  
 Chlorides — ppm.